

CITY ENGINEERING DIVISION
Capital Improvements Section

Monthly Capital Projects Report
June 2022

Honorable Mayor, Vice Mayor and Council,

The May report was completed by our Project Managers on June 6th and includes project updates for the month of May.

The attached map is a comprehensive view of all active capital improvements projects in our community that are assigned to the Capital Improvements Section of the City Engineering Division, inclusive of projects that are in planning, design, and construction phases.

We have tried to reduce the extent of information provided and focused on only those projects that had substantive progress from previous months or have key milestones to share.

If you would like to receive more information on a specific project, please reach out and we'd be glad to share more detailed information.

Boulder Point - University Ave Traffic Calming (DESIGN PHASE)

The Traffic Commission approved the traffic circle design at the intersections of University Ave/Majestic Rd and University Ave/Tombaugh Way on June 1st, 2022. This design in temporary form lowered the 85th percentile speed on University Ave to 27 mph, down from 31 mph. This brings the speeds down to a level that are below the threshold for traffic calming based on the worksheets in the Guidebook for Residential Traffic Management. The next steps is to hire a designer to complete the final design. The final design must address concerns from citizens in the neighborhood regarding the traffic circle design, including vehicles traveling in the bicycle lane and sight distance issues for Northbound vehicles on Majestic Rd. The design and construction of this project will be incorporated into the Woody Way improvements.



W University Ave Traffic Circles

Beaver Street/Butler Avenue Pilot Separated Bicycle Lanes (STUDY PHASE)

Traffic data has been collected for the sections of Beaver St and Butler Ave that have pilot separated bicycle lanes, and this data includes before and after speeds, bicycle volumes, and vehicle volumes. The Transportation section has reached out and interviewed stakeholders affected by the separated bicycle lanes. Stakeholders include COF Streets, COF Parks, COF Solid Waste, FPD, FUSD, and Mountain Line. The section has also drafted a survey for roadway users to comment on their experience with the pilot separated bicycle lanes. The traffic data and impact reviews from stakeholders has been compiled into a report and has been presented to Transportation Commission **June 1st**, Bicycle Advisory Committee **June 2nd**, and will be presented to the Pedestrian Advisory Committee **June 9th**. Once the commission/committees have reviewed the report, this item will be presented to City Council on **June 14th** to inform on how the pilot separated bike lanes are performing.



Pilot Bicycle Lanes on E Butler Ave

Spruce Wash – Cedar to Dortha and Dortha Inlet (CONSTRUCTION PHASE)

FUND: STORMWATER

Description - Consists of improvements to the Spruce Wash Channel from Cedar Avenue to south of Dortha Avenue. This work is in response to the damage that occurred during the 2021 monsoon flooding from the Museum Fire burn scar.

- Final grading continued this month on the open channel between Dortha and Cedar in preparation for shotcrete application the week of June 13.
- The floor of the inlet and concrete box structure was installed on May 31. The walls and top of the structure are being formed in anticipation for installation the week of June 13.
- **Due to concrete supply restrictions in our community, the deliveries and installation may be scheduled outside of our normal operating hours during our large concrete pours. We will be issuing a notice to the neighborhood prior to the dates, and we will make every effort to limit off-hours work.**
- Staff provided a monthly update to Council on May 31, which included sandbag delivery, project updates, the siren system, and communications.
- Museum Flood Engineering and Feasibility team meetings continue every Monday and City staff continues to meet monthly with County Supervisor Jeronimo Vasquez.
- While there are utility and property related challenges to this project, construction of these improvements will occur prior to the 2022 monsoon season.



Shoring installation - looking north



Walls and top of structure being formed. Floor is installed. Looking south.

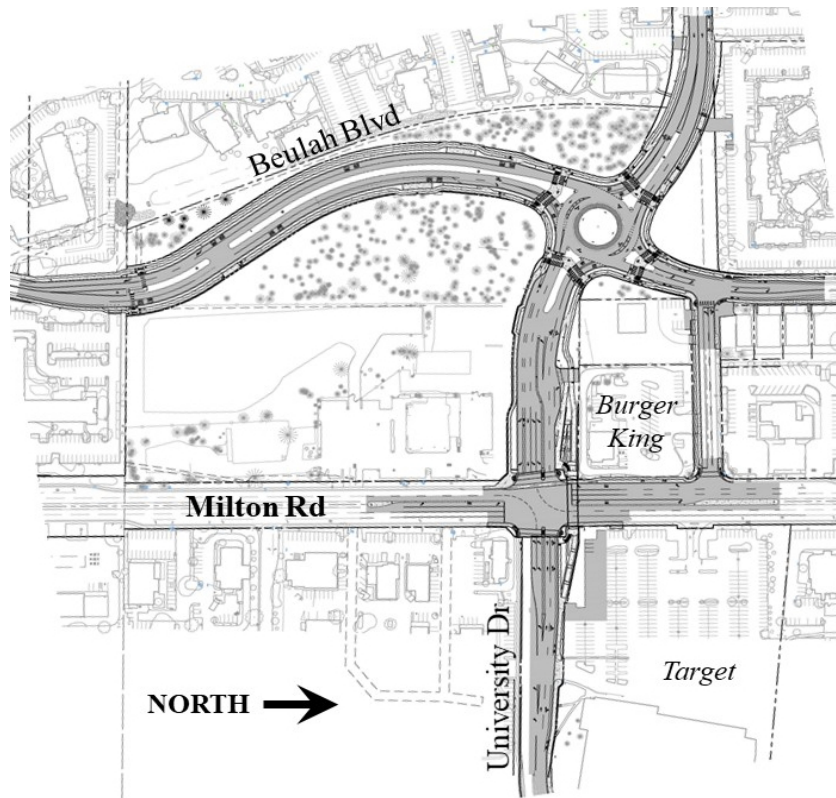
Beulah Boulevard Extension/University Drive Realignment (DESIGN PHASE)

FUND: TRANSPORTATION TAX (STREETS)

Description – This roadway improvement project extends the northern terminus of Beulah Boulevard to connect with University Avenue. Furthermore, University Avenue (west of Milton) will be realigned to match up with University Drive (east of Milton). A new roundabout will be constructed where Beulah Boulevard and University Avenue will intersect. Additionally, this project will also be constructing a new pedestrian underpass beneath Milton Road, just south of Burger King across to Target. Construction is expected to begin in spring 2023 and conclude in late 2024.

Project Update :

- Shephard-Wesnitzer, Inc. (SWI) is the design engineer.
- Eagle Mountain Construction (EMC) is the CMAR (Construction Manager at Risk) contractor.
- SWI will continue design work to complete Final 2s (100%) plans, which are construction-ready plans, by early July.
- Due to property acquisition timelines, volatility of costs, and construction season constraints the team will be delaying award of GMP (guaranteed maximum price) 1 until the end of the 2022 calendar year. This will allow time to value engineer the project to see where cost savings can be achieved.
- Construction is anticipated to begin spring 2023.
- A City Council Report will be sent to City Council in mid-June to provide budget and project background and update.



Extent map of new Beulah and University Roadway Project – taken from 90% plans.

Coconino Estates Improvements Phase II (CONSTRUCTION PHASE)

FUND: ROAD REPAIR & STREET SAFETY & AGING WATER AND SEWER INFRASTRUCTURE REPLACEMENT PROGRAMS

Description - This is a utility and roadway improvements project located on several streets in the Coconino Estates neighborhood as seen in the map below. Improvements on the streets generally consist of replacing all existing utility and roadway infrastructure. The utility improvements include replacing the existing water and sewer mains, water and sewer services, fire hydrants, and manholes. The roadway improvements include replacing the existing asphalt roadway, replacing rolled curb with vertical curb, constructing driveway ramps at driveway entrances, and replacing select sidewalk only where it currently exists on Crescent Drive. Sidewalk will **NOT** be installed where it does not currently exist. For additional information visit the Project website at www.coconinoestates.com

Contractor - Standard Construction Company

Project Update:

Crescent Drive and Meade Lane

- Sewer installations and temporary roadway trench patches are complete except for the ongoing testing.
- Water main installations and temporarily patching roadway water trenches are complete except for the ongoing testing and public and private connections remaining.
- Water main and service installations and temporary roadway trench patches are complete on Meade except for the ongoing testing and public and private connections remaining.
- Concrete curb removals and replacements began in early May working north from Meade and are currently ongoing.
- Crescent is closed to non-residential traffic from Meade to Talkington.

Navajo Drive and Elizabeth Road

- Sewer installations and temporary roadway trench patches are complete except for testing.
- Water main and service installations are complete except for the ongoing testing and public and private connections remaining.
- Navajo is closed to non-residential traffic.

Talkington Drive and Side Streets

- Sewer main and service installations are complete on Talkington, Hazel, Thelma, and Davis, with testing remaining.
- Water main installations on Talkington, Hazel, Thelma, and Davis are complete, with testing and connections remaining.
- Water service installations are ongoing on Talkington, Hazel, Thelma, and Davis.
- Talkington Drive is closed to non-residential traffic from Meade to Crescent.

For questions and project information, call the
Project Hotline at (928) 255-5153
or email news@coconinoestates.com

Access for residents, mail,
deliveries, trash, recyc-
ling and emergency
services will be
maintained.



Coconino Estates Improvements Phase II Project Map



Crescent/Meteor north intersection, looking north at concrete curb installations and temporary driveway ramp installations.



Crescent south of Venus intersection, looking north at concrete curb installations.

West Flag Improvements - David & Hutcheson (CONSTRUCTION PHASE)

FUND: ROAD REPAIR & STREET SAFETY

Description - This is a utility and roadway improvements project located on David Drive and Hutcheson Drive as seen in the map below. The Project originally included Canyon Terrace and was bid as one project in the spring of 2020 but was pulled at the end of the bidding process given the economic and funding source uncertainties due to the COVID 19 Pandemic. It was decided to split the Project into two separate projects consisting of 1. David/Hutcheson and 2. Canyon Terrace. Improvements on the streets generally consist of replacing all existing utility and roadway infrastructure. The utility improvements include replacing the existing water and sewer mains (except for on David Drive), water and sewer services, fire hydrants, and manholes. The roadway improvements include replacing the existing asphalt roadway, replacing rolled curb with vertical curb on David Drive, and replacing select edge improvements (sidewalk, curb, and gutter). For additional information visit the Project website at www.Flagstaff.az.gov/westflagimprovements.

Contractor - Mountain High Excavating

Project Update:

- David and Hutcheson utility and roadway improvements are complete.
- A final walk-through occurred on 6/2/2022 identifying remaining items of work including a few mailboxes, paver, walkway, and landscape restorations.
- David and Hutcheson are now open and will remain open during completion of the final items of work.



Fine, looking north at final striping on Hutcheson.



Coconino Estates Improvements Phase I (CONSTRUCTION PHASE)

FUND: ROAD REPAIR & STREET SAFETY

Description- This is a utility and roadway improvements project located in the Coconino Estates neighborhood on Beal Road from Rockridge to Fort Valley, Navajo Drive from Navajo Road to Murray, Whipple Road from Navajo Drive to McMillan, and Navajo Road from Navajo Drive to Fort Valley. Improvements on the streets generally consist of replacing existing infrastructure with new, including water and sewer mains, water and sewer services, fire hydrants, storm drains, streetlights, the entire asphalt roadway, and defective select edge improvements (curb & gutter, sidewalk, etc.), except for Whipple Road which will only receive a new water main. There will also be new infrastructure added consisting of underground electric lines for streetlighting and sidewalk on both sides of the street where it does not currently exist on Beal Road, Navajo Drive south of Beal, and on Navajo Road. For additional information visit the Project website at www.coconinoestates.com.

Contractor - Eagle Mountain Construction

Project Update:

A new way of communicating project information has been started with the installation of a new project sign and banner prototype that include a QR code for the public to scan and view more information on the Project website.

Navajo Road (Construction Zone #1)

- Utility, roadway, and landscape restorations are complete.
- Navajo Road is open to all traffic.

Navajo Drive south of Beal (Construction Zone #2)

- Utility, roadway, and landscape restorations are complete.
- Navajo Drive south of Beal is open to all traffic.

Beal Road (Construction Zone #3)

- Utility and roadway improvements are complete as well as landscape restorations.
- Minor striping improvements will be corrected at a later date.
- Construction activities on Beal, west of the Rio de Flag, paused for the winter and resume this June.
- Beal is currently open to all traffic.

Navajo Drive north of Beal (Construction Zone #3)

- Water main and service installations, testing, and connections are complete on Navajo from Beal to Murray and on Whipple from Navajo to McMillian.
- Sewer main and service installations are complete up to Anderson and are ongoing north to Murray.
- Concrete curb and gutter installations continue between Beal and Anderson.
- Navajo from Beal to Anderson is closed to thru traffic, with detours posted around the closure.
- Whiting from Navajo to Kutch is closed to thru traffic, with detours posted around the closure.
- Whipple from Navajo to 180 is closed to thru traffic, with detours posted around the closure.
- McMillian from Beal to Whipple is closed to thru traffic, with detours posted around the closure.

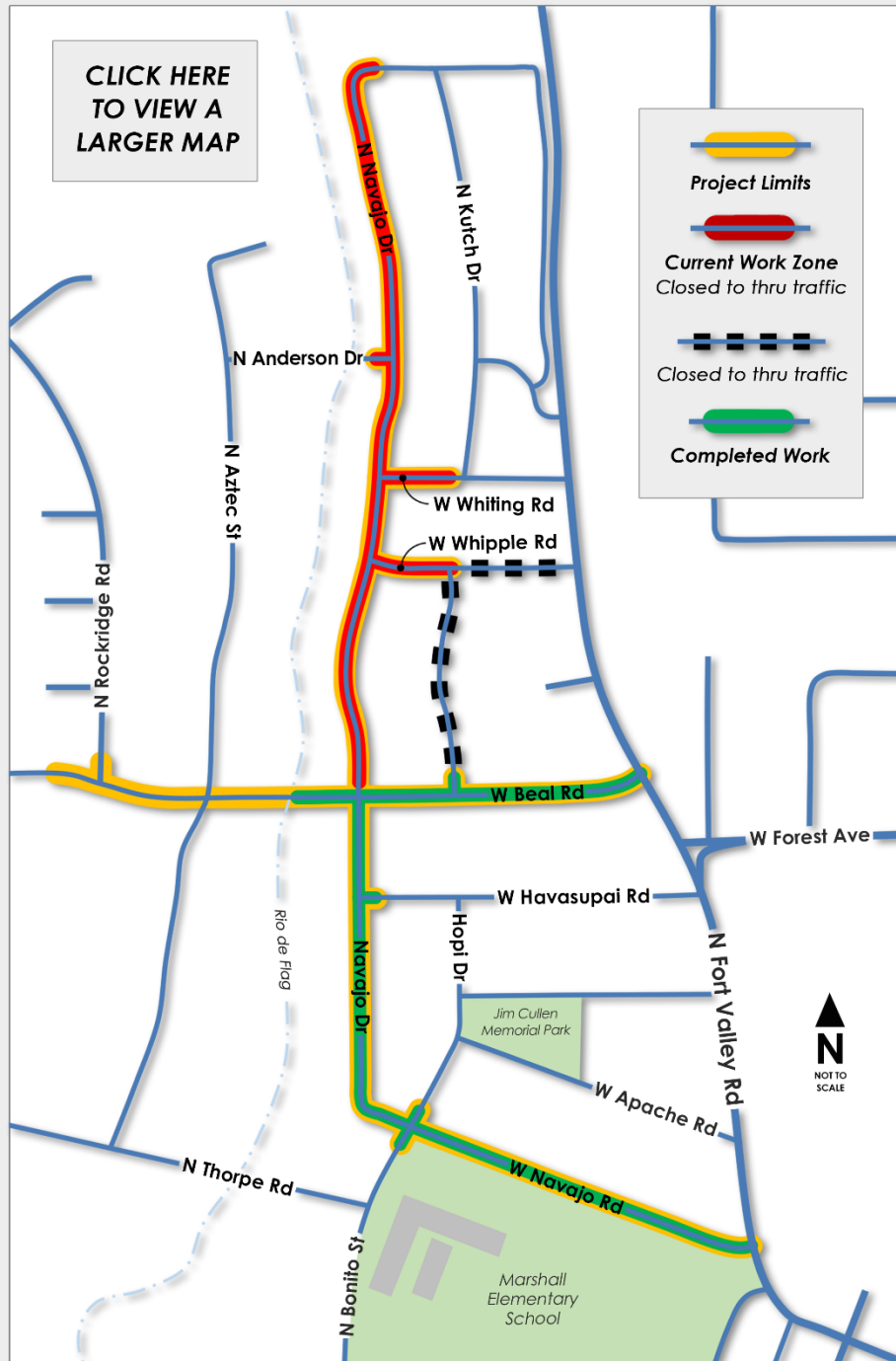


Navajo Dr. at Whiting Rd., looking north at the concrete curb and gutter installations.



Navajo Dr. at Murray Rd., looking at water and sewer installations.

CLICK HERE
TO VIEW A
LARGER MAP



For general questions
and project
information, call the
Project Hotline at
(928) 255-5153
or email

news@coconinoestates.com



Residential access for mail, deliveries, trash,
recycling, and emergency services will be
maintained. No Mountain Line bus routes
are affected during this time.

Project Map with current road closures and detours.

Flagstaff Downtown Mile Project (PLANNING AND DESIGN PHASE)

FUND: TRANSPORTATION, STORMWATER, AGING INFRASTRUCTURE, BNSF RAILWAY, METROPLAN, GRANTS

Description - The Downtown Mile Project consists of a group of City and local agency projects located in Downtown Flagstaff and surrounding the BNSF Railway corridor. They include:

- The Rio de Flag Flood Control Project
- The Rio de Flag Pedestrian Tunnel
- The Lone Tree Overpass
- The Florence to Walnut Pedestrian Underpass
- The Milton Bridge Reconstruction
- The Mountain Line Downtown Connection Center (DCC)



The city has partnered with ADOT, BNSF Railway, Mountain Line, Amtrak, and the Army Corps of Engineers for the overall Downtown Mile Project to coordinate existing funding, plan construction efficiencies surrounding the BNSF corridor, investigate multimodal connectivity, and to seek grant funding for unfunded BNSF mitigation measures to deliver these projects for the Flagstaff community.

The City applied for a USDOT RAISE Planning Grant in July 2021 to fund these planning activities and we received notice in early November that we were not successful. In lieu of the grant, supplemental funding from the City of Flagstaff, MetroPlan, and BNSF has been dedicated to continuing the planning and design effort.

Project Update:

- The Request for Statements of Qualification for design of the Downtown Mile project and BNSF mitigation was advertised on April 24. The solicitation closed on May 23. One submittal was received, and the Statement of Qualifications is currently being reviewed by the evaluation committee.
- On May 16, Staff met with BNSF and Amtrak to discuss platform improvements related to the adjacent rail reconstruction.
- Staff coordinated development of the IGA with MetroPlan to execute receipt of a \$490,000 funding contribution that was approved for the project planning and design effort.
- The city, MetroPlan, BNSF, and HDR (BNSF consultants) met in Flagstaff on May 9 for the final workshop to develop an Infrastructure Investment and Jobs Act (IIJA) INFRA/Rural grant application for funding construction of the Downtown Mile projects and rail mitigation. The application was completed and submitted by the City on May 20.
- The total project cost for the grant scope is estimated at \$65M and the amount of federal funding requested is \$39M (60%). The non-federal match (40%) is being provided from the City of Flagstaff in the amount of \$15M, which is funded through Proposition 419 partnership funding and allocated Transportation and Stormwater funding, and BNSF Railway is contributing \$11M in private funds (\$8.8M) and property rights (\$2.2M). BNSF also provided expert consultant services to make this grant application possible. This contribution from BNSF demonstrates unprecedented support and partnership for our community.

The current updates for the projects included in the Downtown Mile are as follows:

Rio de Flag Flood Control Project (Design Phase)

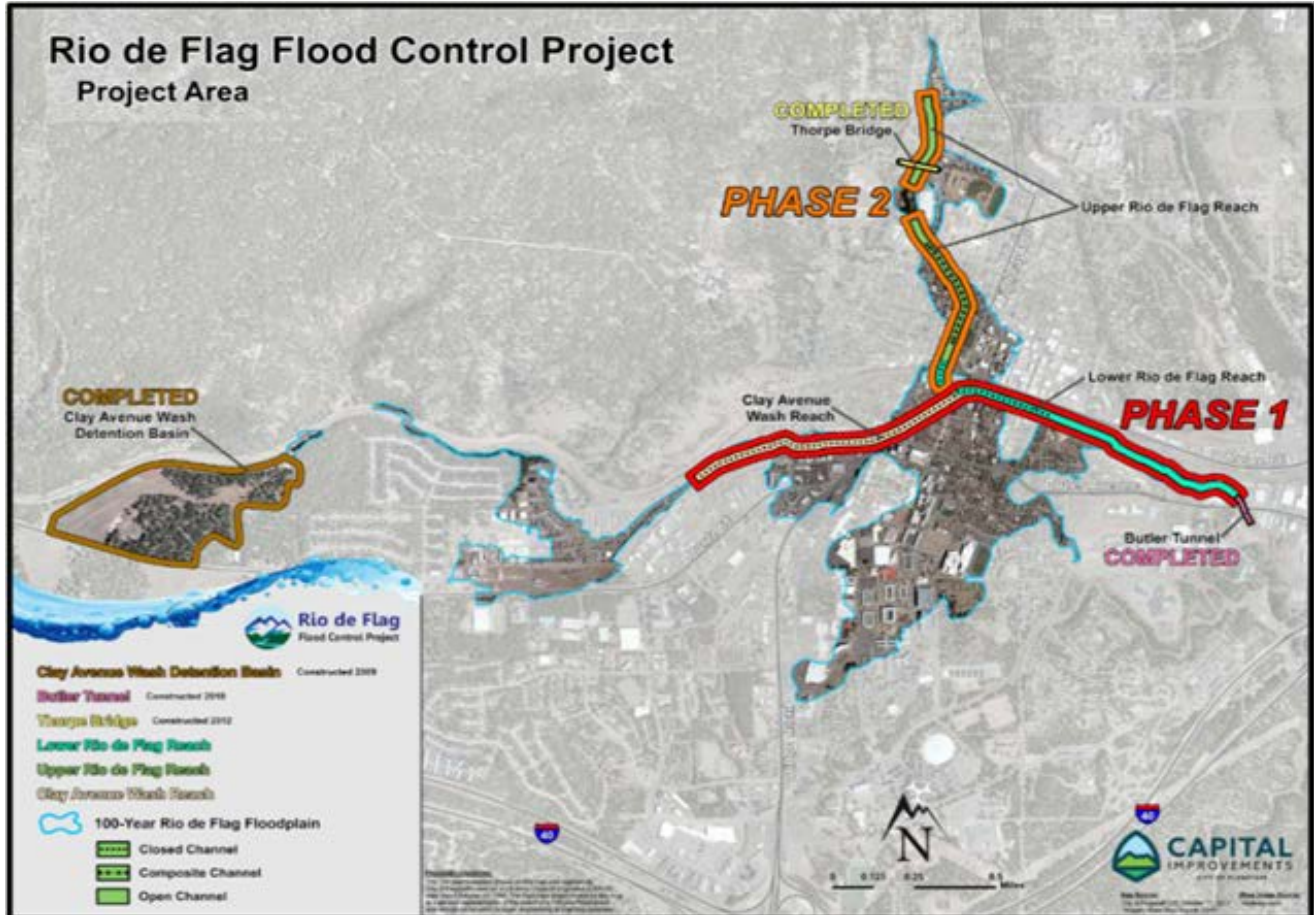
FUND: STORMWATER & AGING INFRASTRUCTURE

Description - Design consists of channel improvements along both the Rio de Flag and Clay Avenue Wash channels through central Flagstaff and includes a combination of underground concrete box culverts, open channel, and composite channel. The composite channel section has both an underground culvert to carry large volumes of water and a smaller open channel on top, which will provide an aesthetic element of flowing surface water during rainfall events. Total project length is approximately 15,000 feet.

The purpose of the Rio de Flag Flood Control Project is to remove the hazards associated with the hundred-year storm event, which include property damage, life safety concerns, and community economic impacts. From research conducted by the Army Corps, it was determined that a significant flood would damage approximately 1,500 structures valued at over \$916M and cause \$93M in economic damages, for a total impact of over \$1B.

Project Update:

- Work continued this month on refinement of the design plans and the real estate documents.
- The draft Construction and Maintenance Agreement was received from BNSF on May 5. This document is under review with City and Army Corps legal staff.



Rio de Flag Pedestrian Tunnel (Design Phase)

FUND: STORMWATER & AGING INFRASTRUCTURE

Description - The Rio de Flag Pedestrian Tunnel will be constructed along with the flood control channel improvements under the BNSF corridor. The undercrossing will also be constructed under the ADOT Route 66 corridor. This will be a FUTS facility which will link north downtown and City Hall with the Southside neighborhood and the future Mountain Line DCC. Project progress will be reported in the Rio de Flag Flood Control Project item above.

Lone Tree Overpass Project (DESIGN PHASE)

FUND: TRANSPORTATION

Description - The Lone Tree Overpass Project will provide a grade-separated crossing over the future Rio de Flag drainage and the BNSF Railway corridor from Butler Avenue to Route 66. Funding for this project is provided through voter approved bonds as designated in the 2018 Proposition 420. The project will also include improvements from Butler south to Sawmill Road, which will be funded by Proposition 419. The project will be delivered via the Design-Build process and the team includes Ames as the contractor and WSP as the prime design consultant.

Project Update:

- On May 3 and 4, staff attended the Transformative Transportation workshop hosted by MetroPlan and City Sustainability staff to discuss future direction on development of the City's transportation infrastructure.
- On May 11, the project team met with BNSF to review the 30% rail relocation design.
- On May 24, the team presented the project to the City's Commission on Inclusion and Adaptive Living.
- On May 24, the team presented the draft Economic Impact Study (EIS) and the Elden Loop Road concept to City Council. The draft EIS is placed on the Project website (lonetreeoverpass.org) for public viewing and the information will be presented to the community at a public meeting in July. Council directed staff to remove the Elden Road Connection from the project scope and investigate a future FUTS facility.



Florence to Walnut Pedestrian Tunnel (Design Phase)

FUND: TRANSPORTATION

Description - Design consists of a FUTS undercrossing of the BNSF corridor that will link Walnut Street and Florence Street in the La Plaza Vieja neighborhood. This project is in the approved La Plaza Vieja Neighborhood Specific Plan and is designed and funded. Upon investigation of the final rail relocation, the design will most likely need to be modified.

Milton Bridge Reconstruction (Planning Phase)

FUND: STORMWATER, AGING INFRASTRUCTURE, AND TRANSPORTATION

Description - The City is currently investigating reconstruction of the existing Milton Bridge structure to accommodate a third mainline track for BNSF and to provide a standard bridge clearance. The current clearance is 13'9" and the standard height is 16'6". The realignment and reconstruction will allow the city to construct the structures for both the Florence to Walnut pedestrian undercrossing and the Rio de Flag flood way and pedestrian tunnel while minimizing operational impacts and construction risk to the BNSF mainline. A minimum of two active tracks are required to be maintained for BNSF operations.

Mountain Line Downtown Connection Center (Design Phase)

FUND: GRANT

Description - The Downtown Connection Center is included in the Downtown Mile project report due to the City's partnership with Mountain Line for developing the site and the opportunity to plan the facility with multimodal connections with the rest of the Downtown Mile projects. There are also current discussions for future co-location of the Amtrak Station.

Project Update:

- The city is facilitating coordination of the DCC site improvements with the future Rio de Flag construction.
- Mountain Line continues its effort to the NEPA work as required by the Federal Transit Authority.
- Staff has begun to prepare an IGA that will be negotiated with Mountain Line following the completion of the NEPA. Mountain Line hopes to have the IGA before the City Council in May 2022 for approval.
- Mountain Line plans to begin construction of its building in Phase I this Summer (2022).

East Route 66 and El Paso Flagstaff Waterline Extension (CONSTRUCTION PHASE)

FUND: AGING INFRASTRUCTURE

Description – A utility improvements project that extends the 12” ductile iron waterline approximately 2,500 linear feet from approximately the intersection of Test Dr. and Rt. 66 to the intersection of El Paso Flagstaff Rd. The waterline extension continues north, up El Paso Flagstaff Road towards the Wildcat Hill Wastewater Treatment plant, with approximately 1,600 linear feet of new 8” ductile iron waterline. The project also calls for a repaving of El Paso Flagstaff Road for the extents of the waterline extension.

Contractor – Scholz Contracting, LLC

Project Update:

- In the month of May crews constructed approximately 2,500 linear feet of 12-inch ductile iron waterline extension that runs along E Rt 66.
- Roadway work has begun on El Paso Flagstaff Rd with completion scheduled by end of June.



El Paso Flagstaff Rd, crews connecting the new 8” waterline to existing

Library Entrance (CONSTRUCTION PHASE)

FUND: BBB - BEAUTIFICATION

Description – Project to bring Library Entrance into ADA compliance with new handicap ramp and new overall vision for the entrance. Public art will be incorporated into project and an artist is being brought onto the design team. Project includes upgrades to landscaping, handicap-accessible parking, parking lot, and hardscape.

Project Update:

- The first project advertisement to the City Job Order Contracting (JOC) contractors was unsuccessful due to heavy contractor workloads. Additional flexibility was included, and the project was readvertised to the JOC contractors.
- A bid was received, significantly higher than estimated, and the project team was unable to reach an agreement in negotiations and value engineering discussions with the contractor.
- The project will be advertised for hard/low bid during the first week of June with plans to award a construction contract at the July 5th City Council meeting.



Library Entrance Project-Rendering of selected concept plan

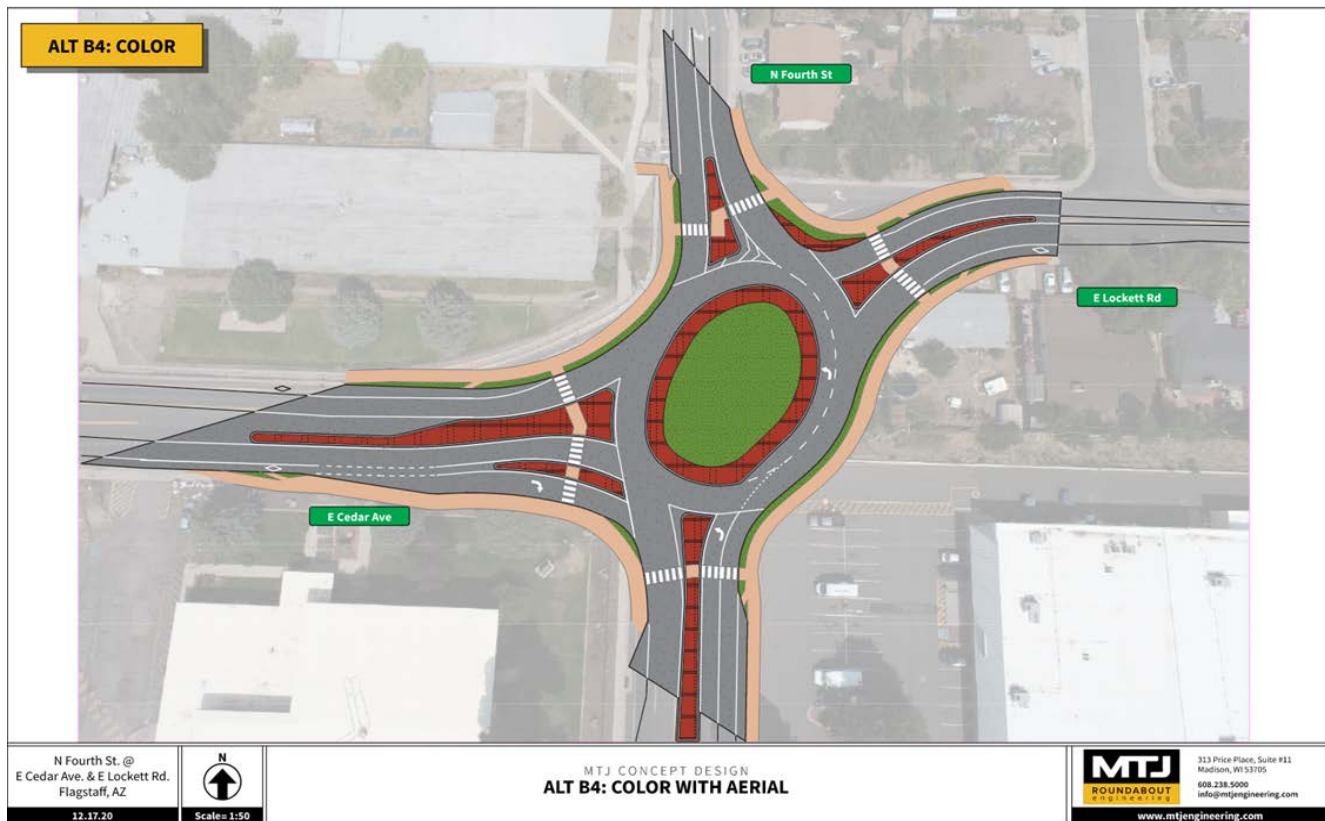
Lockett/Fourth Roundabout (DESIGN PHASE)

FUND: HSIP GRANT, TRANSPORTATION TAX

Description – Project consists of the design and construction of a new roundabout at the Lockett-Cedar-Fourth Street intersection. Project is funded by an HSIP Grant, with supplementary funding from City of Flagstaff. Project design and construction to be administered by ADOT. The new roundabout will improve safety and operations for vehicles, pedestrians and bicyclists in this busy intersection. Project design and construction to be administered by ADOT.

Project Update:

- Project team is in discussions regarding allowable closures and maintenance of traffic options.
- An IGA amendment was approved by City Council on April 5th. The amendment incorporated additional design scope and project funding, and added City involvement in project inspections during the construction phase.
- An ordinance authorizing property acquisitions was brought to City Council on May 17th. A first read was approved.
- On May 31st the project was discussed at a City Council Work Session, and Council directed that several design modifications be considered. An update on these items is expected at the June 7th City Council meeting when the second read of the property acquisition ordinance is scheduled.
- A date for a public information meeting, to be held at the East Flagstaff Library, will be established soon (mid/late August).



Selected Design Alternative- Lockett-Cedar-Fourth Intersection

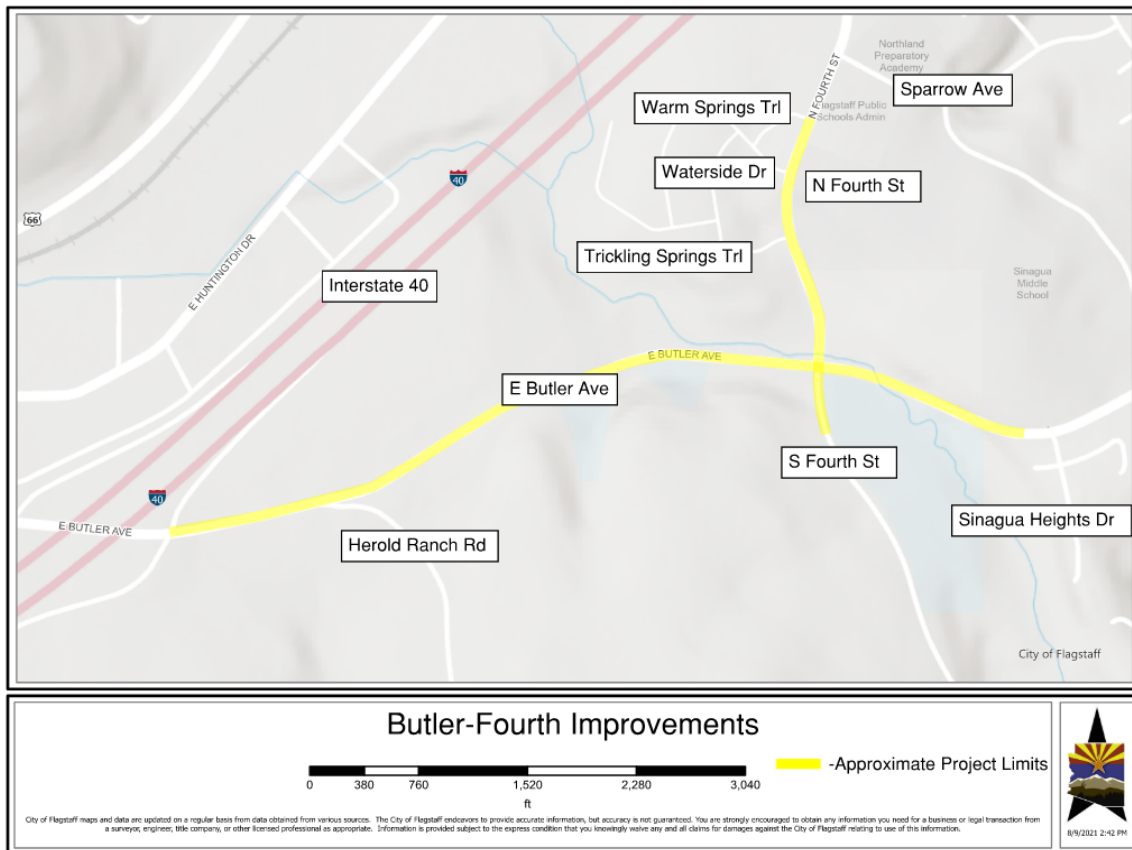
Butler-Fourth Improvements (DESIGN PHASE)

FUND: TRANSPORTATION TAX

Description –In general, the project consists of widening present-day Butler Avenue from Little America to Sinagua Heights and widening present-day Fourth Street from Warm Springs Trail/Sparrow Avenue to the upcoming Canyon Del Rio development south of Butler Avenue. Extensive public outreach and stakeholder engagement is expected during project development, including the preparation of conceptual alternative designs and preliminary feasibility analyses. Several intersections, new and existing, will be impacted along Butler Avenue. The Herold Ranch Road intersection will be re-aligned and converted to a roundabout. The Butler Avenue and Fourth Street intersection will consider a roundabout vs signalized intersection and will be raised to reduce flooding impacts from Spruce Avenue Wash. The project will include ITS (Fiber Optic Conduit) facilities and enhanced bicycle and pedestrian treatments, including a possible separated pedestrian crossing at the Butler Avenue/Fourth Street intersection. Acquisition of new Right-of-Way is expected.

Project Update :

- The Engineering Design Services RSOQ was advertised on May 20th and closes on June 20th.



Approximate Project Limits- Butler-Fourth Improvements

LMWTP Flocculation and Sediment Basin Rehabilitation (DESIGN PHASE)

FUND: DRINKING WATER

Description – The flocculation and sedimentation basin structures and equipment that have been in operation for approximately 60 years are in deteriorated condition and require replacement and rehabilitation. The project consists of constructing a new static mixer installation, rehabilitation of the flocculation/sedimentation basin structures, replacement of electrical systems, and replacement of miscellaneous valves and piping.

Project Update:

- Brown and Caldwell has been hired as the Engineering Design Consultant.
- The project will be advertised in Fall of 2022 with construction starting in the Spring of 2023.



Staff and Brown and Caldwell taking a tour of the LMWTP basins

Rt. 66 at Fanning Landscaping (DESIGN PHASE)

FUND: BBB - BEAUTIFICATION

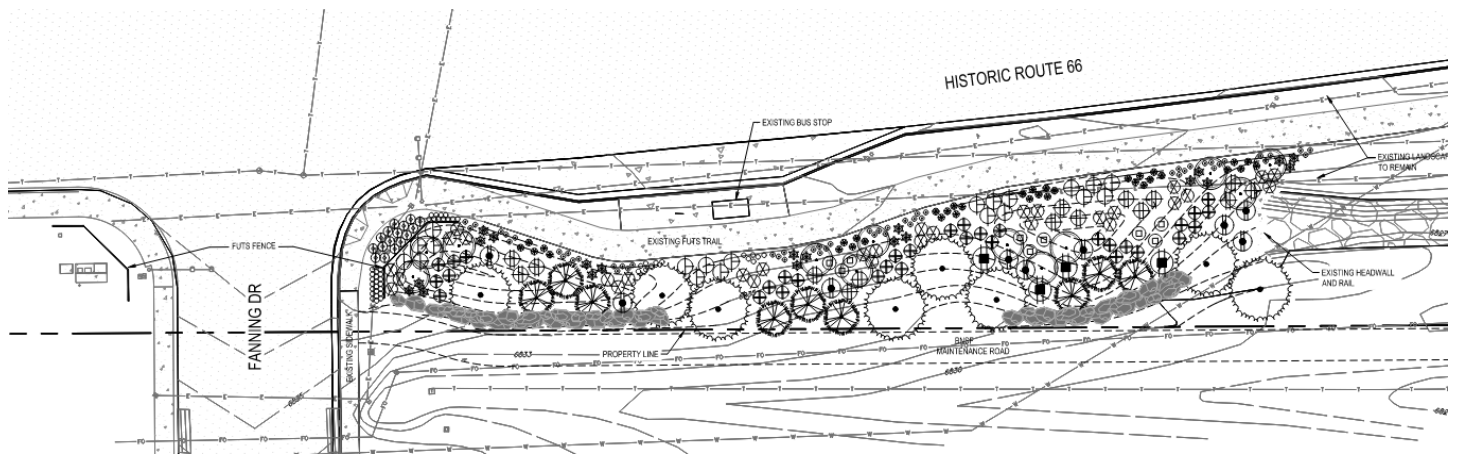
Description – This project will beautify the southeast corner of the Rte. 66 and Fanning Drive intersection with the addition of new landscaping, boulder walls, and FUTS fencing.

Project Update:

- The project team continues to work with Parks to select a final plant list.
- Civil construction plans have been reviewed and comments returned to project designer.



Rte. 66 At Fanning Landscaping-Existing Conditions



Rte. 66 At Fanning Landscaping-Preliminary Landscape Plan

Route 66 ADOT Bridge Replacement Project (CONSTRUCTION PHASE)

FUND: ARIZONA DEPARTMENT OF TRANSPORTATION

Description – Project consists of removing the existing concrete bridge that crosses the Rio de Flag channel and replacing with a precast box girder bridge with precast abutments. Included with the project are roadway approach slabs on either side of the new bridge, channel improvements with bank protection and revegetation mitigation measures. The purpose is to provide a new Route 66 bridge crossing at the Rio de Flag to serve Route 66/Milton.

Project Update:

- The over excavation beneath the new bridge began mid-March 2022 and been completed.
- The soil nail stabilization process has been completed as of mid-April. The soil nails will secure the existing channel and will ensure the channel is stable when the future Rio de Flag Flood Control project begins in this area.
- The restoration of the City Hall lawn, including turf placement and irrigation repairs began May 16th.
- The project work for cleanup and removal of obstructions continues.
- Completion of the downstream channel bank protection is expected in June.
- Final completion of the project is expected for the end of June.
- The contractor has cleared all lane closures, no restrictions are in place. When work continues, implementation of lane closures for EB or WB Route 66 will continue until work on the bridge is completed. ADOT will be monitoring the traffic and will make alterations as needed.



Upstream channel protection and turf replacement