



THORPE PARK ANNEX

CITY COUNCIL WORK
SESSION

OCTOBER 25TH



Community
Engagement and
Design Concept
Development

THORPE PARK ANNEX COMMUNITY ENGAGEMENT

-  Introduction to the project & the team
-  Goals and Approach
-  Community Engagement Process
-  Refinement and Approval



Meet the Team for Collaboration and Design

Who we are:

- A team of facilitators and landscape architects contracted by the City of Flagstaff's Parks, Recreation, Open Space, & Events Division.
- And City Staff

Where we work:

- Flagstaff, Tucson, the southwest, and beyond

Our role for this project:

- Facilitate broad community engagement and help design a robust concept plan for the Annex parcel

Jenny Moscato



Andre Rioux



Laura Mielcarek



Jessica Archibald



Lisa Clark



Carrie Eberly



Andi Rogers



Amy Hagin



Rebecca Sayers



Rose Toehe



Mark Reavis





GOALS OF THE PROCESS

What: A community supported Design Concept Plan for approval by Flagstaff's City Council – Fall 2022

How: Through robust & transparent community dialogue across Flagstaff and beyond

COMMUNITY ENGAGEMENT APPROACH

- Fostered multiple methods
- Focused on inclusive, interactive, and iterative strategies
- Each method built on the feedback from the previous



LISTENING AND LEARNING

Vested partner discussions

Community Survey

Virtual information sessions

Values, Visions,
Potential
Programming

CONVERSATIONS & DESIGN

Design Session 1 Design Session 2

Get to know the
parcel

Design Concept A

Design Concept B

Design Concept C

Build a Park

REFINEMENT/APPROVAL

Data refinement/coding

City Council Review/approval

Public release

Concept A

Concept B

Selected
Final
Design

Fall 2021

Spring/Summer 2022

Fall 2022

LISTENING AND LEARNING (6 MONTHS)

ASSESSMENT

- Vested partner discussions (41 individuals)
 - Summary of what we learned
- Targeted presentations
 - Parks and Recreation Commission
 - Indigenous Peoples Advisory Council
 - Indigenous Commission
 - Indigenous Circle of Flagstaff
 - Organized athletic groups

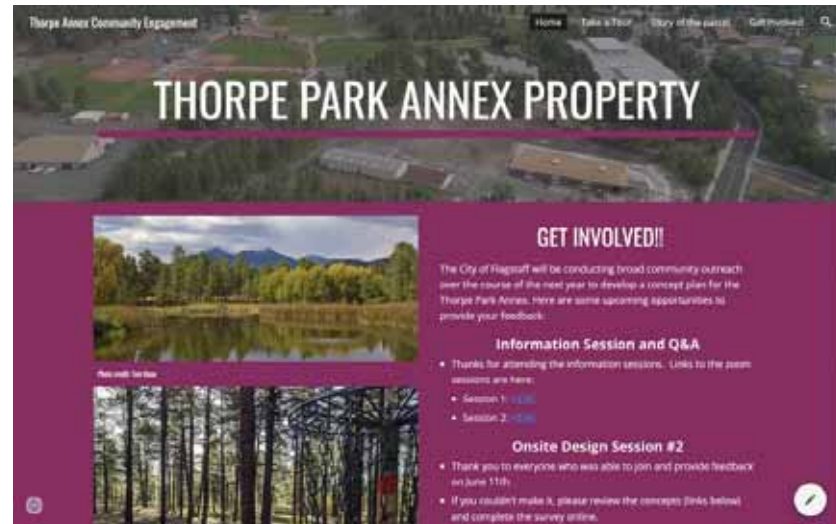
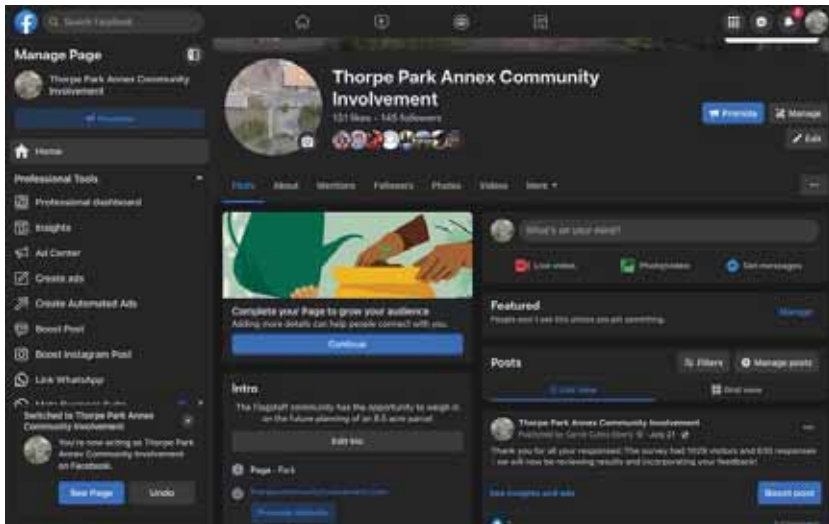


VISIONS/VALUES

- Nature and the natural area
- Current mixed use (passive and active recreations)
- Central location
- Family centered atmosphere

POTENTIAL PROGRAMMING

- Indigenous Community and Cultural Center (ICCC)
- Court sports such as pickleball
- Relocated dog park
- Community event space

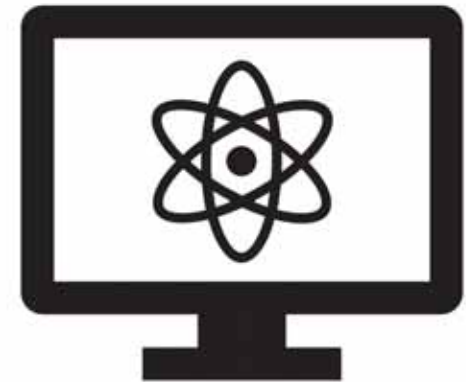


WEB-BASED OUTREACH AND ENGAGEMENT

Project Website
Facebook Page
Email outreach

LISTENING AND LEARNING
VIRTUAL INFORMATION SESSIONS

- ❖ Two virtual information sessions
 - ❖ Recorded
 - ❖ Posted to project website
- ❖ 200+ registered participants
 - ❖ History and background of the parcel
 - ❖ City guiding policy
 - ❖ Collaborative approach ahead



LISTENING AND LEARNING

COMMUNITY SURVEY #1

- Online survey using Google Forms
- Open to all community members
- Open for 6 weeks
- 1,084 Responses

Thorpe Park Community Survey

Southwest Decision Resources and Wheat Design Group (contracted with the City of Flagstaff's Parks, Recreation, Open Space and Events Division), are interested in your ideas, suggestions and feedback about the future of Thorpe Park.

The following 8-question survey will ask questions at two scales: First, at the Thorpe Regional Park level, and second, at the 8.5 acre Thorpe Park Annex Parcel level. Responses from this survey will help guide the community engagement process that aims to craft a concept plan for the property.

Survey findings will be synthesized by South Parks, Recreation, Open Space and Events D

ALSO, THIS SURVEY IS INTENDED TO GENERATE VOTING EXERCISE ON INDIVIDUAL IDEAS.

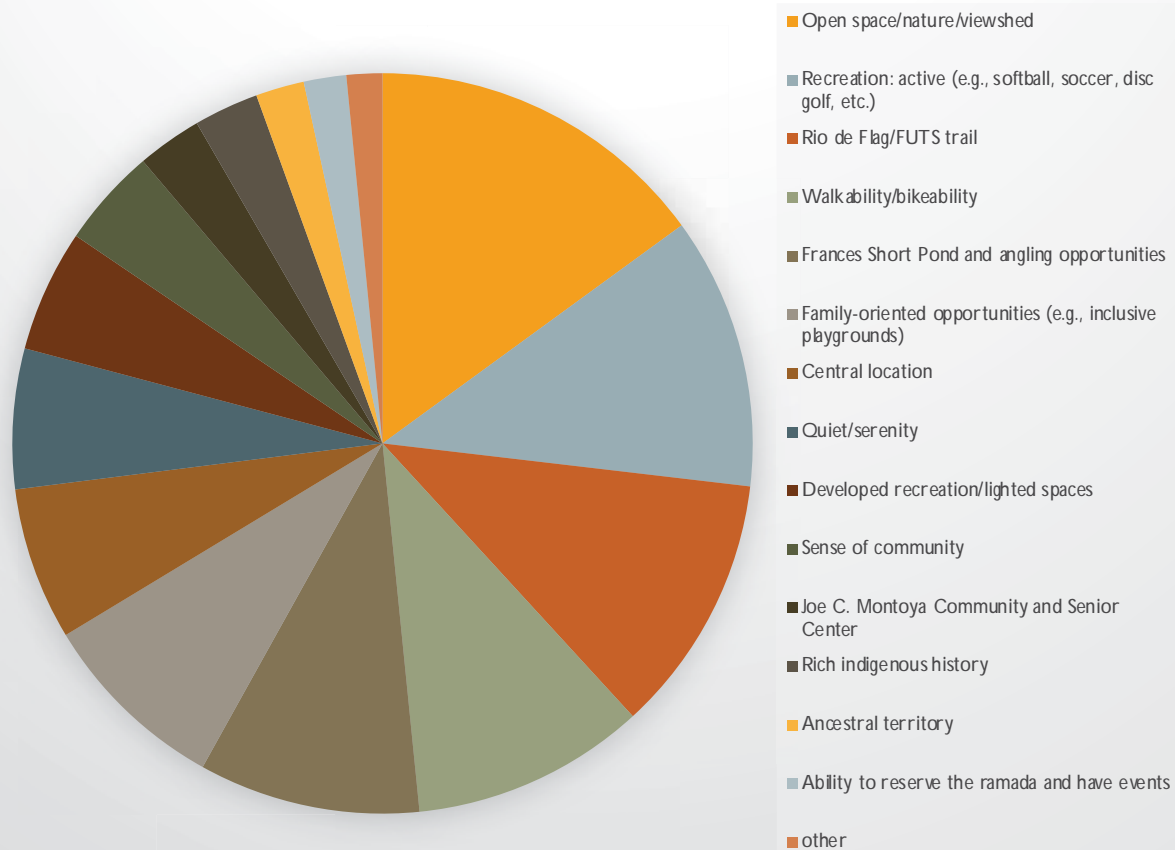
Thank you for your input into the future of T

5. What kind of PROGRAMMING AND/OR ACTIVITIES do you envision throughout the parcel? Please indicate which programming opportunity you feel belongs in each outlined area.



	Area 1 (pink)	Area 2 (blue)	Area 3 (green)	Area 4 (orange)	Not interested
Athletic courts ...	<input type="radio"/>	<input type="radio"/>	<input type="radio"/>	<input type="radio"/>	<input type="radio"/>
Athletic fields (...)	<input type="radio"/>	<input type="radio"/>	<input type="radio"/>	<input type="radio"/>	<input type="radio"/>
Bike park/pum...	<input type="radio"/>	<input type="radio"/>	<input type="radio"/>	<input type="radio"/>	<input type="radio"/>
Community bul...	<input type="radio"/>	<input type="radio"/>	<input type="radio"/>	<input type="radio"/>	<input type="radio"/>
Community ev...	<input type="radio"/>	<input type="radio"/>	<input type="radio"/>	<input type="radio"/>	<input type="radio"/>

Thorpe Park Values



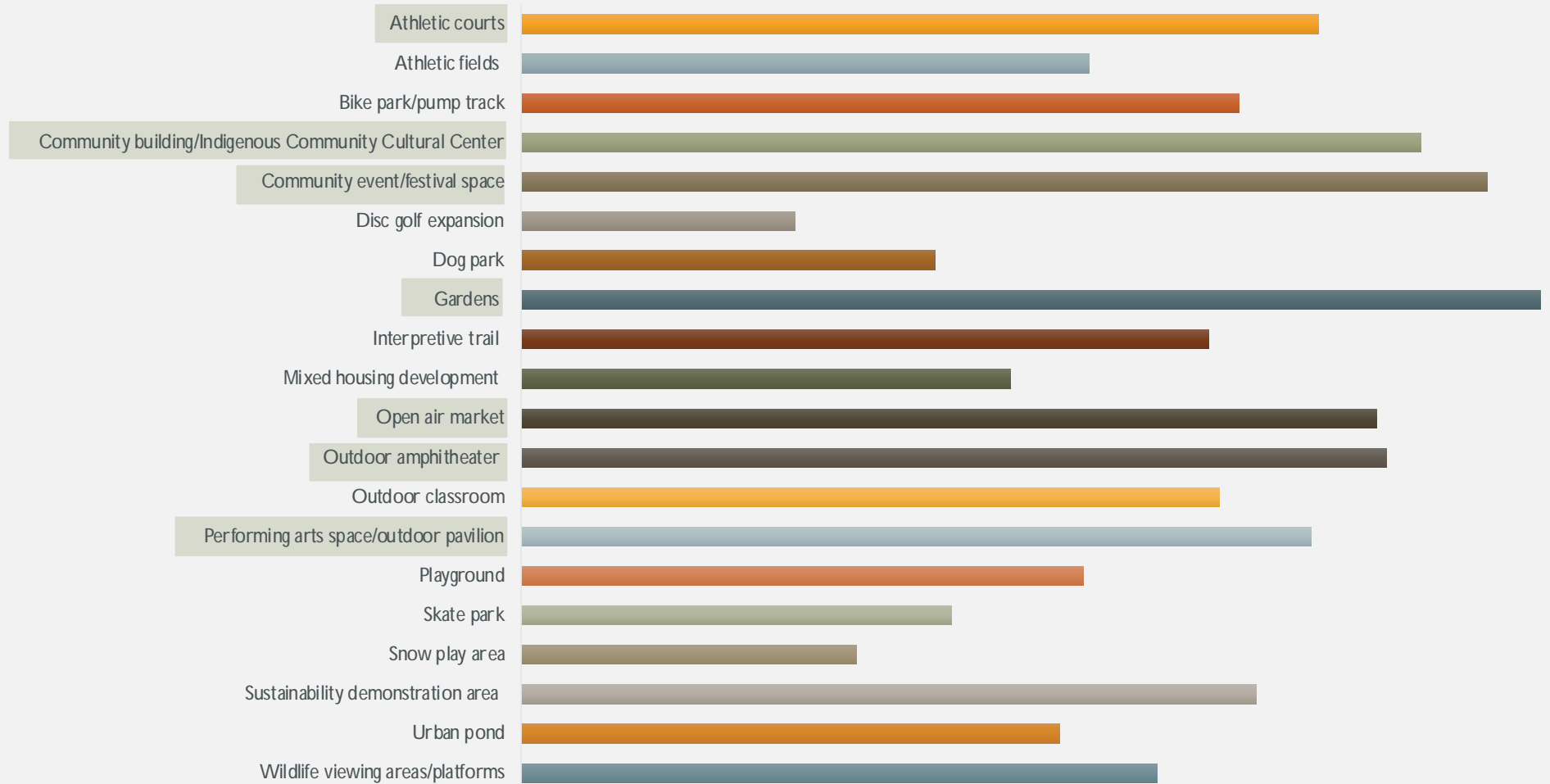
COMMUNITY SURVEY #1

COMMUNITY VALUES

- Consistent with early assessment (nature and indigenous values)
- Also included:
 - Walkability and bikeability
 - Central location
 - Frances Short Pond and angling opportunities

COMMUNITY SURVEY #1

GENERAL INTEREST IN PROGRAMMING ACTIVITIES



LISTENING AND LEARNING

Vested partner discussions

Community Survey

Virtual information sessions

Values, Visions,
Potential
Programming

CONVERSATIONS & DESIGN

Design Session 1 Design Session 2

Get to know the
parcel

Design Concept A

Design Concept B

Build a Park

Design Concept C

REFINEMENT/APPROVAL

Data refinement/coding

City Council Review/approval

Public release

Concept A

Concept B

Selected
Final
Design

Spring/Summer 2022

CONVERSATIONS AND DESIGN (3 MONTHS)

DESIGN SESSIONS

City of Flagstaff
Parks, Recreation,
Open Space and
Events

Thorpe Park Annex
Community Engagement:
Design Sessions

Connect. Discuss. Design.

- Join the Flagstaff Community to experience the Thorpe Annex Parcel
- Provide feedback on potential future uses
- Engage in a "Build a Park" activity



SATURDAY, APRIL 30th
12:00 - 2:00PM

FOOD TRUCKS AVAILABLE

Spend some time on-site and let us know:
Ideas for future concepts, what kinds of programming could go where, compatible uses, and more!





PLEASE JOIN US!

Design Session 1

Get to know the parcel

Build a Park



Design Session 2

Design Concept A

Design Concept B

Design Concept C

Thorpe Park Annex Parcel

DESIGN SESSION #2
JUNE 11, 2022 - 10:00AM-12:00PM
www.thorpecommunityinvolvement.com






??



- Review draft concept designs for the Thorpe Park Annex Parcel
- Provide feedback on draft concept designs that will inform the final design

10:00AM - Short presentation on how the Build-a-Park sessions, survey responses and other community feedback helped inform the 3 concept designs for community consideration.

10:30AM-12:00PM - Review the 3 concept designs, provide your feedback.

Meeting On-Site - please enter at the corner of Mogollon St. and Dale Ave., near downtown Flagstaff

CONVERSATIONS & DESIGN

DESIGN SESSION 1

- Outside stations and matrixes of experiences
- Review of survey results
- Build-a-park exercise (community members and parks staff participation)







COMMON ELEMENTS ACROSS ALL 3 CONCEPTS

- Indigenous Community Cultural Center (ICCC)
- Gardens and orchards
- Community event space
- Performing art space
- Open air markets

A. BACK TO NATURE

- ❖ Designed with an open-air emphasis, combining green space and market stalls (hard and softscape).
- ❖ Enhances the Indigenous Community Cultural Center as a centerpiece with traditional ceremonial space (east side), ethnobotanical area (south side), and performance space (north side).
- ❖ Ample hardscape event space with options for smaller and larger attendance (options to face north and east.)
- ❖ Promotes revegetation, vegetation buffers and multiple garden and orchard spaces.
- ❖ Integrates outdoor classroom space and opportunities for learning.
- ❖ Buffer: includes passive activities such as picnicking and walking.



B. FAMILY, FITNESS, FUN

- ❖ Designed with active recreation and intergenerational play in mind.
- ❖ Includes market entry points into the Indigenous Community Cultural Center (north side).
- ❖ Event space is intended to be flexible for both indoor and outdoor venues and variable capacities
- ❖ Includes active recreation types: Pickleball courts (6), 3-on-3 basketball courts (4 indoor), skate spot, a versatile play area.
- ❖ Fitness loop (1/2 mile) with multiple activity stations.
- ❖ Community garden adjacent to City-leased garden space.
- ❖ Buffer: Dog park with ramadas and benches.



C. SOMETHING FOR ALL

- ❖ Designed with multiple use focus: active and passive recreation, employee housing and green space
- ❖ Enhances circulation around the Indigenous Community Cultural Center while maintaining market and traditional ceremonial spaces.
- ❖ Feature north-facing amphitheater with flexible capacity
- ❖ Includes community garden and integrates the pollinator garden as a central feature
- ❖ Includes active recreation: pickleball courts (4), skate park, bike pump track (Buffer), centralized family play area
- ❖ Includes 7 units of employee housing (2-story max)



CONVERSATIONS &
DESIGN

*DESIGN SESSION 2 &
SURVEY #2*

Review of 3 concepts and
provide feedback

Rate each concept from
“can’t imagine this” to “I
love this”

What do you like about
each and what would you
change?

CONVERSATIONS & DESIGN

DESIGN SESSION 2

DATA SHEET for CONCEPT DESIGN FEEDBACK Thorpe Park Annex Community Meeting - June 11, 2022

Name (optional): _____

Instructions:

Please indicate your level of agreement for each Concept Design by filling in the on the line that best describes your opinion. Please describe why in the space provided on the next page (over).

Concept A - Back to Nature

_____ _____ _____ _____ _____

Can't imagine this design Love this idea

Concept B - Family, Fitness, Fun

_____ _____ _____ _____ _____

Can't imagine this design Love this idea



CONVERSATIONS & DESIGN

COMMUNITY SURVEY #2

- Online survey
Community Forum
- Open to all
community members
- Open for 5 weeks
- 631 Responses

Share your opinion on three design concepts for the Thorpe Park Annex.

This topic is closed

Introduction

Feedback

Your Response

Outcome

The City of Flagstaff Parks, Recreation, Open Space, and Events division with their partners at Southwest Decision Resources and Wheat Design Group invite the Flagstaff community to review and comment on 3 DRAFT design concepts for the future of the Thorpe Park Annex Parcel. These three designs were developed based on key stakeholder interviews, robust online community survey results, and an on-site initial design session.

Ultimately, the community supported elements from the three designs will be integrated into a final design concept for City Council's review and approval in the Fall of 2022.

LISTENING AND LEARNING

Vested partner discussions

Community Survey

Virtual information sessions

Values, Visions,
Potential
Programming

CONVERSATIONS & DESIGN

Design Session 1 Design Session 2

Get to know the
parcel

Design Concept A

Design Concept B

Design Concept C

Build a Park

REFINEMENT/APPROVAL

Data refinement/coding

City Council Review/approval

Public release

Concept 1

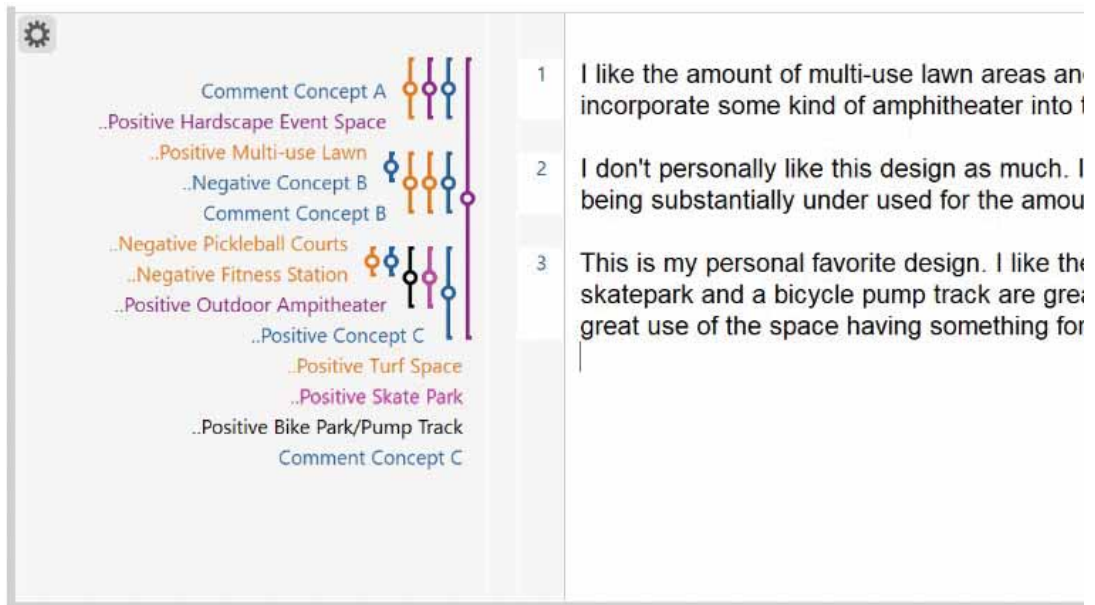
Concept 1b

Selected
Final
Design

Fall 2022

GETTING TO THE FINAL CONCEPT

- Combination of initial concepts A, B, and C
- Utilizing coded data and subsequent synthesis
 - 631 survey responses
 - 1,435 open ended answers
- Planning team review and refinement
- Coding outputs/reports



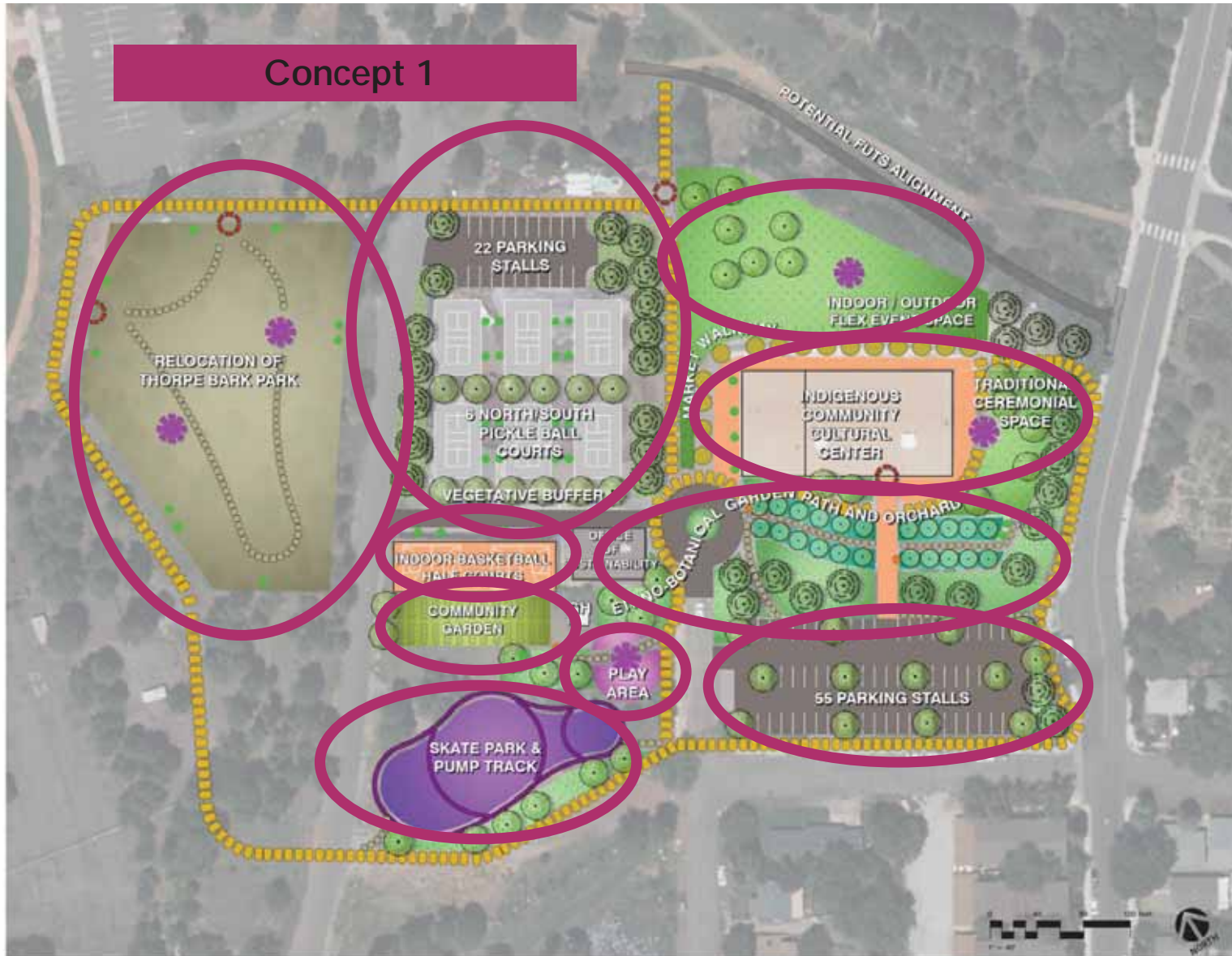
FINAL CONCEPTS FOR REVIEW

Elements common to both final concepts:

- Community garden
- Ethnobotanical garden and orchard
- Event space
- Fitness loop
- ICCC & Indigenous ceremonial space
- Market space
- Pickleball courts
- Play area
- Skate park/pump track



Concept 1

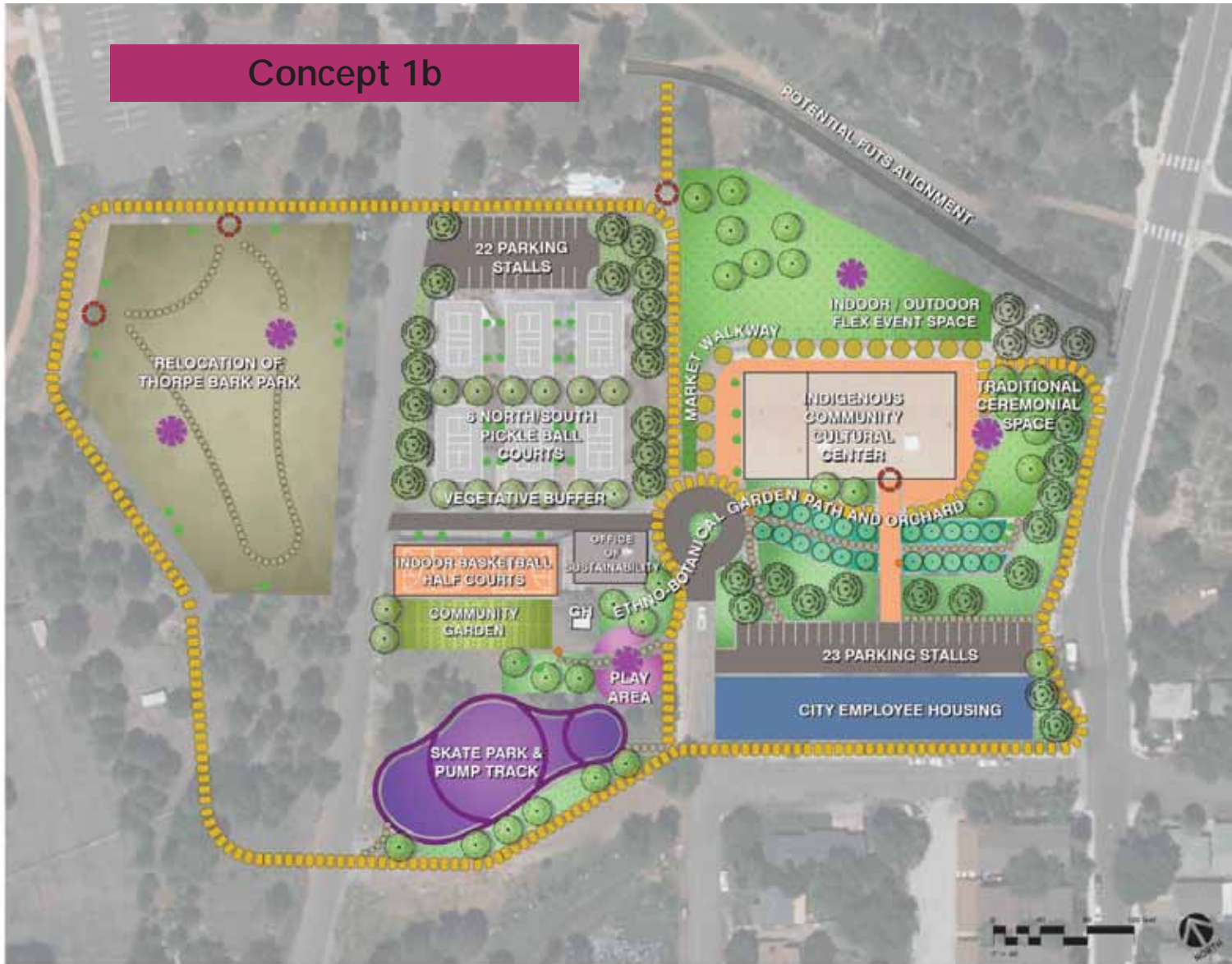


LEGEND:

- Re-Vegetation
- Pollinator
- Turf
- 15' Path
- 10' Path
- 5' Path
- Gathering Space
- Bench/Table
- Interpretive Signage
- Entry Point



Concept 1b



LEGEND:

-  Re-Vegetation
-  Pollinator
-  Turf
-  15' Path
-  10' Path
-  5' Path
-  Gathering Space
-  Bench/Table
-  Interpretive Signage
-  Entry Point



The background of the slide is a dark, textured surface filled with numerous question marks of varying sizes and shades of gray, creating a sense of depth and inquiry.

QUESTIONS ABOUT HOW WE GOT
HERE?