

HOTEL
MONTE VISTA

Flagstaff Regional Plan Update for 2045

Heritage Preservation Commission

March 16, 2022

Mark Reavis & Sara Dechter



DOOR
&
HING

THE WINE LOFT
ARTISTS

ARTISTS

DOWNTOWN FLAGSTAFF
County Offices
County Court
Post Office



Today's Presentation

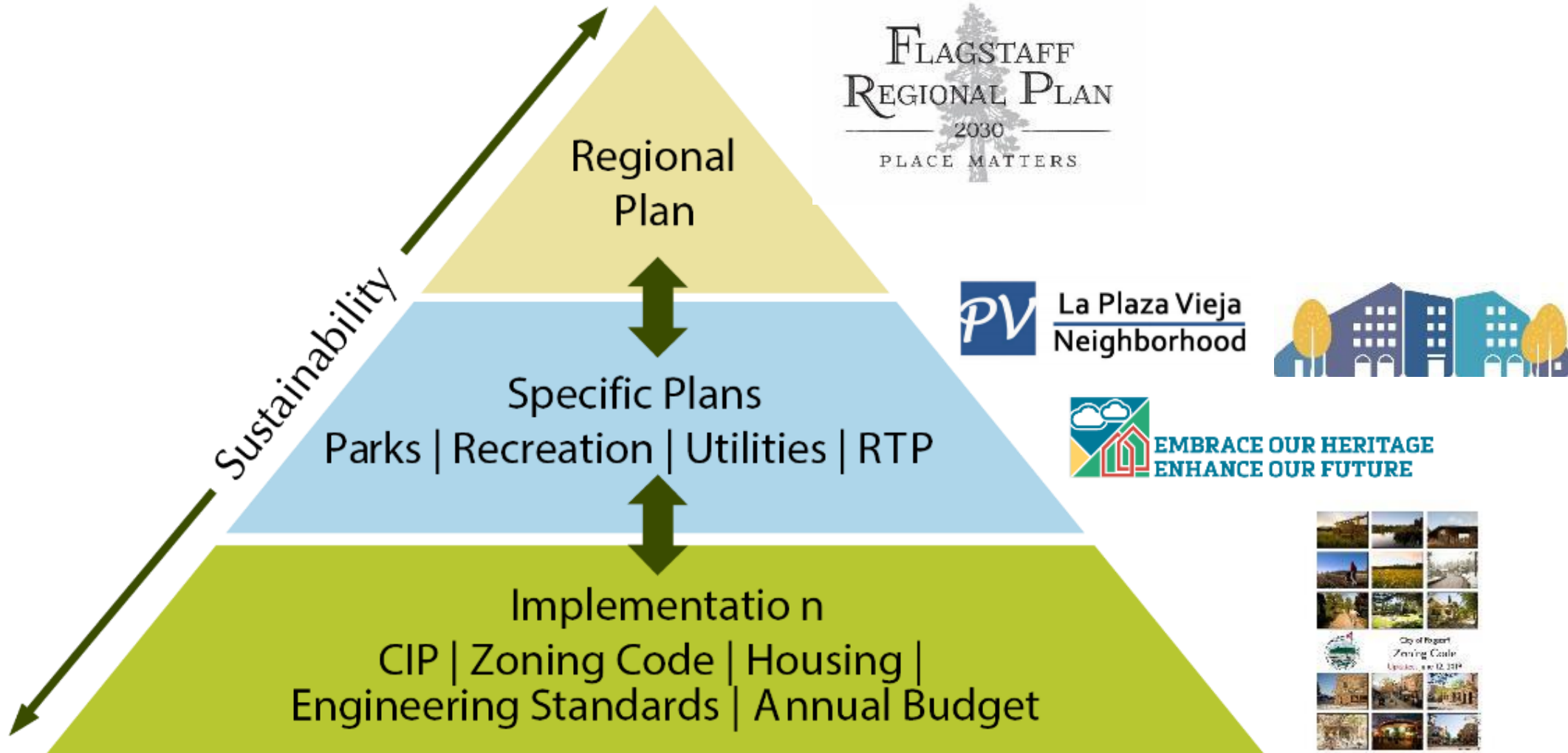
- What is the Regional Plan?
- What is in the Flagstaff Regional Plan 2030?
- What is being done to update the Regional Plan?
- Strengths, Weaknesses, Opportunities, and Threats (SWOT)





What is the Regional Plan

Hierarchy of Planning Documents





Why is it a “Regional Plan”?

City of Flagstaff

- Serves as the General Plan
- Must be ratified by voters every 10 years
- Supports land use decisions, policy making, the 100-year water supply designation and transportation planning plus many other efforts

Coconino County

- Is an amendment to the County Comprehensive Plan*
- Adopted by the Board of Supervisors as a Major Amendment
- Provides a map of area and place types that is further refined by area plans

*The Comprehensive Plan has no land use map.

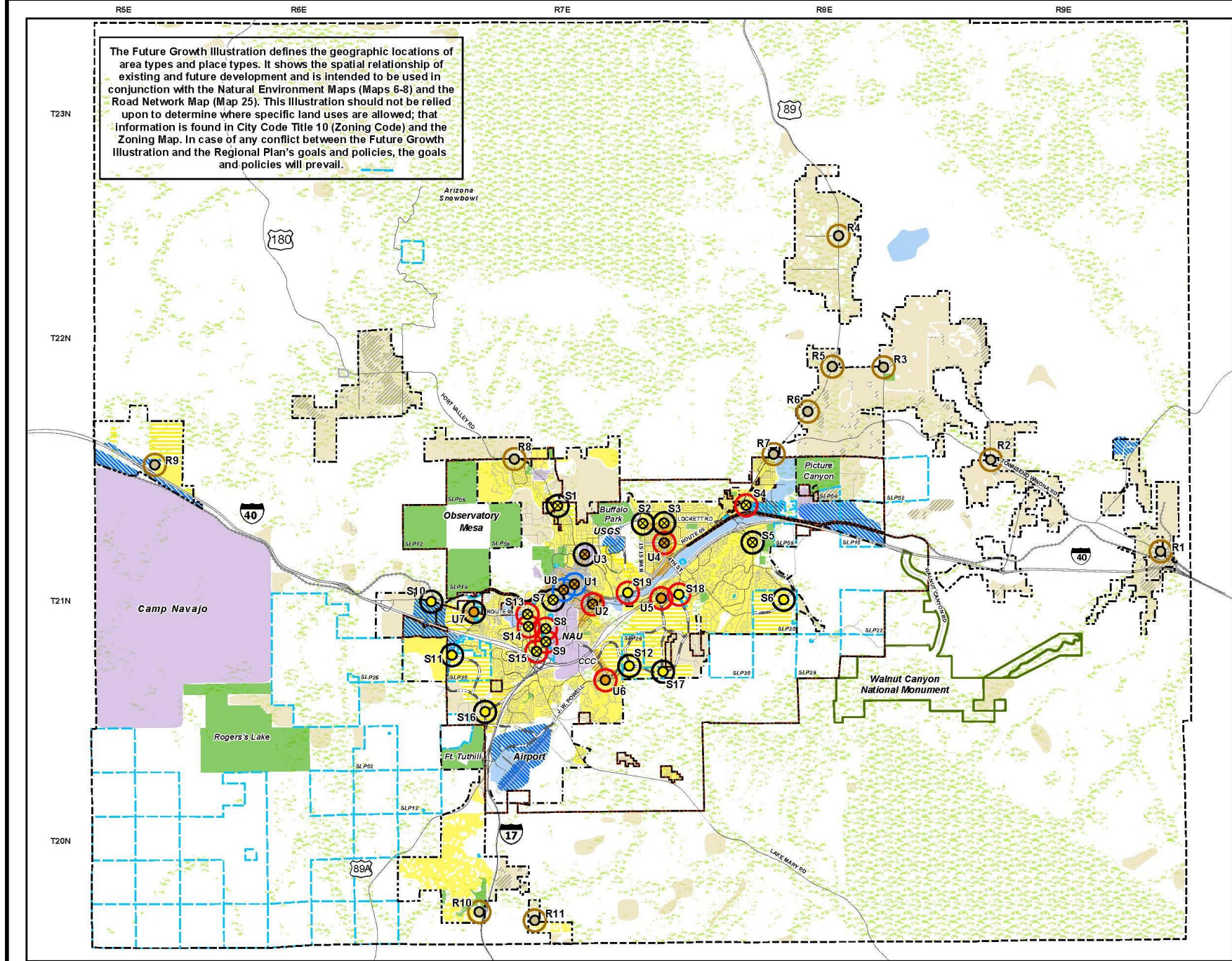
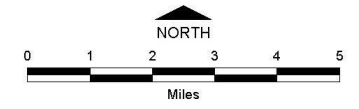
The Future Growth Illustration defines the geographic locations of area types and place types. It shows the spatial relationship of existing and future development and is intended to be used in conjunction with the Natural Environment Maps (Maps 6-8) and the Road Network Map (Map 25). This Illustration should not be relied upon to determine where specific land uses are allowed; that information is found in City Code Title 10 (Zoning Code) and the Zoning Map. In case of any conflict between the Future Growth Illustration and the Regional Plan's goals and policies, the goals and policies will prevail.

Map 21:
FUTURE GROWTH ILLUSTRATION

- FMPO Boundary
- Urban Growth Boundary
- Rural Growth Boundary
- City Limits
- Future Activity Centers**
 - Suburban Activity Center (S1)
'x' symbol identifies existing center
 - Urban Activity Center (U1)
'x' symbol identifies existing center
 - Rural Activity Center
- Regional Scale Pedestrian Shed
- Neighborhood Scale Pedestrian Shed
- Historic Pedestrian Shed
- Rural Pedestrian Shed
- Rural - Existing**
- Rural - Future**
- Suburban - Existing**
- Suburban - Future**
- Urban - Existing**
- Urban - Future**
- Special Planning**
- Existing Employment**
- Future Employment**
- Historic District
- State Lands
- Areas in white retain their existing entitlements

As amended March 22, 2018

Future growth illustrations and plans do not preclude private development entitlements. Please see www.flagstaffmatters.com for an interactive GIS map.



What did the public want the Flagstaff Regional Plan 2030 to do?

- Hold government accountable for publicly derived policy outcomes and goals
- Guide physical and economic development
- Establish priorities for public action
- Direction for complementary private decisions
- Encourage predictable decision making





Overview of Current Plan

Flagstaff Regional Plan 2030

- More emphasis on goals and policies than maps
 - 97 goals
 - 508 policies
- Generalized land use map with clearly identified activity centers based on scenario planning
- Robust basis for transportation modeling with Metroplan based on background data
- Multimodal transportation emphasis
- Foundation for 100-year water supply designation by Arizona Department of Water Quality



Related Goals and Policies

Historic and Cultural Resources

Open Space – Goal OS.1 and Policy OS.1.3

Open lands protect both natural and cultural archeological resources

Community Character – Goal CC.2, Policies CC.2.1. – 13, Goal CC.3, Policies CC.3.1. – 3

Preserve, restore and rehabilitate heritage resources per known benefits for unique resources and our neighborhoods



Historic and Cultural Resources

Transportation – Policy T.4.3

Transportation facility design sensitive to historic resources and sites.

Neighborhood, Housing, & Urban Conservation – Policy NH.1.2, NH.1.5, Goal NH.2, and Policies NH.2.1. – 3

For healthy and diverse neighborhoods respect traditional elements of design with the acknowledgment of the importance of Downtown.



Historic and Cultural Resources

Growth Areas & Land Use –
Policy LU.4.2, Policy LU.10.3,
Goal LU.11, Policy LU.11.5,
Policy LU.11.7

Land use is to balance housing and employment with preservation and protection of our unique natural and cultural settings. Valuing historic neighborhoods as walkable, adaptable at the core of the community

Heritage Preservation

Heritage Preservation has a relationship with many of the Goals and Policies of the Regional Plan.



- Affordable Housing
- Architecture
- Brownfield
- Civic/Public Spaces
- Climate Change
- Context Sensitive Solutions
- Density/Compact Development
- Gateways
- Housing
- Infill and Redevelopment
- Live/Work
- Placemaking
- Preservation (Cultural, Natural Resources).
- Tourism



Process for Updating the Plan

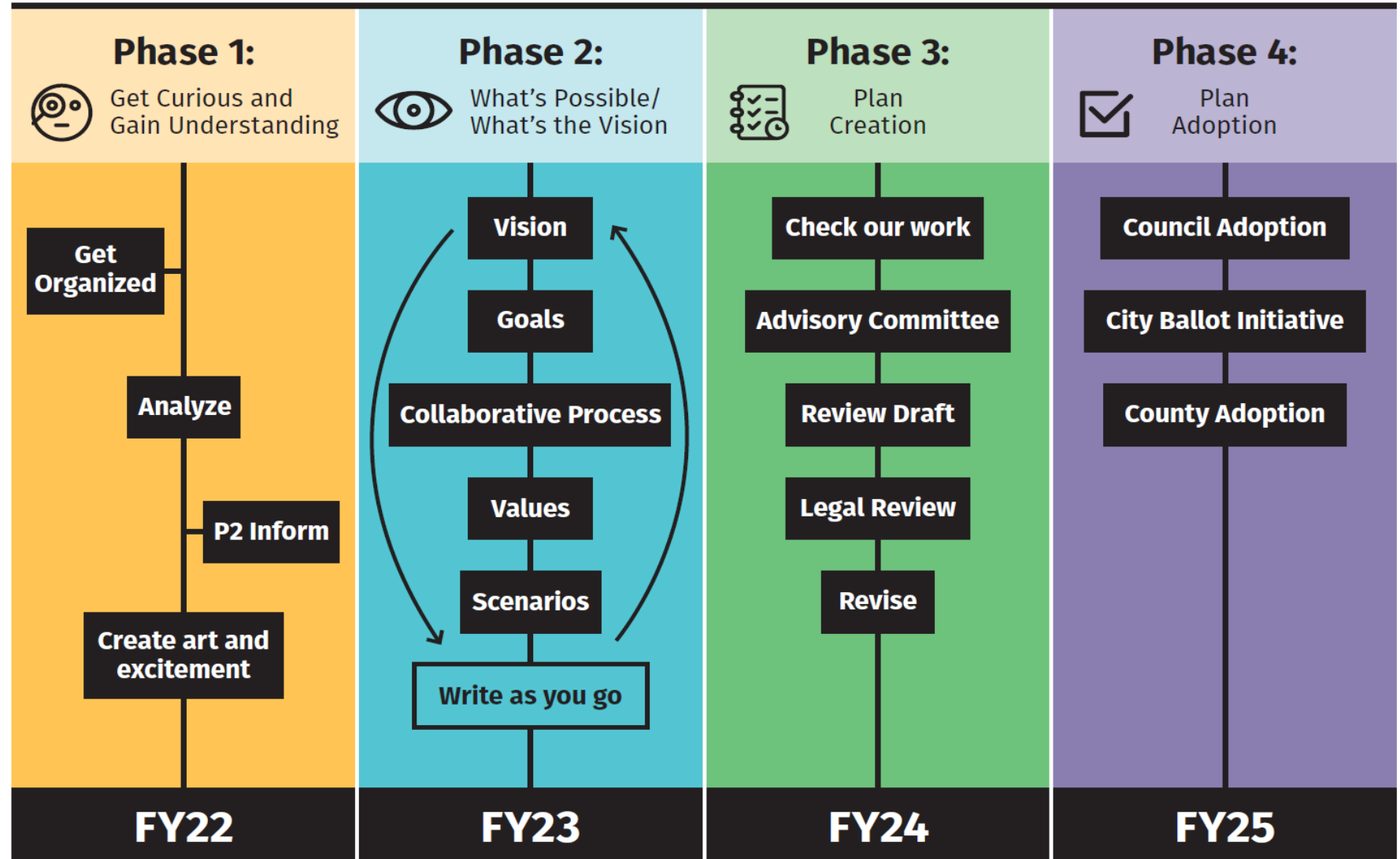


Levels of Public Participation

Plan Development & County Adoption:
Collaborate

City Adoption:
Empower

Regional Plan 2045 Update Process





The Next Regional Plan

What are the ingredients of the Regional Plan?



Data Analysis and Forecasting

- Requires managing and analyzing over 180 data metrics
- Looking within and beyond the plan area
- Scenario planning and sensitivity testing ensure longevity and flexibility of plan



Demographics



Air Quality

Transportation



Energy



Land Use



Emerging Technology

Natural Resources



History



Climate Action



Geography

Housing



Social Issues



Economic



Public Facilities



Emerging Issues



Carbon Neutrality

- Stronger emphasis on bicycle, pedestrian and transit
- More integration of climate change into land use, economic development and housing

Equity and Inclusion

New Housing Affordability strategies

Public Health

- Food Systems
- Health resources and accessibility
- Health system capacity and resiliency

Emerging Technology

- Vehicle Automation and transportation electrification
- Broadband as an essential utility

Project Team Contacts

City of Flagstaff Contact

Sara Dechter, (928) 213-2631

sdechter@flagstaffaz.gov

Coconino County Contact

Melissa Shaw, (928) 679-8868

mshaw@coconino.az.gov



Commission SWOT Analysis

Strengths - What are the strengths of the Flagstaff Regional Plan 2030?

Weaknesses - What are the weaknesses of the Flagstaff Regional Plan 2030?

Opportunities - As we are revising the Flagstaff Regional Plan, what opportunities do we have that we did not in the past?

Threats - What could negatively impact the creation or implementation of an updated Regional Plan?

Link to Digital Whiteboard in the meeting chat. **For Commissioners only.**