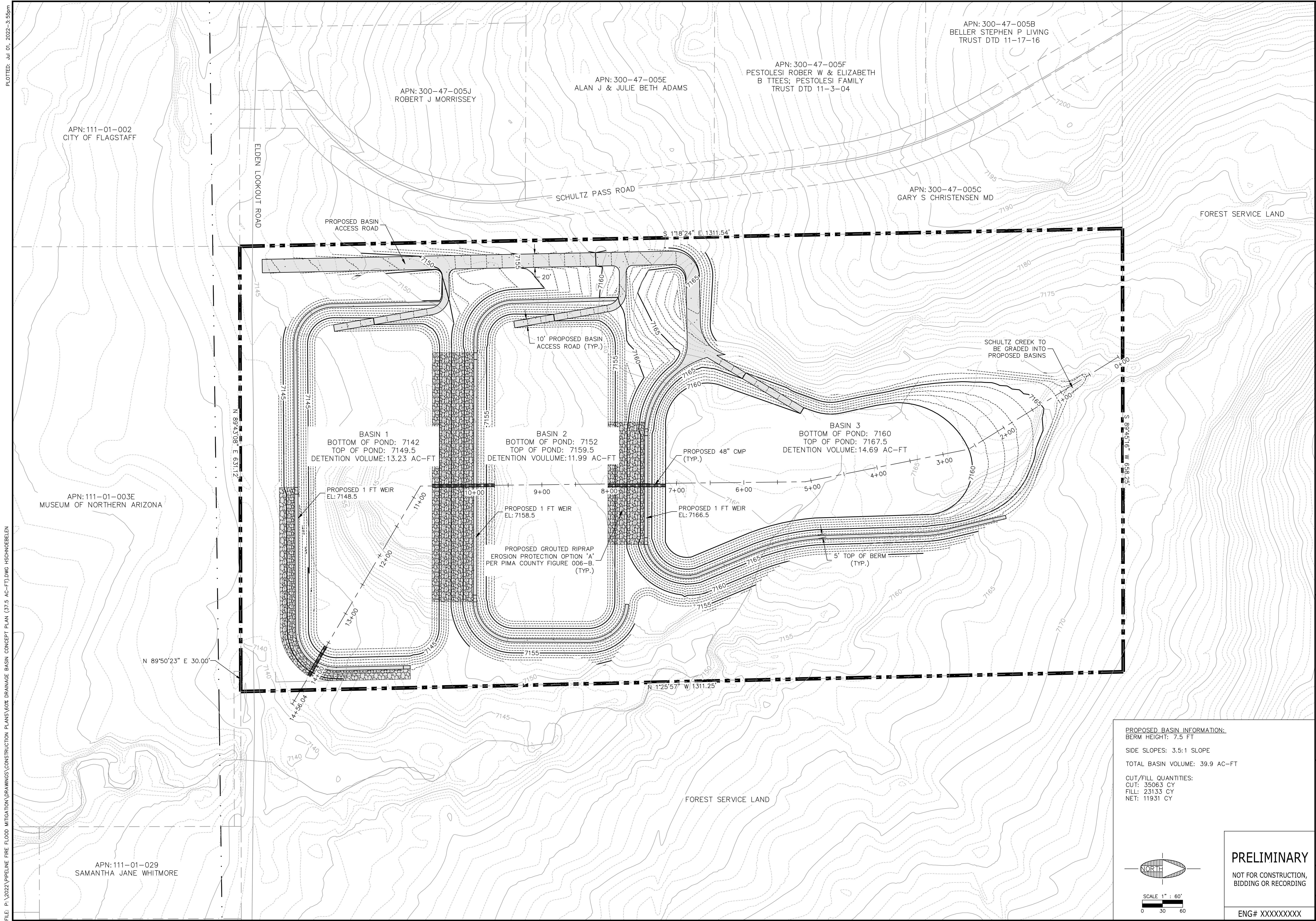


PLOTTED: Jul 01, 2022 - 3:55pm

FILE: P:\2022\PIPELINE FIRE FLOOD MITIGATION\DRAWINGS\CONSTRUCTION PLANS\60% DRAINAGE BASIN CONCEPT PLAN (37.5 AC-FT).DWG HSCHOEBLEN



APN: 111-01-002
CITY OF FLAGSTAFF

APN: 300-47-005J
ROBERT J MORRISSEY

APN: 300-47-005E
ALAN J & JULIE BETH ADAMS

APN: 300-47-005F
PESTOLESI ROBER W & ELIZABETH
B TTEES; PESTOLESI FAMILY
TRUST DTD 11-3-04

APN: 300-47-005B
BELLER STEPHEN P LIVING
TRUST DTD 11-17-16

APN: 300-47-005C
GARY S CHRISTENSEN MD

FOREST SERVICE LAND

APN: 111-01-003E
MUSEUM OF NORTHERN ARIZONA

APN: 111-01-029
SAMANTHA JANE WHITMORE

BASIN 1
BOTTOM OF POND: 7142
TOP OF POND: 7149.5
DETENTION VOLUME: 13.23 AC-FT

BASIN 2
BOTTOM OF POND: 7152
TOP OF POND: 7159.5
DETENTION VOULUME: 11.99 AC-FT

BASIN 3
BOTTOM OF POND: 7160
TOP OF POND: 7167.5
DETENTION VOLUME: 14.69 AC-FT

PROPOSED 1 FT WEIR
EL: 7148.5

PROPOSED 1 FT WEIR
EL: 7158.5

PROPOSED 1 FT WEIR
EL: 7166.5

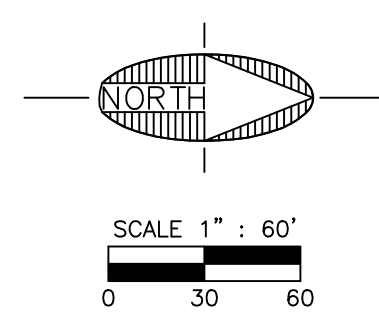
PROPOSED GROUDED RIPRAP
EROSION PROTECTION OPTION 'A'
PER PIMA COUNTY FIGURE 006-B.
(TYP.)

PROPOSED 48" CMP
(TYP.)

5' TOP OF BERM
(TYP.)



SCHULTZ CREEK TO
BE GRADED INTO
PROPOSED BASINS

PROPOSED BASIN INFORMATION:
 BERM HEIGHT: 7.5 FT
 SIDE SLOPES: 3.5:1 SLOPE
 TOTAL BASIN VOLUME: 39.9 AC-FT
 CUT/FILL QUANTITIES:
 CUT: 35063 CY
 FILL: 23133 CY
 NET: 11931 CY



PRELIMINARY
NOT FOR CONSTRUCTION,
BIDDING OR RECORDING

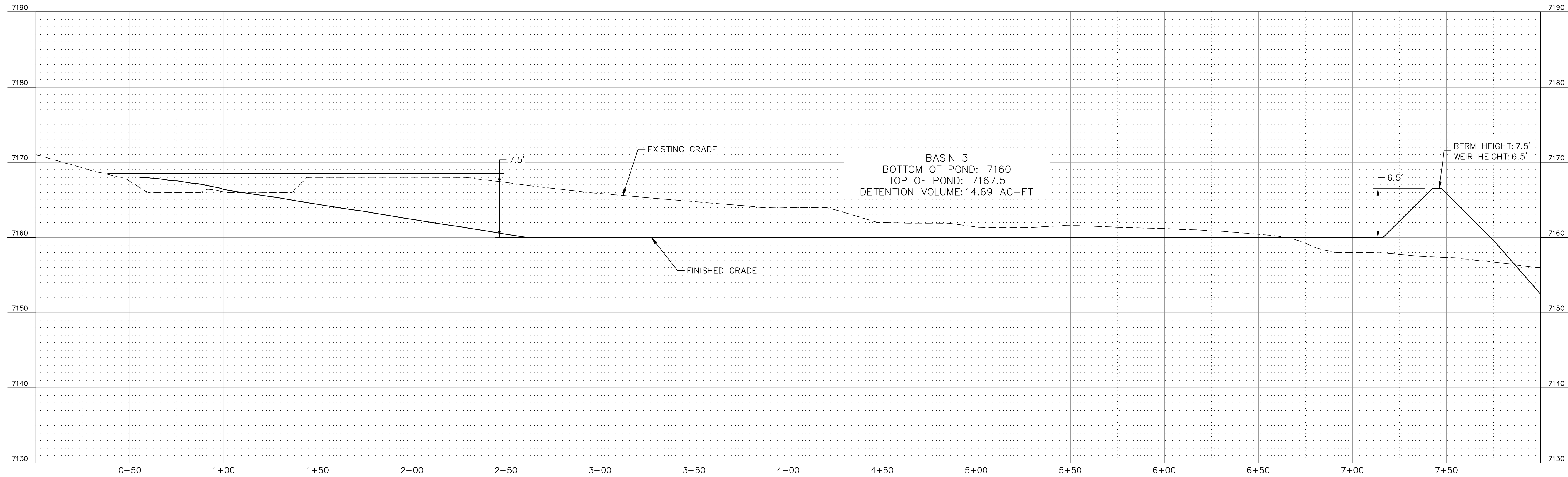
ENG# XXXXXXXX

JOB NO: TBD		DATE: JUL 22	SCALE: AS SHOWN	DRAWN: HAS	DESIGN: HAS	CHECKED: GEC/SCI
1201\N\Drawings\60% Flagstaff\02\26001 Proposed Fire Flood Mitigation\37.5 AC-FT 928.541.1075 fox www.swi2.com		 Shephard Wesnitzer, Inc.				
NO.	DESCRIPTION	DATE	BY			
Call at least two full working days before you begin excavation.  ARIZONA 811 Arizona Blue Stakes, Inc.		008 8-1-1 / 1-800-514-1111 (722-5348)				
DRAWING NO.		EX01				
SHT NO.		OF				
1		2				

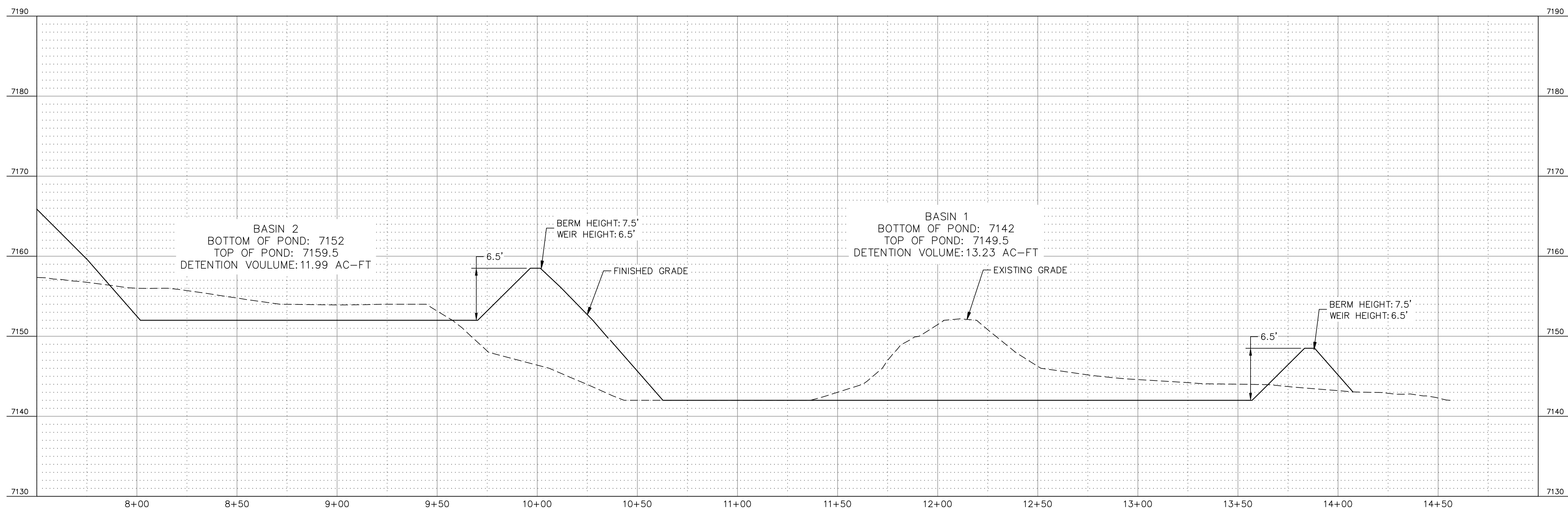
FLAGSTAFF
ARIZONA

COCONINO COUNTY FLOODING

PROPOSED BASINS EXHIBIT



BASINS PROFILE (1)
 H: 1" = 30' V: 1" = 7.5'



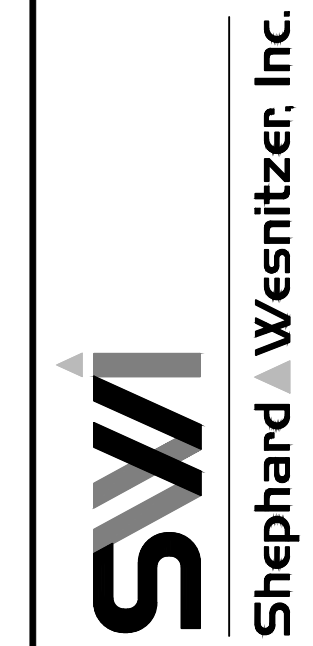
BASINS PROFILE (2)
 H: 1" = 30' V: 1" = 7.5'

FLAGSTAFF
 ARIZONA

COCOINNO COUNTY FLOODING

JOB NO:	TBD
DATE:	JUL 22
SCALE:	AS SHOWN
DRAWN:	HAS
DESIGN:	HAS
CHECKED:	GEC/SCI

1201 W. Dillard Ave. Suite 601
 Flagstaff, AZ 86001
 Phone: 928.777.3583
 Fax: 928.777.3744
 928.541.1075
 www.swi-gz.com



NO.	DESCRIPTION	DATE	BY

Call at least two full working days before you begin excavation.

ARIZONA 811
 Arizona Blue Stakes, Inc.
 800-514-1111

PRELIMINARY
 NOT FOR CONSTRUCTION,
 BIDDING OR RECORDING

DRAWING NO.
EX02

SHT NO. OF
 2 OF 2

ENG# XXXXXXXX