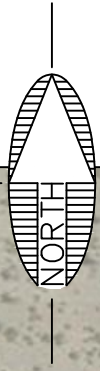
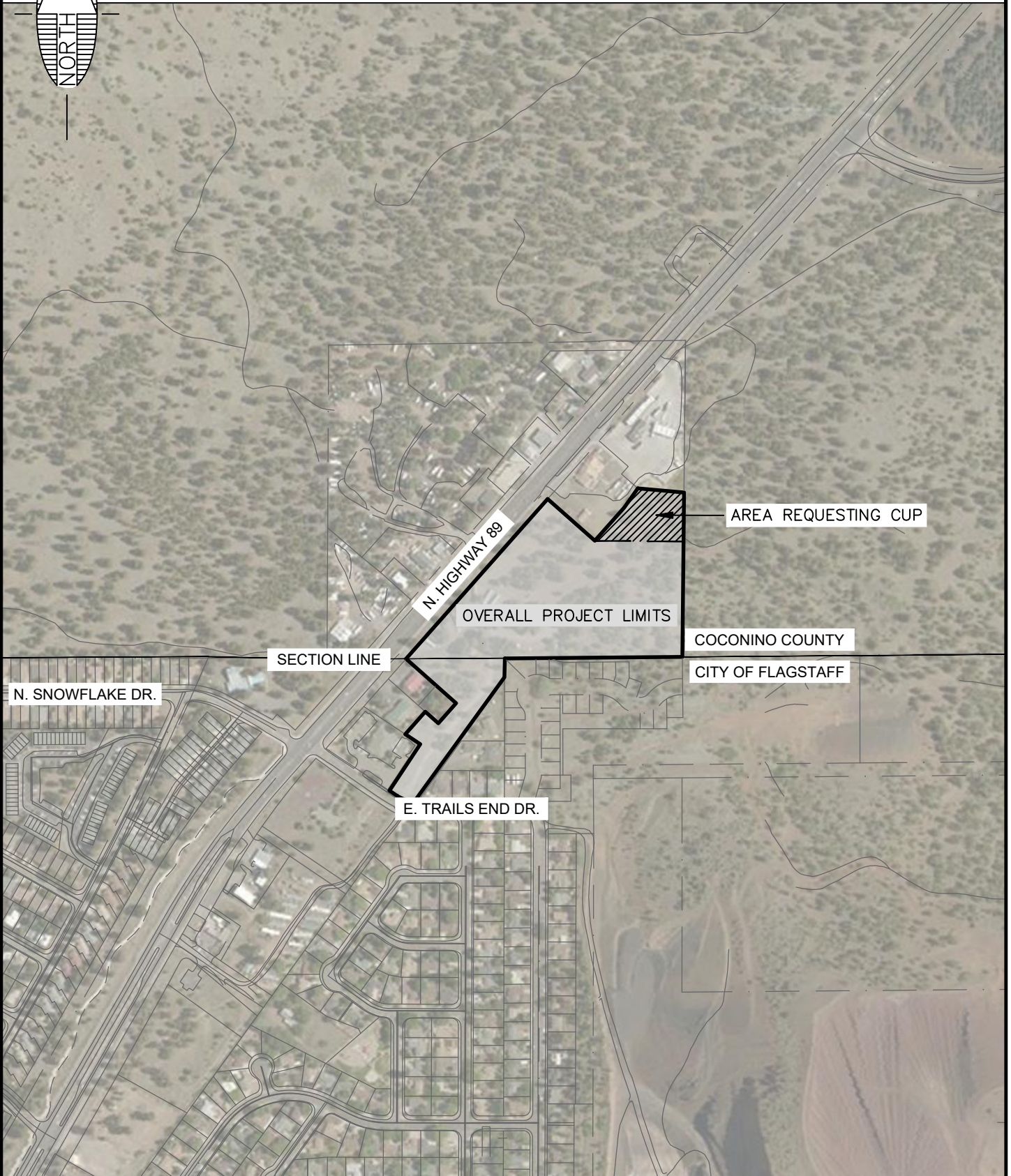


PLOTTED: Sep 27, 2022-8:29am



LOCATED IN NW QUARTER OF SECTION 5 AND THE SOUTH HALF OF SECTION 32, TOWNSHIP 21 NORTH AND 22 NORTH, RANGE 8 EAST, GILA AND SALT RIVER MERIDIAN, COCONINO COUNTY, FLAGSTAFF, ARIZONA



FILE: P:\2020\20136\DRAWINGS\CUP\20136 - VICINITY MAP.DWG CPHAM



Shephard Wesnitzer, Inc.

110 W. Dale Avenue  
Flagstaff, AZ 86001  
928.773.0354  
928.774.8934 fax  
www.swiaz.com

JOB NO.	20136
DATE	SEP 22
SCALE	1"=500'
DRAWN	CNP
DESIGN	CNP
CHECKED	SCI

FLAGSTAFF REHAB CAMPUS

FLAGSTAFF ARIZONA

VICINITY MAP

SHEET  
**1**  
OF 1