





Downtown Connection Center  
(DCC)  
Art Concepts:  
Art Glass and Southside Grove  
Sculpture

Jana Weldon,  
Beautification, Arts & Sciences Manager



The central graphic is a dark blue rectangle containing white text and logos. At the bottom left is the official seal of the City of Flagstaff, Arizona, established in 1882, featuring a landscape with a mountain, a river, and a flag. At the bottom right is the 'TEAM FLAGSTAFF' logo, which includes the text 'TEAM FLAGSTAFF' above a stylized sunburst graphic and the slogan 'WE MAKE THE CITY BETTER' below it.





# Downtown Connection Center (DCC) Art Concepts





# Agenda



- **Design Process Overview**
  - Artist Selection
  - Community Input Prior to Design
  - Design & Reviews
- **Art Glass**
  - Location
  - Imagery
  - Light
- **Southside Grove Sculpture**
  - Phased Location
  - Trees
  - Time-Table



# Artist Selection



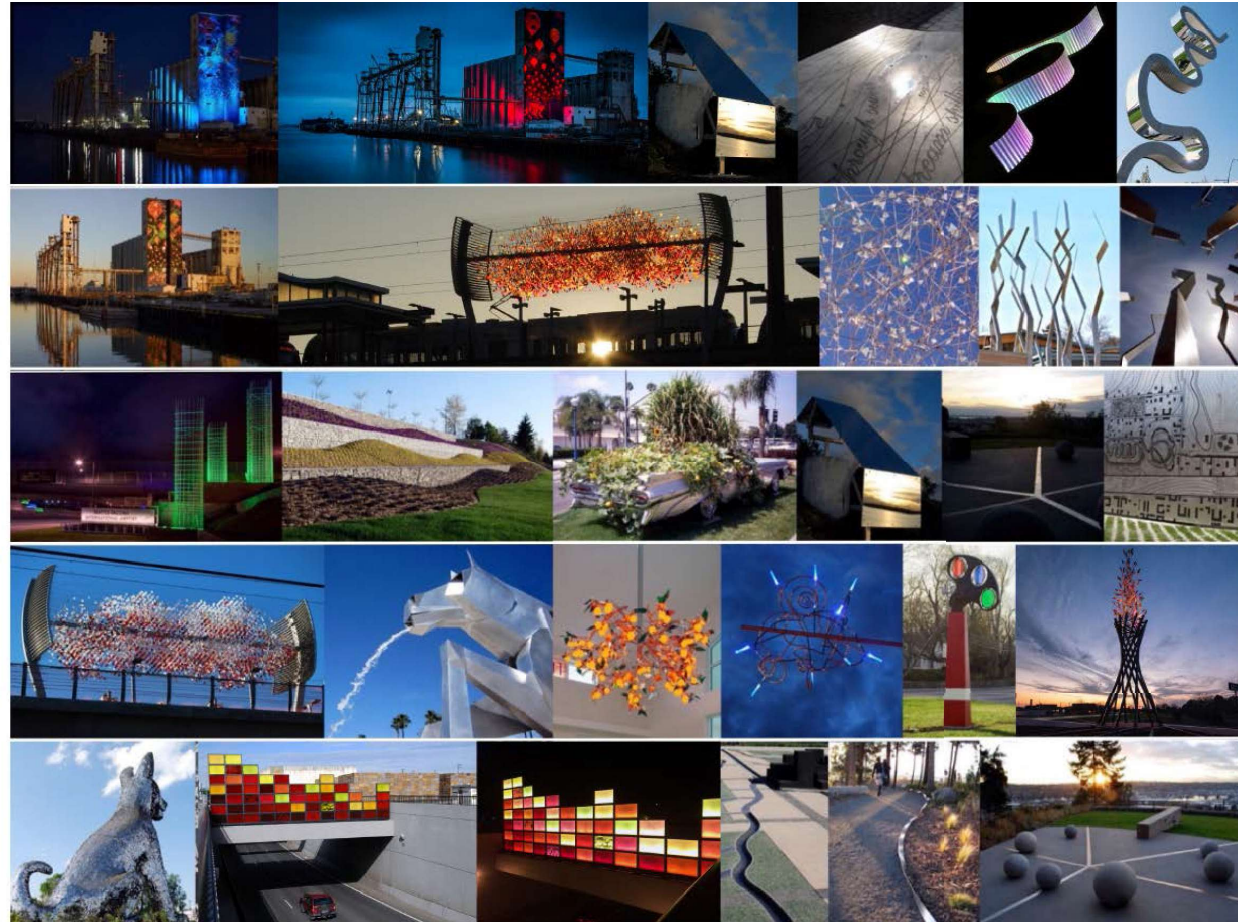
Request for Statement of Qualification (RSOQ) Process to select an artist identify and add multiple integrated art and beautification elements in tandem with the entire site design for the Downtown Connection Center. Artist to work with Mountain Line's cross-disciplinary team.

## Selection Panelists:

- 2 members of the Beautification and Public Art Commission;
- A Senior Urban Designer, AECOM
- A Mountain Line Representative
- City Planning Representative
- Southside Business Owner
- Community Member who grew up in the Southside; Southside Property Developer

# Artist Selection

# HADDAD | DRUGAN



**TEAM FLAGSTAFF**  
WE MAKE THE CITY BETTER



# Artist Selection



## Design Contracts

- In December 2020, City Council approved Haddad/Drugan for a design services contract in the amount of \$25,000 for the initial design-team work.
- A subsequent amendment in the amount of \$22,000 is taking the Art Glass and Southside Grove sculpture art concepts to 100% of design.
- Three other projects identified in the initial contract will be developed by other artists
- All funding for DCC projects from design through installation is from the dedicated Bed, Board & Beverage Funds, either Beautification or Arts & Sciences



# Community Input Prior to Design



**Inclusion of vested community prior to preliminary concepts– an opportunity to have the artist hear the stories and the significance of the place.**

- Community Survey
- Photo Contest
- On Site Community Meeting
- Neighborhood & Cultural Center Tours



# Community Input Prior to Design

## Photo Contest

"This contest will help the Artists learn more about the Southside community, both the physical and social landscape by seeing how the community sees and reveals itself and the places that foster its unique identity. For each photo, please provide a sentence as to why or how the photo reveals something about the Southside."

- 1) Photos of special places or features that "bring light" to the Southside.
- 2) Photos that represent community or connection in the Southside.
- 3) Photos that evoke going places, or the future of the Southside.





# Community Input Prior to Design

## Community Forum Survey

Sample Questions:

- What is your favorite aspect of Northern Arizona's or Flagstaff's landscape or history?
- Who are the past and present heroes of the Southside and why?
- What is the most fascinating discovery you've found on the Southside?

**Received approximately 70 responses to share with artists**



# Community Input Prior to Design



## Artist visit highlights May 11-13, 2021

- Community meeting with Southside residents & business owners
- City Team for Rio de Flag
- Walking tour with Historic Preservation officer and administrator of the Southside Plan
- Regional Hiking
- Lowell Observatory & other cultural centers





# Design and Review



## SITE INSPIRATIONS

## Mountain Line Identity



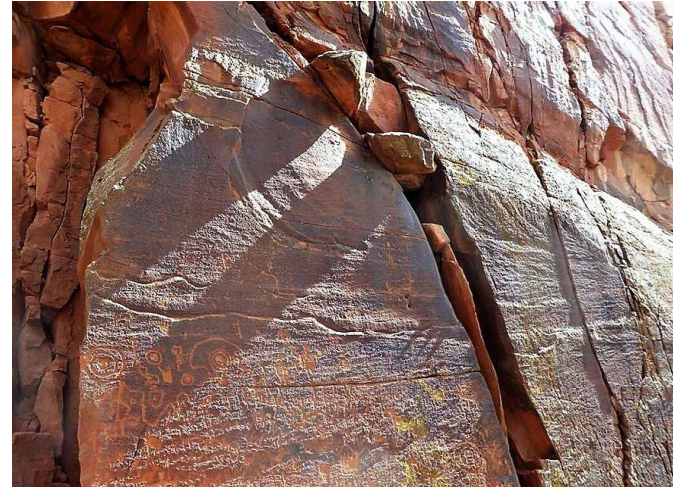
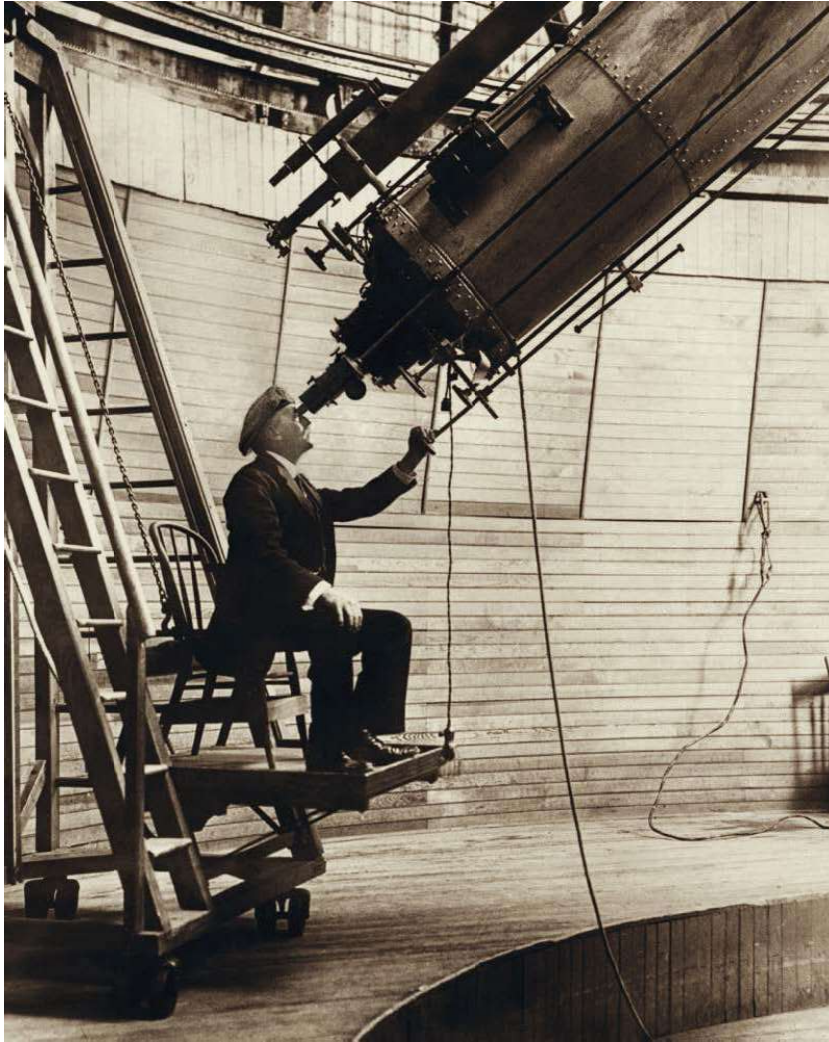
## San Francisco Peaks



## Ponderosa Pine Trees & Logging History



## Telescopes, Sighting, and Solar Alignments



# Southside Community





# Design and Review



## ART PROJECTS



### LEGEND

- Building Entry**
  - 1. Suspended sculpture in lobby clerestory
  - 2. Glass art facade above entry door
  - 3. Welcome mat paving art or small sculpture at entry door
  - 4. "Transformer" landmark sculpture and seat in DCC plaza
- Bus Bays**
  - 5. Rotating community art displays on shelter surfaces
  - 6. Unique artist-designed sculptural shelter or roof canopy
- Intersection**
  - 7. Crosswalk paving art on Phoenix Avenue at Mikes Pike Street
  - 8. "Transformer" landmark sculpture and seat in enlarged sidewalk area
- Civic Green**
  - 9. Paving artwork at FUTS trail intersection
  - 10. Sculpture grove with rotating or permanent community sculpture
  - 11. Small gathering place at corner: seating, table, sculpture
  - 12. Large gather space at detention basin: retaining walls, terraces, and landscape form amphitheater
- Rio Bridges**
  - 13. Artist-designed bridge with seating and overlook at Rio de Flag stream
  - 14. Plaques with artist illustrations telling Southside stories on Route 66 bridge railing along Phoenix Avenue
- Southside Gateway**
  - 15. "Transformer" landmark sculpture and seat in landscape on S. Beaver St.

Constellation of ideas presented to the design team and Mountain Line's Southside Stakeholder group in June 2021.



# Design and Review

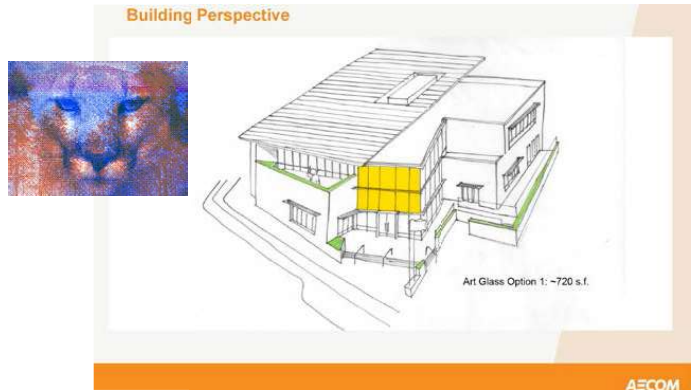
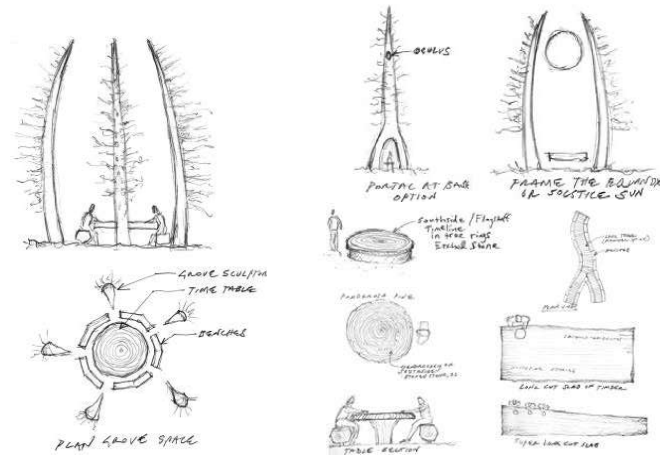


## ART LOCATIONS & PHASES

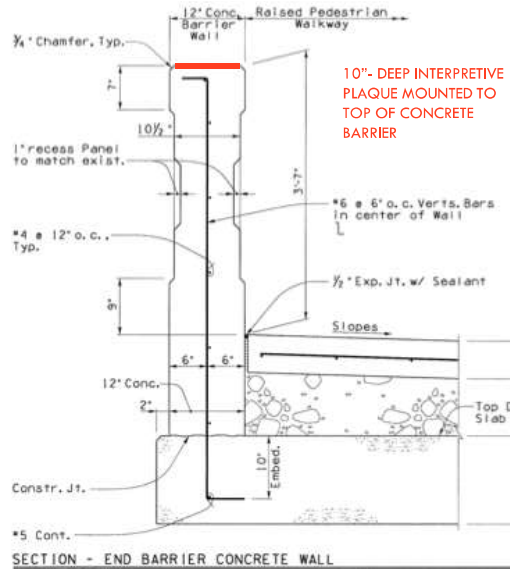


Five ideas presented to BPAC for discussion on August 9, and to Mountain Line's Southside Stakeholder Group and in Mountain Line led public meetings in September and October 2021

1. HISTORIC INTERPRETIVE PANELS ON PHOENIX AVE BRIDGE
2. ROTATING ART CROSSWALKS BY LOCAL ARTISTS
3. ROTATING ART IN BUS SHELTERS
4. ART GLASS ON DCC BUILDING
5. GROVE SCULPTURE



# Rio/Route 66 Bridge Historic Panels



10"- DEEP INTERPRETIVE PLAQUE MOUNTED TO TOP OF CONCRETE BARRIER



- Opportunity for local or regional artist
- Interpretive plaques incorporated with Route 66 Bridge Replacement on Phoenix Avenue
- Adjacency of art to daylighted portion of Rio, Route 66, the railroad, and Southside present rich opportunities and high visibility for storytelling
- Funded and led by Historic Preservation



## Phoenix Avenue or Mike's Pike Crosswalk Mural



- Opportunity for local or regional artist
- Colored thermoplastic adhered to asphalt with heat application
- City of Flagstaff Transportation Engineering are developing an art-crosswalk policy
- Funded out of separate Arts & Sciences project line; project budget to be determined

## Bus Bay Rotating Art (or could be art wrapped electrical cabinets)



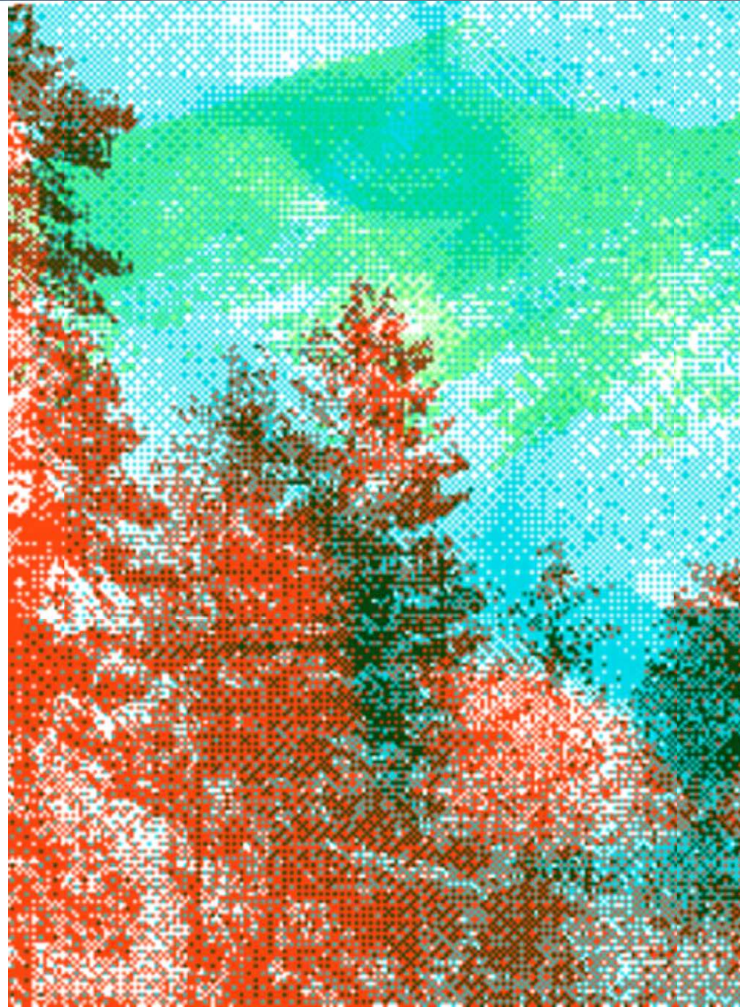
- Opportunities for local and regional visual artists and poets
- Rotating posters or decals incorporated into bus bays or on electrical cabinets
- Funded by separate Arts & Sciences project line; budget tbd



# Design and Review



Haddad/Drugan took two ideas, **Art Glass** and the **Southside Grove sculpture**, and developed the concepts while working with the design team to integrate the art within the evolving design of the DDC.





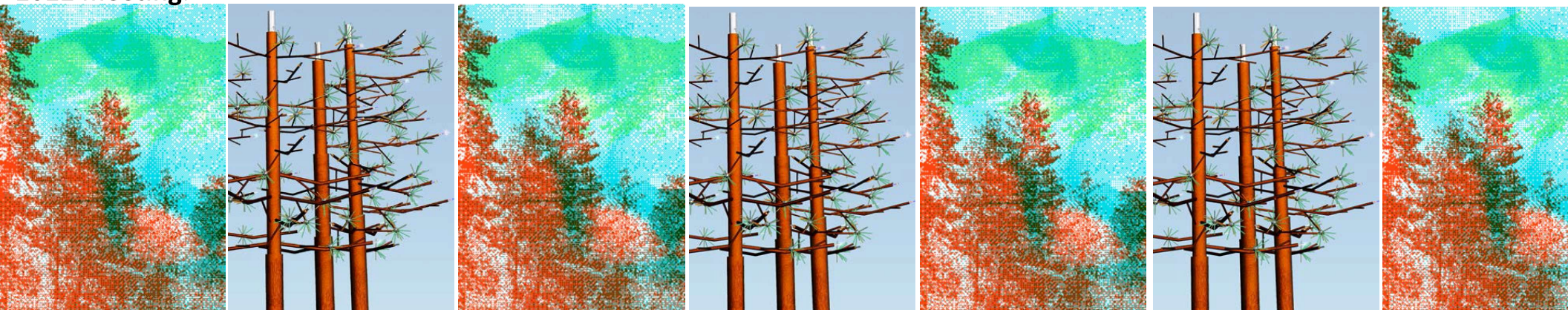
# Design and Review

The developed concepts were presented in the Spring of 2022 for comment to:

- original selection panel members,
- the Southside Community Association,
- Mountain Line's Southside Stakeholder group and Boards,
- Indigenous Commission.

The artist team made some modifications, and the **Beautification and Public Art Commission (BPAC) recommended the Art Glass for Council approval at the May 2022 meeting**, and provisionally recommended the Southside Grove sculpture with some changes.

The artist team incorporated BPAC's direction and other community and upper management comments into the features of the sculpture and **BPAC gave their full recommendation to Council to approve the Southside Grove sculpture at the November 2022 meeting**.

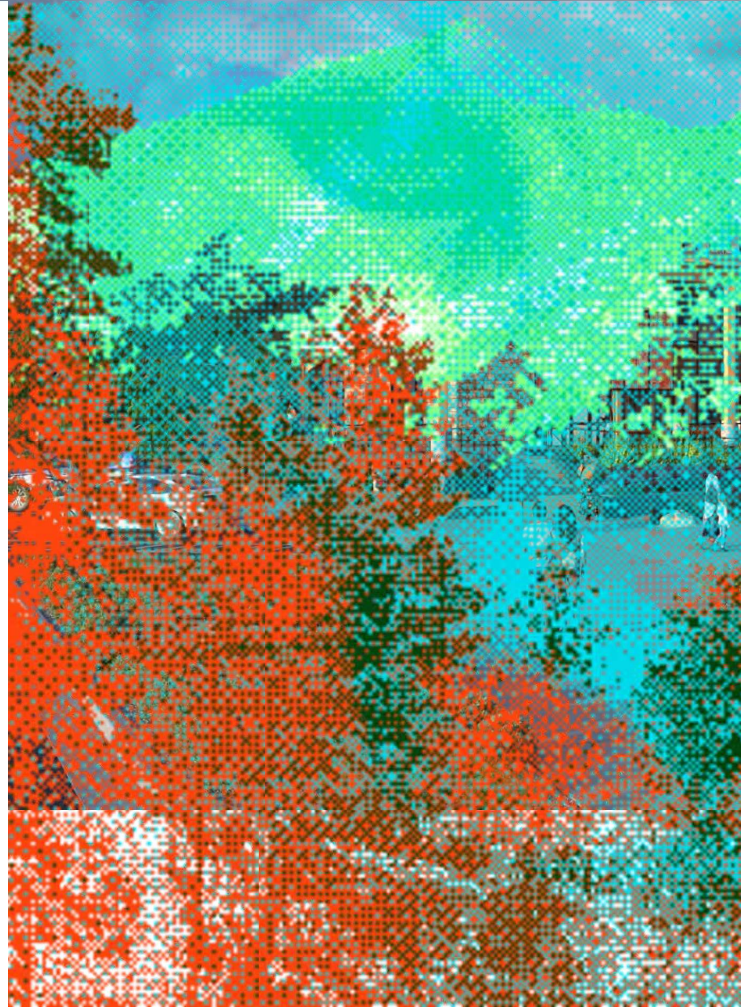




# Art Glass and Southside Grove Sculpture



The estimated cost of the upcoming artist contract to fabricate the art glass, and fabricate and install the sculpture is \$450,000 to \$480,000, which will be taken from Beautification with Bed, Board, and Beverage funding.





# Art Glass

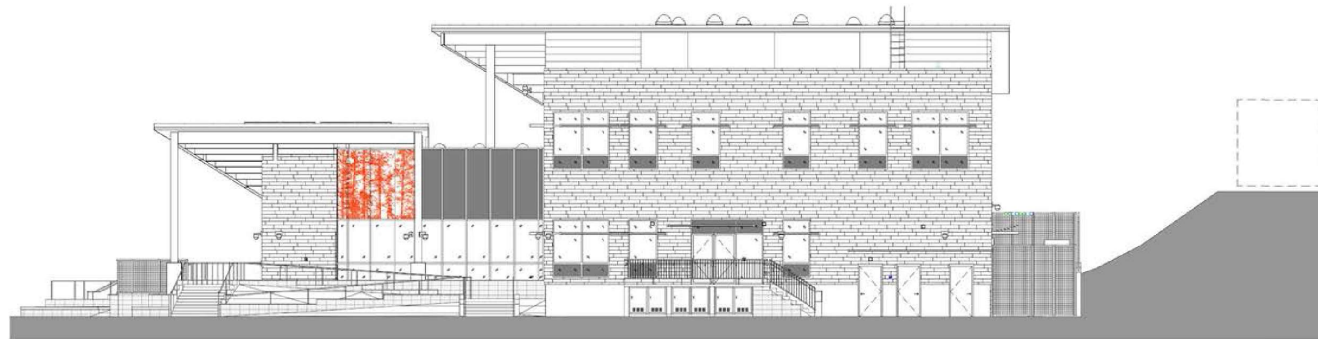




# Art Glass



3 SOUTH ELEVATION  
1/8" = 1'-0"

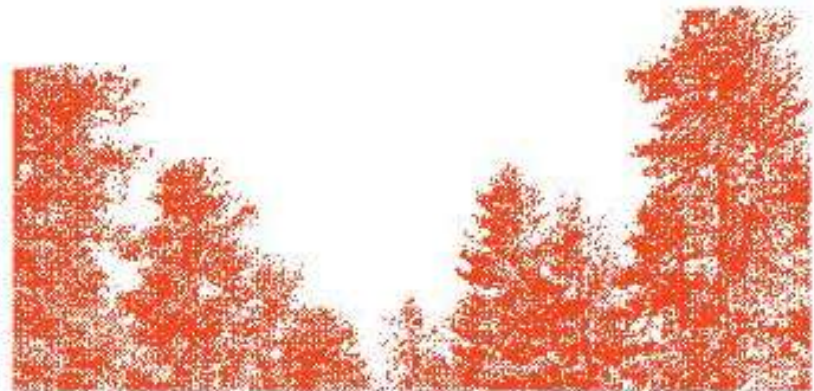


4 EAST ELEVATION  
1/8" = 1'-0"

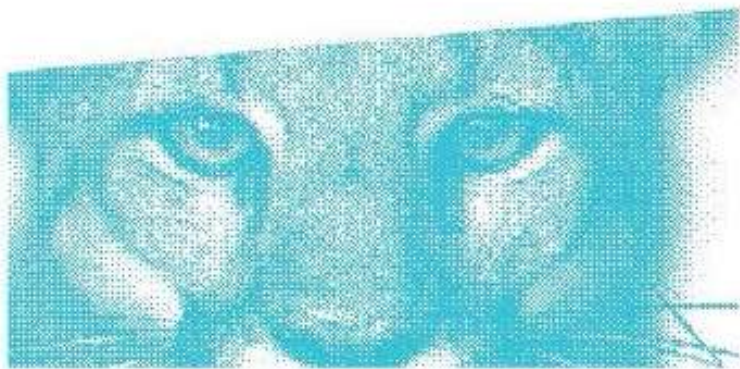
## South Façade: Glass Imagery Overlaps 3 Elements in 3 Colors



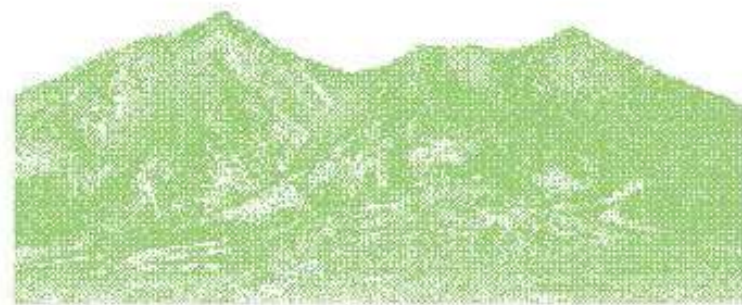
3 Images Overlaid



Ponderosa Pines



Mountain Lion



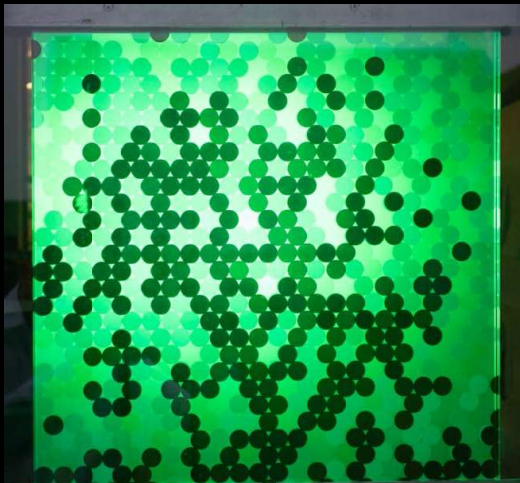
San Francisco Peaks

## Day and Nighttime Appearance of Glass Sample

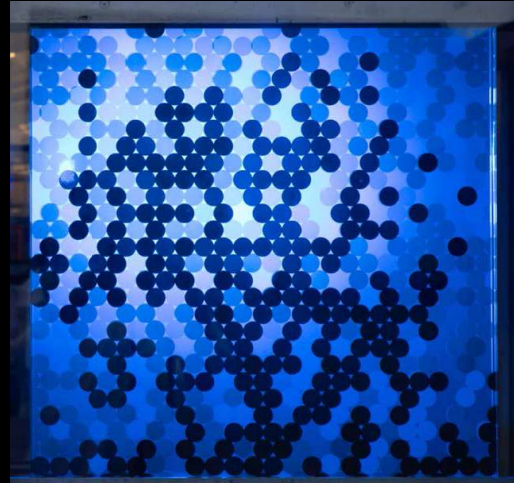


DAY

Individual dots will be a little less than 1"-diameter



NIGHT: Green Light



Blue Light



Red Light

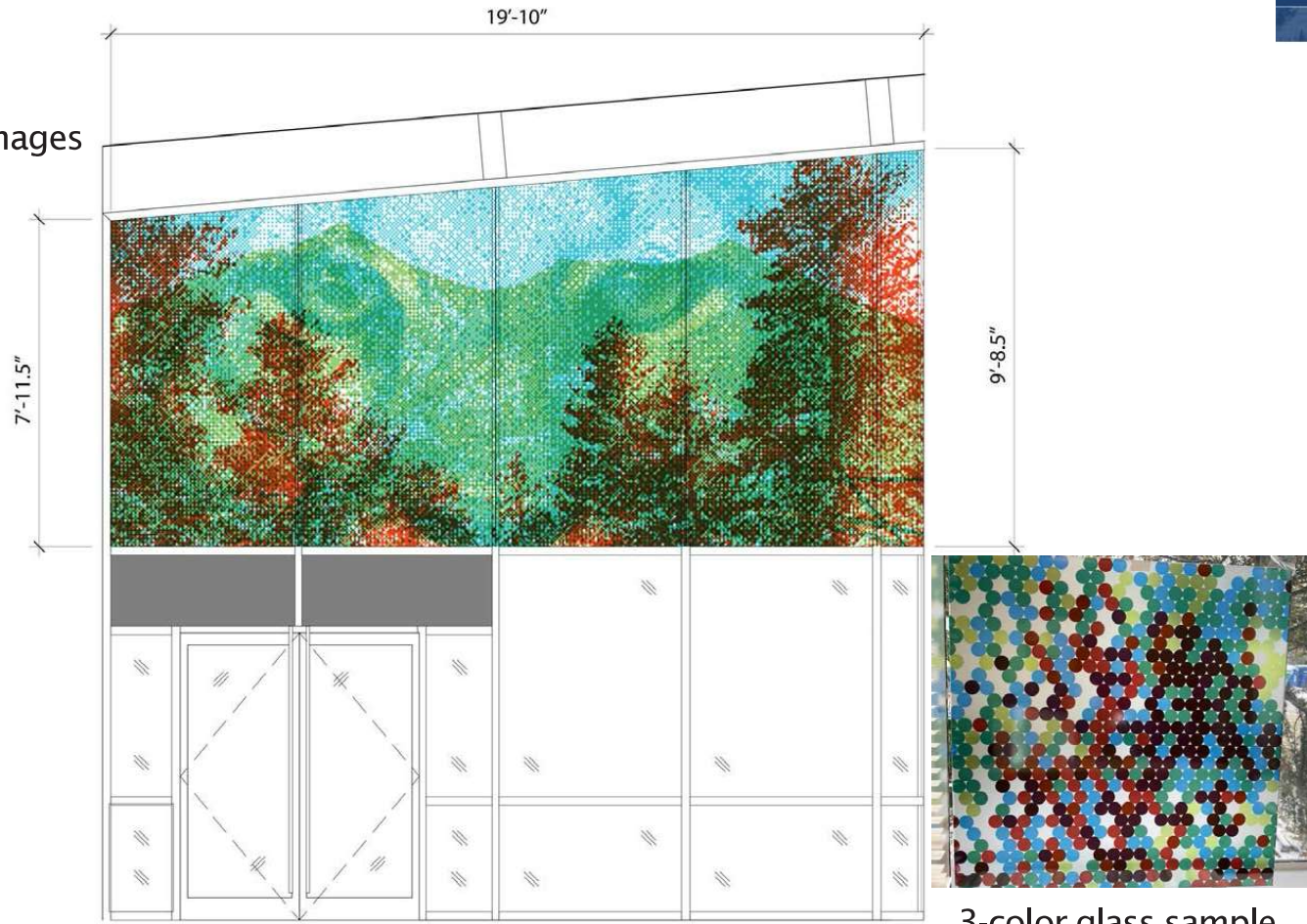


# Art Glass

Flagstaff DCC – Art Glass – Haddad|Drugan – 12/21/2022



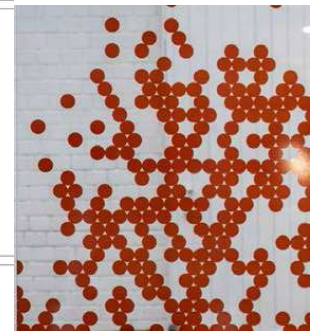
South Art Glass — 3 Colors/Images



1 CW4 ELEVATION  
1/2" = 1'-0"



# Art Glass

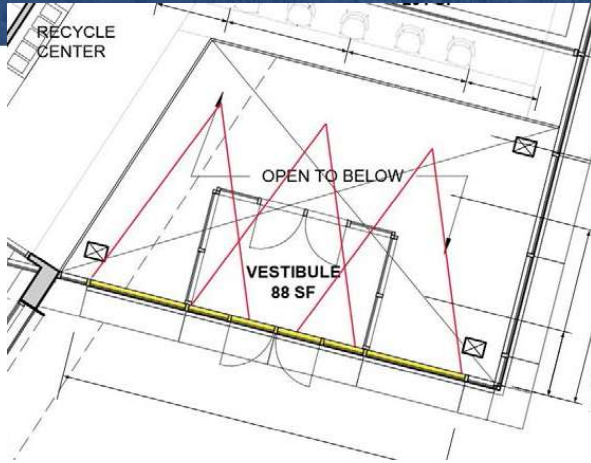


1-color glass  
sample

2 CWS ELEVATION  
1/2" = 1'-0"



# Art Glass



3 fixtures, configuration TBD with updated plan



Color Kinetics ColorBlast



Color Kinetics Data Enabler Pro



Color Kinetics iPlayer Controller



40-degree beam mock-up



light filling whole room

Blue Light



Flagstaff DCC – Art Glass – Haddad|Drugan – 12/21/2022

Cyan Light



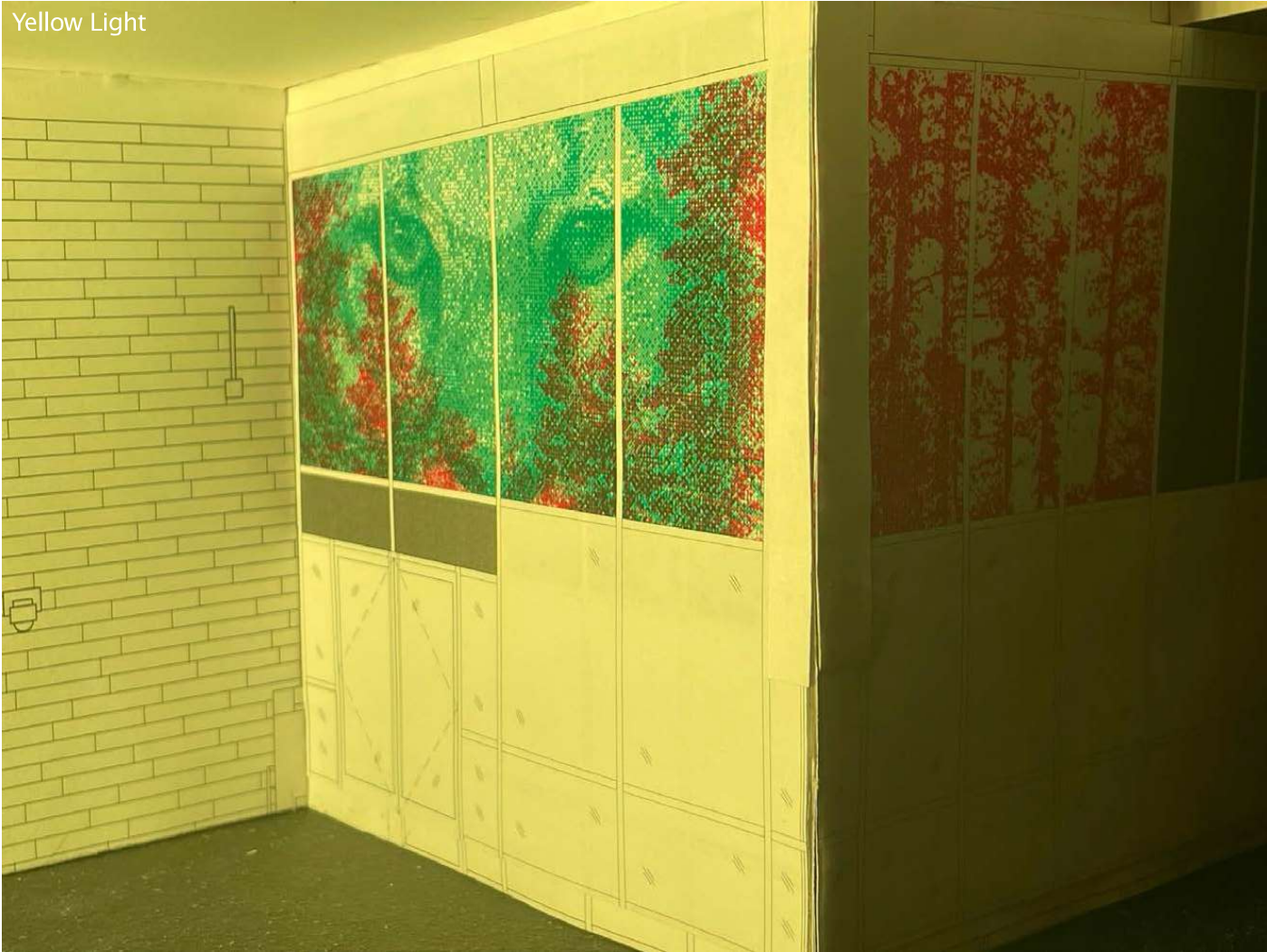
Flagstaff DCC – Art Glass – Haddad|Drugan – 12/21/2022

Green Light



Flagstaff DCC – Art Glass – Haddad|Drugan – 12/21/2022

Yellow Light



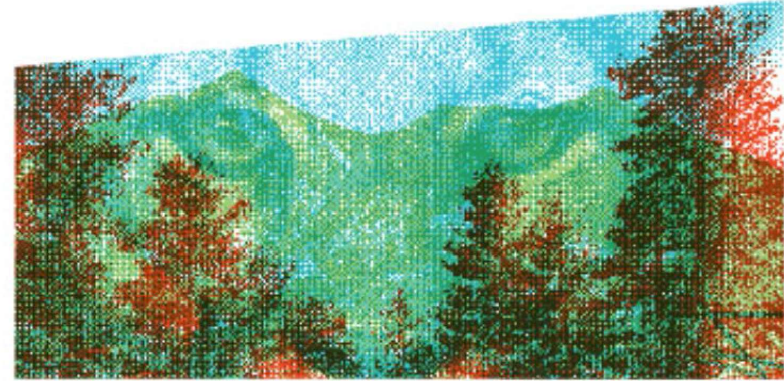
Flagstaff DCC - Art Glass - Haddad|Drugan - 12/21/2022

Red Light



Flagstaff DCC – Art Glass – Haddad|Drugan – 12/21/2022

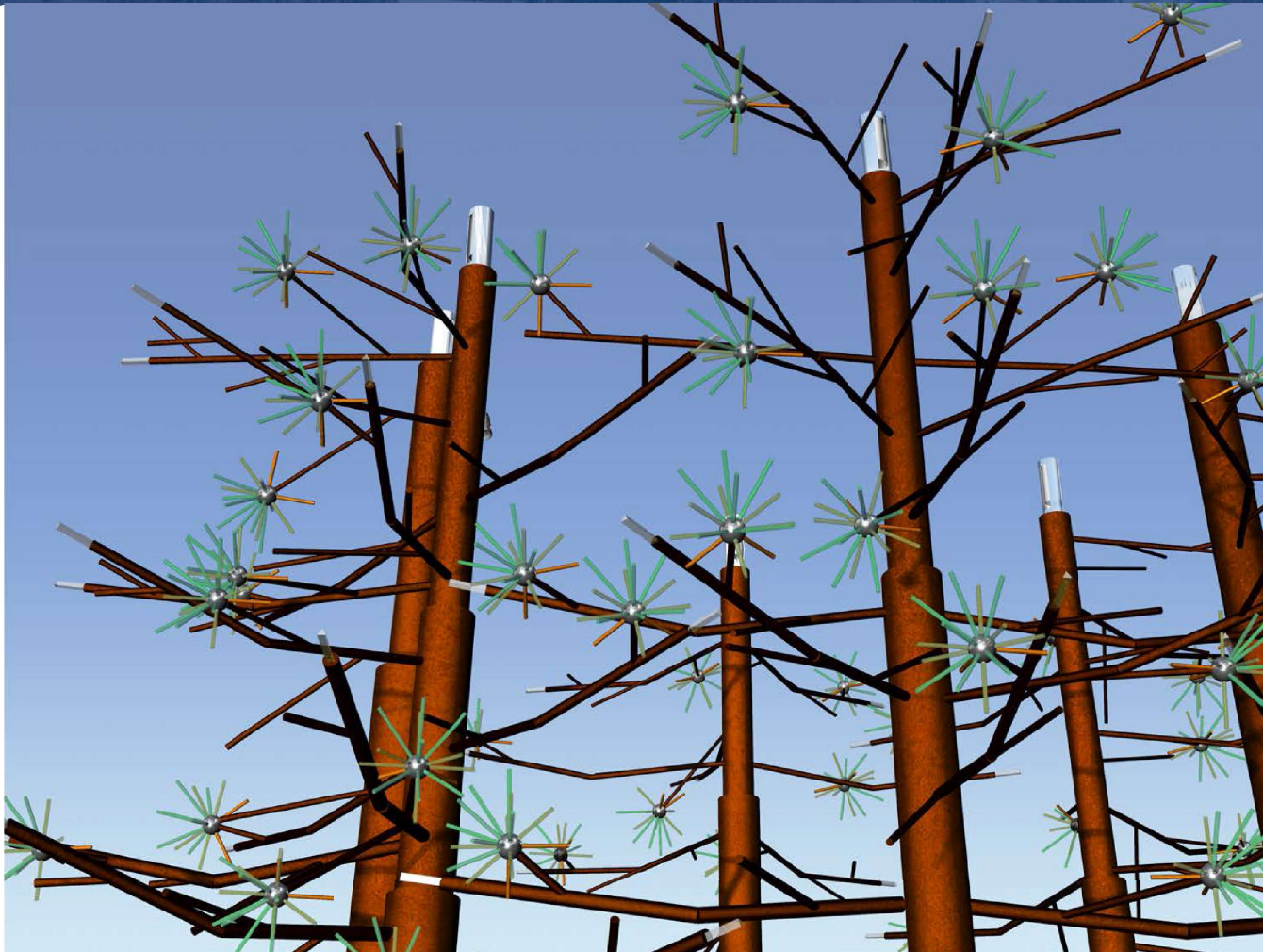
# Questions and Comments



**TEAM FLAGSTAFF**  
WE MAKE THE  
CITY BETTER



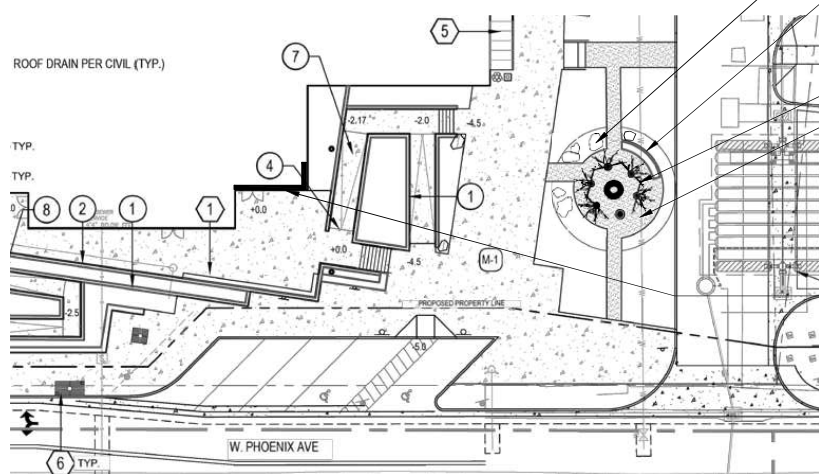
# Southside Grove Sculpture





NOTE  
SCULPTURE WILL BE LOCATED IN DCC PHASE ONE PROJECT  
AT APPROXIMATE LOCATION SHOWN. SCULPTURE WILL BE  
MOVED TO DCC PHASE 2 LOCATION AT CIVIC SPACE AT A  
LATER DATE

**1 ART LOCATION PLAN**  
SCALE 1" = 100'-0"



BOULDERS (TYP.)

BENCH  
ROUGH & READY CURVED BENCH, WOOD SEAT TOP/CORTEN STEEL  
BASE BY STREETLIFE ([HTTPS://WWW.STREETLIFE.NL](https://www.streetlife.nl)), OR  
APPROVED EQUAL; OR DARK GRAY CONCRETE SEATWALL W/ LIGHT  
SANDBLAST AND HARDWOOD TOP

SOUTH-SIDE GROVE SCULPTURE

STABILIZED 1/2" MINUS  
DECOMPOSED GRANITE  
PAVING, COLOR APACHE  
BROWN

INSULATED ART GLASS UNITS, TO BE PROVIDED BY  
HADDAD/DRUGAN TO OWNER, FOR INSTALLATION BY GC.  
ILLUMINATED FROM BEHIND BY RGB SPOTLIGHTS TO BE SPECIFIED  
BY HADDAD/DRUGAN AND PROCURED AND INSTALLED BY GC



**2 PHASE 1 PLAN**  
SCALE 1" = 30'-0"

HADDAD  
DRUGAN  
315 28TH AVENUE S.  
SEATTLE, WA 98144 USA  
TEL: 206-451-9333  
WWW.HADDAD-DRUGAN.COM

**SOUTHSIDE GROVE**  
FLAGSTAFF, AZ

**ART-0.1**  
ART LOCATION PLANS

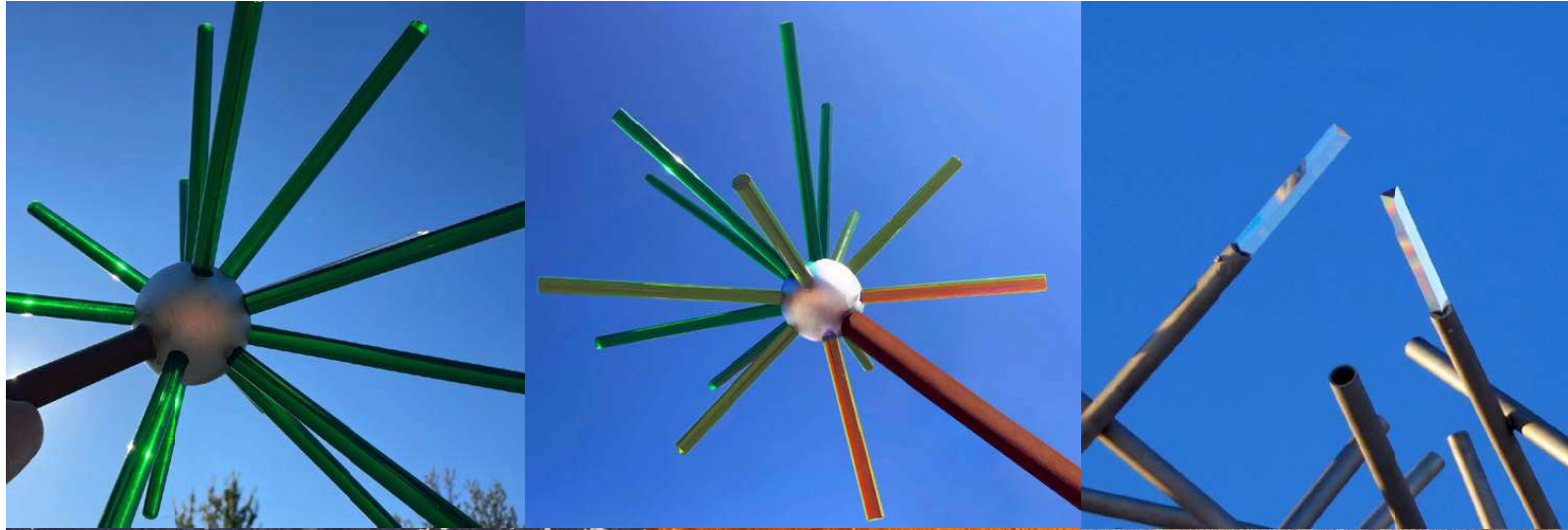
DECEMBER 16, 2022



**TEAM FLAGSTAFF**  
WE MAKE THE  
CITY BETTER

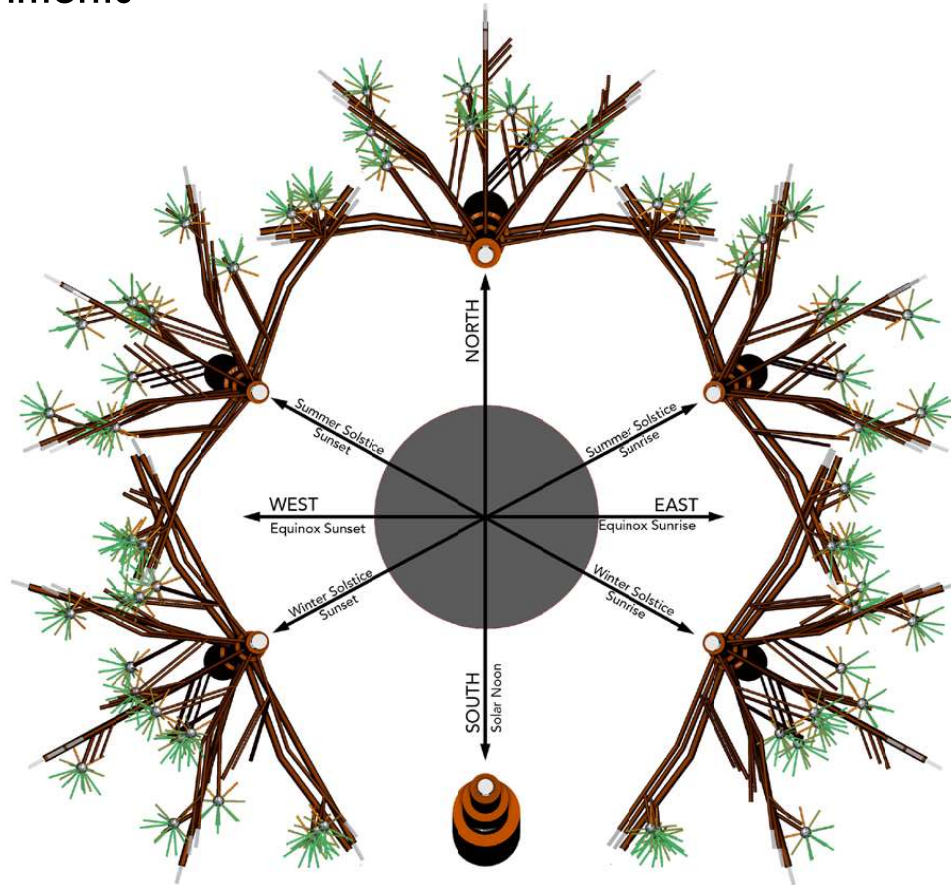
- Six ponderosa pine and telescope inspired “trunks” made from weathered steel, positioned in a circle to form a grove and to reflect the strong circle of community that is the Southside
- Trunks are angled toward center 2.5° to enhance sense of enclosure and are approximately 20 feet high





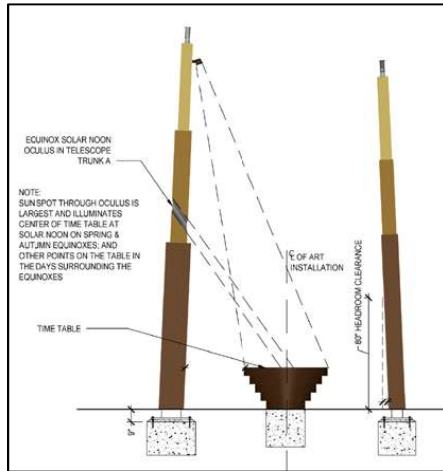
Sculpture Materials

# Sculpture Forms & Alignments



Plan View of Trunks and Branches with Solar Alignments

## South Telescope Trunk — Equinox Sun Portal



A stainless tube diagonally piercing the South Trunk aligns with the sun's position in the sky at noon on the Spring and Autumn Equinoxes.

On Equinox days, sun casting through this tube will form an ellipse of light in the middle of the central table.



# Telescope Trunk — Spotlight







## Time-Table History Excerpt Sample:

**1899\_ Northern Arizona Normal School, later renamed Northern Arizona University, founded** (university started with a total of twenty-three students and two instructors)

**1900s\_ City of Flagstaff redirects the Rio de Flag through the Southside neighborhood**

**1901\_ Mrs. Cleo Wilson Murdoch born April 9<sup>th</sup>**

**1901\_ Northern Arizona Normal School graduates four women** (It's first graduating class of four women received their teaching credentials.)

**1903 \_ Rio de Flag Floods** (major flood)

**1909\_ Legal segregation begins in Flagstaff** (Students of color are taught in separate classrooms at Emerson School.)

**1912\_ Arizona gains statehood** (February 14<sup>th</sup>)

**1915\_ Flagstaff Public Library was founded by the Women's Club**

**1916 The Wong family becomes Flagstaff's first permanent Chinese settlers.** (The Wong's immigrate and move to the Southside, becoming Flagstaff's first permanent Chinese settlers and operating American Laundry on Phoenix Avenue for many years)

**1917\_ Wilson Riles born June 27<sup>th</sup>** (Riles was one of the most distinguished Northern Arizona University graduates of his time. He became a prominent figure in the southside community and became a teacher and the principal of the Dunbar School in the late 40s.)

**1919 Grand Canyon National Park Established**

**1920s\_ Many African Americans Migrated from the South to Flagstaff to earn a living at the lumber mills.**

**1923\_ Katherine 'Mother Hickman' Born** (Born in Forest Hill, La. Hickman was an educator and activist dedicated to the church and community in Southside.)

**1925\_ Work began on Our Lady of Guadalupe Church –**

**1926\_ Route 66 Established** (Over 2,400 miles of road running from Chicago to Santa Monica and through Flagstaff, was established.)

**1926\_ Our Lady of Guadalupe Church First Mass** (On December 12<sup>th</sup>, the Feast of Guadalupe – which is how the name was chosen, the first mass was held. The project ran into multiple financial issues, causing the construction process to take a long time. The future parishioners rallied around the project and leveraged their collective time, money, and resources to see the project to completion. With time OLG would be frequented by Flagstaff's Black Catholic community as well.)

**1926\_ Tourist Home, a Basque boarding house built** (Isabelle Garcia and her son Jesus built the Tourist Home to serve as a boarding house for their Basque community.)

**1927\_ Dunbar School, Flagstaff's first African American school Opens** (Flagstaff's first formal segregated school (grades 1-8), the Dunbar School opened in 1927 and operated until 1952 when Flagstaff schools became desegregated. Named for Paul Lawrence Dunbar, a famed Black poet, essayist, and playwright. Born to an escaped slave and went on to publish a

Perimeter "bark" texture will be hand carved:



Treelines and text will be sandblasted:



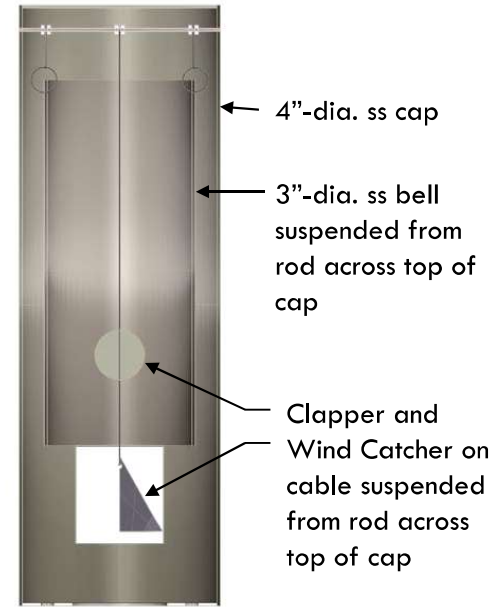
# Bells



Bells are incorporated into caps of all 6 trunks?  
Or maybe just the South Trunk



**Exterior View**  
3"-diameter bell  
housed inside a  
4"-diameter cap  
with vertical slot for  
wind flow



**Sectional View**



**Mock-up**

## Bell Mock-up

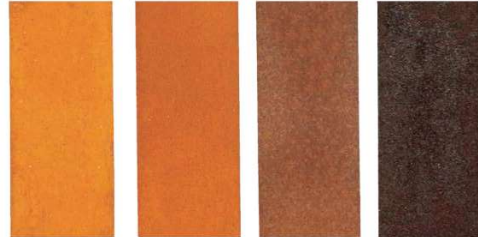


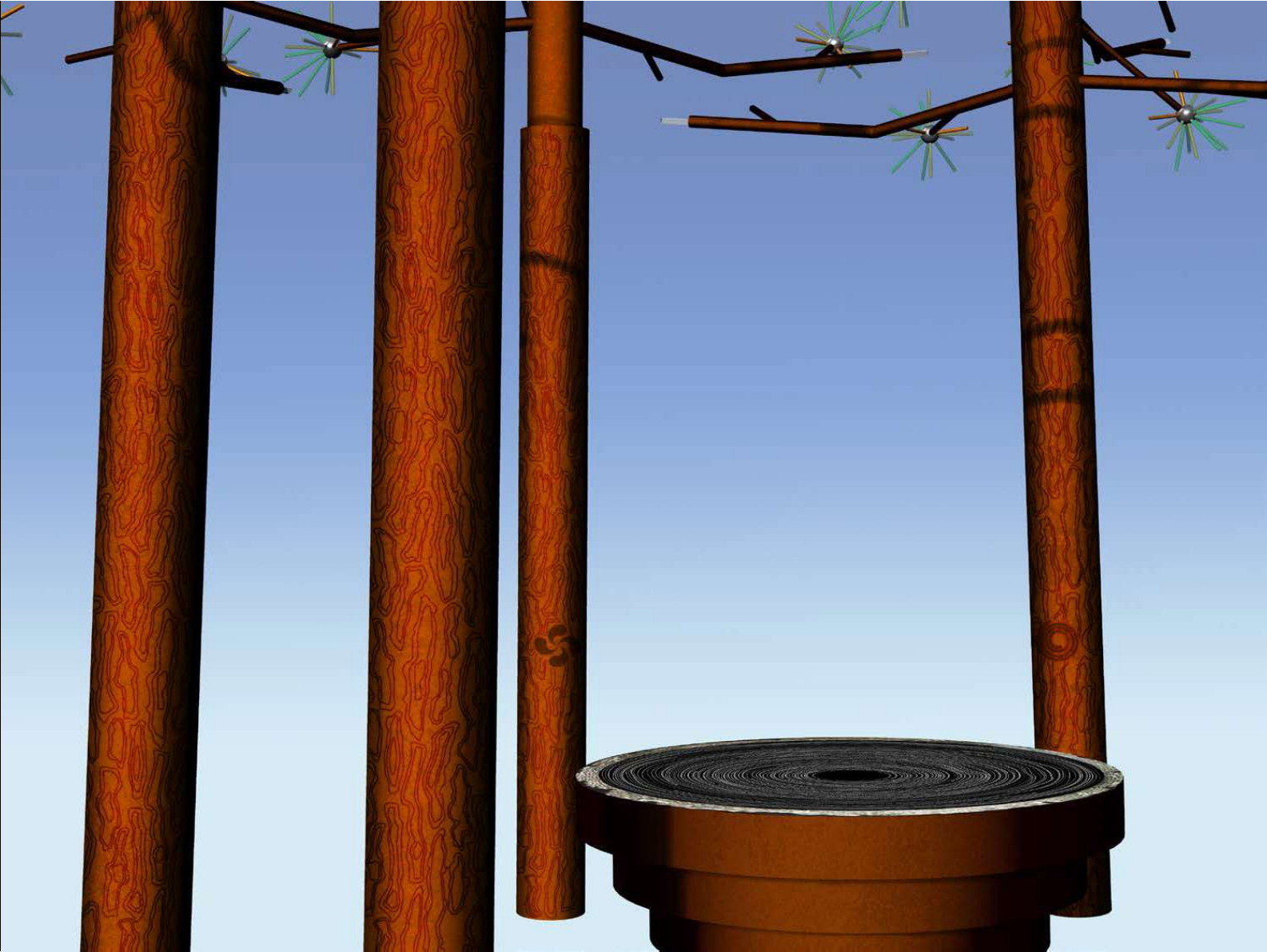
# Bark Texture

Mock-up of etched bark lines on weathering steel sample, with rust forming at etched lines

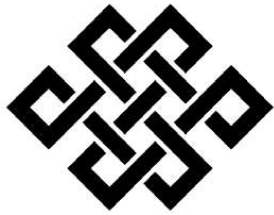


*Corten Steel Aging/Patina Process:*





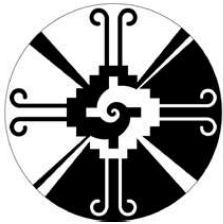
# Community Symbols



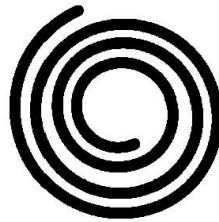
Endless Knot (Asian)



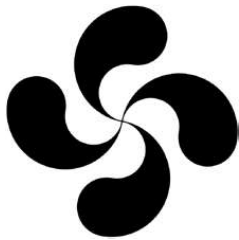
Nkonsonkonson (West African)



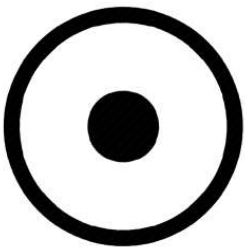
Hunab Ku Symbol (Latinx/Hispanic)



Spiral (Indigenous)



Lauburu (Basque)



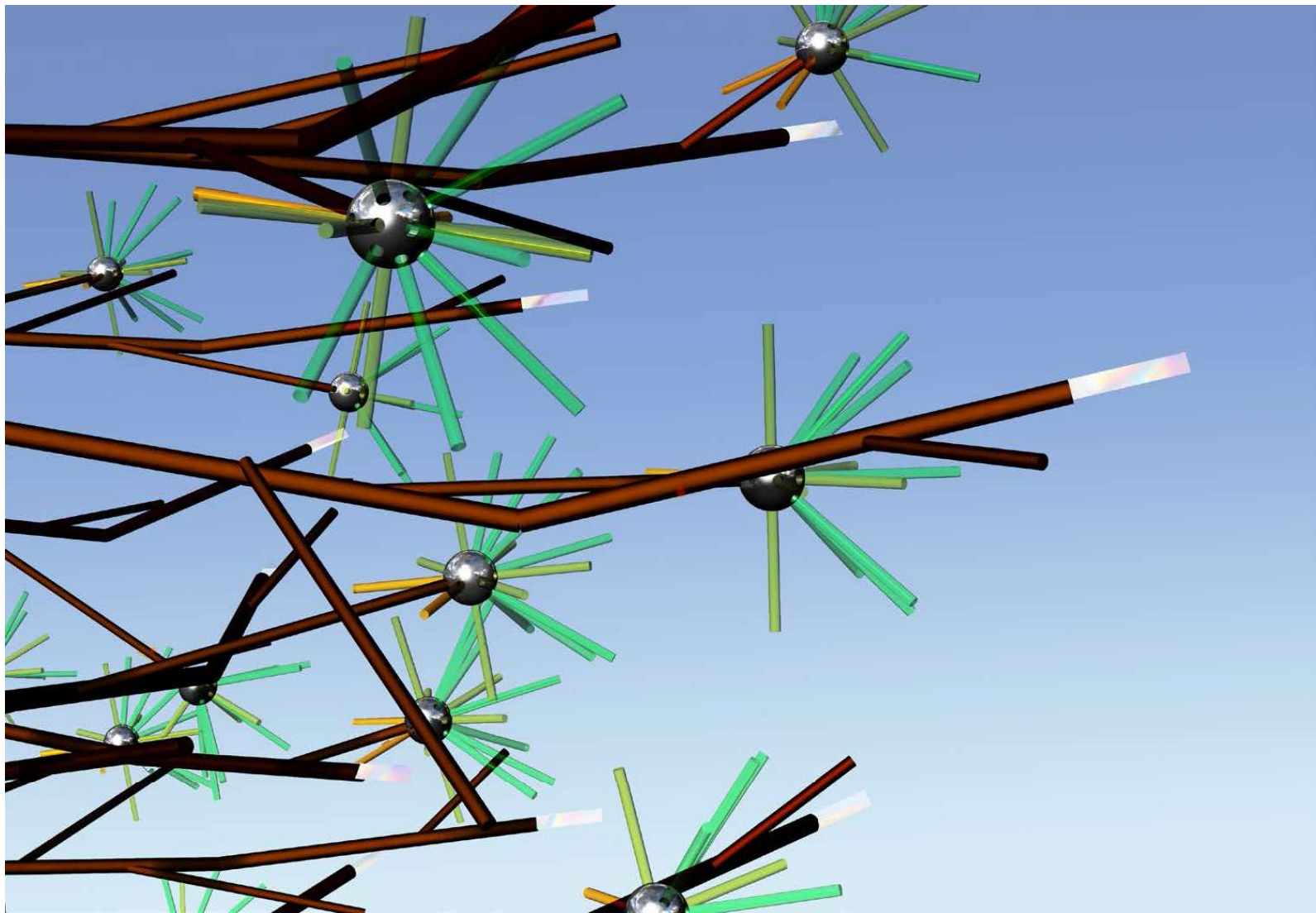
Sun (Astronomical)



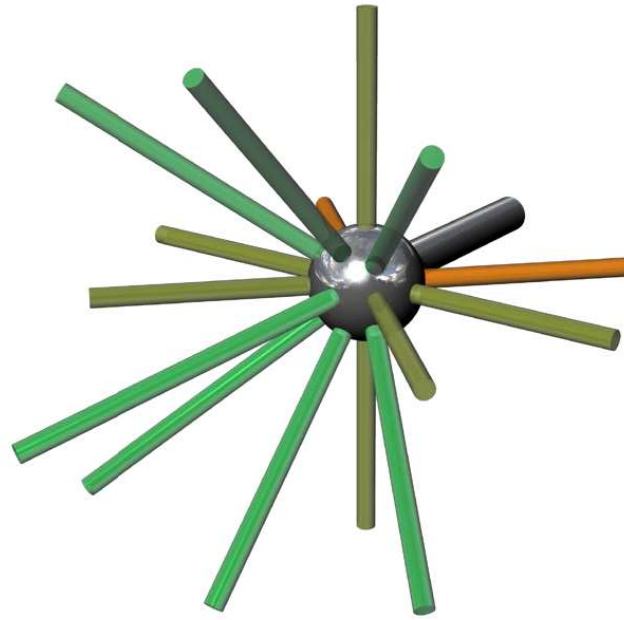
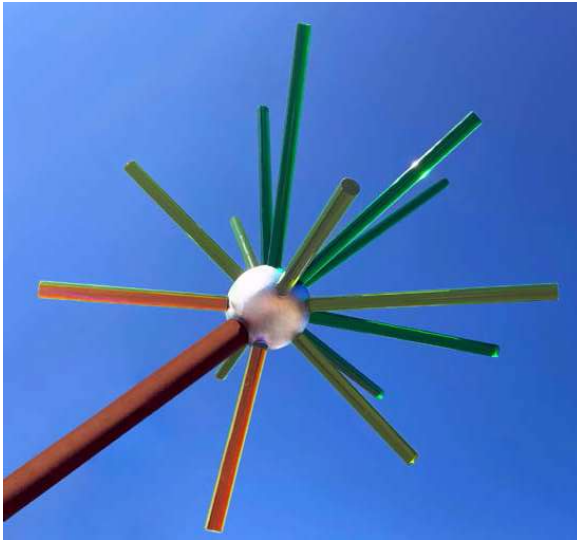
Symbol to be engraved in cladding



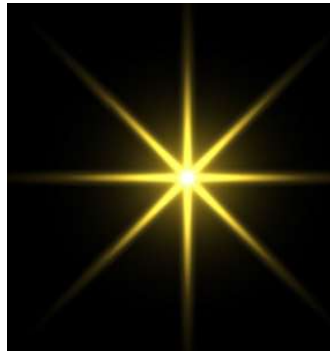
## Needle Clusters & Prisms



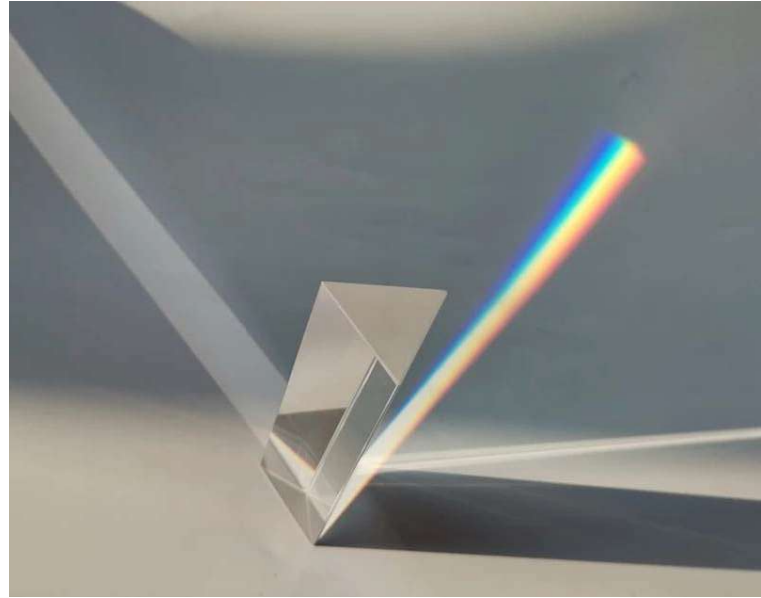
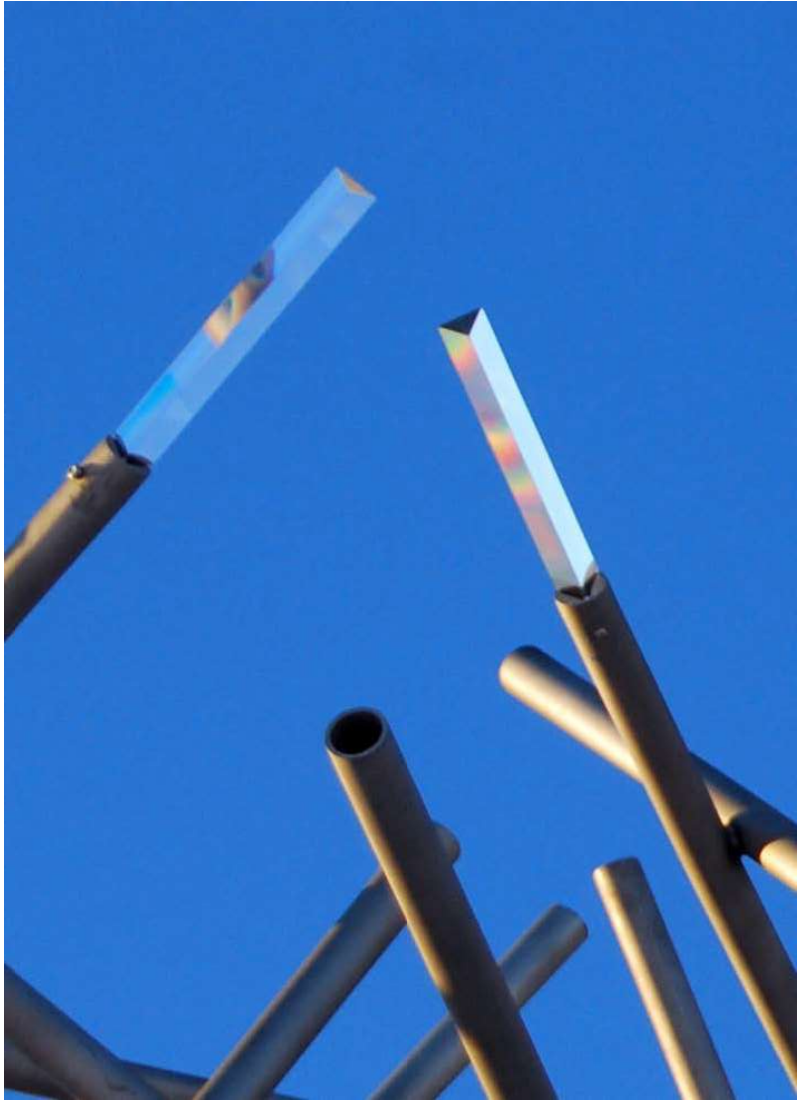
## Needle Clusters



- Cast colored polycarbonate rods with mirror-finish spheres
- Inspired by pine needle and star formations



# Prisms



## Southside Grove – Summary of Features

- Six ponderosa pine and telescope inspired “trunks” made from weathered steel, positioned in a circle to form a grove and to reflect the strong circle of community that is the Southside
- Trunks are angled toward center 2.5° to enhance sense of enclosure and are approximately 20 feet high
- All of the trunks have different cultural symbols etched into each representing important cultures that have come together as community in Flagstaff;
- Five of the trunks are etched with a bark texture and have “branches” that terminate in prisms to soften the ends cast iridescent effects with star clusters of luminous green needles that glow in the sunlight;
- Branches vary in length, are smaller in diameter, and are staggered and twisted on tree trunks, to elicit a organic feel
- The grove is aligned to mark the Spring and Autumn Equinoxes at sunrise and sunset and the largest trunk positioned South more strongly references a telescope and works as a sun portal casting a beam of light at noon on the summer solstice onto a “Time-Table” located at the center of the grove
- The top of the south trunk also includes a wind activated bell-like feature that creates a chime-like sound when windy
- In the center of the grove, a circular granite “Time-Table” is etched with tree rings that contain significant natural and cultural events in astronomy, of Indigenous peoples, of the region, and of the Southside.



# Questions and Comments



**TEAM FLAGSTAFF**  
WE MAKE THE CITY BETTER

