



Open Space Invasive Plant Grant Consideration



Robert Wallace, Open Space Supervisor



Open Space Background – Who, What, How

Who are we?

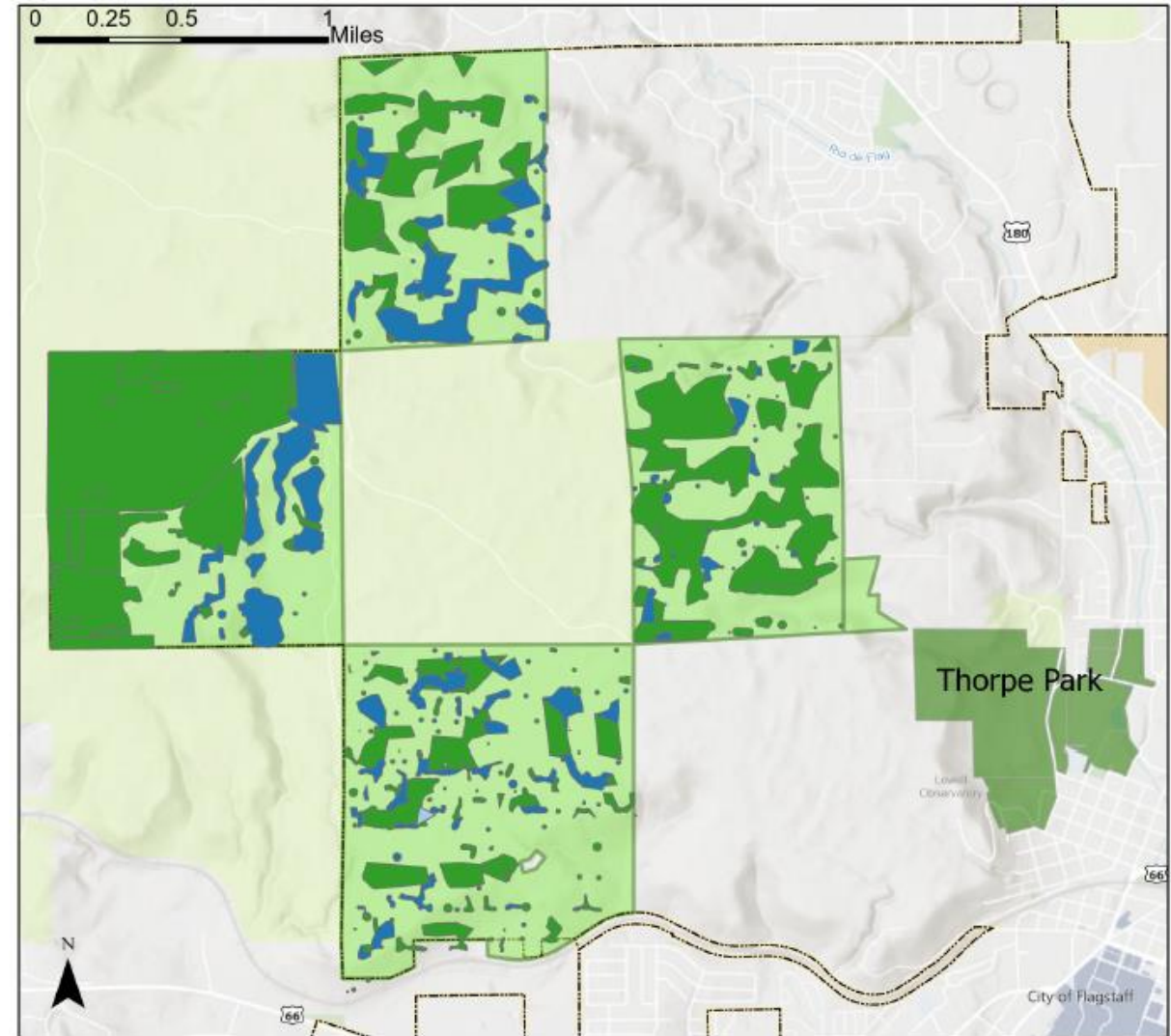
- Two full-time employees
- One full-time temporary grant-funded position

What does Open Space maintain

- Manage 3,000 acres of community accessible Open Space
- Invasive Weeds are problematic

How are we moving forward

- Invasive Plant Grant application to support treatment and restoration, total project cost \$108,260





What Will This Grant Achieve

- Invasive Plant Grant – *STATE Funding*
 - Contribute \$108,260 toward managing weeds and restoring for the Observatory Mesa area, for two years
- Complete Objectives:
 - Focus on two adjoining locations Observatory Mesa (2,200 acres) and Thorpe Park (172.9 acres).
 - Invasive plant prevention and control, 74 acres for two years
 - Revegetation of 31 acres
 - Partner opportunities
 - Recruitment of volunteers for monitoring & weeding
 - Community education





What is the City agreeing to?

- A completed grant agreement
- \$11,260 match, Open Space base budget allocation of \$2,500 (in-kind cash match), and a volunteer time in-kind match of \$8,760. Total project cost \$108,260.
- Detailed status quarterly reporting
 - Required to submit “deliverables”
 - Documentation of treatments and seeding
 - Partner meeting
 - Two community Invasive Weed Workshops
 - Project sustainability (weed management and partnerships).





How Grant Acceptance Meets City Goals

Maintains Service Level

- **Section goals:**
 - Maintain, restore, and enhance the natural ecosystem
 - Protect diverse and healthy wildlife populations.
 - Maintain and develop partnerships
 - Community education
 - Secure funding through grants
- **Community goals:**
 - Supports all 7 PBB Priorities
 - Climate Neutrality Plan
 - Priority one: Neighborhoods - Inclusive Recreation
 - Priority four: Commitments - Healthy Forests and Open Spaces





Options

Option A – Approve the agreement with the Department of Forestry and Fire Management, in the amount of \$97,000, with a city match of \$11,260 to support the management of the Observatory Mesa Natural Area.

Option B – Do not approve, thus declining grant funds in the amount of \$97,000.



Questions?

