



**DuraPack® 5000**  
High-Compaction Rear Loader



\*\*Bayne Cart Tippers sold separately\*\*

**Standard Equipment Features included in Base Price**

• 3.94 yd3 hopper	• Right side buzzer controls
• Smooth body side construction	• Right side packer controls
• Extra-duty 80,000 psi body	• Backup alarm
• Bolt-on ANSI compliant rear riding steps	• Backup and license plate light
• Tailgate service props	• LED Center-mounted brake light
• Remote mount cast iron roller bearing gear pump (less PTO)	• LED Duplicate high and low mount stop, turn, and tail lights
• Chrome-plated cylinder rods	• LED Mid-body turn signals
• Chrome-plated ejector cylinder sleeves	• LED FMVSS #108 clearance lights and reflectors
• Underbody mounted oil tank	• ICC reflective tape
• Level/temperature/sight gauge for hydraulic oil tank	• Rear camera bracket and flood lights - reverse activated
• Oil suction shut-off valve	• Body undercoating
• 3-micron return line filter with magnetic trap and in-cab filter bypass monitor	• Customer's choice of one color finish paint from Color Smart brochure
• 100-micron suction line strainer	• Standard 1-year (2,000 hours of operation) warranty
• Regenerative valve for fast packer and reload times	• ANSI Z 245.1-2017 compliant
• Neutral safety switch for automatic transmissions only	• Cavity coat and joint sealer
• Abrasion resistant hydraulic hoses	• 5 lb. In-cab Fire Extinguisher
• Body side access door with step and grab handle	• Safety Triangle
• Safety Triangle	• Corrosion resistant hydraulic tubes that conform to ASTM B117
• Programmable Controller mounted in cab, on body and in tailgate with InSight™	



Quote

Quote #: Flagstaff DP5000 REL 223227  
 Sales Person: Michael Neubauer  
 Cell #: 480 670 7830  
 Email: [mneubauer@balar.com](mailto:mneubauer@balar.com)

Customer: City of Flagstaff  
 Prepared for: Zack Haws  
 Phone: 928 213 2136  
 Email: [zhaws@flagstaffaz.gov](mailto:zhaws@flagstaffaz.gov)

Quantity	Description	Unit Price	Extended Price
1	Heil DP5000 REL Body, 25 cubic yard mounted on a Kenworth T880 chassis <b>Factory Installed Options</b> -Factory mounted -Clutch Shift PTO w/ Direct Mount Vane Pump -Dual Hopper Work Light Kit -Body Side Backing Assist Lights -Multi-Function LED Strobe / Turn Lamps -Left Hand Buzzer Kit -Dual Cart Tipper Control Valve, Handle, Plumbing and Hose Kit -3rd Eye® Single Camera System with 7" monitor and Single Camera Mounted on Tailgate -DP 5000 H.D. Contractors Package (includes 1/4" hopper floor, 3/16" hopper front face liner and tailgate spill troughs) -20 lb. Fire Extinguisher with Bracket -Dual Broom and Shovel Racks -Mud Flaps -Side Door Interlock Kit - shuts down pump when open -Body Front Head Splash Guard (Extends the front head an extra 11.5") -Fender Extension Kit -5 Gallon Cooler and Bracket - frame mounted	\$ 297,798.40	\$ 297,798.40
1	Estimated Freight	\$ 6,500.00	\$ 6,500.00
Per Sourcwell Contract#: 091219-THC		Sales Tax:	\$ 24,752.16
City of Flagstaff ID#: 32200		12% FET:	exempt
		Total:	\$ 329,050.56

Authorized By: \_\_\_\_\_  
 Date: \_\_\_\_\_  
 P.O. Number: \_\_\_\_\_

\*This quote is good for 15 days. This quote may not include sales tax. This quote may not include Federal Excise Tax. Freight charges are subject to change. This quote is subject to terms included in package. By accepting this quote you are accepting its terms

THANK YOU

---



WE NEVER STOP WORKING FOR YOU

# DuraPack<sup>®</sup> 5000

High-Compaction Rear Loader

a DOVER company



Environmental  
Solutions Group<sup>®</sup>

a DOVER company

The unrivaled workhorse of the waste industry.

[www.Heil.com](http://www.Heil.com)

# DuraPack<sup>®</sup> 5000

The unrivaled workhorse of the industry.

With nearly 30 years of reliability and over 20,000 units built, the Heil<sup>®</sup> DuraPack 5000 high-compaction refuse vehicle has become the mainstay of collection fleets, from small independent haulers to the world's largest municipal fleet.

**Built to last.** The DuraPack 5000 features the Heil DuraPack body, which includes a fully welded, interlaced subframe. With formed channels for extra strength, high tensile strength steel to maximize performance at a minimum weight, and superior resistance to corrosion and cracking, the DuraPack 5000 is a sturdy package with the stamina to absorb years of tough hauling.

**Outstanding weight distribution.** Incorporating a high cylinder mount into a compact design with a short overhang creates outstanding weight distribution and reduced wear on rearward chassis components. This maximizes forward loading of both the body and the payload.

**In-Sight<sup>™</sup> Display.** Now, the Heil In-Sight Display provides enhanced troubleshooting capabilities that can all be performed from within the safety of the cab. This is made possible by the recently upgraded remote mobile controller, which eliminates the need for a PDC box. The mobile controller provides two-way communications, and critical information directly to the display, eliminating relays and associated failures. All in-cab switches are conveniently located within the Heil In-Sight Display. This enhanced design allows for future additions, which in the past would have required the addition of an inconveniently placed auxiliary switch, on an already crowded dash. Now all this can be done in one, easy to access, in-cab display.

The DuraPack 5000 and all Heil products are Connected Collections<sup>™</sup> ready. This is part of our vision focused on helping fleet owners make better decisions, faster. Contact your local Heil dealer for more information, or visit [www.heil.com/connected-collections](http://www.heil.com/connected-collections).



## The Heil<sup>®</sup> DuraPack<sup>®</sup> 5000 Design, performance and reliability that works for YOU.



### Add 3rd Eye<sup>®</sup> Digital Packages

Connect for service verification, body/chassis data, fuel tax reporting, and route management. Includes factory installed 3rd Eye Mobile, with the ability to connect up to eight cameras.



### Add 3rd Eye<sup>®</sup> Collision Avoidance Radar

3rd Eye family of Integrated Collision Avoidance Radar Systems protect both your drivers, your assets, and those in close proximity to your vehicle, using existing 3rd Eye Mobile camera cables.



### Add Roof Or Front Of Body CNG System

This system enables your CNG refuse fleet to deliver the same productivity you would expect from a diesel unit, while saving money with clean, domestic, compressed natural gas as fuel.



### Add Bayne Thinline<sup>®</sup> Premium Cart Tipper

Outfit your truck with a single or dual Bayne Thinline<sup>®</sup> premium mobile lifters and reduce the stress and strain on personnel who manually load the vehicle, and increase route efficiency.

# Smarter By Design, With Loyalty Built In

The DuraPack® 5000 was specifically designed to maximize your efficiency on daily collection routes.

## DuraPack® 5000



## Reliable Rear Loader Performance

### + IN-SIGHT™ DISPLAY

The In-Sight display allows for enhanced troubleshooting from the safety of the cab. This refresh also moved all in-cab switches to the In-Sight Display, allowing for constant modification.



### + TIME SAVER

The DuraPack 5000 features a flat, abrasion-resistant steel floor, which eliminates the messy job of cleaning trash buildup out of dirty troughs.

### + SUPERIOR FILTRATION

Our three-micron filtration system keeps oil cleaner, and extends the life of hydraulic components. Other manufacturers use 10-micron filtration, which can allow particulate matter to damage the hydraulic system.

### + ONE-HANDED MANUAL PACKING

Convenient one-handed manual controls stop, start, or reverse the upper panel or sweep panel at any point in the packing cycle.

### + COMMERCIAL CAPABILITIES

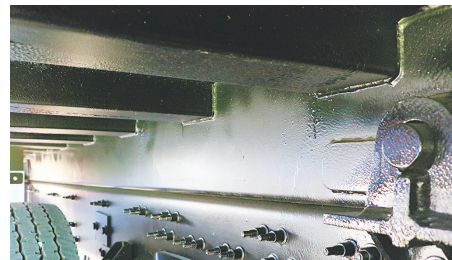
With one of the optional Commercial packages, the DuraPack 5000 can easily handle commercial containers. Packages can include a reeving system, winch, or roll bar coupled with a lip and latch kit.

## Discover What Sets The DuraPack® Apart



### HIGH CAPACITY HOPPER

The generous 3.94-cubic-yard hopper can accommodate large items with ease, and requires less cycling on the route.



### DURABILITY AND LONGEVITY

Our exclusive, fully welded, interlaced subframe provides exceptional longevity, while resisting abrasion, corrosion, and salt damage. The body is constructed of 7-8 ga. high tensile strength steel, while the hopper features 1/4" thick AR400 steel on the floor, and 3/16" thick AR400 steel on the sides for superior strength and durability.



### MORE PACKING POWER

The Heil® Linkage Packing System is a proven performer. It has no rollers, slides, or slide shoes to wear out. Smaller cylinders deliver considerably more packing power for increased payloads.



### SERVICE SMART SIDE DOOR

Our Service Smart design simplifies routine maintenance, keeping your truck away from the shop, and out servicing your customers, making money. The side door provides easy access for common maintenance tasks.

# DuraPack® 5000 Specifications



## Performance Specifications

<b>Compaction</b>	1,000 + lbs. per yd <sup>3</sup>
<b>Hopper Size</b>	3.94 yd <sup>3</sup>
<b>Packing Cycle Time</b>	16 -18 seconds*
<b>Reload Time</b>	6 - 8 seconds*
<b>FET Exempt</b>	18 yd <sup>3</sup> and 20 yd <sup>3</sup>
* with fast cycle pump option	

All designs, specifications, and components are subject to change at the manufacturer's sole discretion at any time without notice. Data published herein is for information purposes only and shall not be construed to warrant suitability of the unit for any particular purpose, as performance may vary with the conditions encountered. The only warranty is our standard written Warranty Statement for this product at the time of shipment. \*Heil does not provide tax advice. Please consult your tax advisor regarding the specific tax implications of your selected product.

## Hydraulic Specifications

<b>PUMP</b>	
<b>Type</b>	High pressure gear
<b>Maximum Operating Pressure</b>	2,500 psi
<b>GPM</b>	42 GPM
<b>OIL RESERVOIR</b>	
<b>Tank Capacity (net)</b>	50 gallons (190 liters)
<b>Filters</b>	3-micron return filter with in-cab filter monitor; 140-micron suction line
<b>VALVES</b>	
<b>Shutoff</b>	Ball valve in suction line between pump and reservoir
<b>Packing Control</b>	Spool type
<b>Ejector and Tailgate Raise</b>	Spool type

## Tailgate Specifications

<b>Hopper Capacity</b>	yd <sup>3</sup>	3.94
	m <sup>3</sup>	3.01
<b>Sill Height Below Chassis Frame</b>	in.	3.8
	mm	97
<b>Hopper Loading Width</b>	in.	80
	mm	2,032
<b>Hopper Opening Height</b>	in.	55
	mm	1397
<b>Cycle Time (seconds)</b>	complete	16 - 18*
	reload	6 - 8*
* with fast cycle pump option		

Typical Chassis Configuration			18 yd <sup>3</sup>	20 yd <sup>3</sup>	25 yd <sup>3</sup>	27 yd <sup>3</sup>	32 yd <sup>3</sup>
<b>Minimum GVWR <sup>(1)</sup></b>			48,000	51,000	54,000	57,000	62,000
<b>Minimum GAWR</b>	Conventional	front	12,000	13,000	14,000	15,000	16,000
		rear	36,000	38,000	40,000	42,000	44,000
	Cab-Over Engine	front	14,000	15,000	16,000	17,000	18,000
		rear	34,000	36,000	38,000	40,000	44,000
<b>Usable CA</b>	in.	127 ± 3	N/A	N/A	N/A	N/A	
	mm	3,149 - 3,302	N/A	N/A	N/A	N/A	
<b>Usable CT</b>	in.	108 ± 3	118 ± 3	153 ± 3	165 ± 3	193 ± 3	
	mm	2,667 - 2,819	2,921 - 3,073	3,810 - 3,962	4,115 - 4,267	4,826 - 4,978	
<b>C.O.E. Wheelbase</b>	in.	152 ± 3 (Single Axle) 133 ± 3 (Tandem Axle)	143 ± 3	178 ± 3	190 ± 3	218 ± 3	
	mm	3,785 - 3,937 (Single Axle) 3,302 - 3,454 (Tandem Axle)	3,556 - 3,708	4,445 - 4,597	4,750 - 4,902	5,461 - 5,613	
<b>Conventional Cab Wheelbase</b>	in.	192 ± 3 (Single Axle) 173 ± 3 (Tandem Axle)	183 ± 3	218 ± 3	230 ± 3	258 ± 3	
	mm	4,801 - 4,953 (Single Axle) 4,318 - 4,470 (Tandem Axle)	4,572 - 4,724	5,461 - 5,613	5,766 - 5,918	6,477 - 6,629	
<b>Minimum Platform</b>	in.	159 ± 3	169 ± 3	204 ± 3	216 ± 3	244 ± 3	
	mm	3,962 - 4,115	4,216 - 4,369	5,105 - 5,258	5,410 - 5,563	6,121 - 6,274	

Heil Environmental does not recommend mounting any chassis that does not meet the minimum GVWR/GVARs outlined above.(1) If CA/CT is not as recommended, contact Heil Environmental for applicable weight distribution and GVWR/GVAR requirements.

Body Specifications		18 yd <sup>3</sup>	20 yd <sup>3</sup>	25 yd <sup>3</sup>	27 yd <sup>3</sup>	32 yd <sup>3</sup>
<b>Body Capacity</b>	yd <sup>3</sup>	18	20	25	27	32
	m <sup>3</sup>	13.7	15.3	19.1	20.6	24.4
<b>Overall Length</b>	in.	225	235	270	282	310
	mm	5,715	5,969	6,858	7,163	7,874
<b>Overall Length With Tailgate Raised</b>	in.	275	285	320	332	360
	mm	6,985	7,239	8,128	8,433	9,144
<b>Overall Width</b>	in.	96				
	mm	2,438				
<b>Overall Height Above Frame</b>	in.	96				
	mm	2,438				
<b>Overall Height With Tailgate Raised</b>	in.	207				
	mm	5,257				
<b>Gross Weight (approximate)</b>	lbs.	14,300	14,800	15,500	15,900	17,200
	kg	6,487	6,727	7,045	7,227	7,818

## Cylinder Specifications

Body Cylinders	Type	Model	Stages	Bore	
<b>Tailgate Raise</b>	Single Acting	ALL	1	in.	4
				mm	102
<b>Packer Sweep</b>	3-Stage Double Acting Telescopic	ALL	4	in.	5.5
				mm	140
<b>Upper Panel</b>	Double Acting	ALL	1	in.	5
				mm	127
<b>Ejection</b>	Double Acting	18, 20, 25, 27 yd <sup>3</sup>	4	in.	6
				mm	152
		32 yd <sup>3</sup>	5	in.	7
				mm	178



## Vehicle Summary

	<b>Unit</b>		<b>Chassis</b>	
Model:	T880 Series Conventional	Fr Axle Load (lbs):		20000
Type:	FULL TRUCK	Rr Axle Load (lbs):		46000
Description 1:		G.C.W. (lbs):		66000
Description 2:	REAR PACKER SPEC			
	<b>Application</b>	Road Conditions:		
Intended Serv.:	Refuse packer: Vehicles which pick up	Class A (Highway)		2
Commodity:	Refuse/recycled material.	Class B (Hwy/Mtn)		97
		Class C (Off-Hwy)		1
		Class D (Off-Road)		0
Type:	<b>Body</b> Refuse loader/packer	Maximum Grade:		8
Length (ft):	22	Wheelbase (in):		224
Height (ft):	13	Overhang (in):		68
Max Laden Weight (lbs):	4000	Fr Axle to BOC (in):		68
		Cab to Axle (in):		156
		Cab to EOF (in):		224
No. of Trailer Axles:	0	Overall Comb. Length (in):		340.5
Type:				
Length (ft):	0			
Height (ft):	0	<b>Special Req.</b>		
Kingpin Inset (in):	0	U.S. Domestic registry, 50-state.		
Corner Radius (in):	0			
	<b>Restrictions</b>			
Length (ft):	75			
Width (in):	102			
Height (ft):	13.5			

Approved by: \_\_\_\_\_

Date: \_\_\_\_\_



Sales Code	Std/Opt	Description	\$ List	Weight
<b>Model</b>				
0000810	S	<b>T880 Series Conventional</b>		<b>15,549</b>
0070060	S	<b>T880</b>		<b>0</b>
0080075	O	<b>Dealer/Customer declines engine w/CARB Idle Emissions Reduction Feature.</b>		<b>0</b>
0090000	S	<b>Non-Sleeper w/rear axle capacity less than 59K.</b>		<b>0</b>
0098409	O	<b>State of Registry: Florida</b>		<b>0</b>
<b>Engine &amp; Equipment</b>				
0701105	O	<b>MX-11 400R 400@1600 1450@900</b> 2021 with Engine Brake, Available for Refuse N09020 AE001 NO....ENBL MX RETARDER IN NEUTRAL N08200 AE002 650...IDLE TARGET N09100 AA003 64...CC MAX TARGET SPD N09110 AA004 10...CC MIN ENABLE SPD N09120 AA005 OFF...DYNAMIC CC ENABLE N09440 AA061 2000..CAB:MAX ENG SPD-ACCEL CNTRL N09430 AA062 2000..CAB: MAX ENG SPD - SW CNTRL N09420 AA063 6.....CAB: MAX VEH SPD N09510 AA065 800...CAB: DEDICATED PRESET "-" N09520 AA066 900...CAB: DEDICATED PRESET "+" N09780 AA049 CNCL..CAB: CUSTOM PRESET 1 FUNC N09640 AA050 0.....CAB: CUSTOM PRESET 1 N09790 AA051 CNCL..CAB: CUSTOM PRESET 2 FUNC N09650 AA052 0.....CAB: CUSTOM PRESET 2 N09800 AA053 CNCL..CAB: CUSTOM PRESET 3 FUNC N09660 AA054 0.....CAB: CUSTOM PRESET 3 N09500 AA060 OFF...CAB: PRESET +/- SW TYPE N09630 AA067 TRQ...CAB:ACCEL PEDAL TYPE IN PTO N09400 AA068 YES...CAB:ACCEL ACTV IN CAB PTO N09470 AA055 ON....CAB: CLUTCH INTLK N09840 AA056 OFF...CAB: CUSTOMER INTLK N09480 AA057 ON....CAB: NEUTRAL INTLK N09460 AA058 ON....CAB: PARK BRK INTLK N09490 AA059 ON....CAB:SER BRK INTLK:NO PTO N09540 AA074 2000..REM:MAX ENG SPD-ACCEL CNTRL N09530 AA075 2000..REM:MAX ENGSPD-SW/TSC1 CTRL N09610 AA077 800...REM: DEDICATED PRESET "-" N09620 AA078 900...REM: DEDICATED PRESET "+" N09810 AA043 CNCL..CAB/REM:CUSTOM PRESET1 FUNC N09670 AA044 750...CAB/REM: CUSTOM PRESET 1 N09820 AA045 CNCL..CAB/REM:CUSTOM PRESET2 FUNC N09680 AA046 850...CAB/REM:CUSTOM PRESET 2 N09830 AA047 CNCL..CAB/REM:CUSTOM PRESET3 FUNC N09690 AA048 950...CAB/REM: CUSTOM PRESET 3 N09600 AA079 OFF...REM: PRESET +/- SW TYPE N09410 AA069 YES...PTO REM PEDAL ENABLE		<b>-288</b>



Sales Code	Std/Opt	Description	\$ List	Weight
		N09560 AA070 ON AD.REM: CLUTCH INTLK		
		N09700 AA071 OFF...REM: CUSTOMER INTLK		
		N09570 AA072 ON AD.REM: NEUTRAL INTLK		
		N09580 AA073 ON AD.REM:SER BRK INTLK:NO PTO		
		N09550 AA076 650...REM: MIN ENG SPD		
		N09450 AA064 650...CAB: MIN ENG SPD		
		N09760 AA009 5.....DRIVER REWARD VEH SPD BONUS		
		N09770 AA010 -5.....DRIVER REWARD VEH SPD PNLTY		
		N09750 AA013 NONE..OFFSET MODE		
		N09720 AA015 3.....MIN SPD FOR DR SHIFT AID		
		N09730 AA016 10....DSA LOWEST ACTV GEAR		
		N09740 AA017 1.....DSA HIGHEST ACTV GEAR		
		N09340 AA019 YES...EIST PARK BRK RESET ENABLE		
		N09300 AA022 30....EIST LO CLNT TEMP OVERRIDE		
		N09290 AA023 80....EIST HI AMBAIR TEMP OVRDRDE		
		N09280 AA024 39....EIST LO AMBAIR TEMP OVRDRDE		
		N09260 AA025 5.....EIST PTO MAX IDLE TIME		
		N09230 AA026 5.....EIST PARKED MAX IDLE TIME		
		N09220 AA027 5.....EIST STANDSTILL IDLE TIME		
		N09240 AA029 YES...EIST RESET FROM ENG LOAD		
		N09250 AA030 NO....EIST OVERRIDE FROM ENG LOAD		
		N09200 AA031 0.....EIST EXPIRATION DISTANCE		
		N09310 AA032 YES...EIST ACCEL PEDAL RESET		
		N09330 AA033 YES...EIST SERVICE BRK RESET		
		N09320 AA034 YES...EIST CLUTCH PEDAL RESET		
		N09270 AA035 YES...EIST PTO OVERRIDE		
		N08030 AA086 64....MAX ACCEL PEDAL VEH SPD		
		N08000 AA087 0.....VSL EXPIRATION DISTANCE		
		N08020 AA088 64....LRSL SPD LMT		
		N09350 AA042 1900..FAST IDLE CNTRL MAX ENG SPD		
		N09050 AA037 4.....DSL SPD OFFSET		
		N09040 AA038 2.....AUTO RTRDR VEH SPD OFFSET		
		N09030 AA039 0.....TIME DELAY FOR RTRDR ACT		
		N09130 AA006 MT....MULTI TORQUE IN CC		
		N09080 AQ001 4.....PCC Negative Offset		
		N09090 AQ002 4.....PCC Positive Offset		
		N09710 AA089 NO....REMOTE INPUTS IN CAB PTO		
		N08200 AE002 650...IDLE TARGET		
1000046	O	<b>EPA Emissions Warranty Engine</b>		<b>0</b>
1000151	S	<b>PremierSpec</b>		<b>0</b>
1000204	O	<b>Engine monitoring protection -Derate- PACCAR MX engine parameter.</b>		<b>0</b>
1000243	O	<b>Gearing Analysis: Performance</b> power before economy results.		<b>0</b>
1000256	O	<b>Customer's Typical Operating Spd: 64 MPH</b>		<b>0</b>
1000282	O	<b>MX Retarder State Cruise Control On Manual Mode</b> Selecting this code will program the engine controller to make manual mode available when cruise control is on, but not set, and the engine		<b>0</b>

Sales Code	Std/Opt	Description	\$ List	Weight
		brake switch is on. Manual mode means the engine retarder activates whenever the throttle pedal is not depressed. 2013+		
1000684	O	<b>Effective VSL Setting NA</b>		0
1000857	S	<b>Engine Idle Shutdown Timer Enabled</b>		0
1000891	O	<b>Eff EIST NA Expiration Miles</b> Use only with MX and Cummins engines		0
1006003	S	<b>Air Compressor: WABCO 25.9 CFM PACCAR MX</b> 2017+ 440cc Air Compressor		0
1051200	S	<b>Air Cleaner: composite firewall mounted PACCAR or</b> Cummins engines		0
1105210	S	<b>Fan hub: Horton 2-Speed for PACCAR MX</b>		0
1123555	S	<b>Cooling module: 1330 square inches.</b> Includes aluminum radiator core, aluminum charge air cooler, translucent surge tank and washer bottle, silicone hoses, and extended life coolant.		0
1160205	O	<b>Bugscreen</b> Front of grille on 2.1M MD, C500, T800, T880, and W900. Behind grille on T680 and 1.9M MD.		2
1247234	S	<b>EXH: 2021 RH Under DPF/SCR with RH SOC Vertical</b> tailpipe. Not 2.1m high roof sleepers		0
1290118	O	<b>Tailpipe: 5 in. Single 18 in. 45 degree curved.</b>		0
1321101	S	<b>Fuel Filter: PACCAR Extended Service Interval</b> On-Engine Fuel/Water Separator. 2021 Emissions MX Engines only.		0
1321205	S	<b>Run Aid:Fuel Heat</b> *For Fuel Filter		0
1321305	S	<b>Start Aid:12V Heat</b> *For Fuel Filter		0
1812164	O	<b>Alternator: SEG HDS 200 AMP Brushed</b>		0
1821210	S	<b>Batteries: 3 PACCAR GP31 threaded post (700-730)</b> 2100-2190 CCA dual purpose.		0
1836102	S	<b>PACCAR Premium 12V Starter with PACCAR MX Engines</b> PACCAR 12 volt electrical system. With centralized power distribution incorporating plug-in style relays. Circuit protection for serviceability, 12-volt light system w/circuit protection circuits number & color coded.		0
1840005	O	<b>Battery disconnect switches 2, mounted on</b> battery box.		2
1840065	S	<b>12V low voltage disconnect for starter battery</b> protection.		0
1901020	O	<b>Remote PTO/Throttle, 12-Pin, 500K, Back of Cab OR</b> Back of Sleeper, J1939, Remote Control Provision		0

## Transmission & Clutch



Sales Code	Std/Opt	Description	\$ List	Weight
2016158	O	<b>Transmission: Allison 4500RDS 6-speed</b> w/o retarder, w/PTO provision. 5th generation. For vocational applications. Includes shift control, transmission oil temperature gauge, oil level sensor & heat exchanger. Transynd transmission fluid is standard on all Allison 1000, 2000, 3000 & 4000 series transmissions.		478
2405405	O	<b>Driveline: 2 Dana 1810 heavy-duty 1 centerbearing</b> *Heavy duty is 1810HD series.		68
2410018	O	<b>Torque converter included w/Allison Transmission.</b>		0
2410151	O	<b>Pushbutton control center console mounted.</b> Class 8 with Allison Transmission.		0
2410204	O	<b>Allison Fuel Sense: Delete</b>		0
2410244	O	<b>J1939 Park Brake Auto Neutral</b>		0
2410310	O	<b>Allison Neutral at Stop</b>		0
2429378	O	<b>Customer installed transmission PTO in the LH</b> Mounted position (8 o'clock) for Allison 3000 & 4000 transmissions.		0
<b>Front Axle &amp; Equipment</b>				
2536002	S	<b>PACCAR FX-20 Front Axle rated at 20K 4" drop</b> standard track		0
2621078	O	<b>Front Brakes: 22K Bendix ES S-cam 16.5x6 in.</b>		-46
2690035	O	<b>Front Brake Drum: 22,000 lbs. 16-1/2x6 in. Cast.</b>		104
2701319	S	<b>Front Hubs Aluminum hub pilot 20,000 lbs.</b> 16.5x6in. or 7in. or air disc brakes. 10 Bolt, 11-1/4 in. bolt circle.		0
2741970	S	<b>ConMet PreSet Plus Hub package; front axle.</b>		0
2750001	S	<b>Hubcap: front vented.</b>		0
2765001	O	<b>Front Auto Slack Adjuster.</b>		0
2866020	S	<b>Front Springs: Taperleaf 20K w/ shock absorbers</b> w/ maintenance-free elastomer spring pin bushings. Standard with rubber pins except for C500 which has threaded pins. Not available on W900L. W900B use 2866021.		0
2895302	S	<b>Dual power steering gear: 16-22K Sheppard HD94.</b> Heavy duty. Not for use on T3.		0
2899336	S	<b>Power Steering Cooler:Radiator Mounted Air-to-Oil</b>		0
2900020	O	<b>Front Frame Raised: 1/2 in.</b>		0
<b>Rear Axle &amp; Equipment</b>				
3142160	S	<b>Dual Meritor RT46-160 rear axle rated at 46K.</b> Tandem rear axles.		0
3200456	O	<b>Rear Axle Ratio - 4.56.</b>		0



Sales Code	Std/Opt	Description	\$ List	Weight
3334004	S	<b>Dual Rear Brakes 16-1/2x7 in. to 46K;</b> Bendix ES-extended service S-cam.		0
3392005	S	<b>Dual Rear Brake Drums: cast.</b>		0
3407050	S	<b>Dual Rear Hubs: Aluminum hub pilot 46K</b> 11-1/4 in. bolt circle.		0
3441972	S	<b>ConMet PreSet Plus Hub package; dual rear axle.</b>		0
3465002	S	<b>Dual Rear axle automatic slack adjusters.</b>		0
3485207	S	<b>Spring Brake: 3030 long stroke dual 30 square</b> inches travel. Helps keep brakes in adjustment longer.		0
3495226	O	<b>Bendix 4S/4M anti-lock brake system.</b>		0
3500037	O	<b>Interaxle driveline:1 Dana 1710 Series</b> Tandem Rear Axels Only.		-12
3742940	O	<b>Tandem Hendrickson HAULMAAX EX (HMX) 460 46K.</b> 54 in. axle spacing, 16.5 in. saddle height. With shocks, track rods and rubber bolster bushings. Unladen Height: 11.5 in. Laden Height: 9.5 in.		174
3830145	O	<b>Delete standard heavy-duty air springs for rear</b> suspension.		-28
<b>Tires &amp; Wheels</b>				
4077533	S	<b>Front tires: Bridgestone M864 425/65R22.5 20PR</b> All Position, On/Off Highway, Wide-base tire.		0
4277513	O	<b>Rear tires: Bridgestone M760 Ecopia 11R22.5 14PR.</b> 42.2 in. diameter, drive. 19.6 in. SLR. Smartway certified. Code is priced per pair of tires.		168
4900008	O	<b>Rear Tire Quantity: 8</b>		0
5045216	O	<b>Front Wheel: Alcoa 82362 22.5x12.25 aluminum,</b> with LM One [TM] finish High Polish, hub-pilot mount. 11400lb. maximum rating. Super single. Standard track axles may be over 102 in. w/425 tires. Air disc brake compatible.		-10
5242338	O	<b>Rear Wheel: Accuride 43644 22.5X8.25 aluminum hub</b> pilot mount standard polish		-312
5900008	O	<b>Rear Wheel/Rim Quantity: 8</b>		0
<b>Frame &amp; Equipment</b>				
6056400	O	<b>Frame Rails: 10-3/4 x 3-1/2 x 3/8in. Steel 285in.</b> to 336 in. Truck frame weight is 3.48 lb.-in. per pair of rails. Section modulus is 17.80, RBM is 2,132,000 in.-lbs per rail. Frame rail availability may be restricted based upon application, axle/suspension capacity, fifth wheel setting, or component/dimensional specifications. The results of the engineering review may result in a change to the requested frame rail. If a change is required Kenworth Application Engineering will advise the dealer of the appropriate material specification for a substitute rail.		393

Sales Code	Std/Opt	Description	\$ List	Weight
6141400	O	<b>Full Steel Insert: for 10-5/8 in. or 10-3/4 in.</b> Steel 285 in. to 336 in. or 2nd insert for 11-5/8 in. steel frame. Adds 1,149,000 in-lb to main rail RBM. Truck insert weight is 2.05 lb.-in. per pair of rails. Full frame insert length is equal to wheelbase plus rear frame cutoff plus dimension forward of front axle by model: T660, T680, T800, T880 = 21.26 in.; C500B = bumper setting minus 0.79 in.; W900B = 5.27 in., W900L = 1.50 in., W900S = 3.27 in.; T440/T470 50 in. bumper setting = 21.26 in., T470 73 in. bumper setting = 72.3 in.		642
6302461	O	<b>Bumper: Tapered chrome steel channel. Requires a bumper setting code.</b>		63
6319485	S	<b>48.5 in. Bumper setting. Requires a bumper code.</b>		0
6324025	O	<b>Front tow hook: Center mounted, cast.</b> Requires iron front drive brackets.		28
6390001	O	<b>Steel shackle links.</b>		8
6391203	O	<b>Custom Frame Layout: 3-4 chassis</b> CFL FT: UNDER PASS SIDE CAB		0
6400636	O	<b>Battery box cantilever aluminum BOC with fiberglass cover.</b>		8
6409901	S	<b>Battery box location: LH Side.</b>		0
6451090	S	<b>T470,C5, T6, T8 non-polished DPF/SCR or CNG cover</b> diamond plate w/ step. For use w/ 2010 or later exhaust systems. For T8, use extended length non-polished battery box on opposite rail to match the length of under cab components. End plates will be painted standard black frame color.		0
6679824	O	<b>Width across front tires exceeds 102 inches.</b> Dealer to review delivery constraints w/transporter.		0
6679857	O	<b>Final end-of-frame cut-off dimension will be modified to 46 in. to 50 in.</b>		0
6721102	S	<b>Rear mudflap arms: Betts B-25 standard-duty,</b> straight. Includes B1732 mounting brackets as standard.		0
6722000	S	<b>Rear mudflap shields: White plastic antisail w/ Kenworth logo.</b>		0
6741011	O	<b>Square end-of-frame w/ crossmember; non-towing.</b>		30
6790003	O	<b>Special frame drill: dealer to provide drawing</b> with dimensions and revision level. Acceptable hole diameters range from 10.2 mm to 40.4 mm. Preferred file format is .pdf. Not for use for rear suspension, fifth wheel or other published frame drilling code. Does not replace clear frame space requests or custom frame layout.		0
<b>Fuel Tanks &amp; Equip</b>				
7210075	O	<b>Fuel Tank: 75 US gallon 24.5in. aluminum under</b> replace. Class 8 fuel tanks w/o locking caps include an anti-siphon device on the filler neck.		-11
7722153	S	<b>Small round DEF tank, 14 gallons.</b> The DEF tank will be located on the side you specified. If you have specific configuration or body builder concerns, please utilize the		0



Sales Code	Std/Opt	Description	\$ List	Weight
		Custom Frame Layout option. Standard capacity is calculated by fuel capacity of the vehicle and will accommodate two diesel fill-ups for every DEF fill-up. For 1:1 DEF fuel fill ratio, add 7889204.		
7889021	O	<b>Fuel tank locking cap(s). Not available w/</b> hydraulic tank. Tank lock does not match ignition/cab/sleeper locks.		0
7889204	O	<b>DEF to fuel fill ratio between 1:1 and 2:1.</b>		0
7889603	O	<b>DEF tank location is RH.</b>		0
7920075	O	<b>Location: 75 gal fuel tank LH under cab</b>		0
<b>Cab &amp; Equipment</b>				
8025301	S	<b>Cab: Stamped aluminum cab with panoramic curved</b> glass windshield. Standard with stamped aluminum doors, heavy duty in-swinging hinges, and triple sealed doors. Manufactured using self-piercing rivets and structural adhesive. Includes LED exterior marker lights and turn signals.		0
8090605	S	<b>Hood: T880 Short Length MX-Optimized W/Mechan.</b> Fastened Fenders. 116.7 inch BBC.		0
8108011	S	<b>Cab HVAC - Day Cab and 40in Sleeper</b> System With Defrost, A/C, and 48,000 BTU/hr Heater. Includes automatic temperature control with one touch defrost operation and dash mounted cab temperature and solar intensity sensors. Pleated fresh air filter and cabin recirculation air filter standard. The Kenworth HVAC system is designed to provide optimal heating and cooling in all operating environments without need for additional insulation. Cab HVAC without sleeper heater AC is available with 40in sleeper.		0
8190138	O	<b>Shutoff Valves to Isolate Primary Heater</b> Remote mounted on frame under cab.		0
8201047	S	<b>Kenworth Smartwheel: 18 in. Non-Leather With</b> Integrated Radio and Cruise Controls.		0
8201051	O	<b>Column Mtd Retarder Control, RH Side</b> Use with Manual & Allison Transmissions Only.		0
8201200	S	<b>Adjustable telescoping tilt steering column.</b>		0
8203060	O	<b>5 sets of keys. Replaces standard 2 sets of keys.</b>		0
8205177	O	<b>Dash Switch: 1st Allison-mntd PTO.</b> Electric switch and wiring are factory-installed to control the 1st Allison Trans mounted PTO.		0
8208496	O	<b>Three spare switches: Wired to power.</b>		0
8220106	O	<b>Gauge: Dash mounted air filter restriction gauge.</b>		0
8222404	S	<b>Gauge: DD Virtual Gauge - Oil Temp Engine</b>		0
8222413	S	<b>Gauge: DD Virtual Gauge - Manifold</b> Pressure Boost		0



Sales Code	Std/Opt	Description	\$ List	Weight
8222414	S	<b>Gauge: DD Virtual Gauge - Engine Percent</b> Torque		0
8282027	S	<b>Main Instrument Package: 15" Digital Display.</b> Includes Speedometer, Tachometer, Primary Air Pressure, Secondary Air Pressure, Fuel Level #1, DEF Level, DPF Filter Status, Fuel Economy, Oil Pressure, Coolant Temp, OAT and Voltmeter, and Air Application.		0
8282108	O	<b>Modular Dash Options: RH Dash storage unit with</b> two shelves. Reduces total gauge count; HD by 6 and MD by 4.		0
8300008	S	<b>Interior color: Slate Gray</b>		0
8330102	S	<b>Interior package: Vantage daycab</b> Includes durable headliner and vinyl sidewalls with geometric patterned trim and anodized aluminum accents throughout. Convenient overhead storage cubbies, full size glove box, two center console cupholders, and large door pad map pocket. Standard LH/RH power windows, electric door locks, interior LED lighting, nighttime-friendly red ambient lighting for dash and footwell, and door mounted courtesy light. Includes two standard 12V power outlets. Driver sunvisor includes strap.		0
8390634	S	<b>Rubber floormat</b>		0
8410200	O	<b>Driver Seat: GT701 HB with Vinyl material.</b> The GT701 is standard with a single air bag, scissor linkage seat suspension. It includes a single chamber lumbar support, 10in Fore/Aft adjustment, 7in Up/Down adjustment, 2.5in pan extension, 51 degree seat back recline, and 16 degree full seat tilt. Includes 3-point matching seat belts. DR seat standard w/ dual armrests.		0
8480065	O	<b>Rider Seat: KW 2 Person Bench MB with Vinyl</b>		22
8490181	S	<b>Seat Color: Black</b>		0
8496559	O	<b>Driver and Rider Seat Belts: Orange Seat Belts.</b> Replacing standard color.		0
8498452	O	<b>Delete dual DR seat armrests.</b> Not available on GT703 series seats.		-6
8498560	O	<b>Delete inboard RD seat armrest.</b> Not available on GT703 series seats.		0
8601432	O	<b>Kenworth Radio DEA710 AM/FM/WB/USB, Bluetooth</b>		0
8601881	O	<b>CB Radio: Cobra 29. W/header mounted quick</b> release. Includes transceiver & separate speaker remote-mounted in headliner & dual CB antennas. Includes sound tracker & illuminated panel.		11
8698974	S	<b>Base Level Audio System - Daycab:High Performance</b> Door Speakers.		0
8700197	S	<b>Turn Signal: Non-Self Cancelling</b>		0
8700283	S	<b>LH and RH Trip Ledge Rain Deflectors</b>		0



Sales Code	Std/Opt	Description	\$ List	Weight
8700663	S	<b>Kenworth TruckTech+</b> The Kenworth Remote Diagnostics system provides the Worlds Best reporting of engine and aftertreatment fault codes, as well as enhanced support for the truck owner through rapid communication of fault severity and recommended actions. This option is Standard on all Heavy Duty Kenworths with a PACCAR MX engine, Cummins X15 engine, PX engine or Natural Gas engine. Optional on Medium Duty Kenworths.		0
8800382	O	<b>Grabhandle: LH SOC Non-Slip Ergonomic</b> Grab Handle Mounted To The Left Hand Exterior Of The Cab For Entry and Exit. NFPA Compliant.		3
8800402	S	<b>Dual Cab Interior Grabhandles: A Pillar Mounted</b> Dash Wrap and B Pillar Mounted Grabhandles		0
8832113	S	<b>Kenworth Daylite Door with standard LH/RH</b> electric door locks and LH/RH electric window controls.		0
8841618	O	<b>Dual rectangular air horn 23 in. LH &amp; RH top of</b> roof. Includes air horn covers.		4
8850139	S	<b>Look-Down, Pass. Door, Black 11x6</b>		0
8850812	O	<b>Mirror: LH Hood Mounted, Round Convex, Chrome</b>		4
8850813	O	<b>Mirror: RH Hood Mounted, Round Convex, Chrome</b>		4
8865002	S	<b>Aero Mirror: Dual Kenworth Aerodynamic Motorized</b> heated mirrors, 7in X 13in with cab color mirror shell and black mirror arms. Also includes LH/RH heated 6in X 7in convex mirrors. Mirror brackets set for 8-1/2 ft load width. Mirror controls located on driver side door pad.		0
8871446	S	<b>Rear cab stationary window 19in x 36in</b>		0
8879917	O	<b>Two additional outboard windows 19in x 12in</b>		10
8890101	S	<b>One-piece bonded-in windshield with curved glass.</b> Standard.		0
8890135	S	<b>Exterior stainless steel sunvisor.</b>		19
8890349	S	<b>Wheelwell Fender Extension: 2.5 Inches</b>		0
8890876	S	<b>Kenworth Cab/Sleeper Air Suspension.</b>		0
<b>Lights &amp; Instruments</b>				
9010553	S	<b>Headlamps: SAE Dual Halogen Complex Reflector</b>		0
9022137	S	<b>Marker Lights: Five, rectangular, LED</b>		0
9030016	S	<b>Turn Signal Lights: Flush mounted LED. Mounted at</b> top of fender wheel arc.		0
9030052	S	<b>LED Stop,Turn,Tail: With Two LED</b> Backup Lights and With An LED License Plate.		0

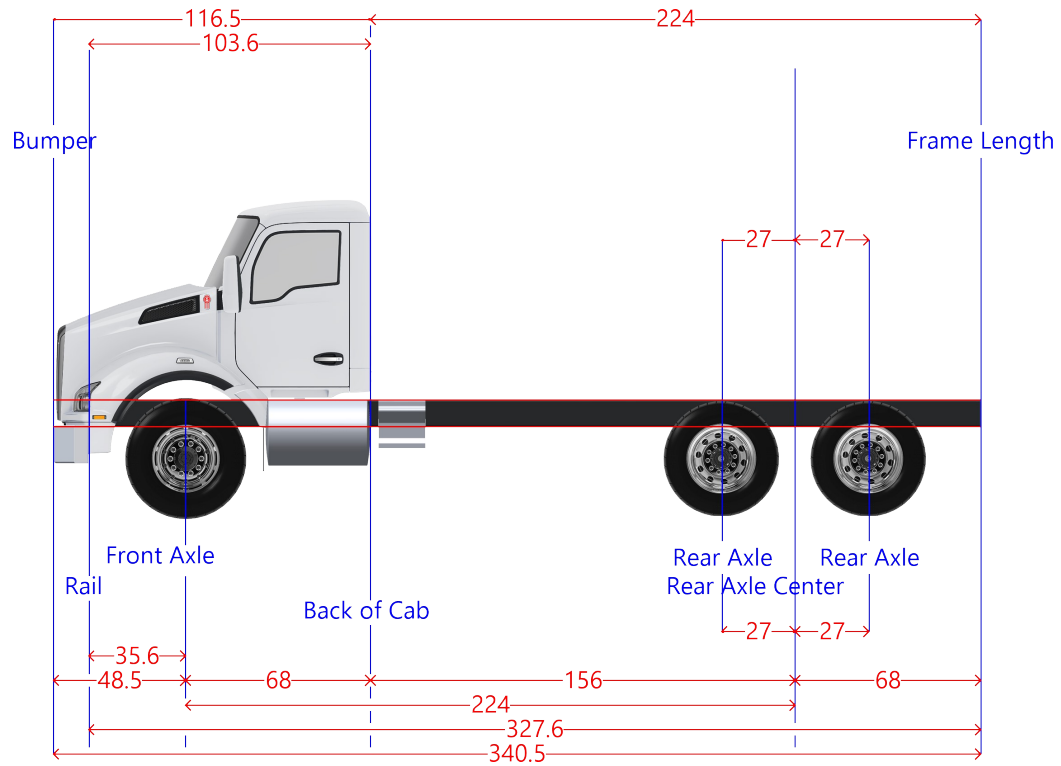


Sales Code	Std/Opt	Description	\$ List	Weight
9090039	S	<b>Marker Lights: Interrupter Switch.</b> Included in Turn Signal For All Models Except T3. The T3 Switch Is In The Dash.		0
9090049	S	<b>Omit Brake Light with Engine Brake.</b> Can only be selected when chassis also has engine brake. Cannot be used with options to delete engine brake.		0
9090115	O	<b>Reflectors: Two Midframe</b>		0
9090126	O	<b>Electric Backup Alarm: Meets SAE J994 &amp; OSHA</b> requirements.		4
9090316	O	<b>Junction Box: End of Frame</b>		1
9090849	O	<b>Polyswitches replacing fuses. Switch will</b> automatically reset after removal of excess load.		0
<b>Air Equipment</b>				
9101219	O	<b>Air Dryer: Bendix AD-HF Extended Purge Heated</b> With Puraguard		0
9108001	S	<b>Moisture ejection valve w/ pull cable drain.</b>		0
9140020	S	<b>Nylon air tubing in frame &amp; cab, excluding hoses</b> subject to excessive heat or flexing.		0
9140286	O	<b>Air tanks: clear of left side of transmission</b> area. This code requires the use of a custom frame layout code.		0
<b>Extended Warranty</b>				
9200006	O	<b>Base Warranty - PACCAR MX-11 &amp; MX-13 Engine</b> 24 months / 250,000 miles / 400,000 km / 6250 hours.		0
9200021	S	<b>Base Warranty - Standard Service Heavy Duty</b> 12 months / 100,000 miles / 160,000 km.		0
9212601	S	<b>24 Month TruckTech+ Subscription for PACCAR MX</b> Engines w/ OTA Functionality		0
9220001	O	<b>Base Warranty: Emissions</b> 5YR/100K MI - EPA Engine (Does not include CARB Clean Idle sticker)		0
<b>Miscellaneous</b>				
9409852	O	<b>GHG Secondary Manufacturer: Does Not Apply</b>		0
9490003	O	<b>Additional lead time required for off highway &amp;</b> /or specialty component truck.		0
9490206	O	<b>Warning triangle reflector kit: Shipped loose.</b> Kit consists of 3 triangles in plastic carrying case. Not floor mounted.		4
9490404	O	<b>One 5 lb. dry chemical type fire extinguisher</b> mounted outboard of driver seat. Class ABC.		11
9491659	S	<b>VMUX Architecture</b>		0
<b>Promotions</b>				
<b>Paint</b>				



<b>Sales Code</b>	<b>Std/Opt</b>	<b>Description</b>	<b>\$ List</b>	<b>Weight</b>
9700000	O	<b>Paint color number(s).</b> N9702 A - L0006 WHITE N9720 FRAME N0001 BLACK		0
9943004	O	<b>Bumper Unpainted</b>		0
9943048	O	<b>Day Cab Bulk Paint</b>		0
9943050	O	<b>Day Cab Standard Paint</b>		0
9944820	S	<b>1 - Color Paint - Day Cab</b> Color will be White if no other color is specified.		0
9965510	S	<b>Base coat/clear coat.</b> The Kenworth Color Selector contains additional instructions, as well as information on Kenworth paint guidelines and surface finish applications. Kenworth is standard with Dupont Imron Elite paint.		0

## HORIZONTAL DIMENSIONS



Dimension	Measurement	Start	End
Axle Spacing	54	197	251
Bumper to Back of Cab	116.5	-48.5	68
Bumper to Front Axle	48.5	-48.5	0
Bumper to Front Frame	12.9	-48.5	-35.6
Cab to End of Frame	224.0	68	292
Cab to Rear Axle	156.0	68	224
Effective Bumper to Back Of Cab	116.5	-48.5	68
Frame Length	327.6	-35.6	292
Front Axle to Back of Cab	68.0	0	68
Front of Frame to Axle	35.6	-35.6	0
Load Space	224.0	68	292
Overall Length	340.5	-48.5	292
Overhang	68.0	224	292
Pusher Offset #1	27.0	197	224
Pusher Offset #2	27.0	197	224
Pusher Offset #3	27.0	197	224
Tag Offset	27.0	224	251
Wheelbase	224	0	224



WE NEVER STOP WORKING FOR YOU

# DuraPack® 5000

High-Compaction Rear Loader



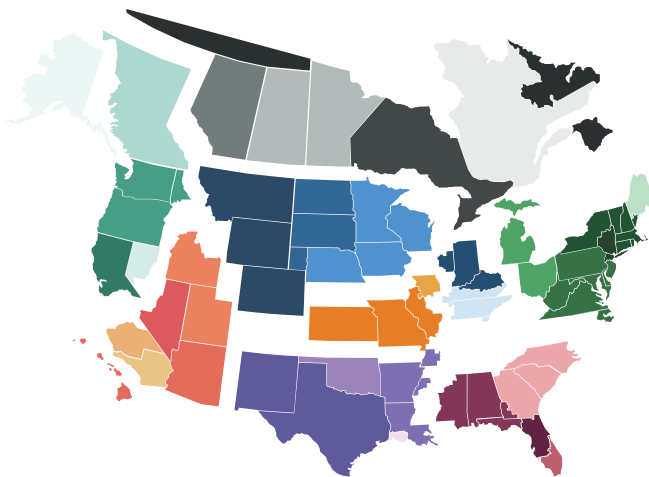
## EXPEDITE THE PURCHASE OF YOUR HEIL® UNIT THROUGH SOURCEWELL

Sourcewell Cooperative Purchasing Program has awarded Heil a nationally bid contract for “Solid Waste and Recycling Collection Equipment with Related Equipment, Accessories, and Supplies.” Through the Heil contract, Sourcewell members can purchase any of the Heil line of refuse and recycling equipment, including front-loading, side-loading, and rear-loading refuse collection vehicles, without having to create an RFP and send the project through a time-consuming duplicate bid process. By using the existing nationally bid contract, members can receive the products they need more quickly and cost effectively. Best of all, Sourcewell membership is free! Qualified agencies can join online via the Sourcewell purchasing website at [www.sourcewell-mn.gov](http://www.sourcewell-mn.gov). To find out more about purchasing Heil equipment via the Sourcewell contract, please contact your local Heil Dealer at [www.heil.com/dealers](http://www.heil.com/dealers).



## TRUST HEIL® CERTIFIED OEM PARTS

Heil Certified OEM parts are the most reliable replacement parts for Heil refuse collection vehicles. They're made following the exact specifications and production processes on the same assembly lines as the parts originally installed on the bodies. This means that they fit perfectly every time. Heil uses only the highest-quality materials for parts that last - minimizing costly downtime. For more information on parts, contact your Heil dealer. Visit: [www.heil.com/dealers](http://www.heil.com/dealers) to find the dealer nearest you.



## RELY ON EXPERIENCED LOCAL SUPPORT

When you buy from Heil, you gain the aftermarket support of the industry's strongest network of dealers in North America. We stand behind our dealers, so you get the product support you need for the life of your products. Our dealers are also trained to help you find the best product for your particular route needs. To find the Heil dealer nearest you, visit: [www.heil.com/dealers](http://www.heil.com/dealers).



All Heil products are Connected Collections™ ready. This is part of our vision, focused on helping fleet owners make better decisions, faster. For more information on ESG's Connected Collections, contact your local Heil dealer or visit us online at [www.heil.com/connected-collections](http://www.heil.com/connected-collections)

[www.heil.com](http://www.heil.com)     



## COUNT ON THE LOWEST TCC

Helping you save money is our passion, and we apply tremendous resources to advance our product and service offerings to improve the profitability of your business and provide the lowest Total Cost of Collection and the maximum return on your investment. You can be confident that choosing Heil equipment brings a long-term partnership with the industry leader.



## CONFIGURATION ASSISTANCE

Chassis layout drawings are available through your local Heil dealer. To find your dealer, visit [www.heil.com/dealers](http://www.heil.com/dealers).



## INDUSTRY-LEADING TRAINING

Heil has completely revamped their training programs with the addition of both the Heil Service Shack™ and our four-tiered Nexteligenze® Connected-Tech Training Program. Now, customers can visit the Heil Service Shack on the Heil website to learn the latest techniques and view helpful service and training videos any time, as well as sign up for Connected-Tech courses to better train technicians on Heil Refuse Products. Ensure your shops are servicing your Heil products correctly; check out the Heil training offerings at [www.heil.com/nexteligenze](http://www.heil.com/nexteligenze).