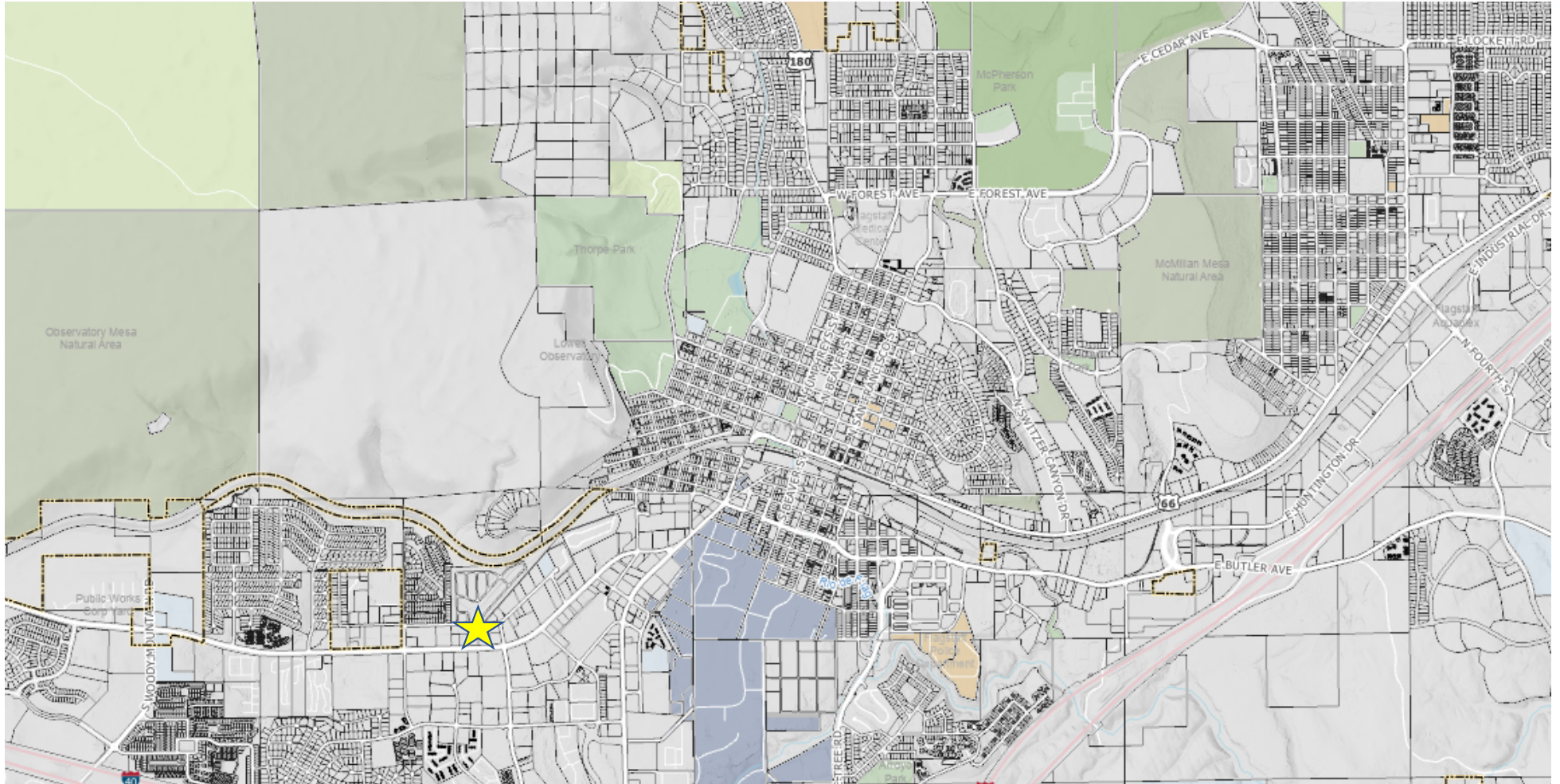


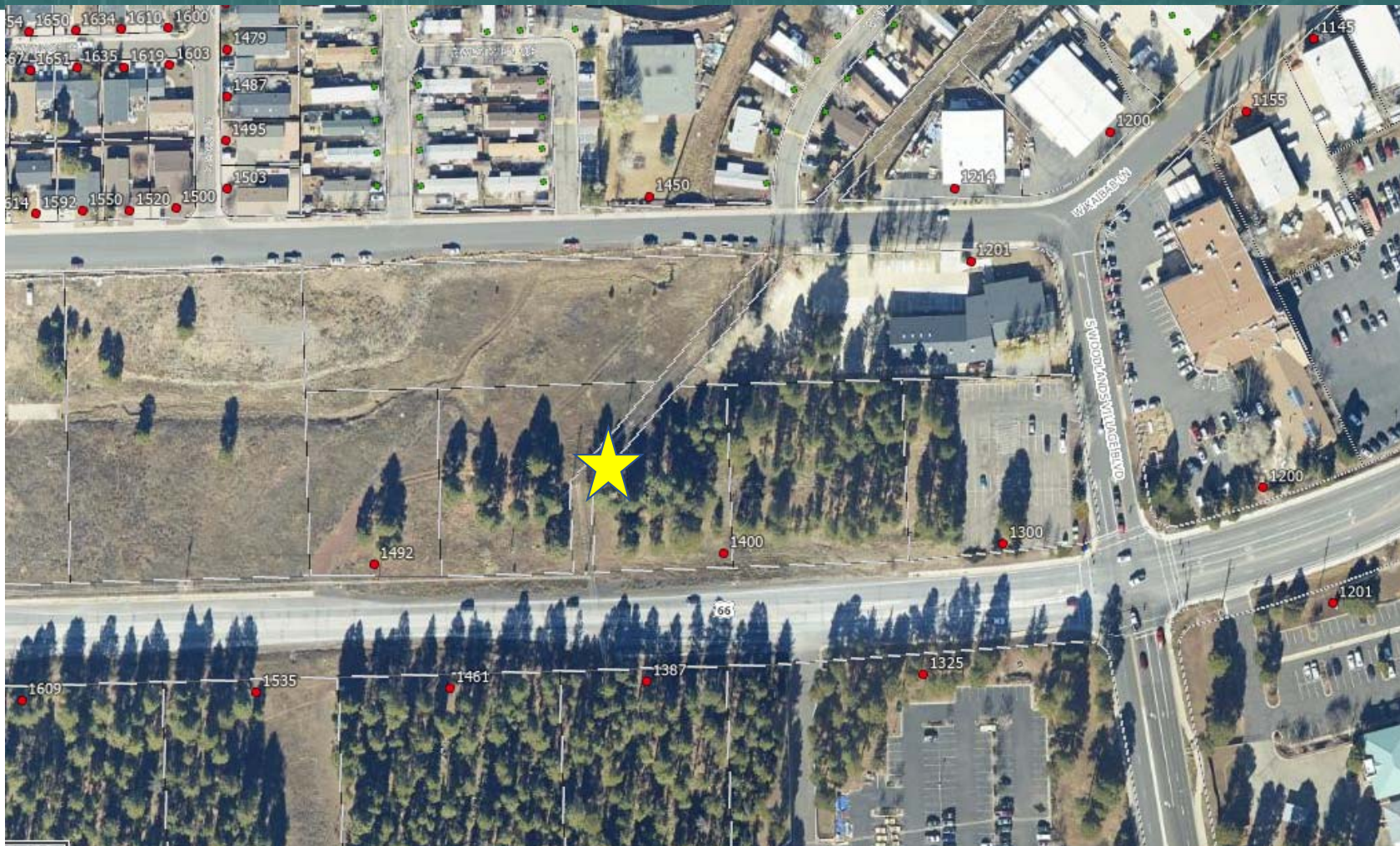
# Abandonment Request 1400 Rt. 66





# Vicinity Map









Flagstaff, Arizona

Google Street View

Apr 2023 See more dates



Google

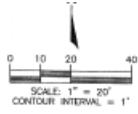


CITY OF FLAGSTAFF  
WE MAKE THE CITY BETTER





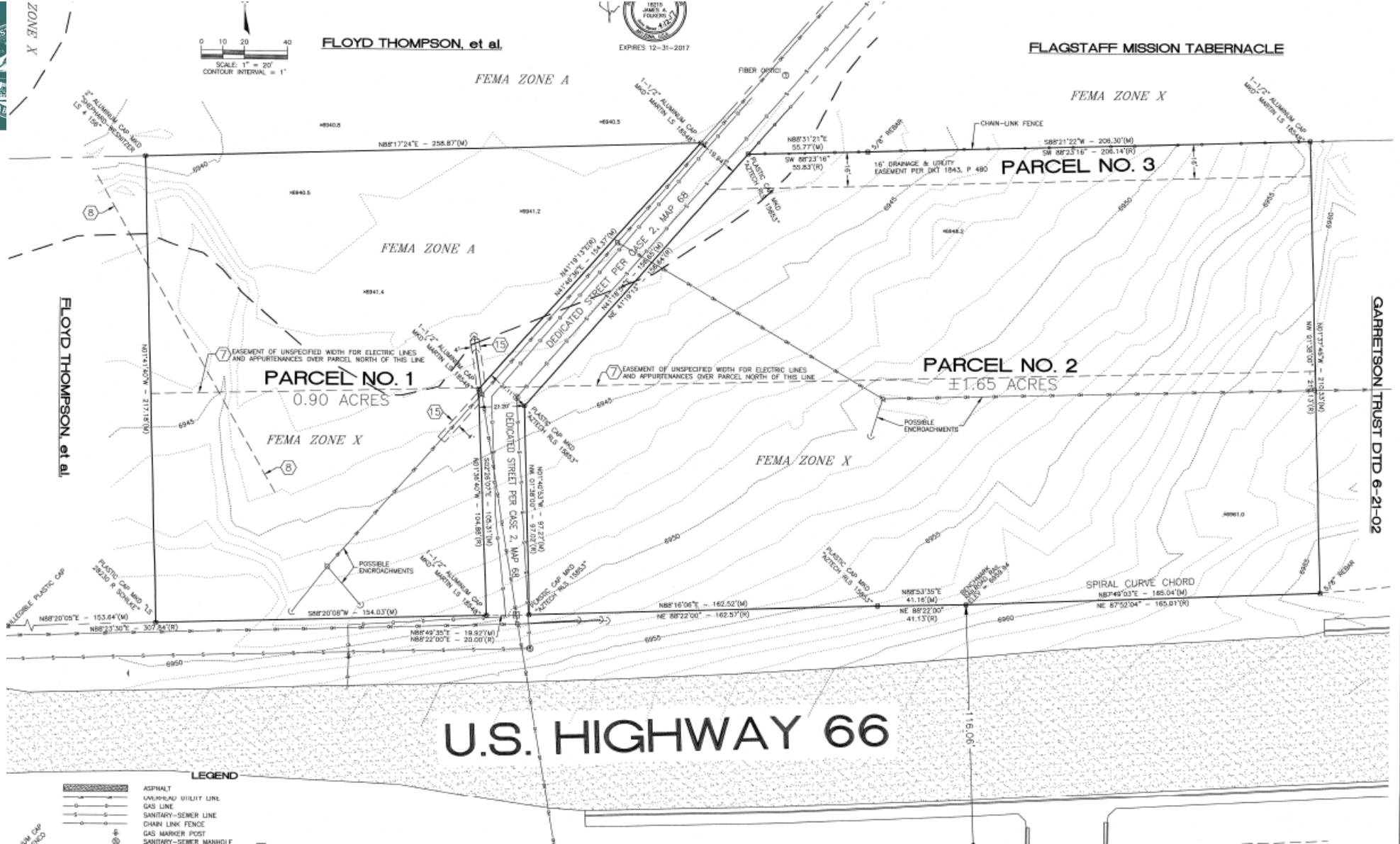
ZONE X



FLOYD THOMPSON, et al



FLAGSTAFF MISSION TABERNACLE



U.S. HIGHWAY 66

LEGEND

- ASPHALT
- OVERHEAD UTILITY LINE
- GAS LINE
- SANITARY-SEWER LINE
- CHAIN LINK FENCE
- GAS MARKER POST
- SANITARY-SEWER MANHOLE

GARRETTSON TRUST DTD 6-21-02





APN 112-04-002M  
Thompson  
IN 3304783

S76°23'18"E  
21.90'  
APN 112-04-009H  
Flagstaff Mission  
Tabernacle  
IN 3304783

APN 112-04-002P  
Flagstaff Hotels, LLC  
IN 3821571

POINT OF BEGINNING  
FOR DESCRIPTION.

PROPOSED  
ABANDONMENT AREA

NOTES:

RCC = RECORDS OF  
COCONINO COUNTY

IN = INSTRUMENT NUMBER

THIS EXHIBIT BASED ON PLAT  
RECORDED AT INSTRUMENT  
NUMBER 3494771, RCC,  
MADE A PART HEREOF BY  
THIS REFERENCE.

AREA OF ABANDONMENT IS  
0.118 ACRES.

APN 112-04-009E  
Flagstaff Hotels, LLC  
IN 3821571



*Sketch of Proposed  
Abandonment Area  
being a portion of Section 20  
T21N R7E G&SRM  
Coconino County - AZ*

Highway 66

Exhibit "B"  
C.O.F. File Number PZ21-00139

DWG: 22077\_Abandon\_01.dwg

**MARTIN LAND SURVEYS**

1612 N. TW Pump Rd. Belmont, Az 86015 (928)853-2298  
Date: Oct. 13, 2022 Job No. 22077