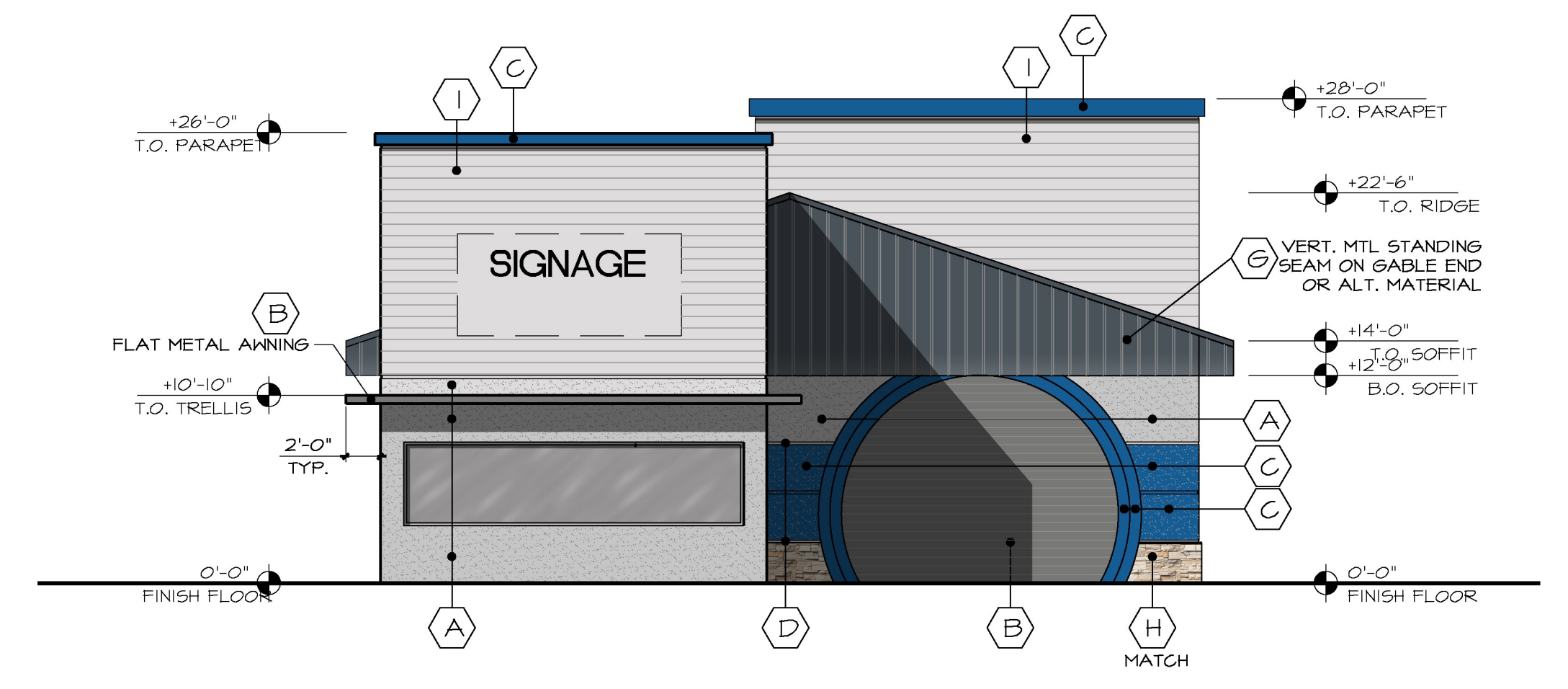


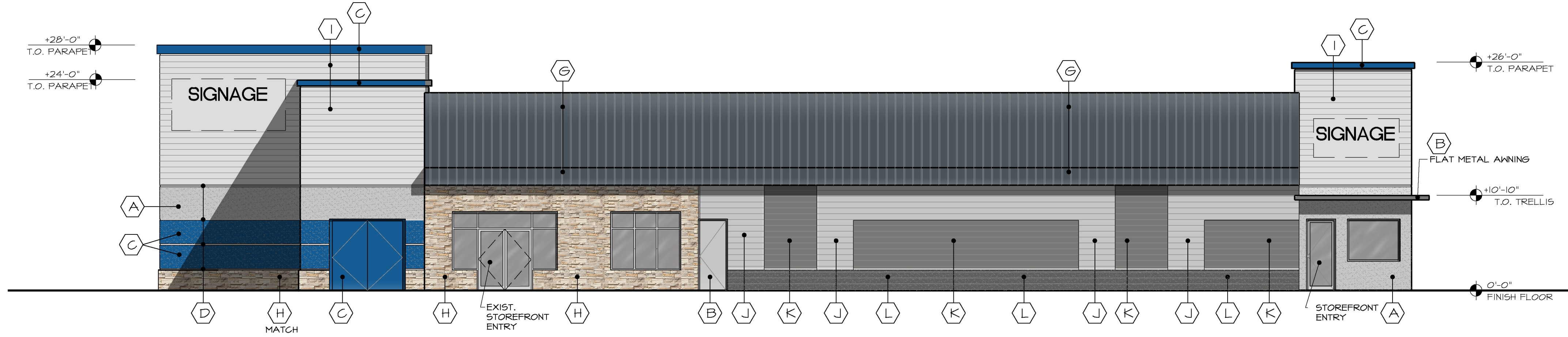
WEST

MATERIAL		
TYPE	S.F.	%
STUCCO	384	11.4
GLASS	56	1.7
METAL	1060	31.4
STONE	10	0.3
MASONRY	1808	53.5
TOTAL	3378	100



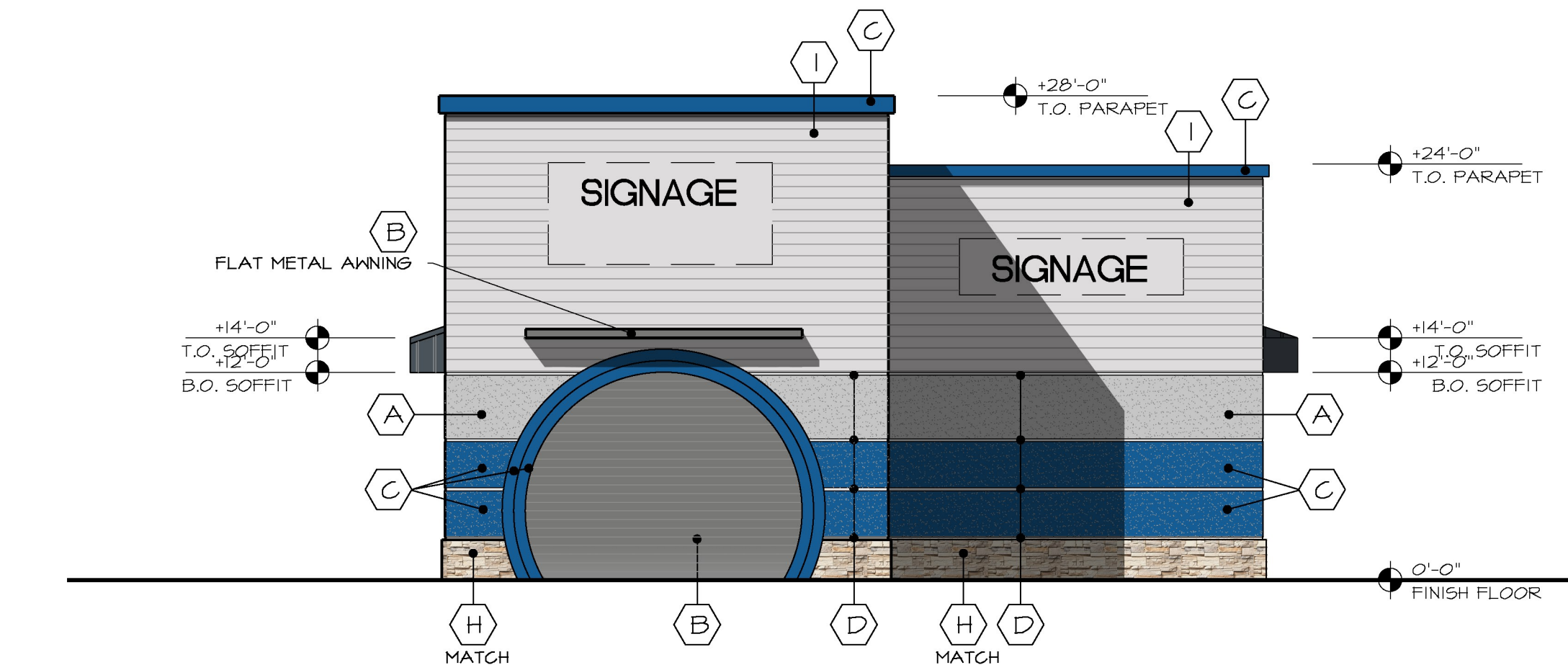
NORTH

MATERIAL		
TYPE	S.F.	%
STUCCO	240	23.4
GLASS	45	4.3
METAL	331	31.7
STONE	17	1.6
MASONRY	501	48.0
TOTAL	1240	100



EAST

MATERIAL		
TYPE	S.F.	%
STUCCO	332	9.8
GLASS	304	8.7
METAL	1150	34
STONE	278	8.2
MASONRY	1414	42
TOTAL	3378	100



SOUTH

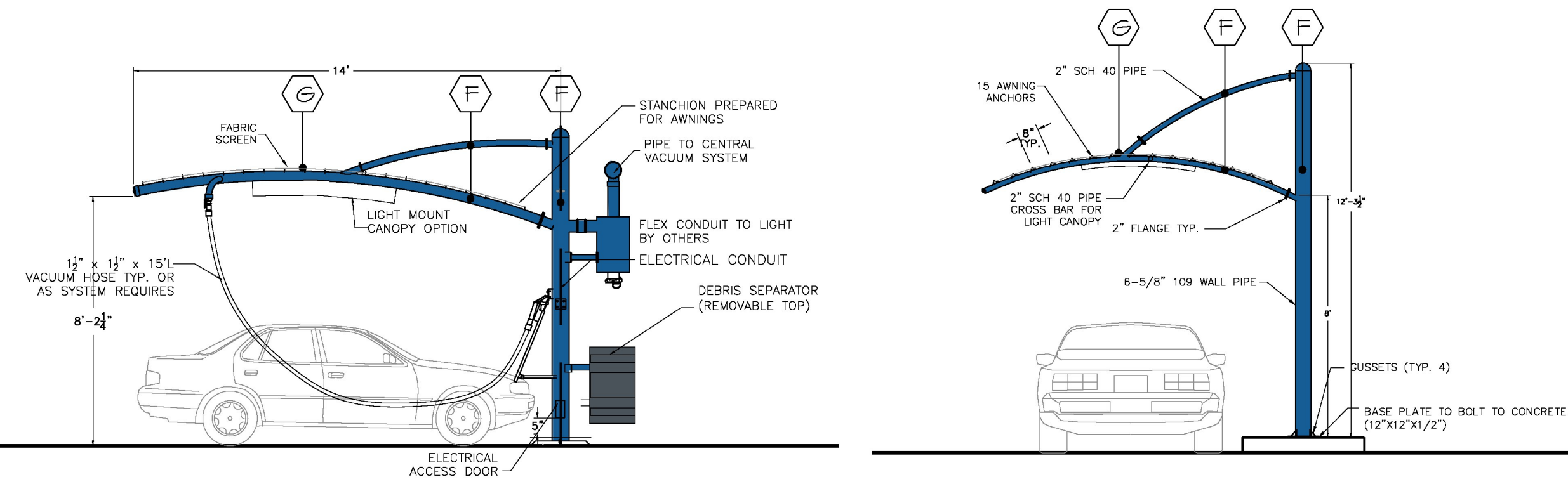
MATERIAL		
TYPE	S.F.	%
STUCCO	336	28
GLASS	0	0
METAL	161	13.5
STONE	10	0.8
MASONRY	650	52.6
TOTAL	1147	100

COLOR SCHEDULE		
BUILDING STUCCO SYSTEM-SAND FINISH	INTEGRAL DUNN EDWARDS DE 6375 CASTLE ROCK LRV 31	(A)
BUILDING STUCCO SYSTEM-SAND FINISH & COILING DOOR	INTEGRAL DUNN EDWARDS DE 6369 LEGENDARY GRAY LRV 15	(B)
BUILDING STUCCO SYSTEM-SAND FINISH & COILING DOOR	INTEGRAL DUNN EDWARDS DE 5846 LAPIS LRV 10	(C)
FRYE REGLET	NATURAL ALUMINUM	(D)
VACUUM FRAME	POWDER COATED DUNN EDWARDS DE 5846 LAPIS LRV 10	(F)
STANDING SEAM METAL PANEL	ATAS METAL ROOFING 'DUTCH SEAM' CHARCOAL GREY (62) SRI 27	(G)
BUILDING STONE VENEER	EXISTING GULLTURED STONE	(H)
8-8-16 STD. CMU PAINTED	PAINTED DUNN EDWARDS DE 6369 SILVER BULLET LRV 44	(I)
EXISTING 8-8-16 CMU PAINTED	PAINTED DUNN EDWARDS DE 6375 CASTLE ROCK LRV 31	(J)
EXISTING 8-8-16 CMU PAINTED	PAINTED DUNN EDWARDS DE 6369 LEGENDARY GRAY LRV 15	(K)
EXISTING 8-8-16 CMU SPLIT FACE-PAINTED	PAINTED DUNN EDWARDS DE 6370 CHARCOAL SMUDGE LRV 11	(L)

NOTE: ALL WINDOW FRAMES SHALL BE NATURAL ALUMINUM W/ CLEAR GLASS

BUILDING ELEVATIONS

1/8"=1'-0"



SINGLE STANCHION

EXPRES PAY STATION

CANOPY ELEVATIONS

1/4"=1'-0"

Ocean Blue Express Carwash
1899 S Woodlands Village Blvd.
Flagstaff, AZ 86001

John Reddell Architects, Inc.
ArchitectuInteriors Land Planning
4992 S. 158th Street, Gilbert Arizona 85298
602-531-2854 Email: john@reddellarchitects.com

John Reddell

Date:	04/25/23
Revisions:	

