

Active Transportation Master Plan Amendments

City Council | 3 July 2023



Active Transportation Master Plan 32pt

- Adopted by City Council on Nov 1, 2022 by resolution No. 2022-50
- Guide for enhancing walking and biking:
 - Policy guidance to advance the transportation goals and vision of the Regional Plan
 - Establish specific goals and strategies to support and promote walking and biking
 - Identify and prioritize needed infrastructure





ATMP amendments



- Proposed amendments support Safe Streets for All (SS4A) grant application for Butler Ave complete street conversion
 - Reference safety as factor in prioritization of infrastructure
 - Identify corridors for potential “complete streets conversions”
 - Including Butler Ave



Summary of amendments

- Updates pedestrian and bicycle crash report to reflect 2017-2021 data (Ch 1, p6)
- Amends safety targets to add serious injury crashes to target of zero fatal pedestrian and bicycle crashes (Ch 4, pp25-26)
- References safety and crash data in prioritization of projects (Ch 8, p66)
- Adds a link to ATMP online map (Ch 8, p69)
- Adds a section to infrastructure recommendations for “Complete streets conversions,” describes the conversions, and includes a map with four priority corridors (Ch8 p78-79)



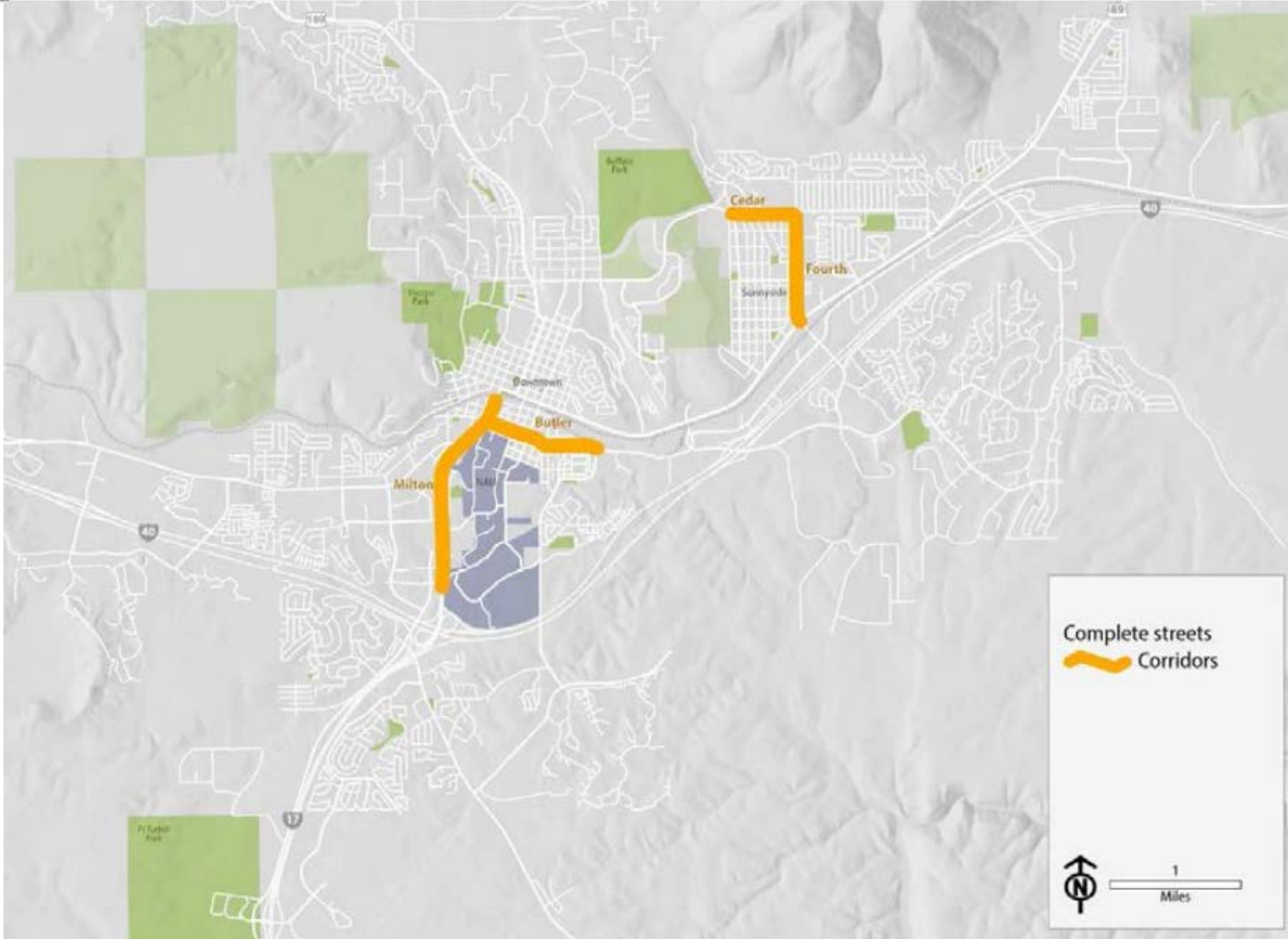
Complete streets conversions

- Typically a combination of needed infrastructure: sidewalks, crossings, bikeways, FUTS trails
- Opportunity for other enhancements: median islands, parkway strips, streetscaping/landscaping, accessibility improvements
- Higher levels of ped-bike use
- High crash corridors
- Proximate to target neighborhoods



Complete street conversions

Complete street conversions



Safe Streets for All grant

- Federal program funded at \$5 billion over next 5 years
- Intended to prevent roadway deaths and serious injuries
- Two grant types:
 - Planning: development of safety action plan
 - Implementation: projects or strategies identified in action plan
- Implementation \$2.5m to \$25m per grant
- Emphasis on equity





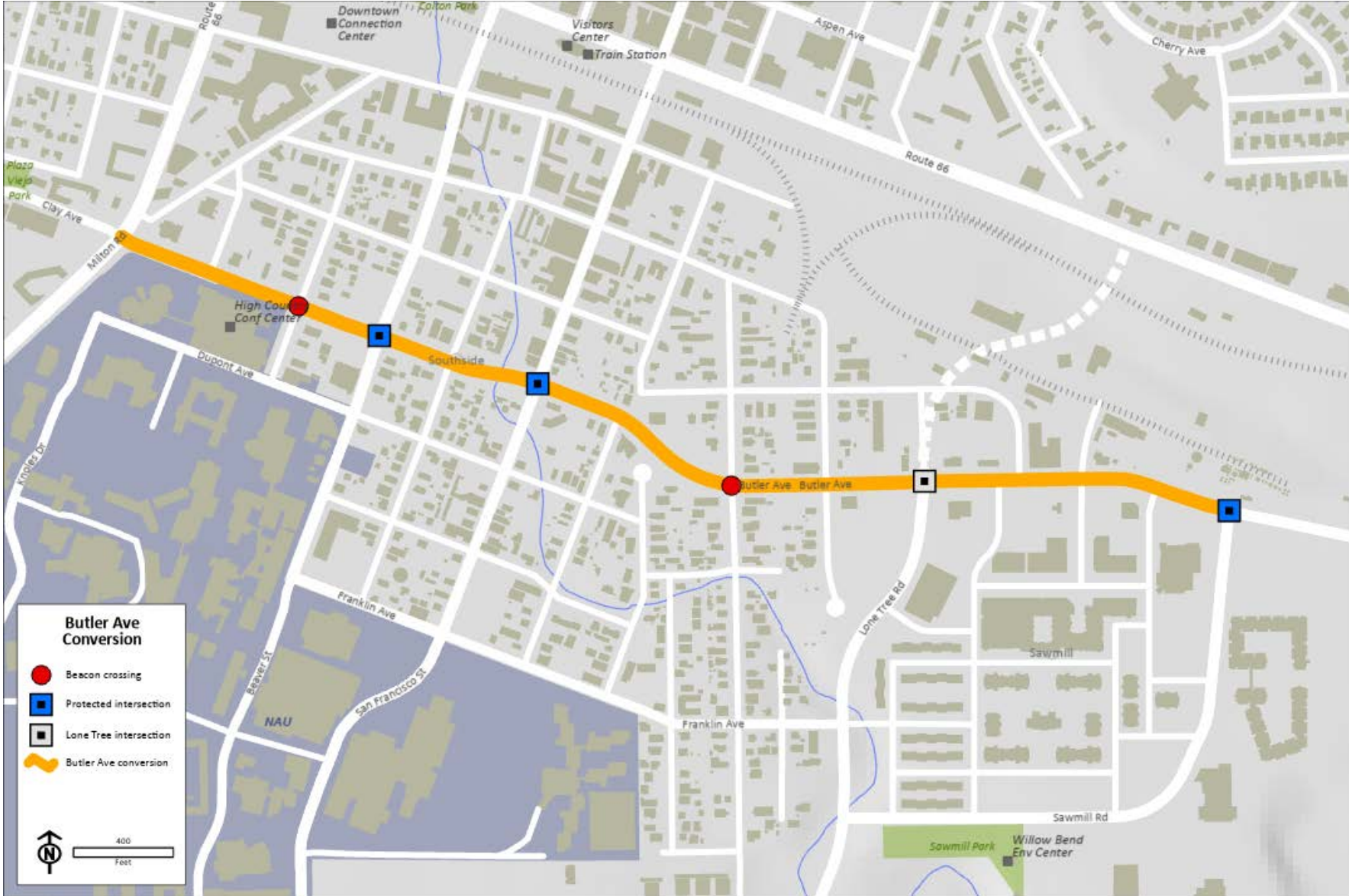
Butler Ave complete street conversion

Butler Ave – Milton to Sawmill (0.9 miles)

- Separated bike lanes to replace pilot barriers
- Protected intersections: Beaver, San Francisco, Lone Tree, and Sawmill
- Enhanced beacon crossings: O'Leary, Humphreys
- Wider sidewalk/added parkway
- Speed management
- Total project cost: \$12m (fed: \$9.6m local: \$2.4m)

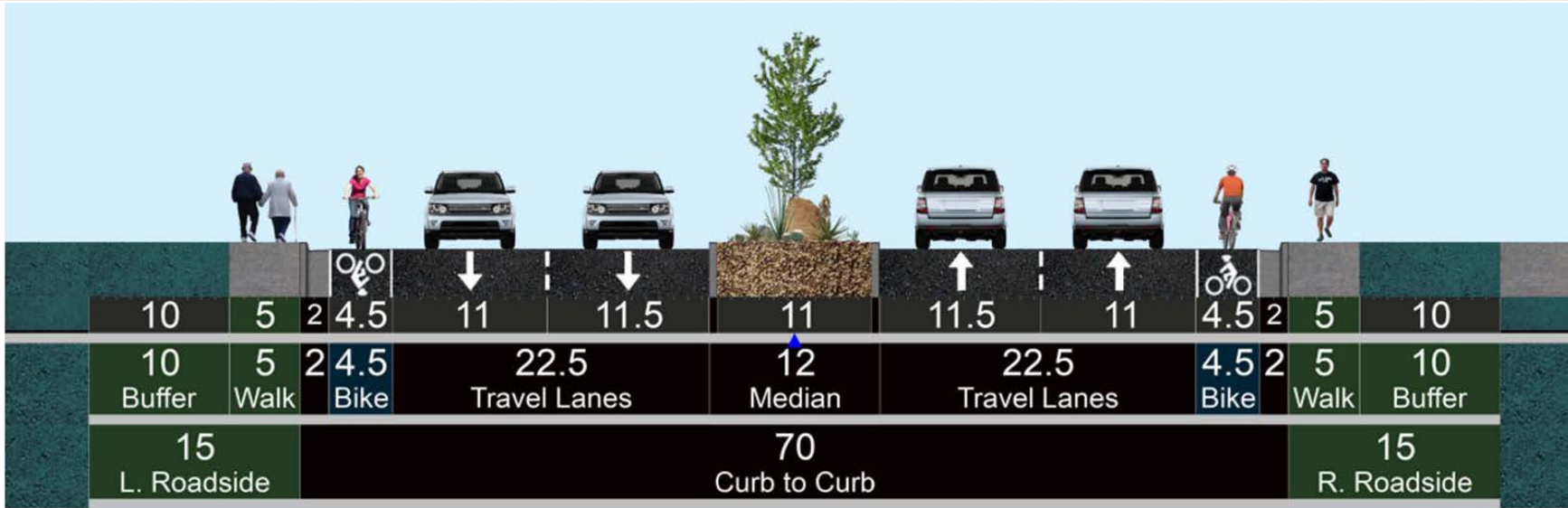


Butler Ave complete street conversion

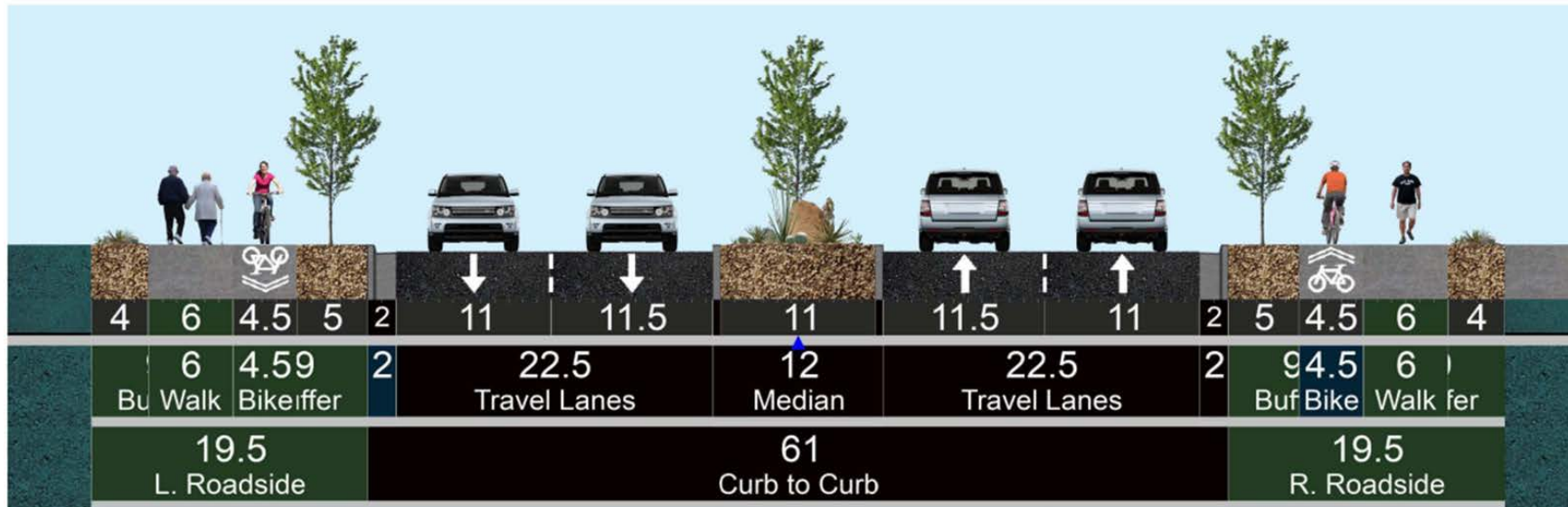




Butler Ave complete street conversion



Original configuration



Planned configuration