

A photograph of several outdoor pickleball courts at Bushmaster Park. The courts have blue playing surfaces and are separated by black mesh fences. The background features tall trees, a building, and a white pickup truck under a blue sky with light clouds. The text "Pickleball Courts at Bushmaster Park" is overlaid in white in the center of the image.

# Pickleball Courts at Bushmaster Park



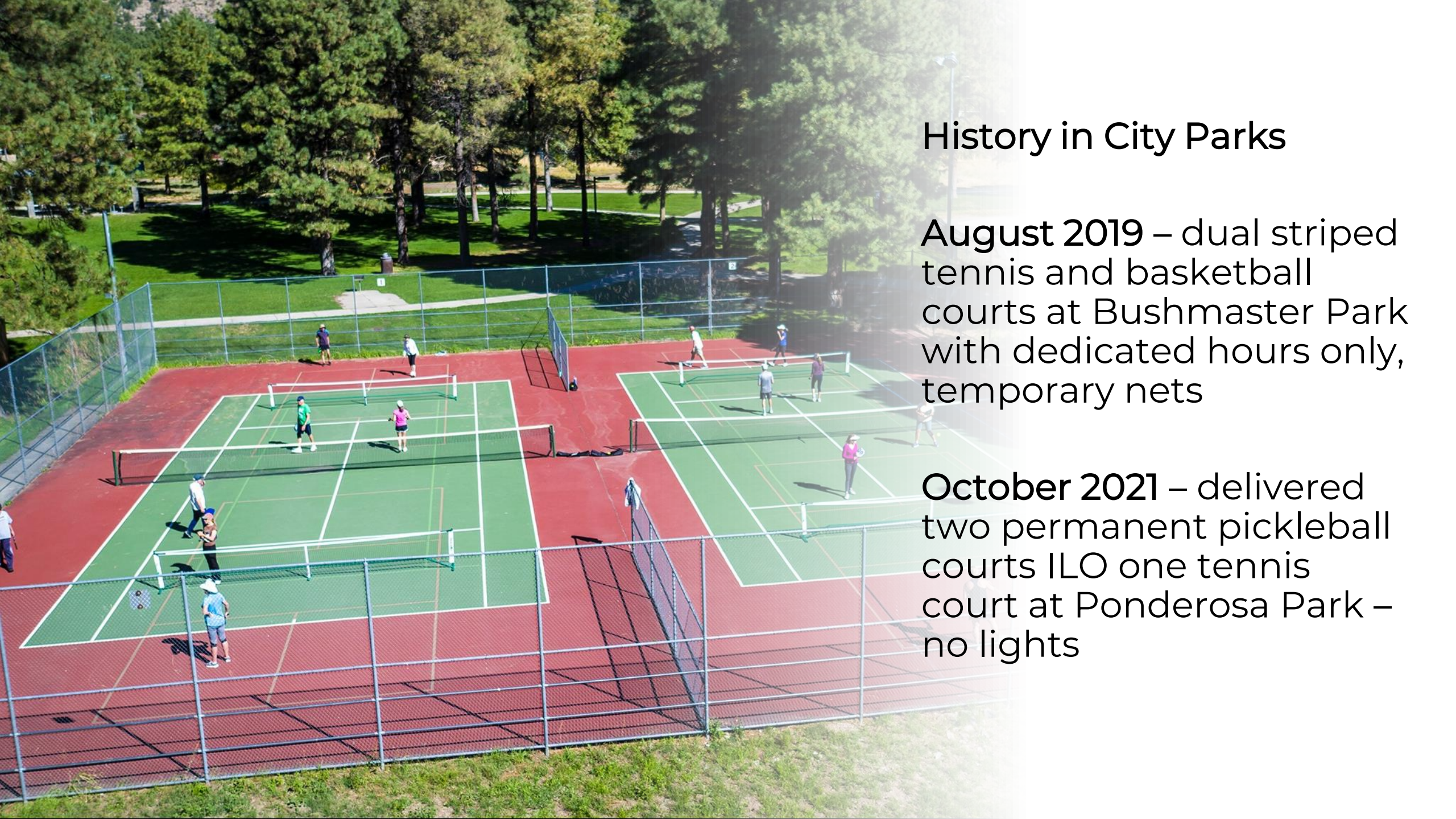
History of pickleball in Flagstaff

Why Bushmaster Park?

Concept design work with Flagstaff Pickleball Association – what did we learn?

Proposal for design-build of 8-new courts and the overlay/resurfacing of the 2-tennis and basketball courts that are dual striped for pickleball play

Inform and Feedback - Postcard mailer



## History in City Parks

**August 2019** – dual striped tennis and basketball courts at Bushmaster Park with dedicated hours only, temporary nets

**October 2021** – delivered two permanent pickleball courts ILO one tennis court at Ponderosa Park – no lights

# Why Bushmaster Park?

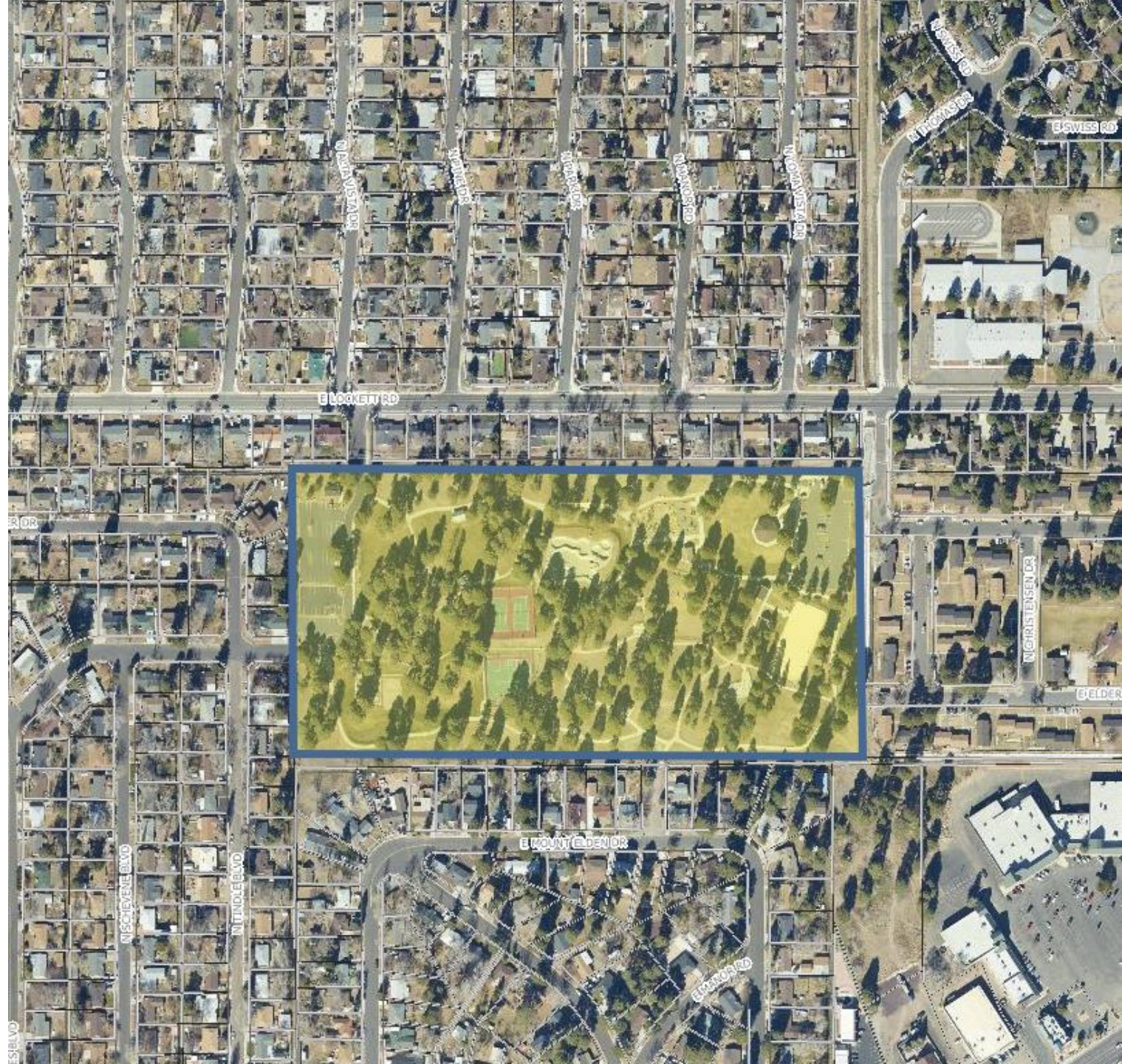
Safe and Healthy Community,  
Livable Community

Community park in Bushmaster Park (20-acres) classification – ideal location, diverse in nature to serve a broader purpose of recreation, athletics, open spaces

Expansion in 2015 – leaving undeveloped 5 +/- acres

Programming and activation of spaces creates wanted behaviors

Parks and Recreation Commission support August 2022, February 2023

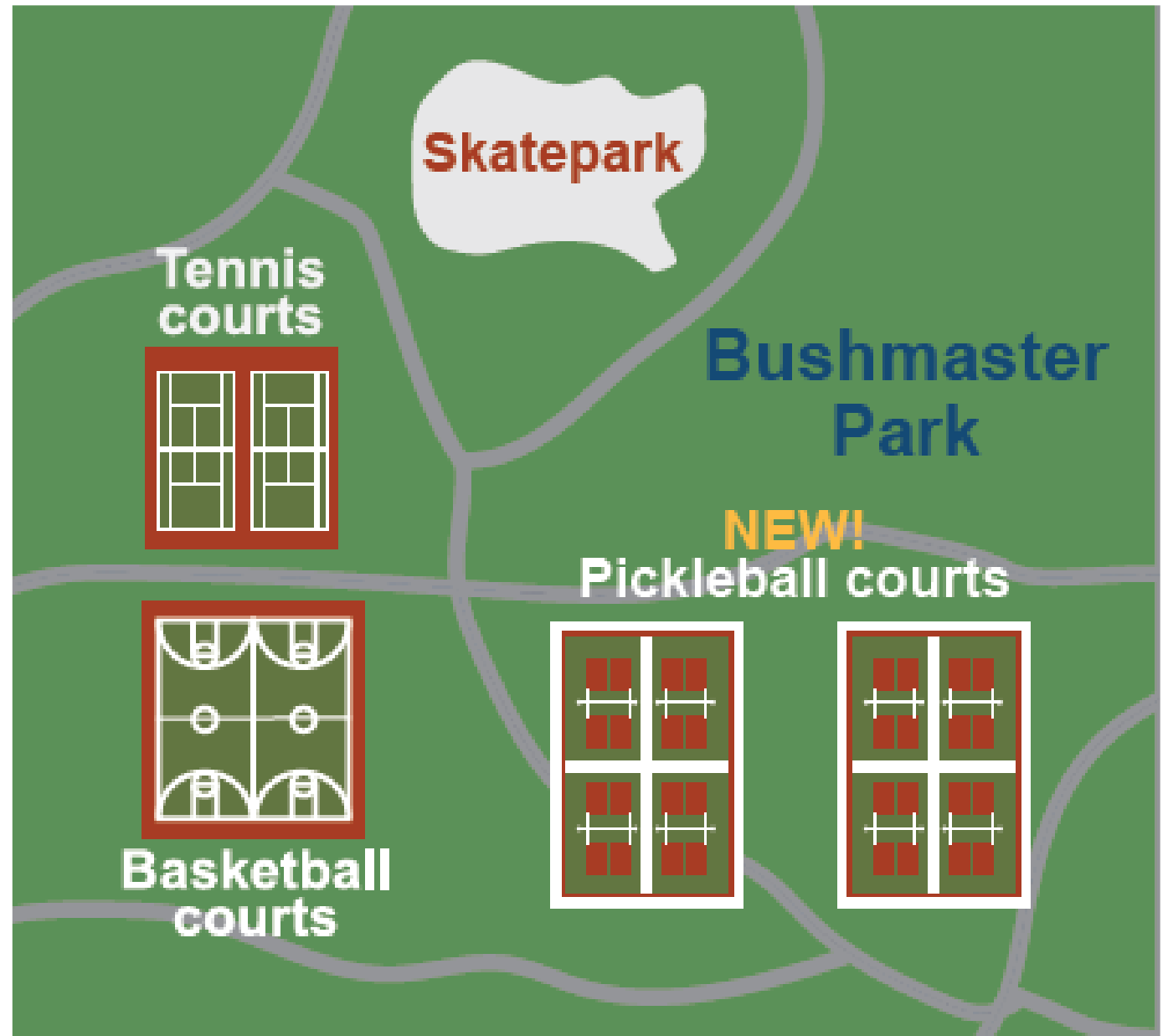




# Court Design, Proposal and Funding

Concept Ideas and Partnering with Flagstaff Pickleball Association (FPA)

Collaboratively learned from the community outreach process for Thorpe Park and engaged in conversations regarding best open design, features



An aerial night photograph of a sports court complex. The complex features several courts with green and blue surfaces, surrounded by a 4-foot-tall fence with openings on the sides. The courts are illuminated by tall, low-profile LED lighting poles. The overall layout is a 4-pod court layout in an 84' x 140' dimension. Perimeter walkways are visible around the courts.

4-Pod Court Layout in 84' x 140' dimension

4-foot-tall fencing with openings on the sides

Perimeter walkways

LED low profile lighting



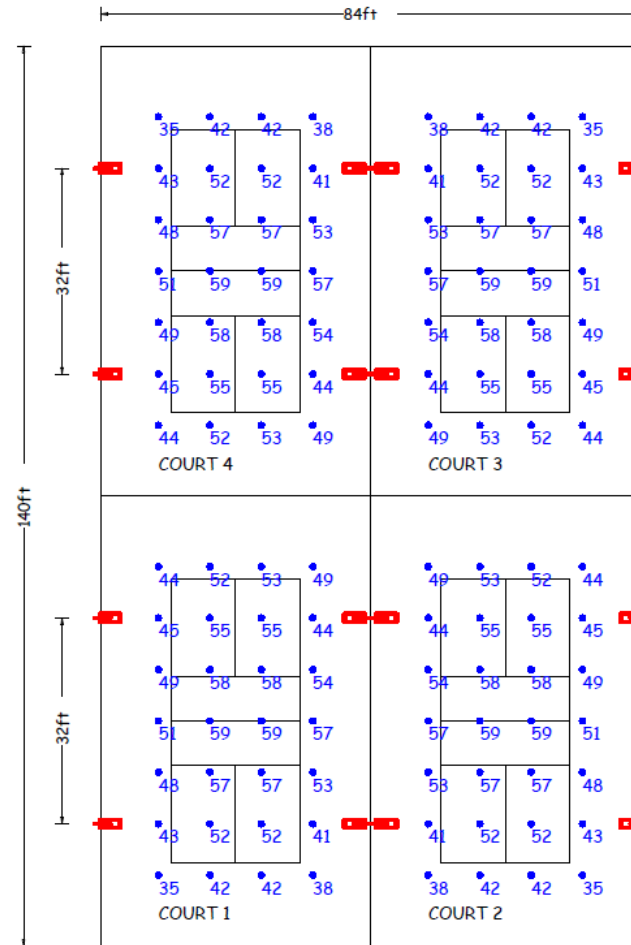
## 4-Pod Layout

- Benefits
  - Social aspect, open feel
  - Construction efficiency
  - Low fencing - inviting
  - Perimeter walkway opportunity - accessible

LSI's ZONE™ LED sports light features a sleek low-profile design and high-performance LEDs paired with precise silicone optics to produce superior levels of illumination and uniformity. Compared with typical HID court lighting systems, the energy load is reduced by up to 75%.

Significant improvement over existing lighting at Bushmaster Park

Please note the LED lighting is only on the new 8-courts and meets Dark Skies compliancy



ZNM



The proposal amount is  
**\$920,643**

Design-build partner is  
General Acrylics, Inc.

Funding source is BBB-Rec  
funds – shift for PROSE!

Opportunity to pick the  
color scheme

Include the BBB logo,  
PROSE logos



# Inform Feedback

Postcard mailer to 78 residences that are directly adjacent to the Community Park to inform

## Feedback from some of the residences

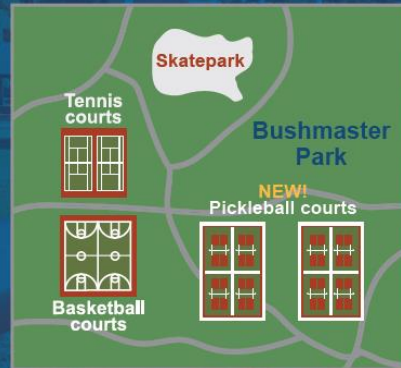
Direct comments:

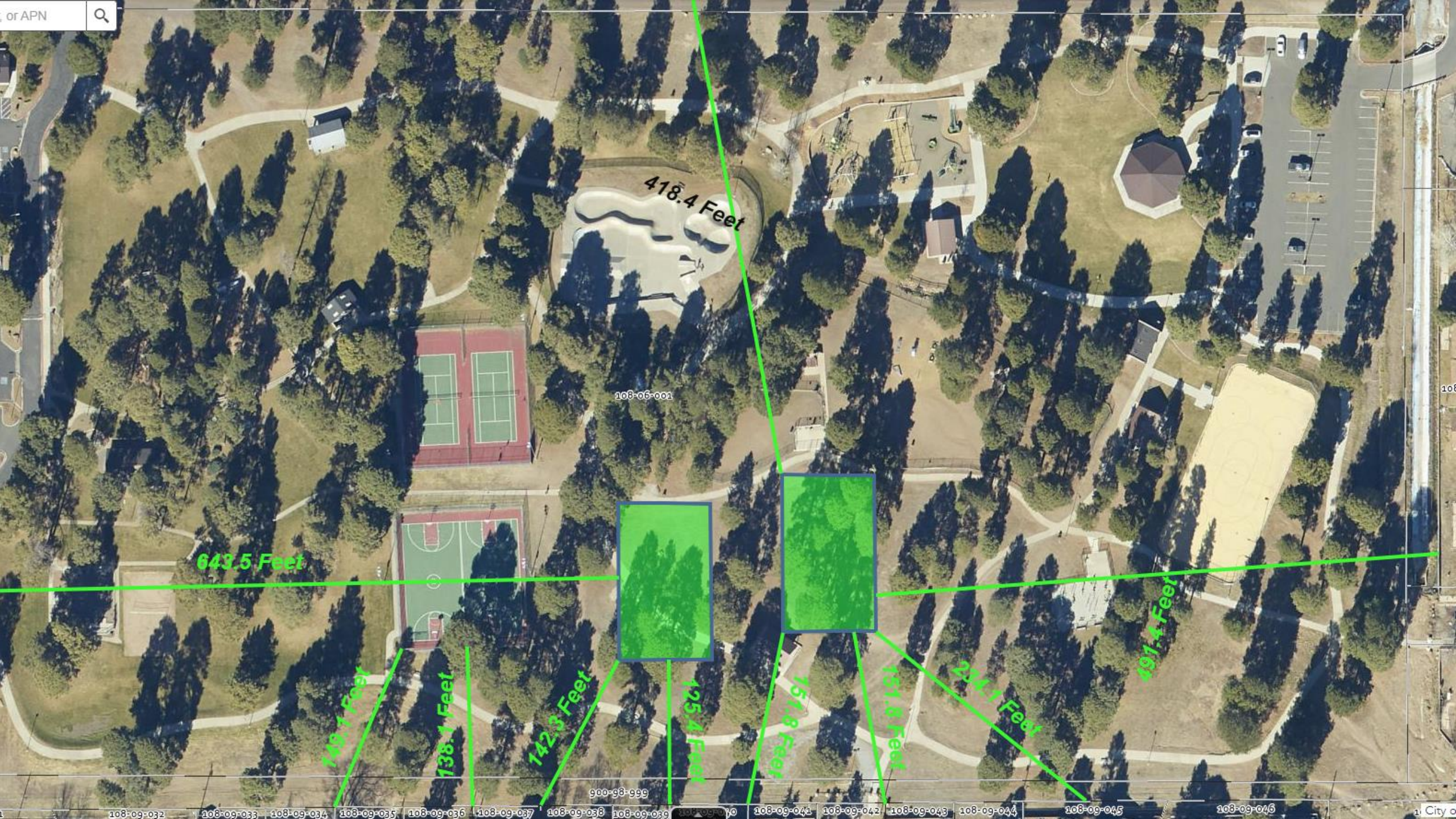
“Pickleball courts?--- and they happen to be "nestling" directly behind my home”

“I am very much opposed to the City’s proposal to install pickleball courts in Bushmaster Park. I live on the southern border of Bushmaster, a fair distance from the existing tennis courts, and the noise from pickleball is an incessant irritation, from early spring through fall and until the snow falls in winter. Now I see that you plan to build dedicated pickleball courts almost directly behind my home, complete with LED lighting, which will ensure unabated noise from early morning well into the night”

# Pickleball courts are coming to Bushmaster Park this spring/summer!

Scan the QR code below or visit [Flagstaff.az.gov/4833](http://Flagstaff.az.gov/4833) for more information.





418.4 Feet

108-06-001

643.5 Feet

148.1 Feet

138.1 Feet

142.3 Feet

125.4 Feet

151.8 Feet

151.8 Feet

254.1 Feet

491.1 Feet

900-93-999

108-09-032

108-09-033

108-09-034

108-09-035

108-09-036

108-09-037

108-09-038

108-09-039

108-09-040

108-09-041

108-09-042

108-09-043

108-09-044

108-09-045

108-09-046

In observation of other communities in the nation including private subdivision development in the County, a proposal for acoustical walls/barrier for **\$147,791** was obtained. This proposal amount is not within the fund budget.

The noise abatement walls drastically changes the fencing creating the need for 12-foot-tall fencing around each pod. It is professionally suggested that the acoustical walls reduce potential sound decibel at a maximum of 30% (pending specifics) and tend to bounce the sound backwards outside of the perimeter of the court

Staff suggestion is to go with project as proposed with no acoustical walls



Questions and Comments