

# 2023 Forest Health and Operations Update





# Wildland Fire Management Staff



- Paul Oltrogge, Battalion Chief
- Neil Chapman, Captain (Forest Health & FWPP)
- Dylan Guffey, Captain (Operations)
- New WFM Engineers:
  - Cody Glazener (Operations)
  - Mark Adams (Community Risk Reduction & Firewise)
  - Bryor Nittman (Operations)
- Currently Interviewing Fire Fighter Candidates (2 open positions)



# 2023 Treatment Areas



## Ecological Thinning

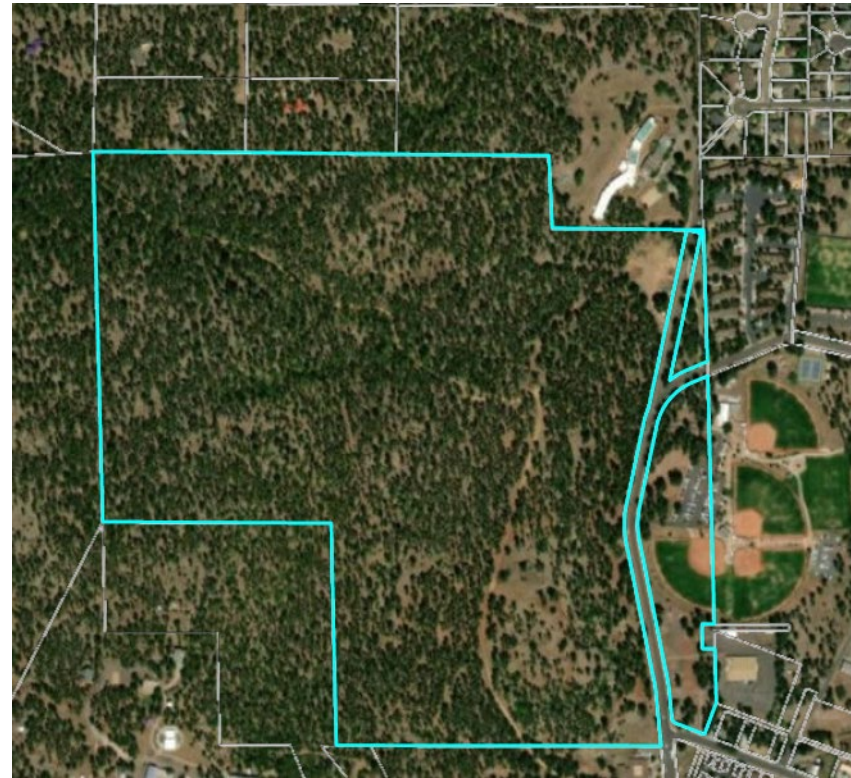
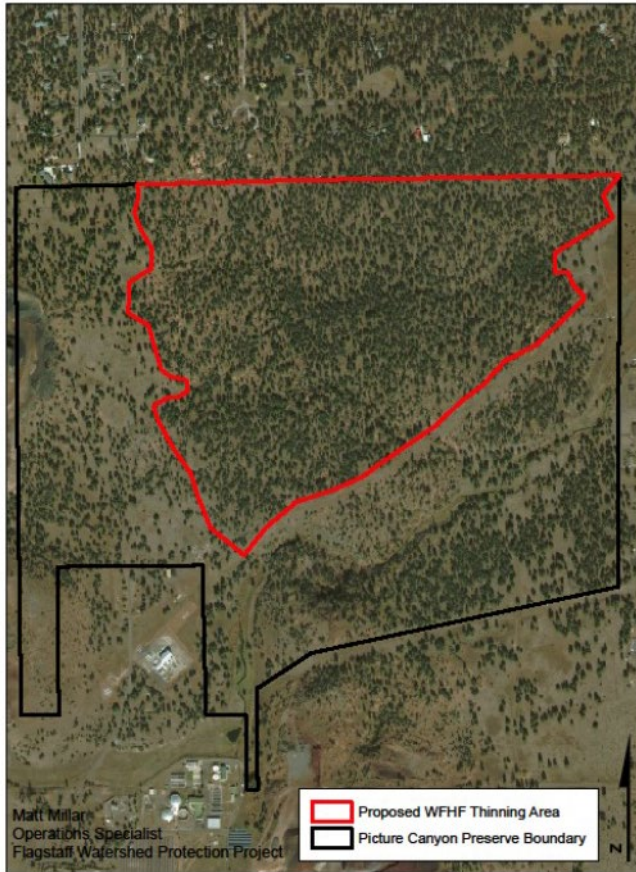
- Picture Canyon
- Thorpe Park
- Lowell Observatory
- City Parcel Assessment in Progress

## Prescribed Fire

- Observatory Mesa
- Thorpe Park
- Naval Observatory Flagstaff Station



# Ecological Thinning Picture Canyon, Thorpe Park, Lowell Obs

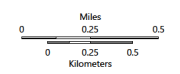




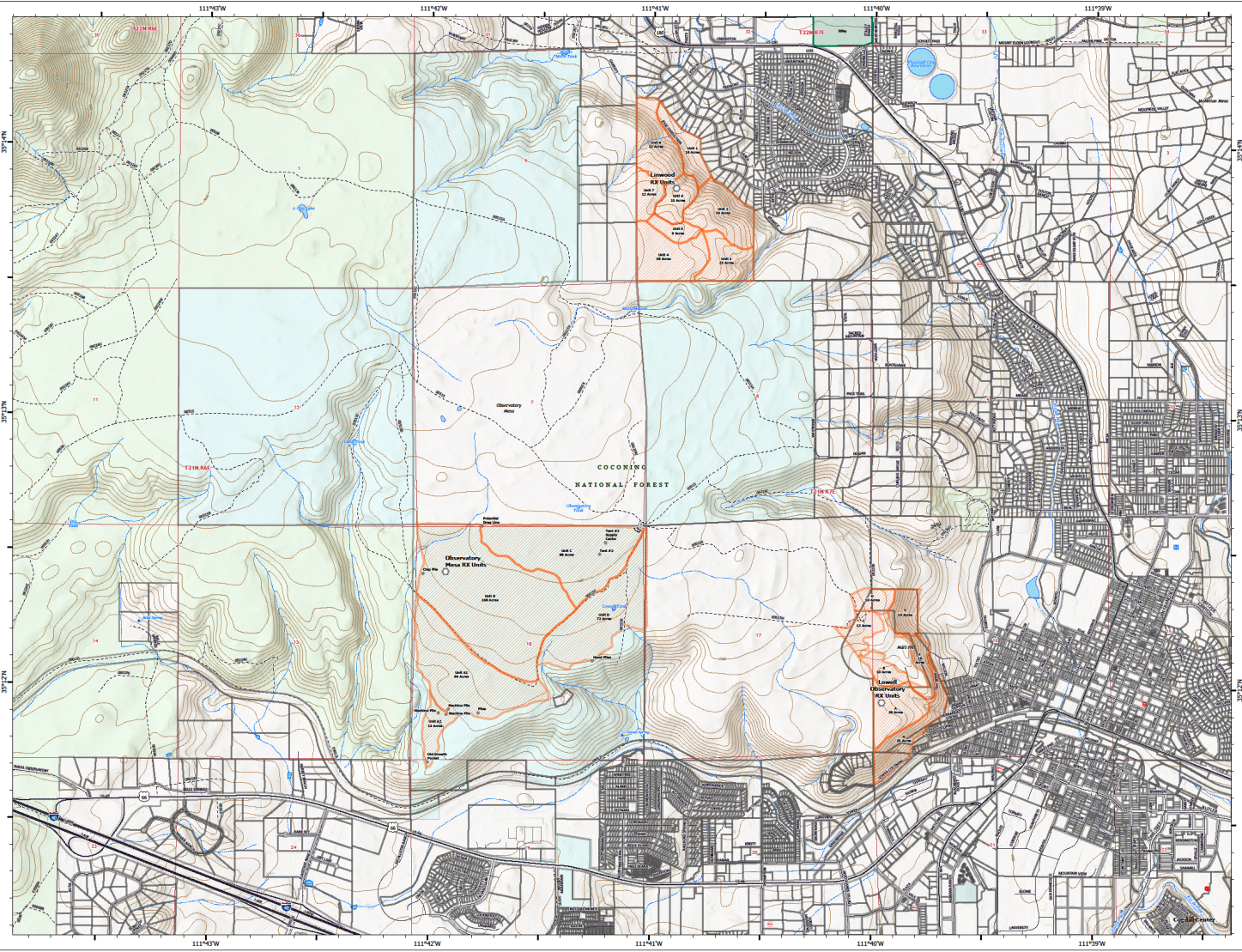
# Rx: Observatory Mesa Section 8

**OPERATIONS**  
Observatory Mesa  
TRES  
Flagstaff  
99,999 acres at Effective DateTime

- Other
- Landmark
- Completed Hand Line
- Access or Improved Road
- Hospital
- Fire Station
- Law Enforcement
- Interstate
- Highway
- Major Road
- Local Road
- Minor Road
- Other
- FS Road
- Forest Service
- Parcels of Interest
- Coconino County Parcel Data
- Local or State Parks
- Private
- State
- USFS
- Limwood Rx Units
- Lowell Rx Units
- Observatory Mesa 2021 Rx Units



1:1,000 - SWANIT2 GIS - 10/31/2021 2004  
Aerial from GIS  
North American 1983 Datum, LantLong Grid

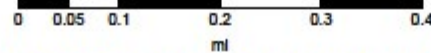




# Rx: Thorpe Park



## CoF Web Map



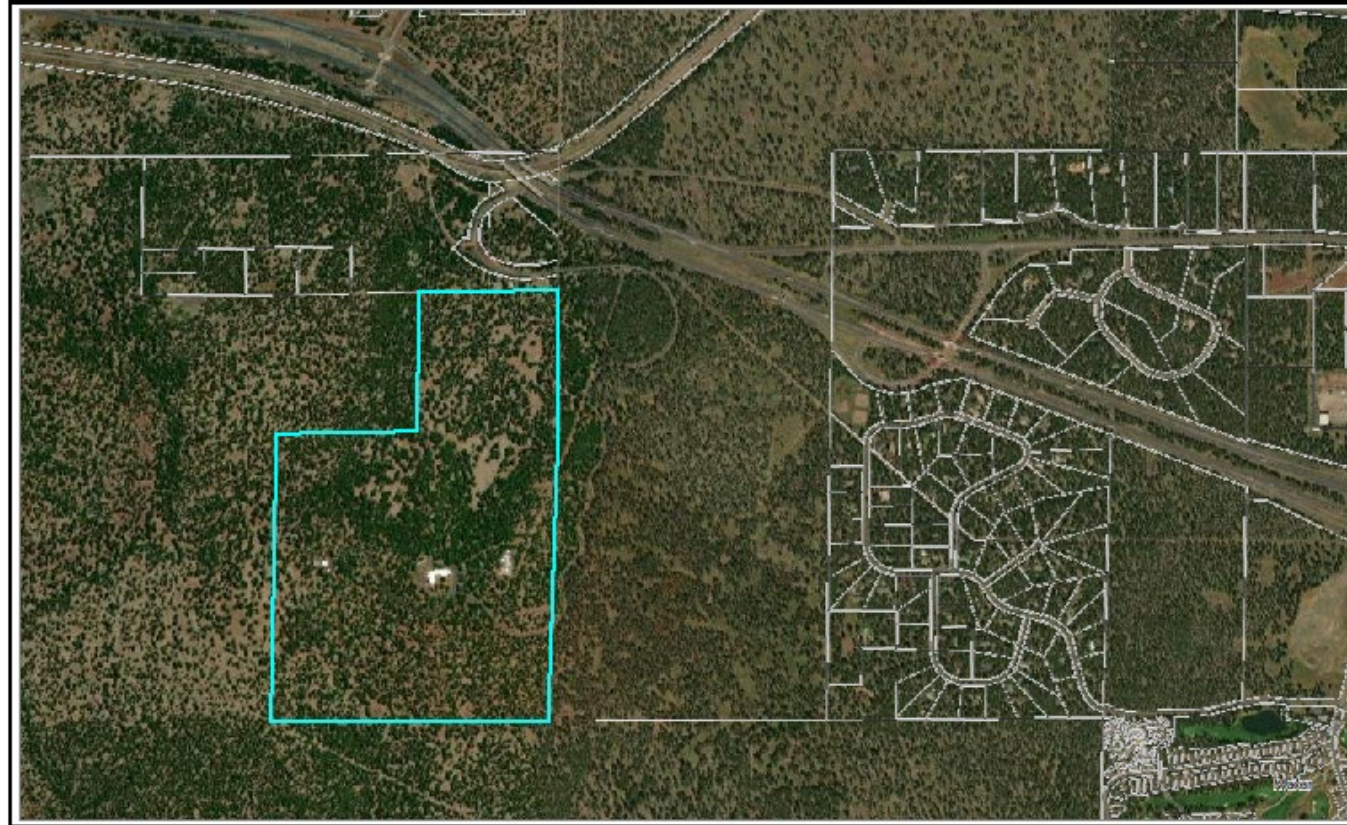
City of Flagstaff maps and data are updated on a regular basis from data obtained from various sources. The City of Flagstaff endeavors to provide accurate information, but accuracy is not guaranteed. You are strongly encouraged to obtain any information you need for a business or legal transaction from a surveyor, engineer, title company, or other licensed professional as appropriate. Information is provided subject to the express condition that you knowingly waive any and all claims for damages against the City of Flagstaff relating to use of this information.



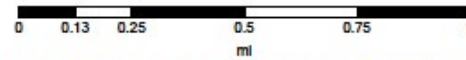
4/14/2023 2:28 PM



# Rx: NOFS



## CoF Web Map



City of Flagstaff maps and data are updated on a regular basis from data obtained from various sources. The City of Flagstaff endeavors to provide accurate information, but accuracy is not guaranteed. You are strongly encouraged to obtain any information you need for a business or legal transaction from a surveyor, engineer, title company, or other licensed professional as appropriate. Information is provided subject to the express condition that you knowingly waive any and all claims for damages against the City of Flagstaff relating to use of this information.



4/14/2023 2:31 PM



# Ongoing: Flagstaff Watershed Protection Project



- Community Wildfire Protection Plan Update
- Upper Rio de Flag
  - Flagstaff Ranger District Program of Work
    - Snowbowl Road Hand Thinning
    - Timber Contracts
  - Leroux Nepa Analysis
  - Fort Valley Experimental Forest
  - Private Land Fuel Reductions and Firewise Efforts
- Cultural Resource Survey Agreements (USFS)
- POD's Agreement (USFS)
- Prescribed Fire Training Partnerships



# Future WFM Discussions



- October 3<sup>rd</sup>: Wildland Fire Mitigation and Management Commission Report
- October 17<sup>th</sup>: NAU School of Forestry and Ecological Restoration Institute: Wildfire impacts and Adaptation Strategies

QUESTIONS?

