

# INNER BASIN WATERLINE PROJECT

## Project Partners



**Hunter**  
CONTRACTING CO.

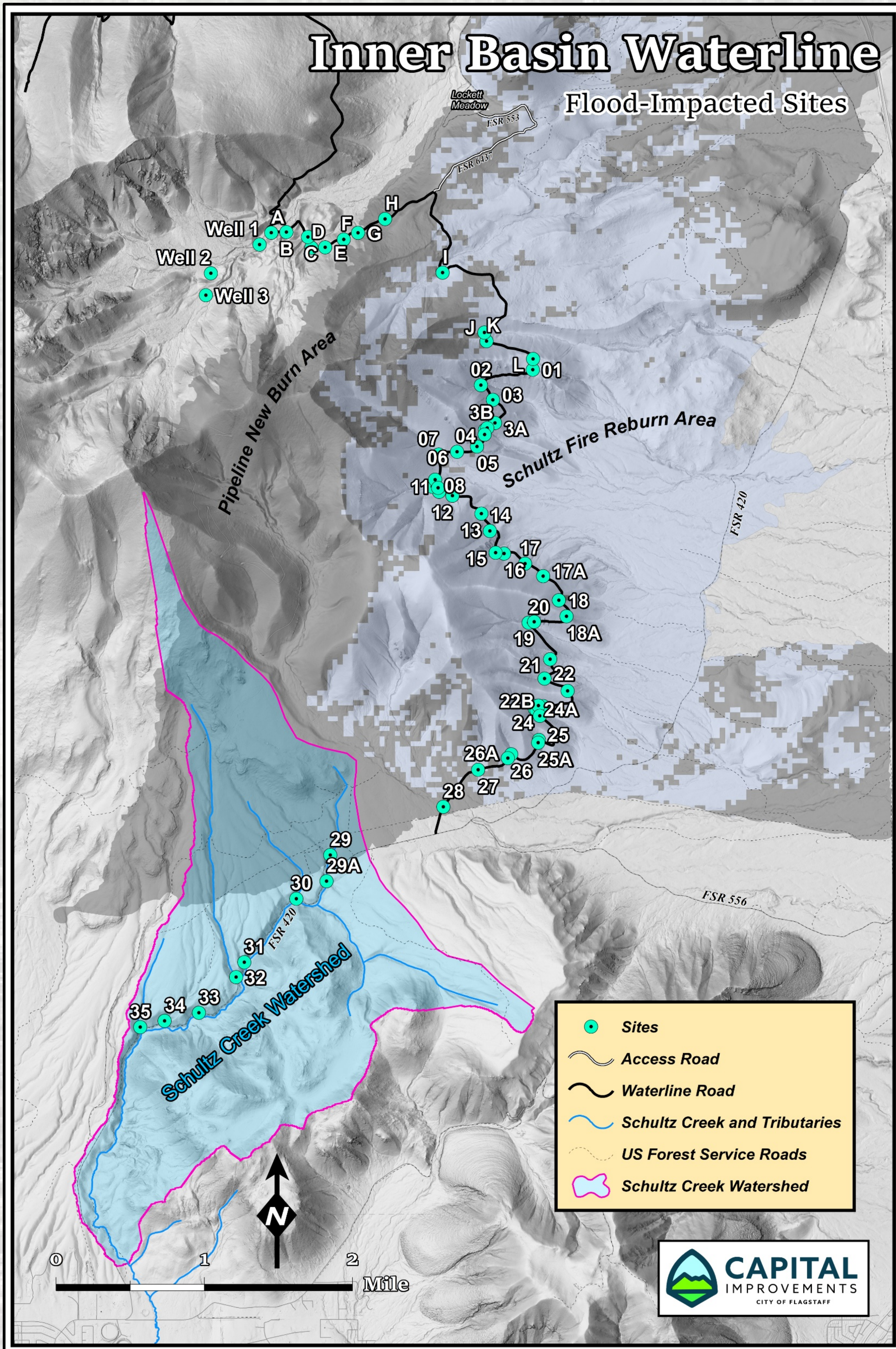
**Jacobs**

ENVIROSYSTEMS

AEROTECH MAPPING

ARIZONA SURVEYING

SWI  
Shephard & Wesnitzer, Inc.  
An ARDURRA Company



Point 30



Point 30



Point 1



Point 7



Point 1



Point 26



Point 20



Point 1

## Project Details

- Repair at **45 Points** along Schultz Pass and Waterline Roads
- Three **known breaks** in the waterline pipe
- Multiple other locations where the **pipe is compromised**
- Project extent is an elevation of 7600' to 9500', over **12-mile reach**
- **2 to 4 million gallons of water per day** being lost - this value constitutes up to 20% of Flagstaff's daily summer water supply
- These two roadways also have **critical spots which are impassable**; this project will repair access for authorized vehicles and recreationalists
- The **armored restoration repairs** will offer protection to the road and waterline in future flooding events, which most often arise from localized monsoonal storm activity



Point 22



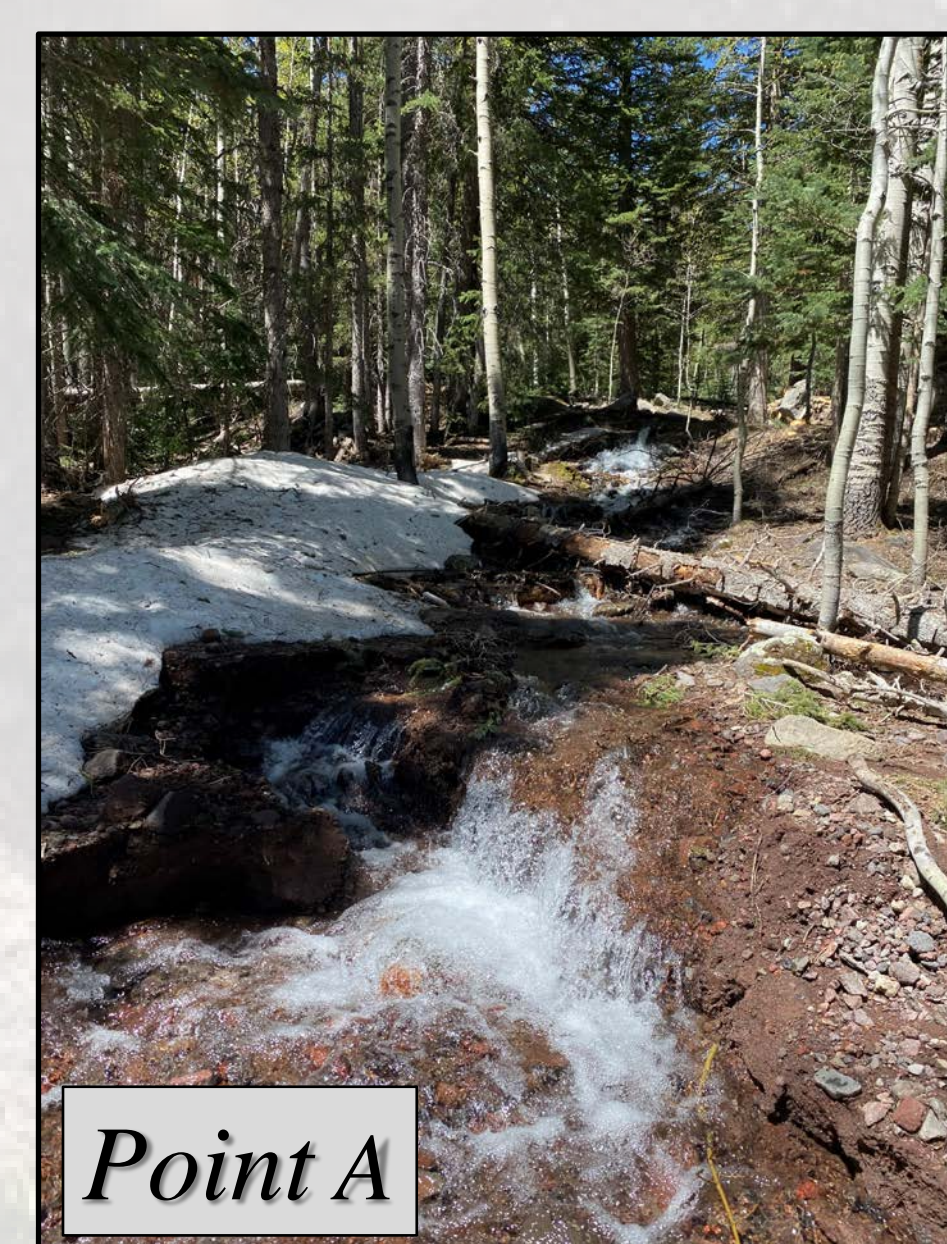
Point 9



Point 24



Tunnel // Point 19



Point A



Point 30