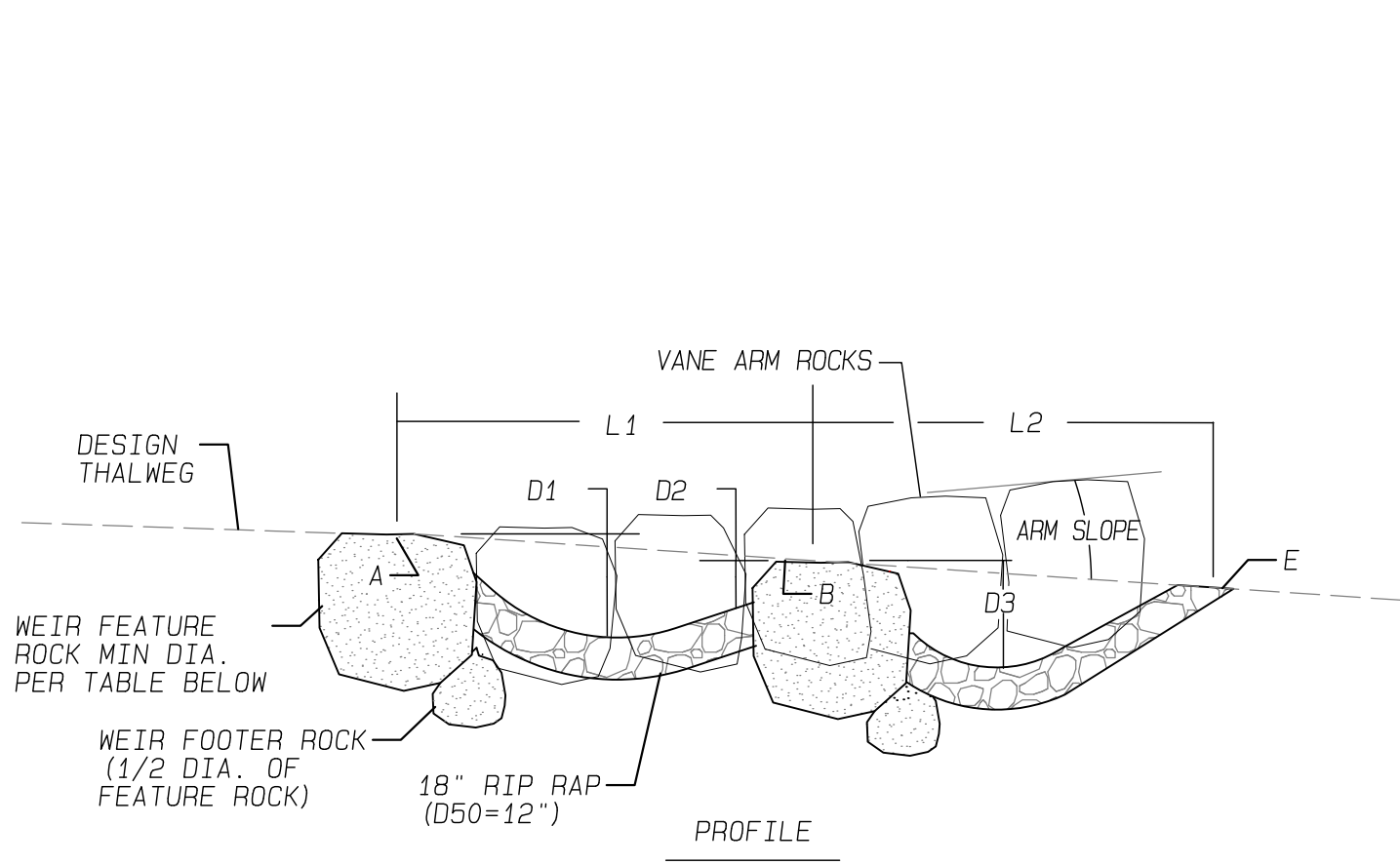
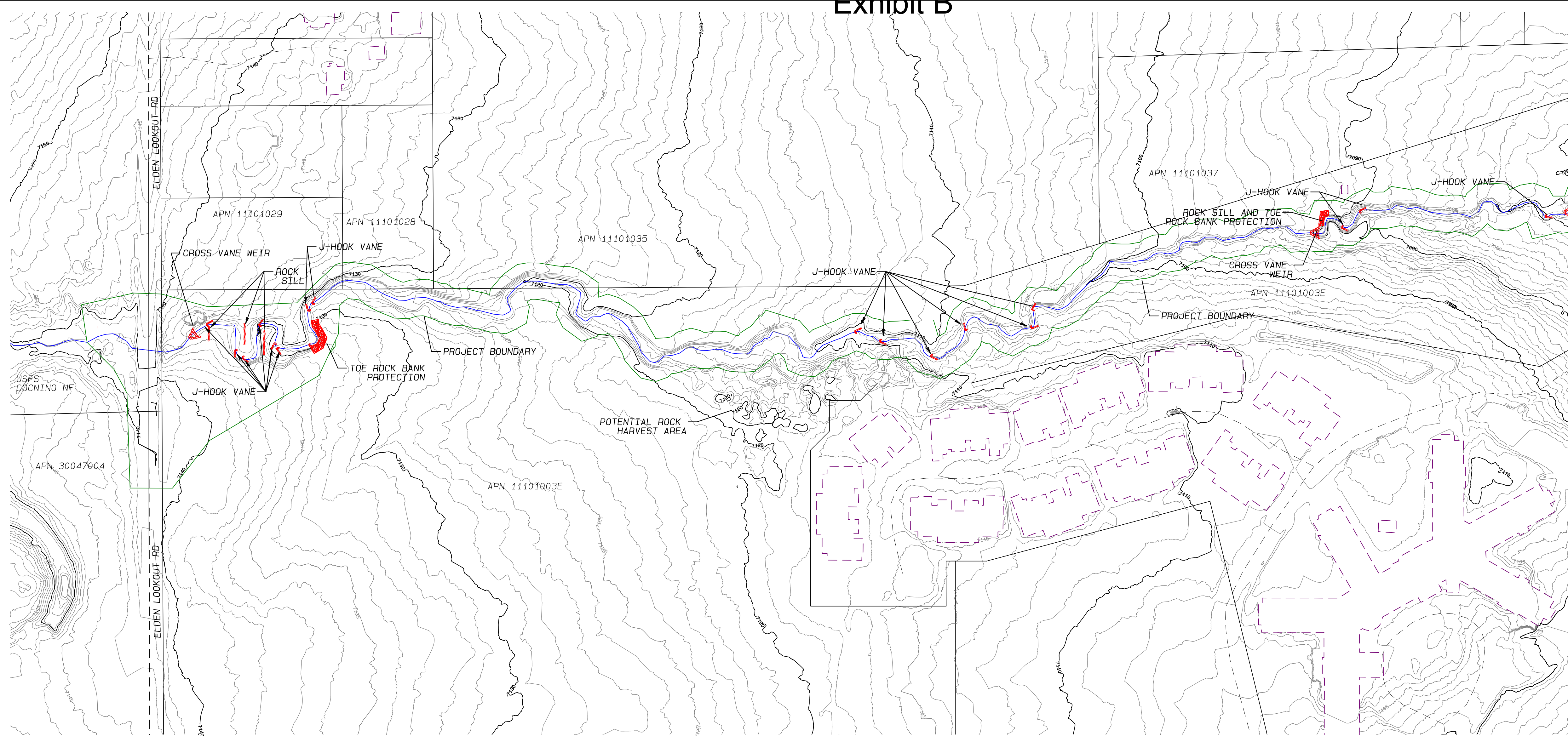
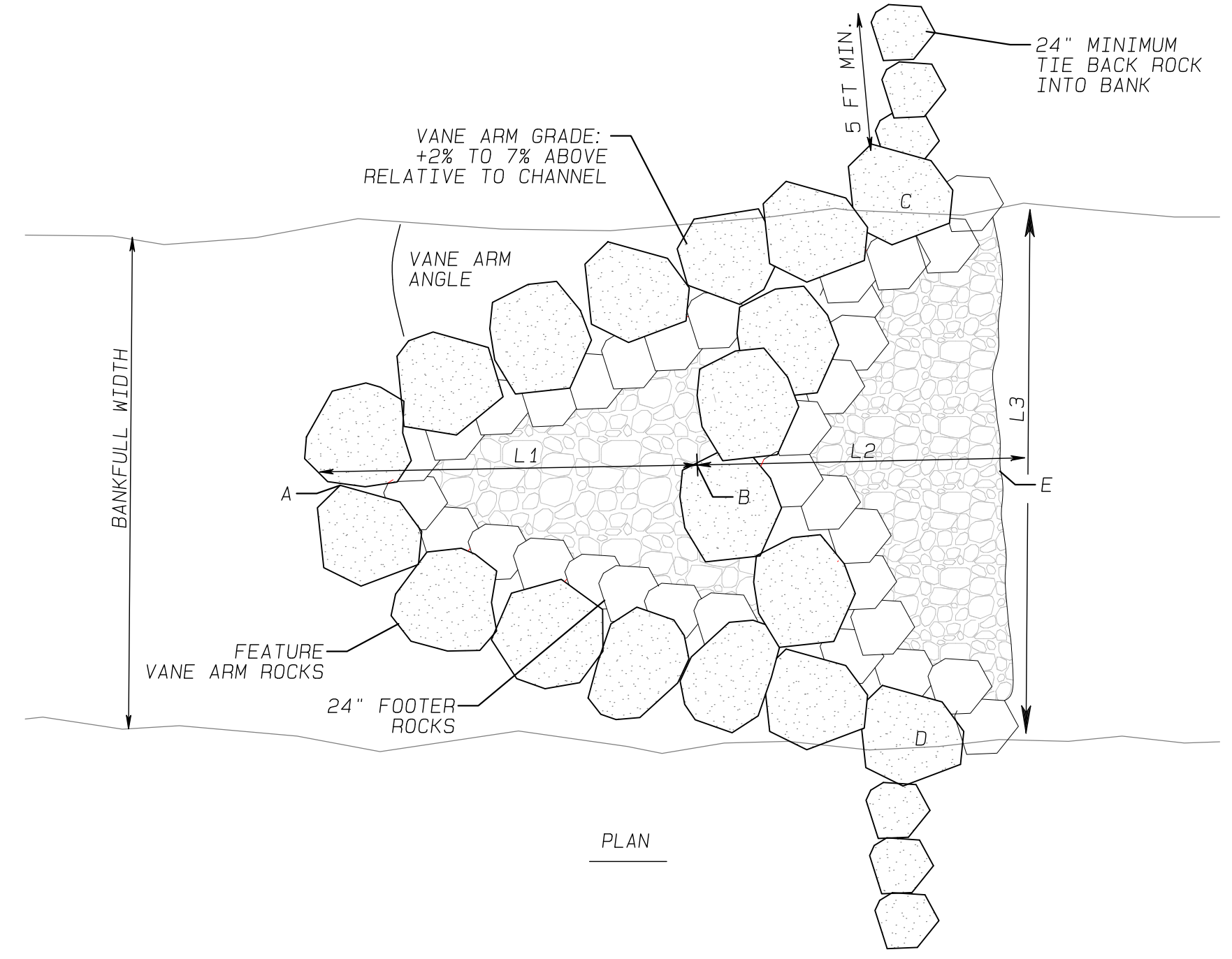


Exhibit B



(C)
TYPICAL CROSS VANE WEIR
PLAN/PROFILE
(NOT TO SCALE)



PLAN

UNAUTHORIZED CHANGES & USES
THE ENGINEER PREPARED THESE PLANS
UNDER THE ASSUMPTION THAT THE USER
WILL BE RESPONSIBLE FOR OBTAINING ALL
NECESSARY PERMITS AND APPROVALS
AND FOR VERIFYING THE ACCURACY AND
COMPLETENESS OF THESE PLANS.

DATE: 09/01/2022
DRAWING NUMBER: ---
SHEET NUMBER: 1 OF 2
NOD PROJECT NUMBER: ---

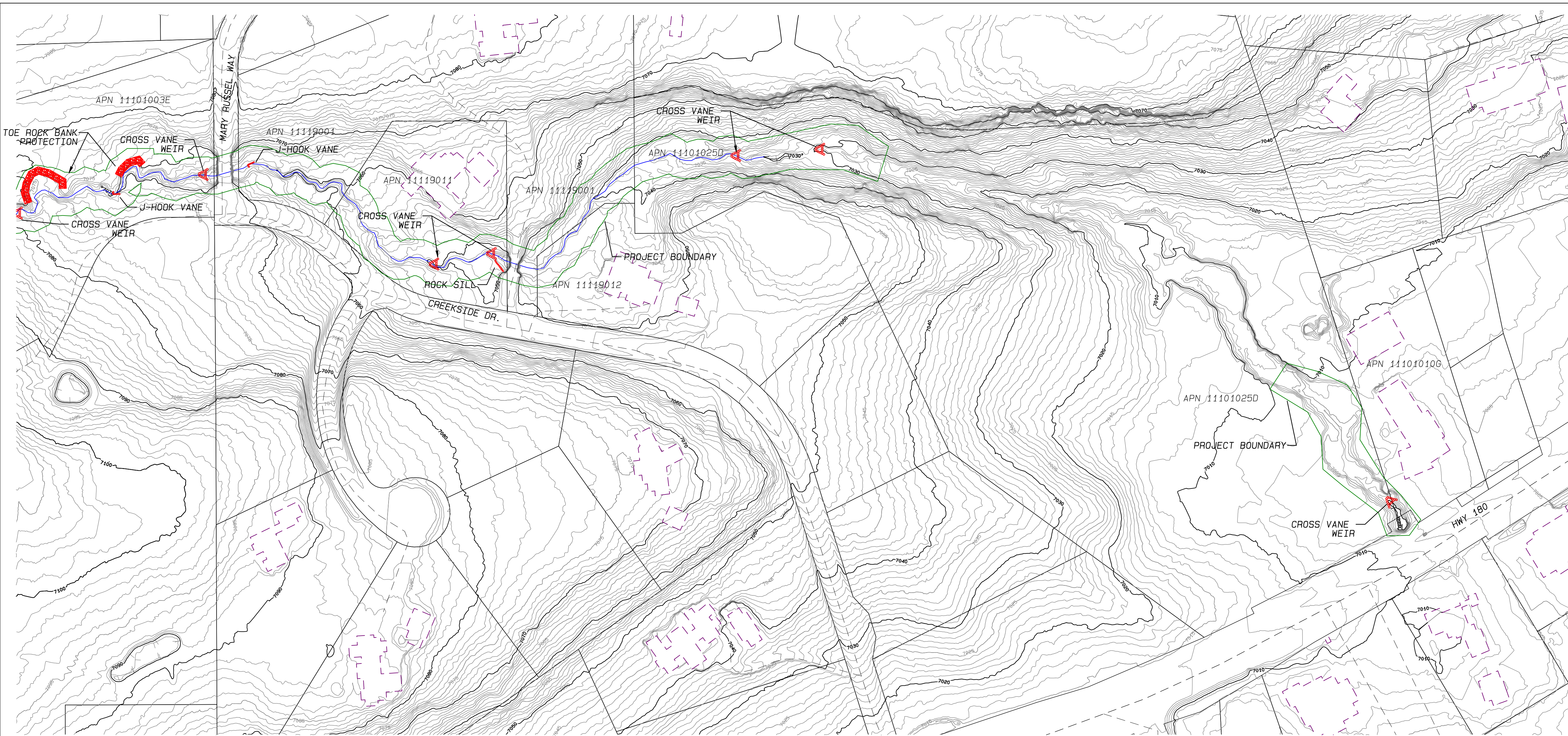
PRELIMINARY

PIPELINE FIRE - POST FIRE EMERGENCY FLOOD PREPARATION
SCHULTZ CREEK ELDEN LOOKOUT RD
TO HWY 180 STABILIZATION
CITY OF FLAGSTAFF
CONCEPT PLAN

NO.	DATE	BY	REVISION

Drawn By: JF
Designed By: JF
Reviewed By: JF

Natural Channel Design
2900 N. WEST ST
Flagstaff, Arizona 86004
(928) 774-2336



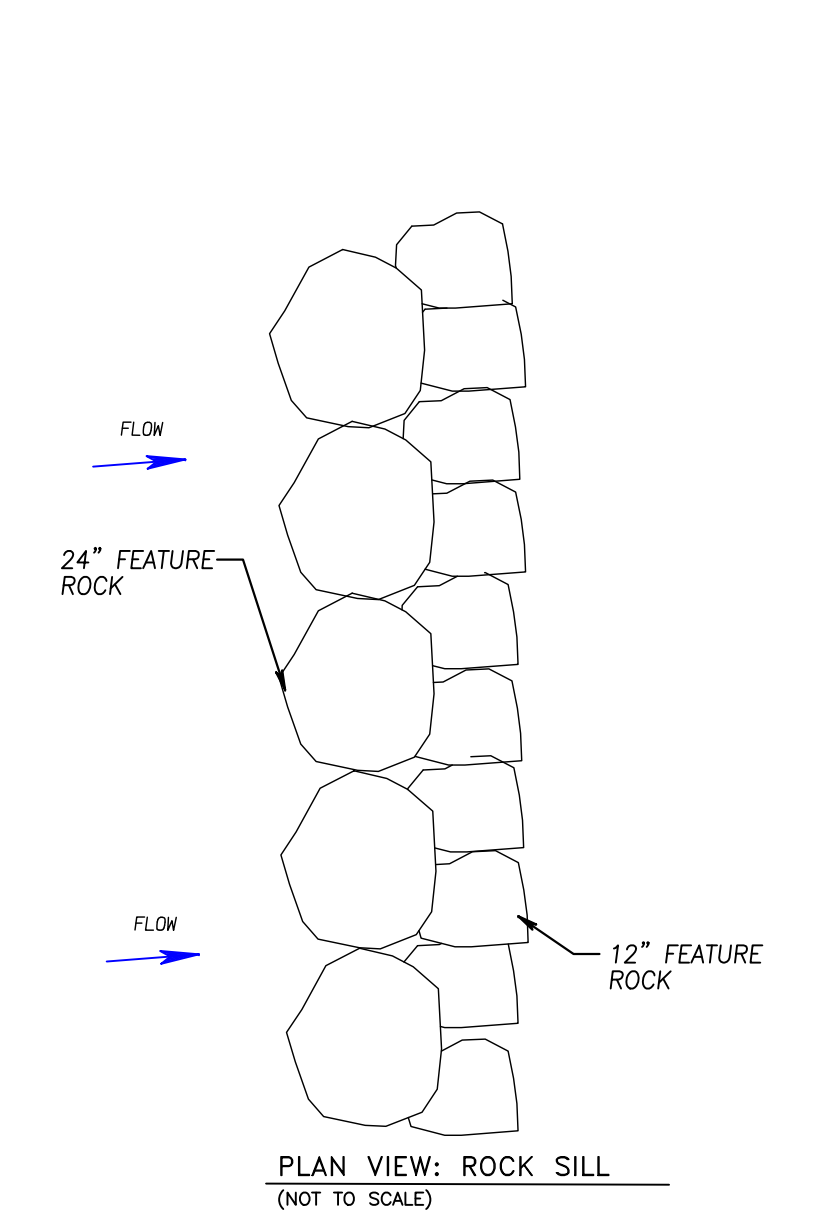
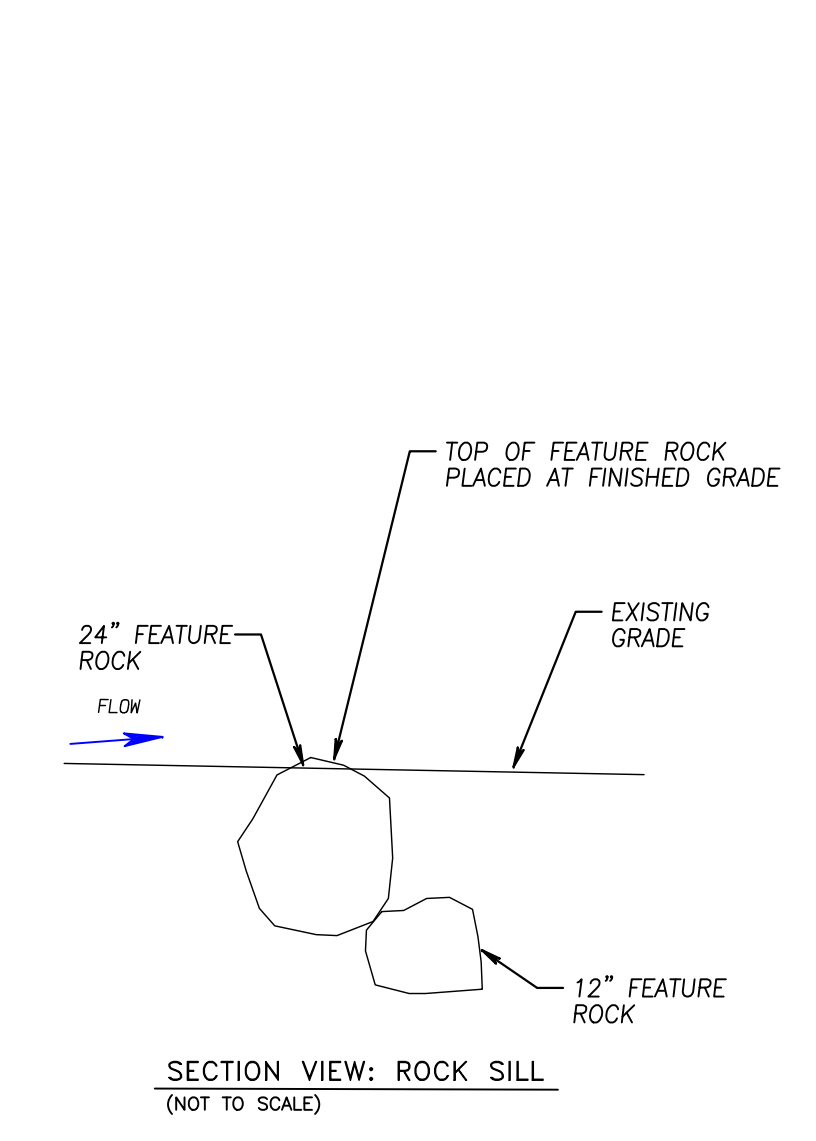
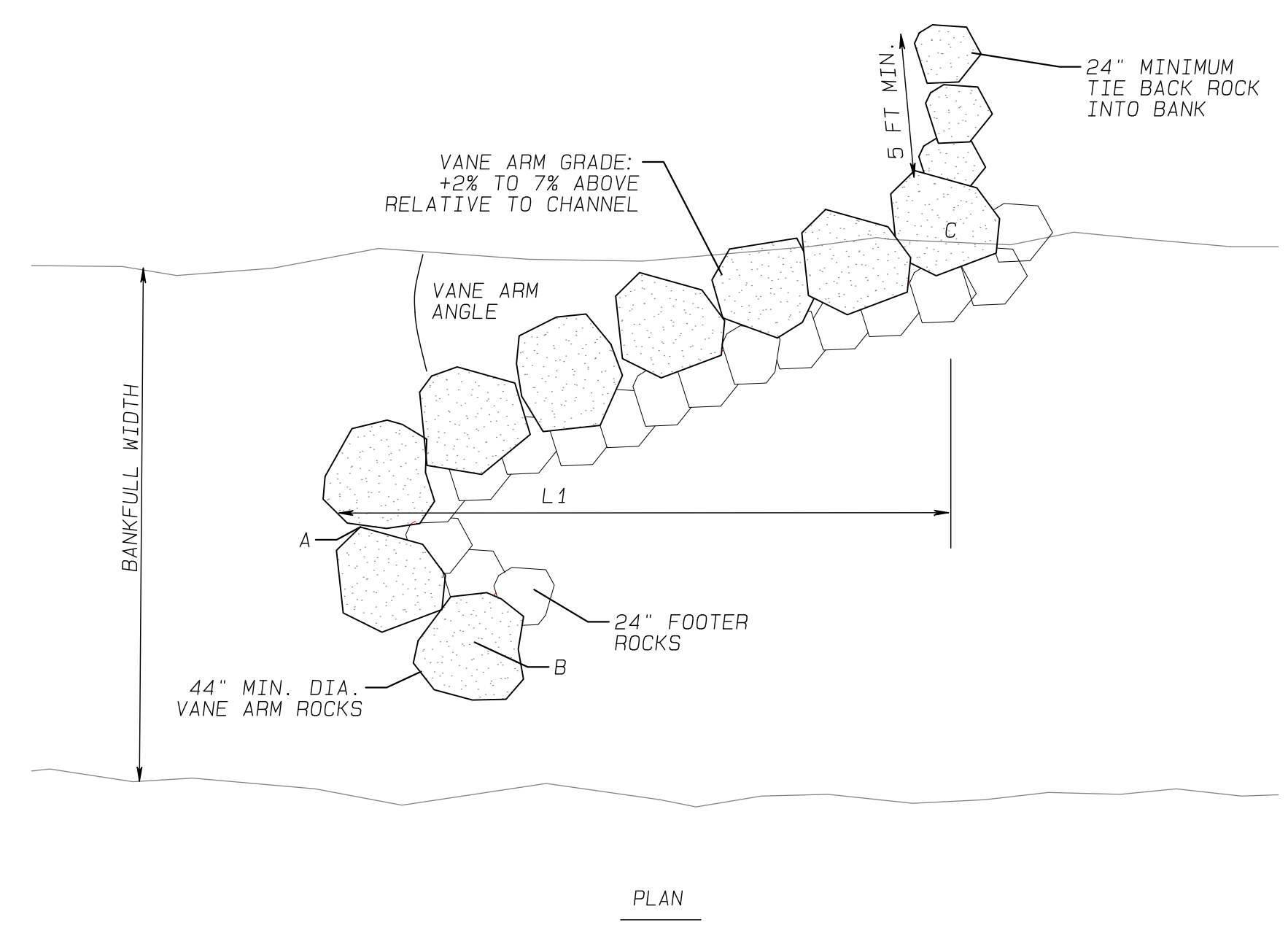
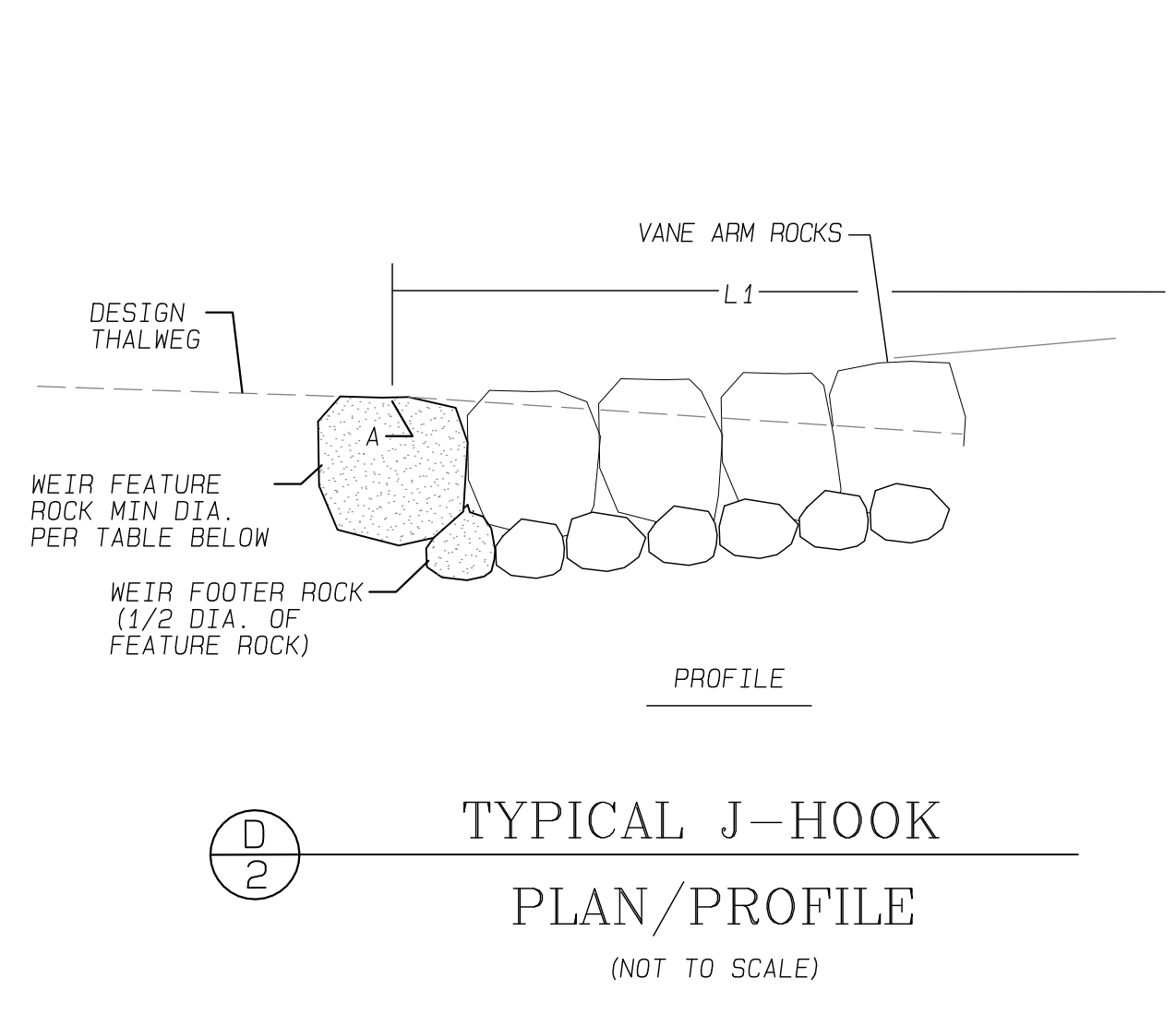
UNAUTHORIZED CHANGES & USES
 THE ENGINEER PREPARED THESE PLANS
 UNDER THE ASSUMPTIONS LISTED ON THE
 TITLE SHEET. UNAUTHORIZED CHANGES TO
 THESE PLANS MUST BE APPROVED BY THE
 ENGINEER. ANY UNAPPROVED CHANGES
 WILL BE AT THE USER'S RISK.

DATE: 08/01/2022
 NCD PROJECT NUMBER: ---
 DRAWING NUMBER: ---
 SHEET NUMBER: 2 OF 2

PRELIMINARY

PIPELINE FIRE - POST FIRE EMERGENCY FLOOD PREPARATION
 SCHULTZ CREEK ELDEN LOOKOUT RD
 TO HWY 180 STABILIZATION

CITY OF FLAGSTAFF
 CONCEPT PLAN



NO.	DATE	BY	REVISION

Drawn By: JF
 Designed By: JF
 Reviewed By: JF

Natural Channel Design
 2900 N. WEST ST
 FLAGSTAFF, ARIZONA 86004
 (928) 774-2336