



NOTES:  
 1. ALL DIMENSIONS ARE GIVEN FROM THE A.S.F. STANDARD ENGINEERING DETAILS UNLESS OTHERWISE NOTED. INFORMATION ON THE REQUIRED MODIFICATIONS, INFORMATION ON THE TYPE OF ROADWAY, THE TYPICAL WIDTHS AND PAVEMENT DEPTHS ARE PER GEOTECH REPORT.

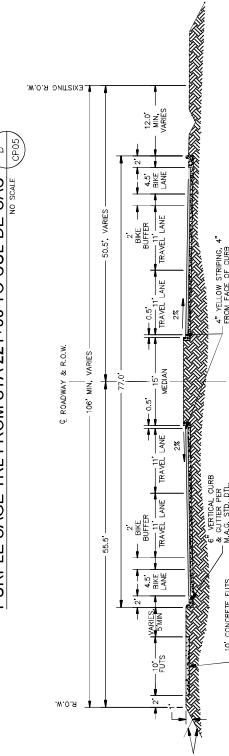
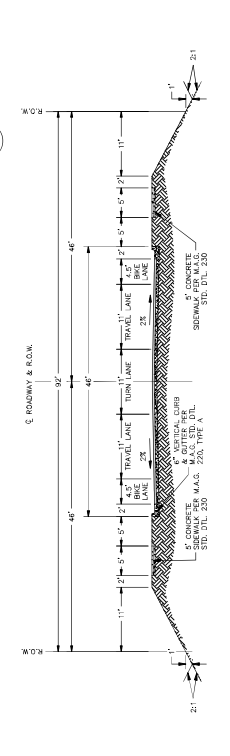
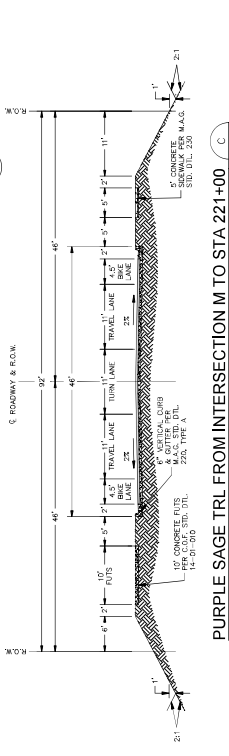
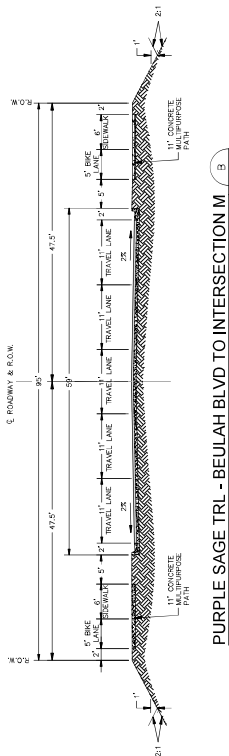
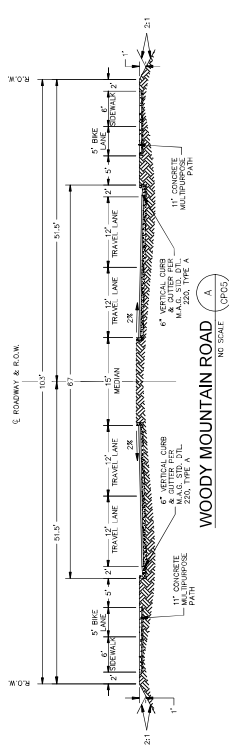
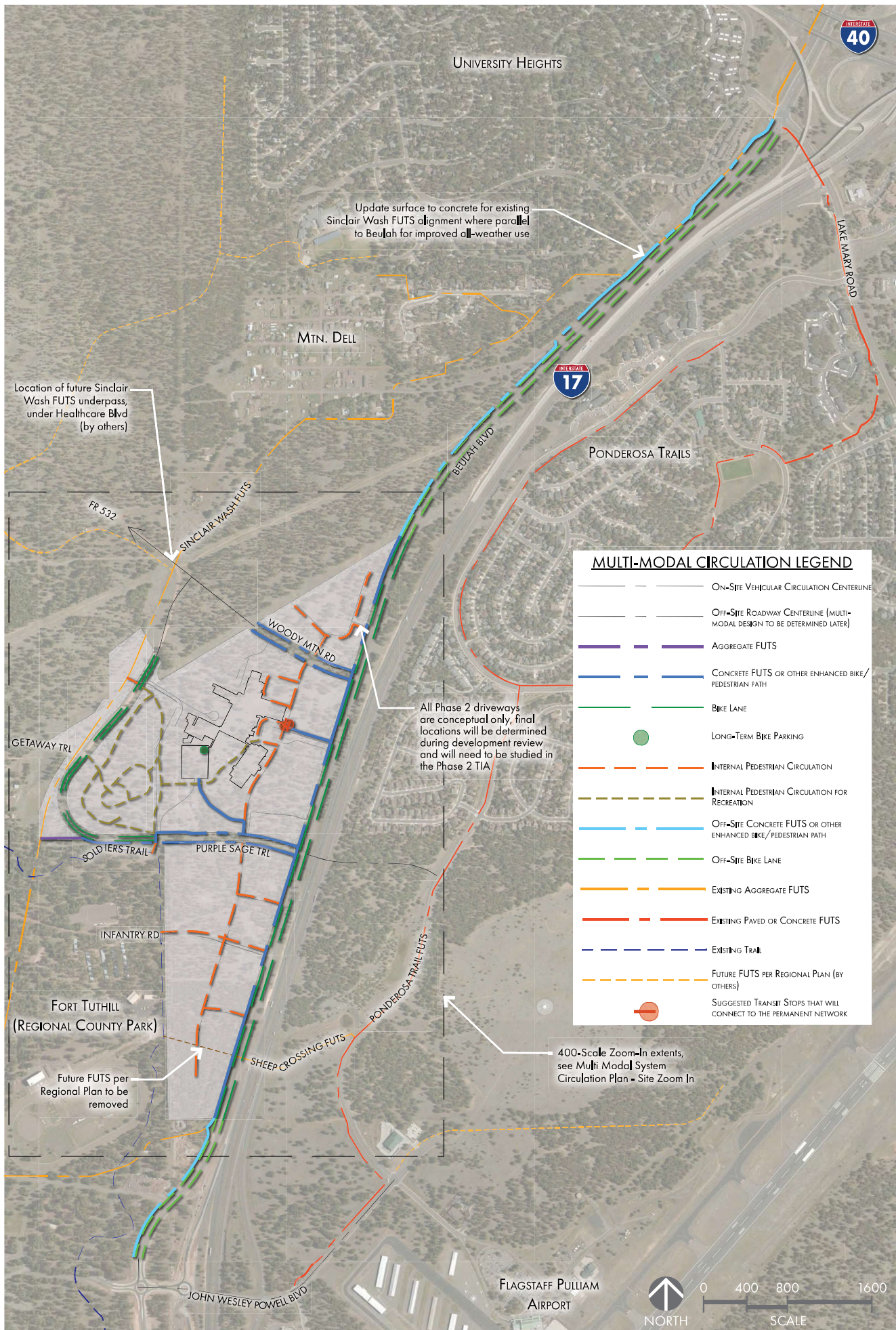


Image 17

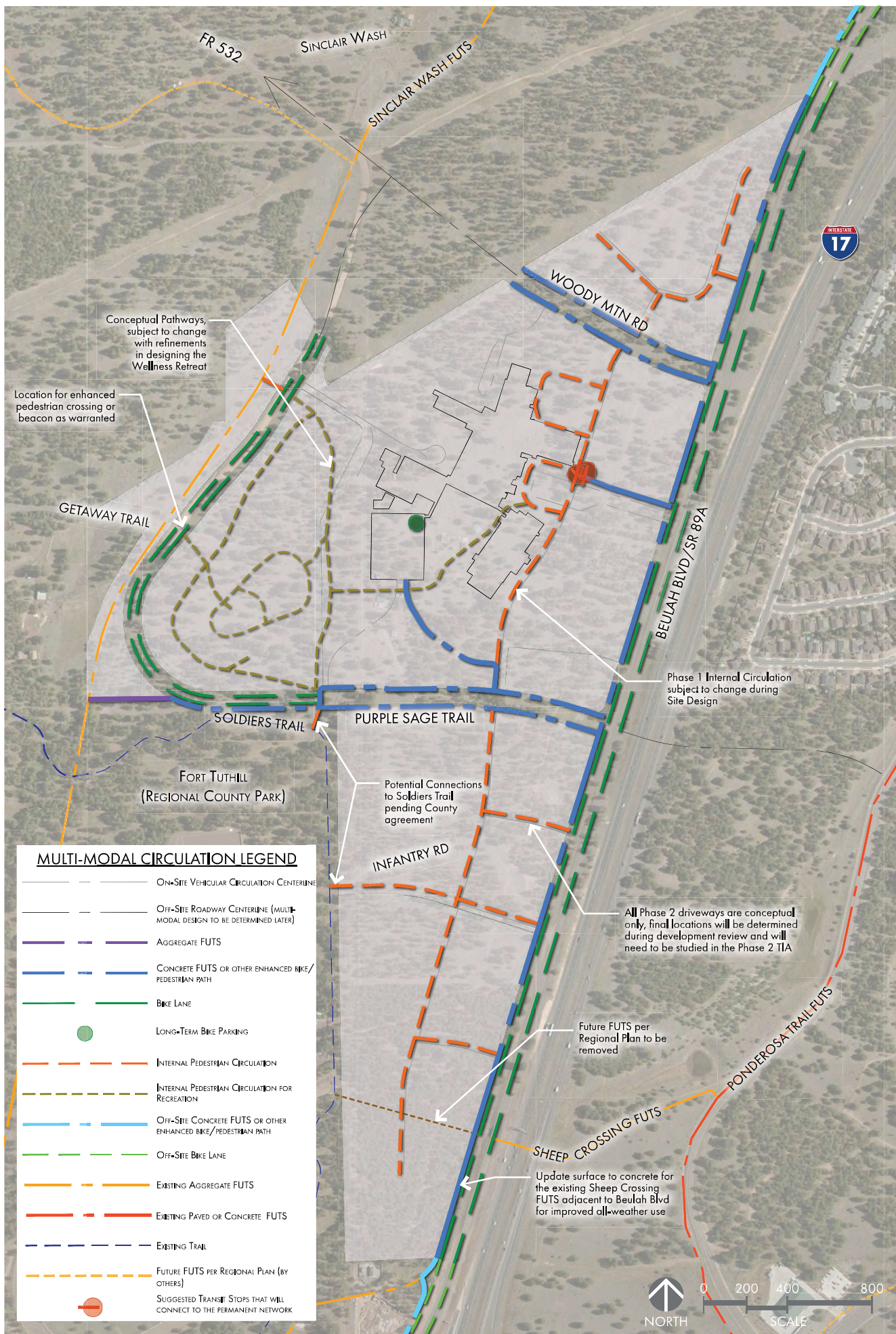
C.O.F. Project # PZ-21-00028



NAH HEALTH VILLAGE | MULTI MODAL SYSTEM CIRCULATION PLAN

03/28/2023

# Image 18



NAH HEALTH VILLAGE | MULTI-MODAL SYSTEM CIRCULATION PLAN - SITE ZOOM-IN

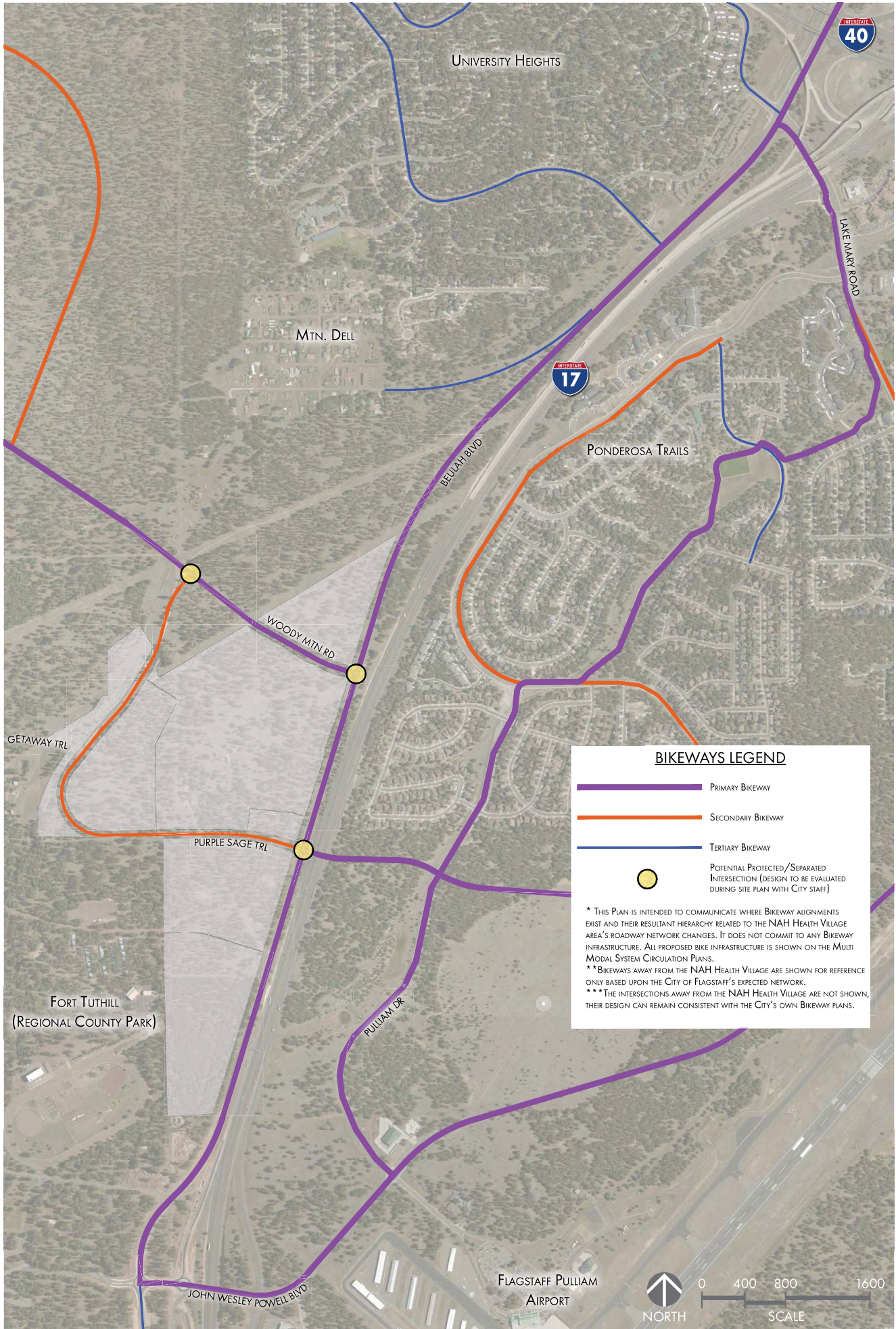
03/28/2023

# Image 19



Northern Arizona Healthcare

**NORRIS DESIGN**  
Planning | Landscape Architecture | Branding



**BIKEWAYS LEGEND**

- PRIMARY BIKEWAY
- SECONDARY BIKEWAY
- TERTIARY BIKEWAY
- POTENTIAL PROTECTED/SEPARATED INTERSECTION (DESIGN TO BE EVALUATED DURING SITE PLAN WITH CITY STAFF)

\* THIS PLAN IS INTENDED TO COMMUNICATE WHERE BIKEWAY ALIGNMENTS EXIST AND THEIR RESULTANT HIERARCHY RELATED TO THE NAH HEALTH VILLAGE AREA'S ROADWAY NETWORK CHANGES. IT DOES NOT COMMIT TO ANY BIKEWAY INFRASTRUCTURE. ALL PROPOSED BIKEWAY INFRASTRUCTURE IS SHOWN ON THE MULTI MODAL SYSTEM CIRCULATION PLANS.  
 \*\* BIKEWAYS AWAY FROM THE NAH HEALTH VILLAGE ARE SHOWN FOR REFERENCE ONLY BASED UPON THE CITY OF FLAGSTAFF'S EXPECTED NETWORK.  
 \*\*\* THE INTERSECTIONS AWAY FROM THE NAH HEALTH VILLAGE ARE NOT SHOWN, THEIR DESIGN CAN REMAIN CONSISTENT WITH THE CITY'S OWN BIKEWAY PLANS.