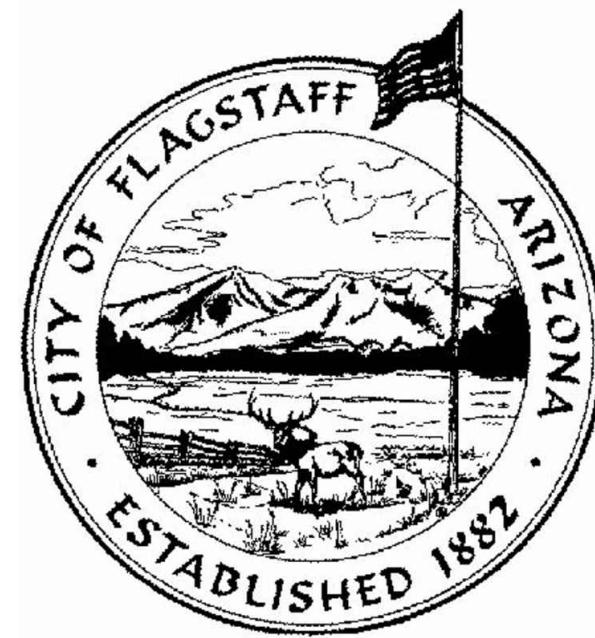


CONSTRUCTION PLANS FOR THE SEQUENCE D PHASE II-EXCAVATION PLAN AND LANDFILL DESIGN

PREPARED FOR



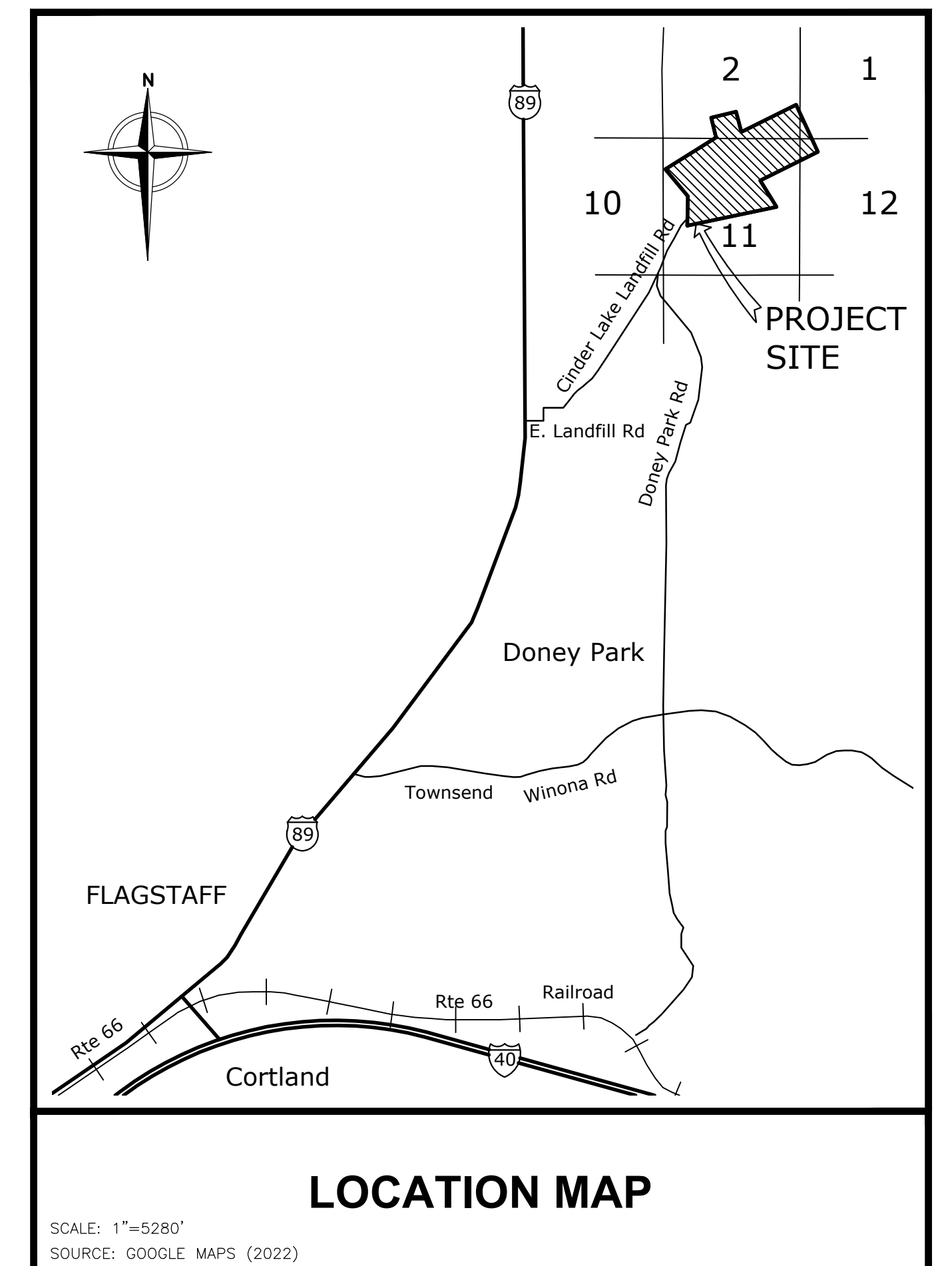
CITY OF FLAGSTAFF CINDER LAKE LANDFILL 6770 EAST LANDFILL ROAD FLAGSTAFF, ARIZONA 86004

APRIL 2023

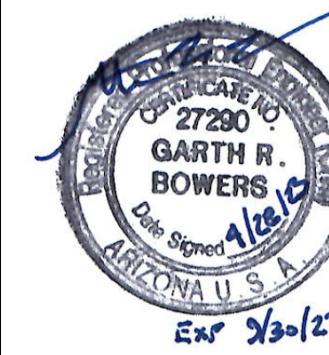
SHEET INDEX

C-001	COVER SHEET
C-002	NOTES AND ABBREVIATIONS
C-100	EXISTING SITE CONDITIONS
C-101	SUBGRADE AND LINER PLAN - CONCEPT 1
C-101A	SUBGRADE AND LINER PLAN - CONCEPT 2
C-102	TOP OF OPERATIONS LAYER - CONCEPT 1
C-102A	TOP OF OPERATIONS LAYER - CONCEPT 2
C-111	MODULE D1 SUBGRADE AND LINER PLAN
C-112	MODULE D1 TOP OF OPERATIONS LAYER PLAN
C-301	LANDFILL SECTIONS
C-501	LINER DETAILS
C-502	SUMP DETAILS
C-503	STORMWATER DETAILS
1 of 6	AERIAL TOPOGRAPHIC SURVEY, CINDER LAKE LANDFILL BY Shephard Wesnitzer, Inc. (Provided for Reference)

PORTIONS OF SECTIONS 1, 2, 11, AND 12, TOWNSHIP 22 NORTH,
RANGE 8 EAST, GILA AND SALT RIVER BASE LINE AND MERIDIAN,
COCONINO COUNTY, ARIZONA



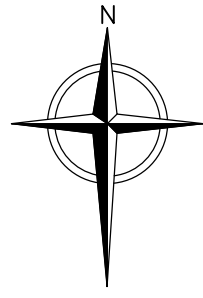
REV	REVISION DESCRIPTION	DATE



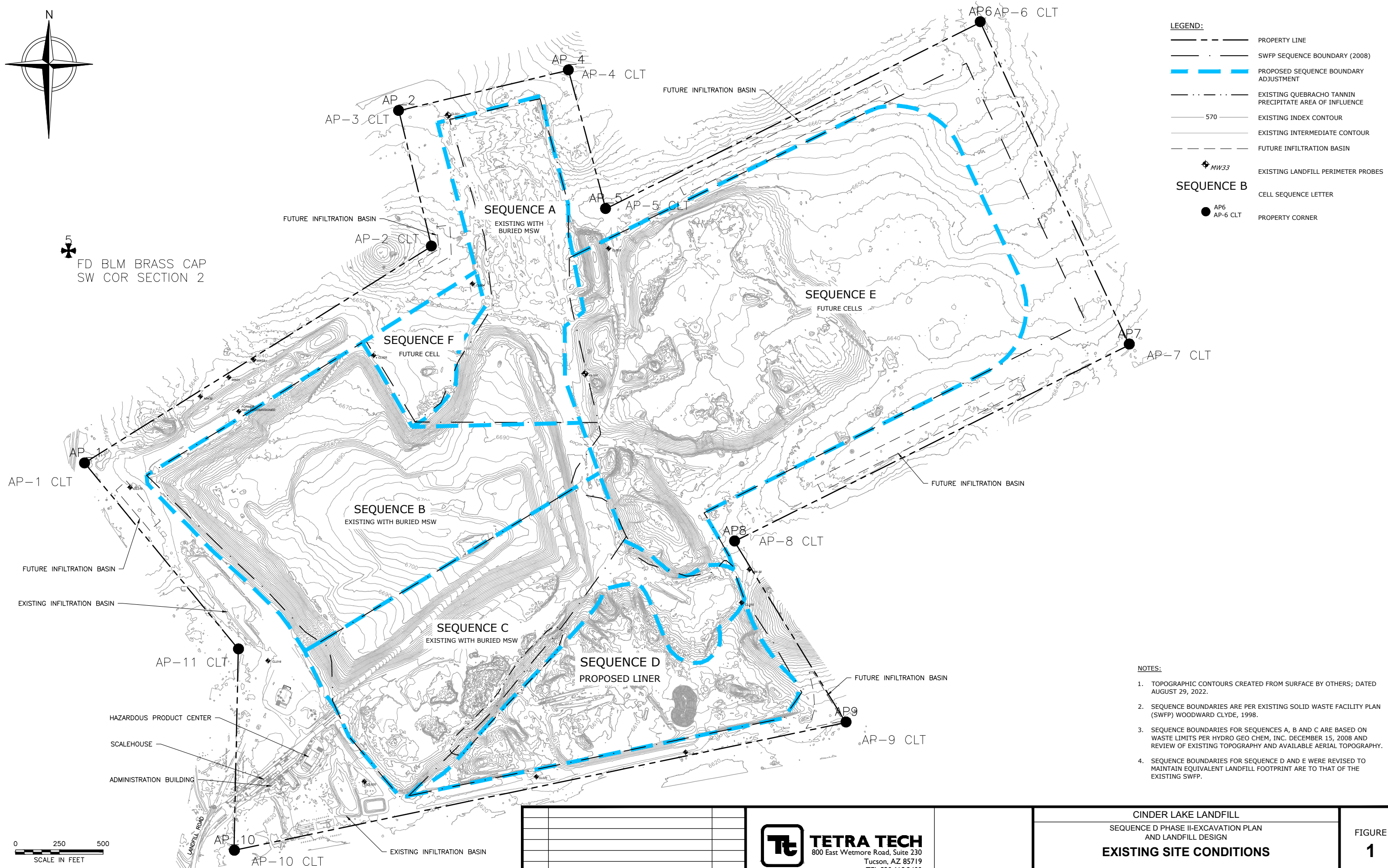
CINDER LAKE LANDFILL SEQUENCE D PHASE II-EXCAVATION PLAN AND LANDFILL DESIGN COVER SHEET		
DESIGNED BY: MDC	CHECKED BY: RTL	DATE: APR. 2023
DRAWN BY: MDC	APPROVED BY: GRB	FILE: 220005-C-001_COVER SHEET-BIND.DWG

SHEET
C-001

PRELIMINARY - NOT FOR CONSTRUCTION

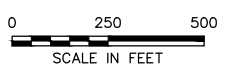


5
FD BLM BRASS CAP
SW COR SECTION 2



- LEGEND:**
- — — — — PROPERTY LINE
 - — — — — SWFP SEQUENCE BOUNDARY (2008)
 - — — — — PROPOSED SEQUENCE BOUNDARY ADJUSTMENT
 - — — — — EXISTING QUEBRACHO TANNIN PRECIPITATE AREA OF INFLUENCE
 - 570 — EXISTING INDEX CONTOUR
 - — — — — EXISTING INTERMEDIATE CONTOUR
 - — — — — FUTURE INFILTRATION BASIN
 - ◆ MW33 EXISTING LANDFILL PERIMETER PROBES
- SEQUENCE B**
- — — — — CELL SEQUENCE LETTER
 - AP6 AP-6 CLT PROPERTY CORNER

- NOTES:**
1. TOPOGRAPHIC CONTOURS CREATED FROM SURFACE BY OTHERS; DATED AUGUST 29, 2022.
 2. SEQUENCE BOUNDARIES ARE PER EXISTING SOLID WASTE FACILITY PLAN (SWFP) WOODWARD CLYDE, 1998.
 3. SEQUENCE BOUNDARIES FOR SEQUENCES A, B AND C ARE BASED ON WASTE LIMITS PER HYDRO GEO CHEM, INC. DECEMBER 15, 2008 AND REVIEW OF EXISTING TOPOGRAPHY AND AVAILABLE AERIAL TOPOGRAPHY.
 4. SEQUENCE BOUNDARIES FOR SEQUENCE D AND E WERE REVISED TO MAINTAIN EQUIVALENT LANDFILL FOOTPRINT ARE TO THAT OF THE EXISTING SWFP.



REV	REVISION DESCRIPTION	DATE

TETRA TECH
 800 East Wetmore Road, Suite 230
 Tucson, AZ 85719
 TEL 520.618.2400

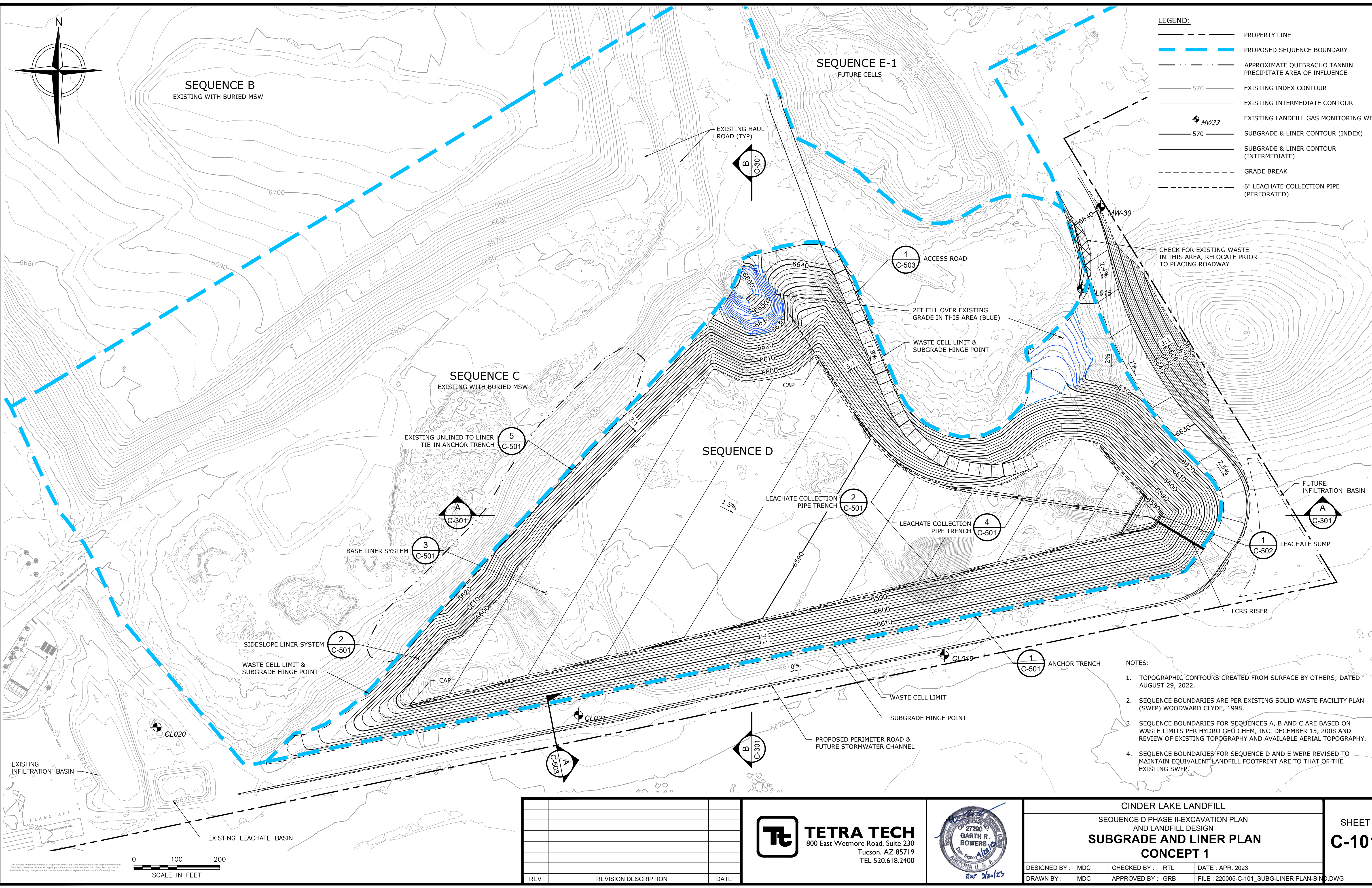
CINDER LAKE LANDFILL
 SEQUENCE D PHASE II-EXCAVATION PLAN
 AND LANDFILL DESIGN
EXISTING SITE CONDITIONS

DESIGNED BY: MDC CHECKED BY: RTL DATE: APR. 2023
 DRAWN BY: MDC APPROVED BY: GRB FILE: 220005-C-100_EXIST_COND-BIND.DWG

FIGURE
1

File: \\t\local\csl\proj\proj\PROJECTS\CINDER LAKE\220005 - CELL D PHASE II - Project Drawings\Bound Drawings\BDM Drawings - 012423\220005-C-100_EXIST_COND-BIND.DWG Layout: Figure 1 - User: matt.taheri Apr 26, 2023 - 3053m

PRELIMINARY - NOT FOR CONSTRUCTION



LEGEND:

	PROPERTY LINE
	PROPOSED SEQUENCE BOUNDARY
	APPROXIMATE QUEBRACHO TANNIN PRECIPITATE AREA OF INFLUENCE
	EXISTING INDEX CONTOUR
	EXISTING INTERMEDIATE CONTOUR
	EXISTING LANDFILL GAS MONITORING WELL
	SUBGRADE & LINER CONTOUR (INDEX)
	SUBGRADE & LINER CONTOUR (INTERMEDIATE)
	GRADE BREAK
	6" LEACHATE COLLECTION PIPE (PERFORMED)

- NOTES:**
1. TOPOGRAPHIC CONTOURS CREATED FROM SURFACE BY OTHERS; DATED AUGUST 29, 2022.
 2. SEQUENCE BOUNDARIES ARE PER EXISTING SOLID WASTE FACILITY PLAN (SWFP) WOODWARD CLYDE, 1998.
 3. SEQUENCE BOUNDARIES FOR SEQUENCES A, B AND C ARE BASED ON WASTE LIMITS PER HYDRO GEO CHEM, INC. DECEMBER 15, 2008 AND REVIEW OF EXISTING TOPOGRAPHY AND AVAILABLE AERIAL TOPOGRAPHY.
 4. SEQUENCE BOUNDARIES FOR SEQUENCE D AND E WERE REVISED TO MAINTAIN EQUIVALENT LANDFILL FOOTPRINT ARE TO THAT OF THE EXISTING SWFP.

REV	REVISION DESCRIPTION	DATE

TETRA TECH
 800 East Wetmore Road, Suite 230
 Tucson, AZ 85719
 TEL 520.618.2400



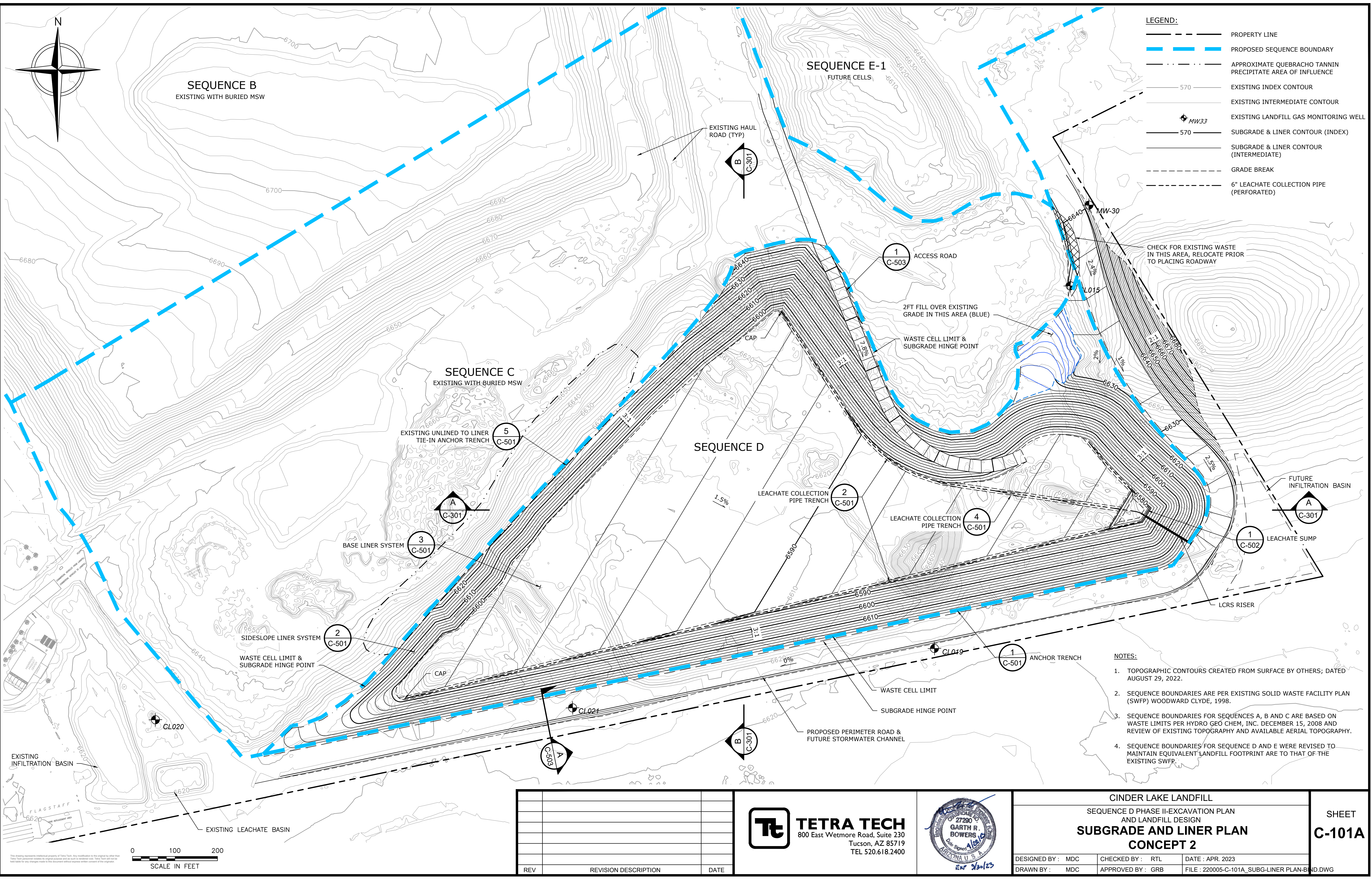
CINDER LAKE LANDFILL
 SEQUENCE D PHASE II-EXCAVATION PLAN
 AND LANDFILL DESIGN
SUBGRADE AND LINER PLAN
CONCEPT 1

DESIGNED BY: MDC CHECKED BY: RTL DATE: APR. 2023
 DRAWN BY: MDC APPROVED BY: GRB FILE: 220005-C-101_SUBG-LINER-PLAN-BIN.DWG

SHEET
C-101

PRELIMINARY - NOT FOR CONSTRUCTION

File: \\uswest01\csl\proj\220005\CINDER LAKE\220005 - CELL D PHASE II - Project\Drawings\Board\Drawings\2022\04-29-2022\C-101_SUBG-LINER-PLAN-BIN.DWG Date: 04/29/2022 3:05pm



LEGEND:

	PROPERTY LINE
	PROPOSED SEQUENCE BOUNDARY
	APPROXIMATE QUEBRACHO TANNIN PRECIPITATE AREA OF INFLUENCE
	EXISTING INDEX CONTOUR
	EXISTING INTERMEDIATE CONTOUR
	EXISTING LANDFILL GAS MONITORING WELL
	SUBGRADE & LINER CONTOUR (INDEX)
	SUBGRADE & LINER CONTOUR (INTERMEDIATE)
	GRADE BREAK
	6" LEACHATE COLLECTION PIPE (PERFORMED)

- NOTES:**
1. TOPOGRAPHIC CONTOURS CREATED FROM SURFACE BY OTHERS; DATED AUGUST 29, 2022.
 2. SEQUENCE BOUNDARIES ARE PER EXISTING SOLID WASTE FACILITY PLAN (SWFP) WOODWARD CLYDE, 1998.
 3. SEQUENCE BOUNDARIES FOR SEQUENCES A, B AND C ARE BASED ON WASTE LIMITS PER HYDRO GEO CHEM, INC. DECEMBER 15, 2008 AND REVIEW OF EXISTING TOPOGRAPHY AND AVAILABLE AERIAL TOPOGRAPHY.
 4. SEQUENCE BOUNDARIES FOR SEQUENCE D AND E WERE REVISED TO MAINTAIN EQUIVALENT LANDFILL FOOTPRINT ARE TO THAT OF THE EXISTING SWFP.

File: \\m:\tech\proj\220005\CINDER LAKE\220005-CELL D PHASE II-Excavation\Drawings\ROM Drawings - 012423\220005-CELL D PHASE II-Excavation\LINER PLAN-BIND.DWG User: maulhewls Apr 28, 2023 - 1:06pm

PRELIMINARY - NOT FOR CONSTRUCTION

REV	REVISION DESCRIPTION	DATE

TETRA TECH
 800 East Wetmore Road, Suite 230
 Tucson, AZ 85719
 TEL 520.618.2400

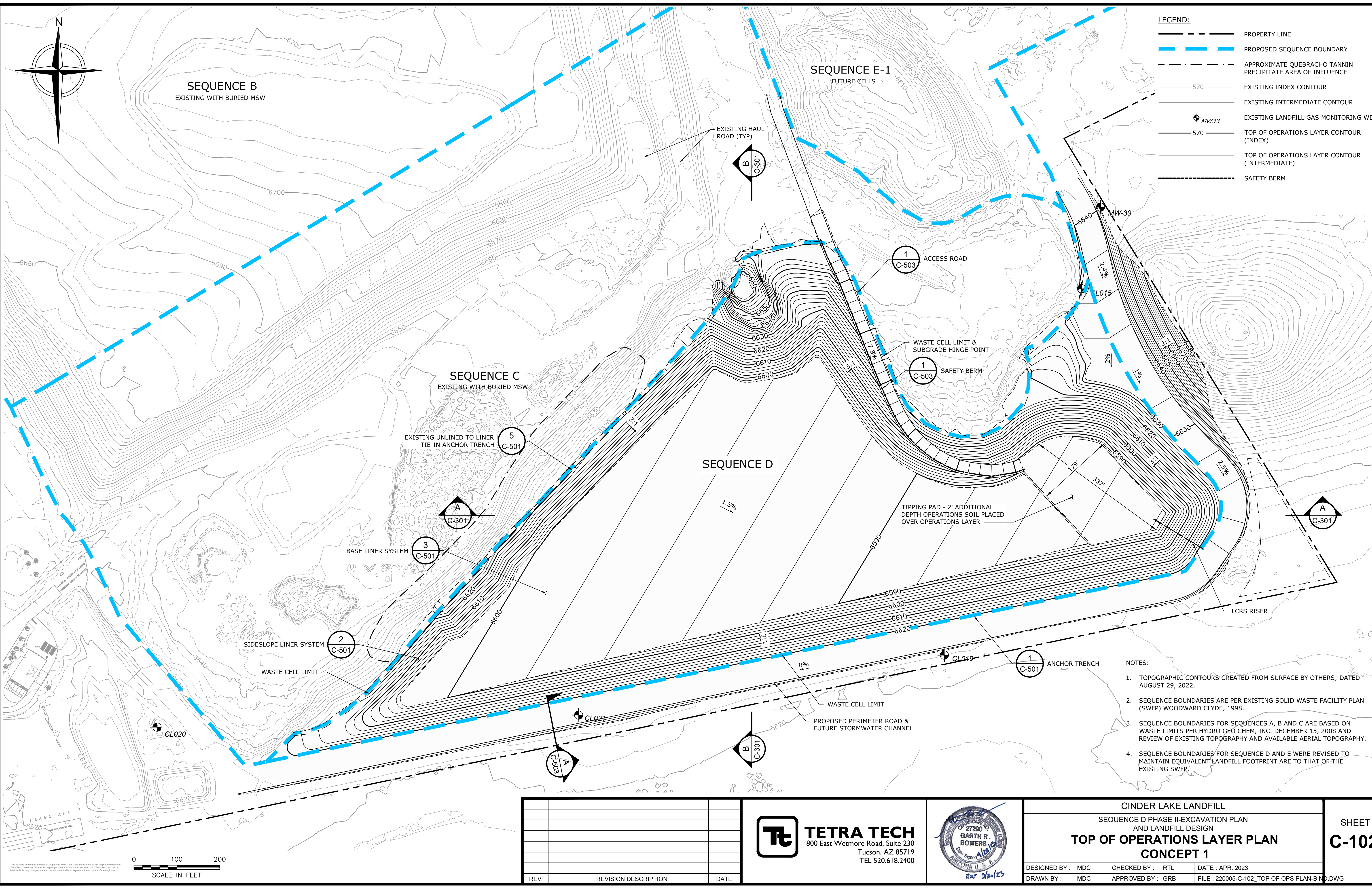
GARTH R. BOWERS
 Licensed Professional Engineer
 State of Arizona
 License No. 27200

CINDER LAKE LANDFILL
 SEQUENCE D PHASE II-EXCAVATION PLAN
 AND LANDFILL DESIGN
SUBGRADE AND LINER PLAN
CONCEPT 2

DESIGNED BY: MDC	CHECKED BY: RTL	DATE: APR. 2023
DRAWN BY: MDC	APPROVED BY: GRB	FILE: 220005-C-101A.SUBG-LINER PLAN-B.DWG

SHEET
C-101A





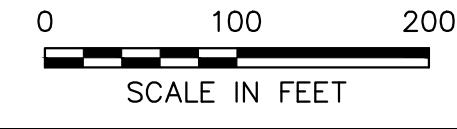
LEGEND:

	PROPERTY LINE
	PROPOSED SEQUENCE BOUNDARY
	APPROXIMATE QUEBRACHO TANNIN PRECIPITATE AREA OF INFLUENCE
	570 EXISTING INDEX CONTOUR
	EXISTING INTERMEDIATE CONTOUR
	EXISTING LANDFILL GAS MONITORING WELL
	570 TOP OF OPERATIONS LAYER CONTOUR (INDEX)
	TOP OF OPERATIONS LAYER CONTOUR (INTERMEDIATE)
	SAFETY BERM

- NOTES:**
- TOPOGRAPHIC CONTOURS CREATED FROM SURFACE BY OTHERS; DATED AUGUST 29, 2022.
 - SEQUENCE BOUNDARIES ARE PER EXISTING SOLID WASTE FACILITY PLAN (SWFP) WOODWARD CLYDE, 1998.
 - SEQUENCE BOUNDARIES FOR SEQUENCES A, B AND C ARE BASED ON WASTE LIMITS PER HYDRO GEO CHEM, INC. DECEMBER 15, 2008 AND REVIEW OF EXISTING TOPOGRAPHY AND AVAILABLE AERIAL TOPOGRAPHY.
 - SEQUENCE BOUNDARIES FOR SEQUENCE D AND E WERE REVISED TO MAINTAIN EQUIVALENT LANDFILL FOOTPRINT ARE TO THAT OF THE EXISTING SWFP.

File: \\mchad\cvs\22005\PROJECTS\CINDER LAKE\220005 - CELL D - PHASE II - Project Drawings\Bldg Drawings\C-102_TOP OF OPS PLAN-BLDG.DWG - Layout - C-102 - User: mchad\mchad - Apr 26, 2023 - 3:06pm
 This drawing represents intellectual property of Tetra Tech. Any reproduction is the subject of other laws. Tetra Tech government entities its original purpose and no such to be retained. Tetra Tech will not be responsible for any changes made to this document without express written consent of the originator.

PRELIMINARY - NOT FOR CONSTRUCTION



REV	REVISION DESCRIPTION	DATE

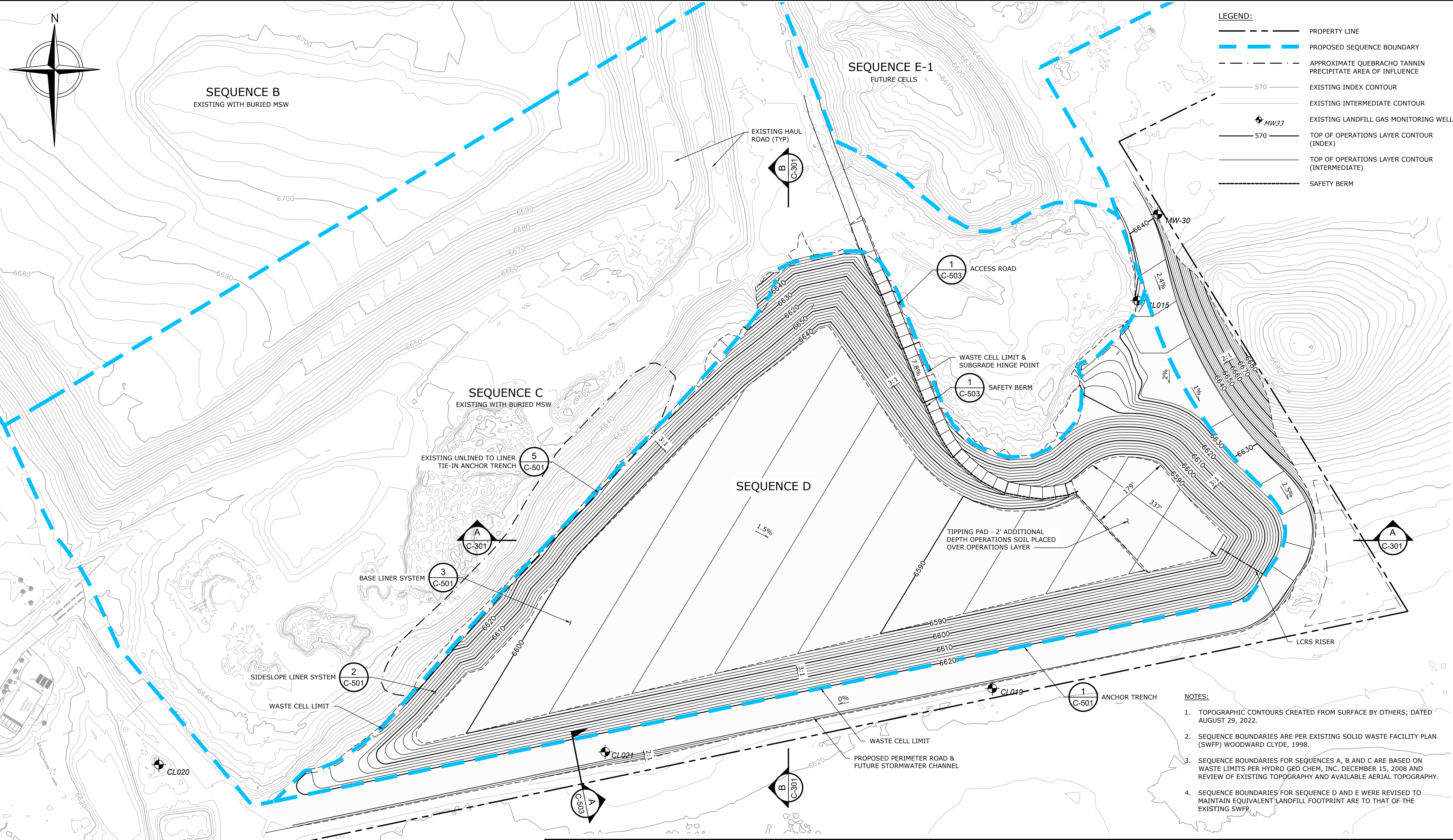
TETRA TECH
 800 East Wetmore Road, Suite 230
 Tucson, AZ 85719
 TEL 520.618.2400



CINDER LAKE LANDFILL
 SEQUENCE D PHASE II-EXCAVATION PLAN
 AND LANDFILL DESIGN
TOP OF OPERATIONS LAYER PLAN
CONCEPT 1

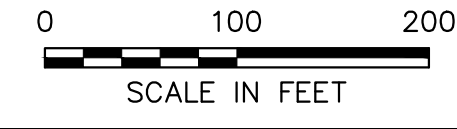
DESIGNED BY: MDC CHECKED BY: RTL DATE: APR. 2023
 DRAWN BY: MDC APPROVED BY: GRB FILE: 220005-C-102_TOP OF OPS PLAN-BLDG.DWG

SHEET
C-102



- LEGEND:**
- — — — — PROPERTY LINE
 - — — — — PROPOSED SEQUENCE BOUNDARY
 - - - - - APPROXIMATE QUEBRACHO TANNIN PRECIPITATE AREA OF INFLUENCE
 - 570 — EXISTING INDEX CONTOUR
 - — — — — EXISTING INTERMEDIATE CONTOUR
 - ⊕ MW33 EXISTING LANDFILL GAS MONITORING WELL
 - 570 — TOP OF OPERATIONS LAYER CONTOUR (INDEX)
 - — — — — TOP OF OPERATIONS LAYER CONTOUR (INTERMEDIATE)
 - — — — — SAFETY BERM

- NOTES:**
1. TOPOGRAPHIC CONTOURS CREATED FROM SURFACE BY OTHERS; DATED AUGUST 29, 2022.
 2. SEQUENCE BOUNDARIES ARE PER EXISTING SOLID WASTE FACILITY PLAN (SWFP) WOODWARD CLYDE, 1998.
 3. SEQUENCE BOUNDARIES FOR SEQUENCES A, B AND C ARE BASED ON WASTE LIMITS PER HYDRO GEO CHEM, INC. DECEMBER 15, 2008 AND REVIEW OF EXISTING TOPOGRAPHY AND AVAILABLE AERIAL TOPOGRAPHY.
 4. SEQUENCE BOUNDARIES FOR SEQUENCE D AND E WERE REVISED TO MAINTAIN EQUIVALENT LANDFILL FOOTPRINT ARE TO THAT OF THE EXISTING SWFP.



REV	REVISION DESCRIPTION	DATE

TETRA TECH
 800 East Wetmore Road, Suite 230
 Tucson, AZ 85719
 TEL 520.618.2400



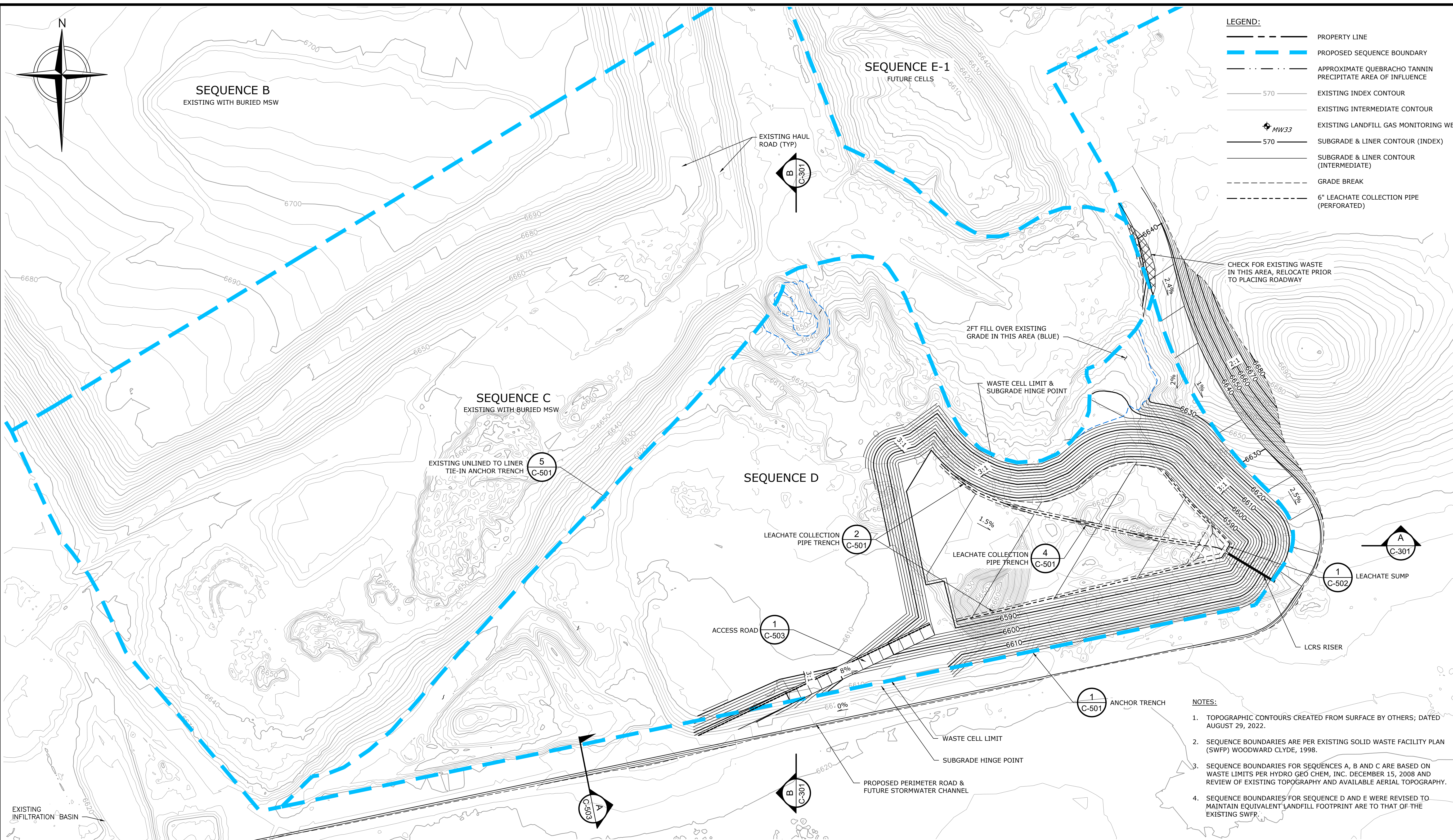
CINDER LAKE LANDFILL
 SEQUENCE D PHASE II-EXCAVATION PLAN
 AND LANDFILL DESIGN
TOP OF OPERATIONS LAYER PLAN
CONCEPT 2

DESIGNED BY: MDC CHECKED BY: RTL DATE: APR. 2023
 DRAWN BY: MDC APPROVED BY: GRB FILE: 220005-C-102A_TOP OF OPS PLAN-B.DWG

SHEET
C-102A

PRELIMINARY - NOT FOR CONSTRUCTION

File: \\mchad\my\2020\PROJECTS\CINDER LAKE\220005 - CELL D - PHASE II - Excavation - Drawings\04M Drawings - 012423\220005-C-102A_02.dwg User: makulic Apr 26, 2023 - 3:07pm

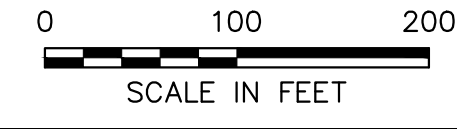


LEGEND:

	PROPERTY LINE
	PROPOSED SEQUENCE BOUNDARY
	APPROXIMATE QUEBRACHO TANNIN PRECIPITATE AREA OF INFLUENCE
	EXISTING INDEX CONTOUR
	EXISTING INTERMEDIATE CONTOUR
	EXISTING LANDFILL GAS MONITORING WELL
	SUBGRADE & LINER CONTOUR (INDEX)
	SUBGRADE & LINER CONTOUR (INTERMEDIATE)
	GRADE BREAK
	6" LEACHATE COLLECTION PIPE (PERFORATED)

- NOTES:**
- TOPOGRAPHIC CONTOURS CREATED FROM SURFACE BY OTHERS; DATED AUGUST 29, 2022.
 - SEQUENCE BOUNDARIES ARE PER EXISTING SOLID WASTE FACILITY PLAN (SWFP) WOODWARD CLYDE, 1998.
 - SEQUENCE BOUNDARIES FOR SEQUENCES A, B AND C ARE BASED ON WASTE LIMITS PER HYDRO GEO CHEM, INC. DECEMBER 15, 2008 AND REVIEW OF EXISTING TOPOGRAPHY AND AVAILABLE AERIAL TOPOGRAPHY.
 - SEQUENCE BOUNDARIES FOR SEQUENCE D AND E WERE REVISED TO MAINTAIN EQUIVALENT LANDFILL FOOTPRINT ARE TO THAT OF THE EXISTING SWFP.

File: X:\CH028_0405202005 - CELL D PHASE II - Project - Drawings\Bound - Drawings - 012423\202005-C-111-SUBG-LINER PLAN-BIND.DWG User: haddalun@arizona.com Apr 27, 2023 1:28pm
 This drawing remains the intellectual property of Tetra Tech. Any reproduction in the field by other than Tetra Tech personnel violates the original purchase and use of this document. Tetra Tech will not be held liable for any changes made to this document without express written consent of the originator.



REV	REVISION DESCRIPTION	DATE

TETRA TECH
 800 East Wetmore Road, Suite 230
 Tucson, AZ 85719
 TEL 520.618.2400

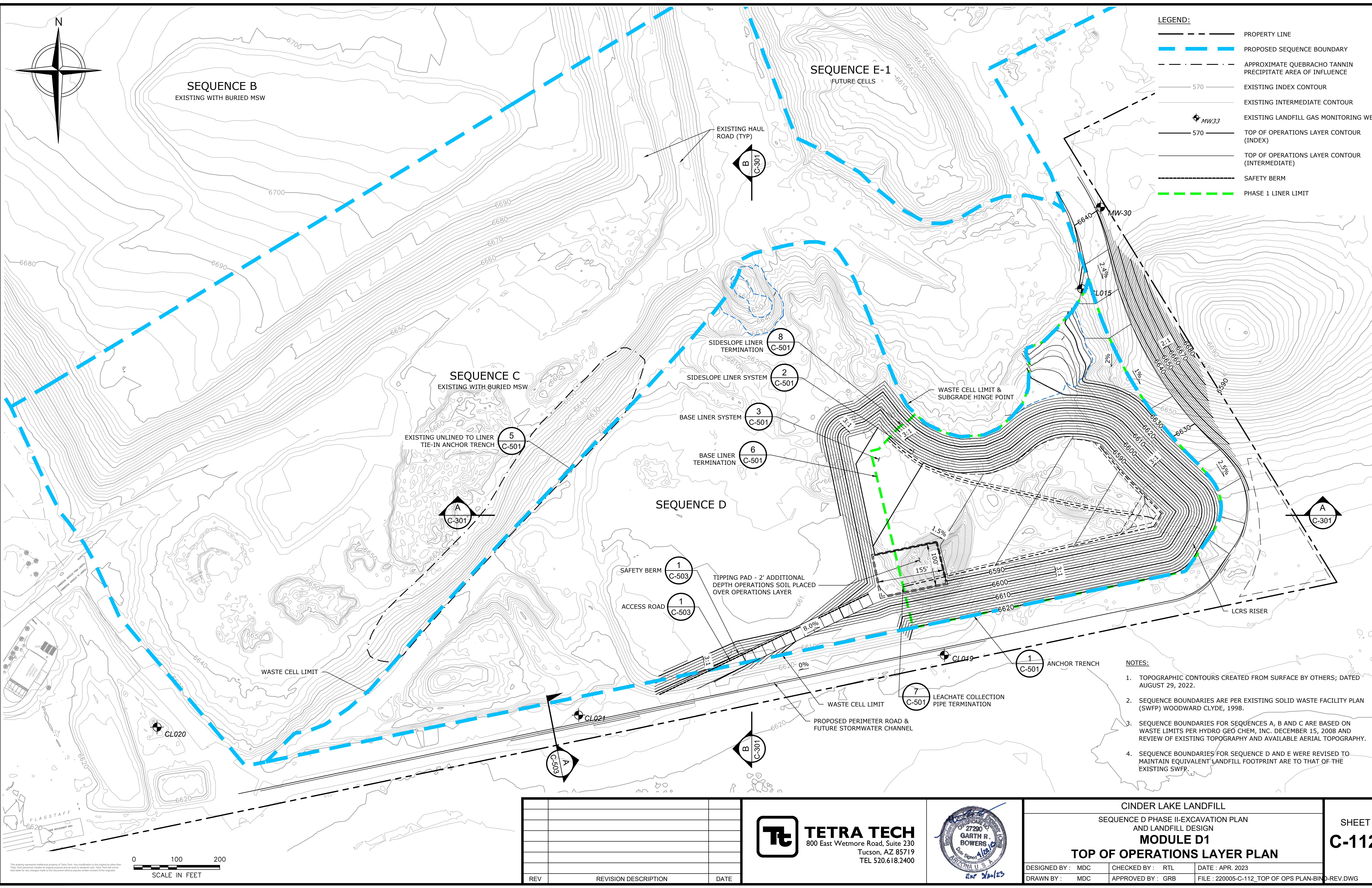


CINDER LAKE LANDFILL
 SEQUENCE D PHASE II-EXCAVATION PLAN
 AND LANDFILL DESIGN
SUBGRADE AND LINER PLAN
CONCEPT 1

DESIGNED BY: MDC	CHECKED BY: RTL	DATE: APR. 2023
DRAWN BY: MDC	APPROVED BY: GRB	FILE: 220005-C-111_SUBG-LINER PLAN-BIND.DWG

SHEET
C-111

PRELIMINARY - NOT FOR CONSTRUCTION



LEGEND:

	PROPERTY LINE
	PROPOSED SEQUENCE BOUNDARY
	APPROXIMATE QUEBRACHO TANNIN PRECIPITATE AREA OF INFLUENCE
	EXISTING INDEX CONTOUR
	EXISTING INTERMEDIATE CONTOUR
	EXISTING LANDFILL GAS MONITORING WELL
	TOP OF OPERATIONS LAYER CONTOUR (INDEX)
	TOP OF OPERATIONS LAYER CONTOUR (INTERMEDIATE)
	SAFETY BERM
	PHASE 1 LINER LIMIT

- NOTES:**
- TOPOGRAPHIC CONTOURS CREATED FROM SURFACE BY OTHERS; DATED AUGUST 29, 2022.
 - SEQUENCE BOUNDARIES ARE PER EXISTING SOLID WASTE FACILITY PLAN (SWFP) WOODWARD CLYDE, 1998.
 - SEQUENCE BOUNDARIES FOR SEQUENCES A, B AND C ARE BASED ON WASTE LIMITS PER HYDRO GEO CHEM, INC. DECEMBER 15, 2008 AND REVIEW OF EXISTING TOPOGRAPHY AND AVAILABLE AERIAL TOPOGRAPHY.
 - SEQUENCE BOUNDARIES FOR SEQUENCE D AND E WERE REVISED TO MAINTAIN EQUIVALENT LANDFILL FOOTPRINT ARE TO THAT OF THE EXISTING SWFP.

REV	REVISION DESCRIPTION	DATE

TETRA TECH
 800 East Wetmore Road, Suite 230
 Tucson, AZ 85719
 TEL 520.618.2400



CINDER LAKE LANDFILL
 SEQUENCE D PHASE II-EXCAVATION PLAN
 AND LANDFILL DESIGN
MODULE D1
TOP OF OPERATIONS LAYER PLAN

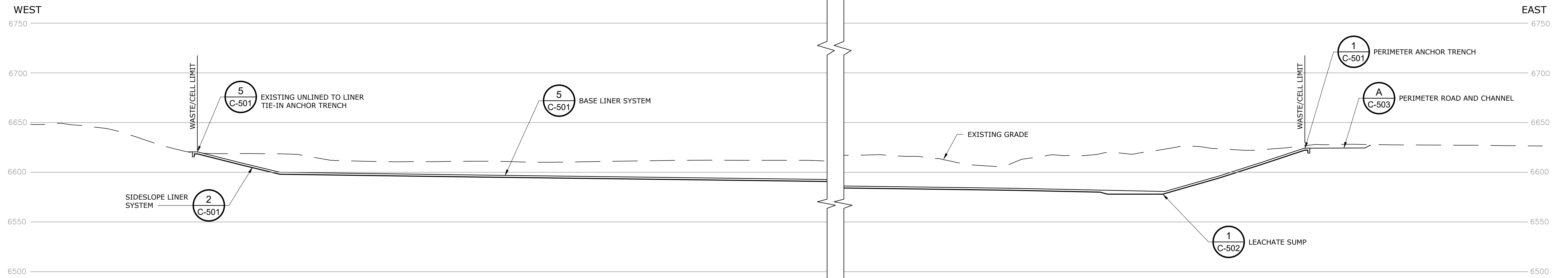
DESIGNED BY: MDC CHECKED BY: RTL DATE: APR. 2023
 DRAWN BY: MDC APPROVED BY: GRB FILE: 220005-C-112_TOP OF OPS PLAN-BIN-D-REV.DWG

SHEET
C-112

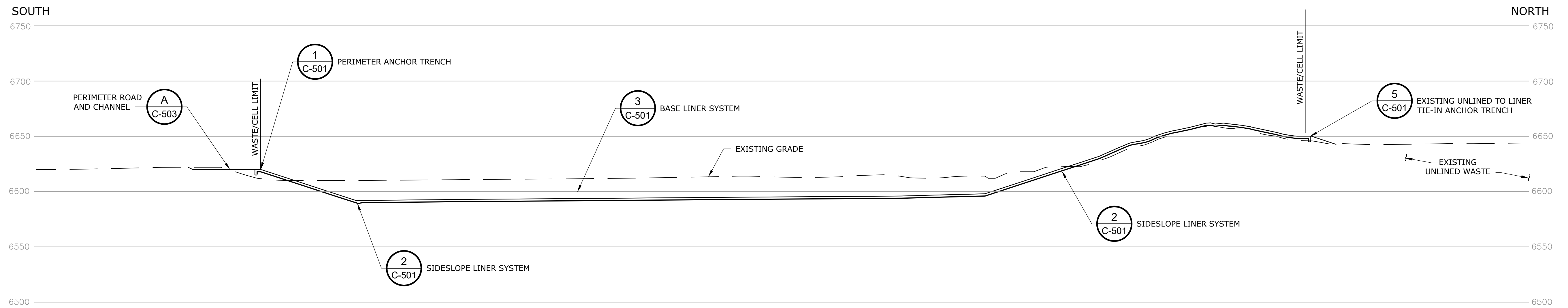
File: X:\CINDER_LAKE\220005 - CELL D PHASE II-Excavation\Drawings\BIN-D-REV.DWG - 012423\220005-C-112_Top of Ops Plan-BIN-D-REV.DWG - Layouts - C-112 - User: kaddalmetre, Apr 27, 2023 - 3:40pm
 This drawing represents intellectual property of Tetra Tech. Any reproduction or use without the written consent of Tetra Tech is prohibited. Tetra Tech shall not be held responsible for any changes made to this document without express written consent of the originator.

PRELIMINARY - NOT FOR CONSTRUCTION

File: \\tetra\tech\proj\projects\cinder\cinder - 012023\220005-C-301_LF_SECTIONS-BIND.DWG, Layout: C-301, User: matt.jordan, Apr 26, 2023, 3:07pm



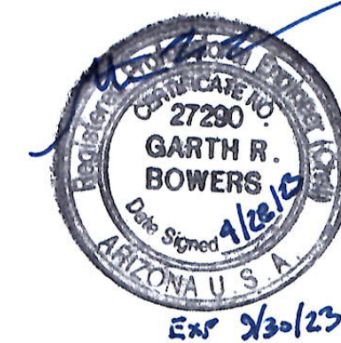
LANDFILL SECTION
SECTION A
 SCALE: 1"=50'



LANDFILL SECTION
SECTION B
 SCALE: 1"=50'

REV	REVISION DESCRIPTION	DATE

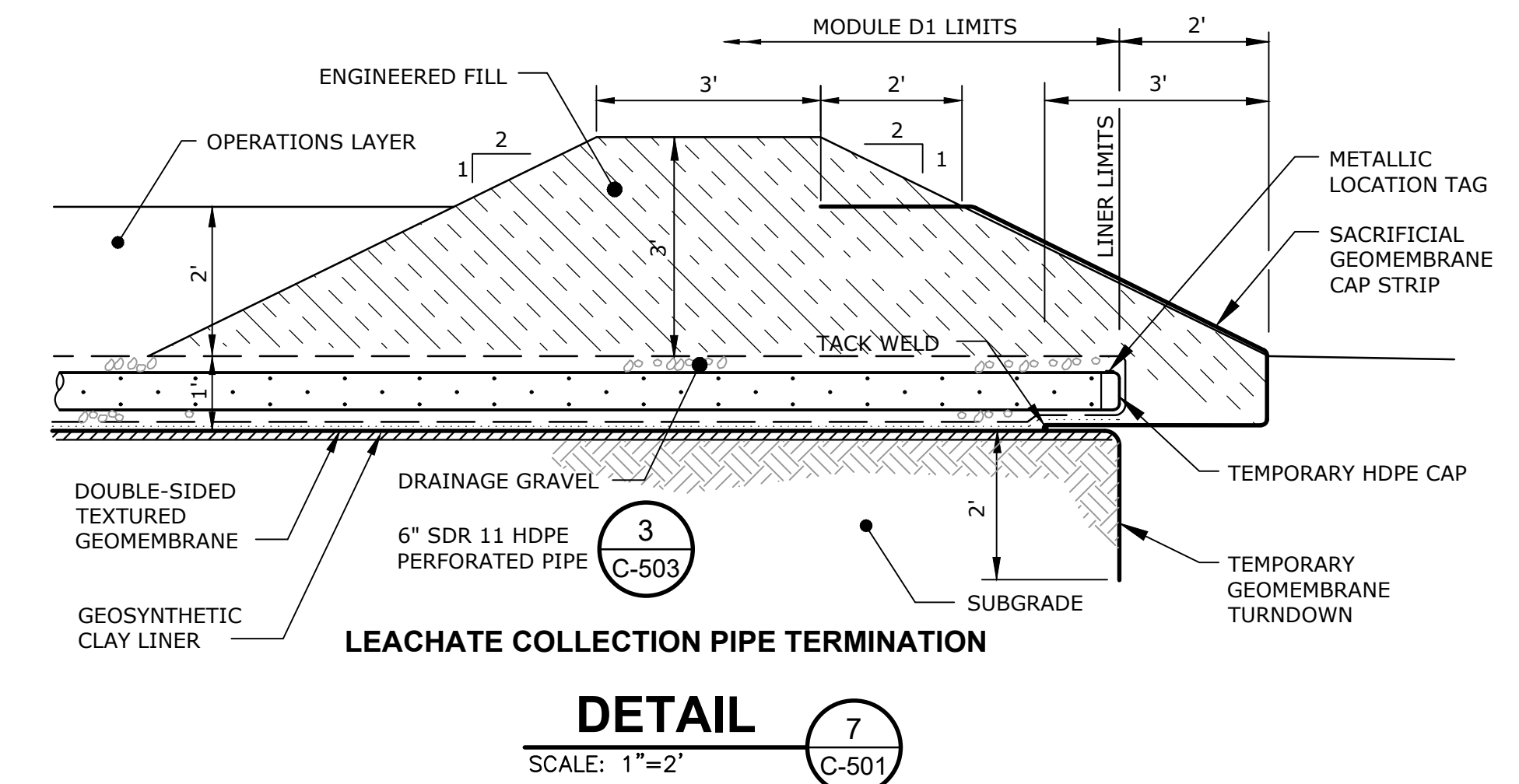
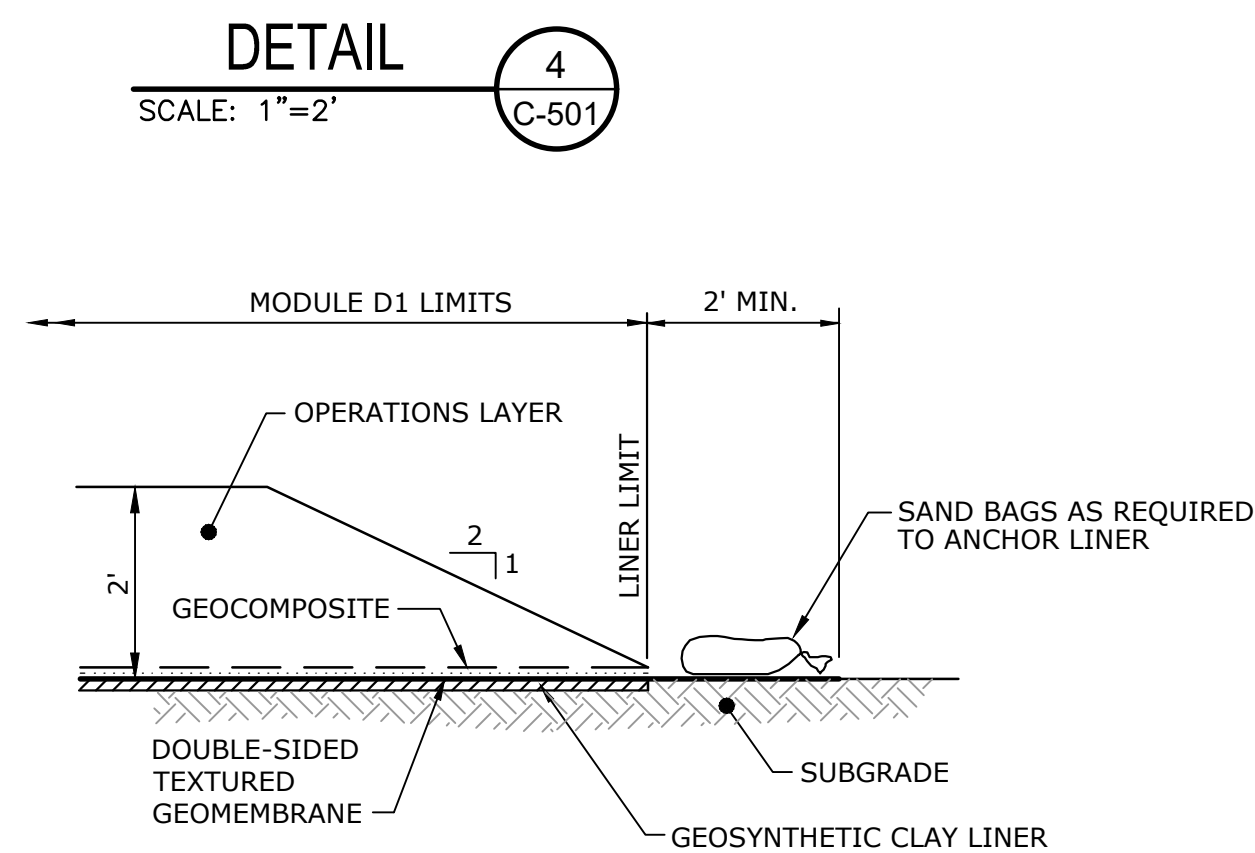
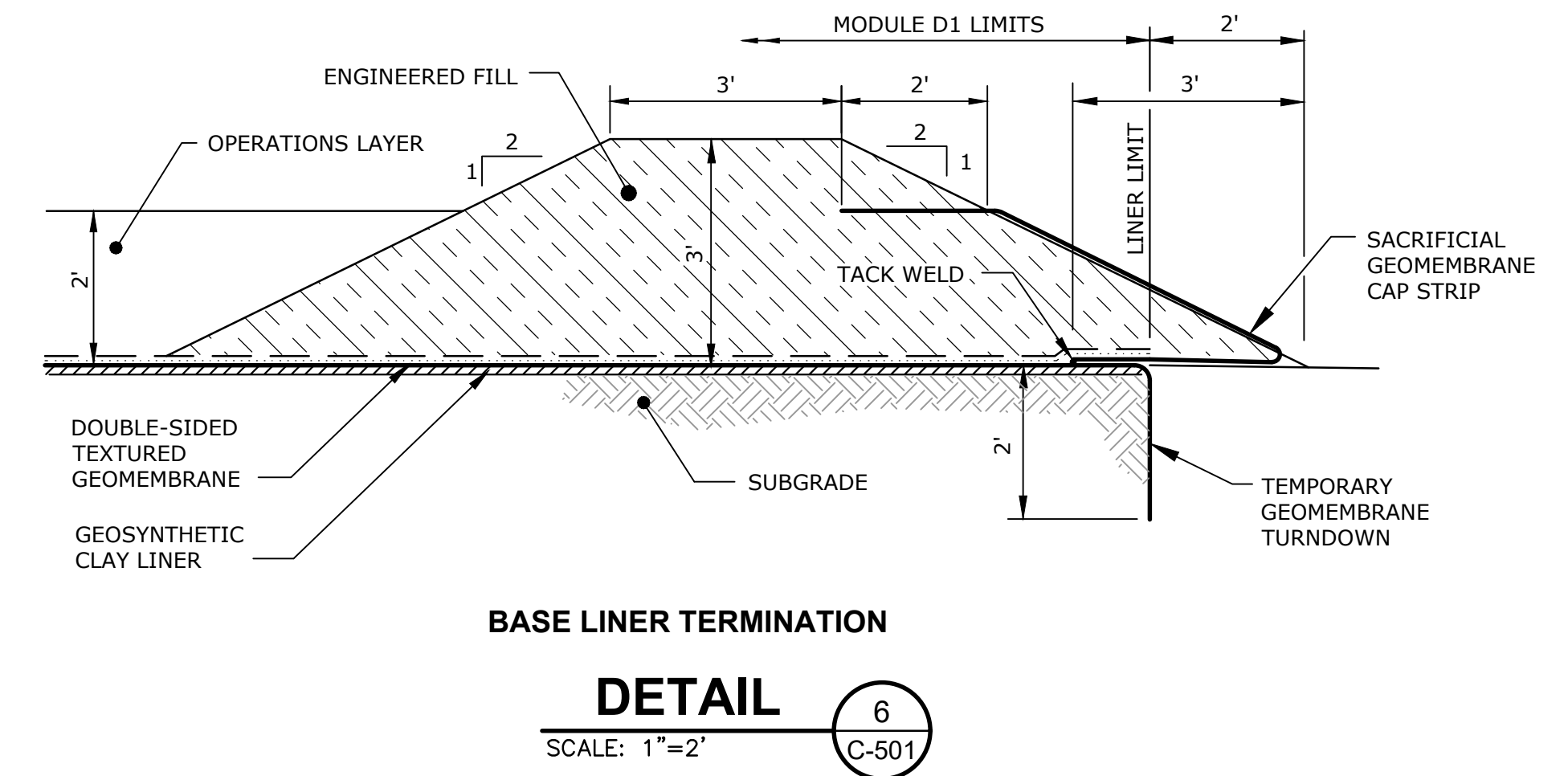
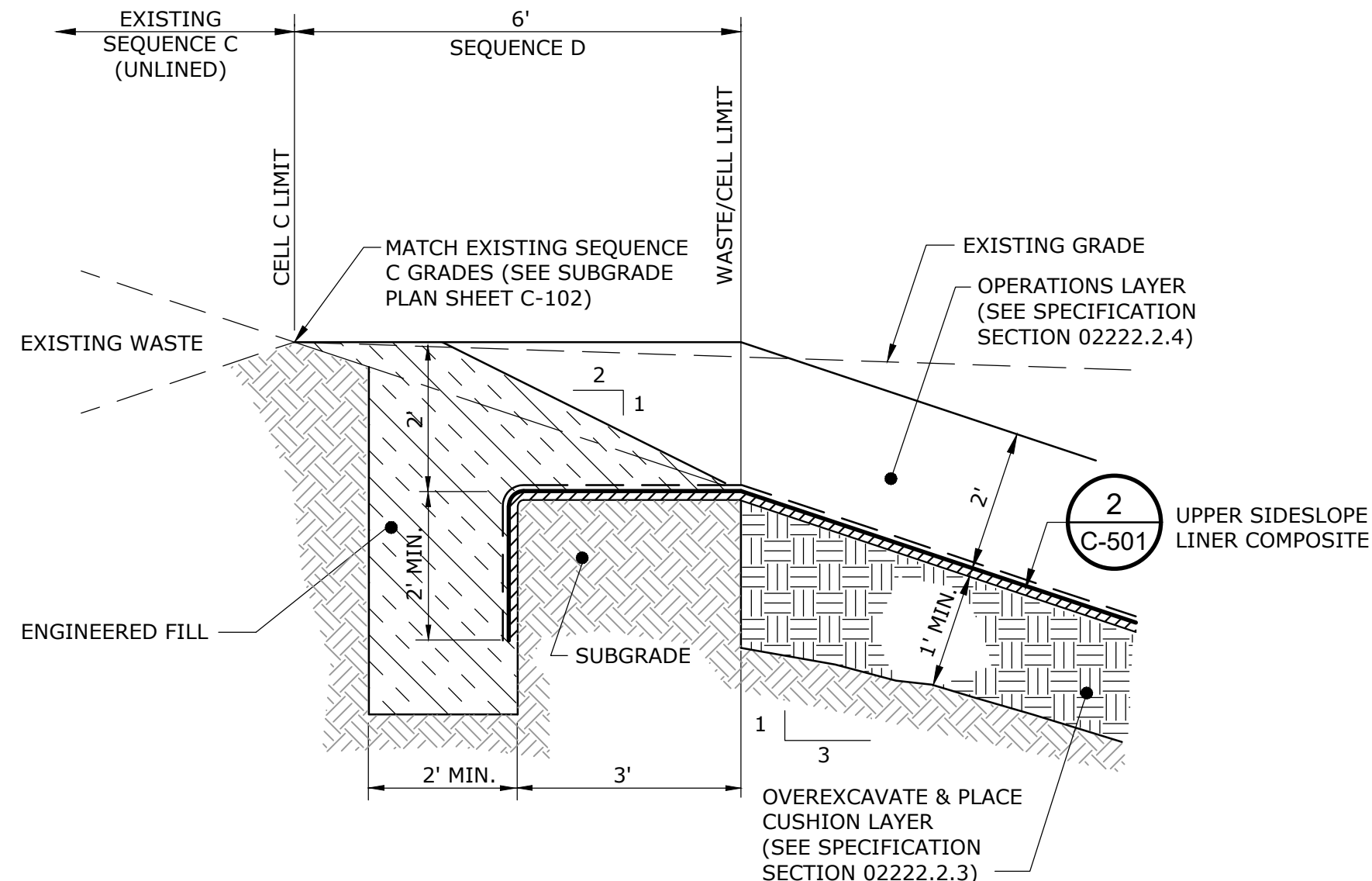
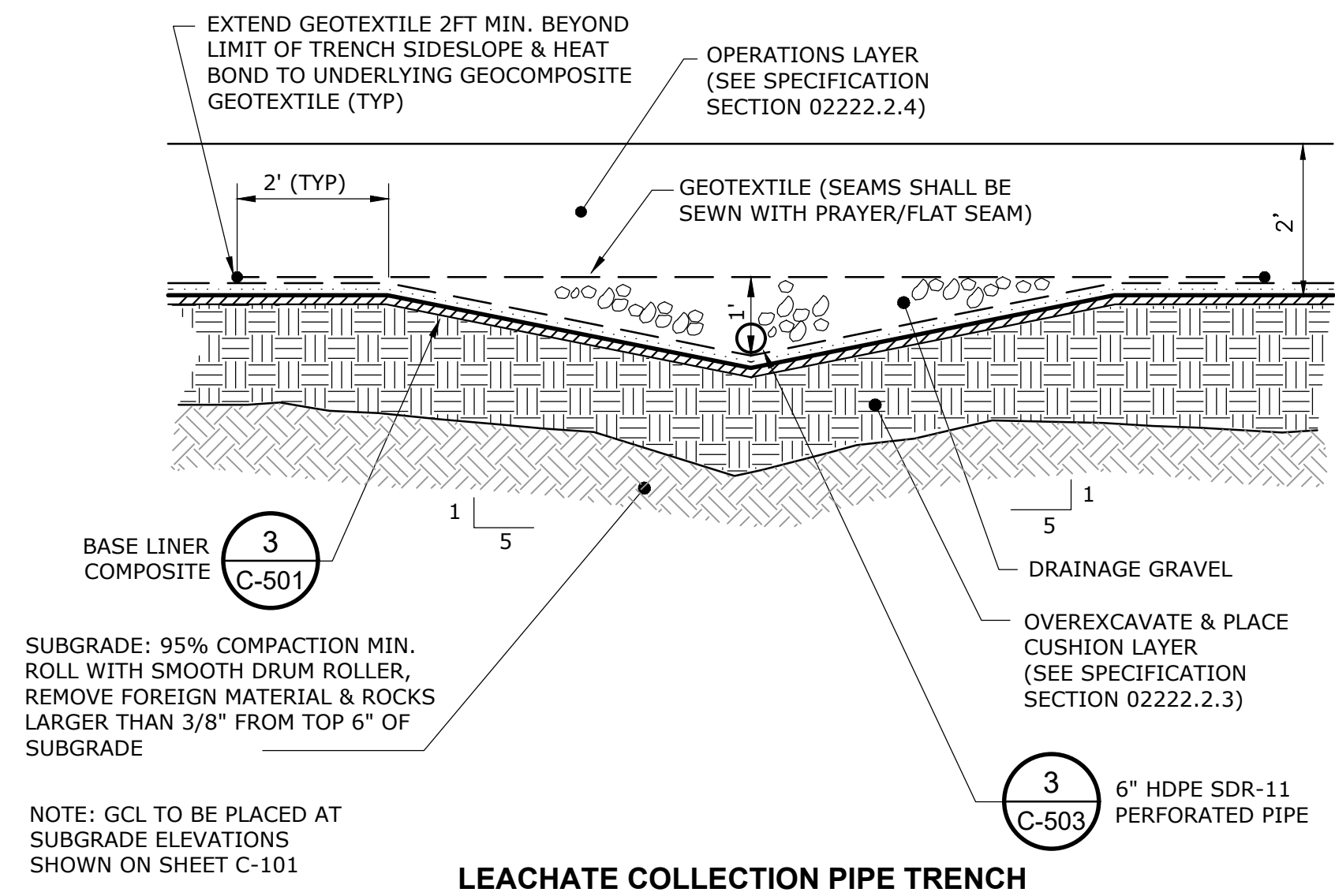
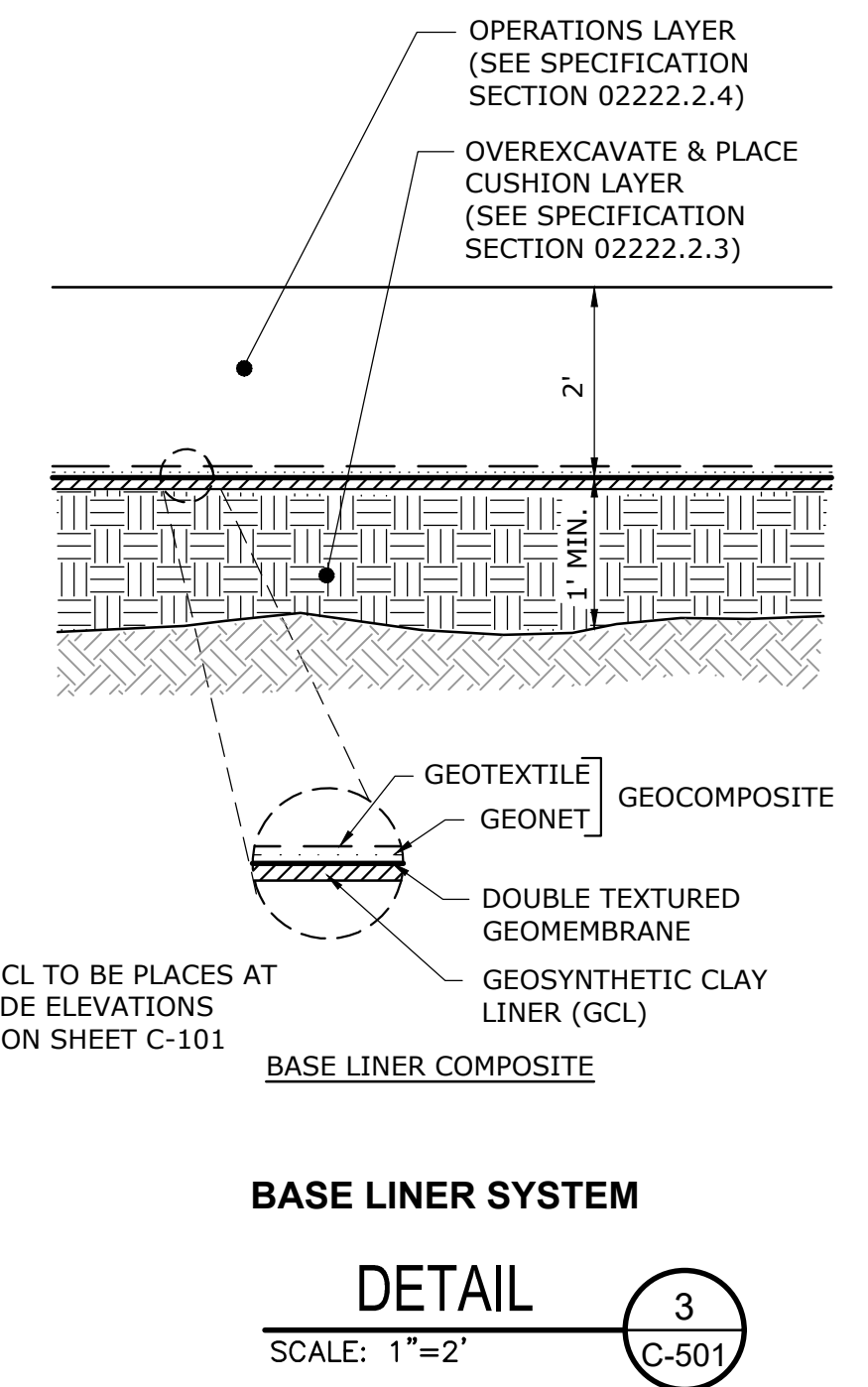
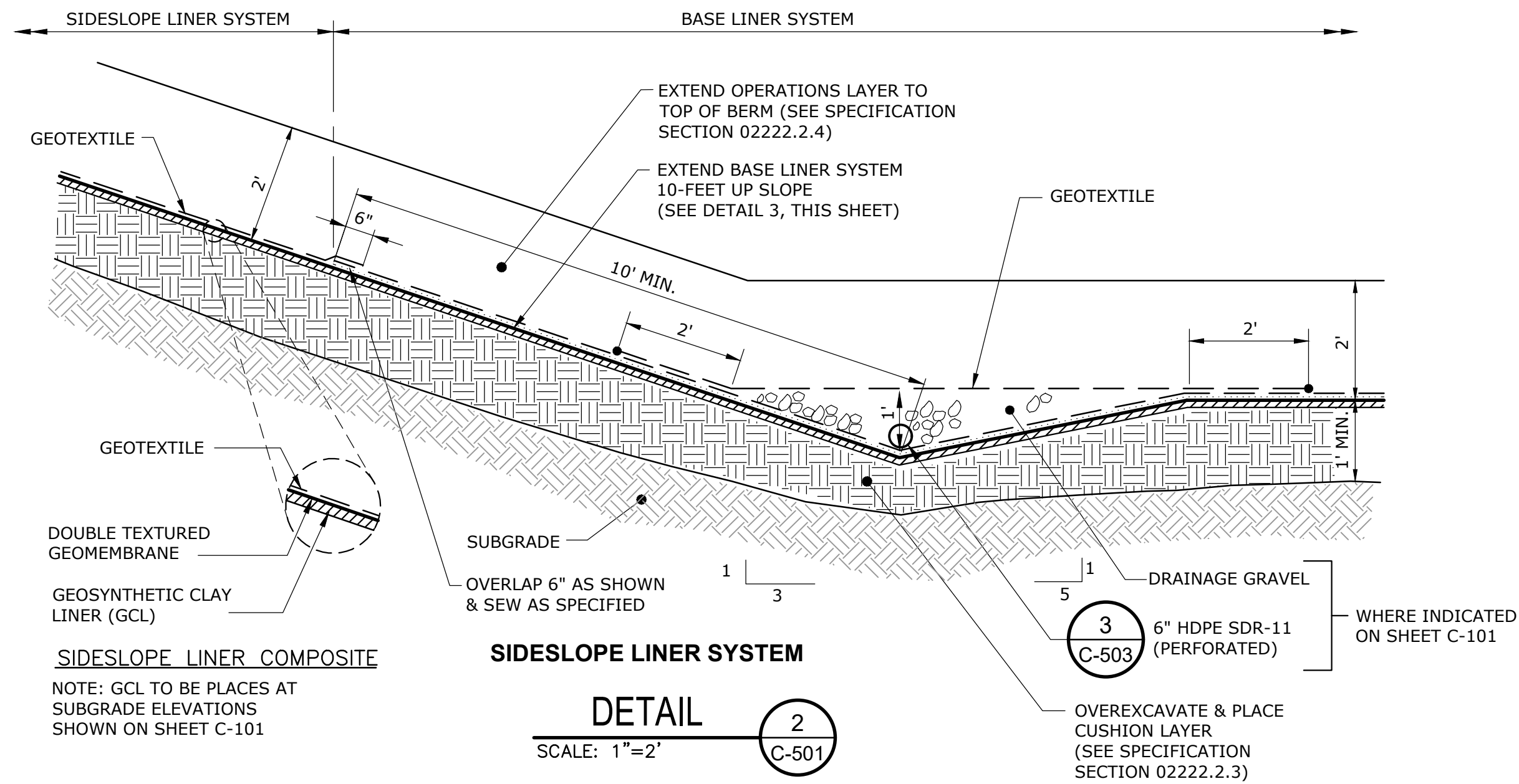
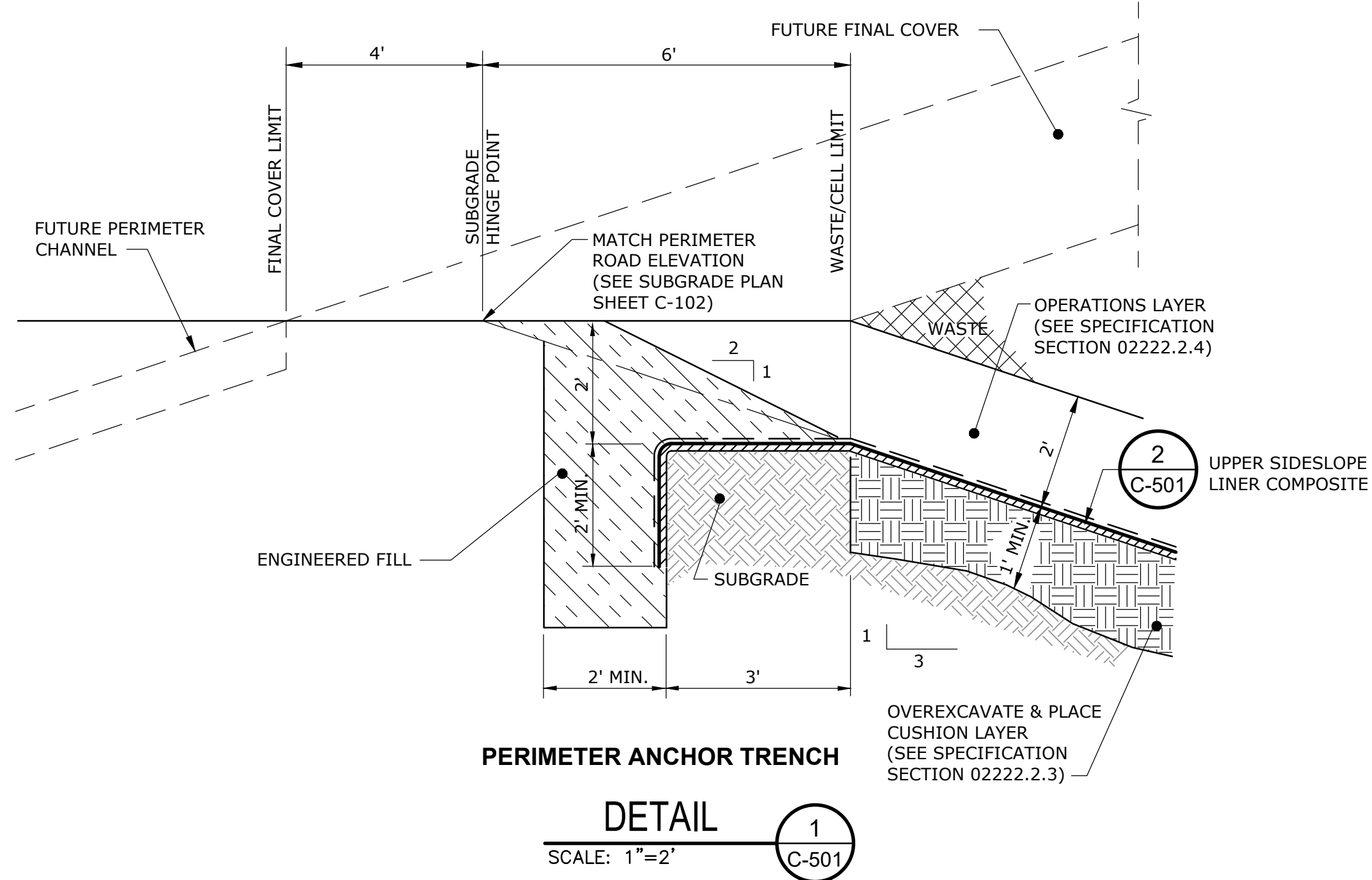

TETRA TECH
 800 East Wetmore Road, Suite 230
 Tucson, AZ 85719
 TEL 520.618.2400



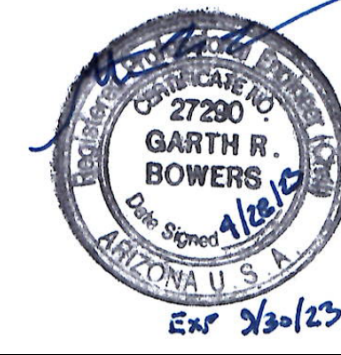
CINDER LAKE LANDFILL		
SEQUENCE D PHASE II-EXCAVATION PLAN AND LANDFILL DESIGN		
LANDFILL SECTIONS		
DESIGNED BY: MDC	CHECKED BY: RTL	DATE: APR. 2023
DRAWN BY: MDC	APPROVED BY: GRB	FILE: 220005-C-301_LF SECTIONS-BIND.DWG

SHEET
C-301

PRELIMINARY - NOT FOR CONSTRUCTION



REV	REVISION DESCRIPTION	DATE

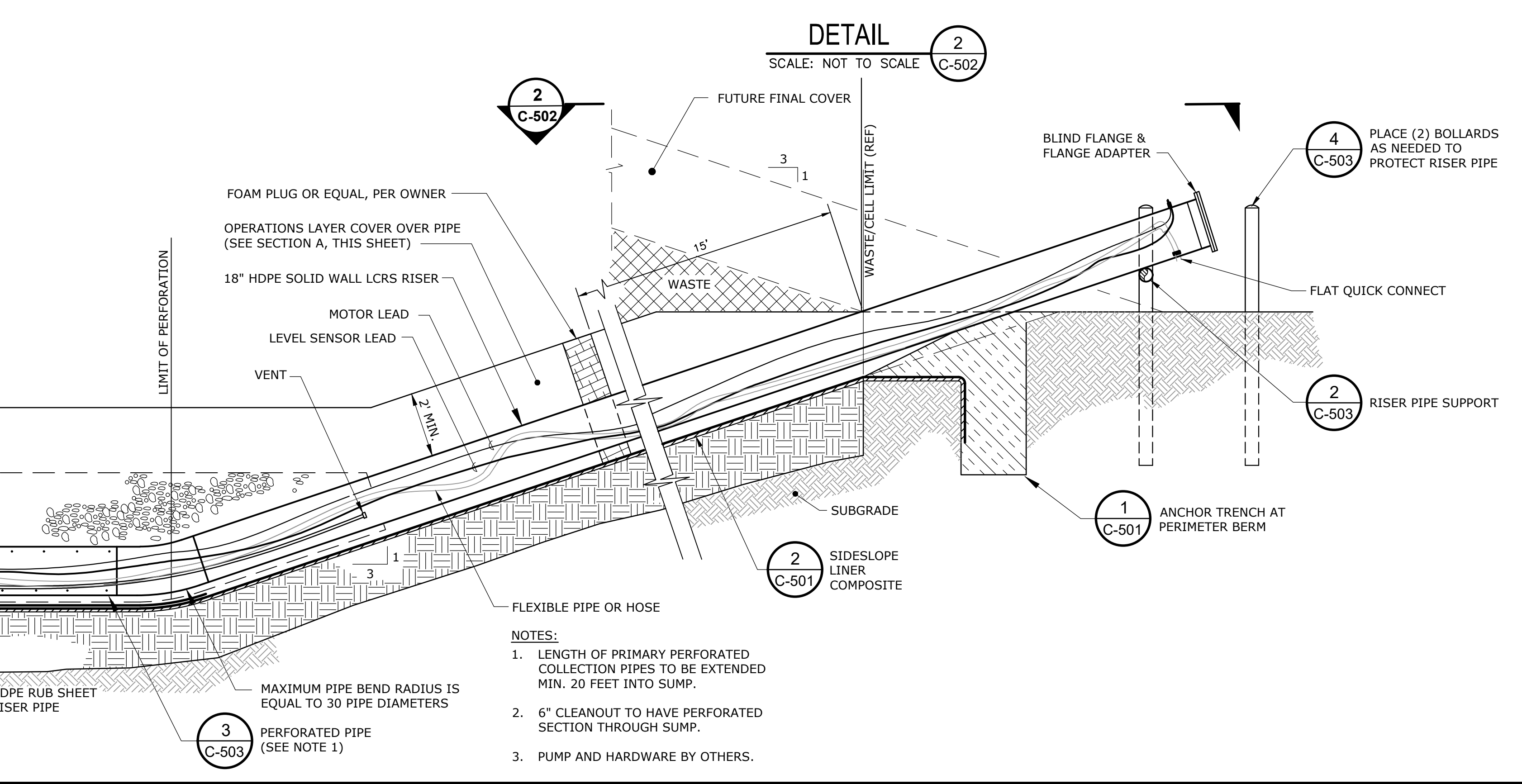
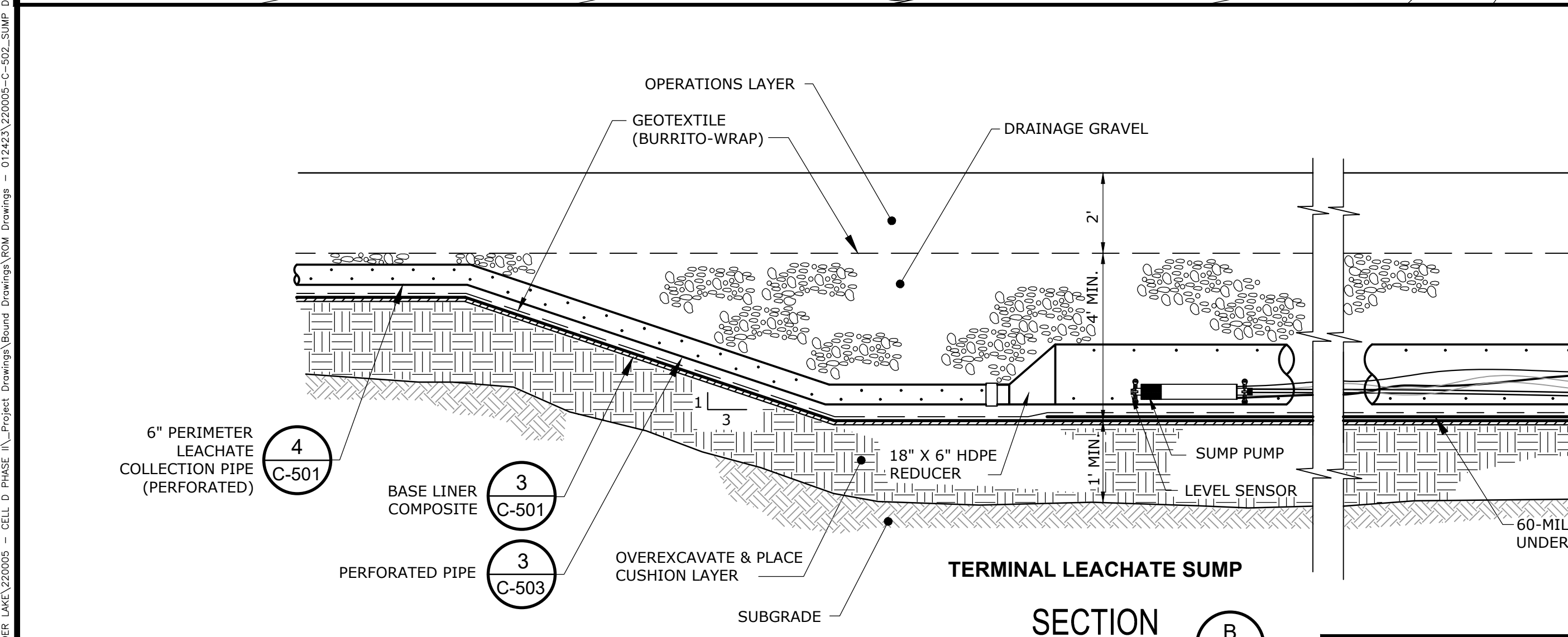
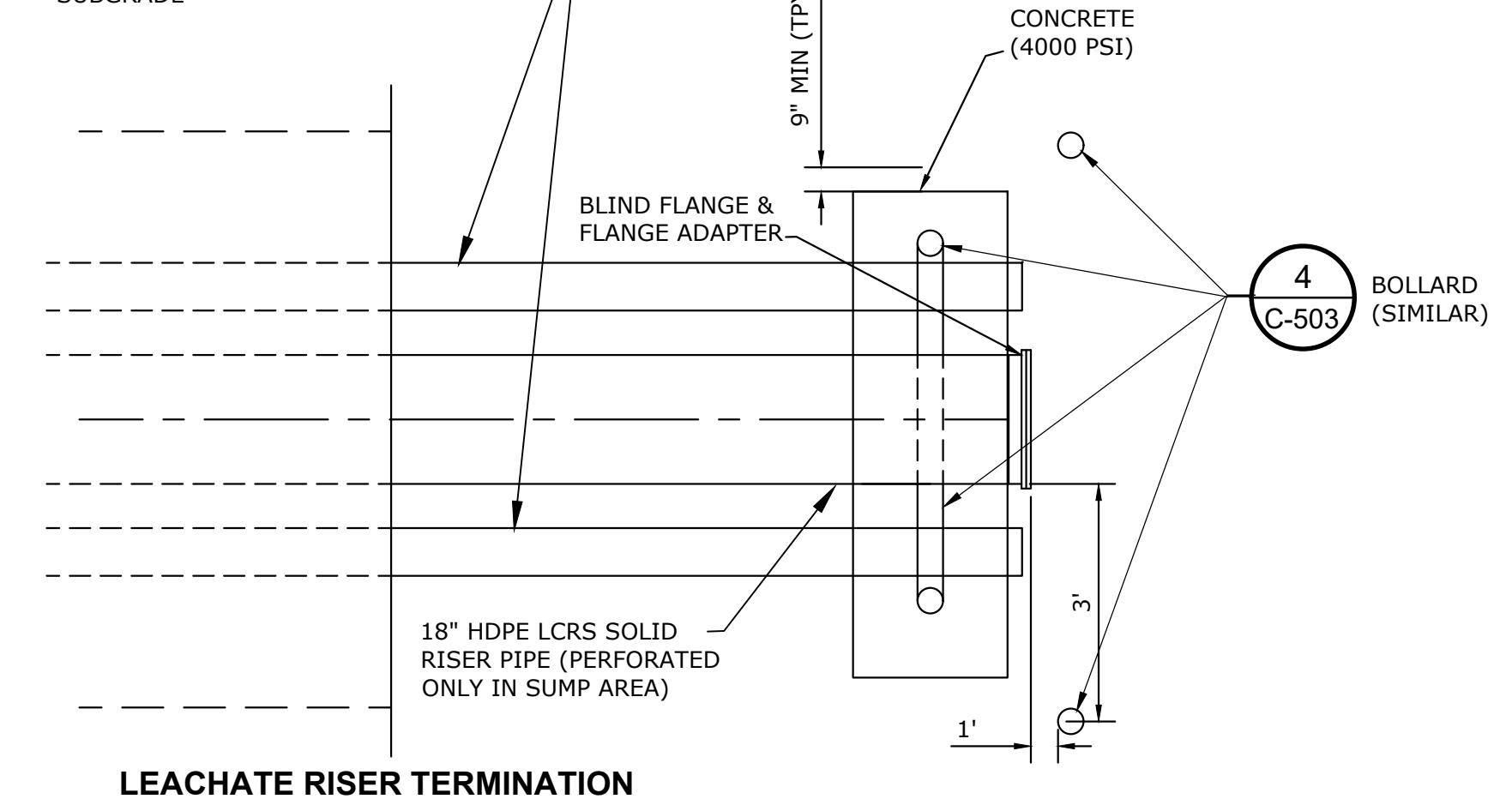
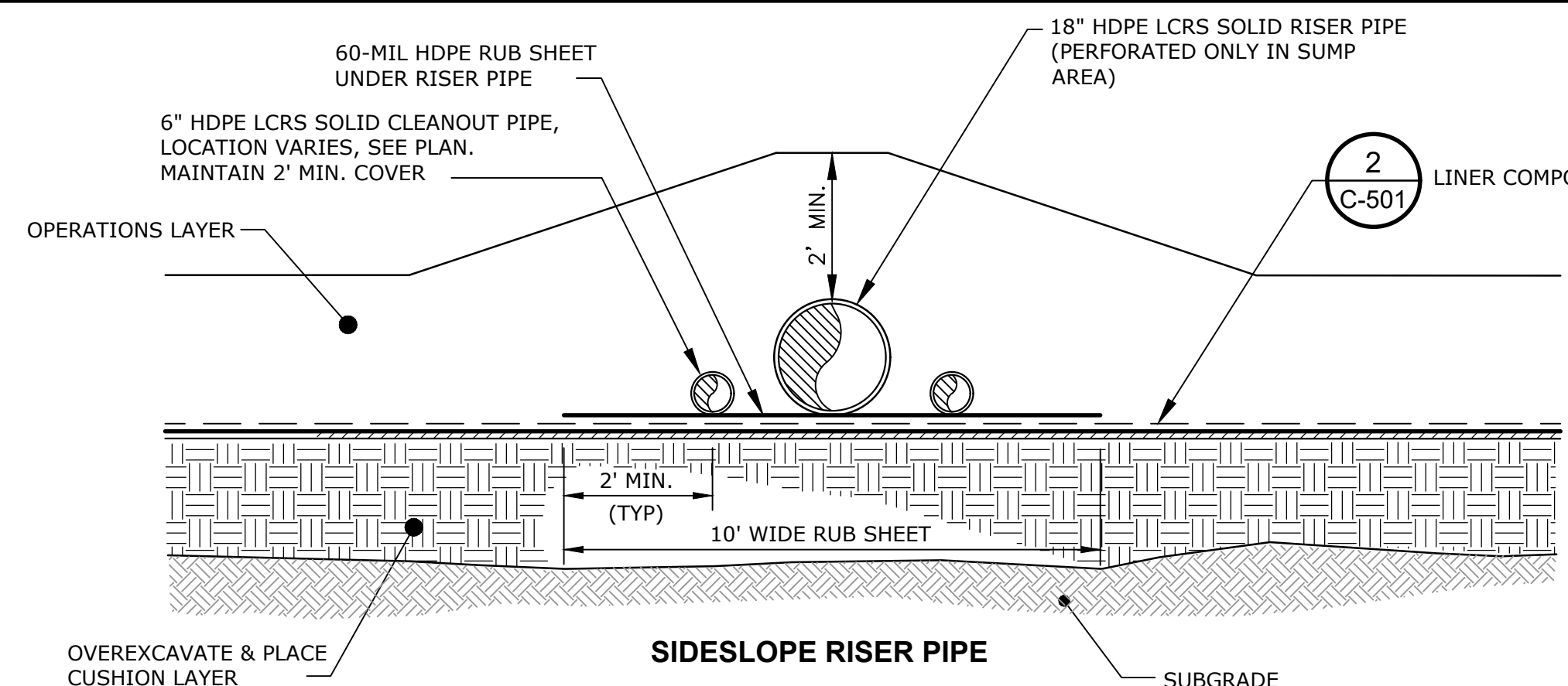
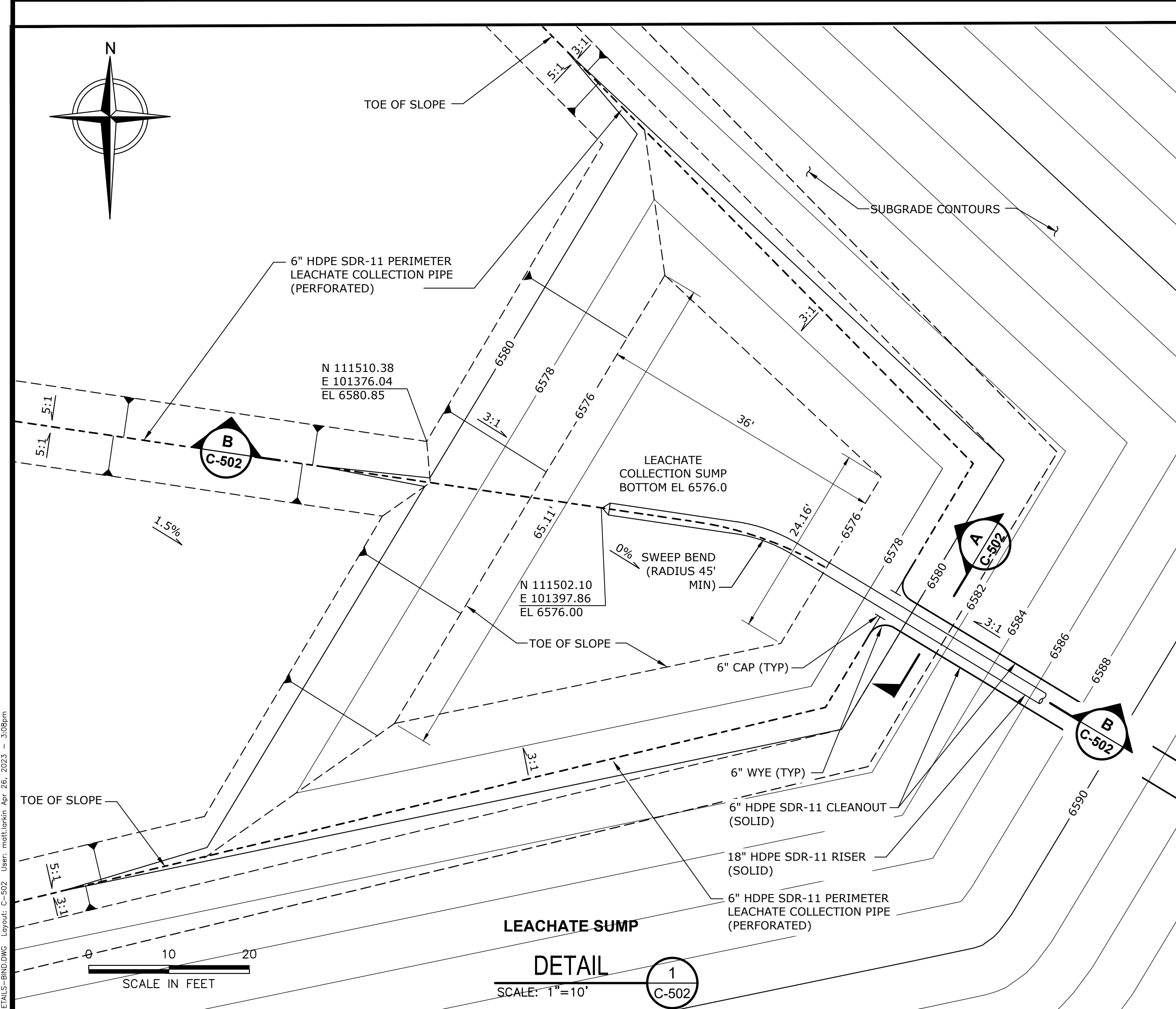


CINDER LAKE LANDFILL SEQUENCE D PHASE II-EXCAVATION PLAN AND LANDFILL DESIGN		
LINER DETAILS		
DESIGNED BY: MDC	CHECKED BY: RTL	DATE: APR. 2023
DRAWN BY: MDC	APPROVED BY: GRB	FILE: 220005-C-501_LINER DETAILS-BIND-FEV.dwg

SHEET
C-501

PRELIMINARY - NOT FOR CONSTRUCTION

File: \\h:\projects\cinder_lake\220005 - CINDER LAKE LANDFILL - PHASE II - EXCAVATION PLAN AND LANDFILL DESIGN - LINER DETAILS - BIND - FEV.dwg



- NOTES:**
1. LENGTH OF PRIMARY PERFORATED COLLECTION PIPES TO BE EXTENDED MIN. 20 FEET INTO SUMP.
 2. 6" CLEANOUT TO HAVE PERFORATED SECTION THROUGH SUMP.
 3. PUMP AND HARDWARE BY OTHERS.

File: \\tetra\tech\proj\220005\CINDER LAKE\PROJECTS\CINDER LAKE\220005 - C-502_SUMP DETAILS-BIND.DWG
 Drawings: 01/24/2023 10:25:05 AM - C-502_SUMP DETAILS-BIND.DWG
 User: mch\larkin; Job: 26; 2023 - 3:05pm

REV	REVISION DESCRIPTION	DATE

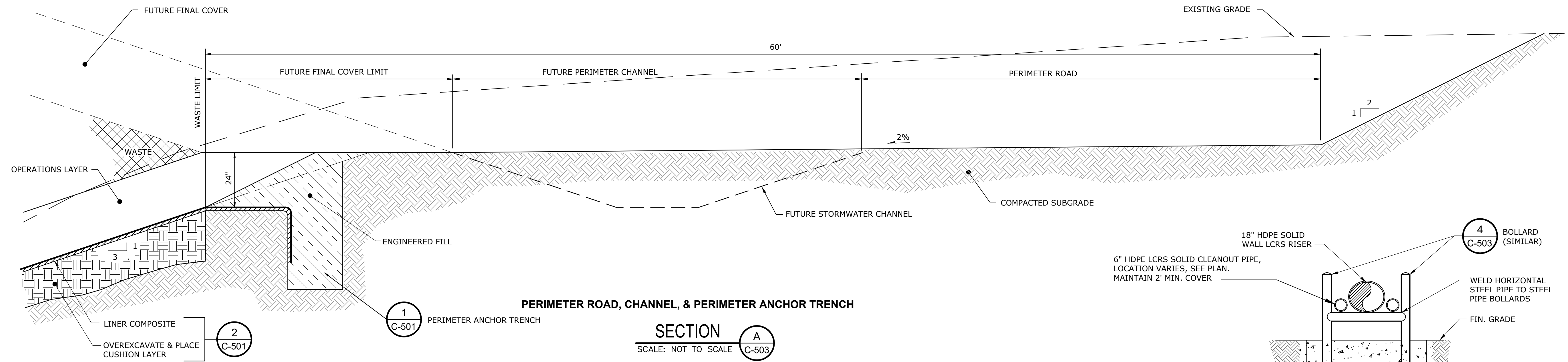

TETRA TECH
 800 East Wetmore Road, Suite 230
 Tucson, AZ 85719
 TEL 520.618.2400



CINDER LAKE LANDFILL SEQUENCE D PHASE II-EXCAVATION PLAN AND LANDFILL DESIGN SUMP DETAILS			SHEET C-502
DESIGNED BY: MDC	CHECKED BY: RTL	DATE: DEC. 2022	FILE: 220005-C-502_SUMP DETAILS-BIND.DWG
DRAWN BY: MDC	APPROVED BY: GRB		

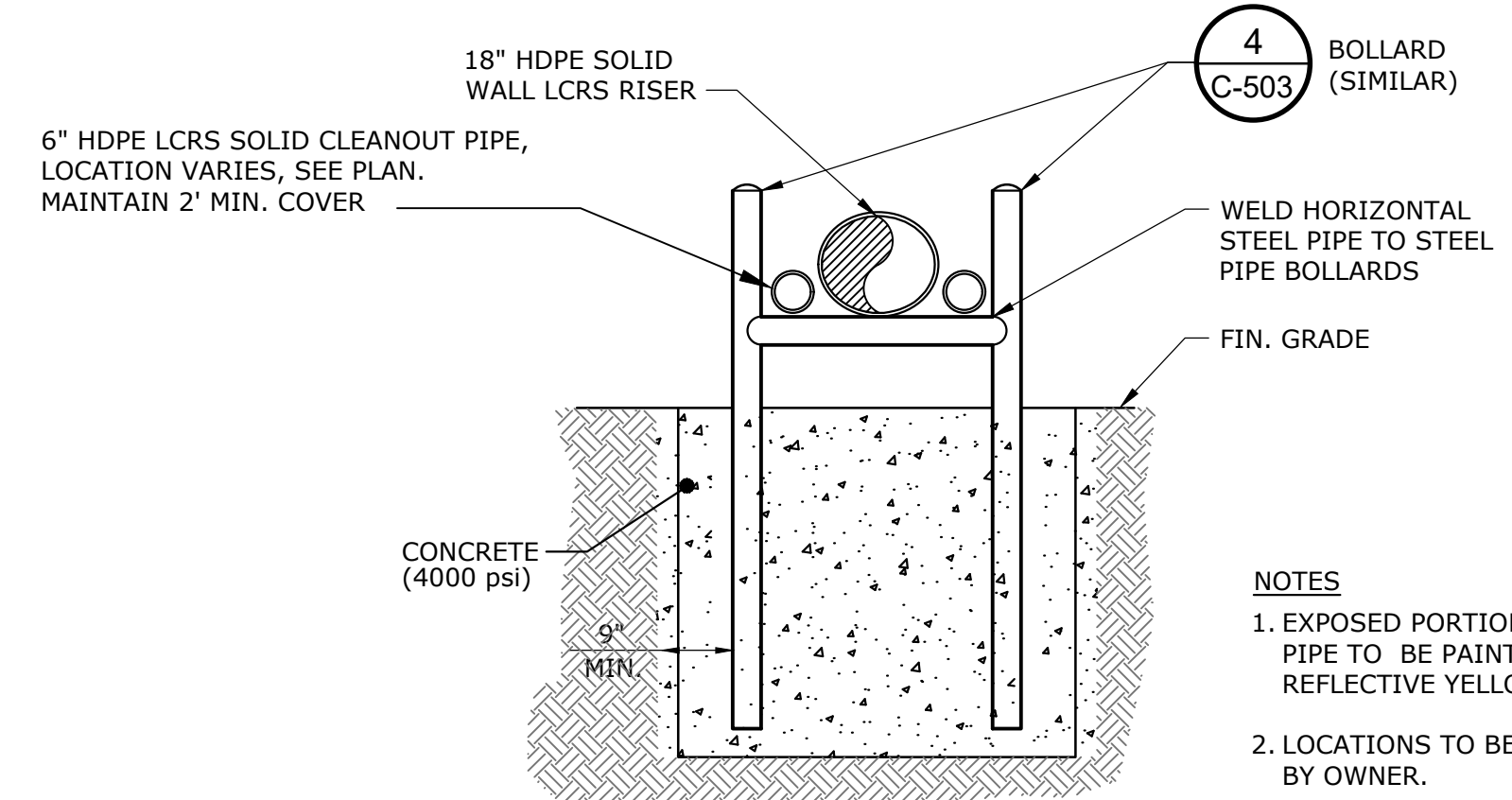
PRELIMINARY - NOT FOR CONSTRUCTION

File: \\tetra\tech\proj\projects\cinder lake\220005 - cell d phase ii\project drawings\bound drawings\001 - 012023\220005-C-503-STORM DETAILS-BIND.DWG Layout: C-503 User: mcdonalds Apr 26, 2023 10:30am



PERIMETER ROAD, CHANNEL, & PERIMETER ANCHOR TRENCH

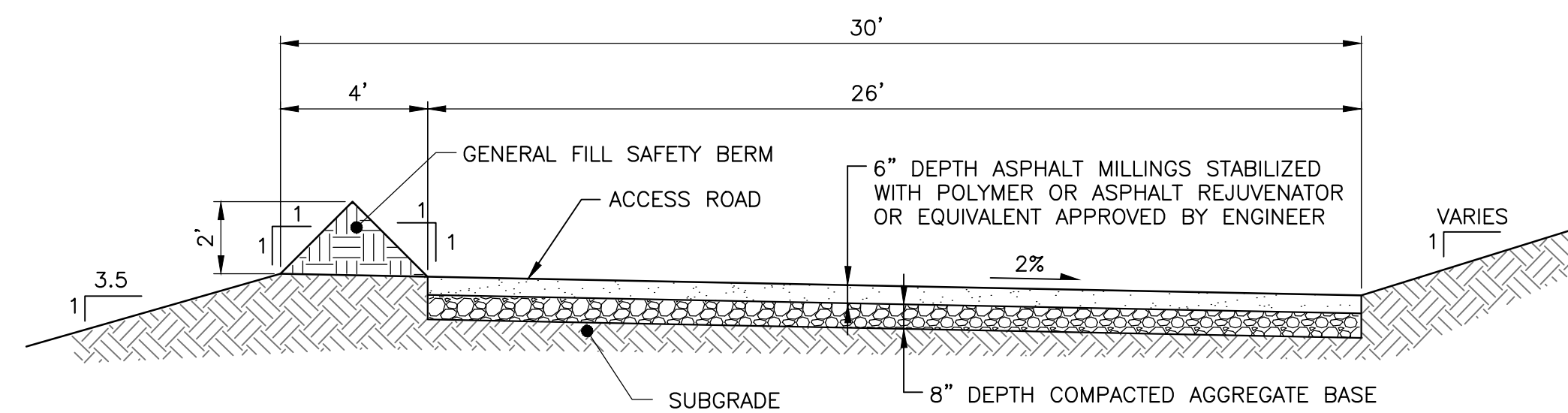
SECTION A
SCALE: NOT TO SCALE



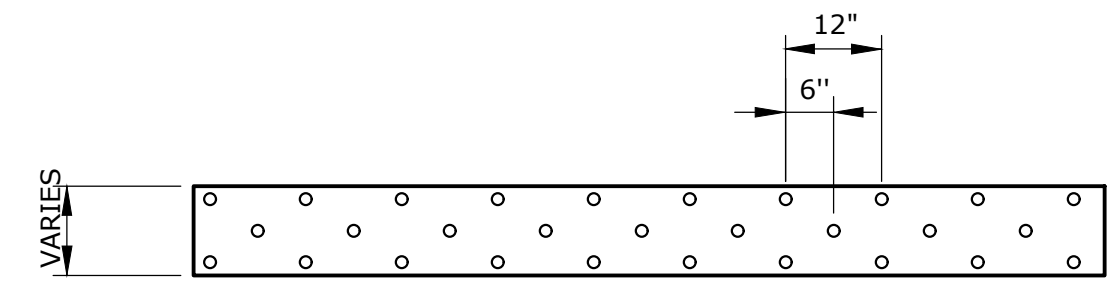
RISER PIPE SUPPORT

DETAIL 2
SCALE: NOT TO SCALE

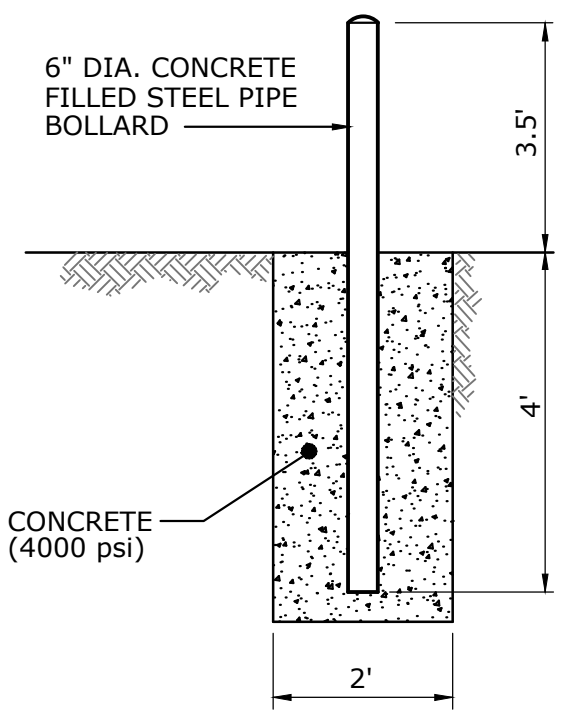
- NOTES**
1. EXPOSED PORTION OF STEEL PIPE TO BE PAINTED WITH REFLECTIVE YELLOW COATING
 2. LOCATIONS TO BE PROVIDED BY OWNER.
 3. CONCRETE TO BE CAST-IN-PLACE AGAINST UNDISTURBED NATIVE MATERIAL OR ENGINEERED FILL.



ACCESS ROAD
DETAIL 1
SCALE: 1"=4'



PIPE PERFORATION PATTERN
DETAIL 3
SCALE: NOT TO SCALE



BOLLARD
DETAIL 4
SCALE: NOT TO SCALE

- NOTES**
1. EXPOSED PORTION OF STEEL PIPE TO BE PAINTED WITH REFLECTIVE YELLOW COATING
 2. LOCATIONS TO BE PROVIDED BY OWNER.
 3. CONCRETE TO BE CAST-IN-PLACE AGAINST UNDISTURBED NATIVE MATERIAL OR ENGINEERED FILL.

REV	REVISION DESCRIPTION	DATE


TETRA TECH
 800 East Wetmore Road, Suite 230
 Tucson, AZ 85719
 TEL 520.618.2400



CINDER LAKE LANDFILL SEQUENCE D PHASE II-EXCAVATION PLAN AND LANDFILL DESIGN STORMWATER DETAILS		
DESIGNED BY: MDC	CHECKED BY: RTL	DATE: APR. 2023
DRAWN BY: MDC	APPROVED BY: GRB	FILE: 220005-C-503_STORM DETAILS-BIND.DWG

SHEET
C-503

PRELIMINARY - NOT FOR CONSTRUCTION