

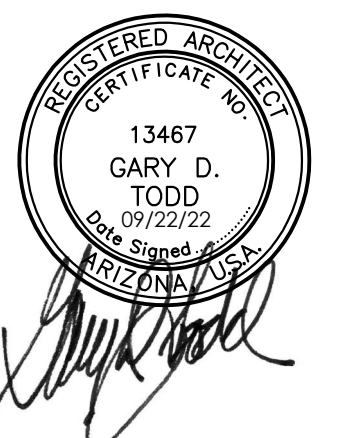
**LIV  
TIMBER SKY**

FLAGSTAFF, AZ

CLIENT **LIV COMMUNITIES**

8950 S 52ND ST, SUITE 115  
TEMPE, AZ 85284

SEAL



CONTACT



ARCHITECTURE, PLANNING,  
LANDSCAPE ARCHITECTURE.

4019 N. 44TH ST. / PHOENIX, AZ 85018  
602-952-8280 / TODDASSOC.COM

Copyright 2022 Todd & Associates, Inc.

PHASE  
DATA

09-22-2022  
SITE PLAN REVIEW  
SUBMITTAL

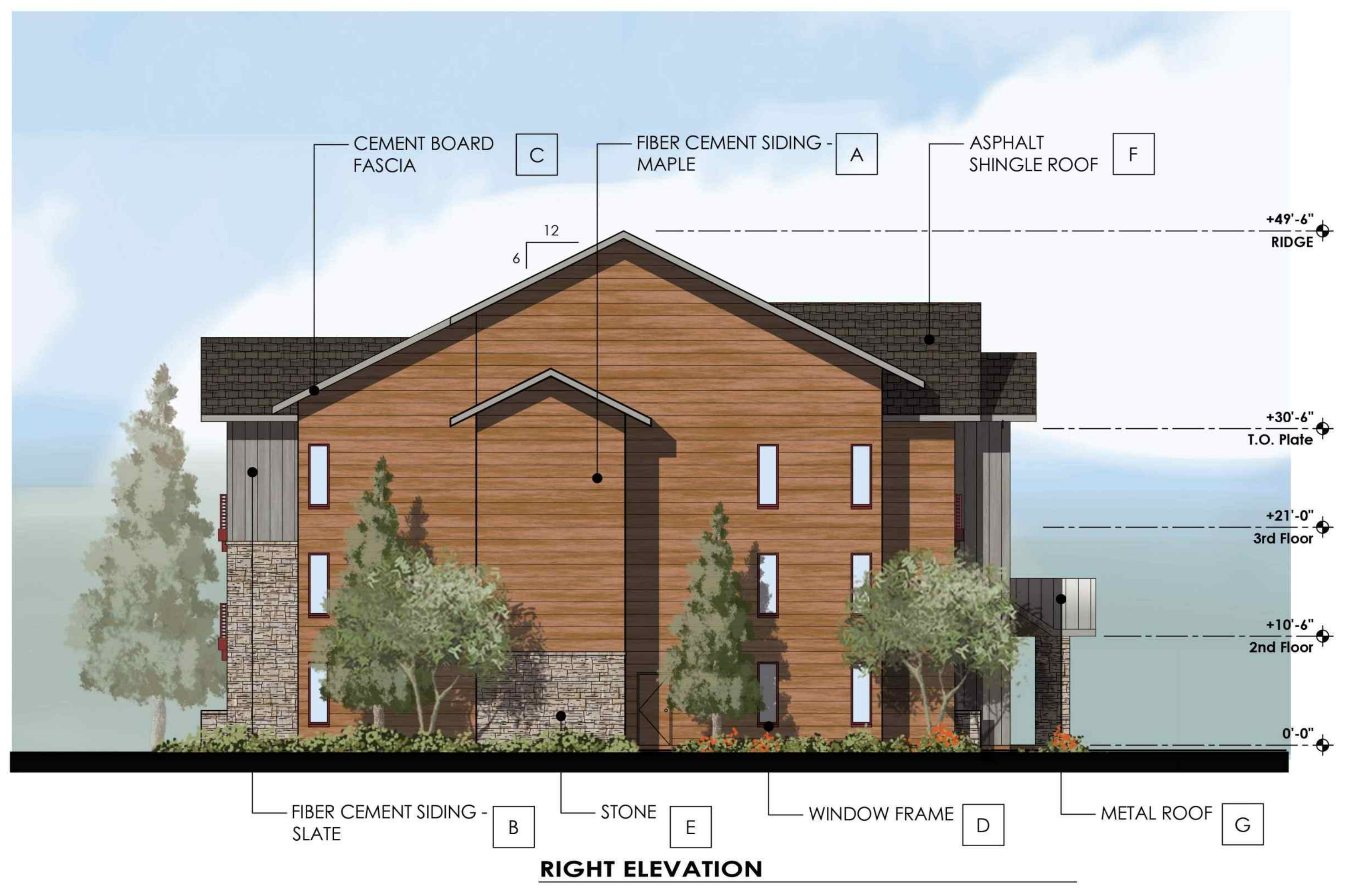
Proj Mgr.  
Dwn By:

BUILDING TYPE 1  
ELEVATIONS

**A3.1.1**



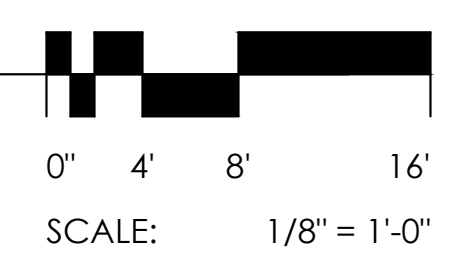
**FRONT ELEVATION**



**RIGHT ELEVATION**

LOCATION	COLOR	SWATCH
A Fiber Cement Siding Body 1	MFG.: Allura Lap Siding - Horizontal Panels Traditional Texture COLOR: PPG Bleached Maple (PPG1089-5) LRV: 37	[Swatch]
B Fiber Cement Siding Body 2	MFG.: Allura Lap Siding - Vertical Panels Traditional Texture COLOR: PPG Cloudy Slate (PPG0996-4) LRV: 29	[Swatch]
C Fiber Cement Fascia	MFG.: Allura - Plycem Fiber Cement Trim COLOR: Alurra Sterling Gray LRV: 48.2	[Swatch]
D Fiber Cement Trim	MFG.: Allura - Plycem Fiber Cement Trim COLOR: Alurra Autumn Red LRV: 12.6	[Swatch]
E Stone Veneer	MFG.: Coronado - Getty Stone COLOR: Embassy Blend LRV: 45.43	[Swatch]
F Shingle Roof	MFG.: GAF Timberline - Ultra HD Shingles COLOR: Charcoal LRV: n/a	[Swatch]
G Metal Roof	MFG.: MBCI - Slimline Roof Panel COLOR: Signature 300 "Slate Gray" LRV: 18.76	[Swatch]
H Metal Railing	MFG.: Sherwin Williams COLOR: SW 7578 "Borscht" LRV: 6	[Swatch]

**TYPE 1 ELEVATIONS**

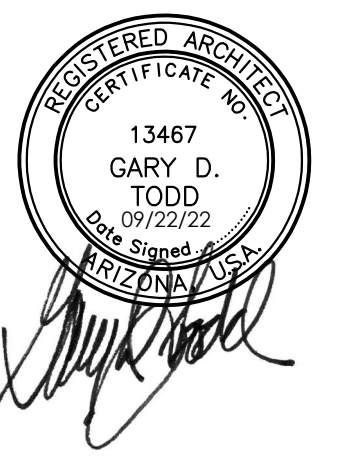


**LIV  
TIMBER SKY**

FLAGSTAFF, AZ

CLIENT **LIV COMMUNITIES**

8950 S 52ND ST, SUITE 115  
TEMPE, AZ 85284



ARCHITECTURE, PLANNING,  
LANDSCAPE ARCHITECTURE.  
4019 N. 44TH ST. / PHOENIX, AZ 85018  
602-952-8280 / TODDASSOC.COM  
Copyright 2022 Todd & Associates, Inc.

PHASE 09-22-2022  
SITE PLAN REVIEW  
SUBMITTAL

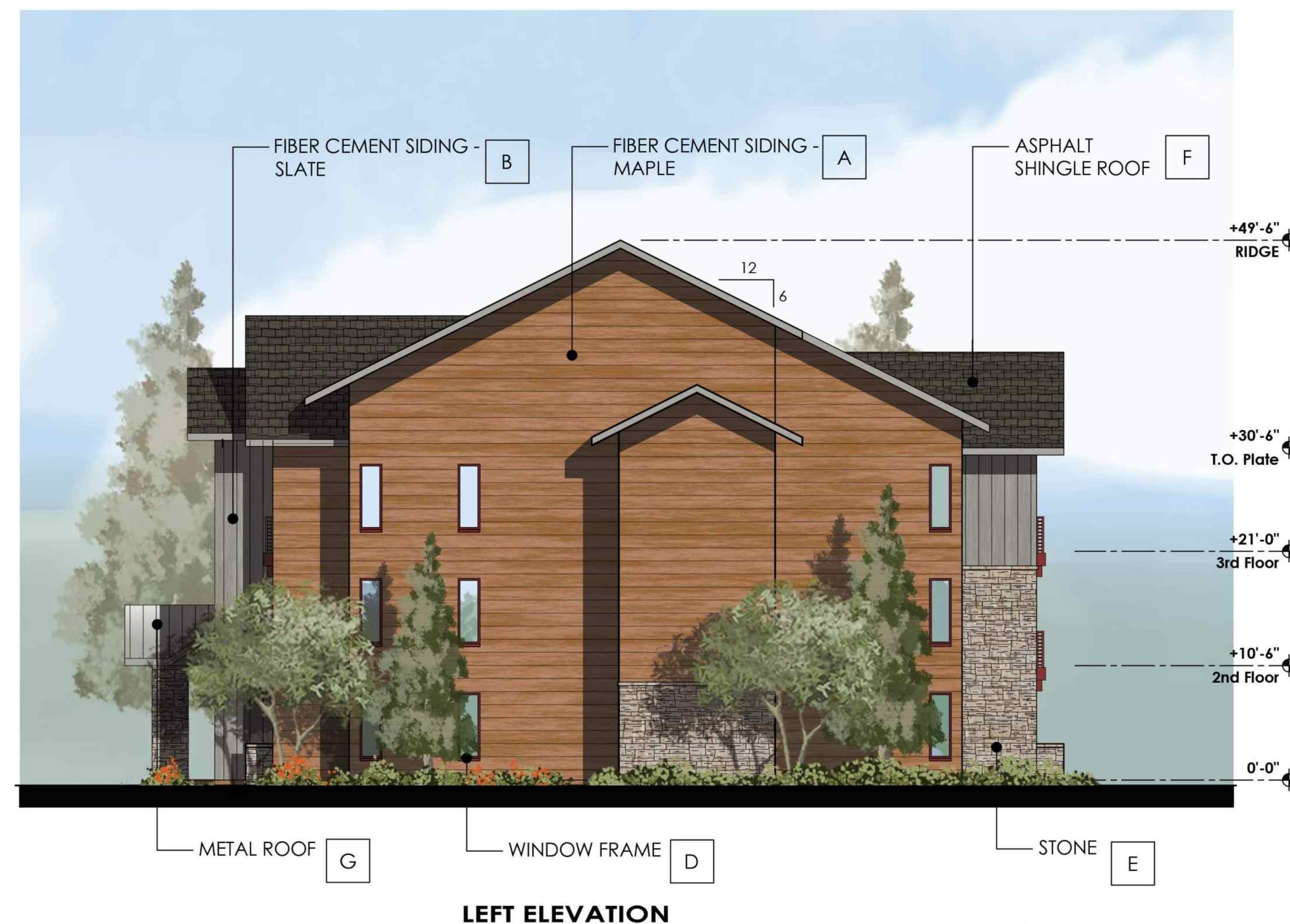
DATA Proj Mgr.  
Dwn By:

BUILDING TYPE 1  
ELEVATIONS

**A3.1.2**



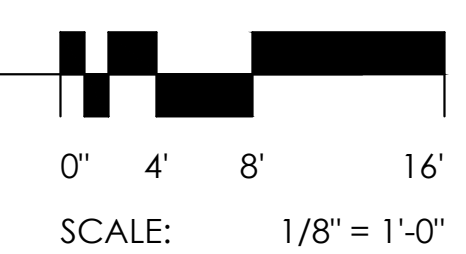
**REAR ELEVATION**



**LEFT ELEVATION**

LOCATION	COLOR	SWATCH
A Fiber Cement Siding Body 1	MFG.: Allura Lap Siding - Horizontal Panels Traditional Texture COLOR: PPG Bleached Maple (PPG1089-5) LRV: 37	[Swatch]
B Fiber Cement Siding Body 2	MFG.: Allura Lap Siding - Vertical Panels Traditional Texture COLOR: PPG Cloudy Slate (PPG0996-4) LRV: 29	[Swatch]
C Fiber Cement Fascia	MFG.: Allura - Plycem Fiber Cement Trim COLOR: Alurra Sterling Gray LRV: 48.2	[Swatch]
D Fiber Cement Trim	MFG.: Allura - Plycem Fiber Cement Trim COLOR: Alurra Autumn Red LRV: 12.6	[Swatch]
E Stone Veneer	MFG.: Coronado - Getty Stone COLOR: Embassy Blend LRV: 45.43	[Swatch]
F Shingle Roof	MFG.: GAF Timberline - Ultra HD Shingles COLOR: Charcoal LRV: n/a	[Swatch]
G Metal Roof	MFG.: MBCI - Slimline Roof Panel COLOR: Signature 300 "Slate Gray" LRV: 18.76	[Swatch]
H Metal Railing	MFG.: Sherwin Williams COLOR: SW 7578 "Borscht" LRV: 6	[Swatch]

**TYPE 1 ELEVATIONS**



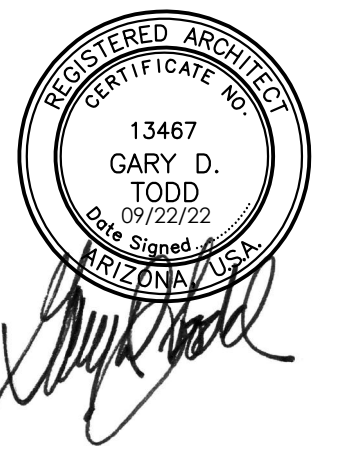
**LIV  
TIMBER SKY**

FLAGSTAFF, AZ

CLIENT **LIV COMMUNITIES**

8950 S 52ND ST, SUITE 115  
TEMPE, AZ 85284

SEAL



CONTACT



**TODD + ASSOCIATES**

CRITICAL THINKING / CREATIVE DESIGN

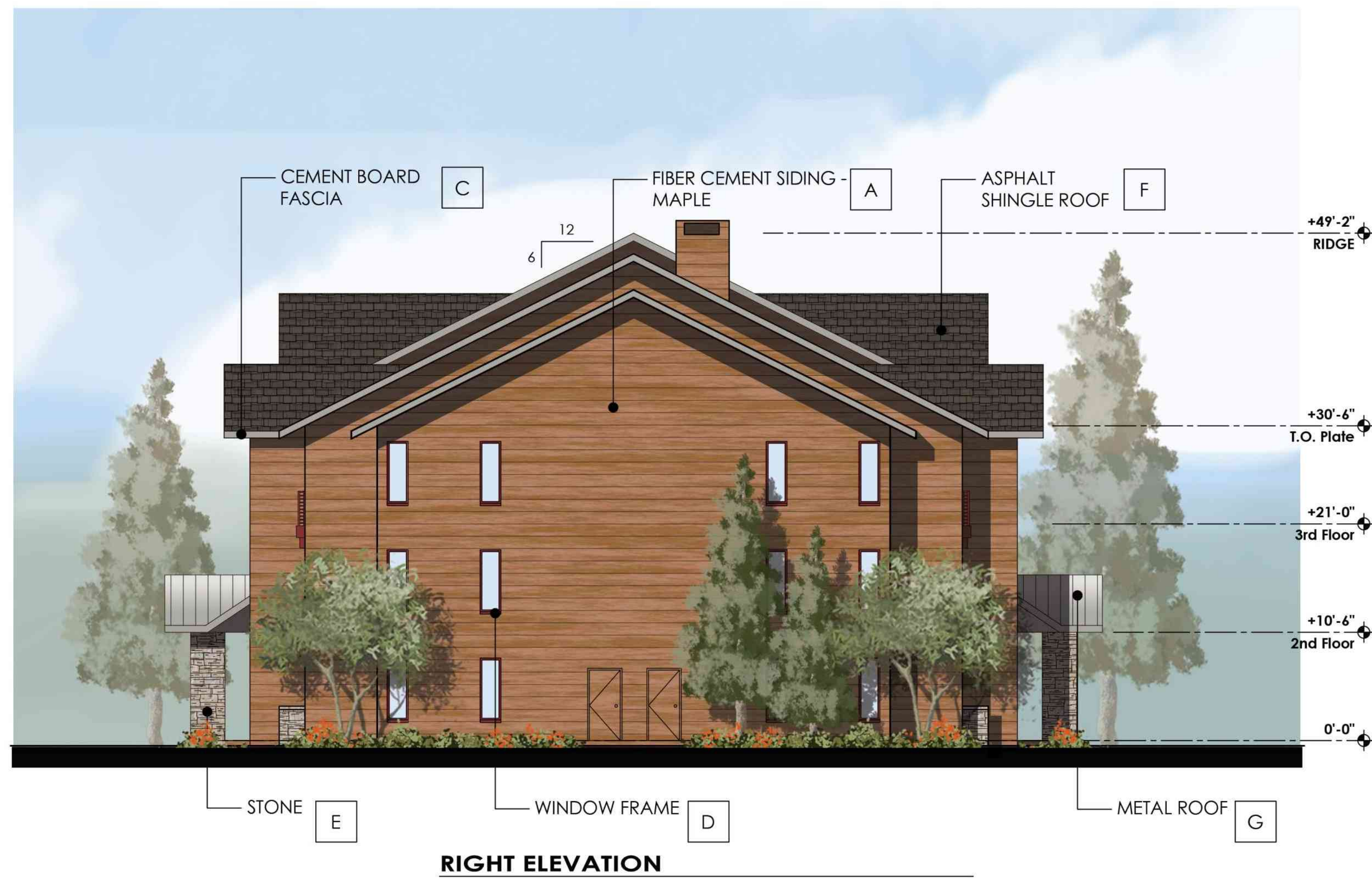
ARCHITECTURE, PLANNING,  
LANDSCAPE ARCHITECTURE.

4019 N. 44TH ST. / PHOENIX, AZ 85018  
602-952-8280 / TODDASSOC.COM

Copyright 2022 Todd & Associates, Inc.



**FRONT ELEVATION**



**RIGHT ELEVATION**

LOCATION	COLOR	SWATCH
A Fiber Cement Siding Body 1	MFG.: Allura Lap Siding - Horizontal Panels Traditional Texture COLOR: PPG Bleached Maple (PPG1089-5) LRV: 37	[Swatch]
B Fiber Cement Siding Body 2	MFG.: Allura Lap Siding - Vertical Panels Traditional Texture COLOR: PPG Cloudy Slate (PPG0996-4) LRV: 29	[Swatch]
C Fiber Cement Fascia	MFG.: Allura - Plycem Fiber Cement Trim COLOR: Alurra Sterling Gray LRV: 48.2	[Swatch]
D Fiber Cement Trim	MFG.: Allura - Plycem Fiber Cement Trim COLOR: Alurra Autumn Red LRV: 12.6	[Swatch]
E Stone Veneer	MFG.: Coronado - Getty Stone COLOR: Embassy Blend LRV: 45.43	[Swatch]
F Shingle Roof	MFG.: GAF Timberline - Ultra HD Shingles COLOR: Charcoal LRV: n/a	[Swatch]
G Metal Roof	MFG.: MBCI - Slimline Roof Panel COLOR: Signature 300 "Slate Gray" LRV: 18.76	[Swatch]
H Metal Railing	MFG.: Sherwin Williams COLOR: SW 7578 "Borscht" LRV: 6	[Swatch]

**TYPE 2 ELEVATIONS**



SCALE: 1/8" = 1'-0"

PHASE  
09-22-2022  
SITE PLAN REVIEW  
SUBMITTAL

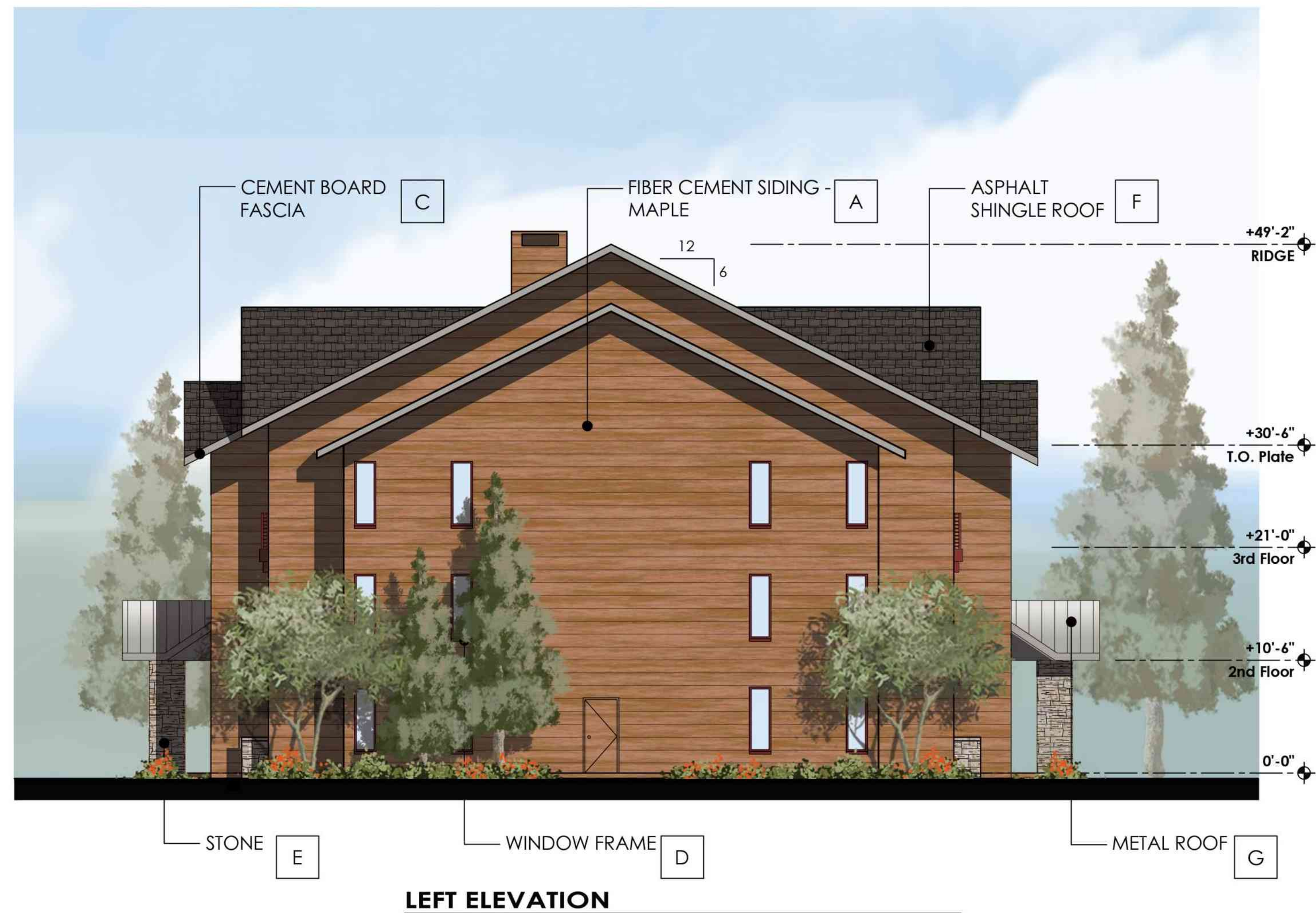
DATA  
Proj Mgr.  
Dwn By:

BUILDING TYPE 2  
ELEVATIONS

**A3.2.1**



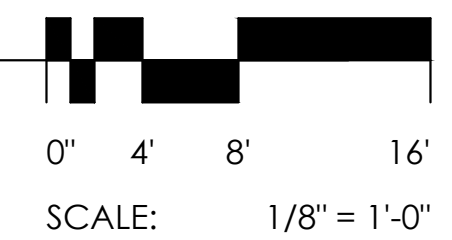
**REAR ELEVATION**



**LEFT ELEVATION**

LOCATION	COLOR	SWATCH
A Fiber Cement Siding Body 1	MFG.: Allura Lap Siding - Horizontal Panels Traditional Texture COLOR: PPG Bleached Maple (PPG1089-5) LRV: 37	[Swatch]
B Fiber Cement Siding Body 2	MFG.: Allura Lap Siding - Vertical Panels Traditional Texture COLOR: PPG Cloudy Slate (PPG0996-4) LRV: 29	[Swatch]
C Fiber Cement Fascia	MFG.: Allura - Plycem Fiber Cement Trim COLOR: Alurra Sterling Gray LRV: 48.2	[Swatch]
D Fiber Cement Trim	MFG.: Allura - Plycem Fiber Cement Trim COLOR: Alurra Autumn Red LRV: 12.6	[Swatch]
E Stone Veneer	MFG.: Coronado - Getty Stone COLOR: Embassy Blend LRV: 45.43	[Swatch]
F Shingle Roof	MFG.: GAF Timberline - Ultra HD Shingles COLOR: Charcoal LRV: n/a	[Swatch]
G Metal Roof	MFG.: MBCI - Slimline Roof Panel COLOR: Signature 300 "Slate Gray" LRV: 18.76	[Swatch]
H Metal Railing	MFG.: Sherwin Williams COLOR: SW 7578 "Borscht" LRV: 6	[Swatch]

**TYPE 2 ELEVATIONS**



PROJECT NO. 22-2003-01  
**LIV  
TIMBER SKY**

CLIENT FLAGSTAFF, AZ  
**LIV COMMUNITIES**  
8950 S 52ND ST, SUITE 115  
TEMPE, AZ 85284

SEAL  
REGISTERED ARCHITECT  
13467  
GARY D. TODD  
09/22/22  
CONTACT  
**TODD + ASSOCIATES**  
CRITICAL THINKING / CREATIVE DESIGN

ARCHITECTURE, PLANNING,  
LANDSCAPE ARCHITECTURE.  
4019 N. 44TH ST. / PHOENIX, AZ 85018  
602-952-8280 / TODDASSOC.COM  
Copyright 2022 Todd & Associates, Inc.

PHASE  
DATA  
09-22-2022  
SITE PLAN REVIEW  
SUBMITTAL

Proj Mgr.  
Dwn By:

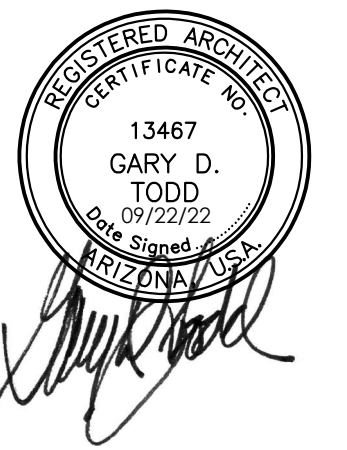
BUILDING TYPE 2  
ELEVATIONS  
**A3.2.2**

**LIV  
TIMBER SKY**

FLAGSTAFF, AZ

CLIENT **LIV COMMUNITIES**

8950 S 52ND ST, SUITE 115  
TEMPE, AZ 85284



ARCHITECTURE, PLANNING,  
LANDSCAPE ARCHITECTURE.

4019 N. 44TH ST. / PHOENIX, AZ 85018  
602-952-8280 / TODDASSOC.COM

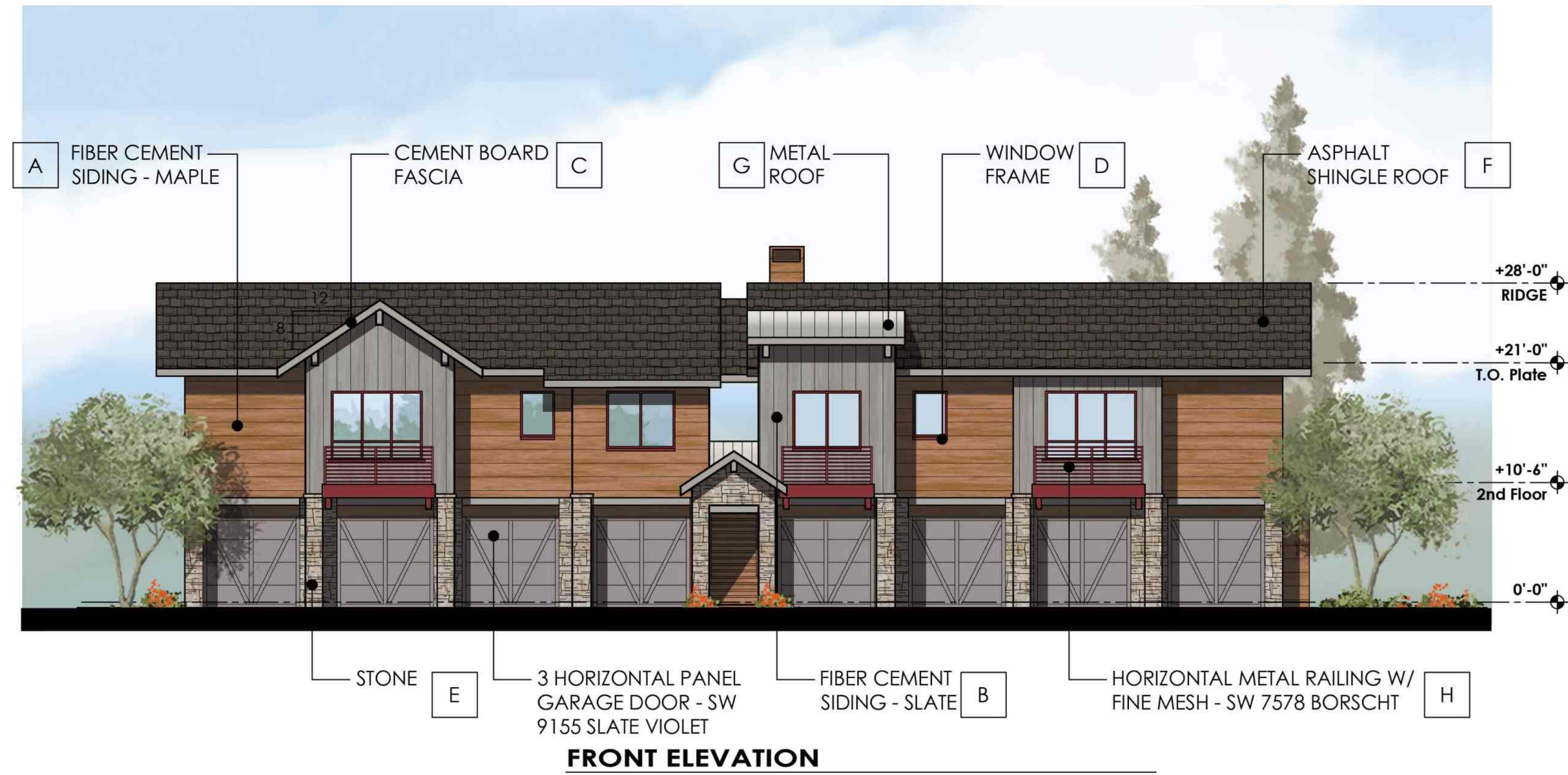
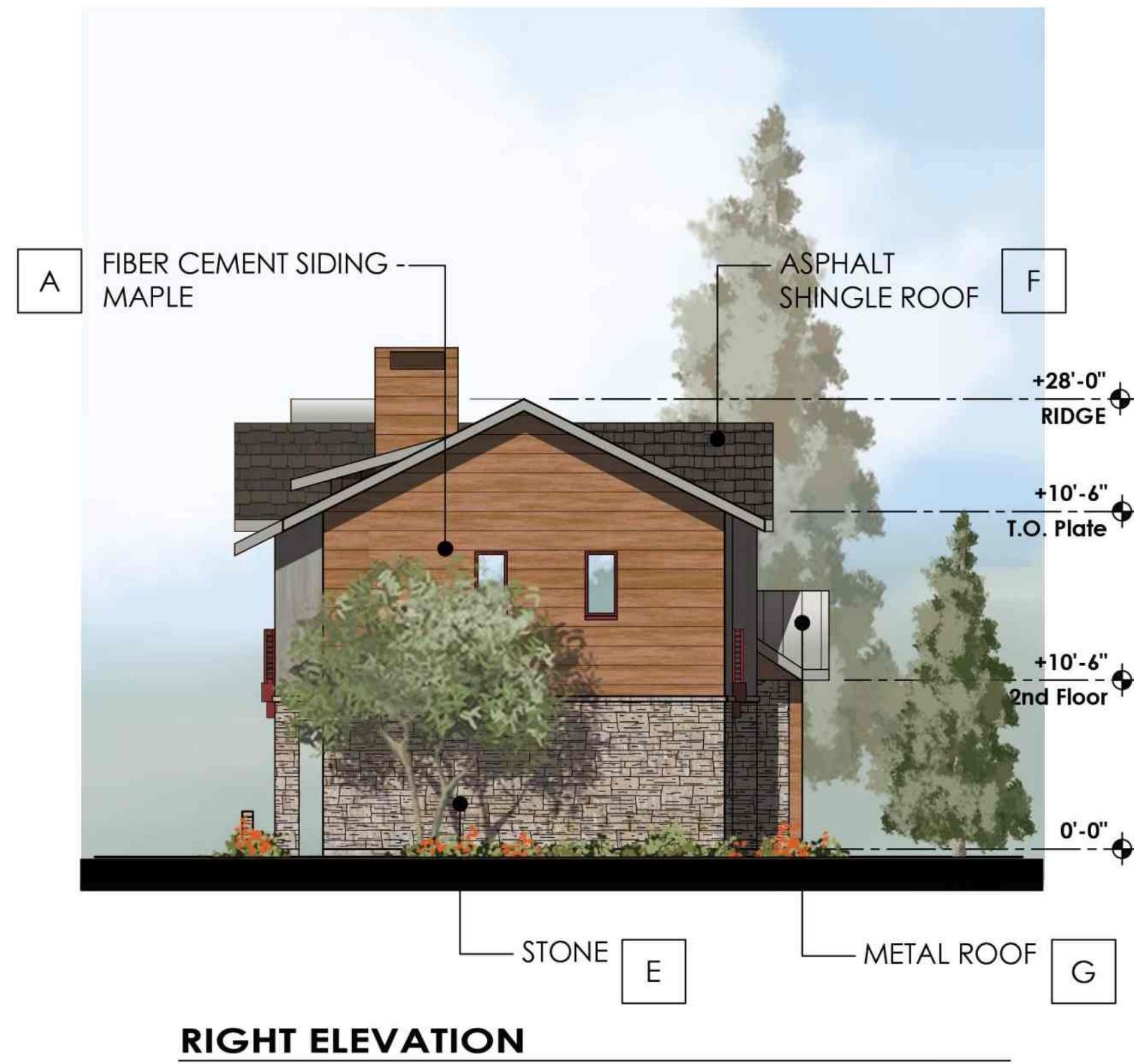
Copyright 2022 Todd + Associates, Inc.

PHASE 09-22-2022  
SITE PLAN REVIEW  
SUBMITTAL

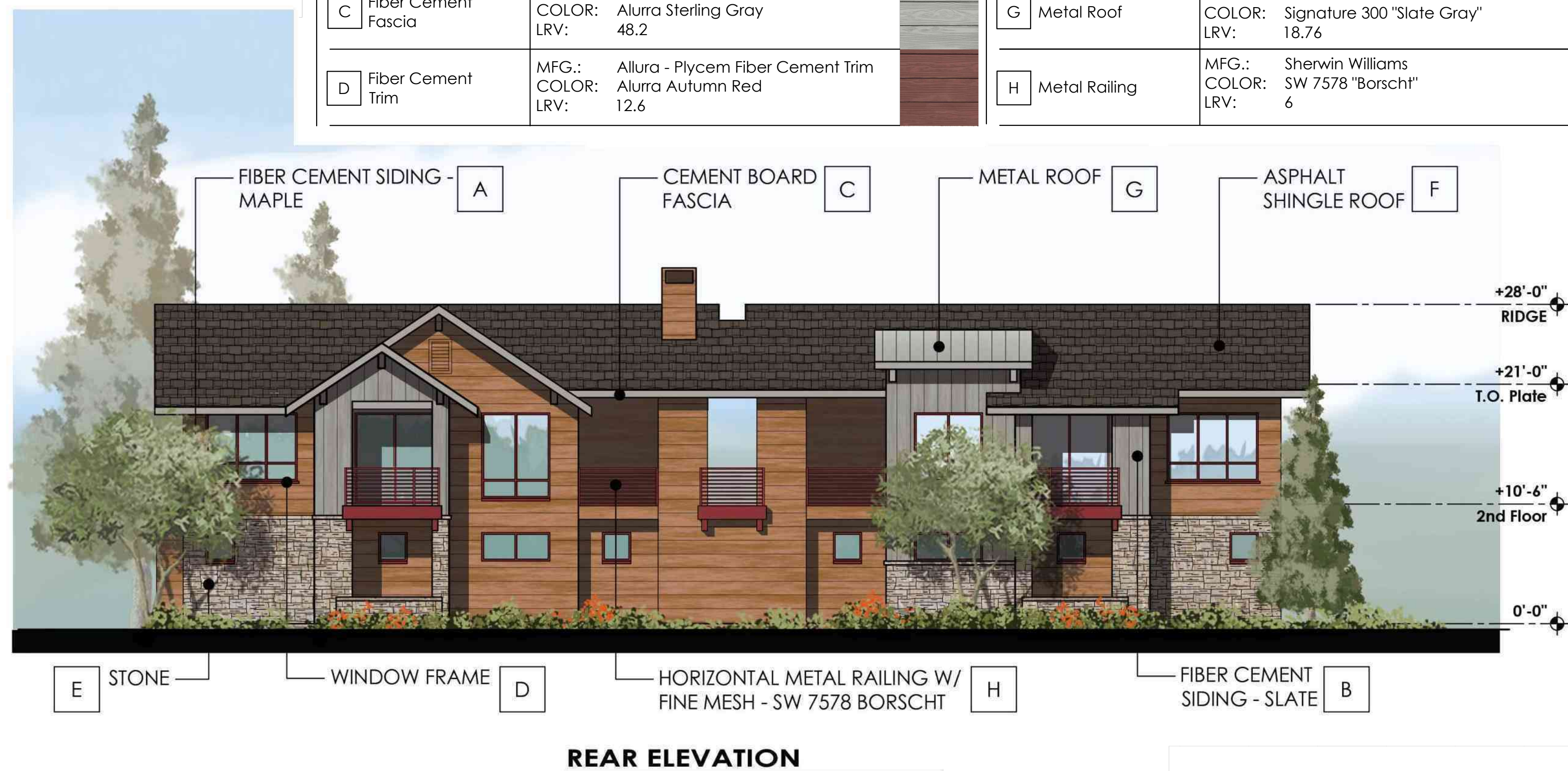
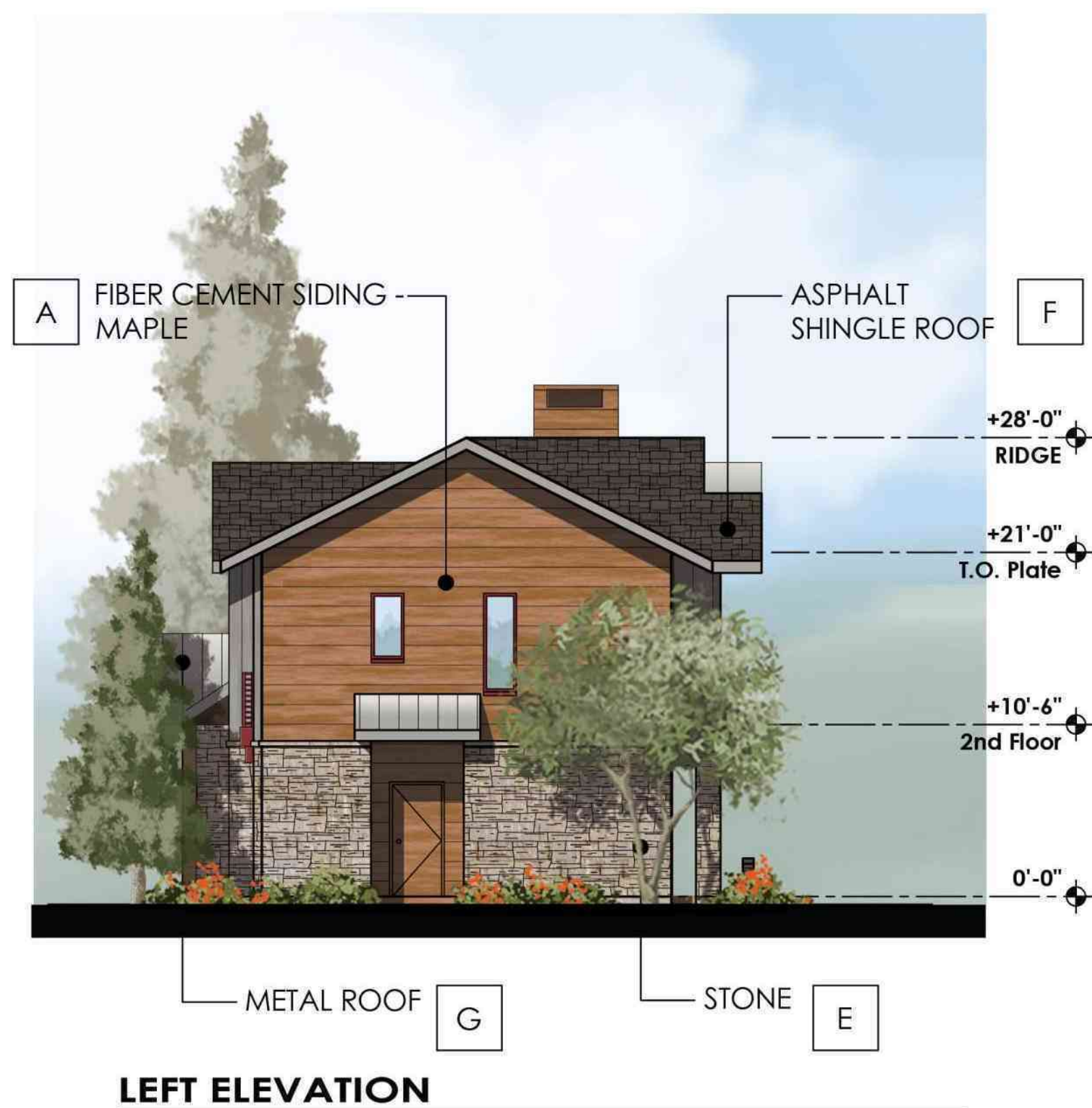
DATA Proj Mgr.  
Dwn By:

BUILDING TYPE 3  
ELEVATIONS

**A3.3.1**



LOCATION	COLOR	SWATCH
A Fiber Cement Siding Body 1	MFG.: Allura Lap Siding - Horizontal Panels Traditional Texture COLOR: PPG Bleached Maple (PPG1089-5) LRV: 37	[Swatch]
B Fiber Cement Siding Body 2	MFG.: Allura Lap Siding - Vertical Panels Traditional Texture COLOR: PPG Cloudy Slate (PPG0996-4) LRV: 29	[Swatch]
C Fiber Cement Fascia	MFG.: Allura - Plycem Fiber Cement Trim COLOR: Alurra Sterling Gray LRV: 48.2	[Swatch]
D Fiber Cement Trim	MFG.: Allura - Plycem Fiber Cement Trim COLOR: Alurra Autumn Red LRV: 12.6	[Swatch]
E Stone Veneer	MFG.: Coronado - Getty Stone COLOR: Embassy Blend LRV: 45.43	[Swatch]
F Shingle Roof	MFG.: GAF Timberline - Ultra HD Shingles COLOR: Charcoal LRV: n/a	[Swatch]
G Metal Roof	MFG.: MBCI - Slimline Roof Panel COLOR: Signature 300 "Slate Gray" LRV: 18.76	[Swatch]
H Metal Railing	MFG.: Sherwin Williams COLOR: SW 7578 "Borsch!" LRV: 6	[Swatch]



**TYPE 3 ELEVATIONS**

