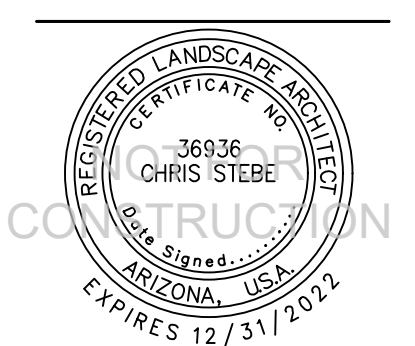


SITE AMENITIES SCHEDULE

DESCRIPTION	QTY.	MANUFACTURER	CONTACT	MODEL NUMBER	COLOR/FINISH	NOTES
BIKE RACK	13	DUMOR SITE FURNISHINGS www.dumor.com OR APPROVED EQUAL	JUSTIN GALION EXERPLAY, INC. (800)457-5444	BIKE RACK 292-00/S-2	ARGENTO	SURFACE MOUNTED. CONTRACTOR SHALL READ AND UNDERSTAND THE INSTRUCTIONS PROVIDED ON THE MANUFACTURER'S WEBSITE PRIOR TO WORK ASSOCIATED WITH INSTALLING THE EQUIPMENT. CONSULT OWNER'S REPRESENTATIVE FOR FINAL LOCATIONS PRIOR TO INSTALL.
BENCH	13	DUMOR SITE FURNISHINGS www.dumor.com OR APPROVED EQUAL	JUSTIN GALION EXERPLAY, INC. (800)457-5444	BENCH 472-601-2AR/S-2	SEATING: IPE STEEL FRAME: ARGENTO	SURFACE MOUNTED. CONTRACTOR SHALL READ AND UNDERSTAND THE INSTRUCTIONS PROVIDED ON THE MANUFACTURER'S WEBSITE PRIOR TO WORK ASSOCIATED WITH INSTALLING THE EQUIPMENT. CONSULT OWNER'S REPRESENTATIVE FOR FINAL LOCATIONS PRIOR TO INSTALL.
TRASH RECEPTACLE	5	DUMOR SITE FURNISHINGS www.dumor.com OR APPROVED EQUAL	JUSTIN GALION EXERPLAY, INC. (800)457-5444	287-32SH 32 GALLON STEEL RECEPTACL WITH SHIELD, SIDE DEPOSIT	ARGENTO	SURFACE MOUNTED. CONTRACTOR SHALL READ AND UNDERSTAND THE INSTRUCTIONS PROVIDED ON THE MANUFACTURER'S WEBSITE PRIOR TO WORK ASSOCIATED WITH INSTALLING THE EQUIPMENT. CONSULT OWNER'S REPRESENTATIVE FOR FINAL LOCATIONS PRIOR TO INSTALL.
FIXED TABLE AND CHAIR SET	2 2	DUMOR SITE FURNISHINGS www.dumor.com OR APPROVED EQUAL	JUSTIN GALION EXERPLAY, INC. (800)457-5444	TABLE 296-42-40I/S-2 42" DIA STEEL TABLE, 4 SEATS, IPE TABLE 296-42-30I/S-2 42" DIA ADA STEEL TABLE, 3 SEATS, IPE	SEATING: IPE STEEL FRAME: ARGENTO SEATING: IPE STEEL FRAME: ARGENTO	SURFACE OR EMBEDMENT MOUNTED PER PLAN. CONTRACTOR SHALL READ AND UNDERSTAND THE INSTRUCTIONS PROVIDED ON THE MANUFACTURER'S WEBSITE PRIOR TO WORK ASSOCIATED WITH INSTALLING THE EQUIPMENT. CONSULT OWNER'S REPRESENTATIVE FOR FINAL LOCATIONS PRIOR TO INSTALL.
PET WASTE STATION	2	DOG WASTE DEPOT www.dogwastepot.com OR APPROVED EQUAL	DOG WASTE DEPOT www.dogwastepot.com (800)678.1612	DOG WASTE STATION MODEL: Depot-006-B-GRN	GREEN	EMBEDMENT MOUNTED PER PLAN. CONTRACTOR SHALL READ AND UNDERSTAND THE INSTRUCTIONS PROVIDED ON THE MANUFACTURER'S WEBSITE PRIOR TO WORK ASSOCIATED WITH INSTALLING THE EQUIPMENT. CONSULT OWNER'S REPRESENTATIVE FOR FINAL LOCATIONS PRIOR TO INSTALL.
PLAYGROUND ASSEMBLY	1	LANDSCAPE STRUCTURES www.landscapestructures.com OR APPROVED EQUAL	JUSTIN GALION EXERPLAY, INC. (800)457-5444	MODEL: 220495A	COLOR SCHEME "BO"	PLAYGROUND EQUIPMENT TO BE INSTALLED BY A LICENSED PROFESSIONAL PER MANUFACTURER'S INSTRUCTIONS.
GARDEN TROUGH	8	BEHLEN COUNTRY www.behlencountry.com OR APPROVED EQUAL	BEHLEN COUNTRY ON-LINE SALES TEAM	226 GALVANIZED ROUND END TANK SKU# 50130048	CORRUGATED STEEL	TANK TO SIT ON FINISH GRADE AND DECOMPOSED GRANITE PAD TO BE PLACED AROUND BASE OF TANK TO ANCHOR TANK IN PLACE. CONTRACTOR SHALL READ AND UNDERSTAND THE INSTRUCTIONS PROVIDED ON THE MANUFACTURER'S WEBSITE PRIOR TO WORK ASSOCIATED WITH INSTALLING THE EQUIPMENT. CONSULT OWNER'S REPRESENTATIVE FOR FINAL LOCATIONS PRIOR TO INSTALL.
CHESS/CHECKER BOARD	32 32	MESA PRECAST www.mesaprecast.com OR APPROVED EQUAL MESA PRECAST www.mesaprecast.com OR APPROVED EQUAL	MESA PRECAST (480)968-5400 MESA PRECAST (480)968-5400	MODEL FC-20-4 MODEL FC-20-4	INTEGRAL COLOR - DAVIS GRAPHITE INTEGRAL COLOR - DAVIS PEWTER	
STUMP JUMP DOG PARK EQUIPMENT	3	Dog On It Parks® dog-on-it-parks.com	Dog On It Parks® dog-on-it-parks.com 877-348-3647	NATUREDOG BIG STUMP JUMP (1) AND LITTLE STUMP JUMP (2)		SURFACE MOUNT, INSTALL PER MANUFACTURES RECOMMENDATIONS
LOG TUNNEL DOG PARK EQUIPMENT UGH	1	Dog On It Parks® dog-on-it-parks.com	Dog On It Parks® dog-on-it-parks.com 877-348-3647	NATUREDOG THROUGH THE LOG		SURFACE MOUNT, INSTALL PER MANUFACTURES RECOMMENDATIONS
BIKE REPAIR STATION	1	DERO DERO.COM	DERO DERO.COM (888) 337-6729	AIR KIT PRIME	POWDER COAT - IRON GRAY	SURFACE MOUNT, INSTALL PER MANUFACTURES RECOMMENDATIONS

MATERIALS SCHEDULE

DESCRIPTION	MANUFACTURER	CONTACT	TYPE / FINISH	NOTES
STANDARD GRAY CONCRETE FLATWORK	N/A	N/A	STANDARD GRAY, MEDIUM BROOM FINISH WITH STANDARD MAG TOOLED SCORE JOINTS	REFER TO CIVIL DRAWINGS FOR MORE INFORMATION
ENHANCED CONCRETE FLATWORK	DAVIS COLORS www.daviscolors.com OR APPROVED EQUAL	DAVIS COLORS www.daviscolors.com 323-265-8323	INTEGRALLY COLORED STANDARD DAVIS COLOR: OMAHA TAN 5084 OR APPROVED EQUAL, MEDIUM BROOM FINISH	REFER TO CIVIL DRAWINGS FOR MORE INFORMATION
DECOMPOSED GRANITE	FLAGSTAFF LANDSCAPE PRODUCTS OR APPROVED EQUAL	FLAGSTAFF LANDSCAPE PRODUCTS 6500 HISTORIC ROUTE 66 E FLAGSTAFF, AZ 86004 FLAGLANDSCAPE.COM	1" TABLE MESA BROWN ROCK MULCH, CLEAN/SCREENED	3" DEPTH MIN. W/ NO WEED BARRIER
STABILIZED DECOMPOSED GRANITE	FLAGSTAFF LANDSCAPE PRODUCTS OR APPROVED EQUAL	FLAGSTAFF LANDSCAPE PRODUCTS 6500 HISTORIC ROUTE 66 E FLAGSTAFF, AZ 86004 FLAGLANDSCAPE.COM	STABILIZED 1/4" MINUS MADISON GOLD DECOMPOSED GRANITE	4" DEPTH MIN. W/ NO WEED BARRIER - SEE DETAIL 8/L-300 FOR MORE INFORMATION
BOULDERS	NORTHERN ARIZONA SANDSTONE northernarizonasandstone.com OR APPROVED EQUAL	NORTHERN ARIZONA SANDSTONE northernarizonasandstone.com (928) 862-0216	MOSS 5'x5'x5', 4'x4'x4', 3'x3'x3'	CONTRACTOR SHALL CONTACT LANDSCAPE ARCHITECT TO APPROVE BOULDERS PRIOR TO FINAL PLACEMENT. SEE DETAIL 9/L-300 FOR MORE DETAIL
STONE VENEER	CORONADO STONE	www.coronado.com (602)732-6558	MODEL: GETTY STONE COLOR: EMBASSY BLEND	INSTALL PER ARCHITECT'S SPECIFICATIONS. STONE VENEER AND GROUT SHALL MATCH STONE VENEER ON BUILDING.
STEEL EDGER	COLMET www.colmet.corp OR APPROVED EQUAL	www.colmet.corp	3/8" THICK, 4" DEPTH, POWDER COATED BROWN	
CONCRETE LANDSCAPE EDGER	N/A	N/A	STANDARD GRAY OR OMAHA TAN 5084 MEDIUM BROOM FINISH WITH STANDARD MAG TOOLED SCORE JOINTS	
ENGINEERED WOOD FIBER	ZEAGER BROS. INC ZEAGER.COM OR APPROVED EQUAL	ZEAGER BROS. INC ZEAGER.COM 800-346-8524	12" DEPTH	
FLAGSTONE	NORTHERN ARIZONA SANDSTONE northernarizonasandstone.com OR APPROVED EQUAL	NORTHERN ARIZONA SANDSTONE northernarizonasandstone.com (928) 862-0216	2"-4" MOSS SELECT	INSTALL PER SUPPLIERS SPECIFICATIONS. GROUT SHALL MATCH STONE VENEER ON BUILDING.
GRASSPAVE	INVISIBLE STRUCTURES INVISIBLESTRUCTURES.COM	BORDER CONSTRUCTION SPECIALTIES (602) 437-1900 WWW.BORDERCORP.COM	GRASSPAVE2	INSTALL PER MANUFACTURER SPECIFICATIONS WITH FESCUE TURF.
ARTIFICIAL TURF	FOREVERLAWN® FOREVERLAWN.COM	FOREVER LAWN DANTE ANGELO RAFFIN DANTE@FOREVERLAWN.COM 330.499.8873	K9 GRASS	INSTALL PER MANUFACTURER SPECIFICATIONS.
POOL COPING	BELGARD	KELLY O'SHAUGHNESSY 480-433-0564	STYLE: LAGUNA POOL COPING COLOR: BELLA	INSTALL PER MANUFACTURER SPECIFICATIONS.
SPA HANDRAIL	SRSMITH	www.srsmith.com	SPA RAIL	INSTALL PER MANUFACTURER SPECIFICATIONS.
SPA WATERLINE TILE AND WATER WALL FACING TILE	MSI STONE	www.srsmith.com	STYLE: AKAYA COPPER INTERLOCKING GLASS TILE	INSTALL PER MANUFACTURER SPECIFICATIONS.
SPA INTERIOR FINISH	PEBBLETEC OR APPROVED BY CLIENT	N/A	COLOR: BLUE LAGOON	INSTALL PER MANUFACTURER SPECIFICATIONS.
WATERWALL CAP	ANASAZI STONE	www.anasazistone.com	TYPE: QUARTZITE COLOR: BLACK GOLD	INSTALL PER SUPPLIERS SPECIFICATIONS. GROUT SHALL MATCH STONE VENEER ON BUILDING.
WATER WALL SCUPPER	BOBE WATER AND FIRE	www.bobewaterandfire.com	MODEL: WEDGE WS-12 COLOR: STAINLESS STEEL QUANTITY: 3	INSTALL PER SUPPLIERS SPECIFICATIONS.



DATE:

4/20/2021 1ST CONCEPT PLAN SUBMITTAL

6/9/2022 2ND CONCEPT PLAN SUBMITTAL

08/29/22 1ST SITE PLAN SUBMITTAL

11/22/22 2ND SITE PLAN RESUBMITTAL

01/05/23 3RD SITE PLAN RESUBMITTAL

02/15/23 4TH SITE PLAN RESUBMITTAL



SITE LANDSCAPE CALCULATIONS

ITEM	REQUIRED	PROVIDED	NOTES
R.O.W. - WOODY MOUNTAIN ROAD (TOTAL LINEAR FEET: 740 (including driveway); TOTAL LANDSCAPE AREA: 11,108 SF)			
TREES: 1 PER 45 LINEAR FEET (2" CAL MIN.**)	16	17	
SHRUBS: 25% (3 GAL MIN)	2,777 SF	2,779 SF	
GROUND COVER: 25%	2,777 SF	2,781 SF	
R.O.W. - W. ROUTE 66 (TOTAL LINEAR FEET: 733 (including driveway); TOTAL LANDSCAPE AREA: 12,170 SF)			
TREES: 1 PER 45 LINEAR FEET (2" CAL MIN.**)	16	16	
SHRUBS: 25% (3 GAL MIN)	3,043 SF	3,046 SF	
GROUND COVER: 25%	3,043 SF	3,081 SF	
STREET BUFFER - WOODY MOUNTAIN ROAD (TOTAL LINEAR FEET: 740 (including driveway))			
TREES: 1 PER 25 LINEAR FEET (15 GALLON MIN.**)	30	30*	TOTAL INCLUDES 29 NURSERY TREES AND 1 EXISTING TREE @18" CALIPER.
SHRUBS: 2 PER TREE	60	60	PLANT QUANTITIES CALCULATION OVERLAPS WITH BUILDING 2 & 4 BUILDING FOUNDATION FOR 374 FEET.
GROUND COVER: 2 PER TREE	60	60	
STREET BUFFER - W. ROUTE 66 (TOTAL LINEAR FEET: 733 (including driveway))			
TREES: 1 PER 25 LINEAR FEET (15 GALLON MIN.**)	29	29	PLANT QUANTITIES CALCULATION OVERLAPS WITH BUILDING 2 & 4 BUILDING FOUNDATION FOR 374 FEET.
SHRUBS: 2 PER TREE	58	63	
GROUND COVER: 2 PER TREE	58	58	
PARKING AREA (TOTAL PARKING SPACES: 390)			
TREES: 2 PER 8 PARKING SPACES (15 GALLON MIN.**)	98	98*	TOTAL INCLUDES 95 NURSERY TREES AND 3 EXISTING TREES (1 @ 18" CALIPER, 1 @ 20" CALIPER, 1 @ 24" CALIPER)
SHRUBS: 2 PER TREE	196	294	
GROUND COVER: 2 PER TREE	196	202	
MINIMUM LANDSCAPED AREA: (30 SF PER SPACE)	11,700 SF	29,045 SF	
PERIPHERAL BUFFER (TOTAL LINEAR FEET: 1,518)			
TREES: 1 PER 25 LINEAR FEET (15 GALLON MIN.**)	61	61	
SHRUBS: 2 PER TREE	122	124	
GROUND COVER: 2 PER TREE	122	122	
BUILDING FOUNDATION - CLUBHOUSE (TOTAL LINEAR FEET: 461)			
TREES: 1 PER 25 LINEAR FEET (15 GALLON MIN.**)	18	19	
SHRUBS: 2 PER TREE	36	87	
GROUND COVER: 2 PER TREE	36	40	
BUILDING FOUNDATION - FITNESS (TOTAL LINEAR FEET: 266)			
TREES: 1 PER 25 LINEAR FEET (15 GALLON MIN.**)	11	12	
SHRUBS: 2 PER TREE	22	64	
GROUND COVER: 2 PER TREE	22	31	
BUILDING FOUNDATION - RESIDENCE BUILDING 1 (TOTAL LINEAR FEET: 460)			
TREES: 1 PER 25 LINEAR FEET (15 GALLON MIN.**)	11	11	PLANT QUANTITIES CALCULATION OVERLAPS WITH WOODY MOUNTAIN ROAD STREET BUFF FOR 187 FEET.
SHRUBS: 2 PER TREE	22	48	
GROUND COVER: 2 PER TREE	22	35	
BUILDING FOUNDATION - RESIDENCE BUILDING 2 (TOTAL LINEAR FEET: 460)			
TREES: 1 PER 25 LINEAR FEET (15 GALLON MIN.**)	11	15	PLANT QUANTITIES CALCULATION OVERLAPS WITH ROUTE 66 STREET BUFF FOR 187 FEET.
SHRUBS: 2 PER TREE	22	42	
GROUND COVER: 2 PER TREE	22	30	
BUILDING FOUNDATION - RESIDENCE BUILDING 3 (TOTAL LINEAR FEET: 460)			
TREES: 1 PER 25 LINEAR FEET (15 GALLON MIN.**)	18	18	
SHRUBS: 2 PER TREE	36	73	
GROUND COVER: 2 PER TREE	36	37	
BUILDING FOUNDATION - RESIDENCE BUILDING 4 (TOTAL LINEAR FEET: 460)			
TREES: 1 PER 25 LINEAR FEET (15 GALLON MIN.**)	11	11	PLANT QUANTITIES CALCULATION OVERLAPS WITH ROUTE 66 STREET BUFF FOR 187 FEET.
SHRUBS: 2 PER TREE	22	37	
GROUND COVER: 2 PER TREE	22	28	
BUILDING FOUNDATION - RESIDENCE BUILDING 7 (TOTAL LINEAR FEET: 460)			
TREES: 1 PER 25 LINEAR FEET (15 GALLON MIN.**)	18	18	
SHRUBS: 2 PER TREE	36	69	
GROUND COVER: 2 PER TREE	36	38	
BUILDING FOUNDATION - RESIDENCE BUILDING 11 (TOTAL LINEAR FEET: 460)			
TREES: 1 PER 25 LINEAR FEET (15 GALLON MIN.**)	18	18	
SHRUBS: 2 PER TREE	36	63	
GROUND COVER: 2 PER TREE	36	37	
BUILDING FOUNDATION - RESIDENCE BUILDING 12 (TOTAL LINEAR FEET: 460)			
TREES: 1 PER 25 LINEAR FEET (15 GALLON MIN.**)	18	18	
SHRUBS: 2 PER TREE	36	55	
GROUND COVER: 2 PER TREE	36	37	
BUILDING FOUNDATION - RESIDENCE BUILDING 13 (TOTAL LINEAR FEET: 300)			
TREES: 1 PER 25 LINEAR FEET (15 GALLON MIN.**)	12	12	
SHRUBS: 2 PER TREE	24	46	
GROUND COVER: 2 PER TREE	24	24	
BUILDING FOUNDATION - RESIDENCE BUILDING 14 (TOTAL LINEAR FEET: 460)			
TREES: 1 PER 25 LINEAR FEET (15 GALLON MIN.**)	11	15*	TOTAL INCLUDES 14 NURSERY TREES AND 1 EXISTING TREE @ 18" CALIPER.
SHRUBS: 2 PER TREE	22	56	PLANT QUANTITIES CALCULATION OVERLAPS WITH WOODY MOUNTAIN ROAD STREET BUFF FOR 187 FEET.
GROUND COVER: 2 PER TREE	22	34	
BUILDING FOUNDATION - BUILDINGS 5, 6, 8, 9, & 10 (TOTAL LINEAR FEET: 705)			
TREES: 1 PER 25 LINEAR FEET (15 GALLON MIN.**)	1	1	PLANT QUANTITIES CALCULATION OVERLAPS WITH PLANT IN THE PERIPHERAL BUFF & PARKING LANDSCAPE FOR 682 FEET.
SHRUBS: 2 PER TREE	2	3	
GROUND COVER: 2 PER TREE	2	4	
BUILDING FOUNDATION - DETACHED GARAGES (TOTAL LINEAR FEET: 414)			
TREES: 1 PER 25 LINEAR FEET (15 GALLON MIN.**)	2	2	PLANT QUANTITIES CALCULATION OVERLAPS WITH PLANT IN THE PERIPHERAL BUFF & PARKING LANDSCAPE FOR 370 FEET.
SHRUBS: 2 PER TREE	4	5	
GROUND COVER: 2 PER TREE	4	4	

* EACH EXISTING TREE THAT IS 6"-10" IN DIAMETER AT BREAST HEIGHT (DBH) MAY SUBSTITUTE FOR THE REQUIREMENT OF ONE LANDSCAPE TREE. EACH EXISTING TREE THAT IS 10"-18" DBH MAY SUBSTITUTE FOR THE REQUIREMENT OF TWO LANDSCAPE TREES. EACH EXISTING TREE THAT IS 18" DBH MAY SUBSTITUTE FOR THE REQUIREMENT OF THREE LANDSCAPE TREES. FOR EACH EXISTING TREE RETAINED IN A LANDSCAPE AREA, THE REQUIREMENT FOR SHRUBS AND GROUNDCOVERS ASSOCIATED WITH THAT TREE WILL BE WAIVED. (CITY OF FLAGSTAFF LANDSCAPING STANDARDS SECTION 10-60.60.050.A)

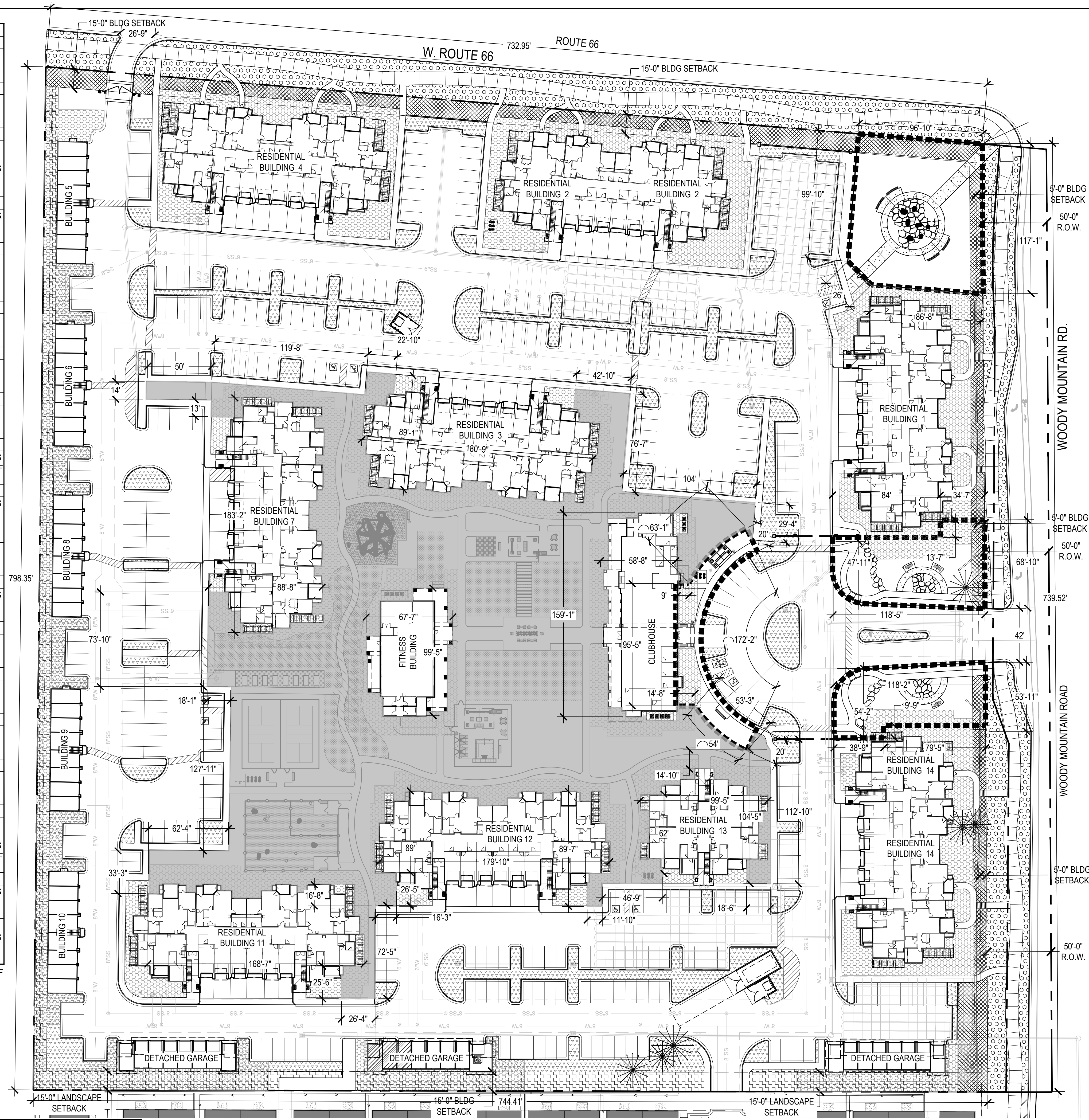
** FOR ON SITE PLANTS, EACH PROPOSED NATIVE TREE TO BE 15 GAL MIN., EACH PROPOSED NON-NATIVE TREE TO BE 6" TALL OR 2" CAL MIN. FOR OFF SITE PLANTS, PROPOSED SINGLE TRUNK TREES TO BE 2" CAL MIN. AND CONIFER TREES TO BE 6" TALL. (CITY OF FLAGSTAFF CHAPTER 13-18 LANDSCAPING STANDARDS FOR RIGHTS-OF-WAY DIVISIONS: 13-18-003)

OVERALL LANDSCAPE CALCULATIONS				
	ON SITE		RIGHTS-OF-WAY	
	REQUIRED	PROPOSED	REQUIRED	PROPOSED
TREE	378	460	32	33
SHRUB	756	1,743	5,820 SF	5,820 SF
GC	756	1,049	5,820 SF	5,862 SF

OPEN SPACE TREES, PLANTS AND GROUND COVER QUANTITIES ARE NOT INCLUDED IN THIS OVERALL LANDSCAPE CALCULATION.

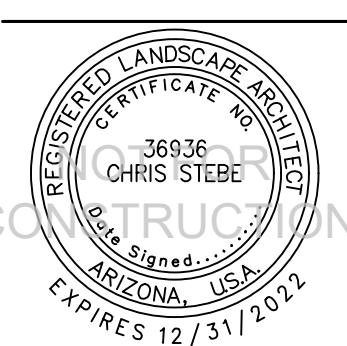
SITE DEVELOPMENT REQUIREMENTS			GROSS / NET AREA: 13.01 ac (567,020 sf)	
	REQUIRED	PROVIDED	REQUIRED	PROVIDED
PEDESTRIAN AMENITY SPACE/CIVIC SPACE	28,351 sf (5.0% OF TOTAL AREA)	28,360 sf		
OPEN SPACE	85,053 sf (15.0% OF TOTAL AREA)	91,109 sf		

OASIS CALCULATION	
PROPOSED:	18,400 SF (3.24% OF TOTAL AREA) - TURF: 14,947 SF; ARTIFICIAL TURF: 3,453 SF
MAX ALLOWABLE AREA:	28,357 SF (5% OF TOTAL AREA)



LEGEND

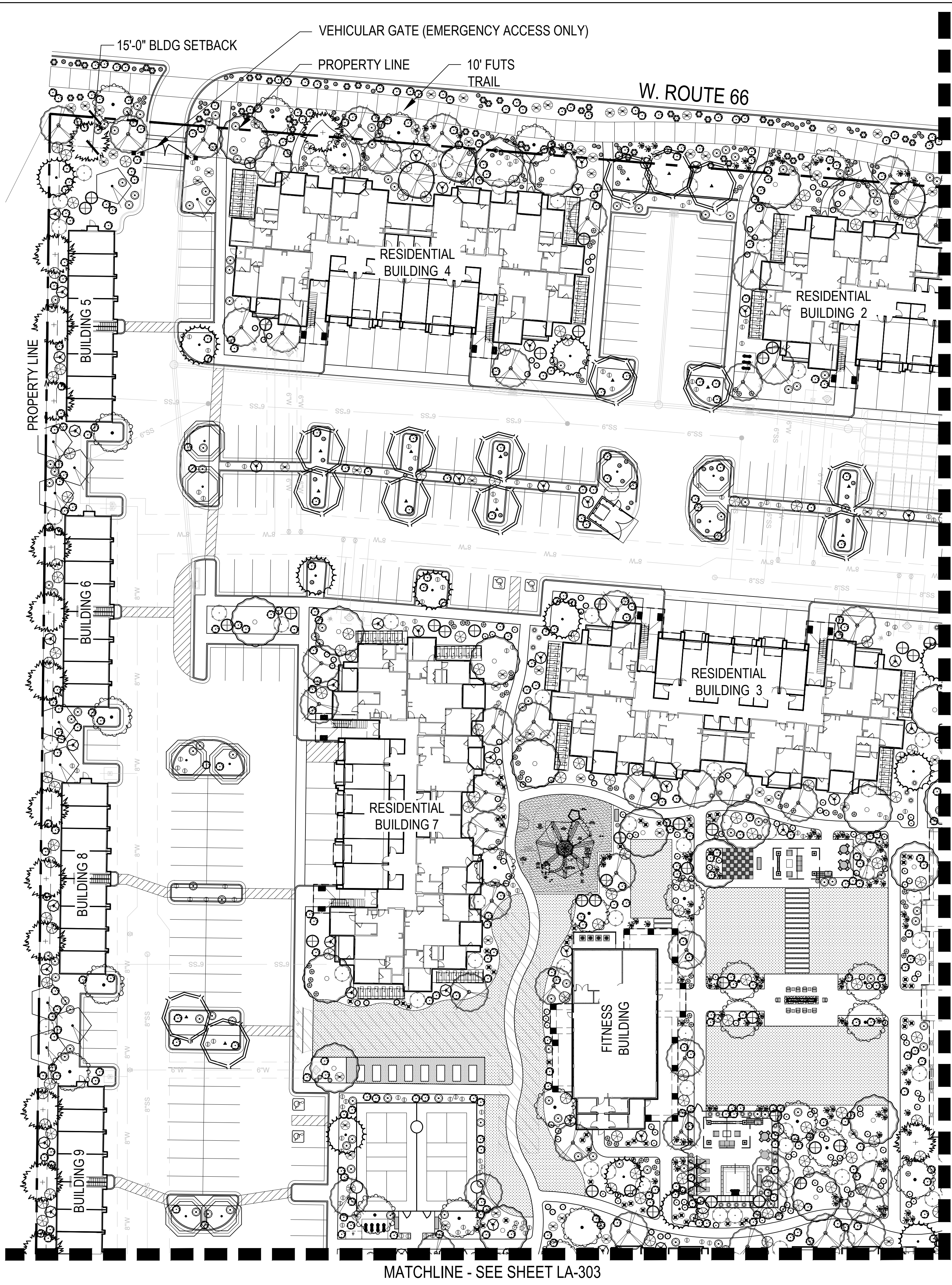
- RIGHT OF WAY
- STREET BUFFER
- PERIPHERAL BUFFER
- BUILDING FOUNDATION
- PARKING LOT LANDSCAPING
- CIVIC SPACE
- OPEN SPACE



DATE:

4/20/2021	1ST CONCEPT PLAN SUBMITTAL
6/9/2022	2ND CONCEPT PLAN SUBMITTAL
08/29/22	1ST SITE PLAN SUBMITTAL
11/22/22	2ND SITE PLAN RESUBMITTAL
01/05/23	3RD SITE PLAN RESUBMITTAL
02/15/23	4TH SITE PLAN RESUBMITTAL

CHECKED BY: AB CS
 DRAWN BY: DP KW



TOPDRESS SCHEDULE

- TYPE 1 - DECOMPOSED GRANITE
ALL PERIMETER LANDSCAPE AREAS
SOURCE: FLAGSTAFF LANDSCAPE PRODUCTS OR APPROVED EQUAL
SIZE: 1" CLEAN/SCREENED
COLOR: TABLE MESA BROWN
- TYPE 2 - ENGINEERED WOOD FIBER
SOURCE: ZEAGER BROS. INC
TYPE: WOOD CARPET
- TYPE 3 - TURF
TYPE: FESCUE SOD
- TYPE 4 - TURF WITH GRASS PAVE 2
TYPE: FESCUE SOD
VEHICULAR RATED
- TYPE 5 - ARTIFICIAL TURF - DOG PARK
SUPPLIER: FOREVER LAWN
TYPE: K9 GRASS OR APPROVED EQUAL
- TYPE 6 - STABILIZED DG
SUPPLIER: FLAGSTAFF LANDSCAPE PRODUCTS OR APPROVED EQUAL
SIZE: 1/4" MINUS
COLOR: MADISON GOLD
- TYPE 7 - BOULDERS
SOURCE: FLAGSTAFF LANDSCAPE PRODUCTS OR APPROVED EQUAL
SIZE: SEE HARDSCAPE PLAN FOR BOULDER SIZES

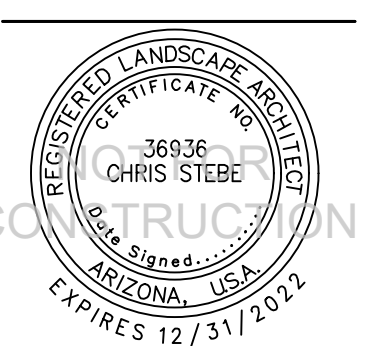
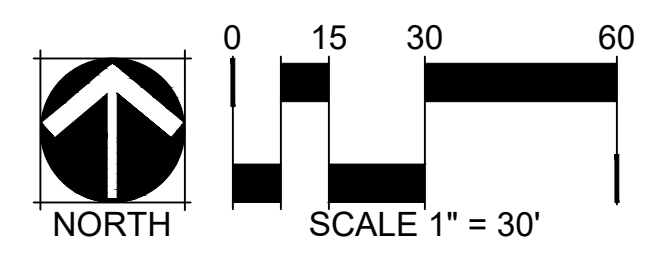
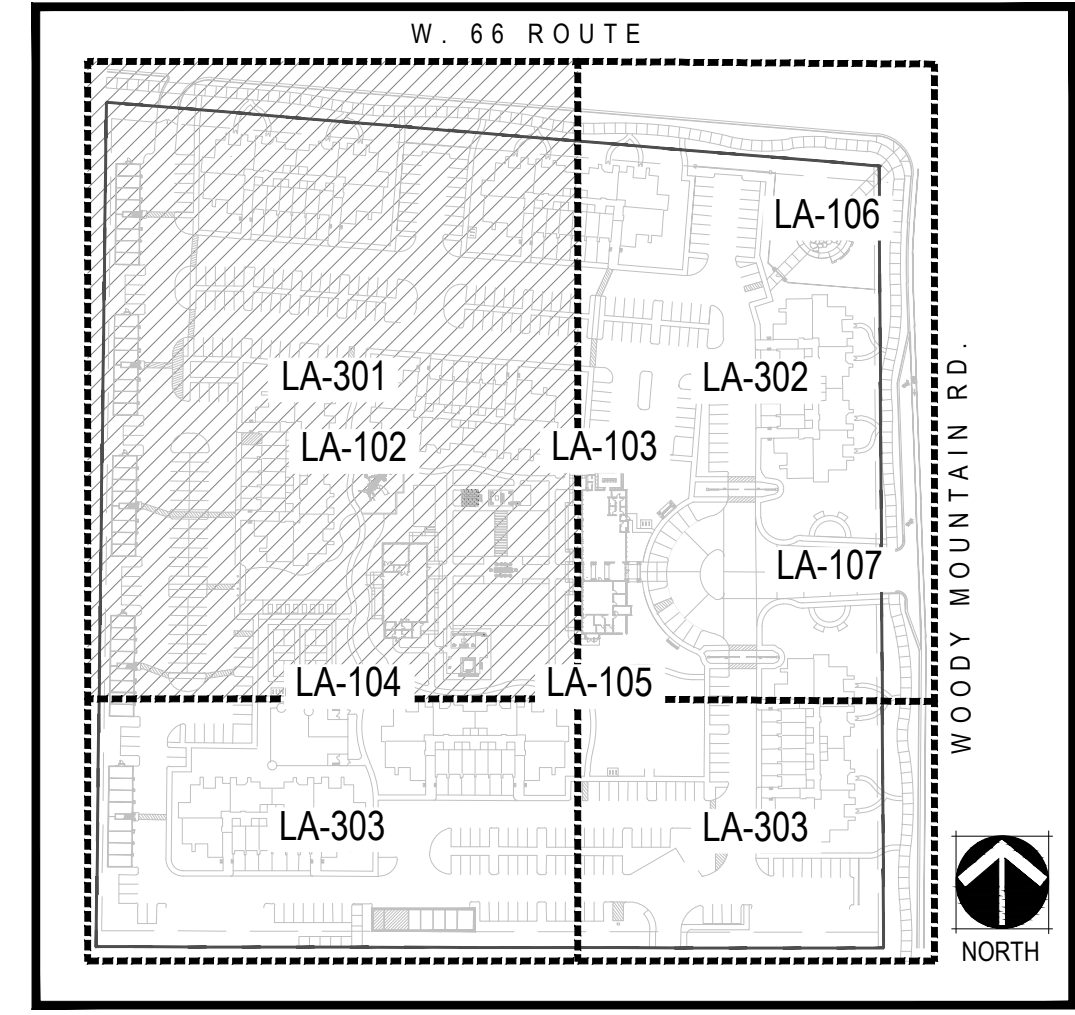
NOTES:
1. CONTRACTOR TO PROVIDE SAMPLES OF ALL TOPDRESS MATERIALS TO LANDSCAPE ARCHITECT FOR REVIEW AND APPROVAL PRIOR TO INSTALLATION.
2. INSTALL 2" DEPTH OF DECOMPOSED GRANITE IN ALL PLANTING AREAS.

PLANT LEGEND

EXISTING TREES	BOTANICAL / COMMON NAME	SIZE	EST'D MAT. SIZE	NATIVE	SPACING	ONSITE QTY	ROW QTY
	EXISTING TREE TO REMAIN					6	
	DECIDUOUS CANOPY	BOTANICAL / COMMON NAME	SIZE	EST'D MAT. SIZE	NATIVE	SPACING	ONSITE QTY
	Acer x freemanii Autumn Blaze Maple	2" CAL, B&B	45' H x 30' W	NAT.	AS SHOWN	39	
	Gleditsia triacanthos inermis 'Skyline'™ Skyline Thornless Honey Locust	2" CAL, B&B	45' H x 35' W	NAT.	AS SHOWN	27	
	Populus x acuminata Lanceleaf Poplar	2" CAL, B&B	50' H x 40' W	NAT.	AS SHOWN	23	3
	DECIDUOUS ORNAMENTAL	BOTANICAL / COMMON NAME	SIZE	EST'D MAT. SIZE	NATIVE	SPACING	ONSITE QTY
	Cercis occidentalis Western Redbud	2.5" CAL, B&B	15' H x 15' W			106	7
	Populus tremuloides Quaking Aspen	2" CAL, B&B	50' H x 20' W	Y	AS SHOWN	24	7
	Prunus americana American Plum	2.5" CAL, B&B	20' H x 20' W	NAT.		21	
	Robinia x ambigua 'Purple Robe' Pink Flowering Locust	2.5" CAL, B&B	30' H x 20' W	NAT.		59	13
	EVERGREEN TREES	BOTANICAL / COMMON NAME	SIZE	EST'D MAT. SIZE	NATIVE	SPACING	ONSITE QTY
	Juniperus scopulorum Rocky Mountain Juniper	6' HT, B&B	15' H x 6' W	Y	AS SHOWN	97	
	Picea pungens 'Glauca' Colorado Blue Spruce	6' HT, B&B	40' H x 20' W	NAT.	AS SHOWN	21	
	Pinus ponderosa Ponderosa Pine	6' HT, B&B	60' H x 25' W	Y	AS SHOWN	37	3
	DECIDUOUS SHRUBS - LARGE 7'-9'	BOTANICAL / COMMON NAME	SIZE	EST'D MAT. SIZE	NATIVE	SPACING	ONSITE QTY
	Cornus stolonifera Red Twig Dogwood	5 gal	8' H x 8' W	NAT.		140	17
	DECIDUOUS SHRUBS - MEDIUM 5'-7'	BOTANICAL / COMMON NAME	SIZE	EST'D MAT. SIZE	NATIVE	SPACING	ONSITE QTY
	Caryopteris x clandonensis Blue Mist Spirea	5 gal	3' H x 6' W	NAT.		255	
	Prunus besseyi 'Pawnee Buttes' Pawnee Buttes Sandcherry	5 gal	2' H x 6' W	Y		136	68
	Rhus trilobata 'Autumn Amber' * Autumn Amber Sumac	5 gal	2' H x 6' W	NAT.		52	
	DECIDUOUS SHRUBS - SMALL 2'-5'	BOTANICAL / COMMON NAME	SIZE	EST'D MAT. SIZE	NATIVE	SPACING	ONSITE QTY
	Euonymus alatus 'Compactus' Compact Burning Bush	5 gal	3' H x 3' W	Y		85	
	Perovskia abrotanoides * Russian Sage	5 gal	4' H x 4' W	NAT.		332	57
	Potentilla fruticosa 'Gold Drop' Gold Drop Potentilla	3 gal	3' H x 3' W	Y		353	5
	EVERGREEN SHRUBS	BOTANICAL / COMMON NAME	SIZE	EST'D MAT. SIZE	NATIVE	SPACING	ONSITE QTY
	Arctostaphylos x coloradoensis 'Panchito' Panchito Manzanita	2 gal	1' H x 3' W	Y		161	
	Mahonia aquifolium Oregon Grape	5 gal	1' H x 6' W	NAT.			112
	ORNAMENTAL GRASSES	BOTANICAL / COMMON NAME	SIZE	EST'D MAT. SIZE	NATIVE	SPACING	ONSITE QTY
	Bouteloua gracilis 'Blonde Ambition' *** Blonde Ambition Blue Grama Grass	3 gal	3' H x 3' W	Y		110	59
	Muhlenbergia rigens Deer Grass	1 gal	4' H x 4' W	Y		58	
	Panicum virgatum 'Shenandoah' Shenandoah Switch Grass	1 gal	3' H x 3' W	Y		31	
	Schizachyrium scoparium Little Bluestem	1 gal	3' H x 3' W	Y		60	
	PERENNIALS & GROUNDCOVERS	BOTANICAL / COMMON NAME	SIZE	EST'D MAT. SIZE	NATIVE	SPACING	ONSITE QTY
	Achillea tomentosa Woolly Yarrow	1 gal	6" H x 12" W	Y		9	25
	Cerastium tomentosum Snow in Summer	1 gal	1' H x 3' W	NAT.		225	13
	Festuca glauca Blue Fescue	1 gal	12" H x 12" W	NAT.		94	130
	Juniperus horizontalis 'Blue Chip' Blue Chip Juniper	5 gal	1' H x 6' W	NAT.		705	201
	ACCENT PERENNIALS	BOTANICAL / COMMON NAME	SIZE	EST'D MAT. SIZE	NATIVE	SPACING	ONSITE QTY
	Gaillardia pulchella * Annual Gaillardia	5 gal	16" H x 16" W	Y		16	

*POLLINATOR FRIENDLY PLANT SPECIES
***POLLINATOR NESTING PLANT SPECIES

KEY MAP



TOPDRESS SCHEDULE

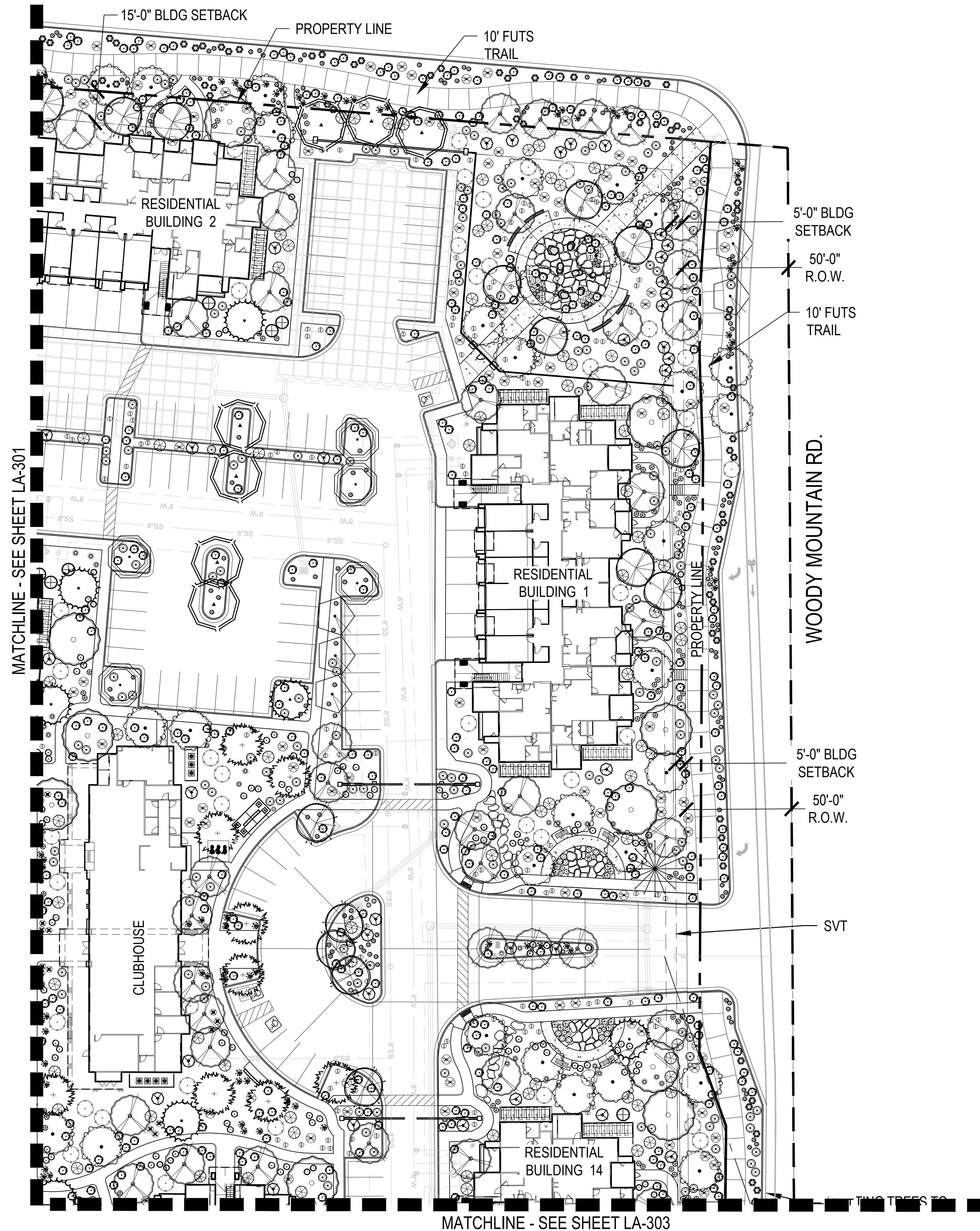
- TYPE 1 - DECOMPOSED GRANITE
 ALL PERIMETER LANDSCAPE AREAS
 SOURCE: FLAGSTAFF LANDSCAPE PRODUCTS OR APPROVED EQUAL
 SIZE: 1" CLEAN/SCREENED
 COLOR: TABLE MESA BROWN
- TYPE 2 - ENGINEERED WOOD FIBER
 SOURCE: ZEAGER BROS. INC
 TYPE: WOOD CARPET
- TYPE 3 - TURF
 TYPE: FESCUE SOD
- TYPE 4 - TURF WITH GRASS PAVE 2
 TYPE: FESCUE SOD
 VEHICULAR RATED
- TYPE 5 - ARTIFICIAL TURF - DOG PARK
 SUPPLIER: FOREVER LAWN
 TYPE: K9 GRASS OR APPROVED EQUAL
- TYPE 6 - STABILIZED DG
 SUPPLIER: FLAGSTAFF LANDSCAPE PRODUCTS OR APPROVED EQUAL
 SIZE: 1/4" MINUS
 COLOR: MADISON GOLD
- TYPE 7 - BOULDERS
 SOURCE: FLAGSTAFF LANDSCAPE PRODUCTS OR APPROVED EQUAL
 SIZE: SEE HARDSCAPE PLAN FOR BOULDER SIZES

- NOTES:**
- CONTRACTOR TO PROVIDE SAMPLES OF ALL TOPDRESS MATERIALS TO LANDSCAPE ARCHITECT FOR REVIEW AND APPROVAL PRIOR TO INSTALLATION.
 - INSTALL 2" DEPTH OF DECOMPOSED GRANITE IN ALL PLANTING AREAS.

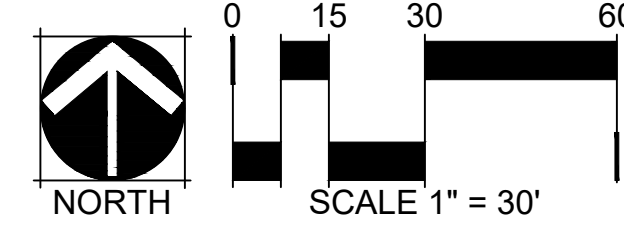
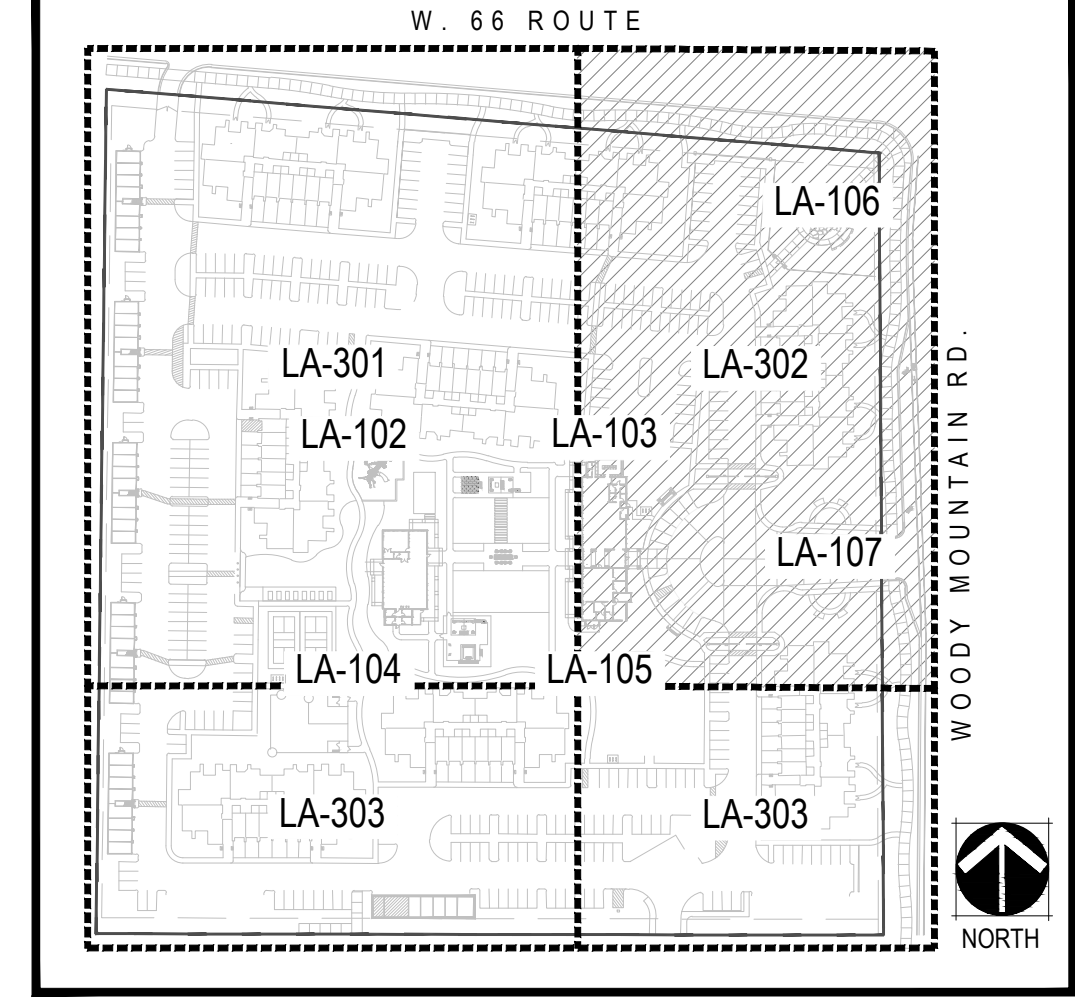
PLANT LEGEND

EXISTING TREES	BOTANICAL / COMMON NAME	SIZE	EST'D MAT. SIZE	NATIVE	SPACING	ONSITE QTY	ROW QTY
	EXISTING TREE TO REMAIN					6	
DECIDUOUS CANOPY	BOTANICAL / COMMON NAME	SIZE	EST'D MAT. SIZE	NATIVE	SPACING	ONSITE QTY	ROW QTY
	Acer x freemanii Autumn Blaze Maple	2" CAL, B&B	45' H x 30' W	NAT.	AS SHOWN	39	
	Gleditsia triacanthos inermis 'Skyline' TM Skyline Thornless Honey Locust	2" CAL, B&B	45' H x 35' W	NAT.	AS SHOWN	27	
	Populus x acuminata Lanceleaf Poplar	2" CAL, B&B	50' H x 40' W	NAT.	AS SHOWN	23	3
DECIDUOUS ORNAMENTAL	BOTANICAL / COMMON NAME	SIZE	EST'D MAT. SIZE	NATIVE	SPACING	ONSITE QTY	ROW QTY
	Cercis occidentalis Western Redbud	2.5" CAL, B&B	15' H x 15' W			106	7
	Populus tremuloides Quaking Aspen	2" CAL, B&B	50' H x 20' W	Y	AS SHOWN	24	7
	Prunus americana American Plum	2.5" CAL, B&B	20' H x 20' W	NAT.		21	
	Robinia x ambigua 'Purple Robe' Pink Flowering Locust	2.5" CAL, B&B	30' H x 20' W	NAT.		59	13
EVERGREEN TREES	BOTANICAL / COMMON NAME	SIZE	EST'D MAT. SIZE	NATIVE	SPACING	ONSITE QTY	ROW QTY
	Juniperus scopulorum Rocky Mountain Juniper	6' HT, B&B	15' H x 6' W	Y	AS SHOWN	97	
	Picea pungens 'Glauca' Colorado Blue Spruce	6' HT, B&B	40' H x 20' W	NAT.	AS SHOWN	21	
	Pinus ponderosa Ponderosa Pine	6' HT, B&B	60' H x 25' W	Y	AS SHOWN	37	3
DECIDUOUS SHRUBS - LARGE 7'-9'	BOTANICAL / COMMON NAME	SIZE	EST'D MAT. SIZE	NATIVE	SPACING	ONSITE QTY	ROW QTY
	Cornus stolonifera Red Twig Dogwood	5 gal	8' H x 8' W	NAT.		140	17
DECIDUOUS SHRUBS - MEDIUM 5'-7'	BOTANICAL / COMMON NAME	SIZE	EST'D MAT. SIZE	NATIVE	SPACING	ONSITE QTY	ROW QTY
	Caryopteris x clandonensis Blue Mist Spirea	5 gal	3' H x 6' W	NAT.		255	
	Prunus besseyi 'Pawnee Buttes' Pawnee Buttes Sandcherry	5 gal	2' H x 6' W	Y		136	68
	Rhus trilobata 'Autumn Amber' * Autumn Amber Sumac	5 gal	2' H x 6' W	NAT.		52	
DECIDUOUS SHRUBS - SMALL 2'-5'	BOTANICAL / COMMON NAME	SIZE	EST'D MAT. SIZE	NATIVE	SPACING	ONSITE QTY	ROW QTY
	Euonymus alatus 'Compactus' Compact Burning Bush	5 gal	3' H x 3' W	Y		85	
	Perovskia abrotanoides * Russian Sage	5 gal	4' H x 4' W	NAT.		332	57
	Potentilla fruticosa 'Gold Drop' Gold Drop Potentilla	3 gal	3' H x 3' W	Y		353	5
EVERGREEN SHRUBS	BOTANICAL / COMMON NAME	SIZE	EST'D MAT. SIZE	NATIVE	SPACING	ONSITE QTY	ROW QTY
	Arctostaphylos x coloradoensis 'Panchito' Panchito Manzanita	2 gal	1' H x 3' W	Y		161	
	Mahonia aquifolium Oregon Grape	5 gal	1' H x 6' W	NAT.		112	
ORNAMENTAL GRASSES	BOTANICAL / COMMON NAME	SIZE	EST'D MAT. SIZE	NATIVE	SPACING	ONSITE QTY	ROW QTY
	Bouteloua gracilis 'Blonde Ambition' *** Blonde Ambition Blue Grama Grass	3 gal	3' H x 3' W	Y		110	59
	Muhlenbergia rigens Deer Grass	1 gal	4' H x 4' W	Y		58	
	Panicum virgatum 'Shenandoah' Shenandoah Switch Grass	1 gal	3' H x 3' W	Y		31	
	Schizachyrium scoparium Little Bluestem	1 gal	3' H x 3' W	Y		60	
PERENNIALS & GROUNDCOVERS	BOTANICAL / COMMON NAME	SIZE	EST'D MAT. SIZE	NATIVE	SPACING	ONSITE QTY	ROW QTY
	Achillea tomentosa Woolly Yarrow	1 gal	6" H x 12" W	Y		9	25
	Cerastium tomentosum Snow In Summer	1 gal	1' H x 3' W	NAT.		225	13
	Festuca glauca Blue Fescue	1 gal	12" H x 12" W	NAT.		94	130
	Juniperus horizontalis 'Blue Chip' Blue Chip Juniper	5 gal	1' H x 6' W	NAT.		705	201
ACCENT PERENNIALS	BOTANICAL / COMMON NAME	SIZE	EST'D MAT. SIZE	NATIVE	SPACING	ONSITE QTY	ROW QTY
	Gaillardia pulchella * Annual Gaillardia	5 gal	16" H x 16" W	Y		16	

*POLLINATOR FRIENDLY PLANT SPECIES
 ***POLLINATOR NESTING PLANT SPECIES

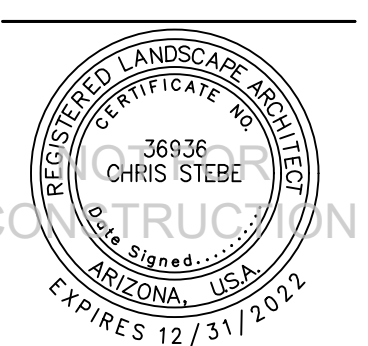


KEY MAP



CHECKED BY: AB CS
 DRAWN BY: DP KW





PLANT LEGEND

EXISTING TREES	BOTANICAL / COMMON NAME	SIZE	EST'D MAT. SIZE	NATIVE	SPACING	ONSITE QTY	ROW QTY
	EXISTING TREE TO REMAIN					6	
DECIDUOUS CANOPY	BOTANICAL / COMMON NAME	SIZE	EST'D MAT. SIZE	NATIVE	SPACING	ONSITE QTY	ROW QTY
	Acer x freemanii Autumn Blaze Maple	2" CAL, B&B	45' H x 30' W	NAT.	AS SHOWN	39	
	Gleditsia triacanthos inermis 'Skyline'™ Skyline Thornless Honey Locust	2" CAL, B&B	45' H x 35' W	NAT.	AS SHOWN	27	
	Populus x acuminata Lanceleaf Poplar	2" CAL, B&B	50' H x 40' W	NAT.	AS SHOWN	23	3
DECIDUOUS ORNAMENTAL	BOTANICAL / COMMON NAME	SIZE	EST'D MAT. SIZE	NATIVE	SPACING	ONSITE QTY	ROW QTY
	Cercis occidentalis Western Redbud	2.5" CAL, B&B	15' H x 15' W			106	7
	Populus tremuloides Quaking Aspen	2" CAL, B&B	50' H x 20' W	Y	AS SHOWN	24	7
	Prunus americana American Plum	2.5" CAL, B&B	20' H x 20' W	NAT.		21	
	Robinia x ambigua 'Purple Robe' Pink Flowering Locust	2.5" CAL, B&B	30' H x 20' W	NAT.		59	13
EVERGREEN TREES	BOTANICAL / COMMON NAME	SIZE	EST'D MAT. SIZE	NATIVE	SPACING	ONSITE QTY	ROW QTY
	Juniperus scopulorum Rocky Mountain Juniper	6' HT, B&B	15' H x 6' W	Y	AS SHOWN	97	
	Picea pungens 'Glauca' Colorado Blue Spruce	6' HT, B&B	40' H x 20' W	NAT.	AS SHOWN	21	
	Pinus ponderosa Ponderosa Pine	6' HT, B&B	60' H x 25' W	Y	AS SHOWN	37	3
DECIDUOUS SHRUBS - LARGE 7'-9'	BOTANICAL / COMMON NAME	SIZE	EST'D MAT. SIZE	NATIVE	SPACING	ONSITE QTY	ROW QTY
	Cornus stolonifera Red Twig Dogwood	5 gal	8' H x 8' W	NAT.		140	17
DECIDUOUS SHRUBS - MEDIUM 5'-7'	BOTANICAL / COMMON NAME	SIZE	EST'D MAT. SIZE	NATIVE	SPACING	ONSITE QTY	ROW QTY
	Caryopteris x clandonensis Blue Mist Spirea	5 gal	3' H x 6' W	NAT.		255	
	Prunus besseyi 'Pawnee Buttes' Pawnee Buttes Sandcherry	5 gal	2' H x 6' W	Y		136	68
	Rhus trilobata 'Autumn Amber' * Autumn Amber Sumac	5 gal	2' H x 6' W	NAT.		52	
DECIDUOUS SHRUBS - SMALL 2'-5'	BOTANICAL / COMMON NAME	SIZE	EST'D MAT. SIZE	NATIVE	SPACING	ONSITE QTY	ROW QTY
	Euonymus alatus 'Compactus' Compact Burning Bush	5 gal	3' H x 3' W	Y		85	
	Perovskia abrotanoides * Russian Sage	5 gal	4' H x 4' W	NAT.		332	57
	Potentilla fruticosa 'Gold Drop' Gold Drop Potentilla	3 gal	3' H x 3' W	Y		353	5
EVERGREEN SHRUBS	BOTANICAL / COMMON NAME	SIZE	EST'D MAT. SIZE	NATIVE	SPACING	ONSITE QTY	ROW QTY
	Arctostaphylos x coloradoensis 'Panchito' Panchito Manzanita	2 gal	1' H x 3' W	Y		161	
	Mahonia aquifolium Oregon Grape	5 gal	1' H x 6' W	NAT.		112	
ORNAMENTAL GRASSES	BOTANICAL / COMMON NAME	SIZE	EST'D MAT. SIZE	NATIVE	SPACING	ONSITE QTY	ROW QTY
	Bouteloua gracilis 'Blonde Ambition' *** Blonde Ambition Blue Grama Grass	3 gal	3' H x 3' W	Y		110	59
	Muhlenbergia rigens Deer Grass	1 gal	4' H x 4' W	Y		58	
	Panicum virgatum 'Shenandoah' Shenandoah Switch Grass	1 gal	3' H x 3' W	Y		31	
	Schizachyrium scoparium Little Bluestem	1 gal	3' H x 3' W	Y		60	
PERENNIALS & GROUNDCOVERS	BOTANICAL / COMMON NAME	SIZE	EST'D MAT. SIZE	NATIVE	SPACING	ONSITE QTY	ROW QTY
	Achillea tomentosa Woolly Yarrow	1 gal	6" H x 12" W	Y		9	25
	Cerastium tomentosum Snow In Summer	1 gal	1" H x 3" W	NAT.		225	13
	Festuca glauca Blue Fescue	1 gal	12" H x 12" W	NAT.		94	130
	Juniperus horizontalis 'Blue Chip' Blue Chip Juniper	5 gal	1' H x 6' W	NAT.		705	201
ACCENT PERENNIALS	BOTANICAL / COMMON NAME	SIZE	EST'D MAT. SIZE	NATIVE	SPACING	ONSITE QTY	ROW QTY
	Gaillardia pulchella * Annual Gaillardia	5 gal	16" H x 16" W	Y		16	

*POLLINATOR FRIENDLY PLANT SPECIES
 ***POLLINATOR NESTING PLANT SPECIES

TOPDRESS SCHEDULE

- TYPE 1 - DECOMPOSED GRANITE
ALL PERIMETER LANDSCAPE AREAS
SOURCE: FLAGSTAFF LANDSCAPE PRODUCTS OR APPROVED EQUAL
SIZE: 1" CLEAN/SCREENED
COLOR: TABLE MESA BROWN
- TYPE 2 - ENGINEERED WOOD FIBER
SOURCE: ZEAGER BROS. INC
TYPE: WOOD CARPET
- TYPE 3 - TURF
TYPE: FESCUE SOD
- TYPE 4 - TURF WITH GRASS PAVE 2
TYPE: FESCUE SOD
VEHICULAR RATED
- TYPE 5 - ARTIFICIAL TURF - DOG PARK
SUPPLIER: FOREVER LAWN
TYPE: K9 GRASS OR APPROVED EQUAL
- TYPE 6 - STABILIZED DG
SUPPLIER: FLAGSTAFF LANDSCAPE PRODUCTS OR APPROVED EQUAL
SIZE: 1/4" MINUS
COLOR: MADISON GOLD
- TYPE 7 - BOULDERS
SOURCE: FLAGSTAFF LANDSCAPE PRODUCTS OR APPROVED EQUAL
SIZE: SEE HARDSCAPE PLAN FOR BOULDER SIZES

- NOTES:**
- CONTRACTOR TO PROVIDE SAMPLES OF ALL TOPDRESS MATERIALS TO LANDSCAPE ARCHITECT FOR REVIEW AND APPROVAL PRIOR TO INSTALLATION.
 - INSTALL 2" DEPTH OF DECOMPOSED GRANITE IN ALL PLANTING AREAS.

KEY MAP

