



## **CITY ENGINEERING DIVISION**

### **Monthly Projects Report February 2023**

Honorable Mayor, Vice Mayor and Council,

The February report was completed by our Project Managers on March 3<sup>rd</sup> and includes project updates for the month of February.

The attached map is a comprehensive view of the highlighted projects in our community that are assigned to the City Engineering Division, inclusive of projects that are in planning, design, and construction phases.

We have tried to reduce the extent of information provided and focused on only those projects that had substantive progress from previous months or have key milestones to share.

If you would like to receive more information on a specific project, please reach out and we'd be glad to share more detailed information.

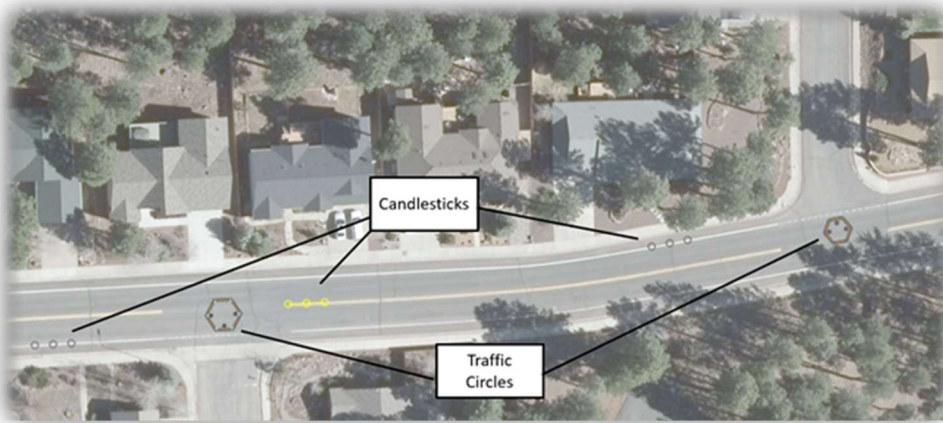
**Boulder Point - Traffic Calming** (DESIGN PHASE)

FUND: TRANSPORTATION TAX

**Description** – The Transportation Commission approved the traffic circle concept at the intersections of University Ave/Majestic Rd and University Ave/Tombaugh Way on June 1<sup>st</sup>, 2022. This design, in temporary form, lowered the 85<sup>th</sup> percentile speed on University Ave to 27 mph, down from 31 mph. This brings the speeds down to a level that are below the threshold for traffic calming based on the worksheets in the Guidebook for Residential Traffic Management. The final design will address concerns from citizens in the neighborhood regarding the traffic circle design, including vehicles traveling in the bicycle lane and sight distance issues for northbound vehicles on Majestic Rd. This project also includes raised pedestrian crosswalks at the two Woody Way intersections.

**Project Update:**

- 60% plans have been completed by Woodson Engineering / Ardurra.
- Council and traffic commission have given approval to continue to final design after an additional evaluation in February 2023.



*W University Ave Traffic Circles*

**Fremont Blvd Restriping** (DESIGN PHASE)

FUND: TRANSPORTATION TAX

**Description** – The Transportation Commission approved investigating traffic calming measures on Fremont Blvd on February 2<sup>nd</sup> 2022. Staff determined that restriping the road from two lanes in each direction to one lane in each direction with additional parking and bike buffers was an appropriate solution. The new draft cross section can be seen below. Citizens have recently requested a review of the striping proposal, that discussion will occur at the December 7<sup>th</sup> Transportation Commission meeting.

After the Transportation Commission on December 7th the Commission decided to not go forward with the new striping plan and instead directed staff to conduct a neighborhood walkthrough as soon as weather permits to understand the concerns of the citizens.



*Proposed Fremont Blvd New Striping Configuration*

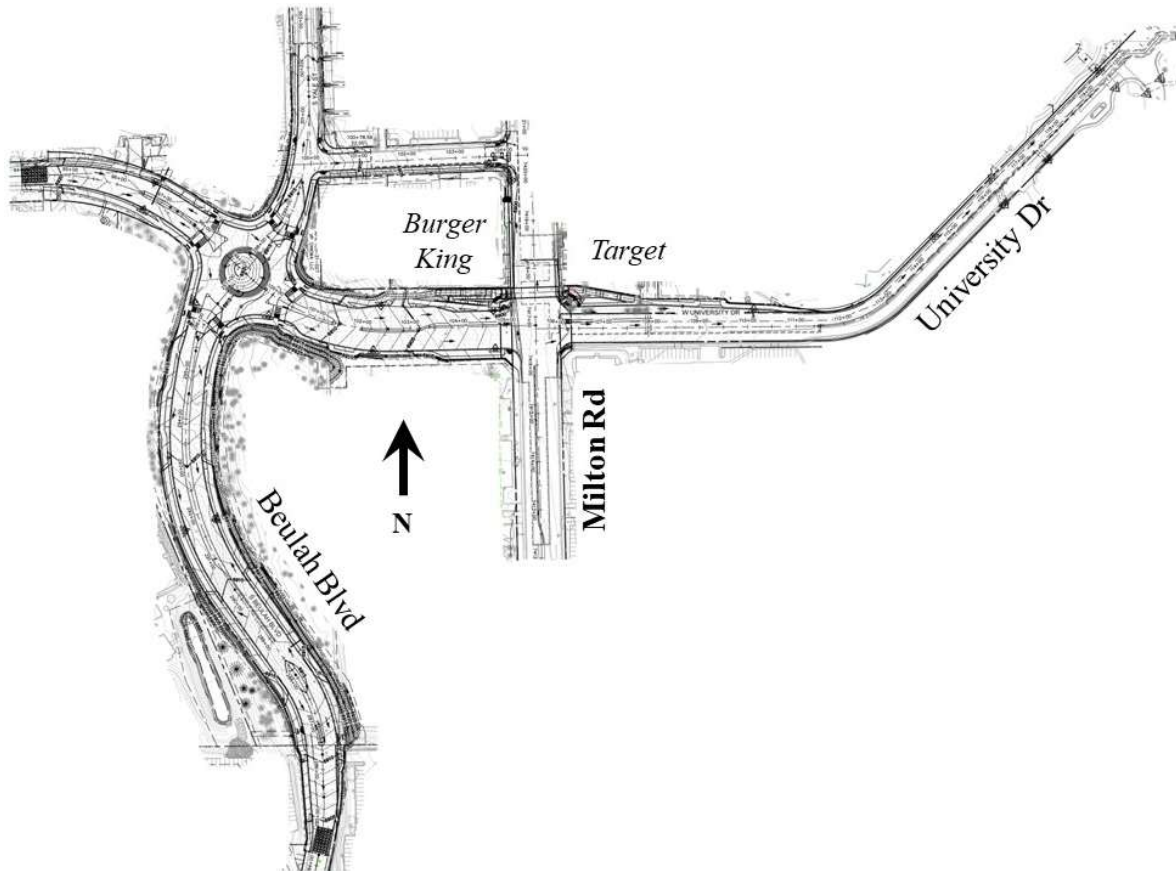
## **Beulah Boulevard Extension/University Drive Realignment** (CONSTRUCTION PHASE)

FUND: TRANSPORTATION TAX (STREETS)

**Description** – This roadway improvement project extends the northern terminus of Beulah Boulevard to connect with University Avenue. Furthermore, University Avenue (west of Milton) will be realigned to match up with University Drive (east of Milton). A new roundabout will be constructed where Beulah Boulevard and University Avenue will intersect. Additionally, this project will also be constructing a new pedestrian underpass beneath Milton Road, just south of Burger King across to Target. Construction is expected to begin in April 2023 and conclude in late summer 2025.

### **Project Update:**

- Shephard-Wesnitzer, Inc. (SWI) is the design engineer.
- Eagle Mountain Construction (EMC) is the CMAR (Construction Manager at Risk) contractor.
- Open House for our community was held on 2 March here at City Hall.
- Real estate acquisitions are underway for right-of-way and easements.
- Design plans are undergoing the final touches prior to completion.
- Construction will begin in late March.



*Extent map of new Beulah and University Roadway Project – taken from final plans.*

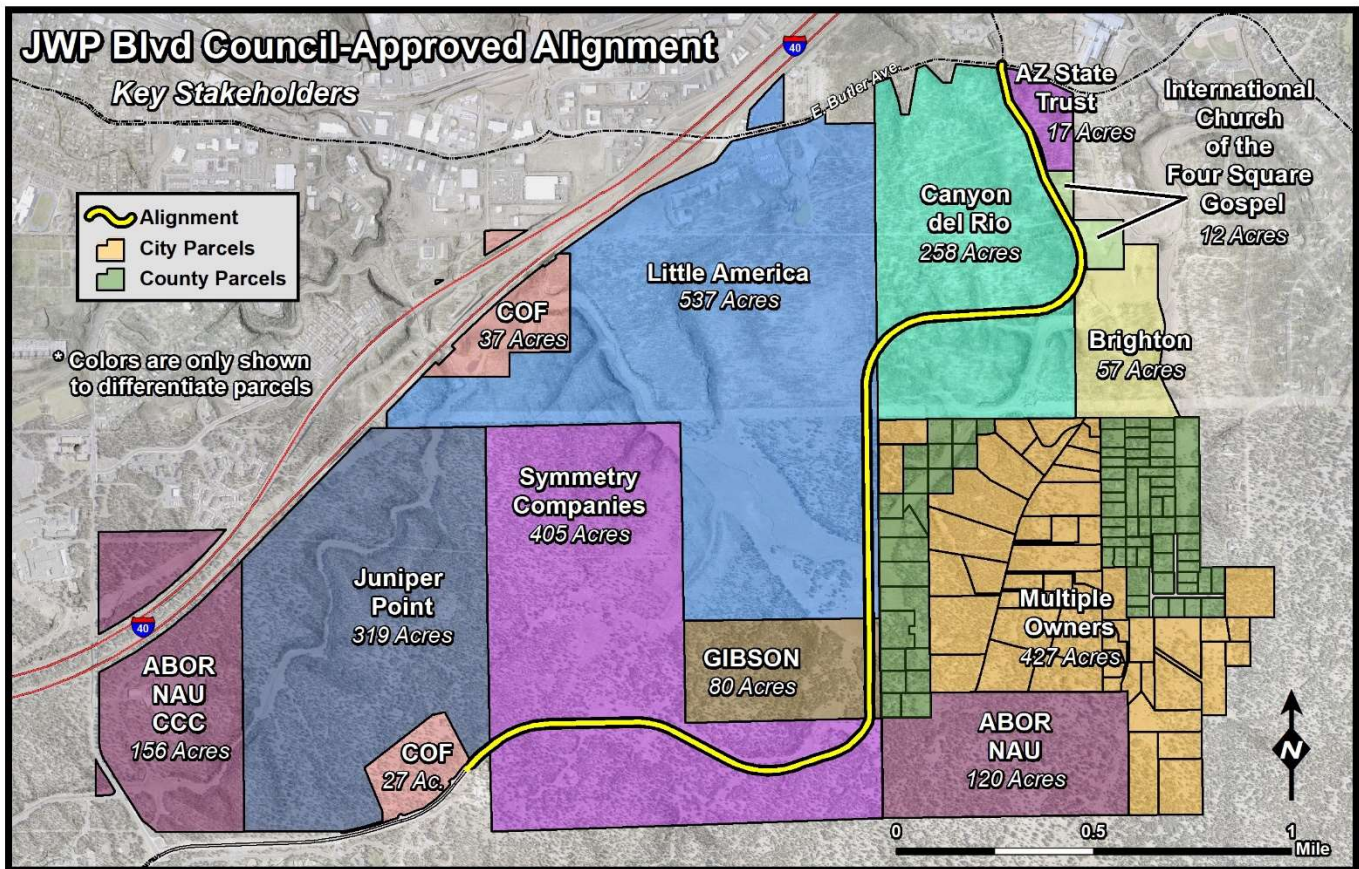
**J.W. Powell Specific Plan Study** (PLANNING PHASE)

FUND: GENERAL GOVERNMENT & TRANSPORTATION TAX

**Description** – The purpose of the John Wesley Powell Specific Plan Study (Study) is to develop a specific plan to guide the future private development of public infrastructure, utilities, and facilities. Phase 1 of the project is the conceptual design of the future public infrastructure (roads), public utilities and facilities location analysis. The conceptual design is required to meet the full City infrastructure standards including street improvements, potable water, sanitary sewer mains, storm drain systems, street lighting and associated appurtenances. Phase 1 of the Study includes a sanitary sewer system master plan for the area. A water system master plan was previously developed for the area. Phase 2 of the Study is development of the planning elements necessary to gain City Council approval of a Specific Plan.

**Project Update:**

- City Staff is working with Peak Engineering and their subconsultant, Swaback, to scope Change Order 5. This Change Order will come to Council in early April and the scope of work will be the Specific Plan.
- The Specific Plan will take approximately one year to complete after which time the design will finalize with construction following thereafter.



*Council-Approved alignment of new J.W. Powell Boulevard and Fourth Street; denoted by yellow line*

## **Coconino Estates Improvements Phase I** (CONSTRUCTION PHASE)

FUND: ROAD REPAIR & STREET SAFETY

**Description** – This is a utility and roadway improvements project located in the Coconino Estates neighborhood on Beal Road from Rockridge to Fort Valley, Navajo Drive from Navajo Road to Murray, Whipple Road from Navajo Drive to McMillan, and Navajo Road from Navajo Drive to Fort Valley. Improvements on the streets generally consist of replacing existing infrastructure with new, including water and sewer mains, water and sewer services, fire hydrants, storm drains, streetlights, the entire asphalt roadway, and defective select edge improvements (curb & gutter, sidewalk, etc.), except for Whipple Road which will only receive a new water main. There will also be new infrastructure added consisting of underground electric lines for streetlighting and sidewalk on both sides of the street where it does not currently exist on Beal Road, Navajo Drive south of Beal, and on Navajo Road. For additional information visit the Project website at [www.coconinoestates.com](http://www.coconinoestates.com).

**Contractor** – Eagle Mountain Construction

### **Project Update :**

#### **Navajo Road and Navajo Drive south of Beal (Construction Zones #1 and #2)**

- Utility and roadway improvements are complete including landscape restorations.
- Navajo Road and Navajo Drive south of Beal are open to all traffic.

#### **Beal Road east of Rio de Flag (Construction Zone #3)**

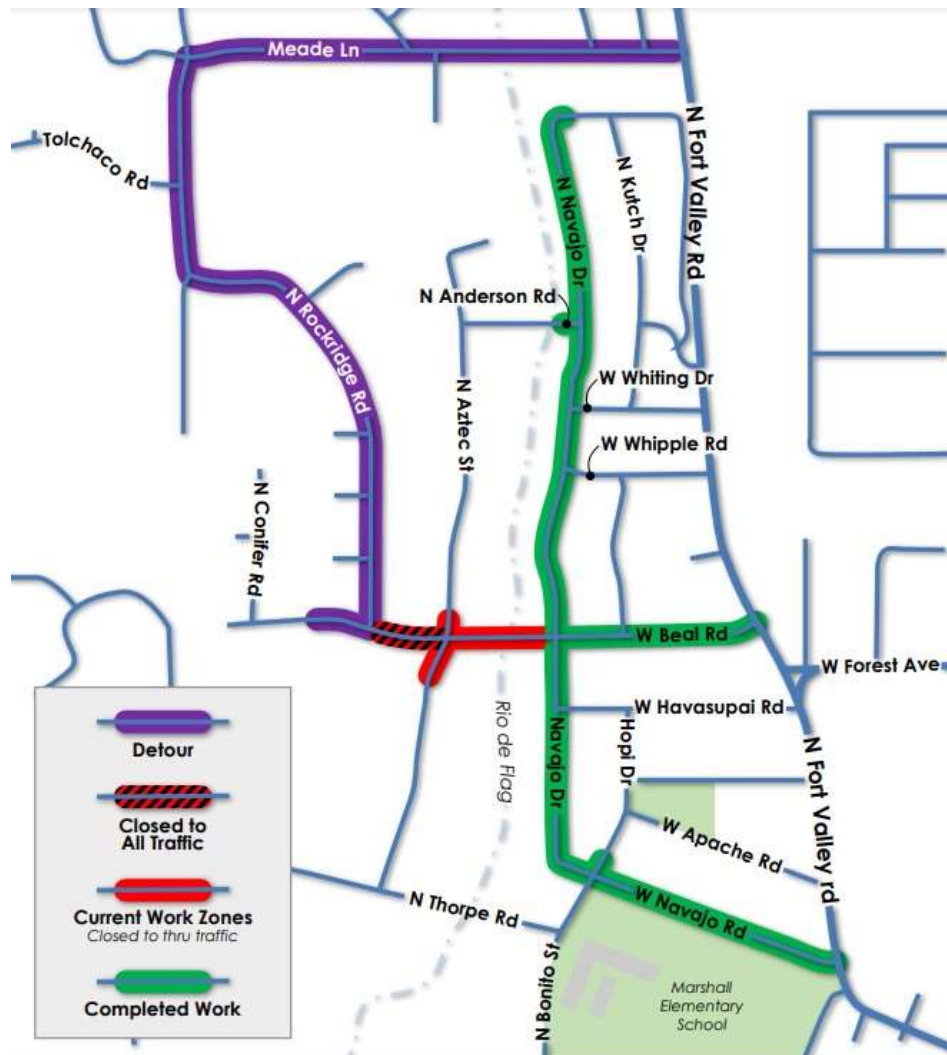
- Utility and roadway improvements are complete including landscape restorations.
- Minor striping improvements will be corrected at a later date.
- Beal is currently closed from Aztec to Navajo for construction activities in Zone #5.

#### **Navajo Drive north of Beal (Construction Zone #4)**

- Utility and roadway improvements are complete including landscape restorations.
- Navajo Drive north of Beal is open to all traffic.

#### **Beal Road west of Rio de Flag (Construction Zone #5)**

- Sewer main and sewer service installations are complete from the Rio de Flag working west.
- Water main installation is complete within the Beal Road and Aztec Street intersection.
- The installation of new water main and services along Beal Road, from Aztec Street to just west of Rockridge Road, will continue.
- Due to rock excavation, the closure of Beal Road, between Aztec Street and Rockridge Road, will be extended until early 2023.
- Beal from Aztec to Navajo, is closed to thru traffic with access for residents only. Access to Aztec and Anderson properties on the north side of the Beal and Aztec intersection will be maintained through the Beal and Aztec intersection.



*Project Map with current road closures and detours*

**Coconino Estates Improvements Phase II** (CONSTRUCTION PHASE)

FUND: ROAD REPAIR & STREET SAFETY & AGING WATER AND SEWER INFRASTRUCTURE REPLACEMENT PROGRAMS

**Description** - This is a utility and roadway improvements project located on several streets in the Coconino Estates neighborhood as seen in the map below. Improvements on the streets generally consist of replacing all existing utility and roadway infrastructure. The utility improvements include replacing the existing water and sewer mains, water and sewer services, fire hydrants, and manholes. The roadway improvements include replacing the existing asphalt roadway, replacing rolled curb with vertical curb, constructing driveway ramps at driveway entrances, and replacing select sidewalk only where it currently exists on Crescent Ln Drive. Sidewalk will NOT be installed where it does not currently exist. For additional information visit the Project website at [www.coconinoestates.com](http://www.coconinoestates.com)

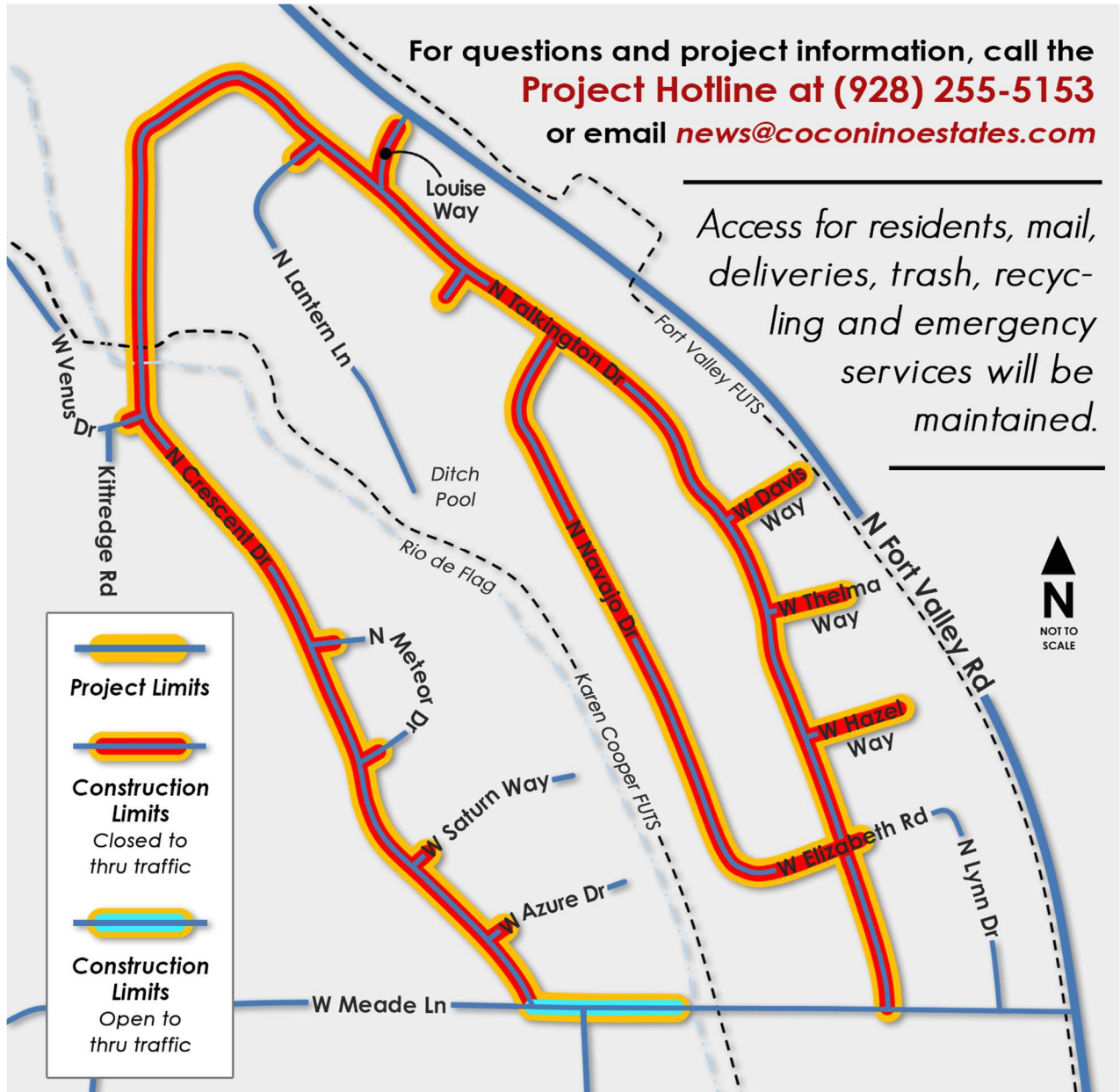
**Contractor** – Standard Construction Company

**Project Update:**

- Entire project is currently under a Winter Shut down until spring 2023. When the project resumes, landscaping restoration, manhole testing, and minor adjustments will be performed.

For questions and project information, call the  
**Project Hotline at (928) 255-5153**  
 or email [news@coconinoestates.com](mailto:news@coconinoestates.com)

Access for residents, mail,  
 deliveries, trash, recycling  
 and emergency  
 services will be  
 maintained.



Coconino Estates Improvements Phase II Project Map

## **Flagstaff Downtown Mile Safety and Connectivity Improvement Project** (PLANNING AND DESIGN PHASE)

FUND: TRANSPORTATION, STORMWATER, AGING INFRASTRUCTURE, BNSF RAILWAY, METROPLAN, GRANTS

**Description** – The Downtown Mile Project consists of a group of City and local agency projects located in Downtown Flagstaff and surrounding the BNSF Railway corridor. They include:

- The Rio de Flag Flood Control Project
- The Rio de Flag Pedestrian Tunnel
- The Lone Tree Overpass
- The Florence to Walnut Pedestrian Underpass
- The Milton Bridge Reconstruction
- The Mountain Line Downtown Connection Center (DCC)



The City has partnered with ADOT, BNSF Railway, Mountain Line, Amtrak, and the Army Corps of Engineers for the overall Downtown Mile Project to design and construct roadway, bridge, bike/pedestrian, and railroad improvements for the Flagstaff community.

In May 2022, the City applied for a Multimodal Program Discretionary Grant through the USDOT INFRA/Rural program for the Downtown Mile Safety and Connectivity Improvement Project to fund construction of the suite of projects, including a BNSF Railway corridor realignment and expansion. This grant will also facilitate completion of our Rio de Flag flood Control Project and integrate pedestrian and rail improvements with the Lone Tree Overpass Project and the future Mountain Line Downtown Connection Center.

The total project cost is estimated at \$56M and the amount of federal funding requested is \$32.5M (60%). The non-federal match (40%) is being provided from the City of Flagstaff in the amount of \$12.8M, which is funded through Proposition 419 partnership funding and allocated Transportation and Stormwater funding, and BNSF Railway is contributing \$11M in private funds. BNSF also provided expert consultant services in order to make this grant application possible.

**Project Update:**

- The City was notified on September 28 that we were awarded the USDOT INFRA grant.
- The Design Phase Services Contract was approved by City Council on October 18.
- On October 7, Congressmen Tom O’Halleran and Ruben Gallego, Dr. Coral Evans from Senator Mark Kelly’s office, and representatives from Mountain Line and MetroPlan met with Mayor Paul Deasy, Councilmembers Khara House and Adam Shimoni and City staff to discuss the award of the INFRA grant and celebrate this event for the Flagstaff community.
- Legal and Grants Management staff coordinated development of the IGA with MetroPlan to execute receipt of a \$490,000 funding contribution that was approved for the project planning and design effort. This IGA was approved by City Council on October 18.
- On October 27, City staff met with BNSF and AMTRAK for development of a CRISI grant application between the City and BNSF to fund additional rail and AMTRAK improvements for the Flagstaff Station.

The current updates for the projects included in the Downtown Mile are as follows:

## Rio de Flag Flood Control Project (Design Phase)

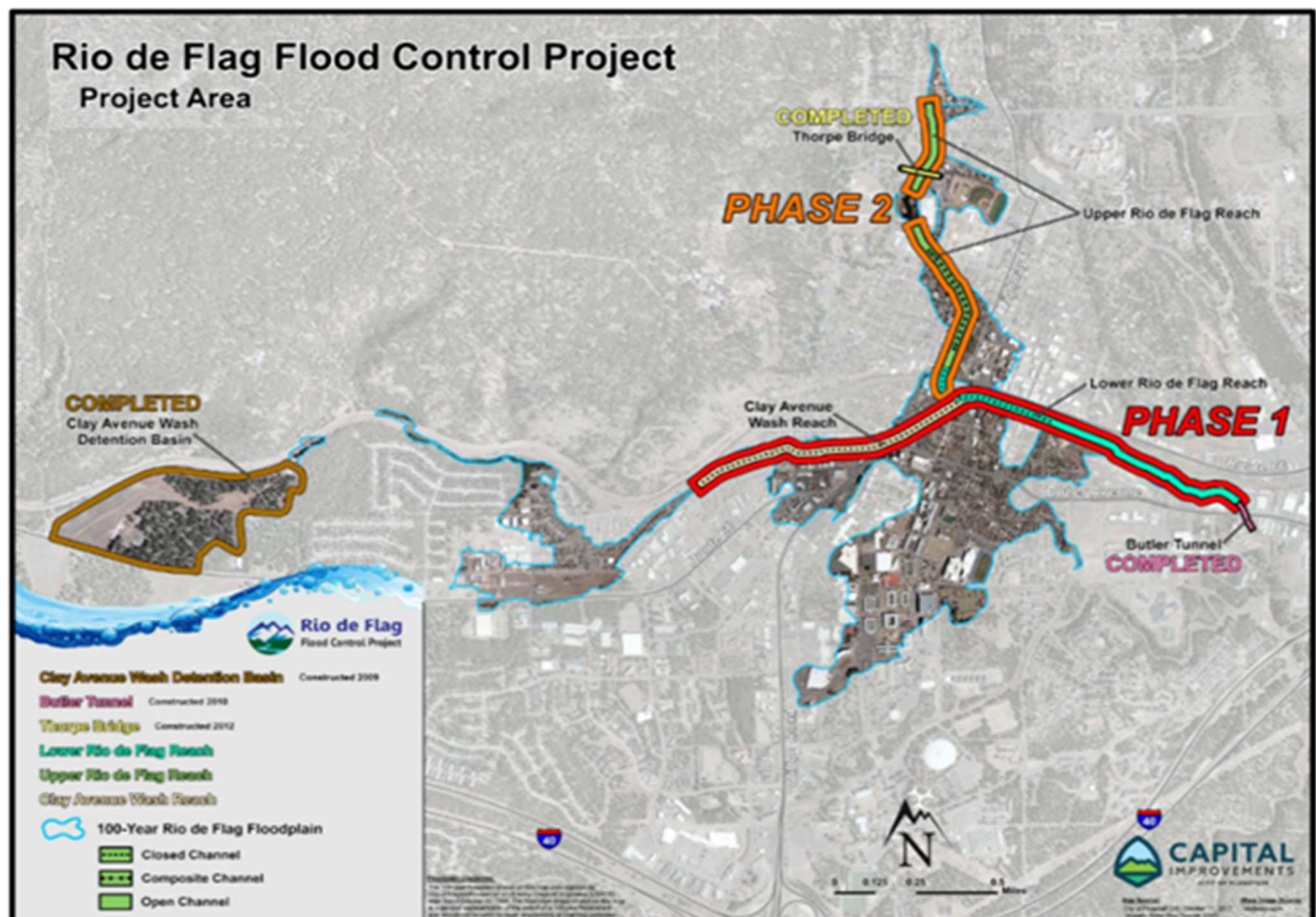
FUND: STORMWATER & AGING INFRASTRUCTURE

**Description** – Design consists of channel improvements along both the Rio de Flag and Clay Avenue Wash channels through central Flagstaff and includes a combination of underground concrete box culverts, open channel, and composite channel. The composite channel section has both an underground culvert to carry large volumes of water and a smaller open channel on top, which will provide an aesthetic element of flowing surface water during rainfall events. Total project length is approximately 15,000 feet.

The purpose of the Rio de Flag Flood Control Project is to remove the hazards associated with the hundred-year storm event, which include property damage, life safety concerns, and community economic impacts. From research conducted by the Army Corps, it was determined that a significant flood would damage approximately 1,500 structures valued at over \$916M and cause \$93M in economic damages, for a total impact of over \$1B.

### Project Update:

- Work continues on refinement of the design plans and the real estate documents.
- Property appraisals are being conducted to prepare for offers.
- Additional Real Estate Services Consultants are being brought on board to support acquisition needs and project timelines.
- The draft BNSF Construction and Maintenance Agreement is under review with City and Army Corps legal staff.
- The project continues work to coordinate construction phasing and develop traffic control plans for the Butler-Milton-Clay-Mike's Pike Intersection with ADOT and the Army Corps



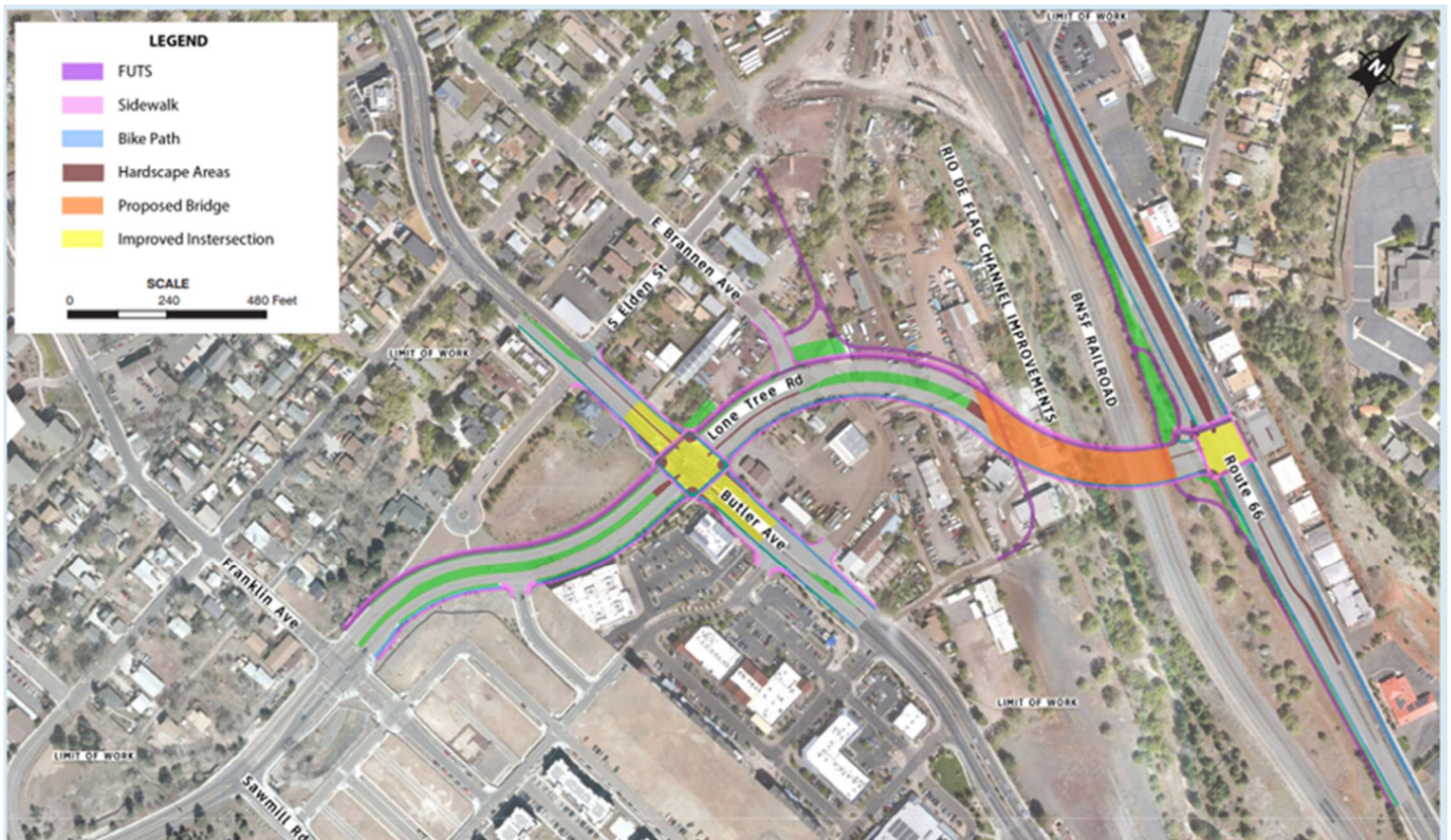
## **Lone Tree Overpass Project** (DESIGN PHASE)

FUND: TRANSPORTATION

**Description** – The Lone Tree Overpass Project will provide a grade-separated crossing over the future Rio de Flag drainage and the BNSF Railway corridor from Butler Avenue to Route 66. Funding for this project is provided through voter approved bonds as designated in the 2018 Proposition 420. The project will also include improvements from Butler south to Sawmill Road, which will be funded by Proposition 419. The project will be delivered via the Design-Build process and the team includes Ames as the contractor and WSP as the prime design consultant.

### **Project Update:**

- The 60% preliminary design plans were submitted to the City, ADOT, Mountain Line, and US Army Corps of Engineers for review.
- Work continued between BPAC and the Public Art Focus Group on development of the aesthetic and public art components for the bridge improvements.
- Consideration and Approval of Amendment #3, Construction Services Agreement with Ames Construction for the Lone Tree Overpass Project was presented to Council on February 21, 2023.
- Additional information is posted on the project website. [Lone Tree Overpass Project](#)



**Library Entrance** (CONSTRUCTION PHASE)

FUND: BBB - BEAUTIFICATION

**Description** – Project to bring Library Entrance into ADA compliance with new handicap ramp and new overall vision for the entrance. Public art will be incorporated into project and an artist is being brought onto the design team. Project includes upgrades to landscaping, handicap-accessible parking, parking lot, and hardscape.

**Project Update:**

- The project is currently underway and has established a temporary alternate Library Entrance that will be utilized throughout construction. The main Library entrance remains closed.
- The Library is currently in a winter shutdown. The contractor is still on site, making progress as possible between storm events.
- Project completion is expected in May.



*Library Entrance Project-Rendering of selected concept plan*

## **LMWTP Flocculation and Sediment Basin Rehabilitation** (CONSTRUCTION PHASE)

FUND: DRINKING WATER

**Description** – The flocculation and sedimentation basin structures and equipment that have been in operation for approximately 60 years are in deteriorated condition and require replacement and rehabilitation. The project consists of constructing a new static mixer installation, rehabilitation of the flocculation/sedimentation basin structures, replacement of electrical systems, and replacement of miscellaneous valves and piping.

### **Project Update :**

- Staff is currently working on a CMAR solicitation and grant funding for this project.
- Due to long material lead times, the first year of the contract will be used for procurement needs and construction will commence for the two following years, 2024 and 2025.



*Staff and Brown & Caldwell taking a tour of the LMWTP basins*

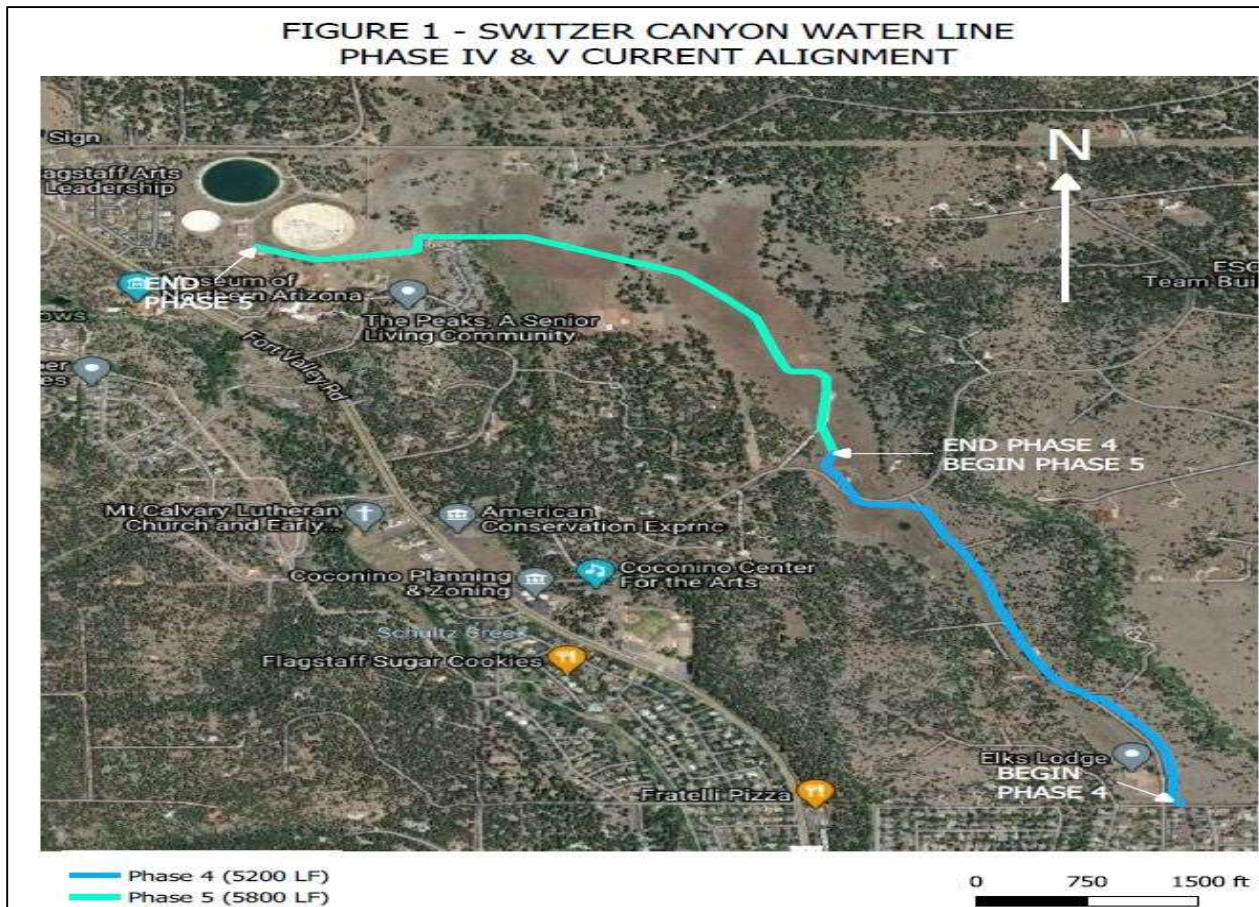
## Switzer Canyon Transmission Main Phase IV (Construction Phase)

FUND: DRINKING WATER

**Description** – The Project is the fourth phase of a five phase program and consists of installing two new water transmission mains, 24” and 16”, that will extend the distribution system, zone A and B, from the Downtown area to the City Reservoirs near Elden Lookout Road. The length of Phase IV is approximately 5200 feet. The project area extends outside City limits. Included in the project will be the two water mains with appurtenances and fire hydrants. Water service to county residents will not be provided in exchange for property rights. Construction of Phase IV is planned to begin in Summer of 2023. Design of Phase V is planned for FY24.

### **Project Update:**

- Final design of Phase IV was completed in January 2023.
- Construction cost estimate is approximately \$4.7MM.
- Advertisement for bidding began February 10, 2023 and closes March 10, 2023.
- Acquisition of property rights for Phase IV is nearing completion.
- Council consent and approval of construction contract is scheduled for April 4, 2023.
- Osprey nest will limit construction during breeding season (April 15 through July 31) for 1100 feet of Phase IV.



## **Protected Intersections at Butler/Beaver and Butler/San Francisco** (Design Phase)

FUND: TRANSPORTATION TAX

**Description** – The Project consists of feasibility designs of two protected intersections on Butler Avenue, one at the intersection with Beaver Street and one at the intersection with San Francisco Street. Protected intersections separate bicycle traffic from vehicular traffic. WSP USA, Inc. was selected as Engineering firm for 15% designs of protected intersections. Final deliverables consist of Technical Reports for each intersection and 15% level conceptual plans

### **Project Update:**

- WSP USA, Inc. has completed 15% designs and submitted draft Technical Reports
- Expected delivery of final Technical Reports is March 2023
- Estimate of costs for design and construction is \$793k for Beaver/Butler intersection and \$770k for San Francisco/Butler intersection



*Beaver Street and Butler Avenue*



*San Francisco Street and Butler Avenue*

**Solier Ave. Transmission Main** (CONSTRUCTION PHASE)

FUND: DRINKING WATER & DEVELOPER CONTRIBUTIONS

- **Description** – The Project consists of installing approximately 5,200 linear feet of 12” PVC water transmission main, this will complete the distribution system along Soliere Ave. from Elk Run St. to 4<sup>th</sup> St. The new transmission main will supply the needed secondary water source for developments along Butler Ave.

**Project Update:**

- Project is currently being advertised for bid, will close March 10
- A construction contract is it scheduled to be awarded at Council in April
- Due to long material lead times, construction will most likely not start until Spring of 2024



*Vicinity Map for new Soliere Ave. Transmission main, depicted with blue line*

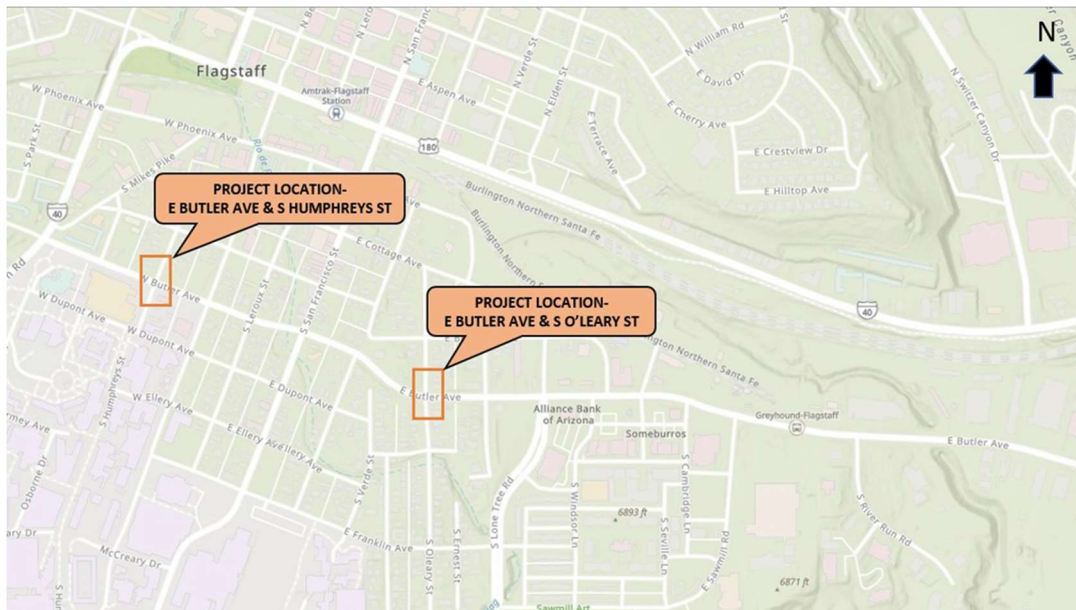
## **Butler and O’Leary Pedestrian Crossing** (DESIGN PHASE)

FUND: TRANSPORTATION

Description- This project includes the design and construction of a new pedestrian and bike crossing located at the intersection of Butler Avenue and O’Leary Street. Prior to design and construction, a traffic study will be conducted to determine if the crossing warranted. If the traffic study deems the crossing necessary, then the crossing at Humphrey’s Street and Butler Avenue will be upgraded to meet the current City of Flagstaff Engineering Design Standards.

Project Update:

- On-Call designer has provided a proposal for the scope of work.
- The proposal is under review by City staff, once approved the designer will receive NTP.
- Design is anticipated to be completed by Spring 2024 and construction to begin Summer or Fall of 2024.



*Vicinity map for the Butler and O’Leary Crossing & Butler and Humphrey’s Crossing*

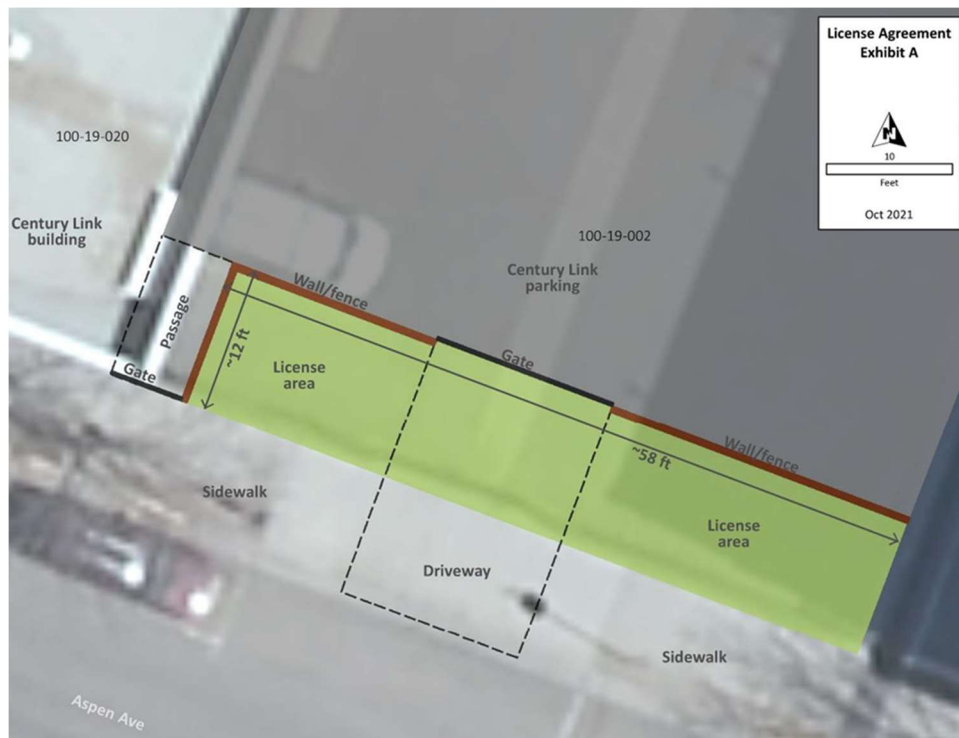
## Aspen Ave Bike and Pedestrian Enhancements (PLANNING PHASE)

FUND: BEAUTIFICATION

Description- This project includes the design and construction of an enhanced bike and pedestrian area located on Aspen Avenue along the frontage of the CenturyLink parking lot. This project will incorporate 2 CenturyLink parking spaces (via a business license agreement) to allow for seating and bike parking along Aspen Avenue. The fencing will be enhanced and pushed back, pavers or decorative concrete will be installed, and the seating and bike racks will also incorporate decorative elements.

### Project Update:

- On-call designer is putting together a proposal for the scope of work.
- In collaboration with BBB, we have met with stakeholders downtown to narrow design options and get community buy-in.
- Design is anticipated to be complete by Fall 2023 and construction to begin in Spring/Summer 2024



*Site concept for Aspen Niche*

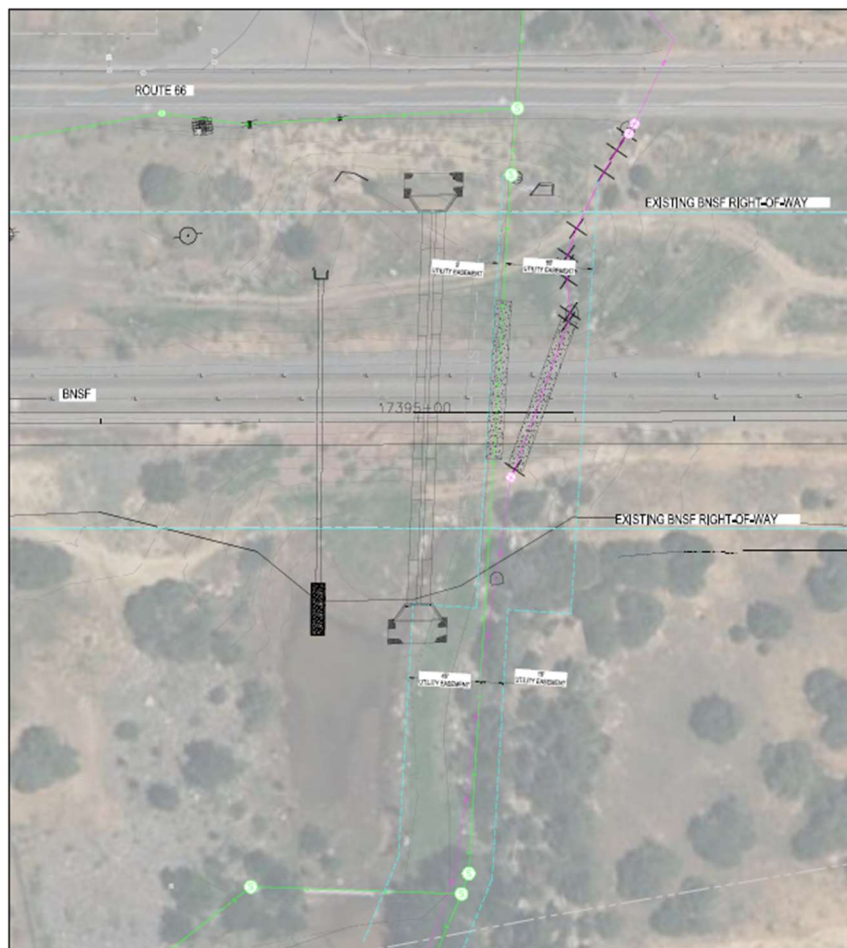
**BNSF Utility Relocation** (DESIGN PHASE)

FUND: WASTEWATER FUND AND RECLAIMED WATER FUND

Description- BNSF Railroad has requested that the City of Flagstaff relocate a wastewater and reclaimed water line that is conflict with their plans for adding 2 tracks to their rail line. This project is located in East Flagstaff, just south of Route 66 and east of Purina. The Rio de Flag crosses underneath the railroad tracks at this location as well. Stormwater has requested that the stormwater culverts be upsized to match the capacity of the box culverts located to the south underneath the I-40 as the current culverts are undersized and create significant backups during flooding events.

Project Update:

- On-call designer has begun design on the relocation of the reclaimed and sewer line.
- Designer has also been tasked with determining appropriate upsizing for the stormwater drain.
- Design is anticipated to be complete by May 2024 with construction starting shortly after.



*Existing conditions of sewer and reclaimed lines at BNSF RR*

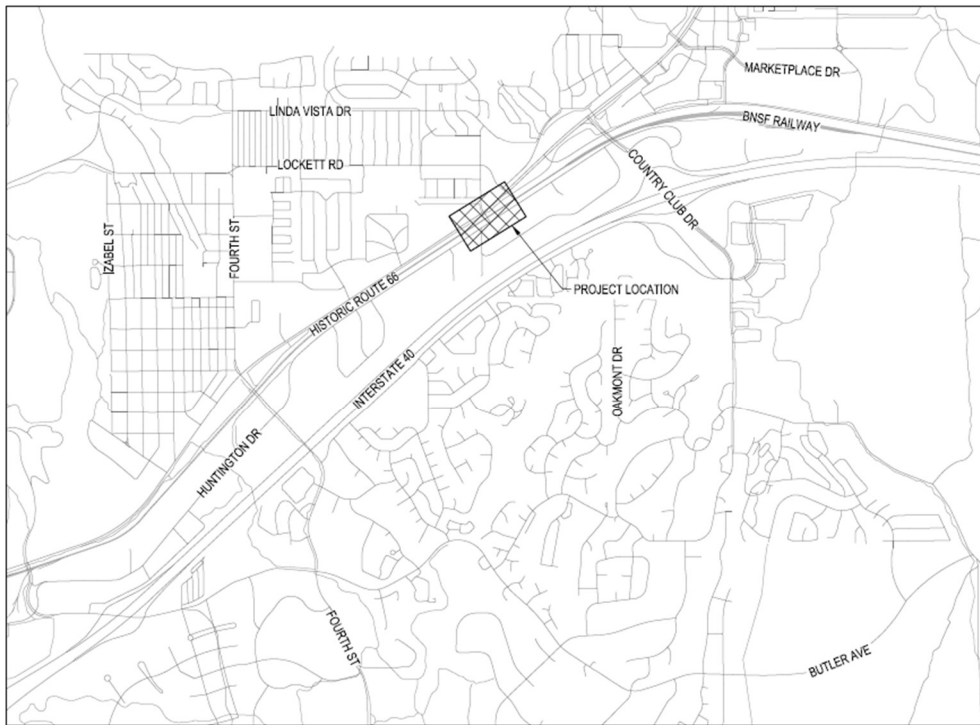
**Route 66 & Fanning S. Edge Landscaping (CONSTRUCTION PHASE)**

FUND: BEAUTIFICATION

Description- This project will enhance the existing landscape to draw attention to the street frontage and block the view of the industrial area to the south along Route 66 at the intersection of Fanning. The project was designed to incorporate themes from the Route 66 Park located to the northeast of the site. The Route 66 and Fanning S. Edge Landscaping project generally includes installation of new landscaping elements including native trees, shrubs, and grasses; installation of "FUTS-Style" fencing with U.S. Route 66 signs; installation of berms and basalt boulders to provide screening and increase aesthetics; and installation of reclaimed waterlines for irrigation.

Project Update:

- Bids were received on February 28<sup>th</sup> and are currently under review.
- The construction contract award will be presented to Council for consideration and approval on April 4, 2023.



LOCATION MAP  
NOT TO SCALE



*Vicinity map of Rt 66 & Fanning Landscaping Project*

## **Spruce Wash Drainage Improvements Project** (DESIGN PHASE)

FUND: Proposition 441

Description- The Spruce Wash Drainage Improvement Project is composed of seven different flood infrastructure projects that will be constructed over the next three years to mitigate flooding from the 2019 Museum Fire in the Spruce Wash area. The seven projects are as listed:

### **Arroyo Seco Drive Inlet**

The inlet at Arroyo Seco Drive captures surface runoff from the Spruce Wash channel as well as subsurface runoff from an existing 60-inch storm drain. The inlet will be reconstructed for the purposes of increasing the inlet capacity to capture more stormwater into the existing 60-inch storm drain. A permanent wall will also be constructed in place of the temporary eco-blocks that will divert excess stormwater into Ponderosa Park and into the Killip regional detention basin.

### **Arroyo Seco Drive to Dortha Avenue Channel**

The channel from Arroyo Seco Drive to Dortha Avenue has limited capacity to convey stormwater runoff in its existing condition. The channel will be re-graded to improve capacity above the existing 60-inch storm drain that runs underneath the channel.

### **Cedar Avenue Crossing**

The Spruce Wash channel will be reconstructed to convey a higher flow rate. The existing box culvert drop inlet will be reconstructed to match the new channel flow line, and the existing box culvert under Cedar Avenue will be evaluated and potentially upsized.

### **Cedar Avenue to Linda Vista Drive Channel**

The existing Linda Vista Drive Channel east of Grandview Drive between Cedar Avenue to Linda Vista Drive or “Grandview Channel” is slated to be improved to accommodate additional flow from the Spruce Watershed. The improvements will increase the capacity of the Linda Vista Drive Channel and may include channel lining, bank protection, horizontal & vertical realignment, franchise utility relocations and hardscape relocations. The existing channel characteristics vary from upstream to downstream and the channel may include several types of materials and cross section configurations.

### **Linda Vista Drive Crossing**

The existing culvert crossing at Linda Vista Drive just north of Paradise Road does not have adequate capacity to convey the stormwater runoff from the Spruce Watershed. A new box culvert crossing will be constructed to replace the existing corrugated metal pipes and limit the potential overtopping of Linda Vista Drive. The replacement will require franchise utility relocations as well as City of Flagstaff water and sewer main.

### **Grandview Drive Reconstruction**

The Project includes water and sewer main relocation/replacement on Grandview Drive from Cedar Avenue to Linda Vista Drive including services up to the right-of-way. Water replacements include new hydrants, valves and boxes. Sewer replacements include new manholes and cleanouts. Grandview Drive will be reconstructed from a

crowned street with rolled curb to an inverted crown street (valley gutter in the center of the street) with new vertical curb and spill gutter. This will require new driveway aprons and driveway matchups. Street improvements will include matchups to intersecting cul-de-sac streets. A new storm drain system will collect water from the lower end of Grandview Dr. and convey that stormwater via a box culvert or pipe to the Spruce Wash box culvert in Cedar Avenue to the east

### **“The Wedge” Detention Basin**

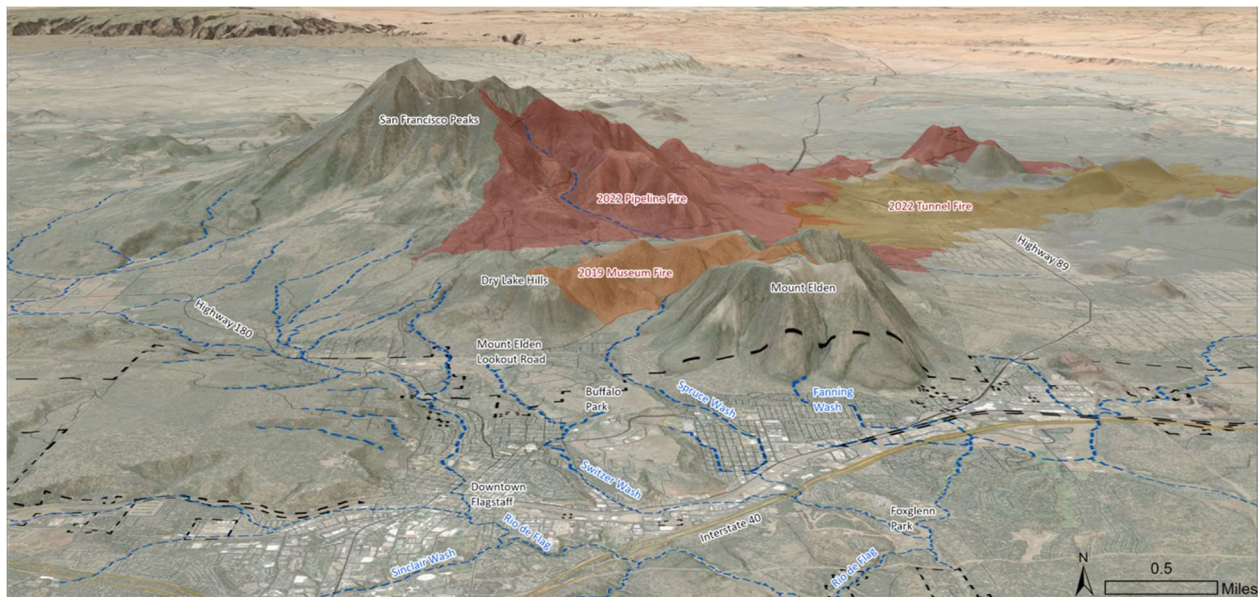
The City of Flagstaff owns a ±4.6-acres triangular shaped parcel, “The Wedge”, bounded by West Street, Cedar Avenue and the Linda Vista Drive slip lane that could serve as a detention basin. Construction of a basin at this location would require clearing and removing approximately 75,000 CY of excavation, likely with shallow rock. To maximize volume, a 5’ tall wall would be constructed along a 300’ long section of the basin. An outlet structure and new piping would connect to an existing storm drain system in Cedar Avenue. Guardrail and fencing would also be needed for safety and security. Stormwater would be diverted from Spruce Wash and conveyed to the Wedge via a ±1,300-LF storm drain under Linda Vista Drive. Installation of the storm drain would include a diversion structure at Linda Vista Drive and curb inlets at Grandview Drive. The storm drain crosses several utilities in Linda Vista Drive. which would likely require relocation including franchise utilities and City of Flagstaff sewer and water mains.

#### Project Update:

- Staff is in negotiations with a Construction Manager at Risk (CMAR)
- Geotechnical work and Survey to support design is schedule for March
- Staff has four separate design firms starting on design
- The first of several Guaranteed Maximum Price (GMP) for construction is tentatively scheduled to bring to Council on July 3<sup>rd</sup>.
- Construction logistics planning and project delivery timing are underway, it is likely that construction activities will start in the late summer/early fall of this year on one or two of the projects.



*Vicinity Map for Spruce Wash Drainage Improvement Projects*



*Overall Burn Map, 2019 Museum Fire shown in orange is the area that affects the Spruce Wash corridor*

## Private Development Projects

### DEVELOPMENT ENGINEERING SECTION

The Development Engineering Section continues to review IDS projects for adherence to City of Flagstaff Engineering Standards for both Subdivisions and projects requiring Site Plan or other Zoning Code entitlements. There continue to be significant projects under review in both the residential subdivision and commercial Site Plan categories. Major projects with significant Engineering involvement include the NAH new campus, additional phases of work in the Timber Sky subdivision and surrounding area, Canyon Del Rio Subdivision, Juniper Point Subdivision, Elkwood Multi-Family Housing.

#### Projects In Civil Plan Review –

- Three Subdivision Engineering Plan Reviews
- Nine Site Plan Engineering Plan Reviews

#### Projects In Construction or Permitting –

1. Nine Subdivisions in Construction or awaiting permits
2. Sixteen Site Plan Projects in Construction or awaiting permits

#### Highlighted Project – In-N-Out Burger

The In-N-Out project is scheduled to begin demolition of the existing building on Monday, March 13 following the pre-construction meeting. Public Improvements for this project consist of some on-site water main and a new sewer service connection. In addition, there are some associated ADOT improvements which include the already constructed median and turn-lane improvements along with a new 8-foot sidewalk along Milton Road. Additional ROW dedication to ADOT to be conveyed upon the completion of construction. Anticipating the completion of construction in mid to late Summer.

