

Post-Wildfire Flooding Update

March 28, 2023



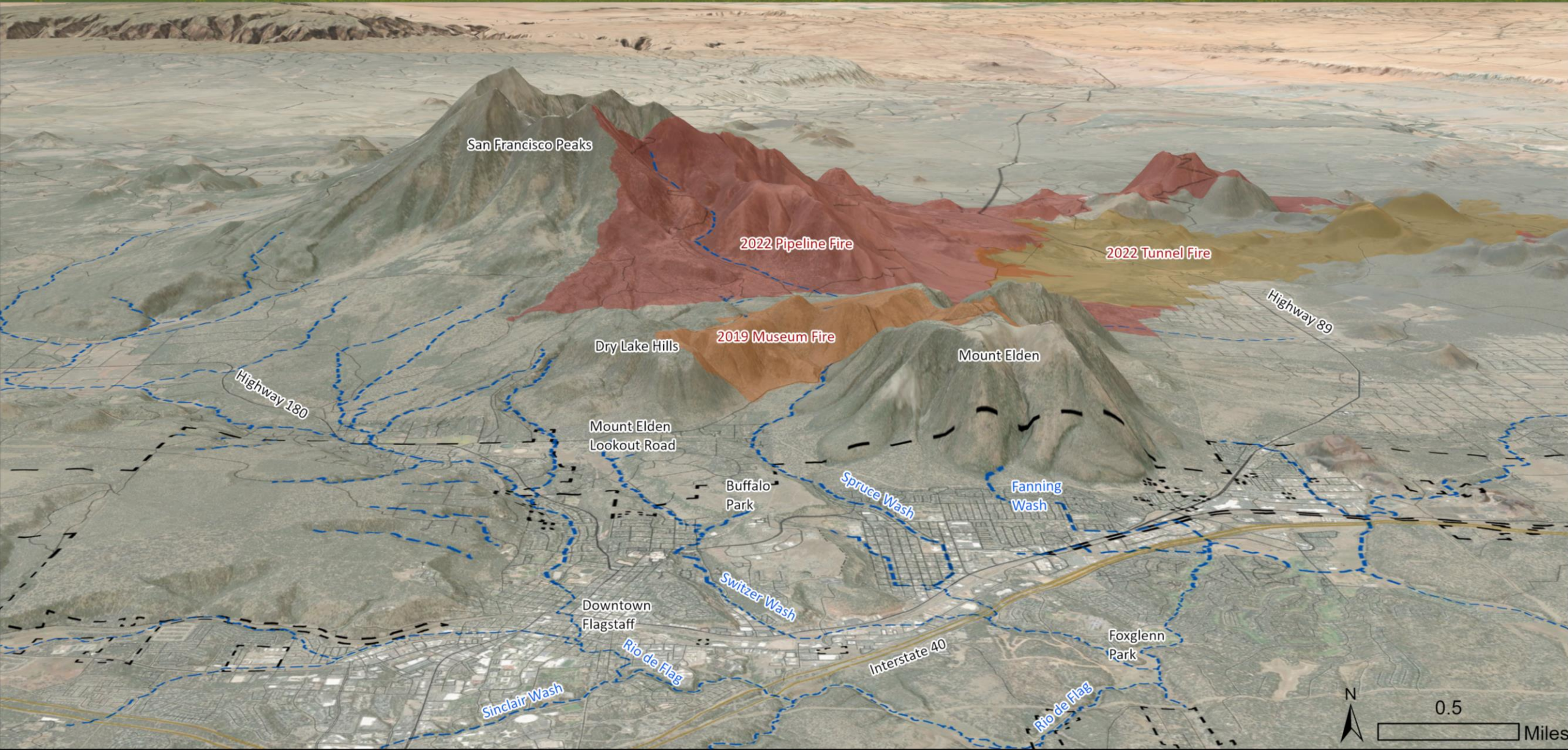


Objectives for tonight

- Spruce Wash updates – Muesum
- Schultz Creek updates – Pipeline West
- Spring flood mitigation planning and update
- Snowmelt runoff update
- Council discussion and questions



Overall map



Spruce Wash

(2019 Museum Fire)





Spruce Wash



- Hydrology and modeling indicates that an elevated flood risk remains.
- Bond projects (\$26M) are in design. Solid 30% progress expected by May.
- Technical Advisory Committee meets weekly and focus groups meet as needed.



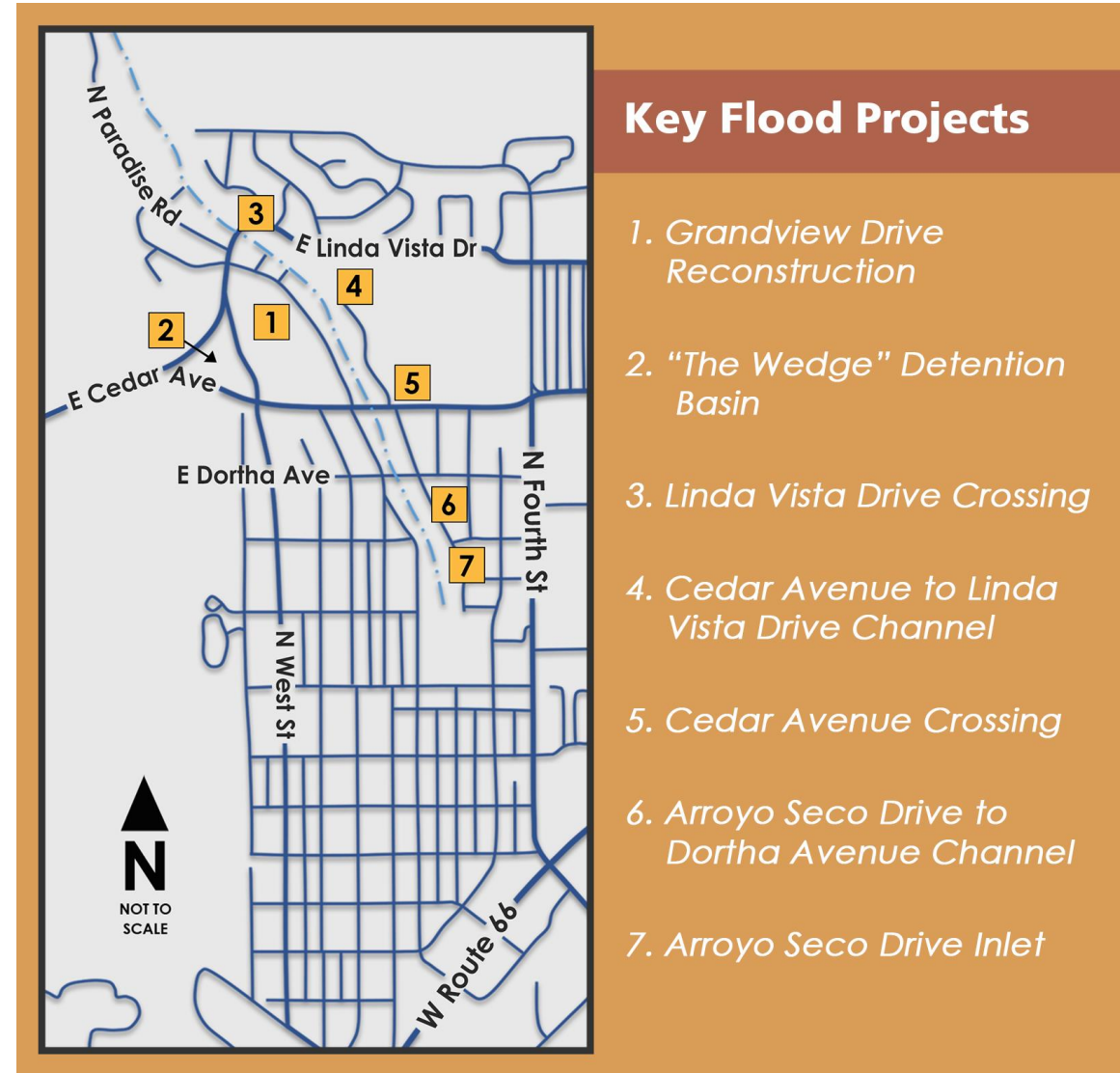


Suite of projects

• Projects in Design



- Reconstruction of Grandview
- The Wedge Detention Basin
- Upsize Linda Vista Crossing
- Improve Cedar to Linda Vista Channel
- Upsize Cedar Crossing
- Improve Dortha to Arroyo Seco Channel
- Construct Permanent Inlet at Arroyo Seco Townhomes





Construction Manager At-Risk process

- A CMAR has been selected through a qualifications-based process. We are working through negotiations on a design services contract.
- Our CMAR will retain a public relations firm.
- We have retained four separate design consultants for the suite of projects.
- We have a survey consultant and geotech consultant in the field now completing work to support design.





Project delivery schedule

- Guaranteed Maximum Price (GMP) #1 on July 3 – Grandview Utility Relocates – Construction will start post monsoon.
- Final plans for all projects completed by December 2023
- GMP #2 in February of 2024.
- Construction would start in the spring of 2024 and would continue through the fall of 2025.





Park Way Basin



- County project has been awarded to the contractor.
- Construction equipment will be in the area through June.
- Utility relocates and tree work has now begun.
- City/County intergovernmental agreement for maintenance and operations is in development.
- Coconino County Flood Control District will provide direct communication updates.
- Natural Resources Conservation Service (NRCS) funding is secured and programmed for expense by June 30, 2023.



Schultz Creek

(2022 Pipeline Fire)





Schultz Creek project delivery

- Mitigating the flood threat for Stevanna Way, Coconino Estates, downtown, and Southside as a result of the Pipeline Fire.
 - Detention Basins – Seeing use this month!
 - Basins to Hwy 180 (NRCS EWP, \$679,000)
 - Hwy 180 Crossing (30% design, TAC)
 - Frances Short Pond (on hold due to snowpack)



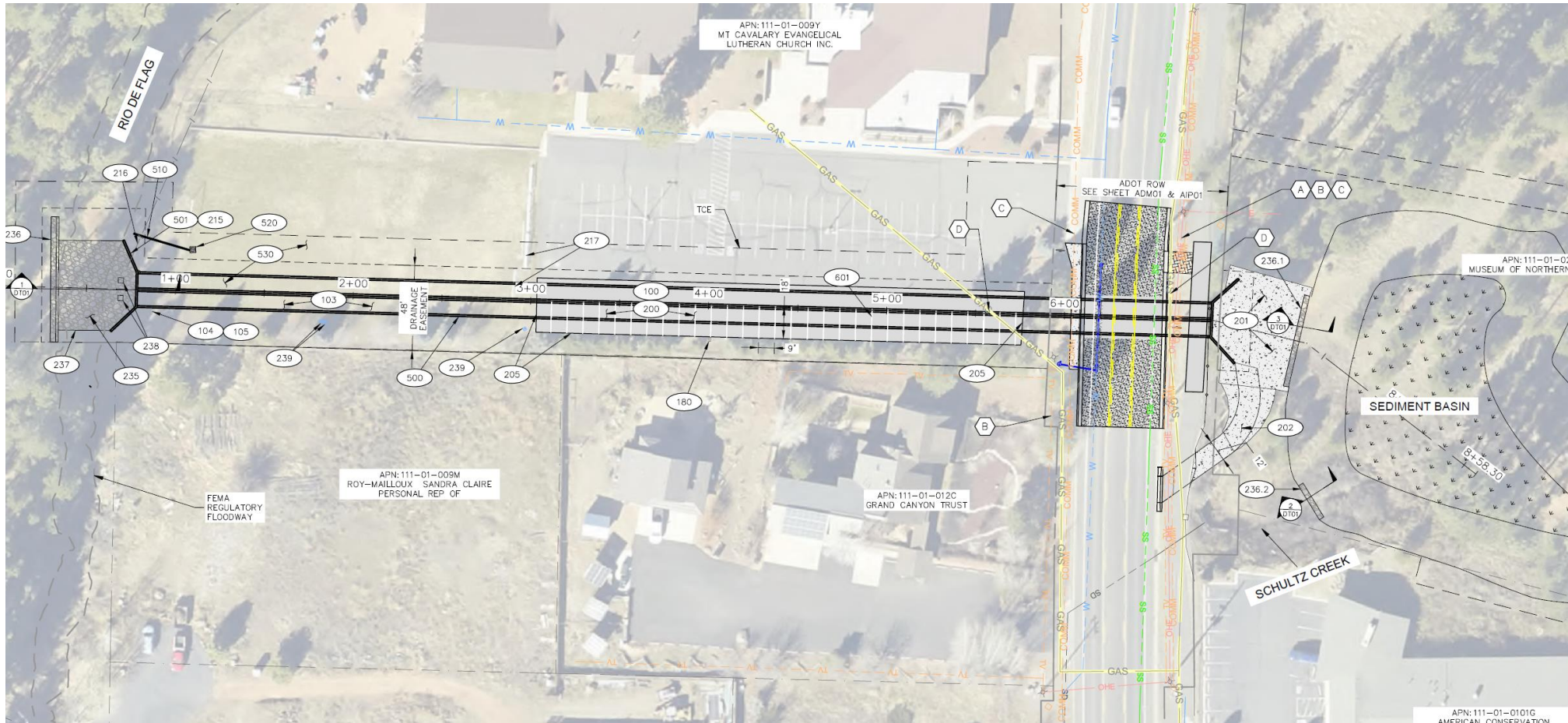
Schultz Creek channel

- Emergency Watershed Protection (EWP) funded at \$630,118 plus \$49,000 for technical assistance, City match funded through new Stormwater rate or Dept. Of Forestry and Fire Management match.
- County project on Elden Lookout Road moving through design (Moving towards 90% design)
- Both projects are designed to reduce sediment and downstream debris impacts in Coconino Estates, downtown, and the Southside neighborhoods



Schultz Creek at Hwy 180

- Moving quickly to 60% and 90% designs: full design and No-Adverse Impact Analysis by June
- Funding is an on-going challenge, hope is to avoid "Federalization"
- Property acquisition discussion on-going, some issue with a restrictive covenant.





Frances Short Pond dredging

- On hold due to snowpack and current overflow condition
- Will assess in the coming month



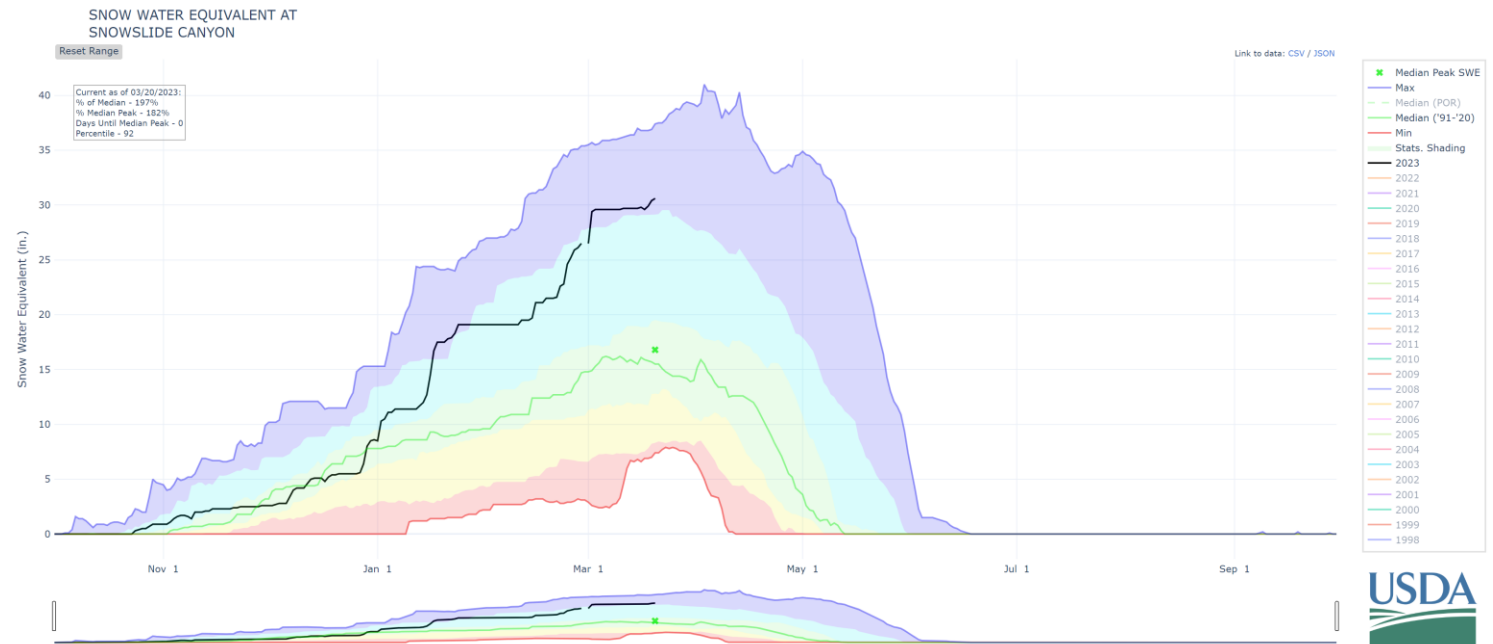
Spring Runoff





Spring runoff update

- Recent snowpack is near or at record levels (~ 32 inches of SWE on the Peaks as of 3/22).
- Stormwater continues to monitor stream gauges and NWS predictive modeling and will react with the appropriate Divisions as warranted.
- Flood impacts have been moderate (at a community level) but there is continued threat of rain-on-snow events and there have been properties damaged to date.
- Upper Lake Mary is full (good news!)





Spring runoff update



Foxglenn Park,
3/22/23



Spring runoff



Schultz Creek looking downstream into the flood control basins, 3/19/23



Neighborhood mitigations

- Short-term mitigations update in April
 - New flood risk models will be available for both flood corridors
 - Flood alert thresholds are being evaluated, may be adjusted due to Schultz Basins and seasonal rain data collected
- Mitigation funded by stormwater rate adjustment
 - Sandbags, barrier purchase
 - Engineering assessments for private property
 - Individual assistance for elderly and disabled
 - Call center support – 928-213-2102 Monday to Friday business hours

Discussion

