

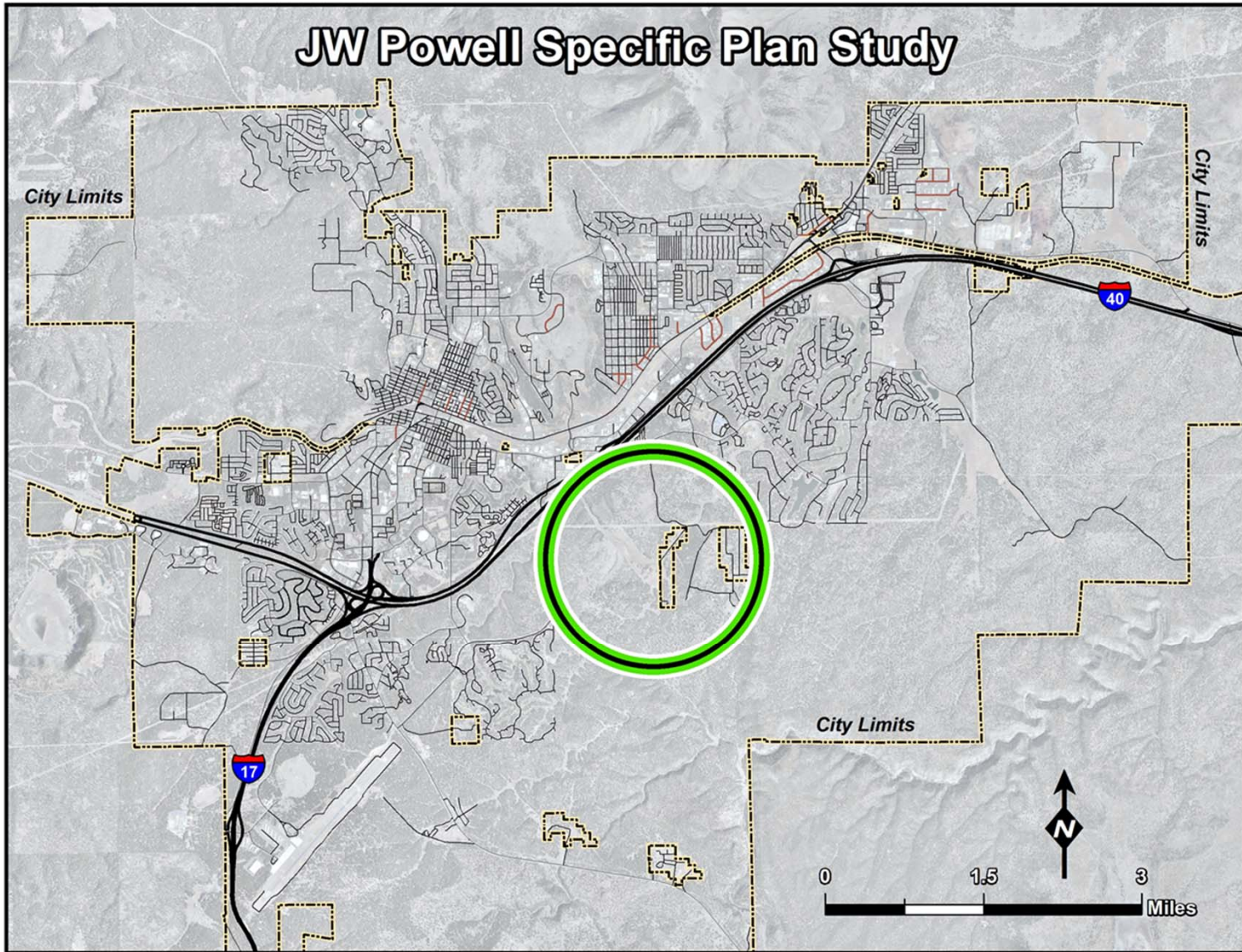
J.W. Powell Blvd Specific Plan Study

Project Update

30 May 2023

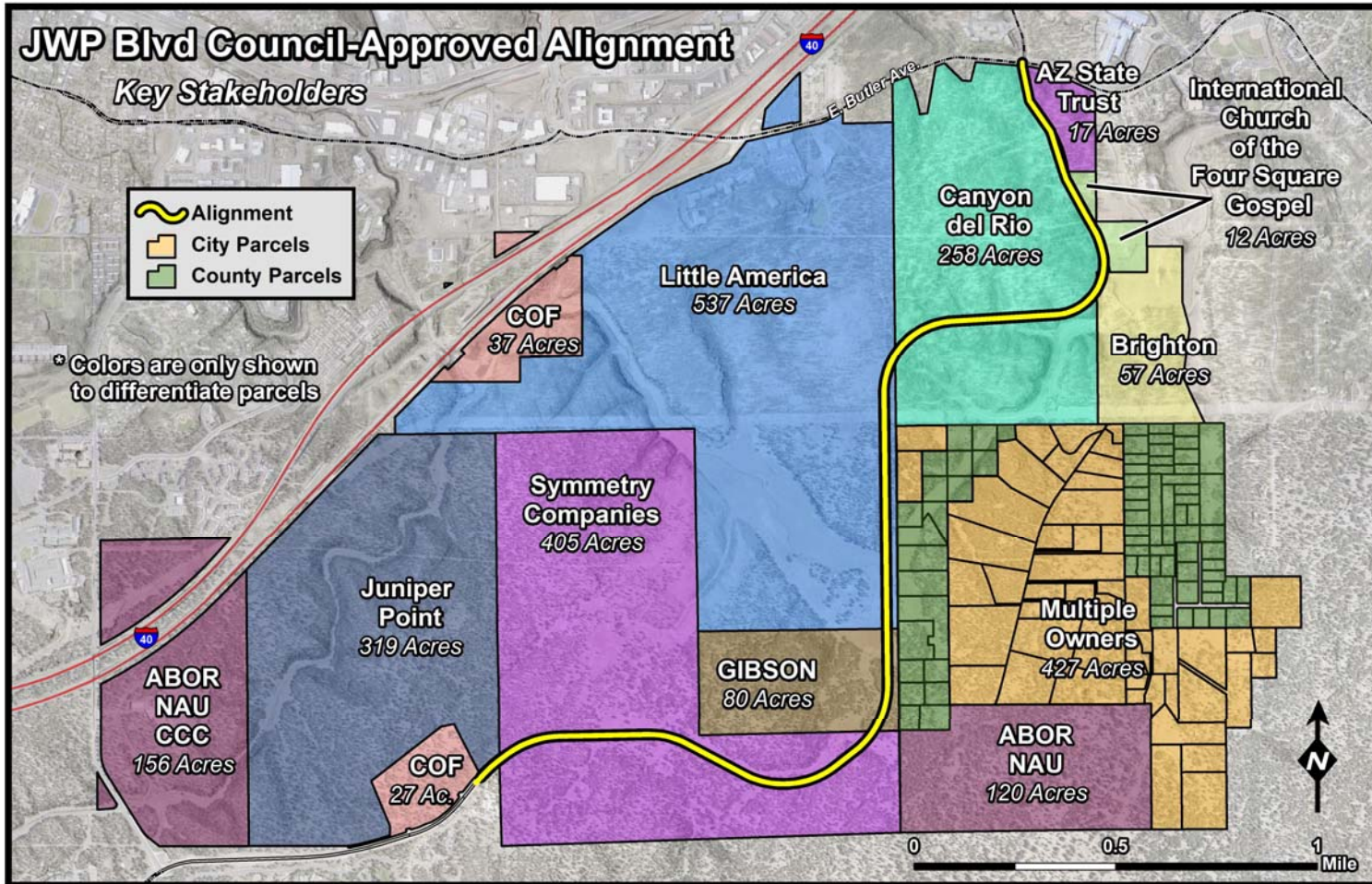


JW Powell Specific Plan Study





Key Stakeholders



- Council-Approved Alignment
- ❖ 7 July 2022



JWP Specific Plan Study



- **Project Team:**

- City Staff
Multiple Departments
- Community Service Providers
Mountain Line, MetroPlan,
FUSD, AZ Forestry & Fire
Management, Northern
Arizona Healthcare, Flagstaff
Arts Coalition, USPS, AZ Game
and Fish, Coconino County, AZ
Board of Regents (NAU)

- Consultant –

- Peak Engineering –
Engineering Design
Subconsultant
- Swaback –
Architecture & Planning



Update



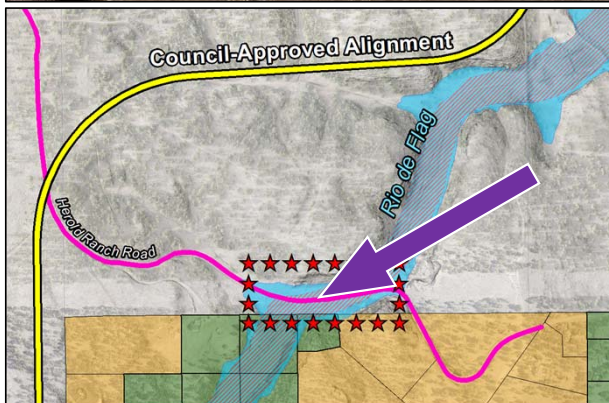
- **Update to City Council** (*October 2020*) – *Land Use Framework*
- **SP Owners Open House & 1-on-1 Meetings** (*Jan to Spring 2021*)
- **Update to City Council** (*October 2021*) – *Change Order 4*
- **Individual Mtgs with LP Owners** (*Fall 2021/Spring 2022*)
- **Group Mtg with LP Owners** (*May 2022*)
- **Project Update to SP Owners and Website** (*May 2022*)
- **Project Update to SP and LP Owners and Website** (*June 2022*)
- **Update to City Council** (*June & July 2022*) – *Final Alignment Selected*
- **Project Team Scopes Specific Plan** (*Spring 2023*)
- **Flooding Meetings and Discussions** (*Spring 2023*)



Flooding Update – Herold Ranch Road



18 April 2023





What is a Specific Plan?



- The **purpose** of a Specific Plan is to provide a greater level of detail for a specific geographic area or element of the General Plan, and to provide standards for the systematic implementation of the General Plan
(Ord. 2015-13, Amended, 06/02/2015)
- **JW Powell Specific Plan** will focus on land use framework, activity center locations, transportation network, trails and open space, and public facilities (i.e., *Fire station*)
- Will **inform** the Regional Plan Update with more specificity for the area



Change Order 5



• **Scope of Services**

- Project Management and Public Involvement
- Critical Review of Background Information
- Analysis of the Land Area
- Preliminary Plan Framework
- Crystalizing the Planning Strategy
- Specific Plan Report
- Traffic Planning Support
- Time Requested = *601 calendar days*
- Cost = *\$220,142.62*



J.W. Powell Specific Plan Study



COMMENTS & QUESTIONS

Michelle McNulty

Planning Director

michelle.mcnulty@flagstaffaz.gov

Office :: 928.213.2607

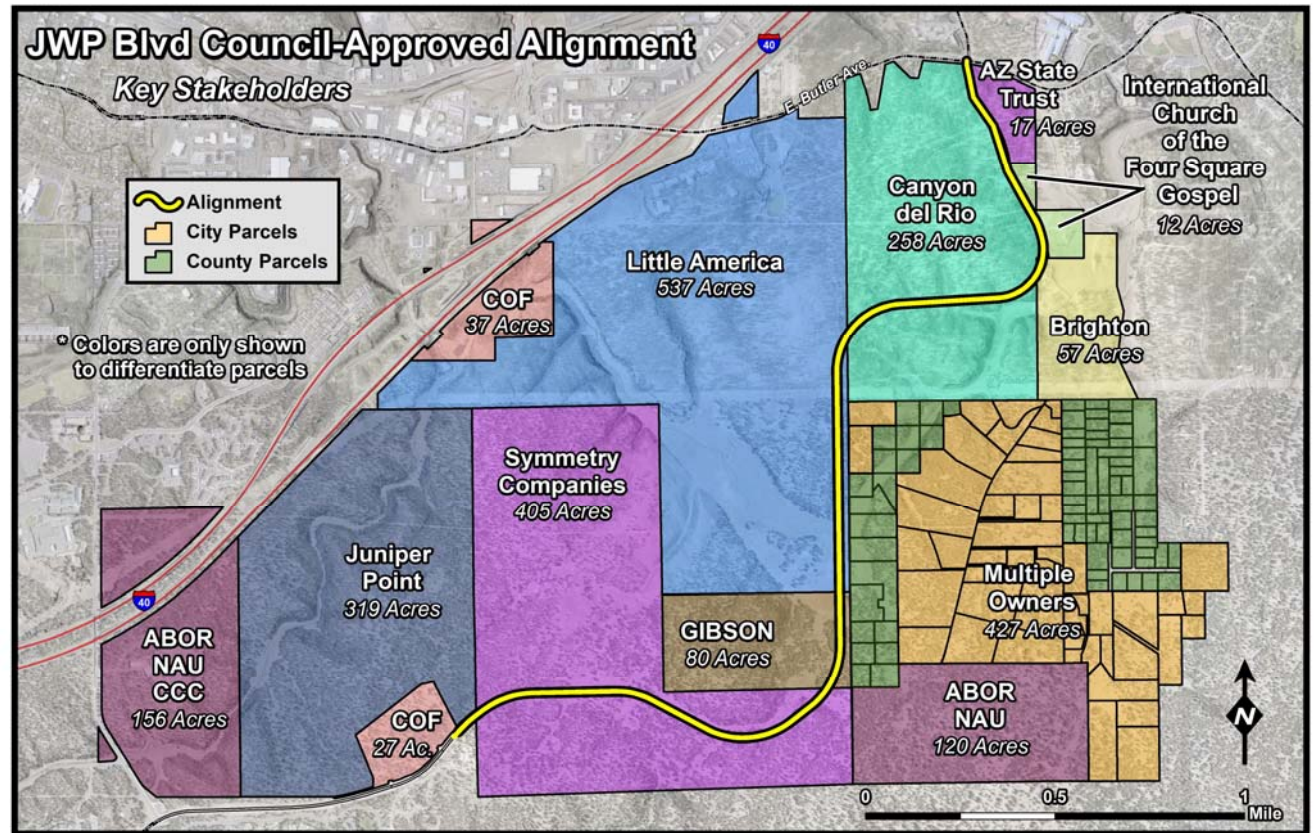
David Pedersen

Project Manager

Capital Improvements

dpedersen@flagstaffaz.gov

Office :: 928.213.2677



www.flagstaffaz.gov/jwpspecificplan