

A photograph of a bicycle covered in snow, leaning against a black pole in a snowy urban setting. The background is blurred, showing buildings and trees. The text "PROSE and Multi-Modal Snow Operation" is overlaid on the left side of the image.

PROSE and Multi-Modal Snow Operation

- 
- A grayscale photograph of a city street during winter. The ground is covered in snow. Several cars are parked along the curb, partially obscured by snow. In the foreground, a signpost stands with a blue sign that reads 'DOWNTOWN' and 'SUN - THUR 11AM - 5PM' and 'FRI - SAT 11AM - 5PM'. A black metal fence is visible on the right side of the frame. The background shows buildings and bare trees.
- The Shift in Snow Operations
 - Future and Growth with the Community
 - Undefined Expectations
 - Courtesy Berm Relocation Program
 - FUTS – Multi-Modal – Sidewalks
 - Impacts and Resources
 - Peer Review – Best Practices
 - Next Steps



The Shift – the movement toward a growing community's desires and needs

Changes in climate and accumulation

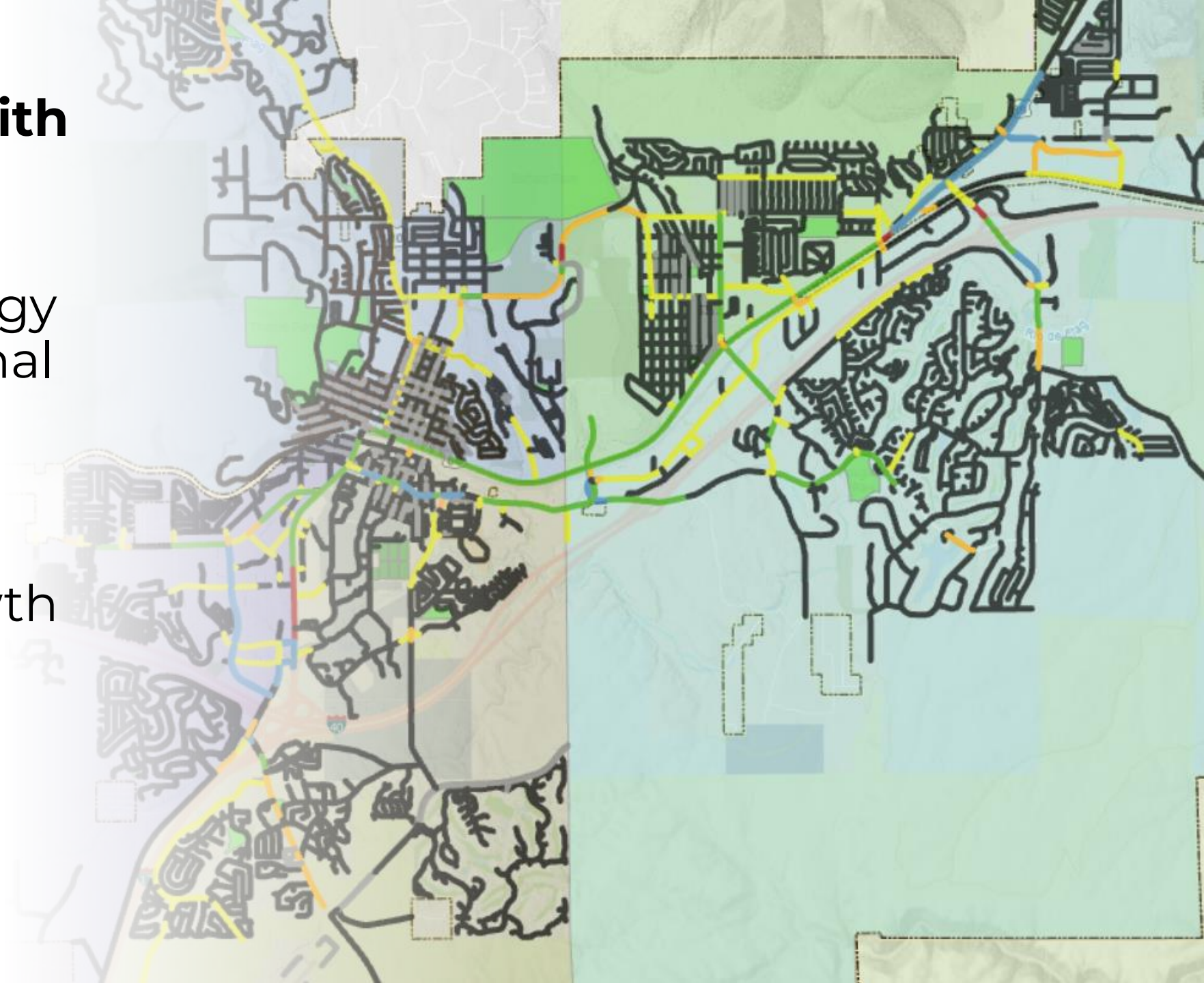
Review of prioritization of routes/assignments

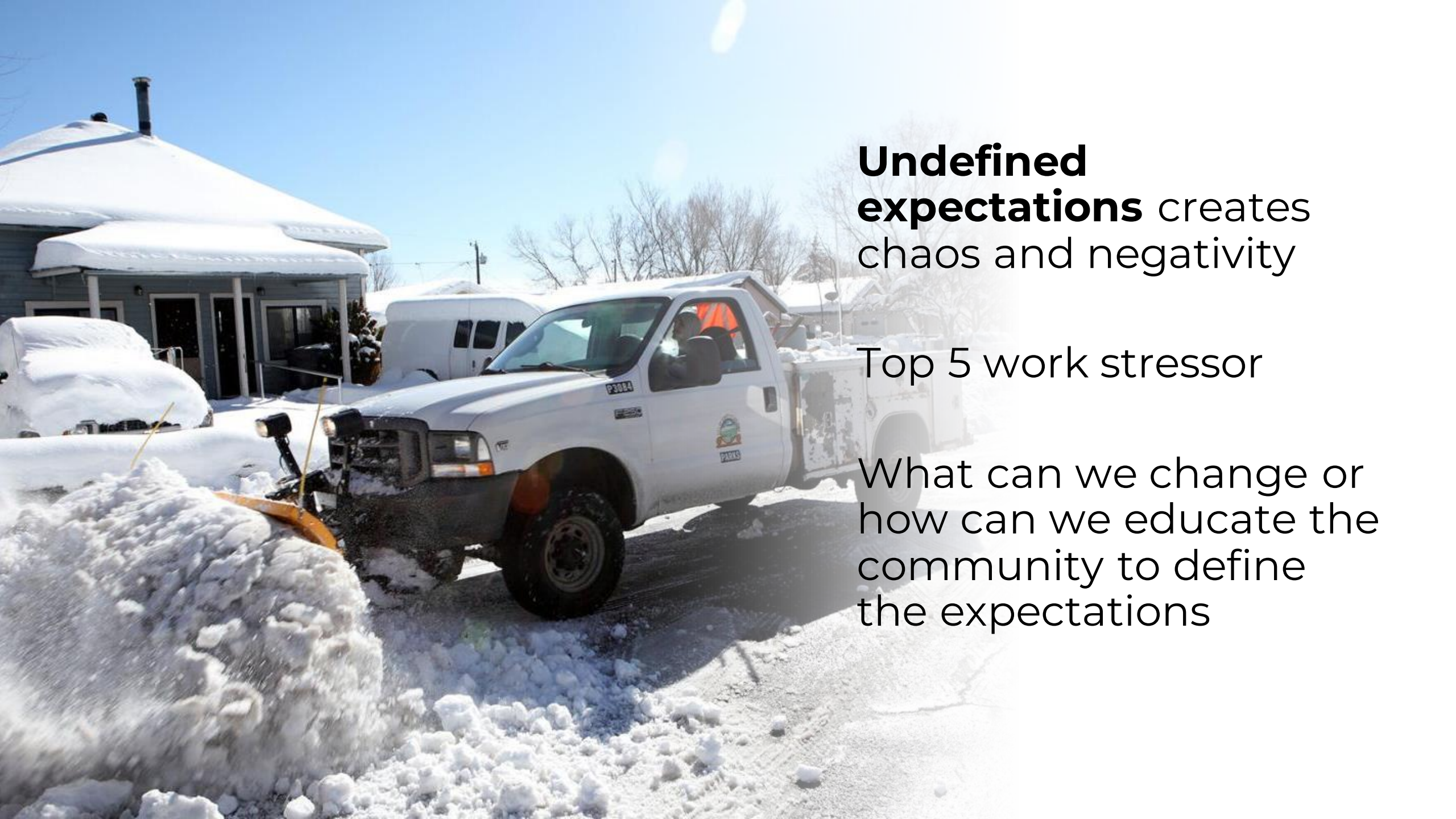
Post storm obstacles

Future Growth with the Community

What is the strategy to service additional multi-modal infrastructure

How will the growth match the community need





Undefined expectations creates chaos and negativity

Top 5 work stressor

What can we change or how can we educate the community to define the expectations



Courtesy Berm Relocation Program

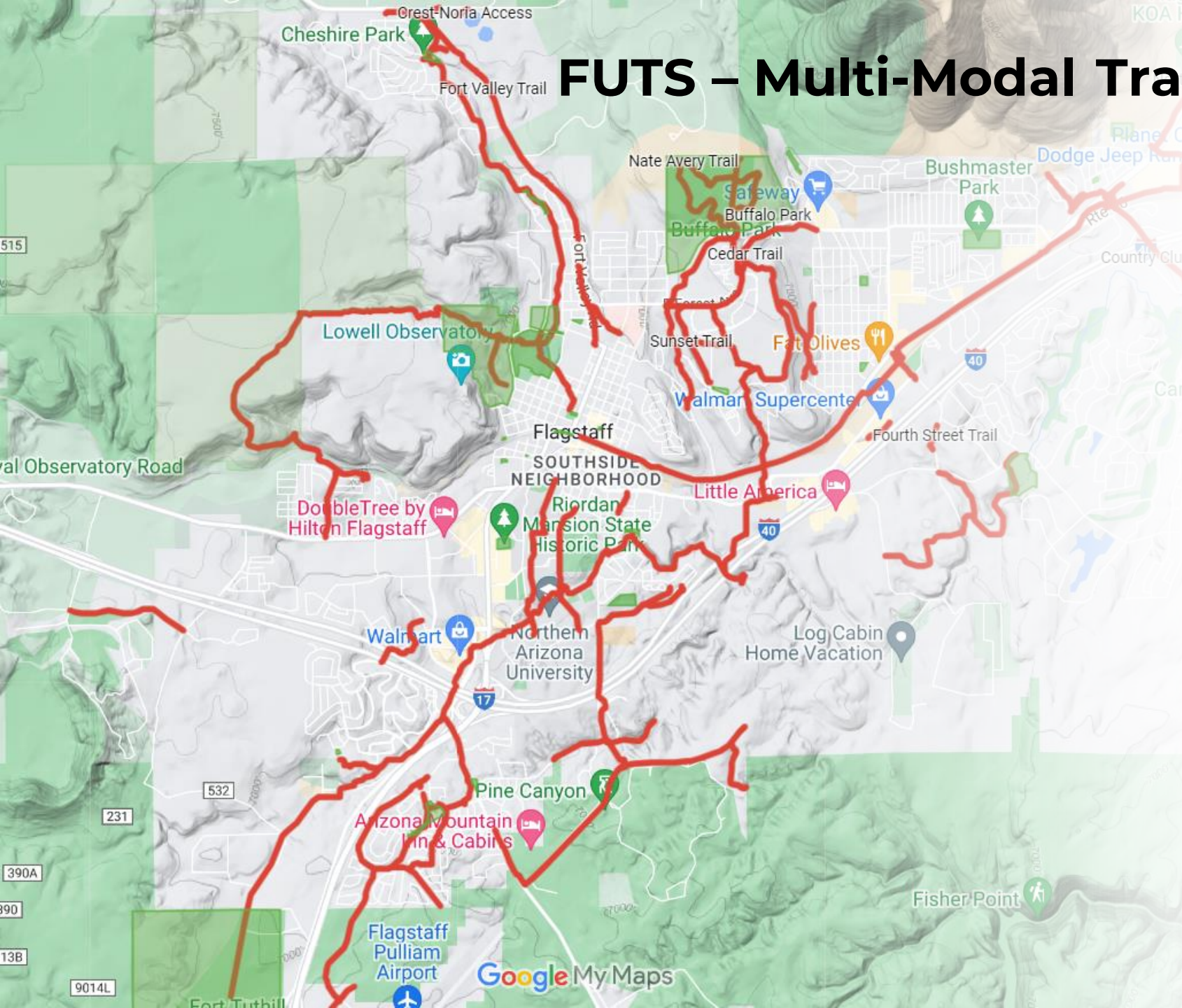
Definition of program

In 2021/22, there were
86 residences. In
2022/23 165 residences

PROSE innovation this
season

Outlook and Future

FUTS – Multi-Modal Trails and Sidewalks



Current operation

What **could** we change

What **should** we change

As more miles are developed how do we manage



Impacts and Resources

Minimal change to resources over the decades yet maximum change to impacts

Without a financial model to cover these additional impacts on the resources how do we manage?

Peer Review and Best Practices

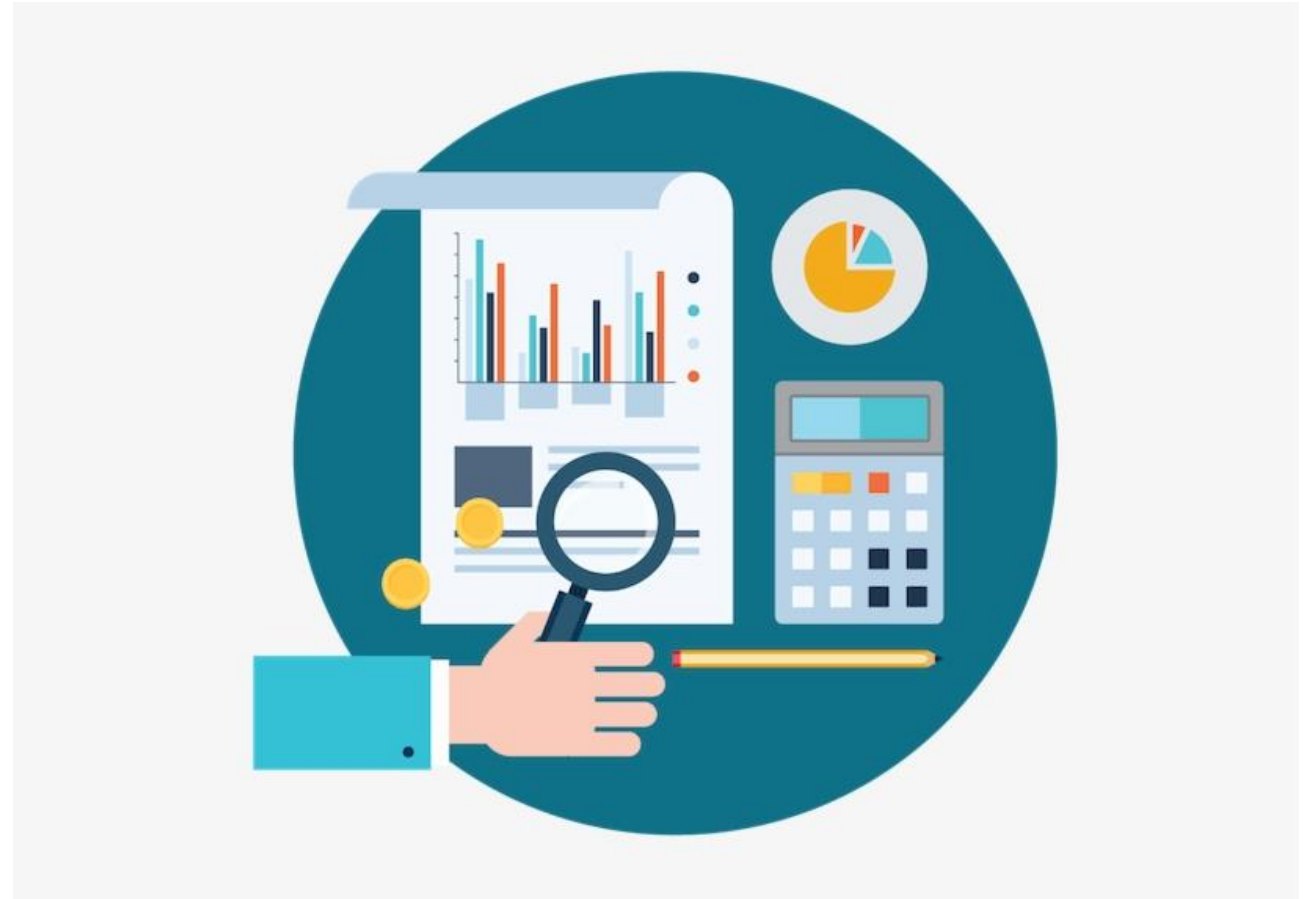
What are the “common practices” in similar climates?

Street priority levels

Emergency zones

Accumulation method

GIS mapping to inform/educate





THIS WAY

THAT WAY

Next steps

ANOTHER WAY