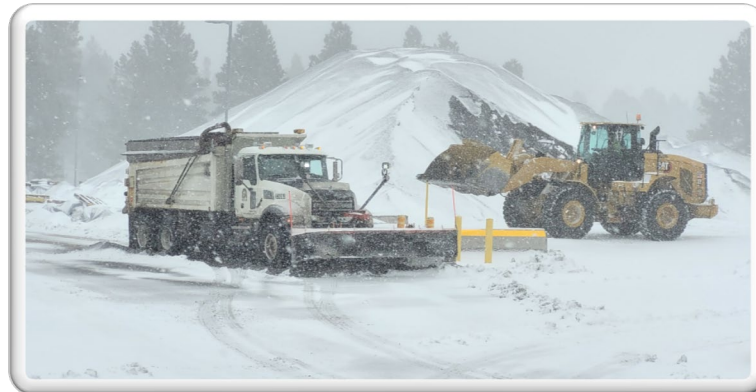


City Snow Operations



Presentation Objectives

- Review of City Snow Operations
- Streets Snowplow Equipment
- Streets Staffing
- Parks Snowplow Equipment
- Parks Staffing
- Current Snow Operations Policy
- Community Expectations and Parking Ordinance
- Post-event Operations
- Financial Impacts



Streets Snowplow Fleet

- 20- 10-Wheel Snowplows
- 4- 6-Wheel Plow Trucks
- 9- Motor Graders
- 5- Front-end Loaders
- 2- Bobcat Toolcats
- 1- Truck Mounted Snow
Thrower





Streets Staffing



Streets has 24 (32 fully staffed) dedicated team members

1-Administrative Specialist

1- Manager

4- Supervisors

9- Streets Operations Technician III

7- Streets Operations Technician II (1- Vacancy)

8- Streets Operations Technician I (5-Vacancies)

1- Traffic Signal Technician II (Vacant)

1- Traffic Signal Technician I (Vacant)

18- Operational Staff member through the snow season

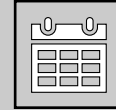




Snow Shifts- Equip & Staffing



Day Operations 10am-10pm



Night Operations 10pm-10am



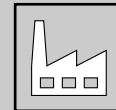
2- Snow shift supervisors



2- Snow shift supervisors



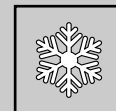
9- Operators



9- Operators



3-5 Snow temps (as available)



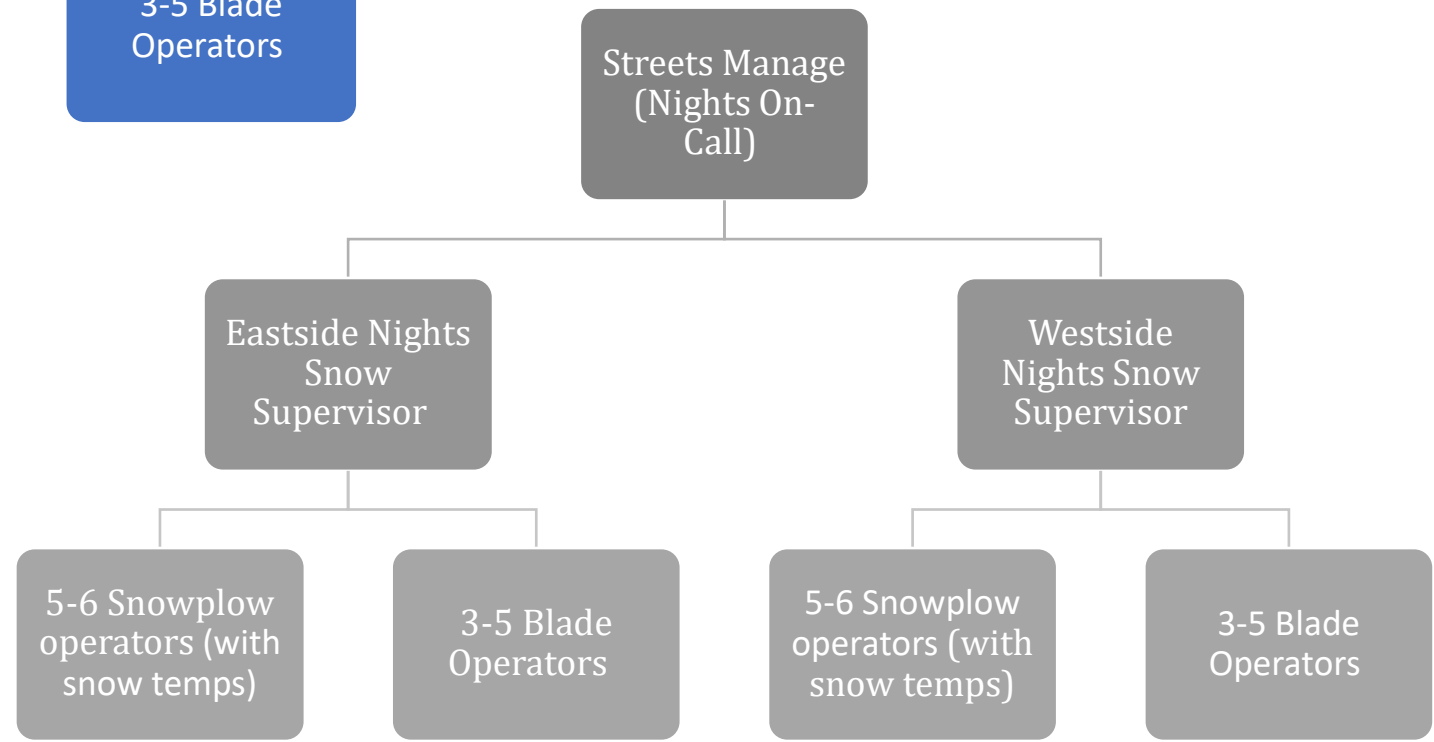
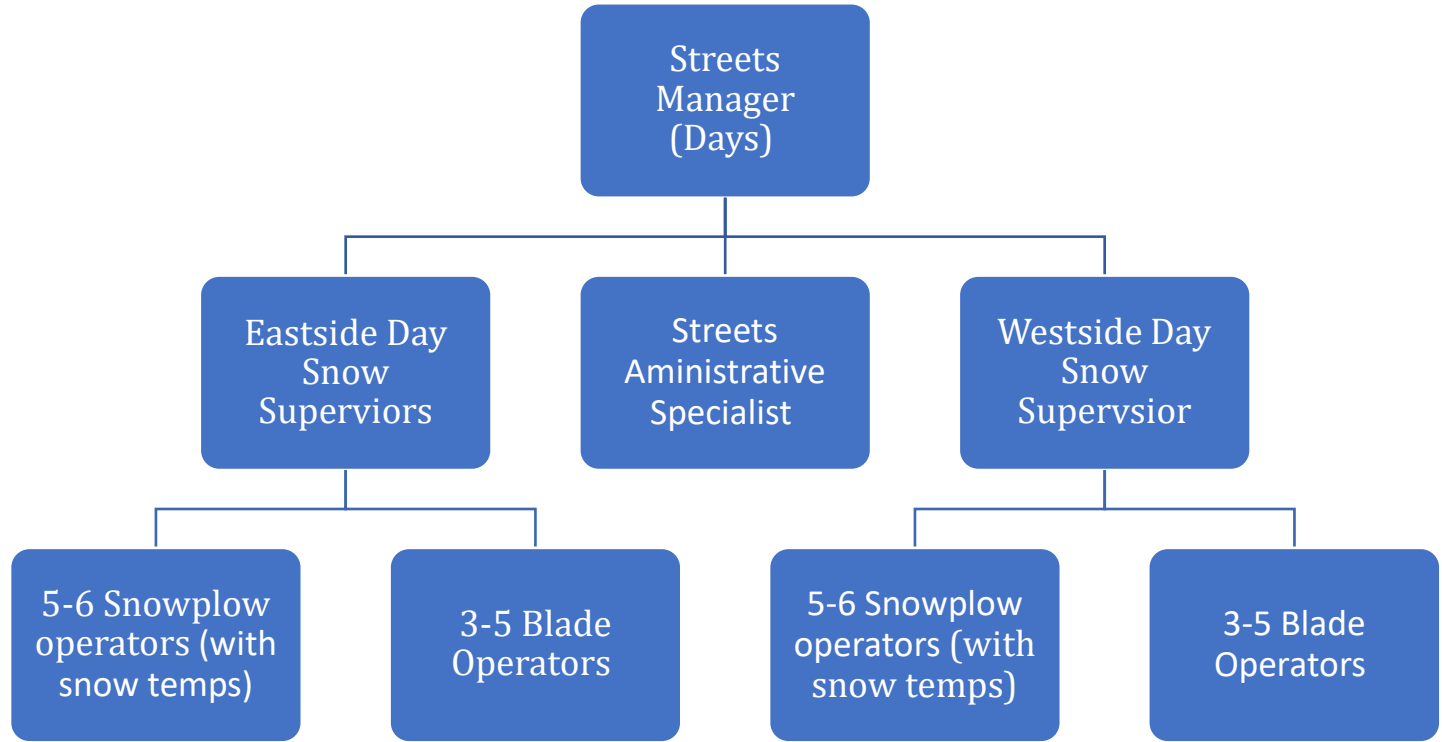
3-5 Snow temps (as available)



Our Goal -
12 Snowplow trucks
5 Motor Graders
1-2 Bobcat Toolcats



Our Goal
12 Snowplow trucks
9 Motor Graders
1-2 Bobcat Toolcats



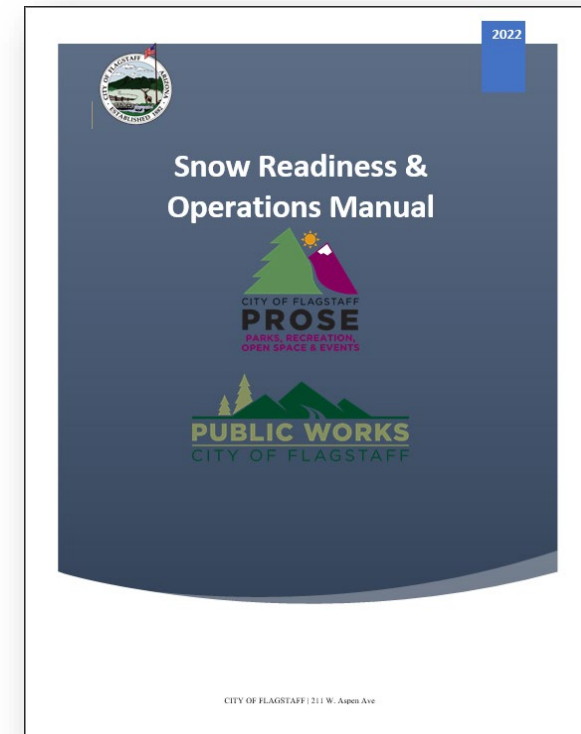


Snow Response Policy



2022 Snow Readiness & Operations Manual

- An operational guide which is updated annually.
 - This manual is distributed to all operators and snow temps.
- The purpose of this document is track and enhance best practices while giving structure to snow operations.
- Each year, we review nationwide policies, best practices, and technology to ensure we align and provide the best public services possible





Streets- Snow Plowing Priorities



Priority Routes – Open and Passable at all times

- Main Routes and Arterials
- Major Hills
- Downtown Core
- FUSD & Mountain Line Bus Routes

Secondary Priority Routes - Residential Streets & Cul-de-sacs

Residential streets are not plowed until priority one routes are completed and more than four inches of snow has accumulated on residential roadways.

❖ Ice control for the duration of each storm event.



Streets- Snow Plowing Priorities

Residential Streets and Cul-de-sacs

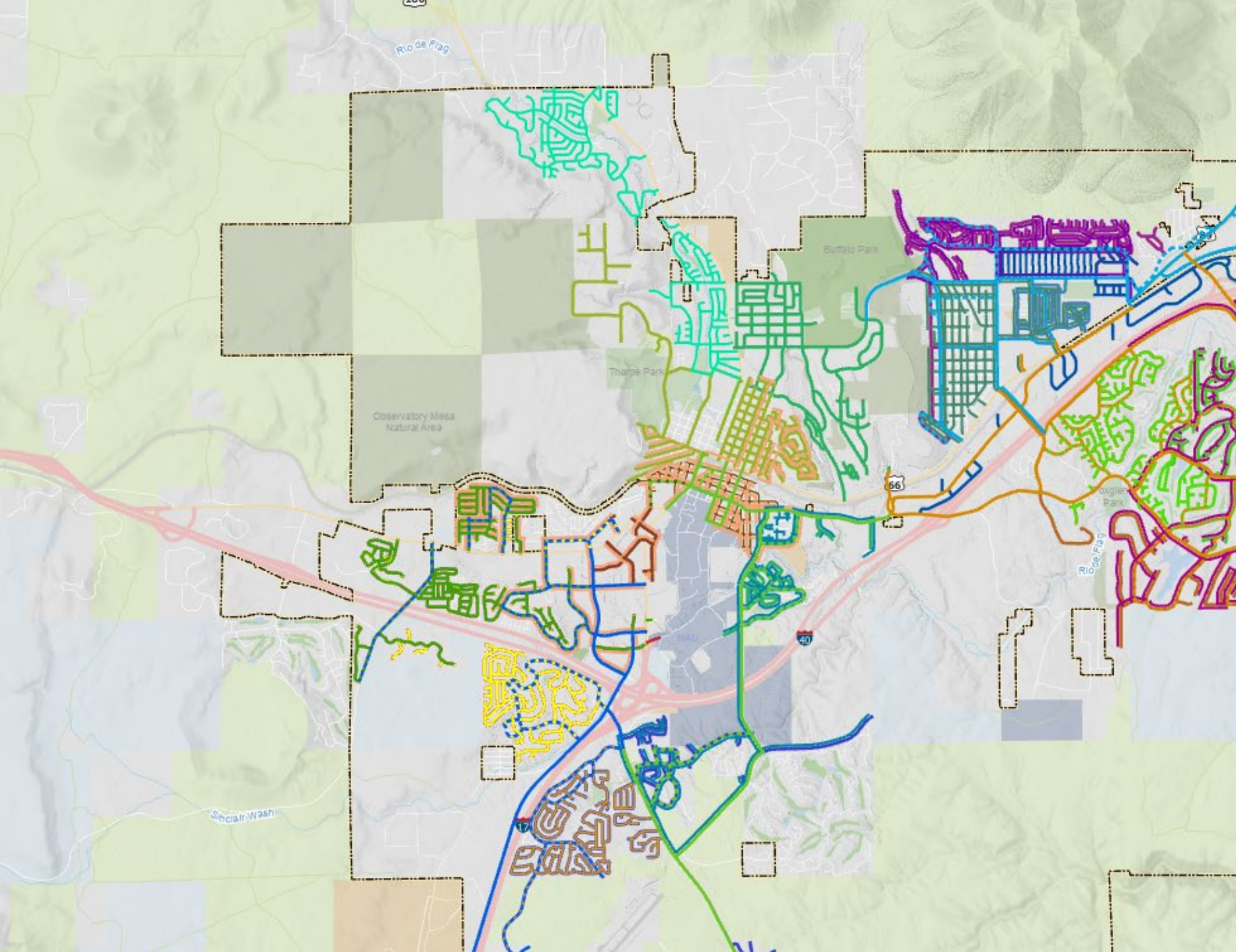
Residential streets are not plowed until priority one routes are completed and more than four inches of snow has accumulated on residential roadways.

Second priorities will be completed:

within 12 hours after up to 8 inches of accumulation

within 18 hours after 8 to 12 inches of accumulation

within 36 hours after more than 12 inches of accumulation



Snow Operations Public Works Internal

Streets - Priority Arterial Routes

Priority Arterial Routes

- Truck 52
- Truck 53
- Truck 54
- Truck 55
- Truck 65
- Trucks 52 and 54

Streets - Priority Collector Routes

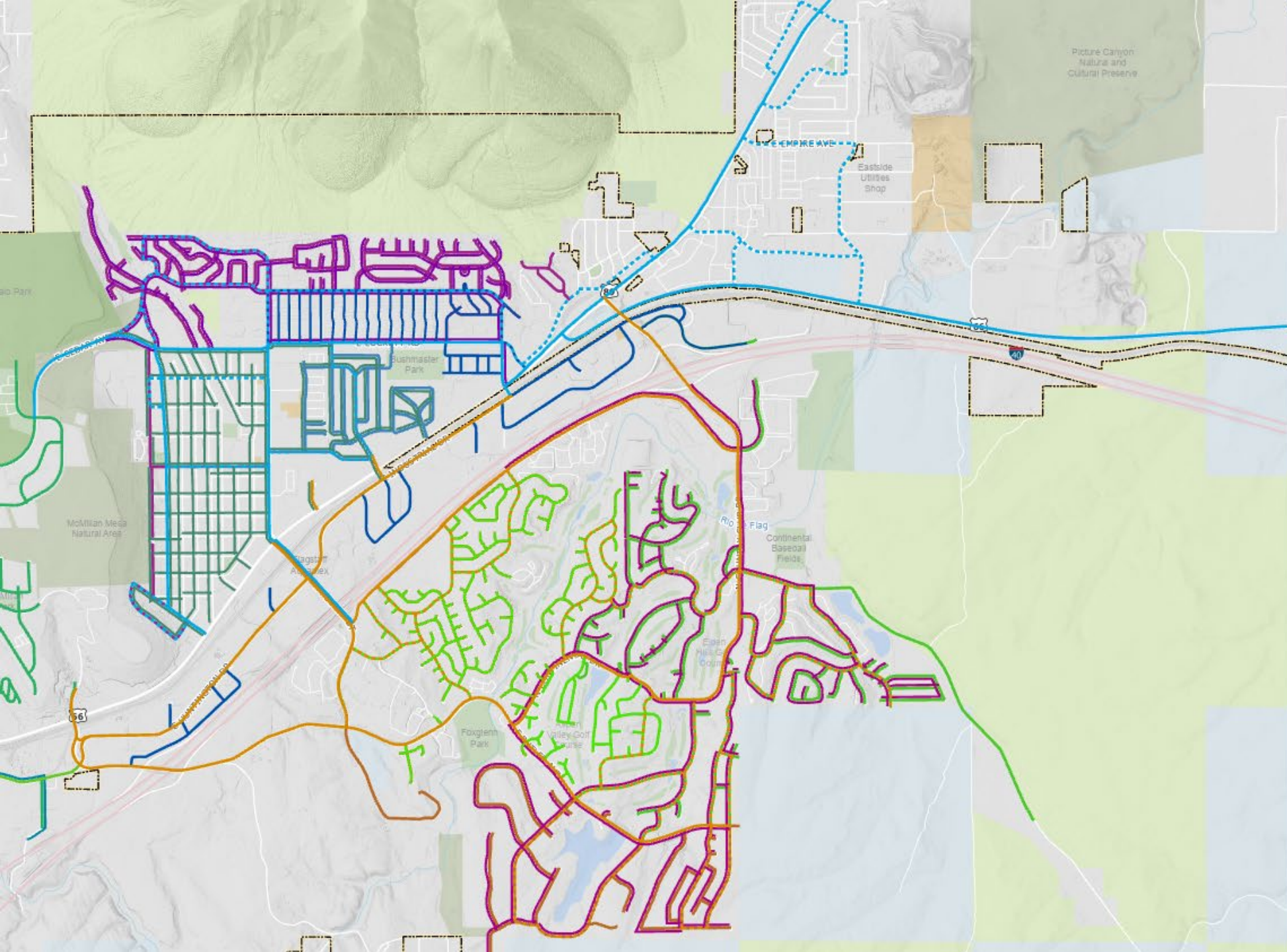
Priority Collector Routes

- ⋯ Truck 52
- ⋯ Truck 53
- ⋯ Truck 54
- ⋯ Truck 55
- ⋯ Truck 65

Streets - Truck Routes

Residential Routes

- Truck 50
- Truck 51
- Truck 56
- Truck 57
- Truck 58
- Truck 61
- Truck 62
- Truck 63
- Truck 64
- Truck 66
- Truck 146
- Truck 147
- Truck 150



Snow Operations Public Works Internal

Streets - Priority Arterial Routes

Priority Arterial Routes

- Truck 52
- Truck 53
- Truck 54
- Truck 55
- Truck 65
- Trucks 52 and 54

Streets - Priority Collector Routes

Priority Collector Routes

- - - Truck 52
- - - Truck 53
- - - Truck 54
- - - Truck 55
- - - Truck 65

Streets - Truck Routes

Residential Routes

- Truck 50
- Truck 51
- Truck 56
- Truck 57
- Truck 58
- Truck 61
- Truck 62
- Truck 63
- Truck 64
- Truck 66
- Truck 146
- Truck 147
- Truck 150
- Truck 152

Streets - Grader Routes

Parks Snow Equipment & Staffing

Equipment

10– Plows on pickup trucks

1--Toolcat

1--Cinder Spreader

6 –Multi Purpose Landscape Tractors & Backhoes –
(Competing Operations)

4 – Snow throwers



Parks Snow Equipment & Staffing

Parks Staffing

1-- Parks Manager

4-- Parks Supervisors

10-- Parks Technicians

12-- Parks Maintenance Workers (2 current vacancies)

6-- Temporary/Seasonal Workers (5-6 current vacancies)

Completed Assignments:

0%

Assigned:
342



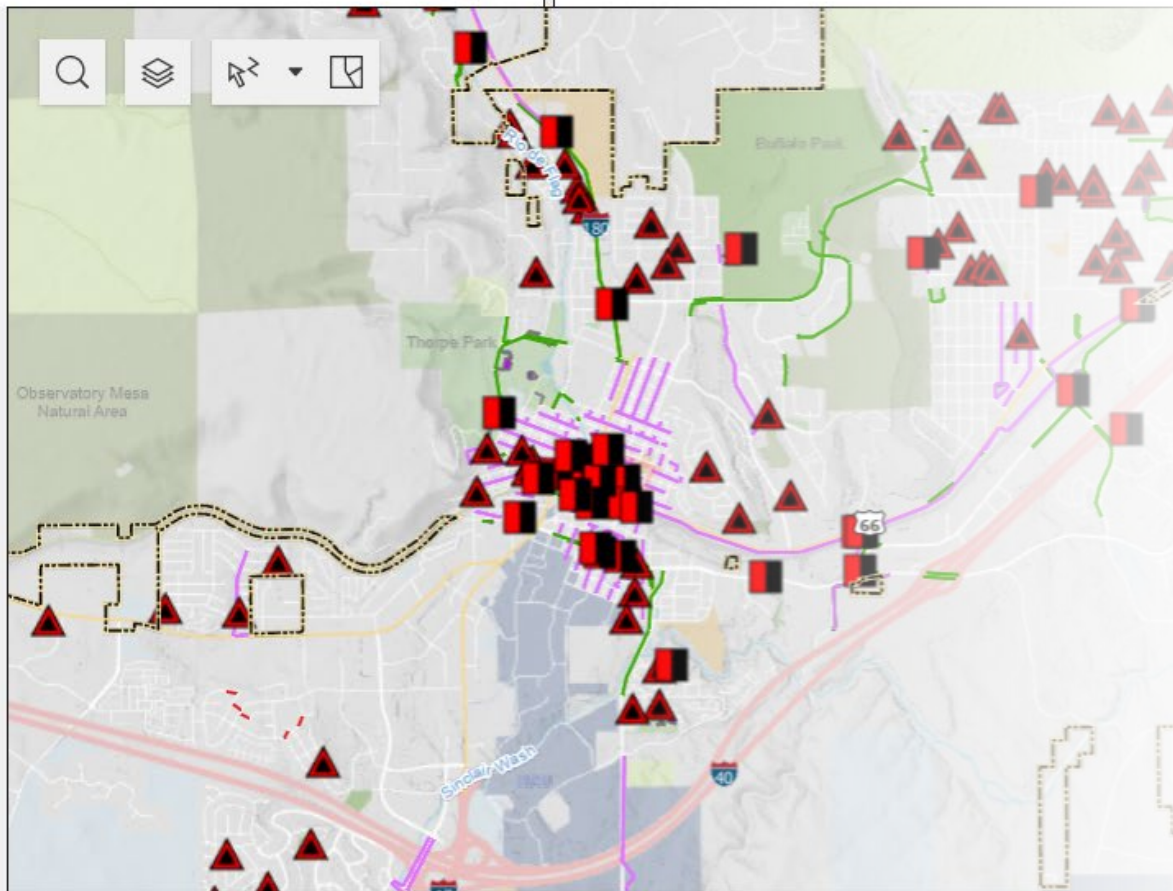
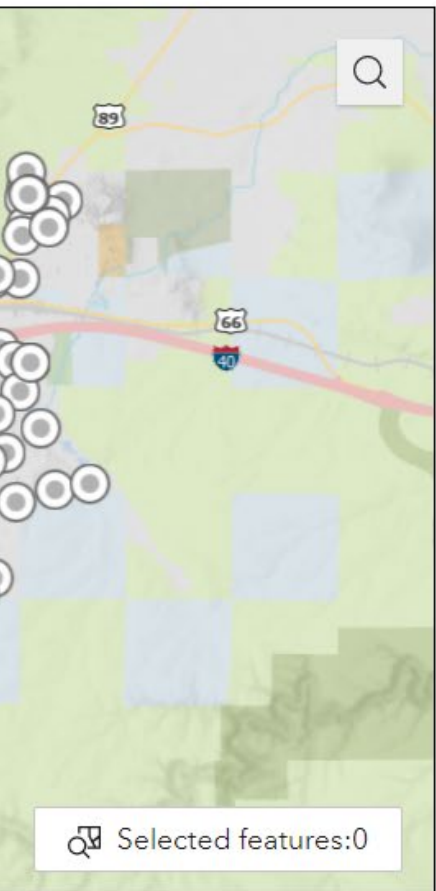
Declined:
0

Unassigned:
0



Paused: 0

Parks Snow Shift Staffing



- Operation is 24/7 with 12-hour shifts when applicable
- Shifts typically 4 AM, 6 AM and 9 AM start times
- 2 AM hauling time for downtown/Heritage Square

Selected features:0



Parks Responsibilities



Priorities of routes, in order – over 340 assignments

- Parking lots of City-owned buildings – 63 parking lots
- City-owned sidewalks and FUTS system (concrete/asphalt sections)
- Heritage Square
- Dedicated City Alleys
- Courtesy Berm Service, when applicable
- Entrances to FUTS – non aggregate only
- Parking lots at park locations
- Stairways, walkways, skate tracks and BMX track in City parks



Streets Responsibilities



Event Responsibilities

- Streets Plow 700+ Lane miles of roadway.
- This equates to 2600 miles of traveled to plow roads 1 time.
 - This includes emergency lanes, shoulders, (when possible), bike lanes, and turn lanes

Post-event Responsibilities

- Ice cinders are applied to roadways after the heaviest snow has fallen for more effective and efficient use.
- Snow hauling operations from, downtown core, Butler ave, 345 Cul-de-sacs



Day Time Snow Deviations

- Community Expectations vs. Policy
 - Community calls for service that led to deviation of snow routes
 - Day time traffic, accidents and parking conflicts create route disruption
 - Severe weather and suspended operations for safety
- Day time Emergencies
 - Accident scene at the request of PD or Fire
 - Signalized intersection/sign issues



Post Event

- Snow hauling operations
 - Downtown Parking
 - Main arterial roads
 - Cul-de-sac snow removal
- Intersection clean up and push back
- Signage and damage repairs
- Prolonged Ice control and trouble spots
- Ice Cinder sweeping
- Roadway damages and Potholes





Financial Impacts



Streets sole operational funding source is from the Highway User Revenue Fund (HURF)

Operational allocations for Snow and Maintenance

- **\$50,000** in annual snow operational funds (not including personnel) for snow operations.
 - Funding supports snow maintenance supplies and materials such as, Ice cinders, pothole patch, snow equipment & parts.
 - All work must directly be related to vehicle transportation network and must have a maintenance agreement or ROW designation.
- **\$118,000** general maintenance dollars for the entire fiscal year.

Streets Strategic Vision and Goals

To provide the most effective and safe snow operations to our community.

Enhance best practices through training, proper equipment, and staffing.

3-5 yr. goals are to meet the staffing needs of our current infrastructure and to better support the residents of Flagstaff.

Questions?

