

PUBLIC WORKS
CITY OF FLAGSTAFF

Streets Snow Operations

Presentation Objectives

- Review of Streets Snow Operations
- Streets Snowplow Equipment
- Streets Staffing
- Current Streets Snow Operations Policy
- Community Expectations and Parking Ordinance
- Post-event Operations



Streets Snowplow Fleet

- 16- 10-Wheel Snowplows
- 4- 6-Wheel Plow Trucks
- 8- Motor Graders
- 5- Front-end Loaders
- 1- Truck Mounted Snow Thrower





Streets Staffing



Current Staffing 20 of 35

1-Administrative Specialist

1- Manager

3- Supervisors (1-Vacancy)

6- Streets Operations Technician III (3 Vacancies)

7- Streets Operations Technician II (1- Vacancy)

3- Streets Operations Technician I (5-Vacancies)

0- Traffic Signal Technician II (1-Vacancy)

0- Traffic Signal Technician I (1-Vacancy)

0-Streetlight Technicians (2 Vacancies)

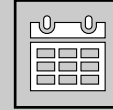
16- Operators through the snow season as of now



Snow Shifts- Equip & Staffing



Day Operations 12pm-12am



Night Operations 12am-12pm



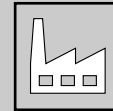
1- Snow shift supervisors



2- Snow shift supervisors



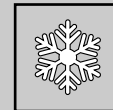
2- Operators



6- Operators



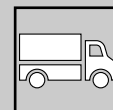
2-3- Snow temps (as available)



4-6 Snow temps (as available)



Our Goal - 4 Snowplow trucks



Our Goal 12 Snowplow trucks



Snow Shifts- Equip & Staffing



Grader/Loader Shift 8pm-8am



1- Snow shift supervisors



8- Operators



3-5 Snow temps (as available)



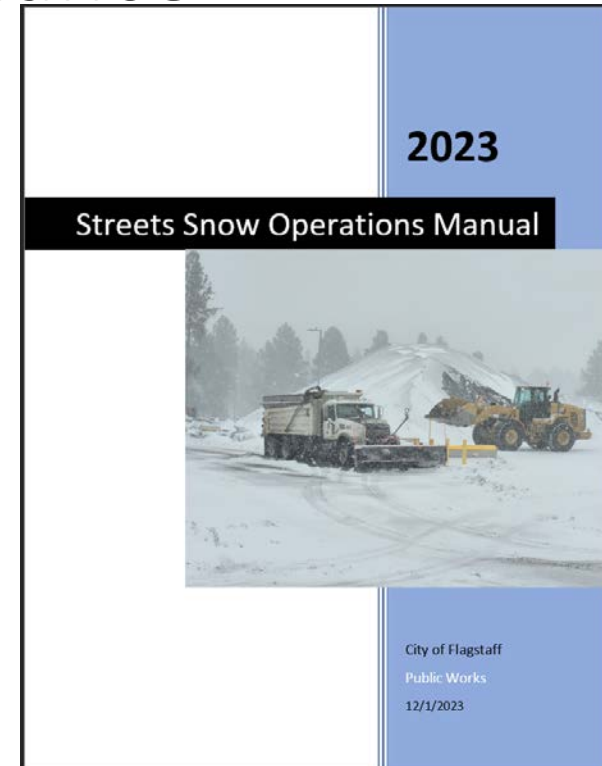
Our Goal - 9 Motor Graders
2 loaders



Streets Snow Response Policy

2023 Snow Readiness & Operations Manual

- An operational guide which is updated annually.
 - This manual is distributed to all operators and snow temps.
- The purpose of this document is track and enhance best practices while giving structure to snow operations.
- Each year, we review nationwide policies, best practices, and technology to ensure we align and provide the best public services possible





Streets- Snow Plowing Priorities



Priority Routes – Open and Passable at all times

- Main Routes and Arterials
- Major Hills
- Downtown Core
- FUSD & Mountain Line Bus Routes

Secondary Priority Routes - Residential Streets & Cul-de-sacs

Residential streets are not plowed until priority one routes are completed and more than four inches of snow has accumulated on residential roadways.

❖ Ice control for the duration of each storm event.



Streets- Snow Plowing Priorities

Residential Streets and Cul-de-sacs

Residential streets are not plowed until priority one routes are completed and more than four inches of snow has accumulated on residential roadways.

Second priorities will be completed:

within 12 hours after up to 8 inches of accumulation

within 18 hours after 8 to 12 inches of accumulation

within 36 hours after more than 12 inches of accumulation

Snow Operations Public Works Internal

Streets - Priority Arterial Routes

Priority Arterial Routes

- Truck 52
- Truck 53
- Truck 54
- Truck 55
- Truck 65
- Trucks 52 and 54

Streets - Priority Collector Routes

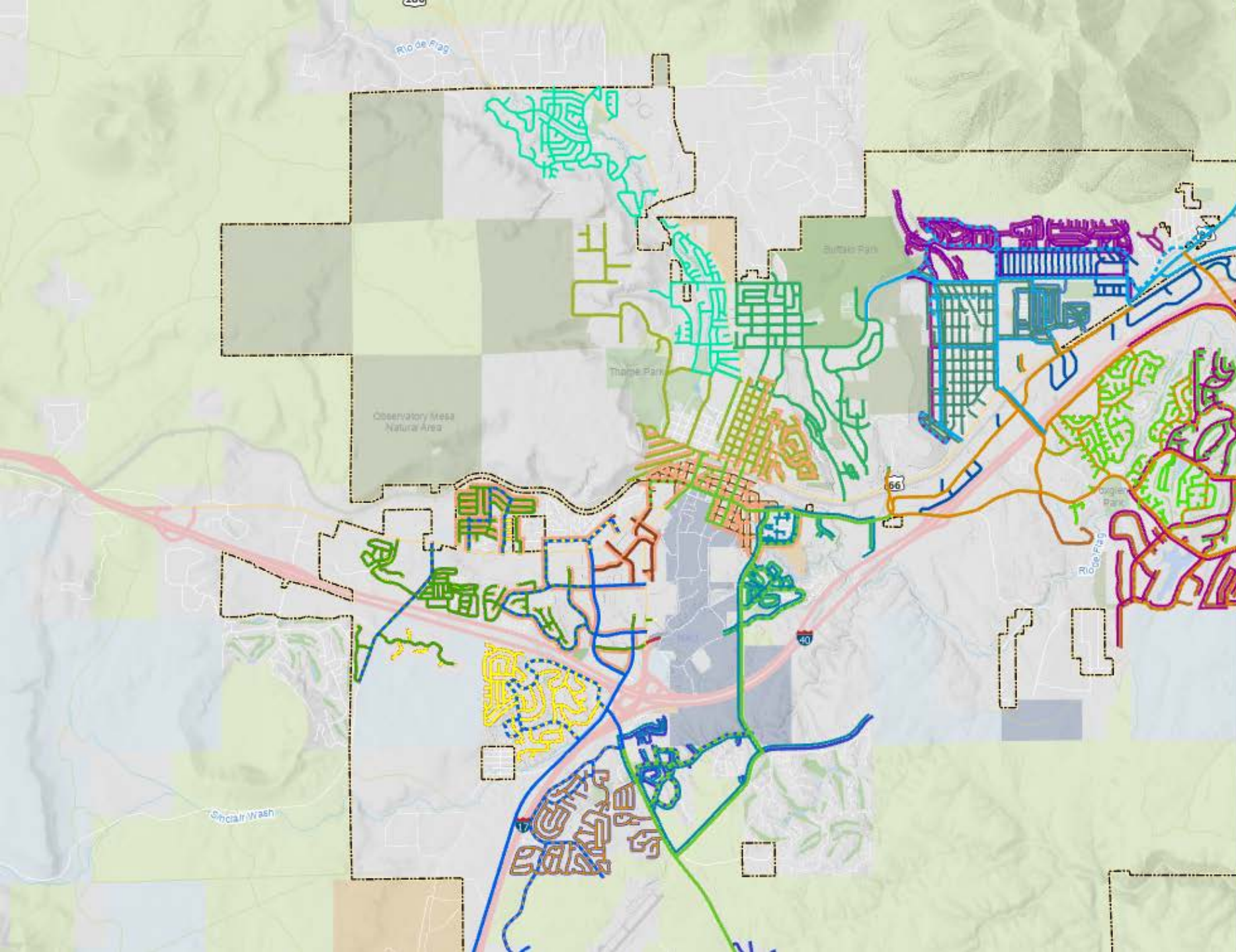
Priority Collector Routes

- Truck 52
- Truck 53
- Truck 54
- Truck 55
- Truck 65

Streets - Truck Routes

Residential Routes

- Truck 50
- Truck 51
- Truck 56
- Truck 57
- Truck 58
- Truck 61
- Truck 62
- Truck 63
- Truck 64
- Truck 66
- Truck 146
- Truck 147
- Truck 150



Snow Operations Public Works Internal

Streets - Priority Arterial Routes

Priority Arterial Routes

- Truck 52
- Truck 53
- Truck 54
- Truck 55
- Truck 65
- Trucks 52 and 54

Streets - Priority Collector Routes

Priority Collector Routes

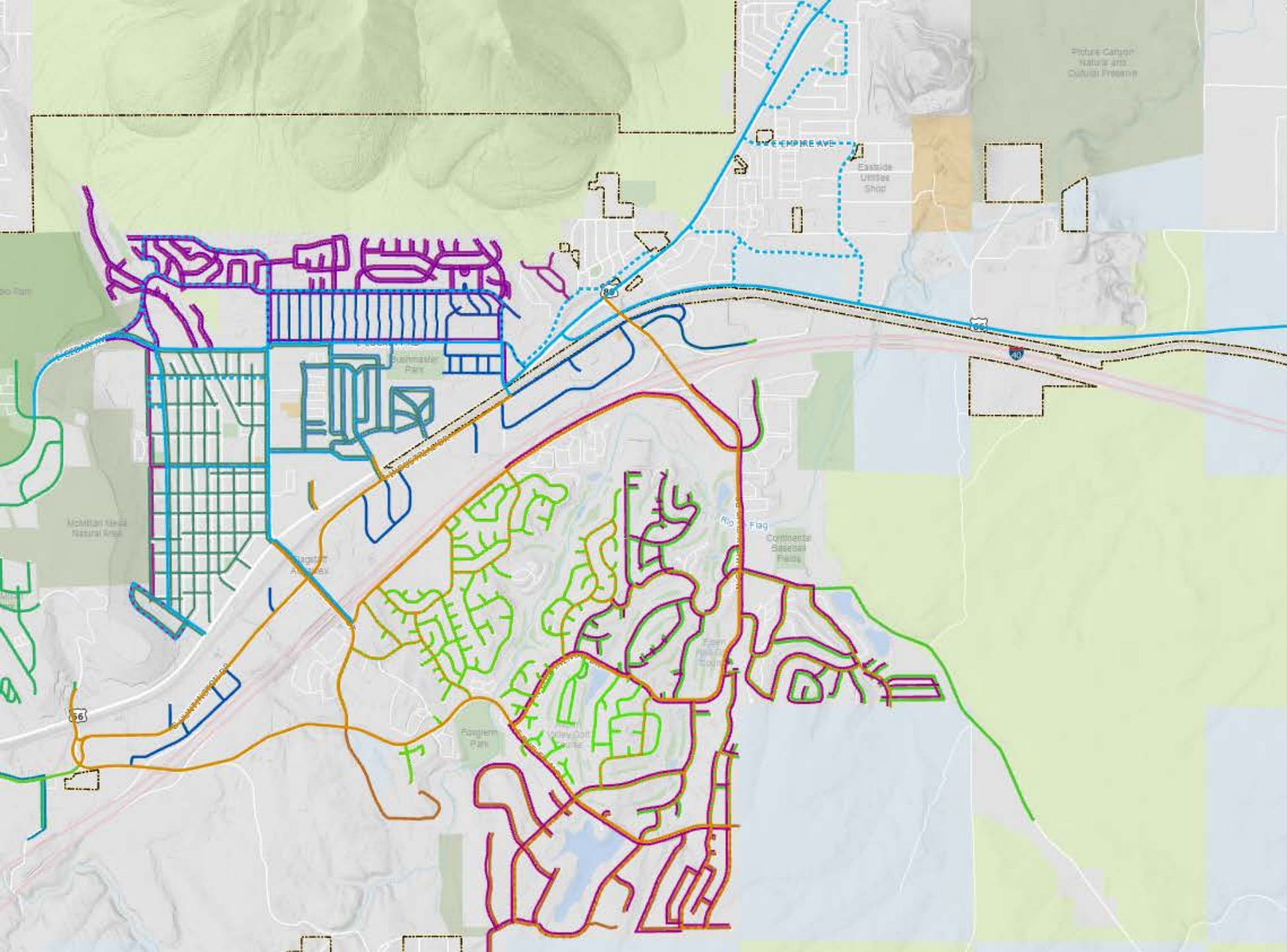
- Truck 52
- Truck 53
- Truck 54
- Truck 55
- Truck 65

Streets - Truck Routes

Residential Routes

- Truck 50
- Truck 51
- Truck 56
- Truck 57
- Truck 58
- Truck 61
- Truck 62
- Truck 63
- Truck 64
- Truck 66
- Truck 146
- Truck 147
- Truck 150
- Truck 152

Streets - Grader Routes





Streets Responsibilities



Event Responsibilities

- 24hr snowplow coverage until all roads are plowed.
- Streets plows 700+ lane miles of roadway.
 - Equates to 2600 miles traveled to plow roads 1 time includes emergency lanes, shoulders, bike lanes, and turn lanes
- Apply ice cinders
- Maintain 48 traffic signals
- Coordinate with partner agencies on snow ops.
- Work with Fleet to ensure broken equipment is repaired asap.



Day Time Snow Deviations

- Community Expectations vs. Policy
 - Community calls for service that led to deviation of snow routes
 - Day time traffic, accidents, and parking conflicts create route disruptions.
 - Severe weather leads to suspended operations for operator safety.
- Day time Emergencies
 - Coordination with Fire and Police on roadway/ROW issues.
 - Signalized intersections/sign issues

Post Event

- Snow hauling operations
 - Downtown Parking
 - Main arterial roads
 - Cul-de-sacs
- Intersection clean up and push back
- Damaged Sign repairs
- Prolonged ice control and trouble spots
- Ice cinder sweeping
- Roadway damages and potholes



Streets Strategic Vision and Goals

To provide the most effective and safe snow operations to our community.

Enhance best practices through training, proper equipment, and staffing.

3-5 yr. goals are to meet the staffing needs of our current infrastructure and to better support the residents of Flagstaff.

Questions?