

MDN ARCHITECTURE LLC. RESERVES THE COMMON LAW COPYRIGHT AND OTHER PROPERTY RIGHTS IN THESE PLANS. THE PLANS AND DESIGNS SHALL NOT BE REPRODUCED, COPIED, OR MODIFIED IN ANY FORM OR MANNER WHATSOEVER, NEITHER SHALL THEY BE ASSIGNED TO ANY THIRD PARTY WITHOUT FIRST OBTAINING WRITTEN PERMISSION AND CONSENT OF MDN ARCHITECTURE LLC. ©

**MDN**  
ARCHITECTURE

2312 W. MANDALAY LN.  
PHOENIX, AZ 85023  
602-228-4998



**SITE PLAN  
REVIEW**  
PZ-20-00212-01

**PUTTTEK FLAGSTAFF  
PARK 66 PROPERTIES, LLC**  
3126 E ROUTE 66  
FLAGSTAFF, ARIZONA 86004

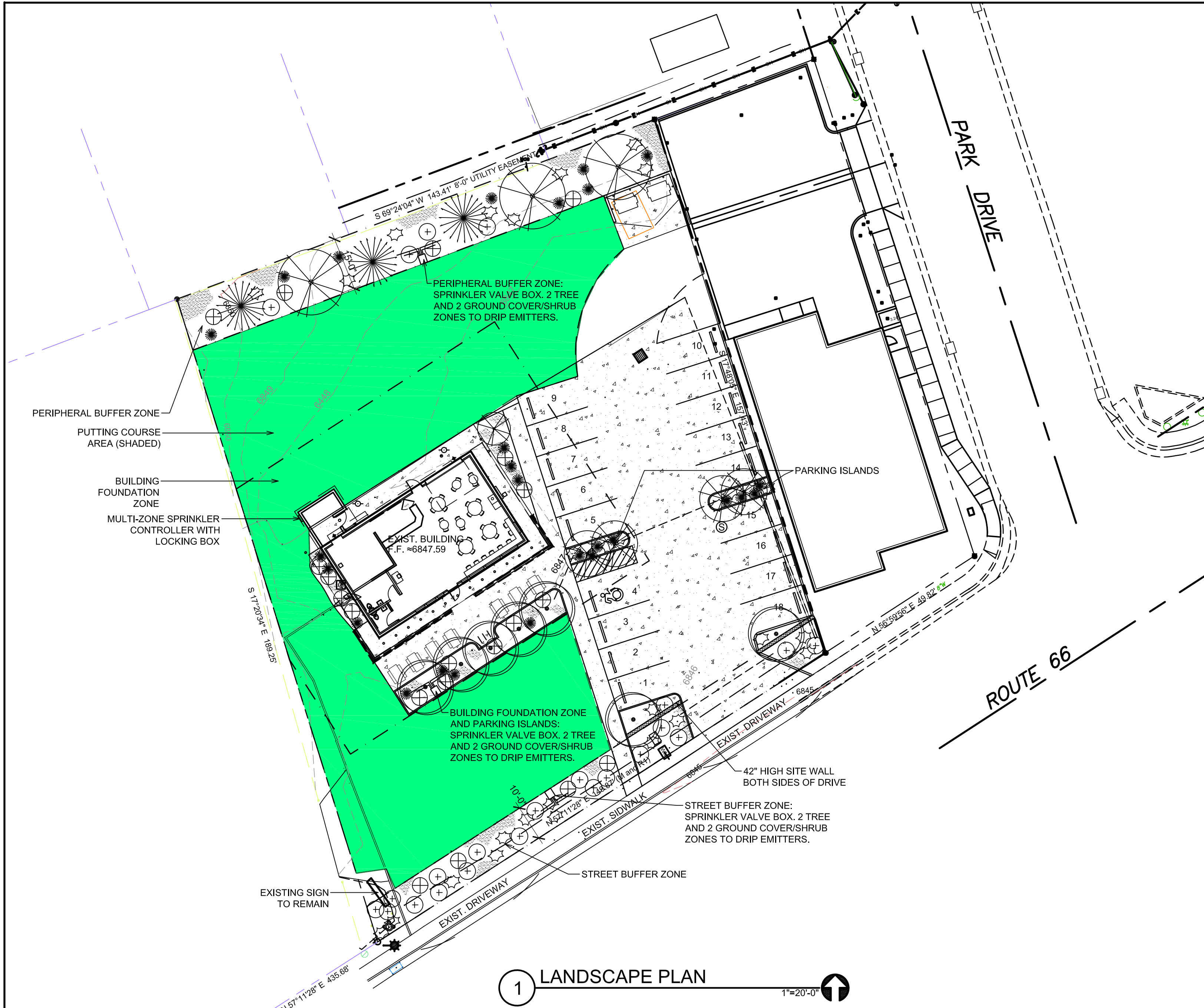
REVISIONS

JOB NUMBER  
210302

DATE  
7/19/2022

SHEET NUMBER

**11.4**



**1 LANDSCAPE PLAN**  
1"=20'-0"

**LANDSCAPE CALCULATIONS:**  
**BUILDING FOUNDATION:** 1 TREE, 2 SHRUBS, AND 2 GROUND COVERS FOR EVERY 25 LINEAR FEET OF BUILDING, PLANTED WITHIN 25' OF BUILDING. BUILDING PERIMETER IS 160'  
 $160/25 = 6.4 = 6$  TREES, 12 SHRUBS, 12 GROUND COVERS REQUIRED.  
**STREET BUFFER:** 2 TREES, 2 SHRUBS, AND 2 GROUND COVERS PER 25 LINEAL FEET. THE STREET BUFFER OVERLAPS A 10'-0" UTILITY EASEMENT, THEREFOR NO TREES, SHRUBS AND GROUND COVER ONLY.  
 STREET FRONTAGE IS 150'  
 $150/25 = 6$ . 12 SHRUBS AND 12 GROUND COVERS.  
**PERIPHERAL BUFFER:** NORTH SIDE OF PROPERTY, 15'-0" BUFFER WITH L.S. BETWEEN THE PROPERTY AND RESIDENTIAL ZONE. 1 TREE, 2 SHRUBS AND 2 GROUND COVERS REQUIRED PER 25 LINEAL FEET.  
 BUFFER ZONE IS 143'  
 $143/25 = 5.72$ . 6 TREES, 12 SHRUBS, AND 12 GROUND COVERS.  
**PARKING ISLANDS:** 1 PER EVERY 8 PARKING SPOTS. L.S. REQUIREMENTS, 2 TREES PER 8 SPACES, 2 SHRUBS PER TREE AND 2 GROUND COVER PER TREE.

**LANDSCAPE KEY**

- TREES**
- QUAKING ASPEN - 4" CALIPER
  - COLORADO BLUE SPRUCE - 6' TALL
  - PURPLE LEAF PLUM - 4" CALIPER
- SHRUBS - 5 GALLON**
- BUSH CINQUEFOIL
  - POTENTILLA
- GROUND COVER - 5 GALLON**
- SPRING CINQUEFOIL
  - HONEYSUCKLE
  - DECOMPOSED GRANITE