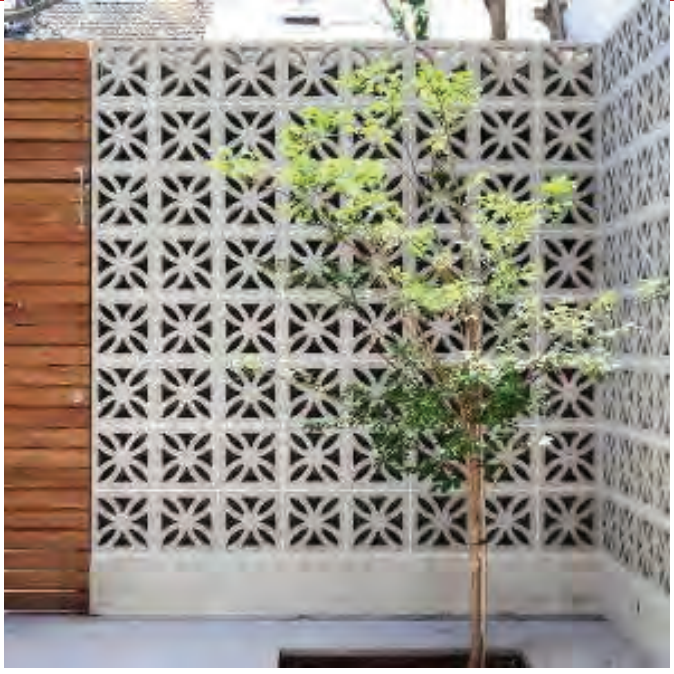


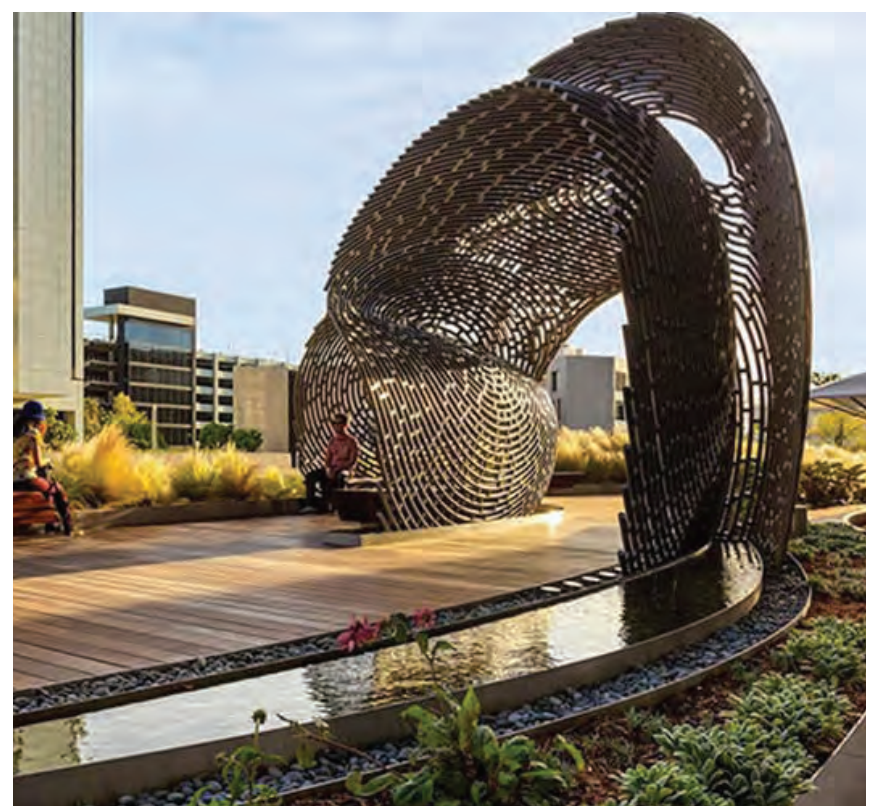
WALLS, FENCES & ENTRYWAYS



ART & SCULPTURES


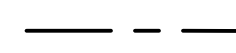




Image 29



PLOTTED: Feb 13, 2023--6:21pm

LEGEND

-  OVERALL PROJECT BOUNDARY
-  FLOWLINE
-  DRAINAGE ARROW
-  ULTIMATE STORMWATER CONCENTRATION POINT

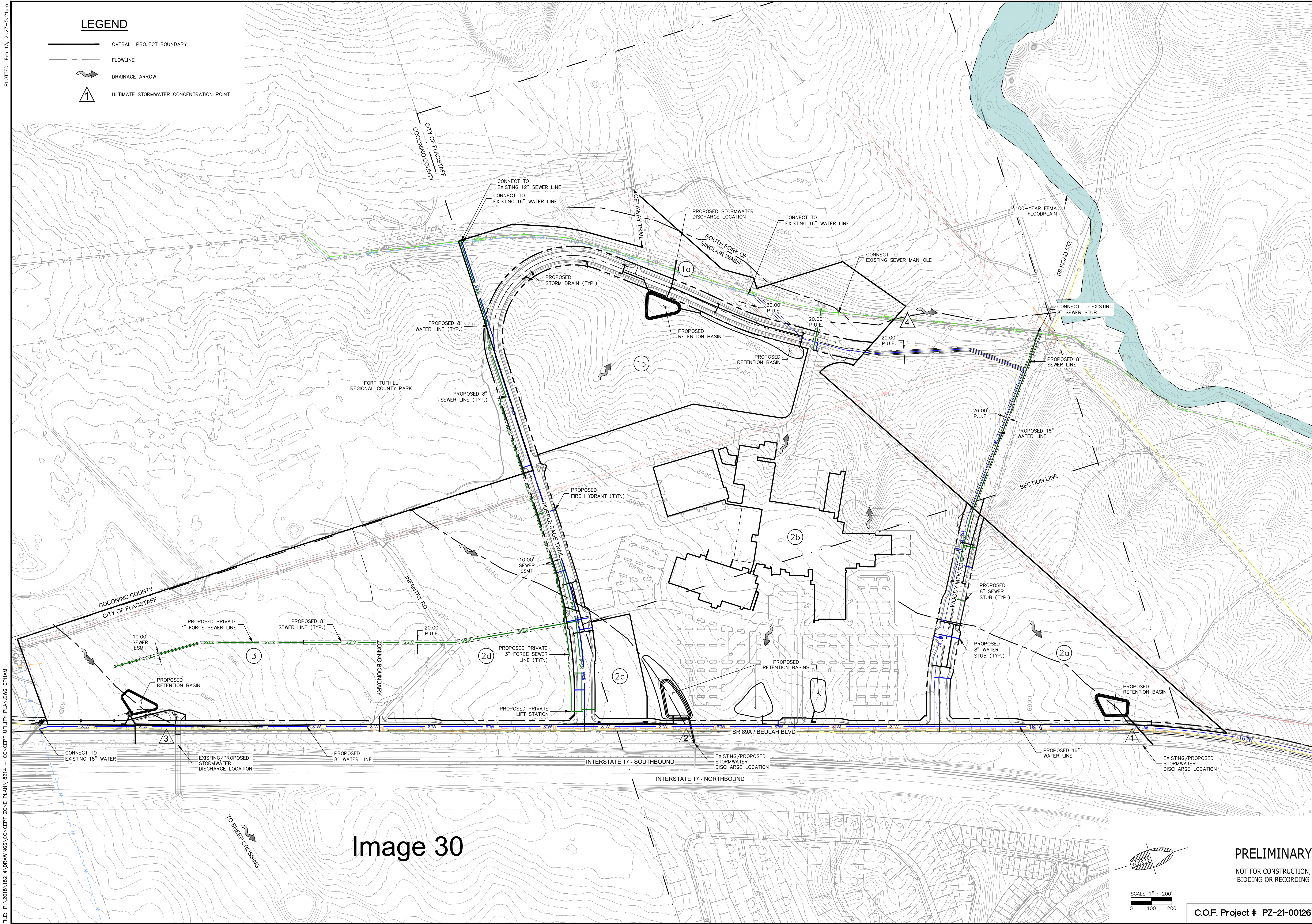
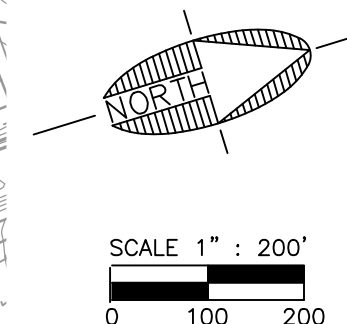



Image 30



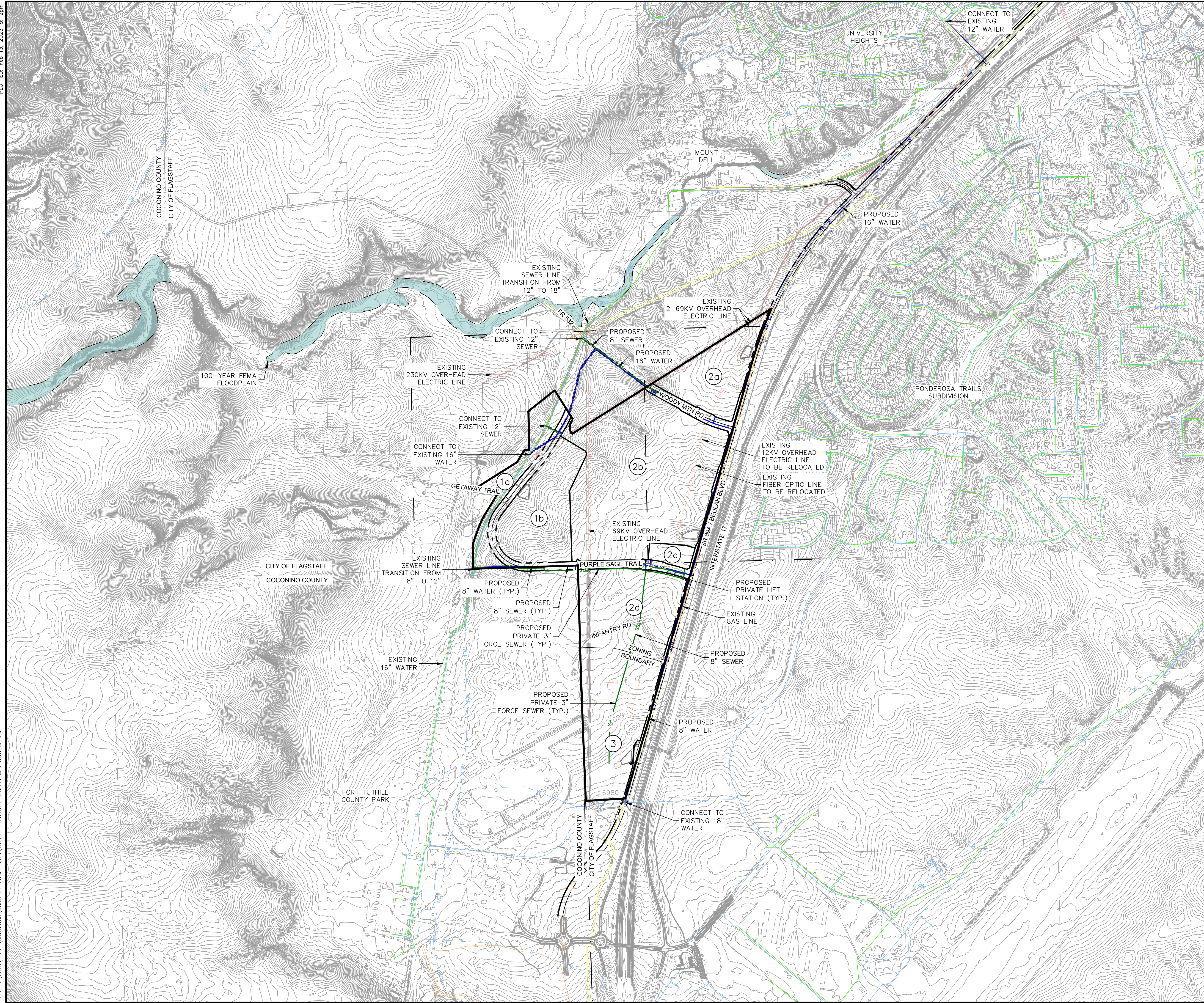
PRELIMINARY
 NOT FOR CONSTRUCTION,
 BIDDING OR RECORDING

C.O.F. Project # PZ-21-00126

 Shephard Wesnitzer, Inc.		FLAGSTAFF ARIZONA	
JOB NO:	18214	VILLAGE:	NAH HEALTH VILLAGE
DATE:	FEB 23	CONCEPT ZONING MAP	
SCALE:	AS SHOWN	CONCEPTUAL UTILITY & DRAINAGE PLAN	
DRAWN:	CNP		
DESIGN:	SCI		
CHECKED:	GEC		
110 W. Dole Avenue Flagstaff, AZ 86001 928.773.0354 928.774.8934 fax www.swi.az.com			
ARIZONA 811 Arizona Blue Stakes, Inc.			
Call at least two full working days before you begin excavation. 800-84-1111 or 1-800-514-1111 (AZ-5148)			
NO.	DESCRIPTION	DATE	BY
SHT NO.	7	OF	12

PLOTTED: Feb 13, 2023--5:12pm

FILE: P:\2018\18214\DRAWINGS\CONCEPT_ZONE_PLAN\18214 - OVERALL UTILITY MAP.DWG CPHAM



LEGEND

- SS --- SS --- EXISTING SEWER
- W --- W --- EXISTING WATER
- GAS --- GAS --- EXISTING GAS
- OHE --- EXISTING OVERHEAD ELECTRIC
- TL --- EXISTING TELEPHONE
- S --- PROPOSED SEWER
- W --- PROPOSED WATER
- --- PROPOSED STORMDRAIN
- --- OVERALL PROJECT BOUNDARY
- --- FEMA FLOODPLAIN LIMITS

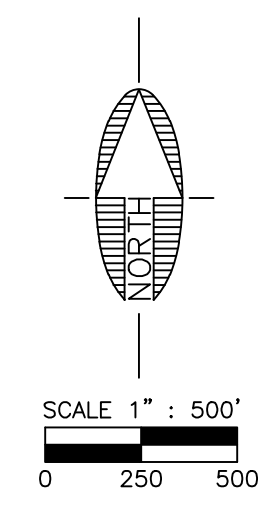



Image 31

PRELIMINARY
NOT FOR CONSTRUCTION,
BIDDING OR RECORDING

C.O.F. Project # PZ-21-00126

JOB NO: 18214		DATE: FEB 23		SCALE: AS SHOWN		DRAWN: HAS		DESIGN: CNP		CHECKED: GEC	
110 W. Dole Avenue Flagstaff, AZ 86001 928.774.0354 928.774.8934 fax www.swi.az.com											
 Shephard Wesnitzer, Inc.											
REVISIONS	NO.	DESCRIPTION	DATE	BY							
					DRAWING NO. CP03						
					SHT NO. 4 OF 12						

FLAGSTAFF ARIZONA
NAH HEALTH VILLAGE
OVERALL UTILITY MAP

PLOTTED: Mar 01, 2023 - 3:02pm

FILE: P:\2021\21045\DRAWINGS\PLATS\PRELIMINARY BLOCK PLAT\21045 - PHASING PLAN - 1 - SPECIFIC PLAN.DWG - ERIKSSON

LEGEND

	ROW
	SITE BOUNDARY
	PROPOSED LOT LINE
	EX. INTERMEDIATE CONTOUR
	EX. INDEX CONTOUR
	PROPOSED INFRASTRUCTURE
	EXISTING INFRASTRUCTURE
	PHASE 1 BLOCKS/ LAND USE AREAS

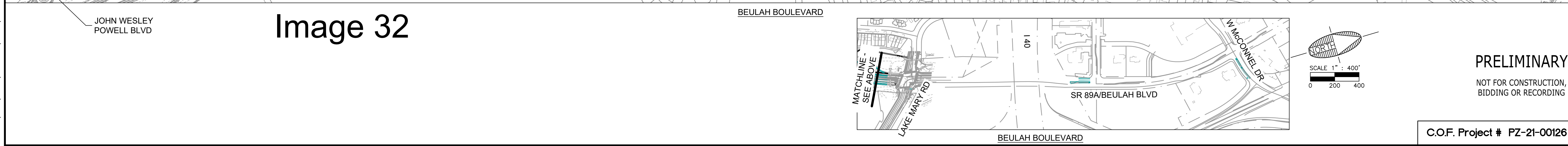
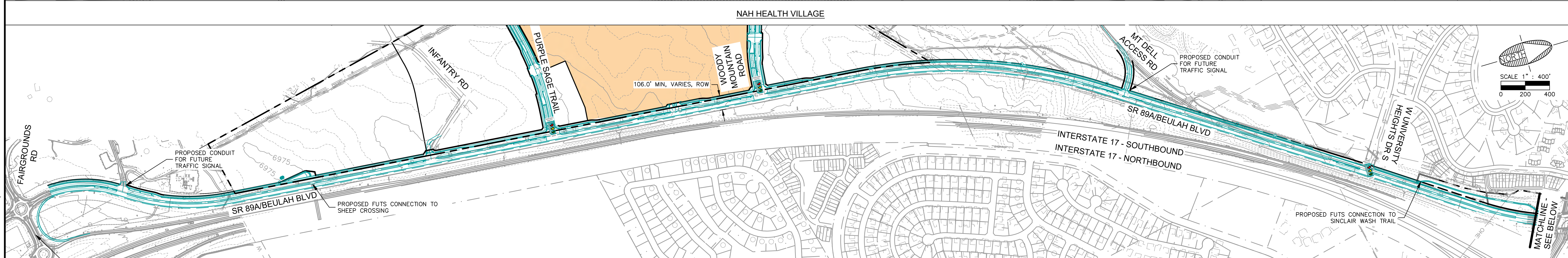
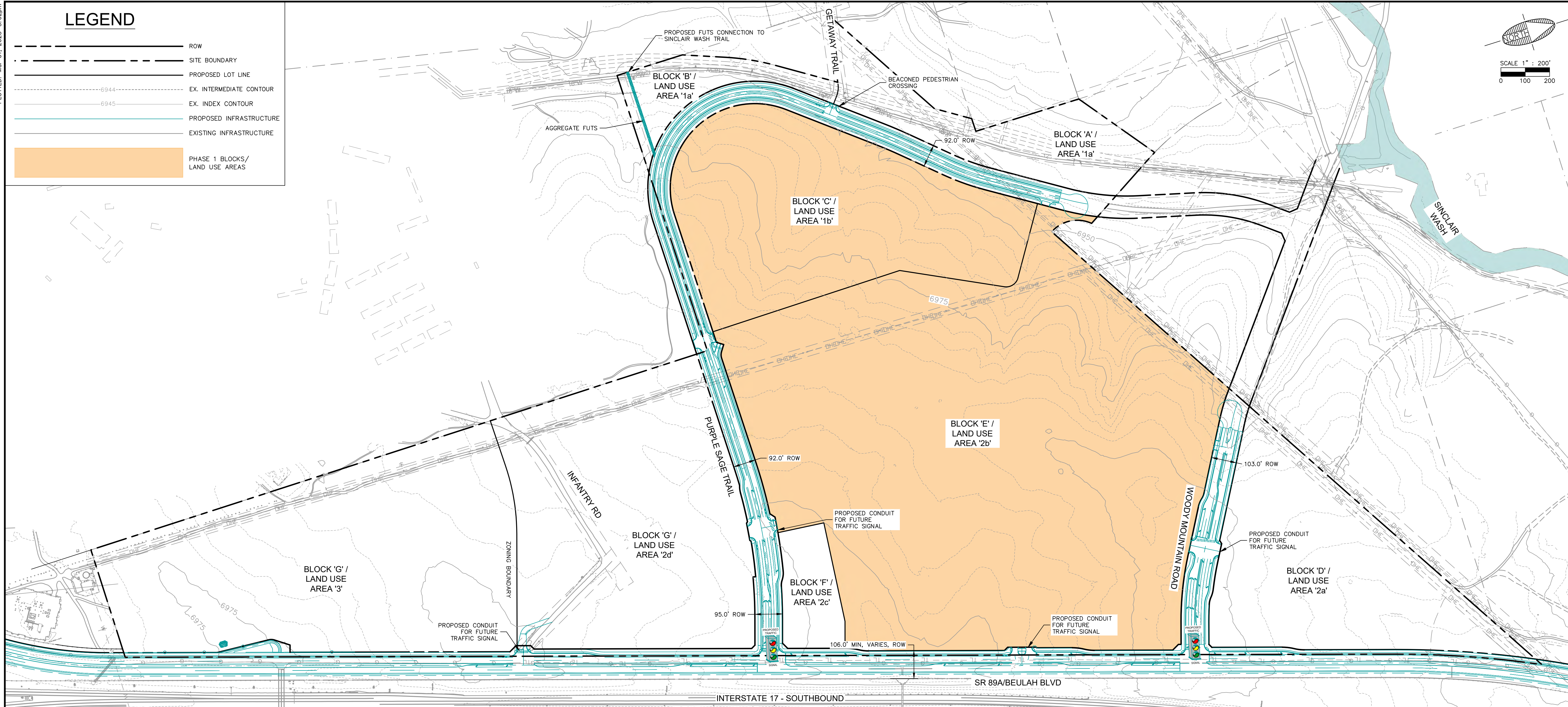
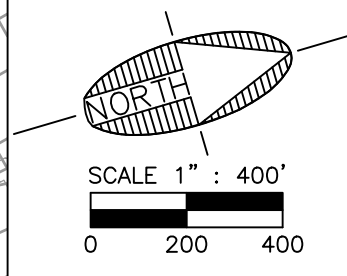
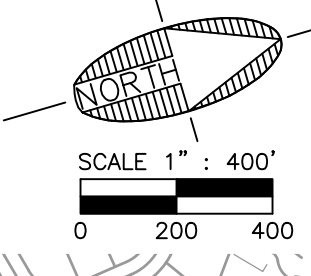
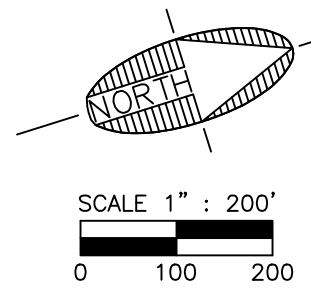


Image 32

PRELIMINARY

NOT FOR CONSTRUCTION,
BIDDING OR RECORDING

C.O.F. Project # PZ-21-00126



FLAGSTAFF ARIZONA
NAH HEALTH VILLAGE
INFRASURFACE PHASING PLAN PHASE 1 - ROADWAY & TRAFFIC CONTROL
JOB NO: 21045
DATE: MAR 23
SCALE: AS SHOWN
DRAWN: JEE
DESIGN: CNP
CHECKED: GEC
110 W. Dole Avenue Flagstaff, AZ 86001 928.774.0354 928.774.8934 fax www.swi.com
SWI Shephard Wesnitzer, Inc.
BY: _____
DATE: _____
REVISIONS
NO. DESCRIPTION
1. Call out at least two full working days before you begin excavation.
ARIZONA 801 Arizona Blue Stakes, Inc. DOB 8-1-11 or 1-800-514-1111 (822-5348)
DRAWING NO. PH1.1
SHT NO. OF 1 3

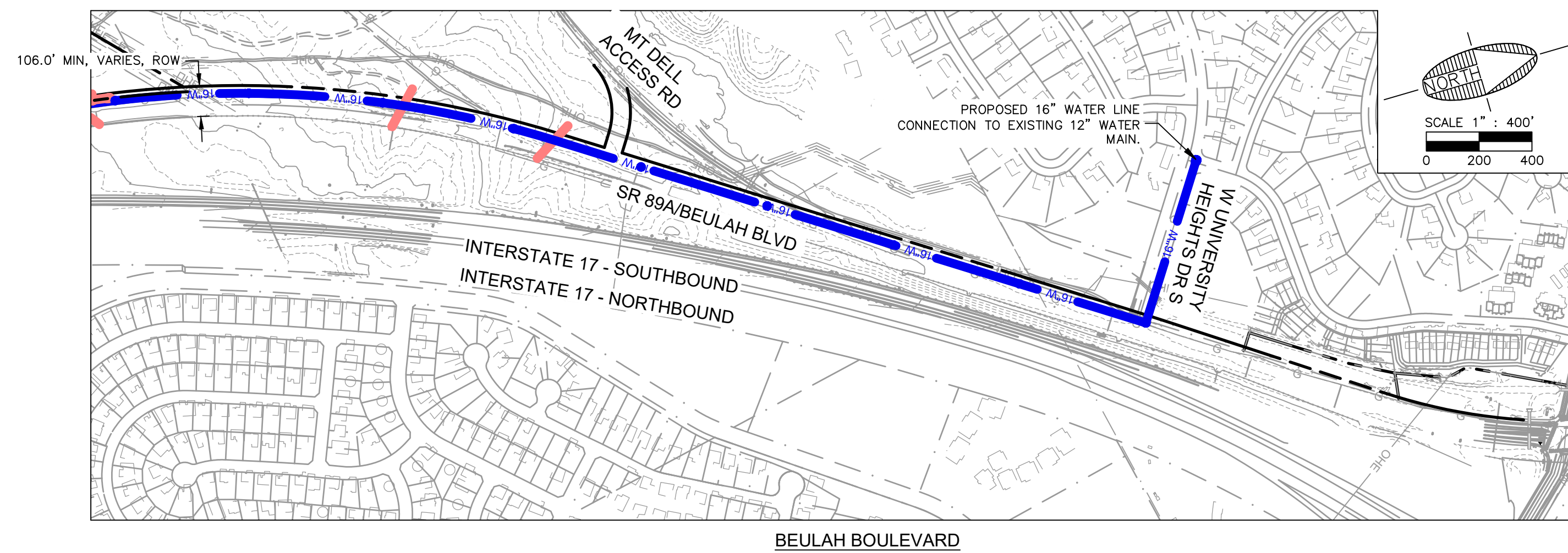
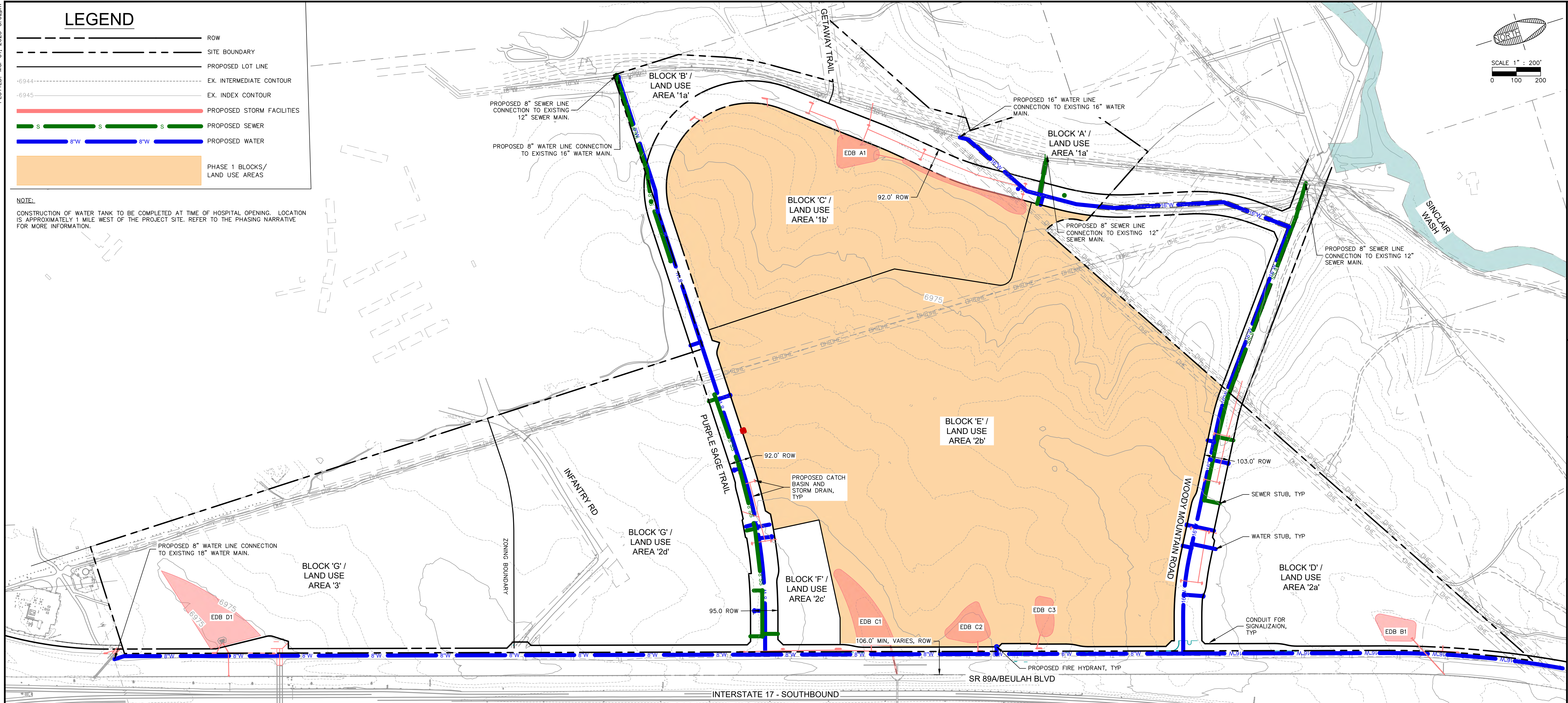
PLOTTED: Mar 01, 2023 - 3:02pm

FILE: P:\2021\21045\DRAWINGS\PLATS\PRELIMINARY BLOCK PLAT\21045 - PHASING PLAN - 1 - SPECIFIC PLAN.DWG -ERIKSSON

LEGEND

- ROW
- SITE BOUNDARY
- PROPOSED LOT LINE
- EX. INTERMEDIATE CONTOUR
- EX. INDEX CONTOUR
- PROPOSED STORM FACILITIES
- PROPOSED SEWER
- PROPOSED WATER
- PHASE 1 BLOCKS/ LAND USE AREAS

NOTE:
CONSTRUCTION OF WATER TANK TO BE COMPLETED AT TIME OF HOSPITAL OPENING. LOCATION IS APPROXIMATELY 1 MILE WEST OF THE PROJECT SITE. REFER TO THE PHASING NARRATIVE FOR MORE INFORMATION.



FLAGSTAFF
ARIZONA

NAH HEALTH VILLAGE

**INFRASTRUCTURE PHASING PLAN
PHASE 1 - STORMWATER & UTILITIES**

JOB NO: 21045
DATE: MAR 23
SCALE: AS SHOWN
DRAWN: JEE
DESIGN: CNP
CHECKED: GEC

110 W. Dole Avenue
Flagstaff, AZ 86001
928.774.8934
928.774.8934 fax
www.swi.az.com

SWI
Shephard Wesnitzer, Inc.

NO.	REVISIONS	DESCRIPTION	DATE	BY

Call at least two full working days before you begin excavation.

ARIZONA 811
Arizona Blue Stakes, Inc. (928-5348)
Dial 8-1-1 or 1-800-514-1111

PRELIMINARY
NOT FOR CONSTRUCTION,
BIDDING OR RECORDING

DRAWING NO. **PH1.2**

SHT NO. 2 OF 3














C.O.F. Project # PZ-21-00126

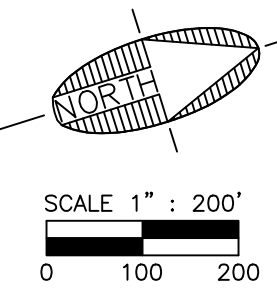
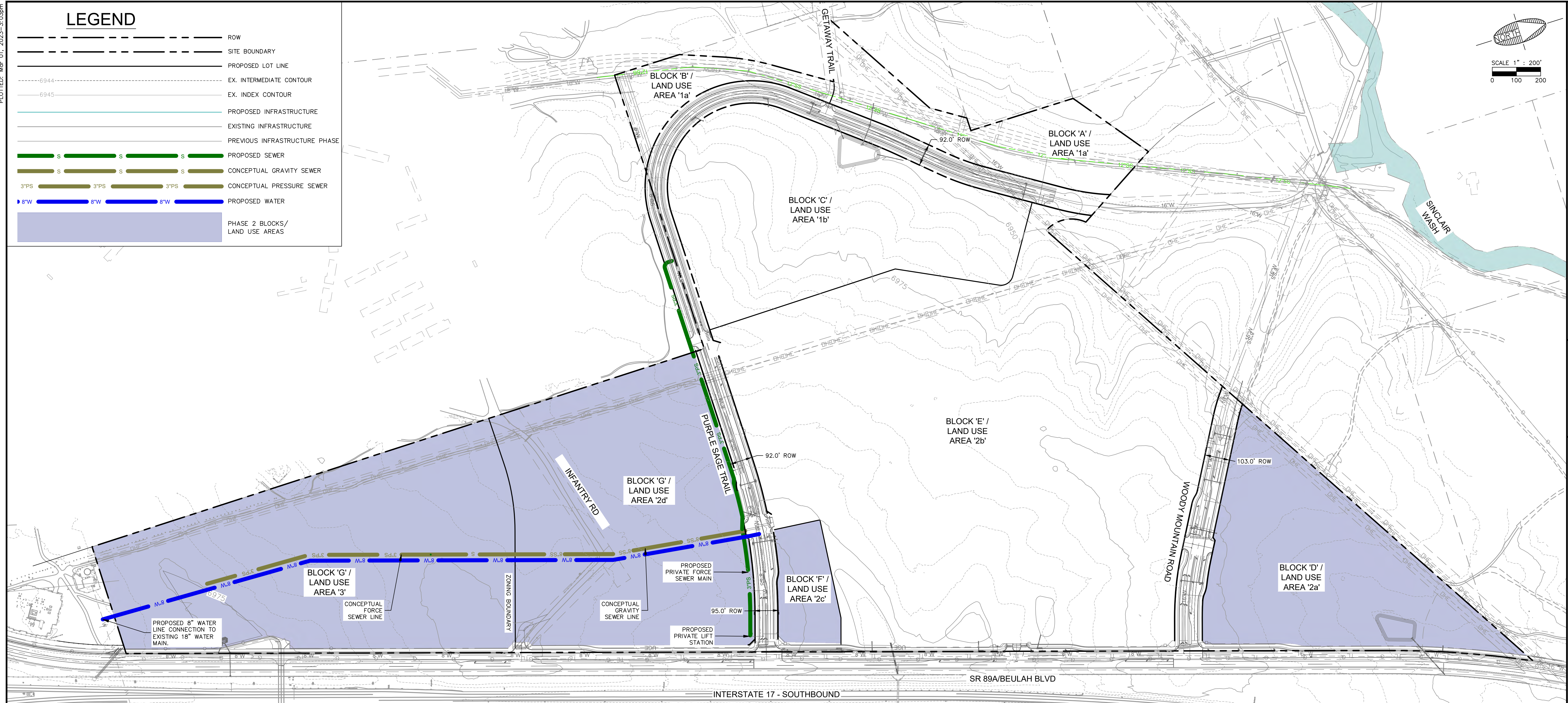
Image 33

PLOTTED: Mar 01, 2023 - 3:03pm

FILE: P:\2021\21045\DRAWINGS\PLATS\PRELIMINARY BLOCK PLAT\21045 - PHASING PLAN - 2 - SPECIFIC PLAN.DWG BERKSSON

LEGEND

-  ROW
-  SITE BOUNDARY
-  PROPOSED LOT LINE
-  EX. INTERMEDIATE CONTOUR
-  EX. INDEX CONTOUR
-  PROPOSED INFRASTRUCTURE
-  EXISTING INFRASTRUCTURE
-  PREVIOUS INFRASTRUCTURE PHASE
-  PROPOSED SEWER
-  CONCEPTUAL GRAVITY SEWER
-  3"PS CONCEPTUAL PRESSURE SEWER
-  8" W PROPOSED WATER
-  PHASE 2 BLOCKS/
LAND USE AREAS



FLAGSTAFF
ARIZONA

NAH HEALTH VILLAGE

**INFRASTRUCTURE PHASING PLAN
PHASE 2**

TRAFFIC CONTROL, STORMWATER & UTILITIES

JOB NO: 21045
DATE: MAR 23
SCALE: AS SHOWN
DRAWN: JEE
DESIGN: CNP
CHECKED: GEC

110 W. Dole Avenue
Flagstaff, AZ 86001
928.774.0354
928.774.8934 fax
www.swi.az.com



NO.	DESCRIPTION	DATE	BY

Call at least two full working days before you begin excavation.

ARIZONA 811
Arizona Blue Stakes, Inc.
808 84-1111 or 1-800-514-1111 (782-5348)

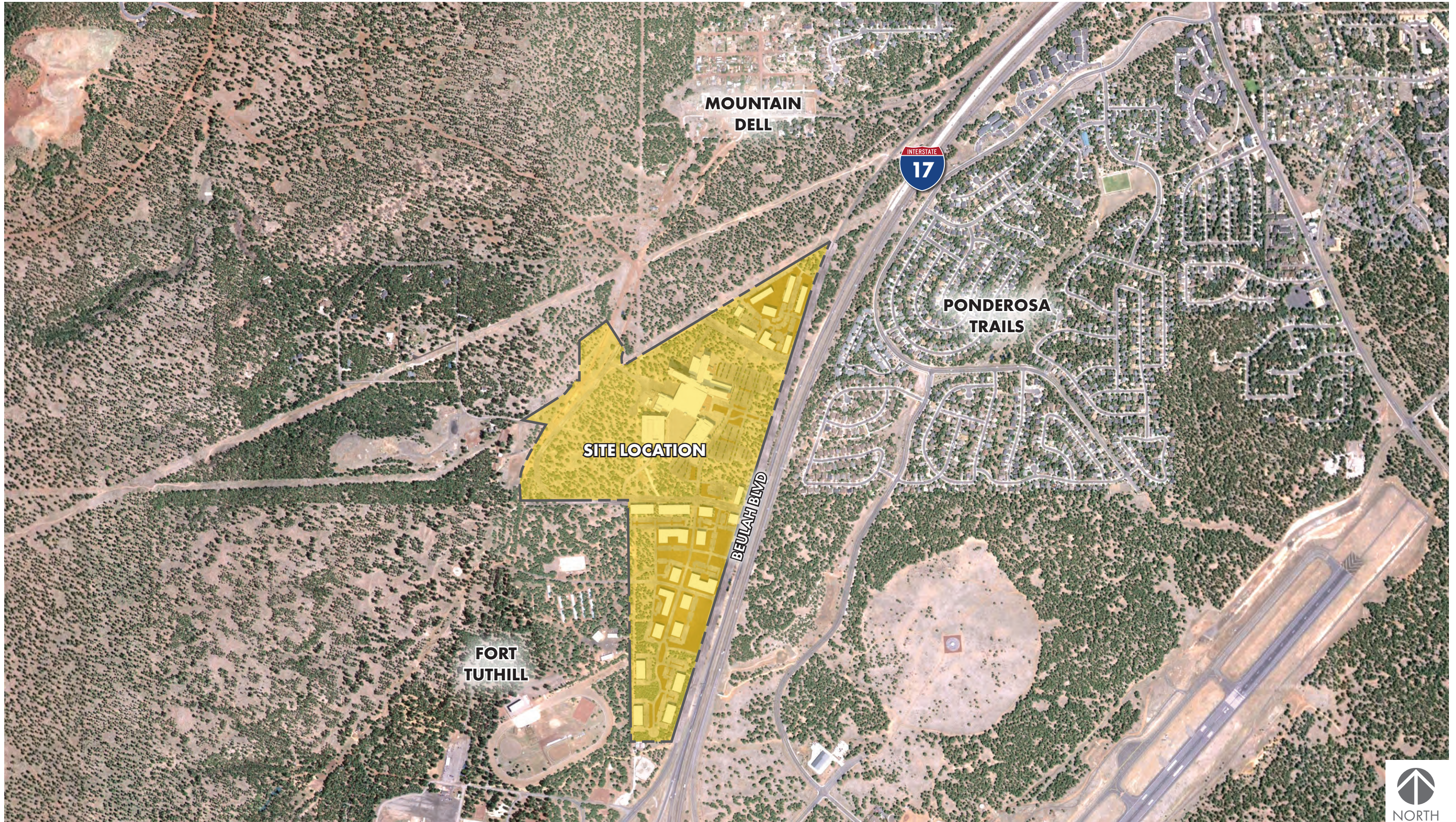
PRELIMINARY
NOT FOR CONSTRUCTION,
BIDDING OR RECORDING

DRAWING NO.
PH02

SHT NO. OF
3 OF 3

C.O.F. Project # PZ-21-00126

Image 34



PROJECT LOCATION MAP



PROPOSED CONDITION- 3D DIGITAL MODEL

3D DIGITAL MODEL BASED ON CURRENT CONCEPT PLAN AND IS SUBJECT TO CHANGE.

3D DIGITAL MODEL NOTES

1) 3D MODEL ARCHITECTURE

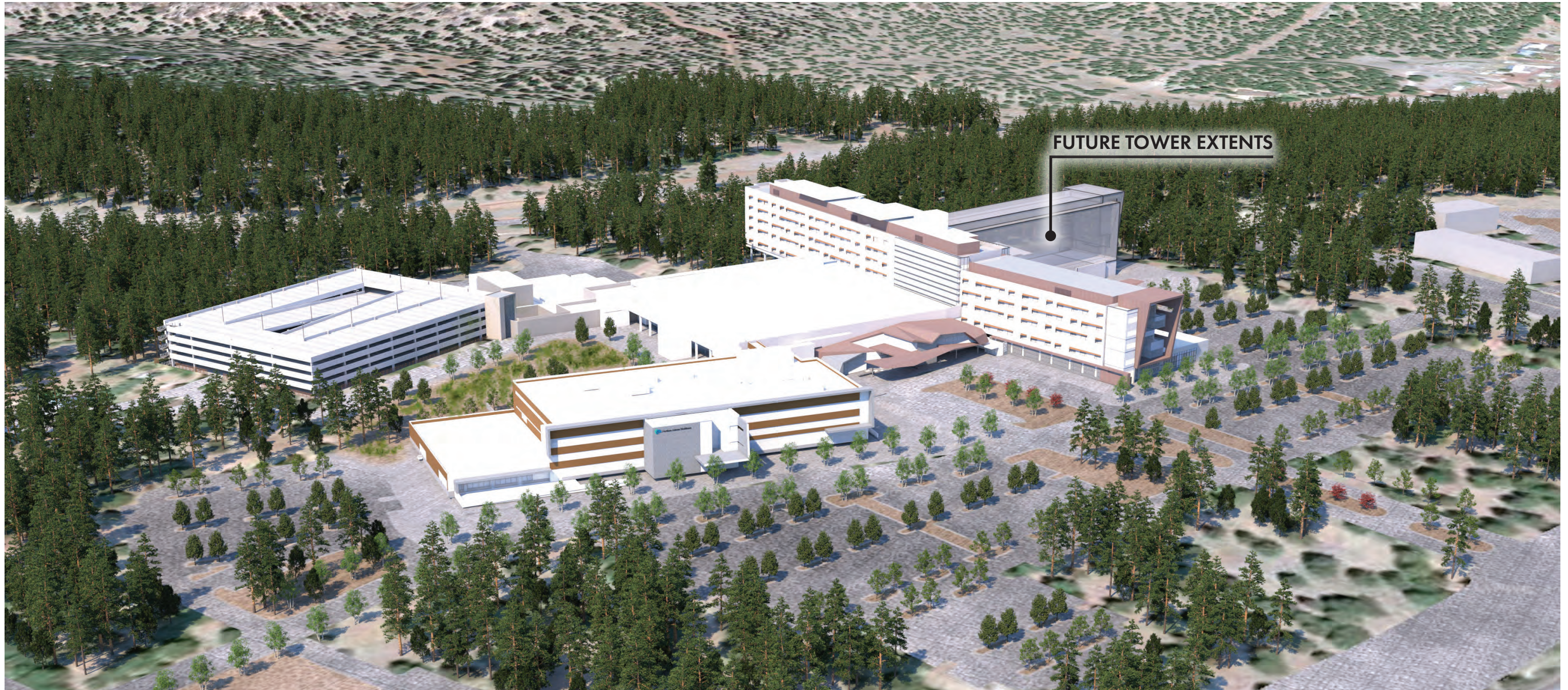
- ALL MASSING REPRESENTED IN THIS EXHIBIT IS CONCEPTUAL AND IS MEANT TO DEPICT ALLOWABLE BUILDING HEIGHTS FOR EACH INDIVIDUAL PARCEL. ANY DESIGN FOR BUILDINGS ON THESE PARCELS WILL BE SUBMITTED TO THE CITY OF FLAGSTAFF FOR REVIEW UNDER SEPARATE SUBMITTALS.

2) 3D MODEL TOPOGRAPHY

- PROJECT AREA IS BASED ON CURRENT CIVIL DESIGN.
 - ADJACENT AREA IS BASED ON USGS DATA.

3) 3D MODEL VEGETATION

- EVERGREEN TREES SHOWN AT A MAX HEIGHT OF 70' WITH A RANGE FROM 50'-70' FOR TREE HEIGHT



PROPOSED CONDITION- 3D DIGITAL MODEL - HOSPITAL ZOOM-IN

3D DIGITAL MODEL BASED ON CURRENT CONCEPT PLAN AND IS SUBJECT TO CHANGE.

3D DIGITAL MODEL NOTES

1) 3D MODEL ARCHITECTURE

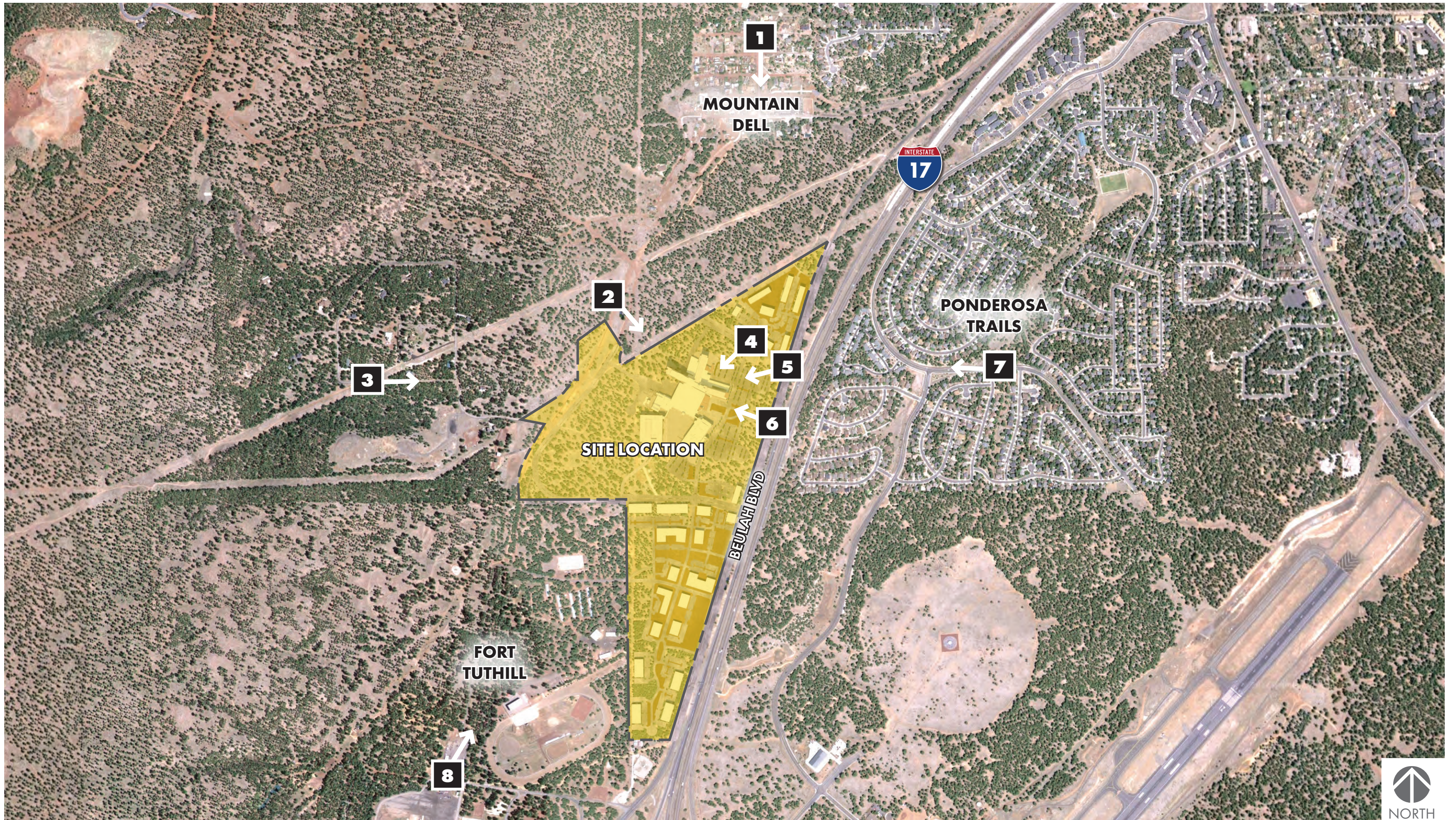
- ALL MASSING REPRESENTED IN THIS EXHIBIT IS CONCEPTUAL AND IS MEANT TO DEPICT ALLOWABLE BUILDING HEIGHTS FOR EACH INDIVIDUAL PARCEL. ANY DESIGN FOR BUILDINGS ON THESE PARCELS WILL BE SUBMITTED TO THE CITY OF FLAGSTAFF FOR REVIEW UNDER SEPARATE SUBMITTALS.

2) 3D MODEL TOPOGRAPHY

- PROJECT AREA IS BASED ON CURRENT CIVIL DESIGN.
 - ADJACENT AREA IS BASED ON USGS DATA.

3) 3D MODEL VEGETATION

- EVERGREEN TREES SHOWN AT A MAX HEIGHT OF 70' WITH A RANGE FROM 50'-70' FOR TREE HEIGHT

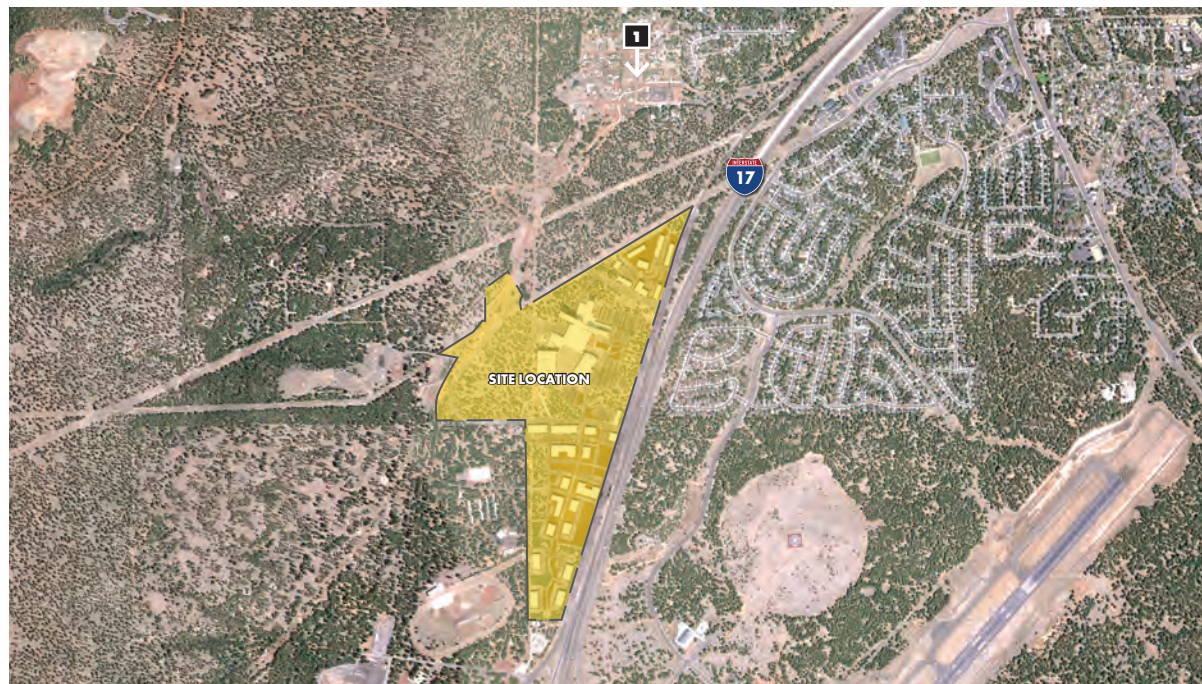


CAMERA LOCATION MAP



EXISTING CONDITION - VIEW FROM MOUNTAIN DELL

PHOTO 8/23/2022



VIEW LOCATION KEY MAP



PROPOSED HOSPITAL LOCATION
(NOT VISIBLE FROM THIS VANTAGE POINT)

PROPOSED CONDITION - VIEW FROM MOUNTAIN DELL

- 3D DIGITAL MODEL
- CAMERA HEIGHT APPROXIMATES AN AVERAGE PERSON'S HEIGHT



EXISTING CONDITION - VIEW FROM SINCLAIR WASH FUTS

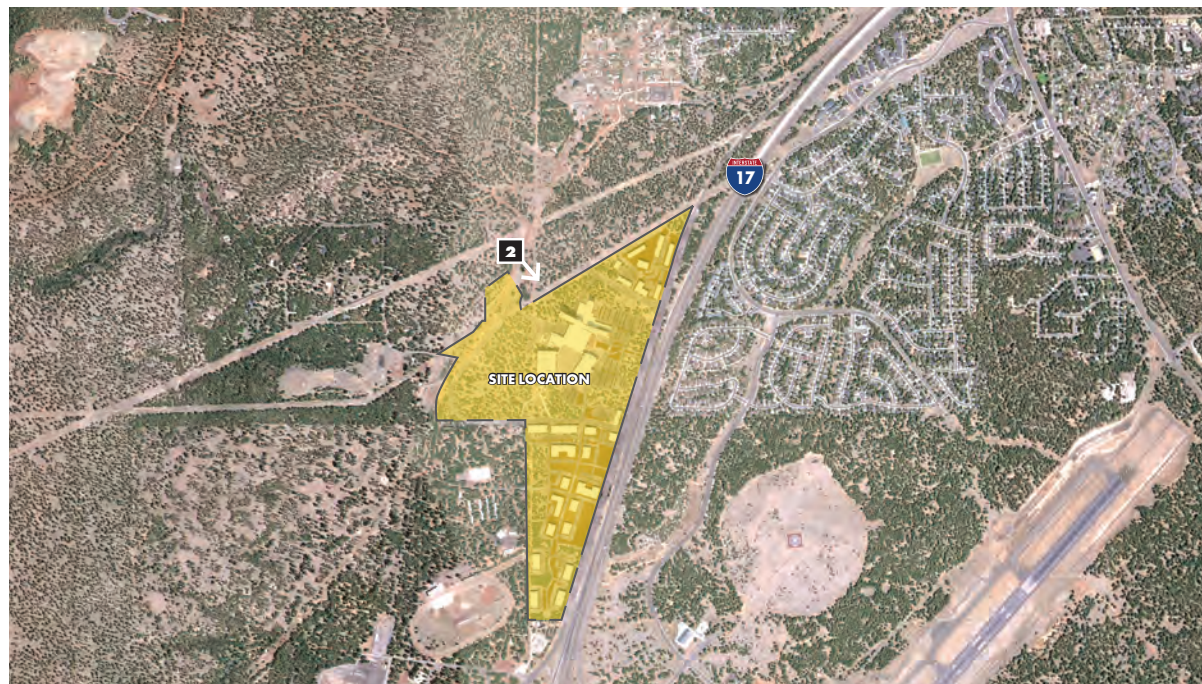
PHOTO 8/23/2022



PROPOSED HOSPITAL LOCATION

PROPOSED CONDITION - VIEW FROM SINCLAIR WASH FUTS

- 3D DIGITAL MODEL
- CAMERA HEIGHT APPROXIMATES AN AVERAGE PERSON'S HEIGHT

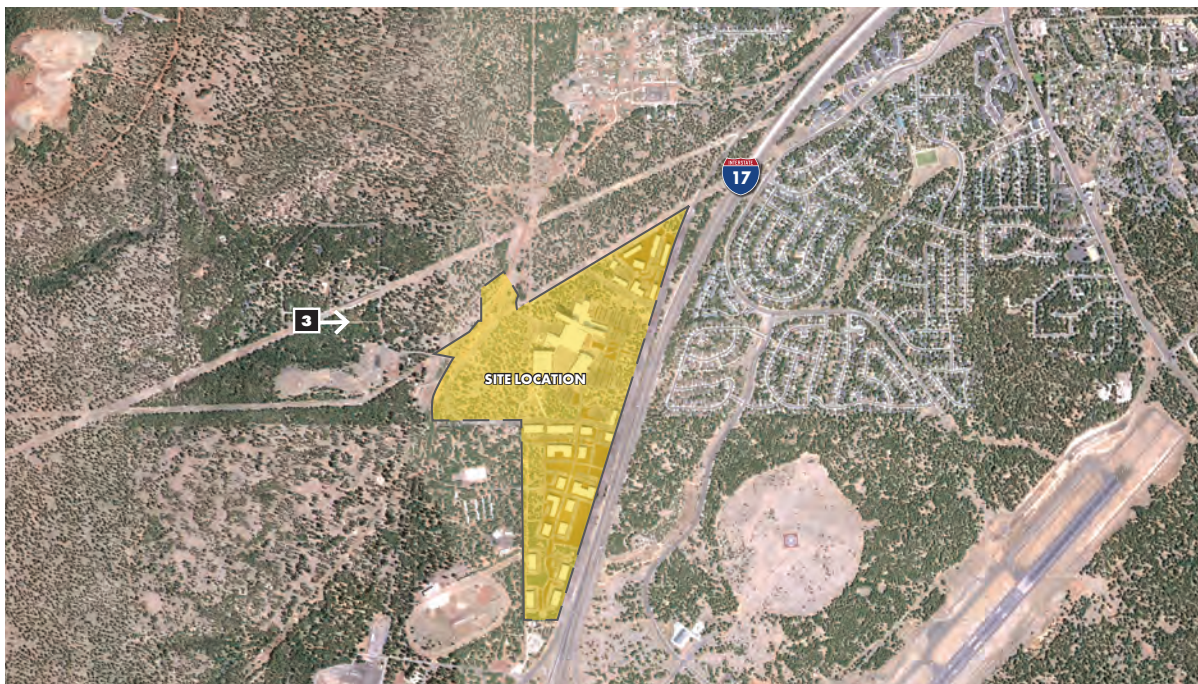


VIEW LOCATION KEY MAP



EXISTING CONDITION - VIEW FROM GETAWAY TRAIL

PHOTO 8/23/2022



VIEW LOCATION KEY MAP



PROPOSED CONDITION - VIEW FROM GETAWAY TRAIL

- 3D DIGITAL MODEL
- CAMERA HEIGHT APPROXIMATES AN AVERAGE PERSON'S HEIGHT



EXISTING CONDITION - VIEW FROM WOODY MTN RD AT N-S DRIVE

PHOTO 9/27/2022



VIEW LOCATION KEY MAP



PROPOSED CONDITION - VIEW FROM WOODY MTN RD AT N-S DRIVE

- 3D DIGITAL MODEL
- CAMERA HEIGHT APPROXIMATES AN AVERAGE PERSON'S HEIGHT
- GROUNDCOVER AND DETAILED GRADING ARE NOT SHOWN IN THIS VIEW

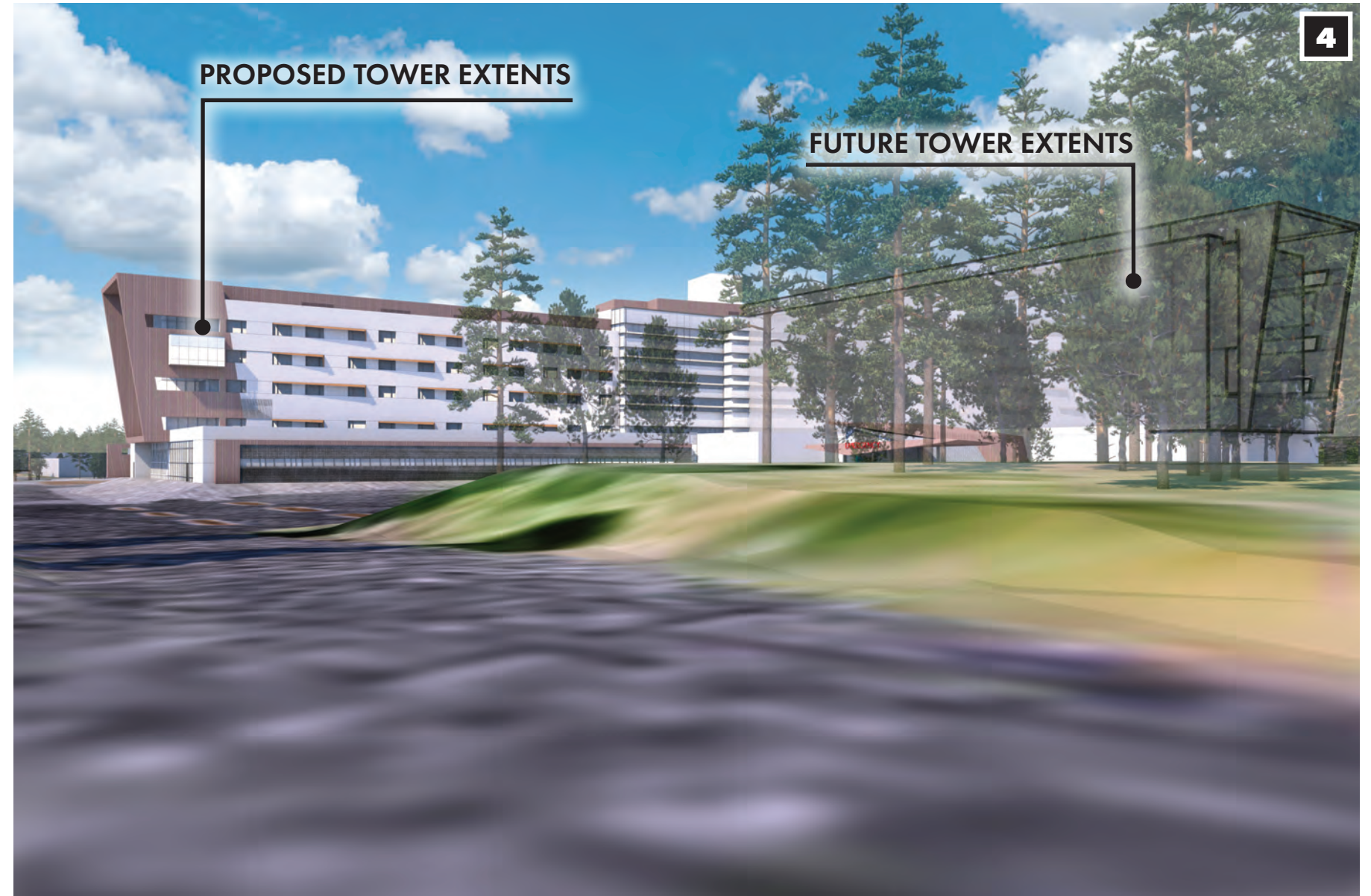


EXISTING CONDITION - VIEW FROM WOODY MTN RD AT N-S DRIVE

PHOTO 9/27/2022



VIEW LOCATION KEY MAP



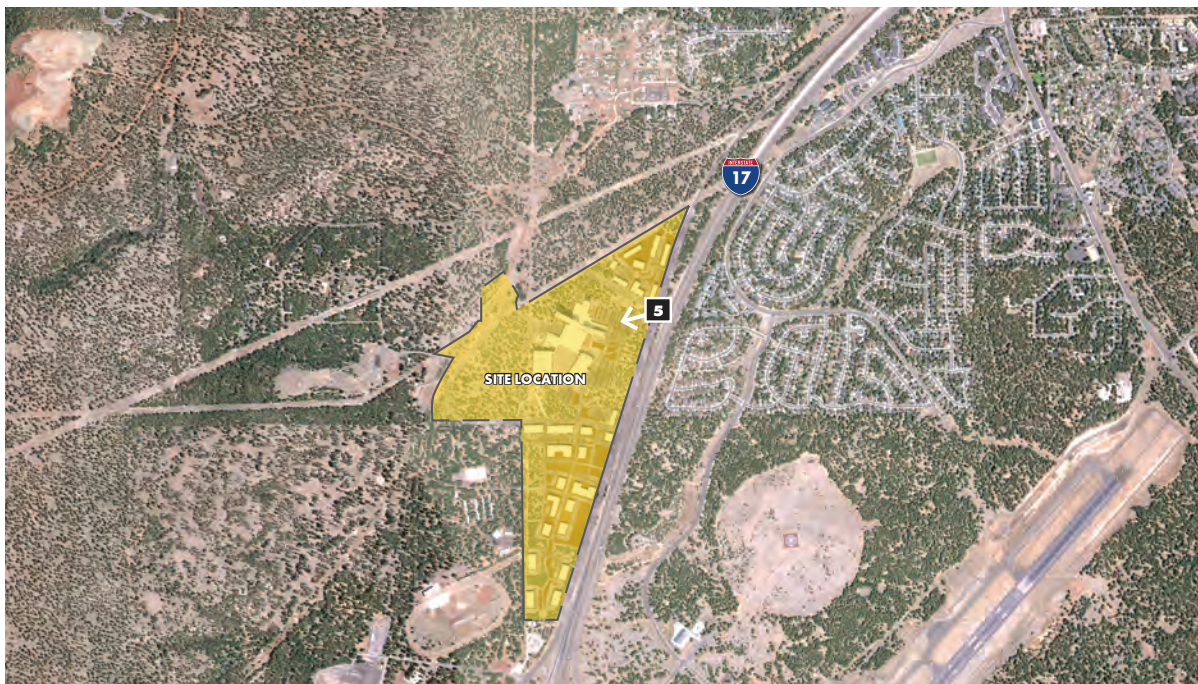
PROPOSED CONDITION - VIEW FROM WOODY MTN RD AT N-S DRIVE - NO PROPOSED LANDSCAPE

- 3D DIGITAL MODEL
- CAMERA HEIGHT APPROXIMATES AN AVERAGE PERSON'S HEIGHT
- NO PROPOSED LANDSCAPING IS SHOWN IN THIS VIEW

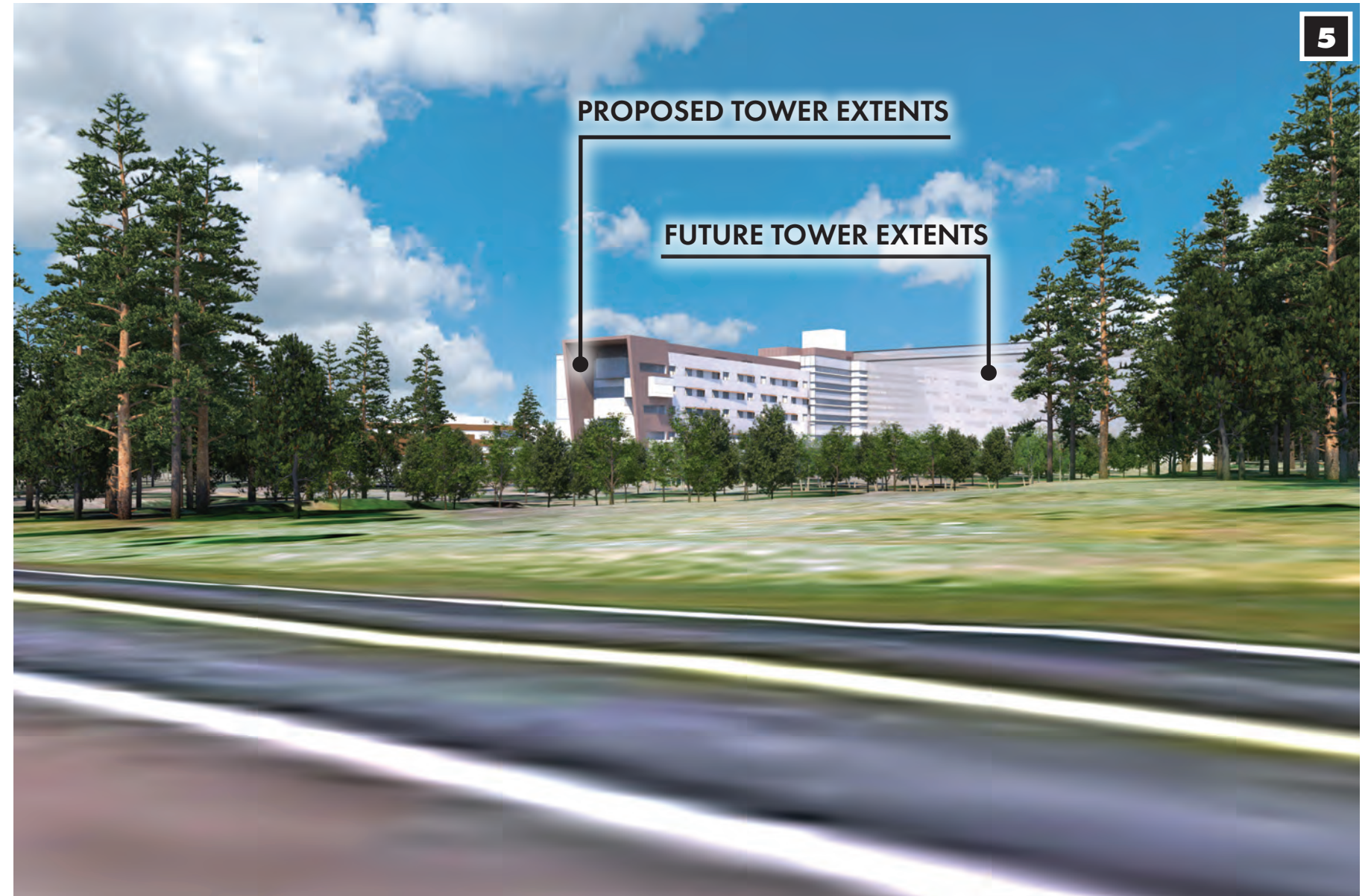


EXISTING CONDITION - VIEW FROM BEULAH BLVD AT WOODY MTN RD

PHOTO 8/30/2022



VIEW LOCATION KEY MAP



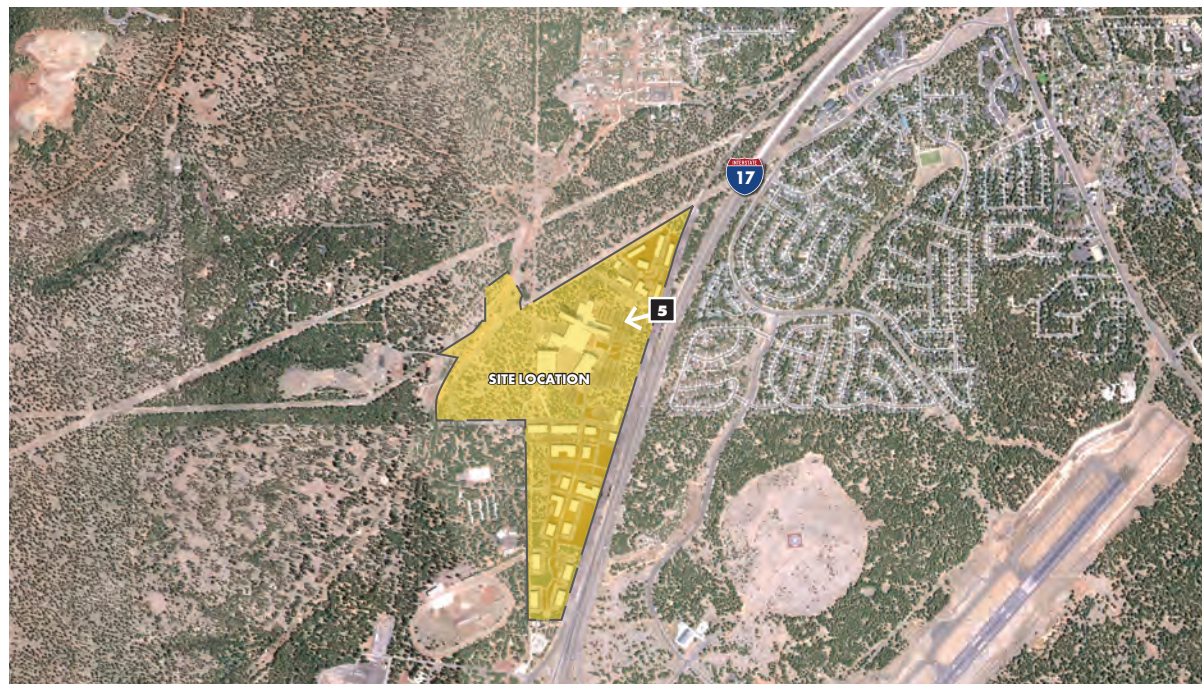
PROPOSED CONDITION - VIEW FROM BEULAH BLVD AT WOODY MTN RD

- 3D DIGITAL MODEL
- CAMERA HEIGHT APPROXIMATES AN AVERAGE PERSON'S HEIGHT
- GROUND COVER AND DETAILED GRADING ARE NOT SHOWN IN THIS VIEW

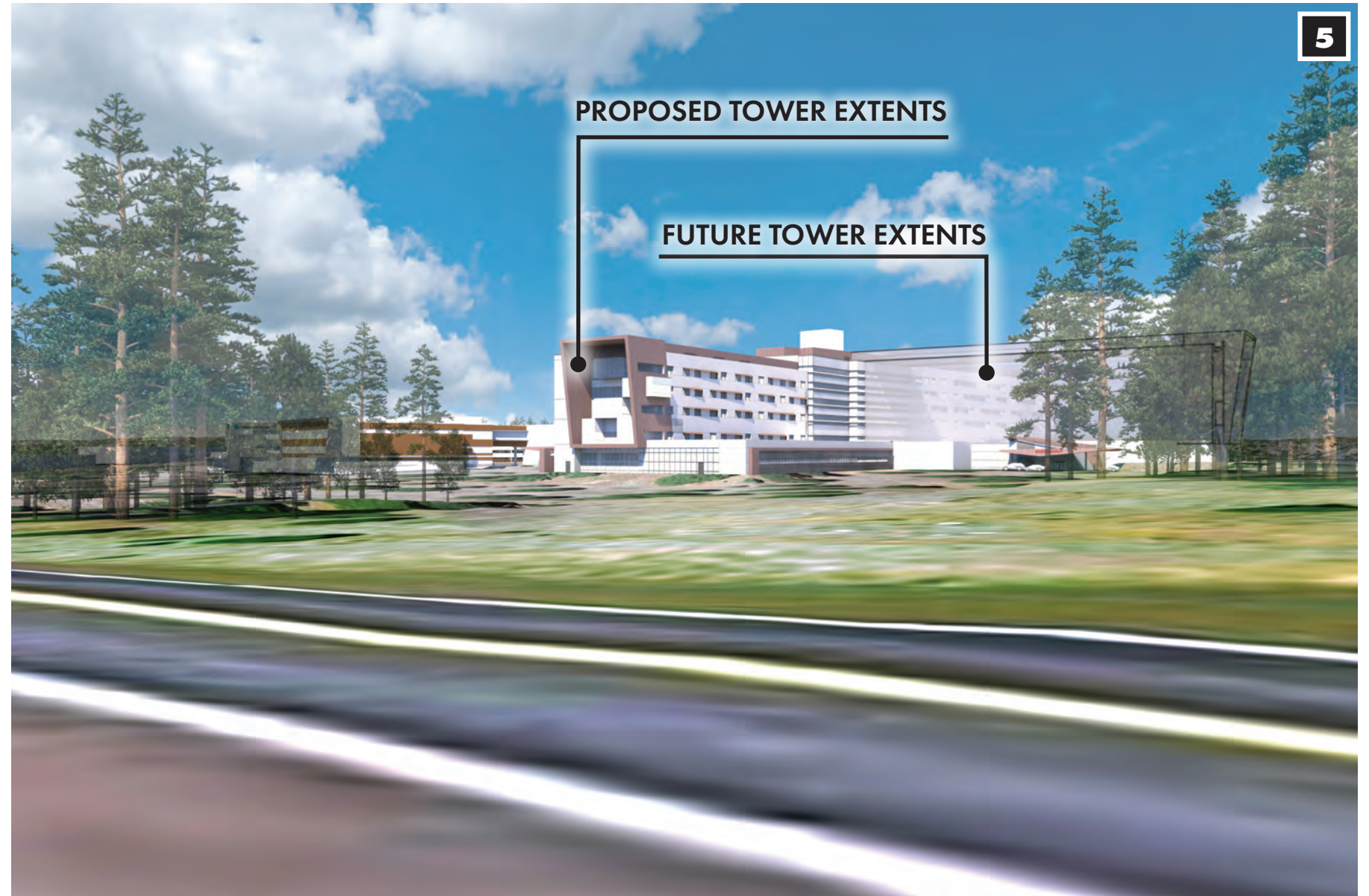


EXISTING CONDITION - VIEW FROM BEULAH BLVD AT WOODY MTN RD

PHOTO 8/30/2022



VIEW LOCATION KEY MAP



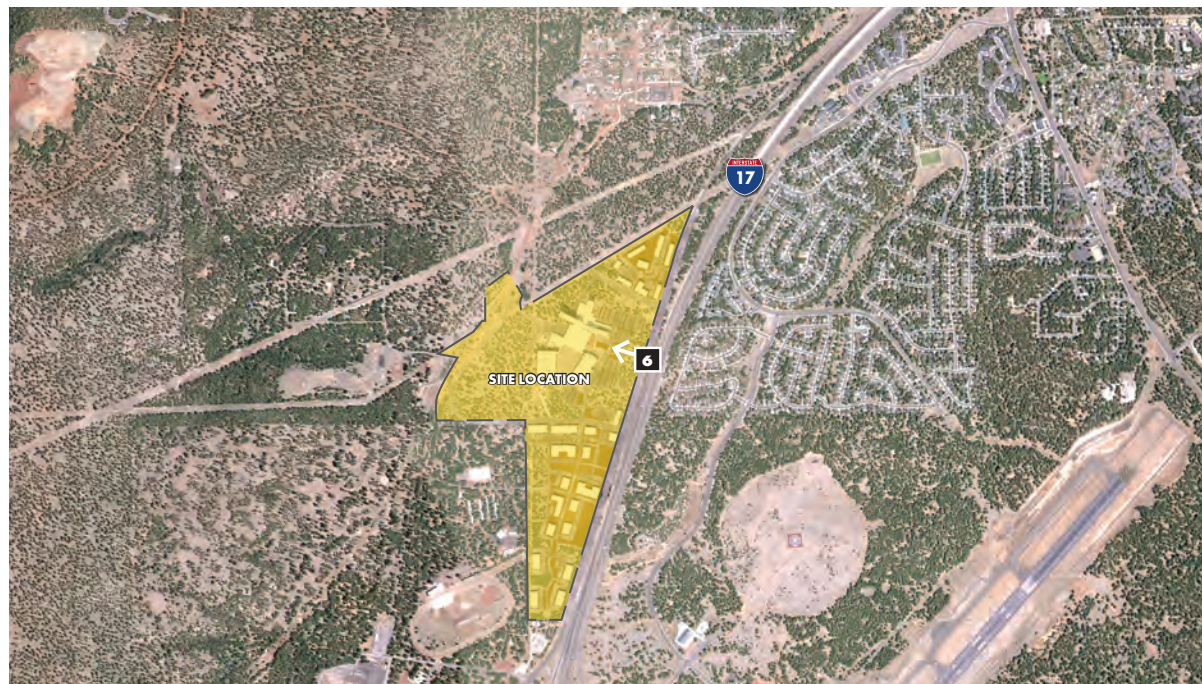
PROPOSED CONDITION - VIEW FROM BEULAH BLVD AT WOODY MTN RD - NO PROPOSED LANDSCAPE

- 3D DIGITAL MODEL
- CAMERA HEIGHT APPROXIMATES AN AVERAGE PERSON'S HEIGHT
- NO PROPOSED LANDSCAPING IS SHOWN IN THIS VIEW

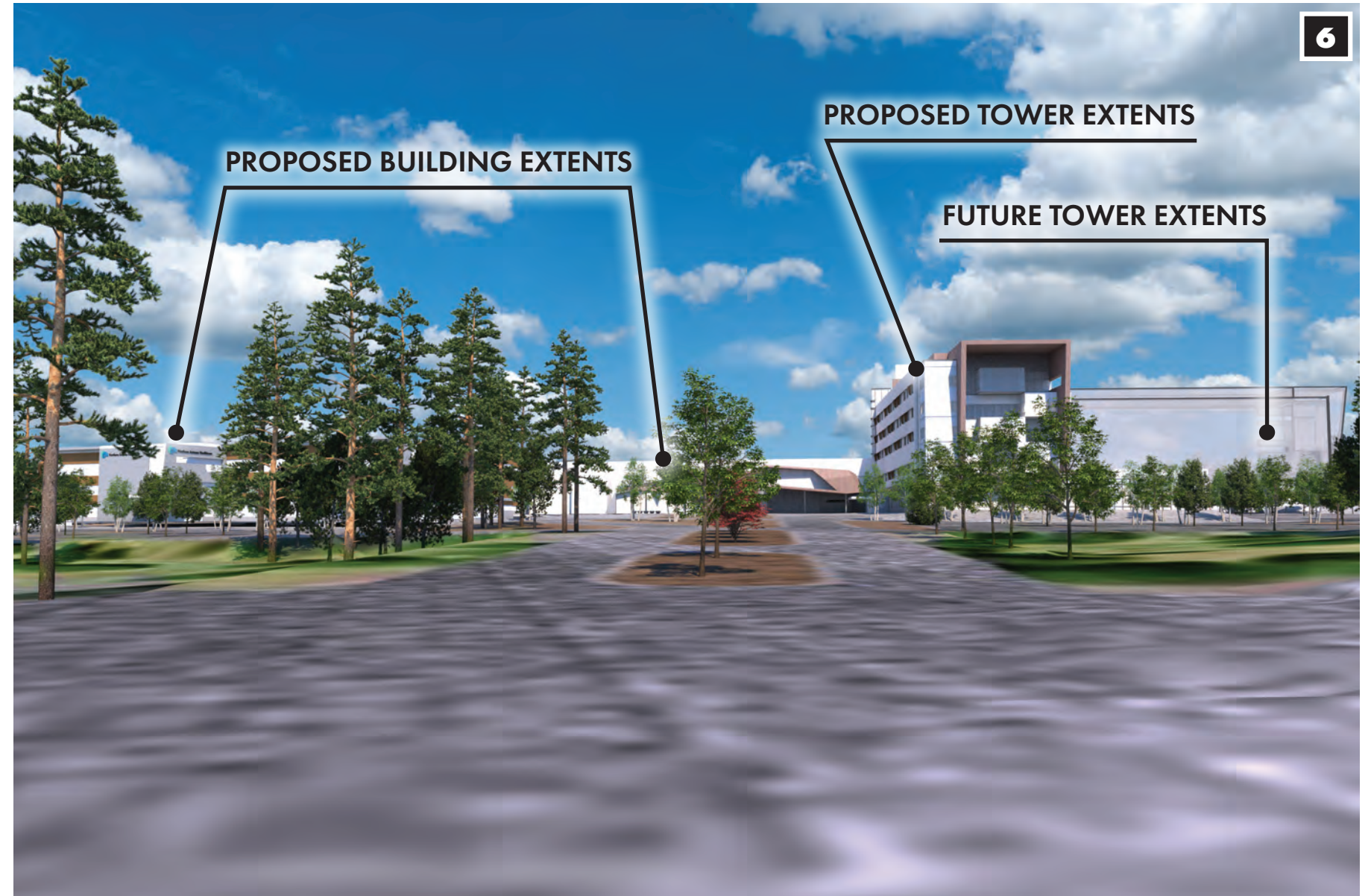


EXISTING CONDITION - VIEW FROM BEULAH BLVD AT MAIN HOSPITAL ENTRANCE

PHOTO 8/30/2022



VIEW LOCATION KEY MAP



6

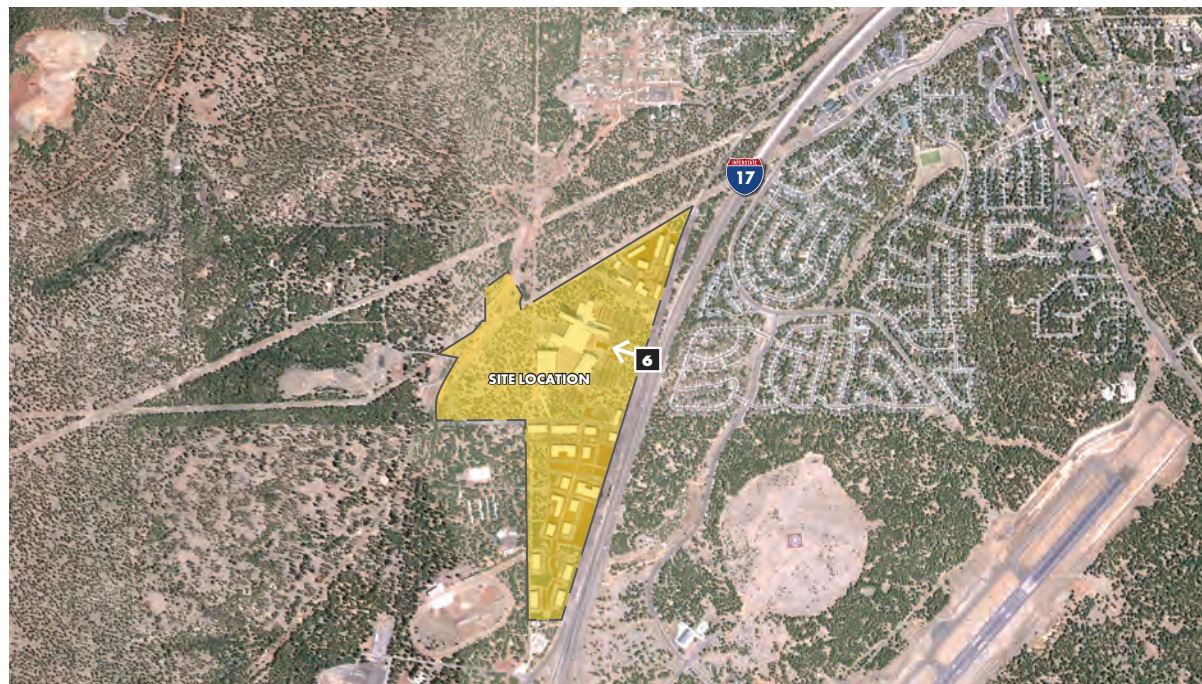
PROPOSED CONDITION - VIEW FROM BEULAH BLVD AT MAIN HOSPITAL ENTRANCE

- 3D DIGITAL MODEL
- CAMERA HEIGHT APPROXIMATES AN AVERAGE PERSON'S HEIGHT
- GROUNDCOVER AND DETAILED GRADING ARE NOT SHOWN IN THIS VIEW

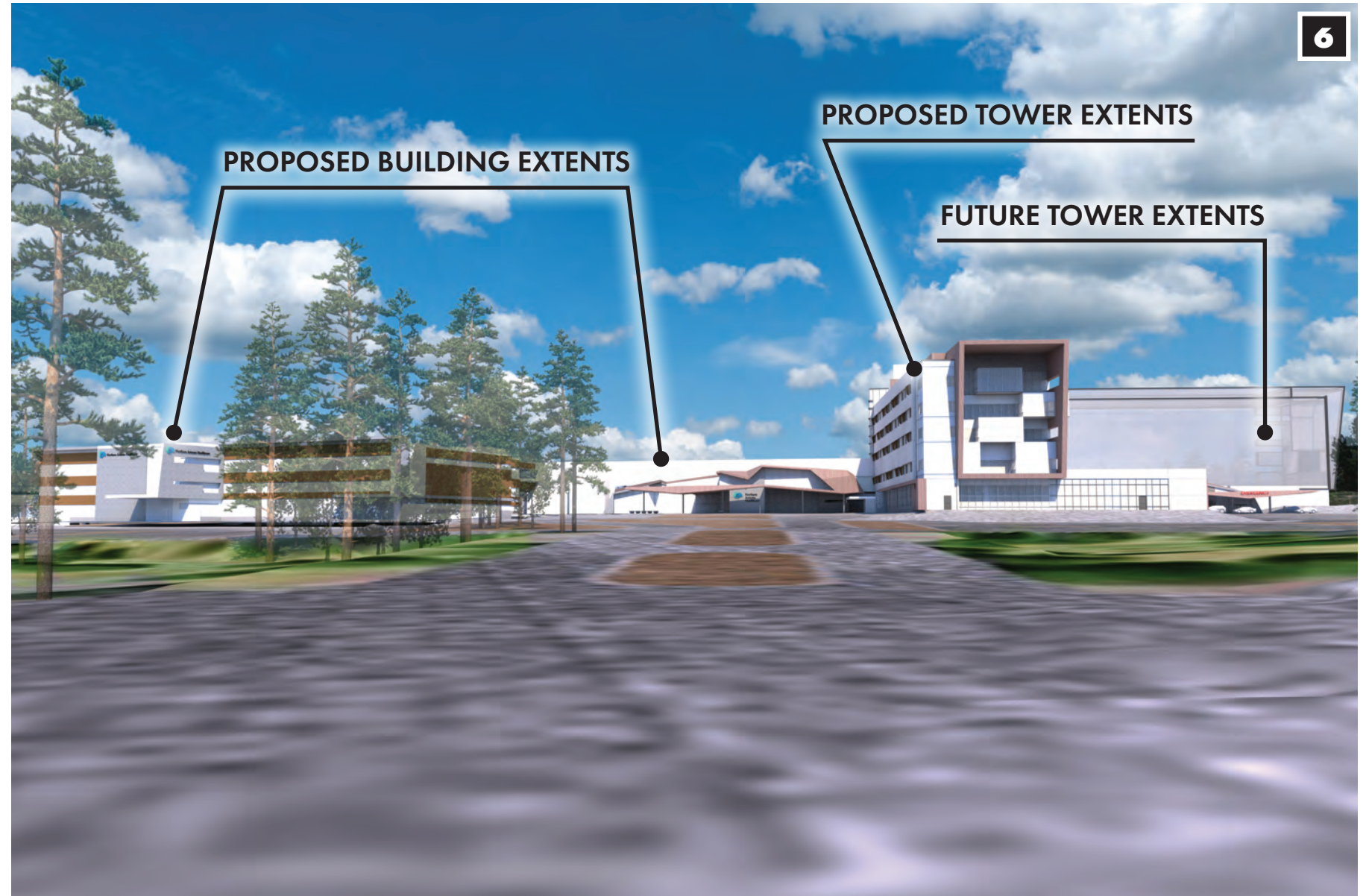


EXISTING CONDITION - VIEW FROM BEULAH BLVD AT MAIN HOSPITAL ENTRANCE

PHOTO 8/30/2022



VIEW LOCATION KEY MAP



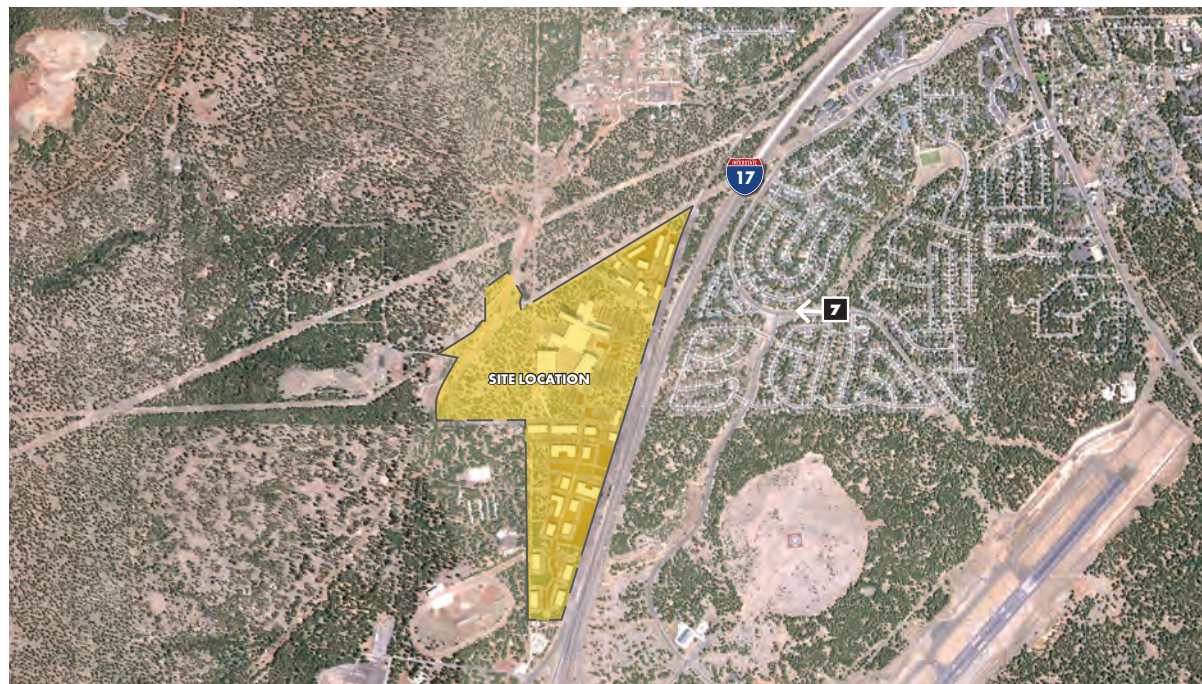
PROPOSED CONDITION - VIEW FROM BEULAH BLVD AT MAIN HOSPITAL ENTRANCE - NO PROPOSED LANDSCAPING

- 3D DIGITAL MODEL
- CAMERA HEIGHT APPROXIMATES AN AVERAGE PERSON'S HEIGHT
- NO PROPOSED LANDSCAPING IS SHOWN IN THIS VIEW



EXISTING CONDITION - VIEW FROM PONDEROSA TRAILS

PHOTO 8/23/2022



VIEW LOCATION KEY MAP



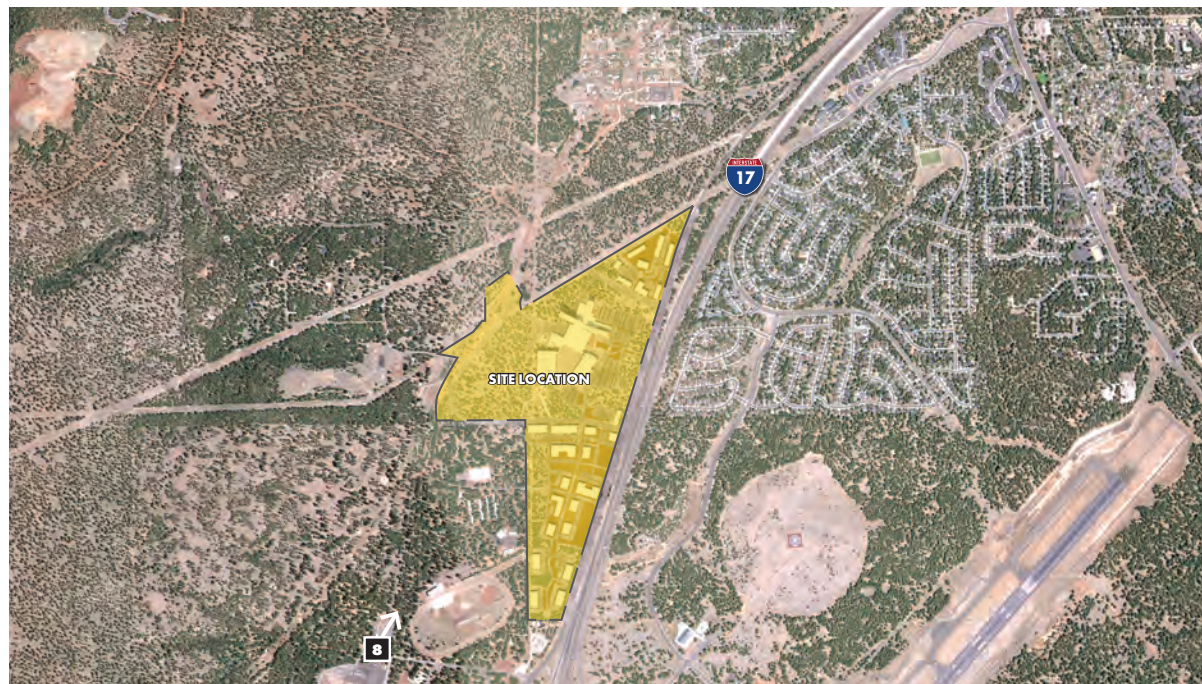
PROPOSED CONDITION - VIEW FROM PONDEROSA TRAILS

- 3D DIGITAL MODEL
- CAMERA HEIGHT APPROXIMATES AN AVERAGE PERSON'S HEIGHT



EXISTING CONDITION - VIEW FROM FORT TUTHILL

PHOTO 8/23/2022



VIEW LOCATION KEY MAP



PROPOSED HOSPITAL LOCATION
(NOT VISIBLE FROM THIS VANTAGE POINT)

PROPOSED CONDITION - VIEW FROM FORT TUTHILL

- 3D DIGITAL MODEL
- CAMERA HEIGHT APPROXIMATES AN AVERAGE PERSON'S HEIGHT