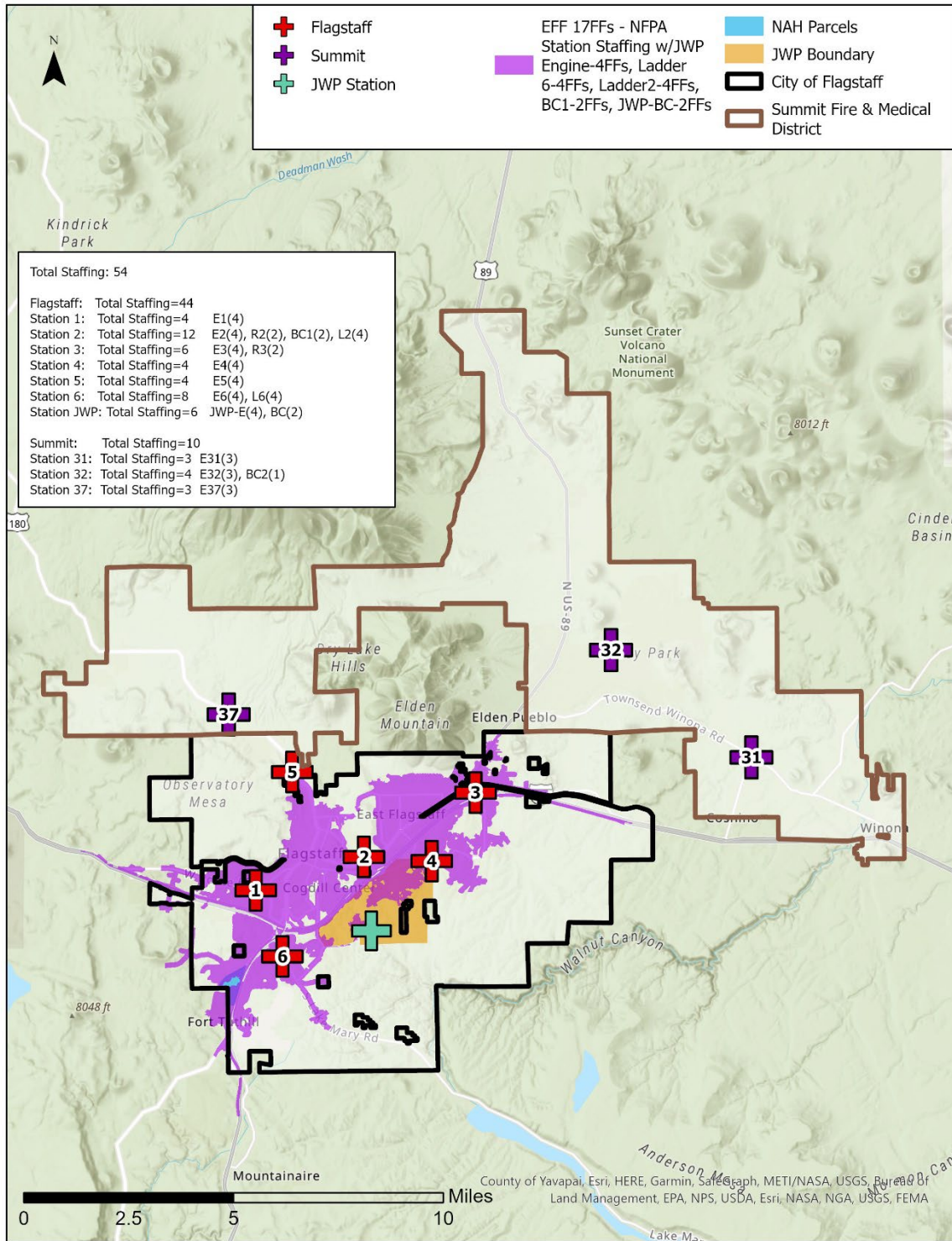


This map depicts the notional 8-minute EFF response time City-wide with NFPA 1710-compliant staffing on all existing units, staffed ladder companies at Stations 2 & 6, and an engine company at a new fire station in the JWP area. This scenario provides an NFPA 1710-compliant high-rise response to the NAH Health Village and other existing high-rise buildings.



This map depicts the notional 8-minute EFF response time City-wide with NFPA 1710-compliant staffing on all existing units, staffed ladder companies at Stations 2 & 6; plus an engine company and additional FFD battalion chief (BC) at a new fire station in the JWP area. This scenario provides an NFPA 1710-compliant high-rise response to the NAH Health Village and other existing high-rise buildings.

CONCLUSION

The FFD does not presently meet national standards and best practices for coverage and minimum staffing on front-line fire-EMS response units. The FFD's staffing deficiencies have accrued over decades of dedicated service by its members. As the City continues to grow and face 21st-Century threats, it has reached a point where the demand for all-hazards emergency response services cannot be met without additional FFD resources.

Given the City of Flagstaff's risk profile, regional importance, and limited surrounding mutual-aid resources, the FFD should work toward full compliance with the NFPA 1710 *Standard for the Organization and Deployment of Fire Suppression Operations, Emergency Medical Operations, and Special Operations to the Public by Career Fire Departments*.

As an interim step, with the increasing density and risks posed by near-term development activity, the FFD should immediately provide full-time, dedicated staffing on at least one of its two ladder trucks to ensure 24x7x365 availability and effectiveness to perform vital fireground support functions while adding depth to the entire FFD response system. It seems possible that this investment could also positively influence the FFD's ISP PPC rating; a reduction from ISO Class 2 to ISO Class 1 can be reasonably expected to reduce insurance policyholders' premiums on properties across the City.



Based on the predicted growth and expected increase in fire-EMS demand, the FFD requires an additional fire station along the JWP Corridor; the exact location/siting and number/type of response units staffed at this facility will depend on the ultimate density/character of the built environment in the JWP area, including an expected 3,000-4,000 new homes.

While the proposed NAH Health Village is currently planned for 315 residential units at medium density, its peripheral location and the relatively high(er) risk of the healthcare facilities requires additional resources in Flagstaff fire stations (existing/renovated, relocated, and/or new). Anticipated (and unrelated) development to the northwest of the NAH Health Village will likely create additional fire-EMS demand; given uncertainty around the ultimate character and timing of potential development activity in that area, FACETS is unable to forecast the expected resources needed in the future.

Leveraging contemporary building and fire codes to engineer safety into new structures from inception is a vital component of any strategy to reduce life, property, and environmental risk from fires; both the NAH and JWP developments will benefit from using state-of-the-art codes/standards throughout their buildings' lifecycles.

Development along the JWP Corridor, and in the NAH Health Village, creates additional risk of wildland urban interface (WUI) fires; additional wildfire mitigation and response resources should be considered for both areas.

While an economic analysis of revenue and expenditure flows from development activity is beyond the scope of this report, from discussions with City officials it seems likely that existing development impact fees are insufficient to provide additional fire-EMS resources that can keep pace with expanding service demand in growth areas.

FACETS appreciates, from first-hand experience in communities across the United States, the challenges of balancing multiple public service priorities with persistent fiscal constraints. This engagement, and report, are focused entirely on the fire protection and all-hazards emergency response challenges facing the City of Flagstaff today.

REFERENCES

- Arizona Department of Emergency and Military Affairs. (2018). State of Arizona Hazard Mitigation Plan. Phoenix, AZ.
- Center for Public Safety Excellence. (2020). CFAI 10th Edition: Quality Improvement for the Fire and Emergency Services. Chantilly, VA.
- Coconino County. (2015). 2015 Coconino County Multi-Jurisdictional Hazard Mitigation Plan. Flagstaff, AZ.
- FACETS Consulting, LLP. (2021). Northern Arizona Healthcare Health Village, Fire Impact Assessment. Phoenix, AZ.
- Federal Emergency Management Agency. (2021). National Risk Inventory for Natural Hazards. <https://www.fema.gov/flood-maps/products-tools/national-risk-index>
- Fire Management Group, LLC. (2021). Wildland Fire Risk Assessment and Mitigation Report: Northern Arizona Healthcare, Proposed Health Village. Flagstaff, AZ.
- City of Flagstaff. (2014). Flagstaff Regional Plan 2030. Flagstaff, AZ.
- Florida, Richard. (2019). How Should We Define the Suburbs. Bloomberg News. June 12, 2019.
- Headwaters Economics. (2016). Flagstaff, Arizona: Leveraging Partnerships and Public Support to Tackle Growing Wildfire Concerns. www.headwaterseconomics.org. Accessed November 2, 2022.
- International Public Safety Data Institute. (2021). FireCARES: Community Assessment, Response Evaluation System. Washington, DC.
- Jennings, CR. (1999). Socioeconomic Characteristics and Their Relationship to Fire Incidence: A Review of the Literature. *Fire Technology*. 35, 7-34.
- National Fire Protection Association. (2022). US Fire Department Profile 2020. Quincy, MA.
- National Fire Protection Association. (2017). NFPA 550: Guide to the Fire Safety Concepts Tree, 2017 Edition. Quincy, MA.
- National Fire Protection Association. (2016). NFPA 551: Guide to the Evaluation of Fire Risk Assessments, 2016 Edition. Quincy, MA.
- National Fire Protection Association. (2018). NFPA 1143: Standard for Wildland Fire Management, 2018 Edition. Quincy, MA.

National Fire Protection Association. (2018). NFPA 1144: Standard for Reducing Structure Ignition Hazards from Wildland Fire, 2018 Edition. Quincy, MA.

National Fire Protection Association. (2020). NFPA 1250: Recommended Practice in Fire and Emergency Service Organization Risk Management, 2020 Edition. Quincy, MA.

National Fire Protection Association. (2020). NFPA 1300: Standard on Community Risk Assessment and Community Risk Reduction Plan Development, 2020 Edition. Quincy, MA.

National Fire Protection Association. (2020). NFPA 1452: Guide for Training Fire Service Personnel to Conduct Community Risk Reduction for Residential Occupancies, 2020 Edition. Quincy, MA.

National Fire Protection Association. (2016). NFPA 1600: Standard on Disaster/Emergency Management and Business Continuity/Continuity of Operations Programs, 2016 Edition. Quincy, MA.

National Fire Protection Association. (2015). NFPA 1620: Standard for Pre-Incident Planning, 2015 Edition. Quincy, MA.

National Fire Protection Association. (2020). NFPA 1710: Standard for the Organization and Deployment of Fire Suppression Operations, Emergency Medical Operations, and Special Operations to the Public by Career Fire Department, 2020 Edition. Quincy, MA.

National Fire Protection Association. (2019). NFPA 1730: Standard on Organization and Deployment of Fire Prevention Inspection and Code Enforcement, Plan Review, Investigation, and Public Education Operations, 2019 Edition. Quincy, MA.

National Fire Protection Association. (2021). Fire Safety in the US Since 1980. Quincy, MA.

National Fire Protection Association. (2021). Home Heating Fires. Quincy, MA.

National Fire Protection Association. (2021). Smoke Alarms in US Home Fires. Quincy, MA.

National Fire Protection Association. (2020). Fire Loss in the United States. Quincy, MA.

National Fire Protection Association. (2020). Fires by Occupancy or Property Type. Quincy, MA.

National Fire Protection Association. (2020). Home Cooking Fires. Quincy, MA.

National Fire Protection Association. (2020). Home Candle Fires. Quincy, MA.

National Fire Protection Association. (2020). Fireworks Fires and Injuries. Quincy, MA.

National Fire Protection Association. (2020). Home Grill Fires. Quincy, MA.

National Fire Protection Association. (2020). Vehicle Fires. Quincy, MA.

National Fire Protection Association. (2020). Research Roadmap: Environmental Impact of Fires in the Built Environment. Quincy, MA.

National Fire Protection Association. (2020). Home Structure Fires. Quincy, MA.

National Fire Protection Association. (2020). Fires in Structures Under Construction or Renovation. Quincy, MA.

National Fire Protection Association. (2019). US Fire Death Rates by State. Quincy, MA.

National Fire Protection Association. (2019). Electrical Fires. Quincy, MA.

National Fire Protection Association. (2019). The Smoking Material Fire Problem. Quincy, MA.

National Fire Protection Association. (2019). Electrical Fires. Quincy, MA.

National Fire Protection Association. (2018). Fires in Industrial or Manufacturing Properties. Quincy, MA.

National Fire Protection Association. (2018). Home Fire Victims by Age and Gender. Quincy, MA.

National Fire Protection Association. (2018). Residential Electrical Fire Problem: The Data Landscape. Quincy, MA.

National Fire Protection Association. (2018). Natural Gas and Propane Fires, Explosions and Leaks Estimates and Incident Descriptions. Quincy, MA.

National Fire Protection Association. (2018). Impact of Home Fire Sprinkler Requirements in California. Quincy, MA.

National Fire Protection Association. (2018). Brush, Grass and Forest Fires. Quincy, MA.

National Fire Protection Association. (2017). The Total Cost of Fire in the United States. Quincy, MA.

National Fire Protection Association. (2017). Trends and Patterns of U.S. Fire Losses. Quincy, MA.

National Fire Protection Association. (2017). Home Fires Involving Clothes Dryers and Washing Machines. Quincy, MA.

National Fire Protection Association. (2017). Intentional Fires. Quincy, MA.

National Fire Protection Association. (2017). Structure Fires in Health Care Facilities. Quincy, MA.

National Fire Protection Association. (2017). Vacant Buildings. Quincy, MA.

National Fire Protection Association. (2017). Fire Alarms and At Risk Populations. Quincy, MA.

National Fire Protection Association. (2017). Wildland/Urban Interface: Fire Department Wildfire Preparedness and Readiness Capabilities. Quincy, MA.

National Fire Protection Association. (2016). Stakeholder Perceptions of Home Fire Sprinklers. Quincy, MA.

National Fire Protection Association. (2016). Structure Fires in U.S. Warehouses. Quincy, MA.

National Fire Protection Association. (2016). Fire Based Mobile Integrated Healthcare and Community Paramedicine (MIH & CP) – Data and Resources. Quincy, MA.

National Fire Protection Association. (2015). The Environmental Impact of Fire. Quincy, MA.

National Fire Protection Association. (2015). Pathways for Building Fire Spread at the Wildland Urban Interface. Quincy, MA.

National Fire Protection Association. (2014). Physical Disability as a Factor in Home Fire Deaths. Quincy, MA.

National Fire Protection Association. (2013). False Alarm Activity in the U.S. Quincy, MA.

National Institute of Standards and Technology. (2016). Community Resilience Planning Guide for Buildings and Infrastructure Systems: Volumes I and II, May 2016. Gaithersburg, MD.

National Institute of Standards and Technology. (2015). Community Resilience Economic Decision Guide for Buildings and Infrastructure Systems, December 2015. Gaithersburg, MD.

Rapkin, Chester. (1983). The Social and Economic Consequences of Residential Fires. Lexington Books, Lexington, MA.

Rubadou, Chelsea. (2020). Vision 20/20 Symposium 6, Two Years Immersed in CRR: Research Findings.

Sawyer, JV. (2016). Vision 20/20 Model Performance in Fire Prevention Symposium 2016, No More Fire Deaths.

Thiel, AK & Jennings, CJ. (2012). Managing Fire and Emergency Services, 4th Edition. International City/County Management Association. Washington, DC. ICMA Press.

United States Fire Administration. (2021). Civilian Fire Fatalities in Residential Buildings, 2017-2019. Emmitsburg, MD.

United States Fire Administration. (2019). Fire in the United States: 2008-2017, 20th Edition. Emmitsburg, MD.

United States Fire Administration. (2012). Changing Severity of Home Fires Workshop Report. Emmitsburg, MD.

United States Fire Administration. (1997). Socioeconomic Factors and the Incidence of Fire. Emmitsburg, MD.

UL. (2020). Fire Safety Research Institute: Comparison of Natural and Synthetic Home Furnishings. Northbrook, IL.

UL. (2020). Fire Safety Research Institute: Residential Flashover Prevention Research. Northbrook, IL.

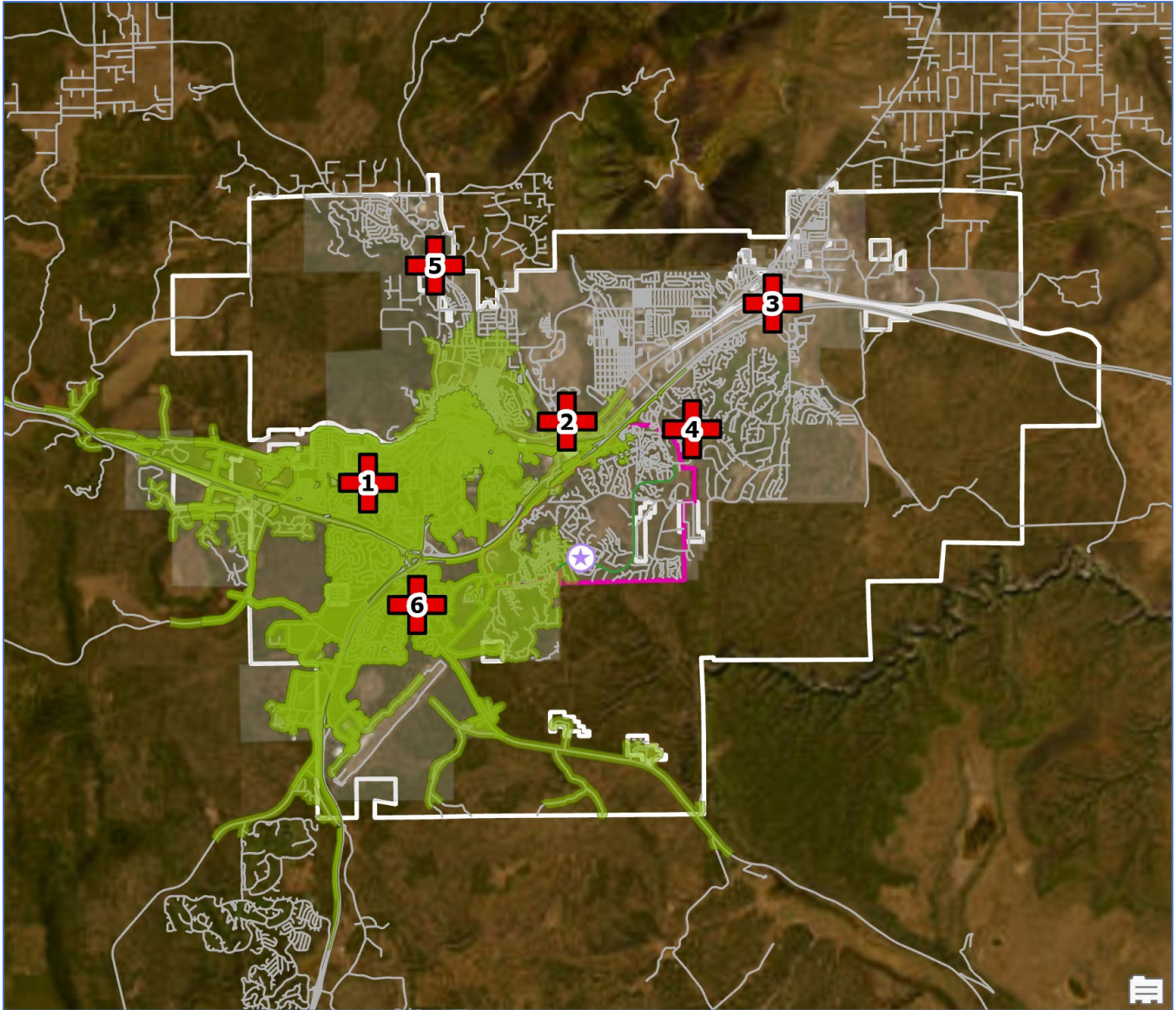
UL. (2019). Fire Safety Research Institute: New Smoke Alarm Technology and the Impact on Public Safety. Northbrook, IL.

UL. (2018). Fire Safety Research Institute: Close Before You Doze. Northbrook, IL.

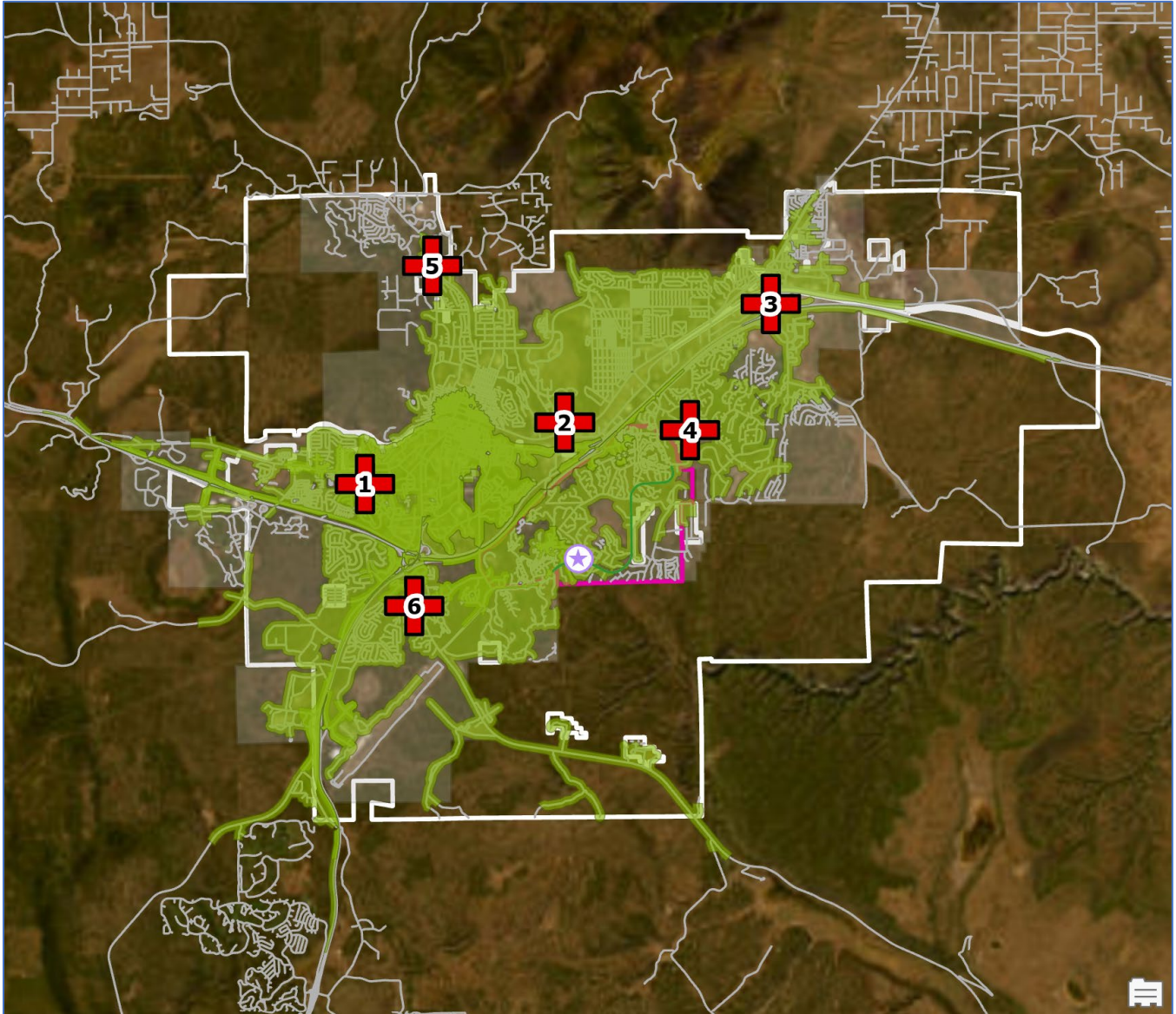
Vision 20/20. (2021). Community Risk Assessment, A Guide for Conducting a Community Risk Assessment. Warrenton, VA.

Vision 20/20. (2021). Community Risk Assessment, A Guide for Developing a Community Risk Reduction Plan. Warrenton, VA.

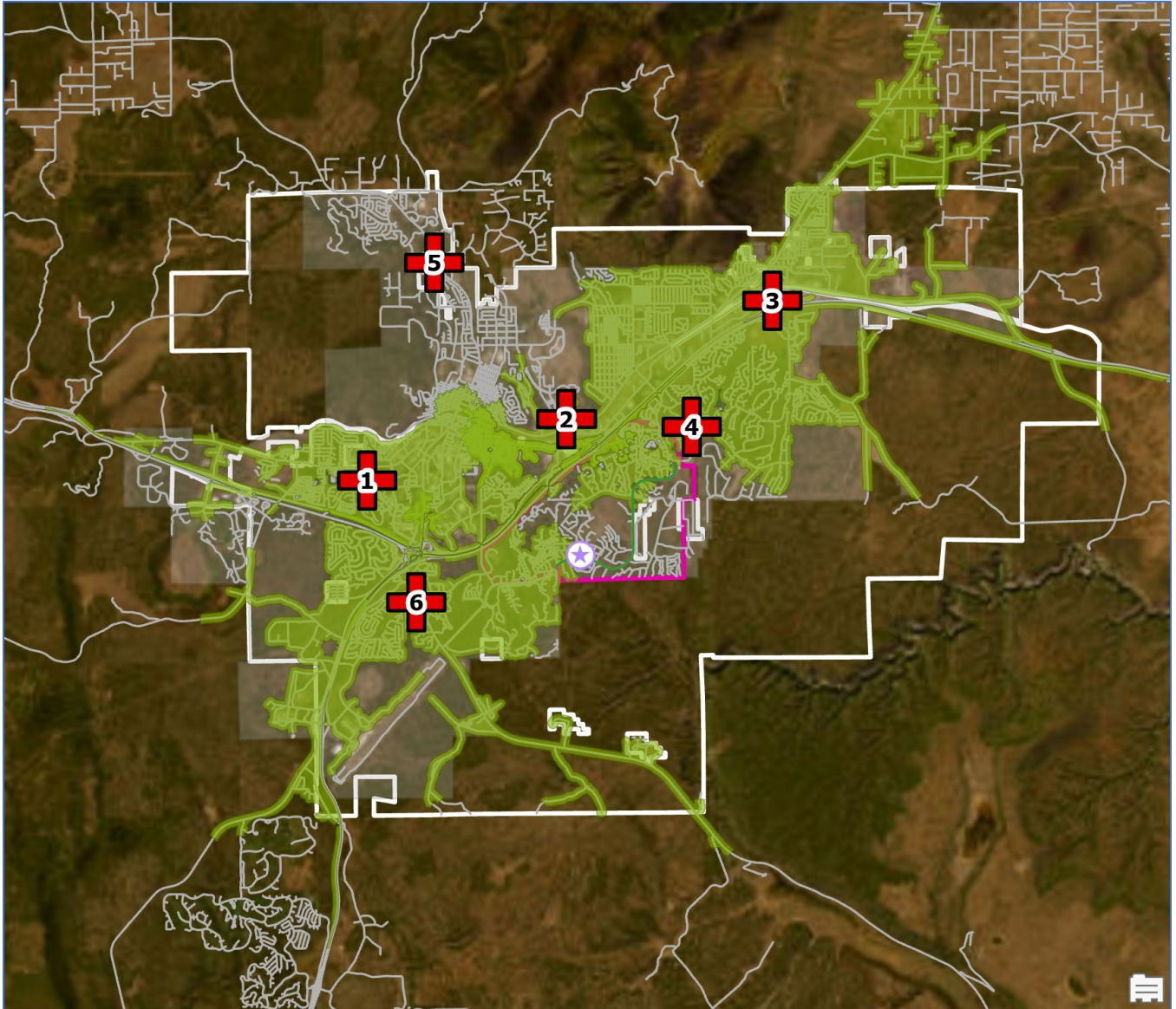
APPENDIX A: FFD Ladder Company Location Scenarios



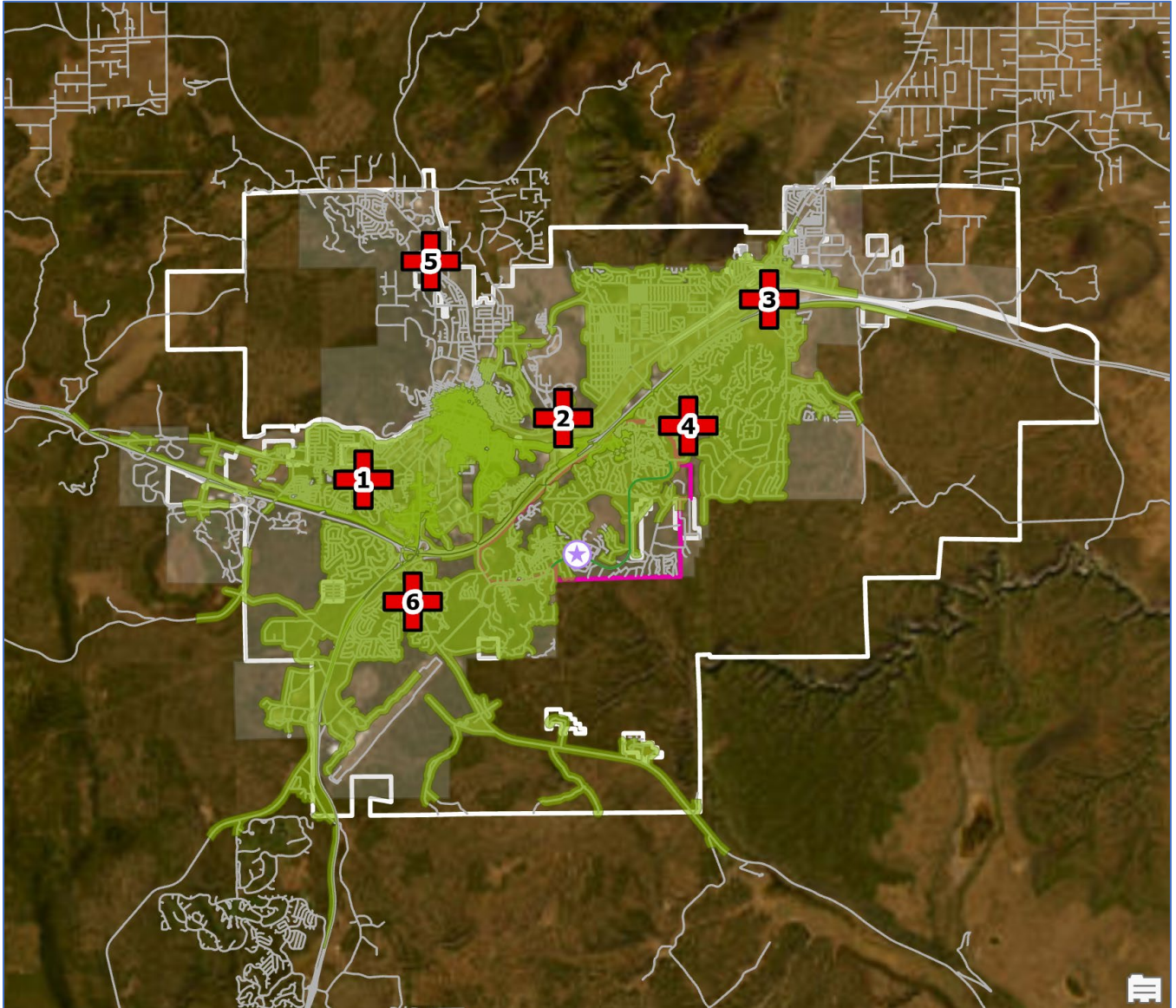
This map depicts a notional 8-minute travel time scenario for 2 fully-staffed ladder companies responding from FFD Stations 1 and 6.



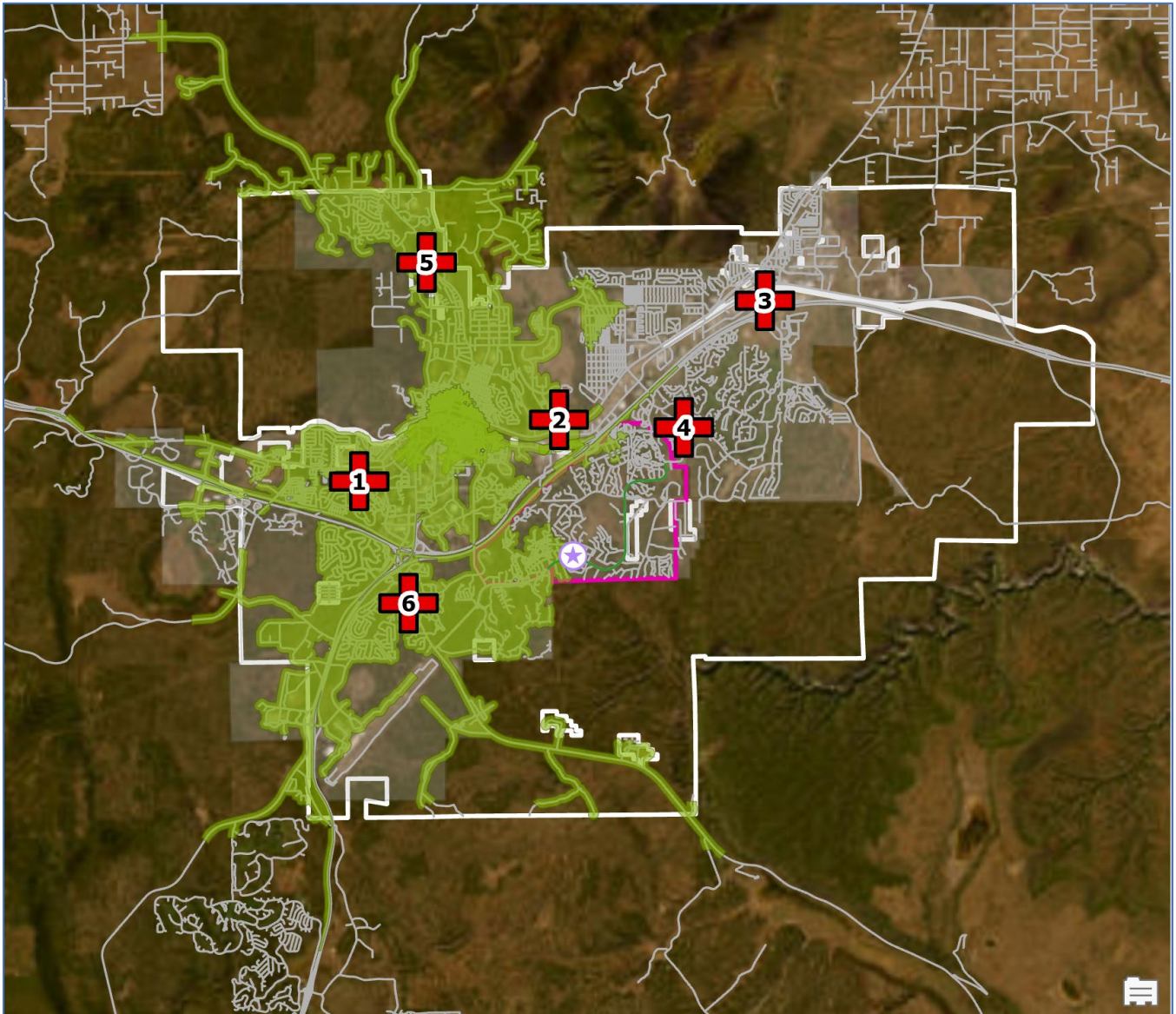
This map depicts a notional 8-minute travel time scenario for 2 fully-staffed ladder companies responding from FFD Stations 2 and 6.



This map depicts a notional 8-minute travel time scenario for 2 fully-staffed ladder companies responding from FFD Stations 3 and 6.

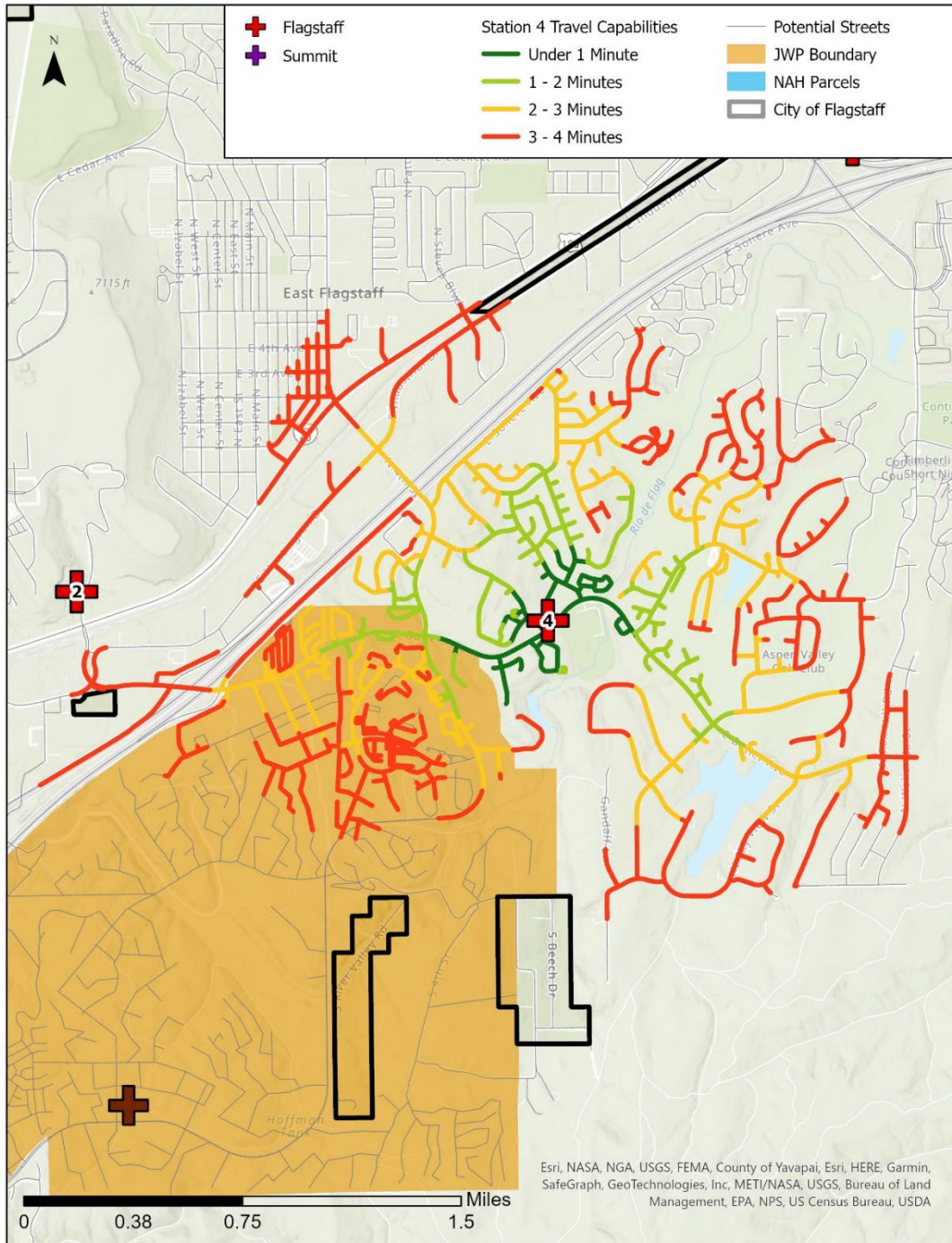


This map depicts a notional 8-minute travel time scenario for 2 fully-staffed ladder companies responding from FFD Stations 4 and 6.



This map depicts a notional 8-minute travel time scenario for 2 fully-staffed ladder companies responding from FFD Stations 5 and 6.

APPENDIX B: FFD Station 4 Location Analysis



This map illustrates the contours of the travel coverage that can be provided by a response unit housed at FFD Fire Station 4 in up to four minutes.

Flagstaff Fire Station 4 is located at 4040 East Butler Avenue in east-central Flagstaff. The station is situated on a small parcel of land near the intersection with North Mustang Way. The station houses Engine 4, a three-person Type I (structural) engine, a Type VI (wildland) engine that is cross-staffed with Engine 4, and a water tender (water tanker) that is also cross-staffed with Engine 4.

In terms of travel distance and response times—given current service demand—the location of Fire Station 4 adequately serves its first-due area. Moving the station to the north would create overlaps with the coverage provided by Fire Station 3. Moving the station to the west (if the street network would permit it) would create overlaps in coverage with Fire Station 2. Moving the station to the south would impinge on the coverage that will be provided by the proposed JWP fire station and create gaps in the area between Fire Station 4 and Fire Station 3. The JWP area cannot adequately be covered by Fire Station 4 and Fire Station 6.

Fire Station 4 is located on an arterial street with good access to the neighborhoods and other occupancies that surround it. The station is located in the lower section of a valley that requires an uphill response in both directions.

The primary challenge to the existing fire station is its limited size and the size of the parcel. The station is not capable of housing additional response units or staffing. Due to the size of the fire station's parcel, expansion of the current station on the existing site could be impractical. If the presence of additional response units or staffing at Fire Station 4 was to become appropriate, the current fire station may not be capable of accommodating them.

APPENDIX C: Notional “Clean Slate” FFD Station Location Scenarios

The City of Flagstaff—due to its overall shape, topography, street network, service demand profile, and the existence of limited access highways and rail lines—presents some difficulties in siting and distributing fire-EMS stations to provide an adequate level of emergency service with equitable coverage City-wide.

That said, Flagstaff has a network of six existing fire stations and an apparent need for an additional station based on growth in the JWP area.

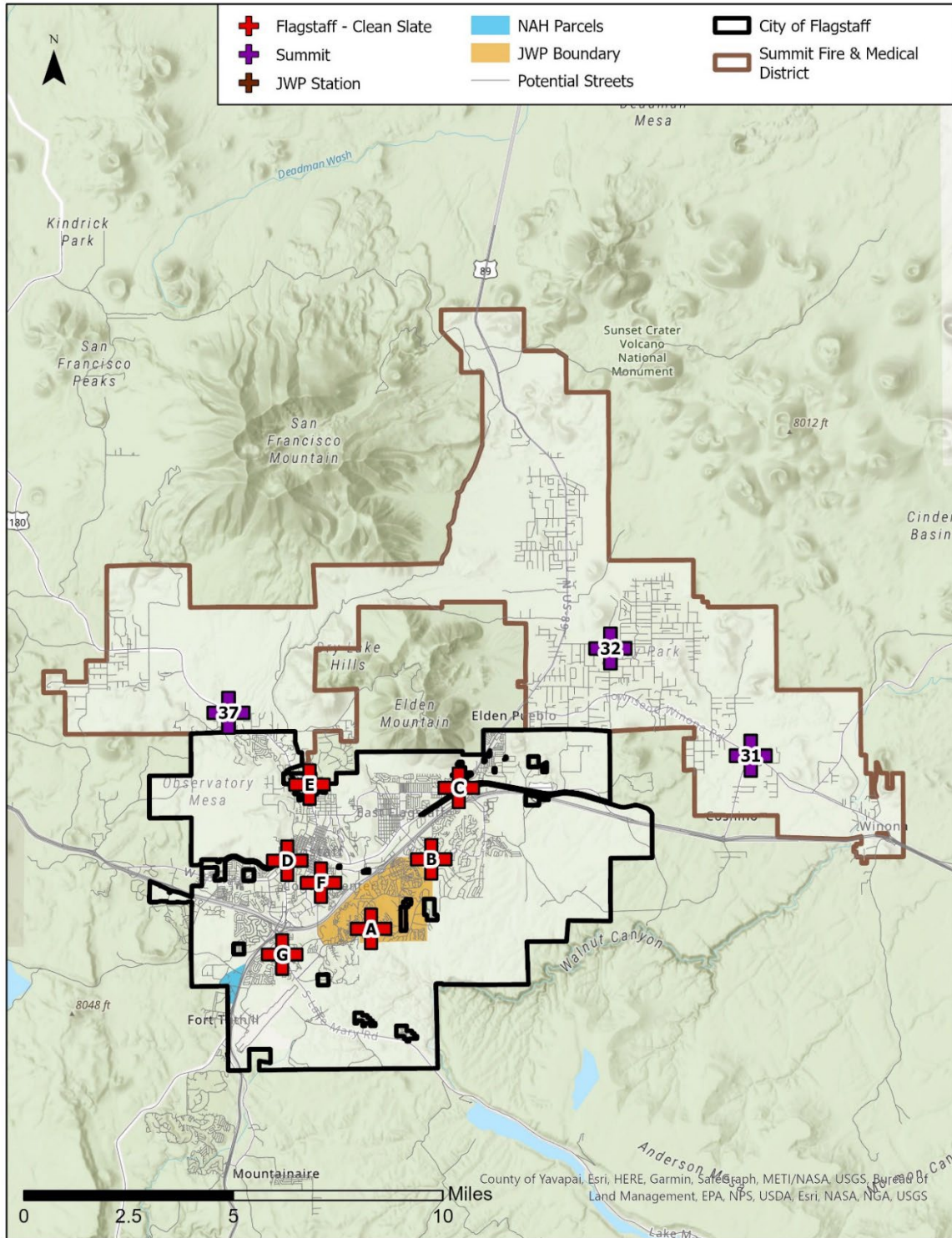
This appendix illustrates the notional locations for seven Flagstaff fire stations if there was no limitation on funding or available land. This distribution of fire stations was guided by: access to the maximum number of existing occupancies in Flagstaff; optimizing overall fire-EMS coverage based on current demand and equitable response times; and a model of development in the JWP corridor compiled from our research for this project (not a suggestion of how the area should be developed).

The seven “clean slate” stations would be staffed with 7 engine companies, 2 ladder companies, 3 rescues, and 2 battalion chiefs.

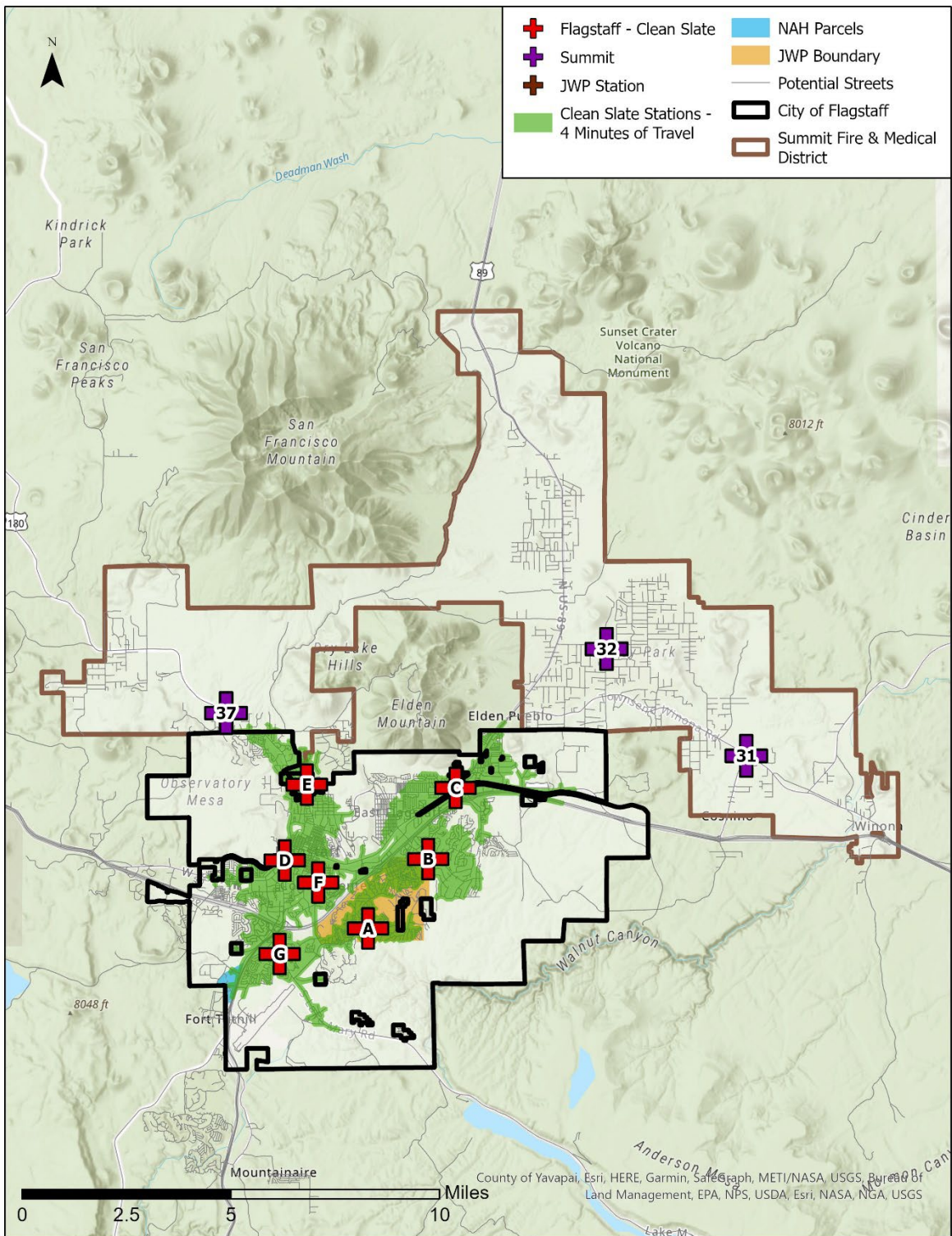
Station	Staffing	Station	Staffing
Station A		Station F	
Engine	4	Engine	4
Battalion Chief	2	Rescue	2
Station B		Battalion Chief	2
Engine	4	Station G	
Ladder	4	Engine	4
Rescue	2	Ladder	4
Station C		Summit Station 31	
Engine	4	Engine	3
Rescue	2	Summit Station 32	
Station D		Engine	3
Engine	4	Battalion Chief	1
Station E		Summit Station 33	
Engine	4	Engine	3

Flagstaff TOTAL On-Duty Staffing per Shift: 46

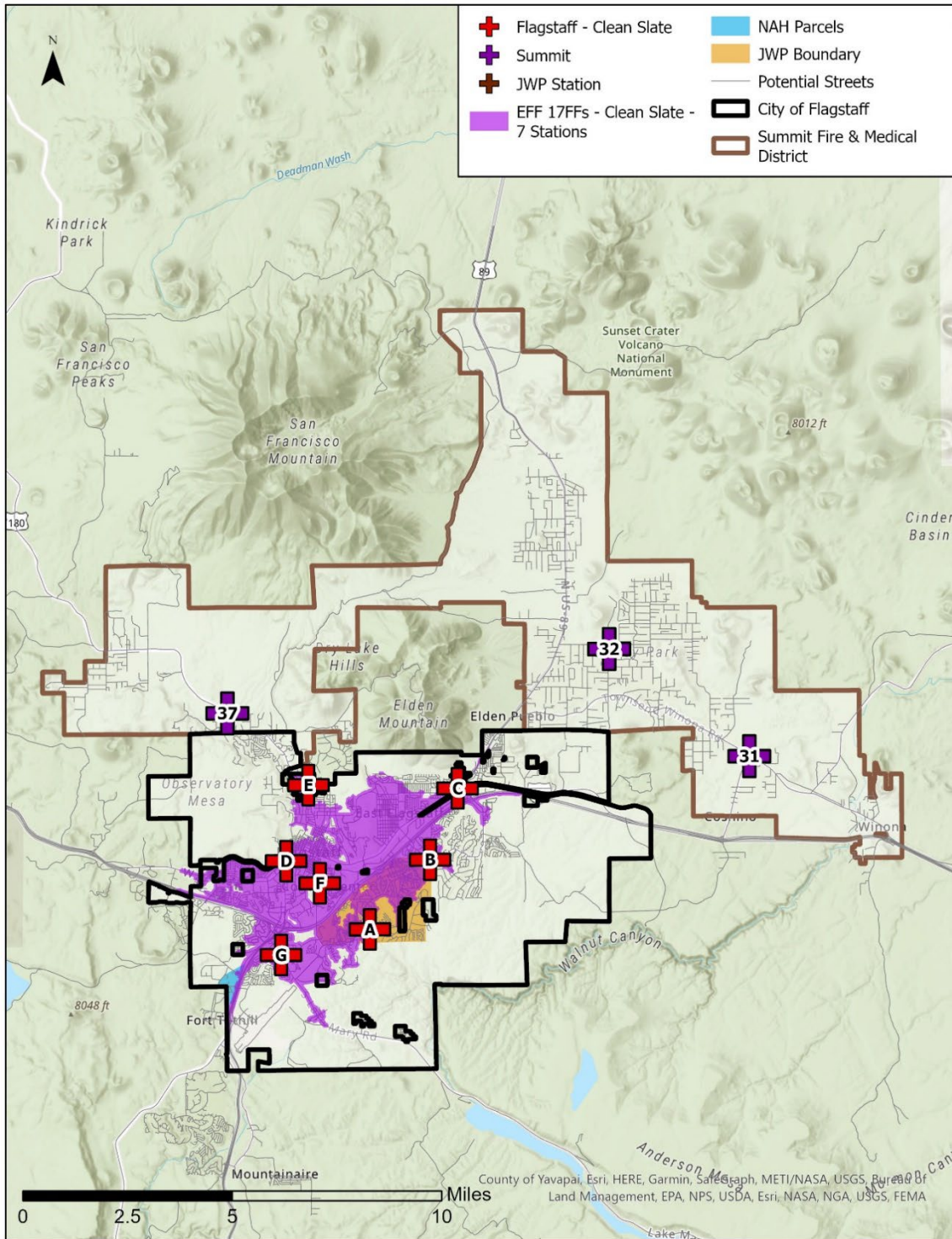
Summit TOTAL On-Duty Staffing per Shift: 10



The proposed locations align closely with the current locations of Fire Station 1, Fire Station 3, Fire Station 4, Fire Station 5, Fire Station 6, and the location recommended for the JWP fire station. The location of Fire Station 2 is pulled to the west due to the density of population and emergency incidents in downtown Flagstaff and Northern Arizona University.

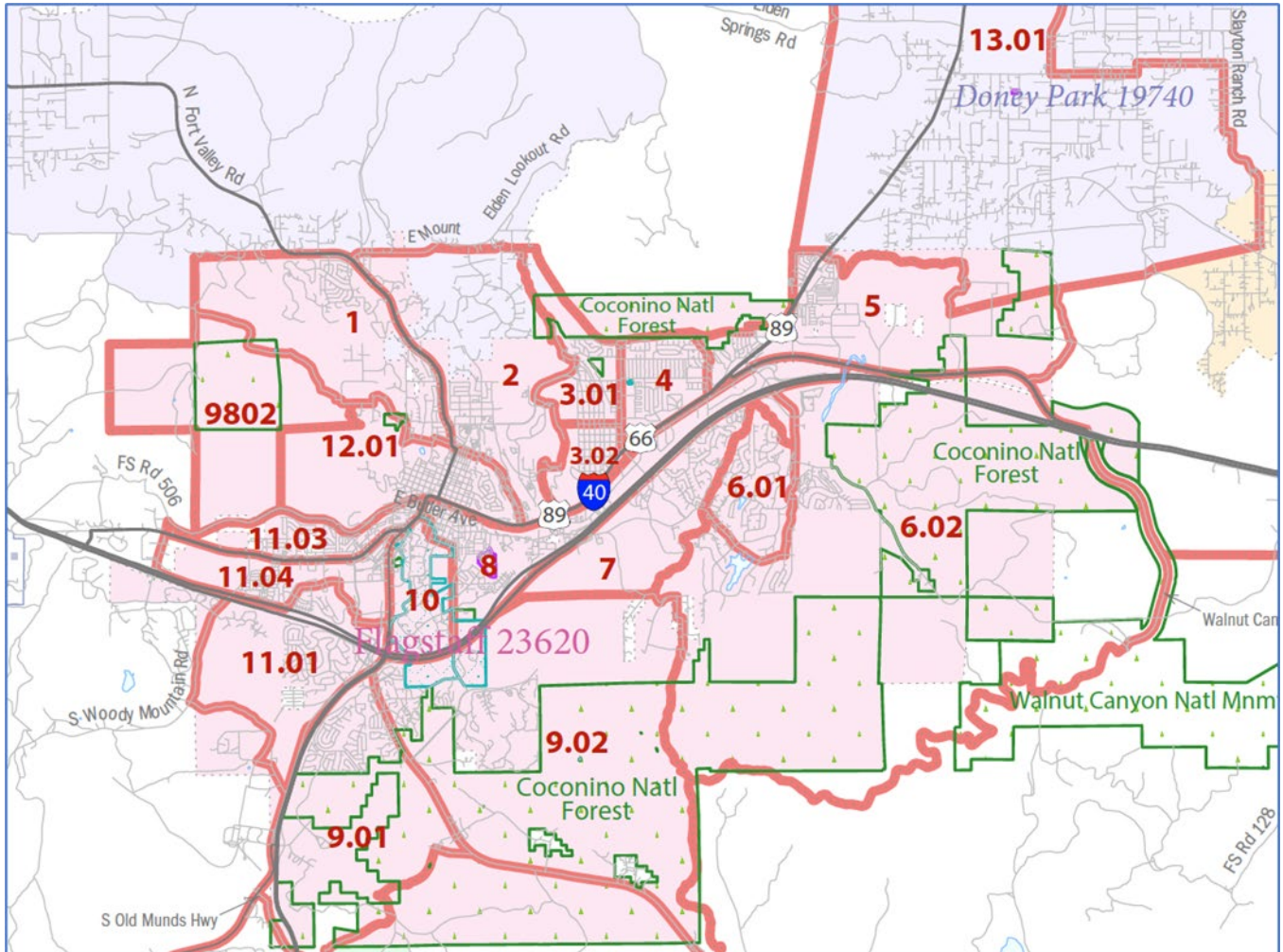


This map depicts the 4-minute “first-due” travel time coverage from the 7 notional “clean slate” fire stations.



This map depicts the 8-minute effective firefighting force (EFF) coverage from the 7 notional "clean slate" fire stations.

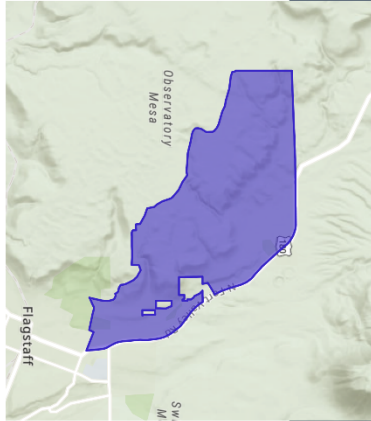
APPENDIX E: City of Flagstaff At-Risk Population, by Census Tract



AT RISK POPULATION PROFILE

Census Tract 1

Area: 3.25 square miles



Population	3,842	Households	1,472	Avg Size Household	2.60	Median Age	42.7	Median Household Income	\$120,343	Median Home Value	\$418,240	Wealth Index	186	Housing Affordability	141	Diversity Index	47
------------	-------	------------	-------	--------------------	------	------------	------	-------------------------	-----------	-------------------	-----------	--------------	-----	-----------------------	-----	-----------------	----

AT RISK POPULATION

Households With Disability	400	Population 65+	732	Households Without Vehicle	10
----------------------------	-----	----------------	-----	----------------------------	----

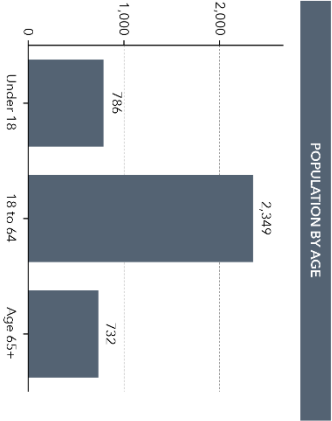
POVERTY AND LANGUAGE

Households Below the Poverty Level	7%	Households Below the Poverty Level	91	Pop 65+ Speak Spanish & No English	0
------------------------------------	----	------------------------------------	----	------------------------------------	---

POPULATION AND BUSINESSES

Daytime Population	2,503	Total Businesses	42	Total Employees	309
--------------------	-------	------------------	----	-----------------	-----

Language Spoken (ACS)	Age 5-17	18-64	Age 65+	Total
English Only	631	1,895	555	3,081
Spanish	22	104	23	149
Spanish & English Well	15	104	23	142
Spanish & English Not Well	7	0	0	7
Spanish & No English	0	0	0	0
Indo-European	0	7	12	19
Indo-European & English Well	0	7	12	19
Indo-European & English Not Well	0	0	0	0
Indo-European & No English	0	0	0	0
Asian-Pacific Island	0	0	0	0
Asian-Pacific Isl & English Well	0	0	0	0
Asian-Pacific Isl & English Not Well	0	0	0	0
Asian-Pacific Isl & No English	0	0	0	0
Other Language	0	16	0	16
Other Language & English Well	0	15	0	15
Other Language & English Not Well	0	1	0	1
Other Language & No English	0	0	0	0



Source: Est. ACS, Esri-DemAble, Esri Forecast for 2022, 2027, 2016-2020.

© 2022 Esri

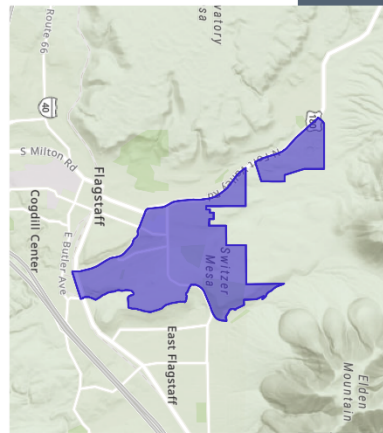


AT RISK POPULATION PROFILE

Census Tract 2

Area: 2.5 square miles

Population: **4,002** Households: **1,835** Avg Size Household: **2.15** Median Age: **34.1** Median Household Income: **\$79,919** Median Home Value: **\$402,874** Wealth Index: **74** Housing Affordability: **97** Diversity Index: **56**



AT RISK POPULATION

339 Households With Disability

567 Population 65+

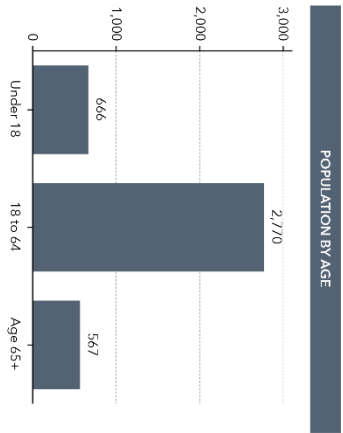
94 Households Without Vehicle

POVERTY AND LANGUAGE

11% Households Below the Poverty Level

173 Households Below the Poverty Level

0 Pop 65+ Speak Spanish & No English



POPULATION AND BUSINESSES

6,166 Daytime Population

241 Total Businesses

4,788 Total Employees

Language Spoken (ACS)	Age 5-17	18-64	Age 65+	Total
English Only	679	1,765	547	2,991
Spanish	0	62	13	75
Spanish & English Well	0	62	13	75
Spanish & English Not Well	0	0	0	0
Spanish & No English	0	0	0	0
Indo-European	0	31	9	40
Indo-European & English Well	0	31	9	40
Indo-European & English Not Well	0	0	0	0
Indo-European & No English	0	0	0	0
Asian-Pacific Island	7	29	0	36
Asian-Pacific Isl & English Well	7	29	0	36
Asian-Pacific Isl & English Not Well	0	0	0	0
Asian-Pacific Isl & No English	0	0	0	0
Other Language	0	123	9	132
Other Language & English Well	0	112	6	118
Other Language & English Not Well	0	11	3	14
Other Language & No English	0	0	0	0

Source: Esri, ACS, EsriData.com, Esri forecasts for 2022, 2023, 2014-2020

© 2022 Esri



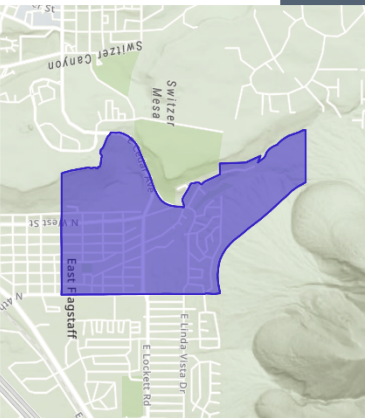


AT RISK POPULATION PROFILE

Census Tract 3.01



Area: 0.96 square miles



Population	4,028	Households	1,437	Avg Size Household	2.75	Median Age	29.2	Median Household Income	\$52,661	Median Home Value	\$421,935	Wealth Index	72	Housing Affordability	61	Diversity Index	83
------------	-------	------------	-------	--------------------	------	------------	------	-------------------------	----------	-------------------	-----------	--------------	----	-----------------------	----	-----------------	----

AT RISK POPULATION

Households With Disability	192	Population 65+	416	Households Without Vehicle	62
----------------------------	-----	----------------	-----	----------------------------	----

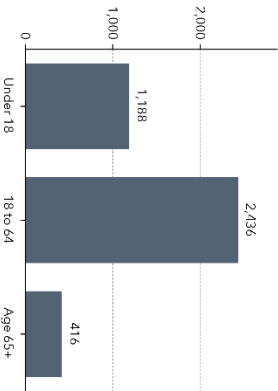
POVERTY AND LANGUAGE

Households Below the Poverty Level	21%	Households Below the Poverty Level	263	Pop 65+ Speak Spanish & No English	0
------------------------------------	-----	------------------------------------	-----	------------------------------------	---

POPULATION AND BUSINESSES

Daytime Population	4,027	Total Businesses	192	Total Employees	1,932
--------------------	-------	------------------	-----	-----------------	-------

Language Spoken (ACS)	Age 5-17	18-64	Age 65+	Total
English Only	306	1,360	222	1,888
Spanish	10	266	82	358
Spanish & English Well	10	233	71	314
Spanish & English Not Well	0	33	11	44
Spanish & No English	0	0	0	0
Indo-European	0	8	0	8
Indo-European & English Well	0	8	0	8
Indo-European & English Not Well	0	0	0	0
Indo-European & No English	0	0	0	0
Asian-Pacific Island	0	0	0	0
Asian-Pacific Isl & English Well	0	0	0	0
Asian-Pacific Isl & English Not Well	0	0	0	0
Asian-Pacific Isl & No English	0	0	0	0
Other Language	345	218	0	563
Other Language & English Well	159	218	0	377
Other Language & English Not Well	186	0	0	186
Other Language & No English	0	0	0	0

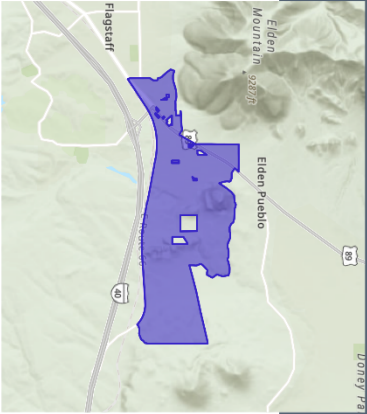


Source: Esri, ACS, Esri Data Made, Esri forecasts for 2022, 2017, 2016-2020.

© 2022 Esri







AT RISK POPULATION PROFILE

Census Tract 5

Area: 3.8 square miles



Population	5,074	Households	1,851	Avg Size Household	2.71	Median Age	32.9	Median Household Income	\$69,013	Median Home Value	\$293,686	Wealth Index	61	Housing Affordability	114	Diversity Index	82
------------	-------	------------	-------	--------------------	------	------------	------	-------------------------	----------	-------------------	-----------	--------------	----	-----------------------	-----	-----------------	----

AT RISK POPULATION

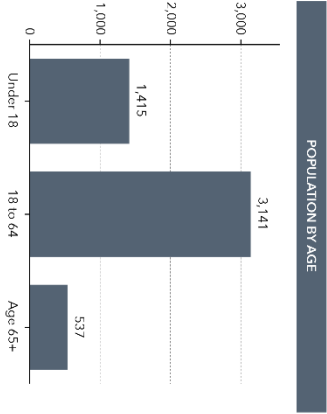
Households With Disability	367	Population 65+	537	Households Without Vehicle	28
----------------------------	-----	----------------	-----	----------------------------	----

POVERTY AND LANGUAGE

Households Below the Poverty Level	15%	Households Below the Poverty Level	227	Pop 65+ Speak Spanish & No English	0
------------------------------------	-----	------------------------------------	-----	------------------------------------	---

POPULATION AND BUSINESSES

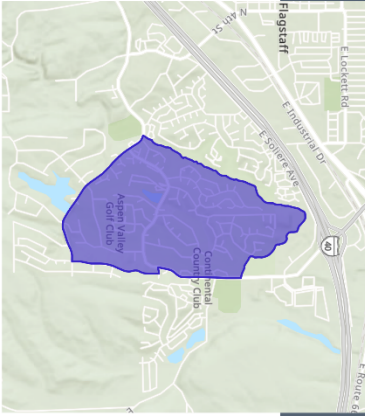
Daytime Population	5,368	Total Businesses	225	Total Employees	3,193
--------------------	-------	------------------	-----	-----------------	-------



Language Spoken (ACS)	Age 5-17			Age 18-64			Age 65+			Total
	English Only	Spanish	Spanish & English Well	Spanish & English Not Well	Spanish & No English	Indo-European	Indo-European & English Well	Indo-European & English Not Well	Indo-European & No English	
English Only	609	2,098	284	2,991	0	6	0	6	0	6
Spanish	70	483	18	571	0	6	0	6	0	6
Spanish & English Well	0	403	18	491	0	0	0	0	0	0
Spanish & English Not Well	0	48	0	48	0	0	0	0	0	0
Spanish & No English	0	32	0	32	0	0	0	0	0	0
Indo-European	0	6	0	6	0	6	0	6	0	6
Indo-European & English Well	0	0	0	0	0	6	0	6	0	6
Indo-European & English Not Well	0	0	0	0	0	0	0	0	0	0
Indo-European & No English	0	0	0	0	0	0	0	0	0	0
Asian-Pacific Island	0	10	0	10	0	0	0	0	0	10
Asian-Pacific Isl & English Well	0	10	0	10	0	0	0	0	0	10
Asian-Pacific Isl & English Not Well	0	0	0	0	0	0	0	0	0	0
Asian-Pacific Isl & No English	0	0	0	0	0	0	0	0	0	0
Other Language	0	52	5	57	0	52	5	57	0	57
Other Language & English Well	0	17	5	22	0	17	5	22	0	22
Other Language & English Not Well	0	35	0	35	0	35	0	35	0	35
Other Language & No English	0	0	0	0	0	0	0	0	0	0

Source: Esri, ACS, Esri Data Analyst, Esri Forecast for 2022-2027, 2018-2020

© 2022 Esri



AT RISK POPULATION PROFILE

Census Tract 6.01

Area: 1.23 square miles



Population	2,108	Households	906	Avg Size Household	2.31	Median Age	54.3	Median Household Income	\$103,067	Median Home Value	\$463,004	Wealth Index	151	Housing Affordability	108	Diversity Index	43
------------	-------	------------	-----	--------------------	------	------------	------	-------------------------	-----------	-------------------	-----------	--------------	-----	-----------------------	-----	-----------------	----

AT RISK POPULATION

Households With Disability	147	Population 65+	534	Households Without Vehicle	19
----------------------------	-----	----------------	-----	----------------------------	----

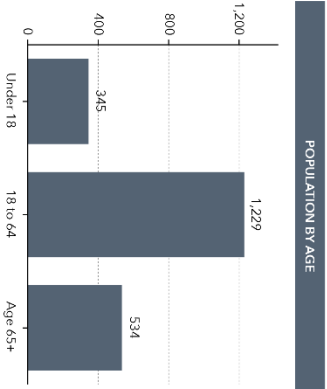
POVERTY AND LANGUAGE

Households Below the Poverty Level	2%	Households Below the Poverty Level	18	Pop 65+ Speak Spanish & No English	0
------------------------------------	----	------------------------------------	----	------------------------------------	---

POPULATION AND BUSINESSES

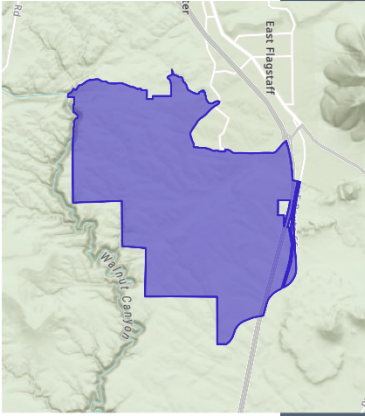
Daytime Population	1,339	Total Businesses	32	Total Employees	323
--------------------	-------	------------------	----	-----------------	-----

Language Spoken (ACS)	Age 5-17	18-64	Age 65+	Total
English Only	246	1,389	427	2,062
Spanish	0	18	30	48
Spanish & English Well	0	18	30	48
Spanish & English Not Well	0	0	0	0
Spanish & No English	0	0	0	0
Indo-European	0	0	0	0
Indo-European & English Well	0	0	0	0
Indo-European & English Not Well	0	0	0	0
Indo-European & No English	0	0	0	0
Asian-Pacific Island	22	40	0	62
Asian-Pacific Isl & English Well	22	40	0	62
Asian-Pacific Isl & English Not Well	0	0	0	0
Asian-Pacific Isl & No English	0	0	0	0
Other Language	0	0	0	0
Other Language & English Well	0	0	0	0
Other Language & English Not Well	0	0	0	0
Other Language & No English	0	0	0	0



Source: Esri, ACS, Esri Data Analytics, Esri forecasts to 2022, 2027, 2016, 2020

© 2022 Esri



AT RISK POPULATION PROFILE

Census Tract 6.02

Area: 15.55 square miles



Population	3,443	Households	1,513	Avg Size Household	2.28	Median Age	34.0	Median Household Income	\$80,549	Median Home Value	\$495,531	Wealth Index	139	Housing Affordability	77	Diversity Index	60
------------	-------	------------	-------	--------------------	------	------------	------	-------------------------	----------	-------------------	-----------	--------------	-----	-----------------------	----	-----------------	----

AT RISK POPULATION

Households With Disability	460	Population 65+	507	Households Without Vehicle	0
----------------------------	-----	----------------	-----	----------------------------	---

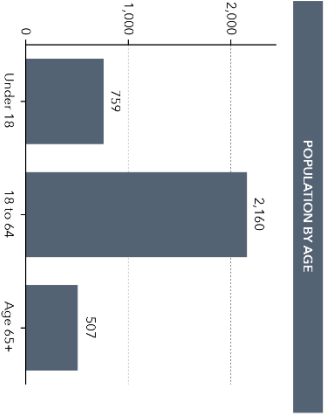
POVERTY AND LANGUAGE

Households Below the Poverty Level	8%	Households Below the Poverty Level	97	Pop 65+ Speak Spanish & No English	0
------------------------------------	----	------------------------------------	----	------------------------------------	---

POPULATION AND BUSINESSES

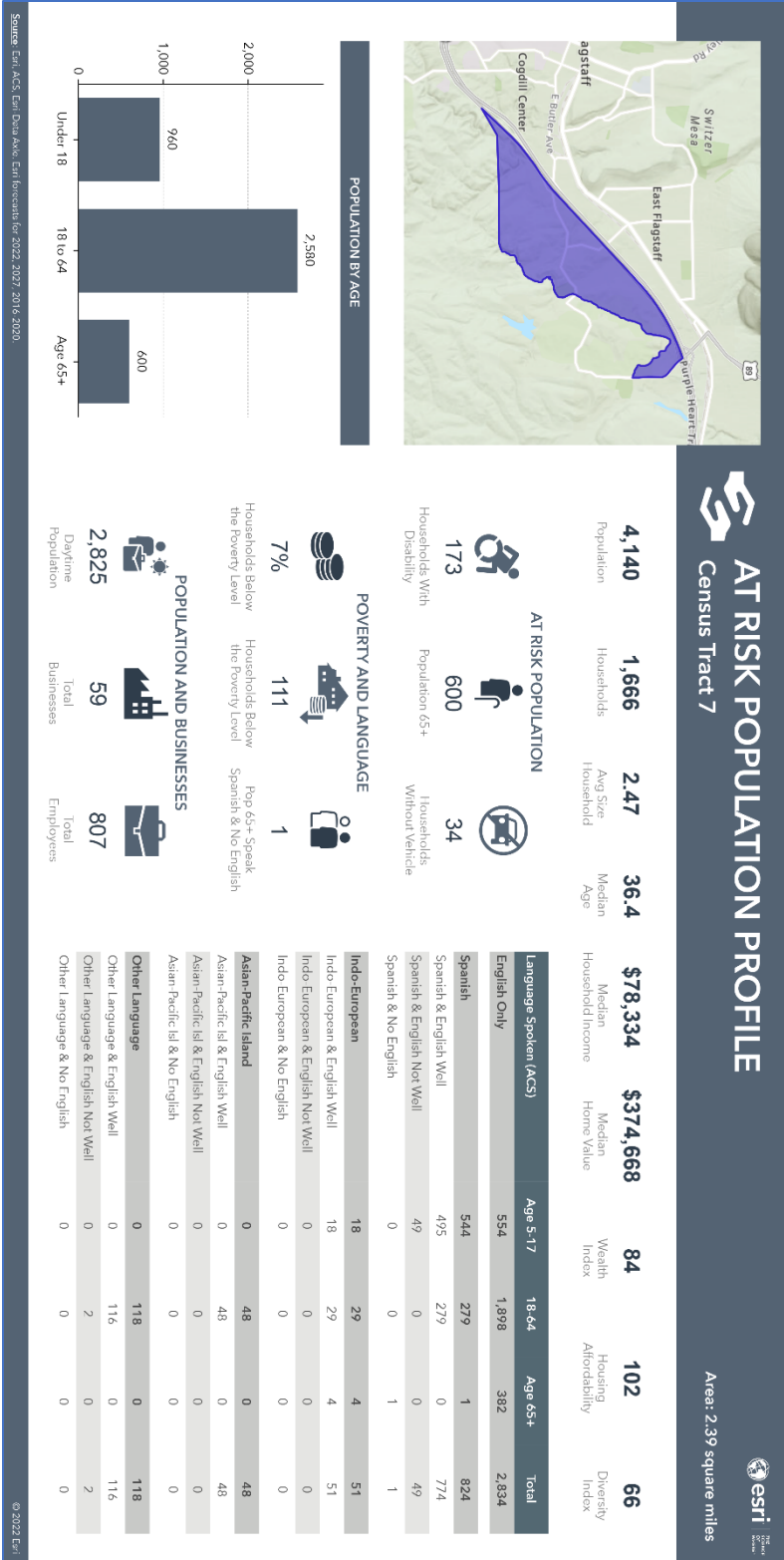
Daytime Population	2,585	Total Businesses	70	Total Employes	821
--------------------	-------	------------------	----	----------------	-----

Language Spoken (ACS)	Age 5-17	18-64	Age 65+	Total
English Only	484	1,584	578	2,646
Spanish	0	7	0	7
Spanish & English Well	0	7	0	7
Spanish & English Not Well	0	0	0	0
Spanish & No English	0	0	0	0
Indo-European	16	120	0	136
Indo-European & English Well	16	105	0	121
Indo-European & English Not Well	0	16	0	16
Indo-European & No English	0	0	0	0
Asian-Pacific Island	0	0	0	0
Asian-Pacific Isl & English Well	0	0	0	0
Asian-Pacific Isl & English Not Well	0	0	0	0
Asian-Pacific Isl & No English	0	0	0	0
Other Language	0	49	14	63
Other Language & English Well	0	49	0	49
Other Language & English Not Well	0	0	7	7
Other Language & No English	0	0	7	7



Source: Esri, ACS, Esri Data Analytics, Esri forecasts to 2022, 2021, 2016, 2010

© 2022 Esri

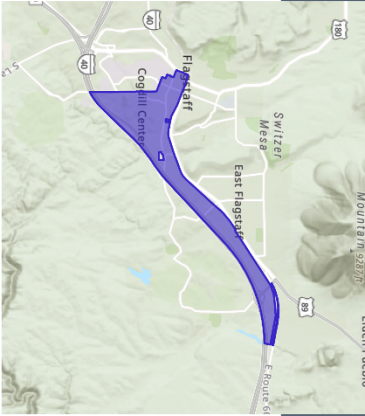




AT RISK POPULATION PROFILE

Census Tract 8

Area: 2.44 square miles



6,452 Population
2,444 Households
2.38 Avg Size Household
26.0 Median Age
\$37,895 Median Household Income
\$345,144 Median Home Value
31 Wealth Index
52 Housing Affordability
74 Diversity Index

AT RISK POPULATION

399 Households With Disability
477 Population 65+
166 Households Without Vehicle

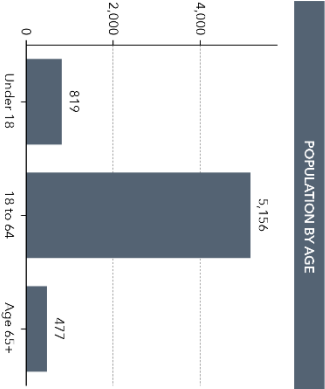
POVERTY AND LANGUAGE

39% Households Below the Poverty Level
855 Households Below the Poverty Level
0 Pop 65+ Speak Spanish & No English

POPULATION AND BUSINESSES

9,311 Daytime Population
501 Total Businesses
7,236 Total Employees

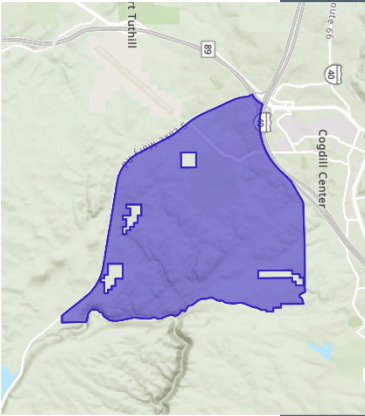
Language Spoken (ACS)	Age 5-17	18-64	Age 65+	Total
English Only	384	4,749	137	5,270
Spanish	22	232	80	334
Spanish & English Well	22	202	64	288
Spanish & English Not Well	0	30	16	46
Spanish & No English	0	0	0	0
Indo-European	7	105	0	112
Indo-European & English Well	7	105	0	112
Indo-European & English Not Well	0	0	0	0
Indo-European & No English	0	0	0	0
Asian-Pacific Island	0	68	0	68
Asian-Pacific Isl & English Well	0	68	0	68
Asian-Pacific Isl & English Not Well	0	0	0	0
Asian Pacific Isl & No English	0	0	0	0
Other Language	0	425	47	472
Other Language & English Well	0	414	47	461
Other Language & English Not Well	0	11	0	11
Other Language & No English	0	0	0	0



Source: Esri, ACS, EsriData Kyle, Esri forecasts for 2022, 2017, 2016, 2020

© 2022 Esri





AT RISK POPULATION PROFILE

Census Tract 9.02

Area: 9.29 square miles

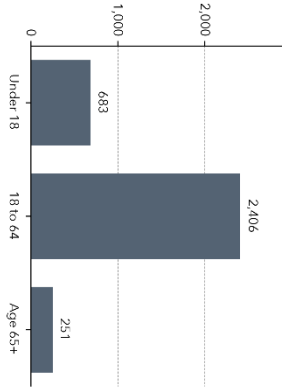


Population	3,340	Households	1,396	Avg Size Household	2.39	Median Age	26.5	Median Household Income	\$45,868	Median Home Value	\$531,250	Wealth Index	54	Housing Affordability	43	Diversity Index	72
------------	-------	------------	-------	--------------------	------	------------	------	-------------------------	----------	-------------------	-----------	--------------	----	-----------------------	----	-----------------	----

AT RISK POPULATION

Households With Disability	267	Population 65+	251	Households Without Vehicle	102
----------------------------	-----	----------------	-----	----------------------------	-----

POPULATION BY AGE



POVERTY AND LANGUAGE

Households Below the Poverty Level	25%	Households Below the Poverty Level	264	Pop 65+ Speak Spanish & No English	0
------------------------------------	-----	------------------------------------	-----	------------------------------------	---

POPULATION AND BUSINESSES

Daytime Population	2,229	Total Businesses	28	Total Employers	446
--------------------	-------	------------------	----	-----------------	-----

Language Spoken (ACS)	Age 5-17	18-64	Age 65+	Total
English Only	233	1,474	130	1,837
Spanish	54	85	24	163
Spanish & English Well	54	85	24	163
Spanish & English Not Well	0	0	0	0
Spanish & No English	0	0	0	0
Indo-European	0	11	0	11
Indo-European & English Well	0	11	0	11
Indo-European & English Not Well	0	0	0	0
Indo-European & No English	0	0	0	0
Asian-Pacific Island	0	3	0	3
Asian-Pacific Isl & English Well	0	3	0	3
Asian-Pacific Isl & English Not Well	0	0	0	0
Asian-Pacific Isl & No English	0	0	0	0
Other Language	0	47	0	47
Other Language & English Well	0	47	0	47
Other Language & English Not Well	0	0	0	0
Other Language & No English	0	0	0	0

Source: Esri, ACS, Esri-Data-Angle, Esri-forecast for 2022, 2020, 2010 to 2020

© 2022 Esri

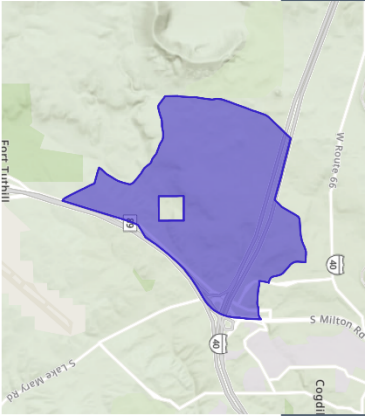




AT RISK POPULATION PROFILE

Census Tract 11.01

Area: 2.79 square miles



Population	5,293	Houses	2,133	Avg Size Household	2.47	Median Age	31.8	Median Household Income	\$77,984	Median Home Value	\$415,625	Wealth Index	83	Housing Affordability	91	Diversity Index	52
------------	-------	--------	-------	--------------------	------	------------	------	-------------------------	----------	-------------------	-----------	--------------	----	-----------------------	----	-----------------	----

AT RISK POPULATION

Households With Disability	231	Population 65+	580	Households Without Vehicle	45
----------------------------	-----	----------------	-----	----------------------------	----

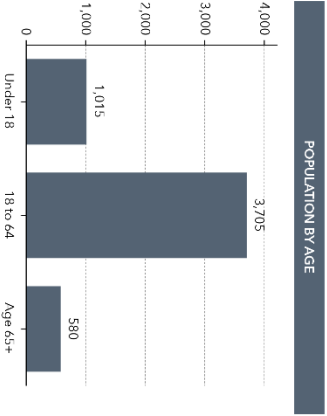
POVERTY AND LANGUAGE

Households Below the Poverty Level	24%	Households Below the Poverty Level	440	Pop 65+ Speak Spanish & No English	0
------------------------------------	-----	------------------------------------	-----	------------------------------------	---

POPULATION AND BUSINESSES

Daytime Population	4,189	Total Businesses	102	Total Employees	1,484
--------------------	-------	------------------	-----	-----------------	-------

Language Spoken (ACS)	Age 5-17	18-64	Age 65+	Total
English Only	689	2,728	291	3,708
Spanish	0	193	57	250
Spanish & English Well	0	193	57	250
Spanish & English Not Well	0	0	0	0
Spanish & No English	0	0	0	0
Indo-European	18	94	0	112
Indo-European & English Well	18	75	0	93
Indo-European & English Not Well	0	19	0	19
Indo-European & No English	0	0	0	0
Asian-Pacific Island	0	130	4	134
Asian-Pacific Isl & English Well	0	130	0	130
Asian-Pacific Isl & English Not Well	0	0	4	4
Asian Pacific Isl & No English	0	0	0	0
Other Language	0	15	0	15
Other Language & English Well	0	14	0	14
Other Language & English Not Well	0	1	0	1
Other Language & No English	0	0	0	0



Source: ERM ACS, ERM Data Kite, ERM forecasts for 2022, 2027, 2016, 2020

© 2022 ERM

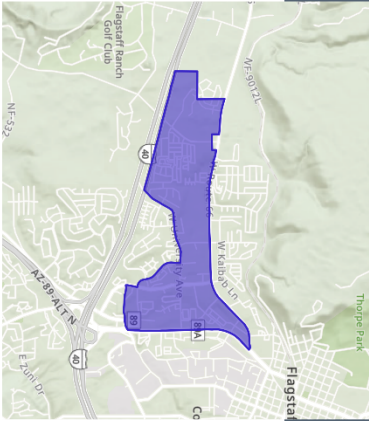




AT RISK POPULATION PROFILE

Census Tract 11.04

Area: 1.13 square miles



Population	5,129	Households	2,251	Avg Size Household	2.20	Median Age	29.0	Median Household Income	\$43,465	Median Home Value	\$423,469	Wealth Index	45	Housing Affordability	50	Diversity Index	64
------------	-------	------------	-------	--------------------	------	------------	------	-------------------------	----------	-------------------	-----------	--------------	----	-----------------------	----	-----------------	----

AT RISK POPULATION

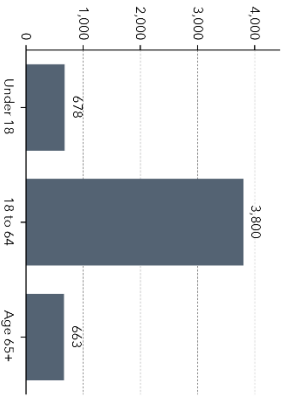
Households With Disability	253	Population 65+	663	Households Without Vehicle	57
----------------------------	-----	----------------	-----	----------------------------	----

POVERTY AND LANGUAGE

Households Below the Poverty Level	29%	Households Below the Poverty Level	418	Pop 65+ Speak Spanish & No English	0
------------------------------------	-----	------------------------------------	-----	------------------------------------	---

POPULATION AND BUSINESSES

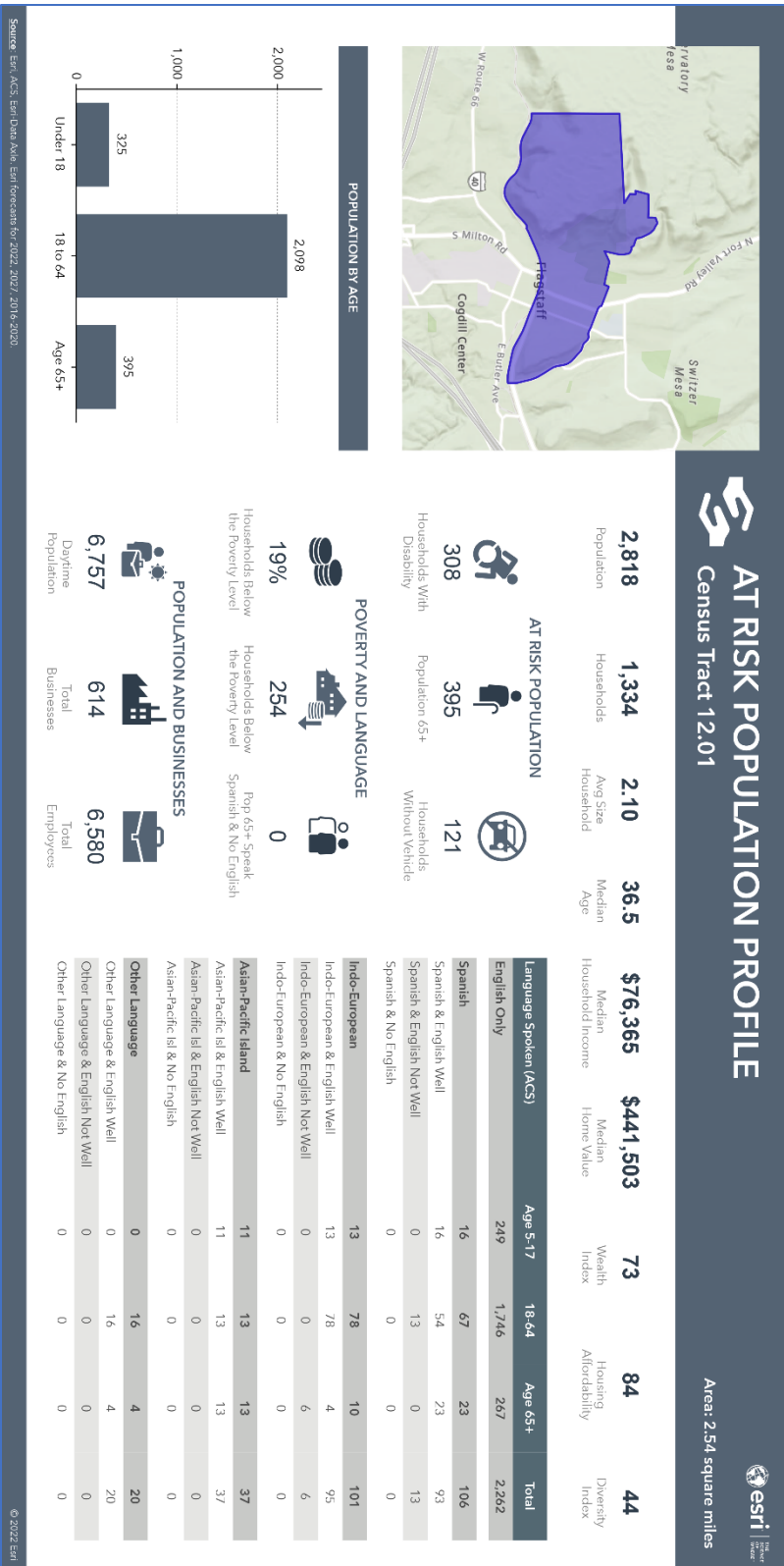
Daytime Population	6,426	Total Businesses	303	Total Employees	4,429
--------------------	-------	------------------	-----	-----------------	-------



Language Spoken (ACS)	Age 5-17	18-64	Age 65+	Total
English Only	234	2,554	205	2,993
Spanish	0	9	4	13
Spanish & English Well	0	9	4	13
Spanish & English Not Well	0	0	0	0
Spanish & No English	0	0	0	0
Indo-European	14	192	5	211
Indo-European & English Well	14	171	5	190
Indo-European & English Not Well	0	21	0	21
Indo-European & No English	0	0	0	0
Asian-Pacific Island	0	143	39	182
Asian-Pacific Is & English Well	0	112	0	112
Asian-Pacific Is & English Not Well	0	31	39	70
Asian-Pacific Is & No English	0	0	0	0
Other Language	0	56	23	79
Other Language & English Well	0	56	4	60
Other Language & English Not Well	0	0	4	4
Other Language & No English	0	0	15	15

Source: Esri, ACS, Esri-Data-Ann. Esri Forecast for 2022, 2027, 2016-2020

© 2022 Esri



Source: Esri, ACS, Esri Data Analytics, Esri forecasts to 2022, 2007, 2010, 2020

© 2022 Esri

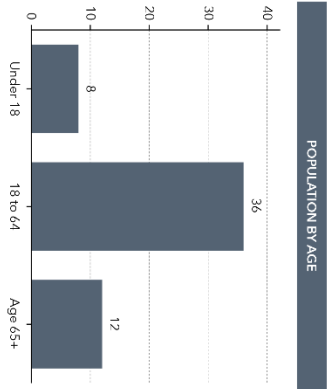
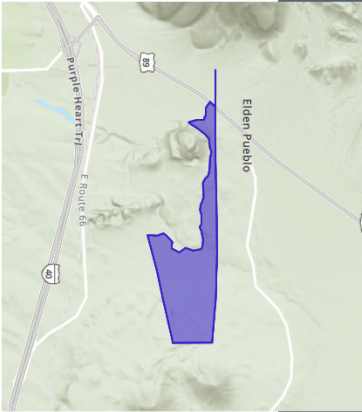


AT RISK POPULATION PROFILE

Census Tract 13.01



Area: 0.84 square miles



51 Population
16 Households
3.19 Avg Size Household
48.8 Median Age

AT RISK POPULATION

- 5** Households With Disability
- 12** Population 65+
- 1** Households Without Vehicle

POVERTY AND LANGUAGE

- 13%** Households Below the Poverty Level
- 2** Households Below the Poverty Level
- 0** Pop 65+ Speak Spanish & No English

POPULATION AND BUSINESSES

- 58** Daytime Population
- 3** Total Businesses
- 26** Total Employees

Language Spoken (ACS)	Age 5-17	18-64	Age 65+	Total
English Only	7	23	10	40
Spanish	1	3	0	4
Spanish & English Well	1	3	0	4
Spanish & English Not Well	0	0	0	0
Spanish & No English	0	0	0	0
Indo-European	0	0	0	0
Indo-European & English Well	0	0	0	0
Indo-European & English Not Well	0	0	0	0
Indo-European & No English	0	0	0	0
Asian-Pacific Island	0	0	0	0
Asian-Pacific Isl & English Well	0	0	0	0
Asian-Pacific Isl & English Not Well	0	0	0	0
Asian-Pacific Isl & No English	0	0	0	0
Other Language	0	0	0	0
Other Language & English Well	0	0	0	0
Other Language & English Not Well	0	0	0	0
Other Language & No English	0	0	0	0

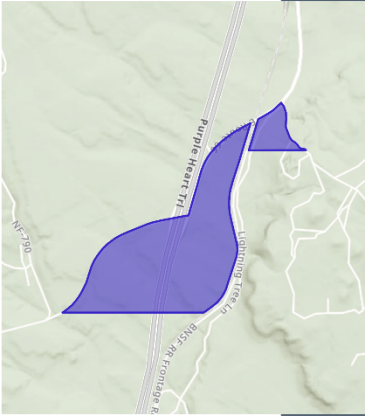
Source: Esri, ACS, Esri Data Analytics, Esri forecasts for 2022-2027, 2014-2020. © 2022 Esri





AT RISK POPULATION PROFILE

Area: 0.62 square miles

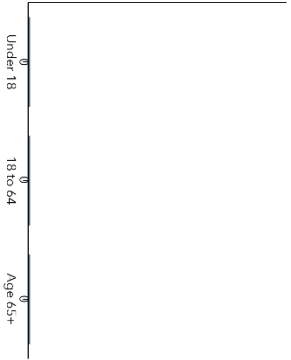


Population	6	Households	2	Avg Size Household	3.00	Median Age	65.0	Median Household Income	\$62,500	Median Home Value	\$350,000	Wealth Index	77	Housing Affordability	0	Diversity Index	66
------------	---	------------	---	--------------------	------	------------	------	-------------------------	----------	-------------------	-----------	--------------	----	-----------------------	---	-----------------	----

AT RISK POPULATION

Households With Disability	0	Population 65+	0	Households Without Vehicle	0
----------------------------	---	----------------	---	----------------------------	---

POPULATION BY AGE



POVERTY AND LANGUAGE

Households Below the Poverty Level	0%	Households Below the Poverty Level	0	Pop 65+ Speak Spanish & No English	0
------------------------------------	----	------------------------------------	---	------------------------------------	---

POPULATION AND BUSINESSES

Daytime Population	3	Total Businesses	0	Total Employeess	0
--------------------	---	------------------	---	------------------	---

Language Spoken (ACS)	Age 5-17		18-64		Age 65+		Total
	1	2	1	2	1	2	
English Only	1	0	0	0	0	0	3
Spanish	0	0	0	0	0	0	0
Spanish & English Well	0	0	0	0	0	0	0
Spanish & English Not Well	0	0	0	0	0	0	0
Spanish & No English	0	0	0	0	0	0	0
Indo-European	0	0	0	0	0	0	0
Indo-European & English Well	0	0	0	0	0	0	0
Indo-European & English Not Well	0	0	0	0	0	0	0
Indo-European & No English	0	0	0	0	0	0	0
Asian-Pacific Island	0	0	0	0	0	0	0
Asian-Pacific Isl & English Well	0	0	0	0	0	0	0
Asian-Pacific Isl & English Not Well	0	0	0	0	0	0	0
Asian Pacific Isl & No English	0	0	0	0	0	0	0
Other Language	0	1	0	0	0	0	1
Other Language & English Well	0	1	0	0	0	0	1
Other Language & English Not Well	0	0	0	0	0	0	0
Other Language & No English	0	0	0	0	0	0	0

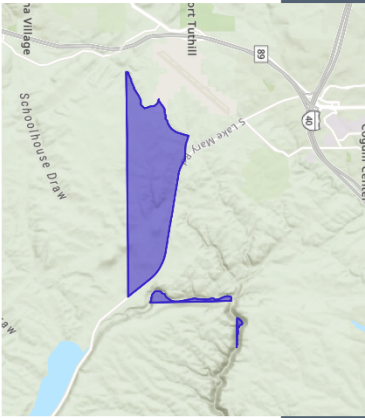
Source: Esri, ACS, Esri/Dea Kyle, Esri/Forecasts for 2022, 2017, 2016, 2020

© 2022 Esri



AT RISK POPULATION PROFILE

Area: 2.92 square miles

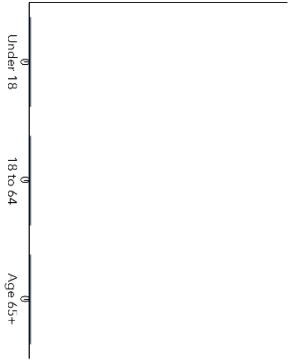


Population	3	Houses	0	Avg Size Household	0.00	Median Age	0.0	Median Household Income	\$0	Median Home Value	\$0	Wealth Index	0	Housing Affordability	0	Diversity Index	44
------------	---	--------	---	--------------------	------	------------	-----	-------------------------	-----	-------------------	-----	--------------	---	-----------------------	---	-----------------	----

AT RISK POPULATION

Households With Disability	0	Population 65+	0	Households Without Vehicle	0
----------------------------	---	----------------	---	----------------------------	---

POPULATION BY AGE



POVERTY AND LANGUAGE

Households Below the Poverty Level	0%	Households Below the Poverty Level	0	Pop 65+ Speak Spanish & No English	0
------------------------------------	----	------------------------------------	---	------------------------------------	---

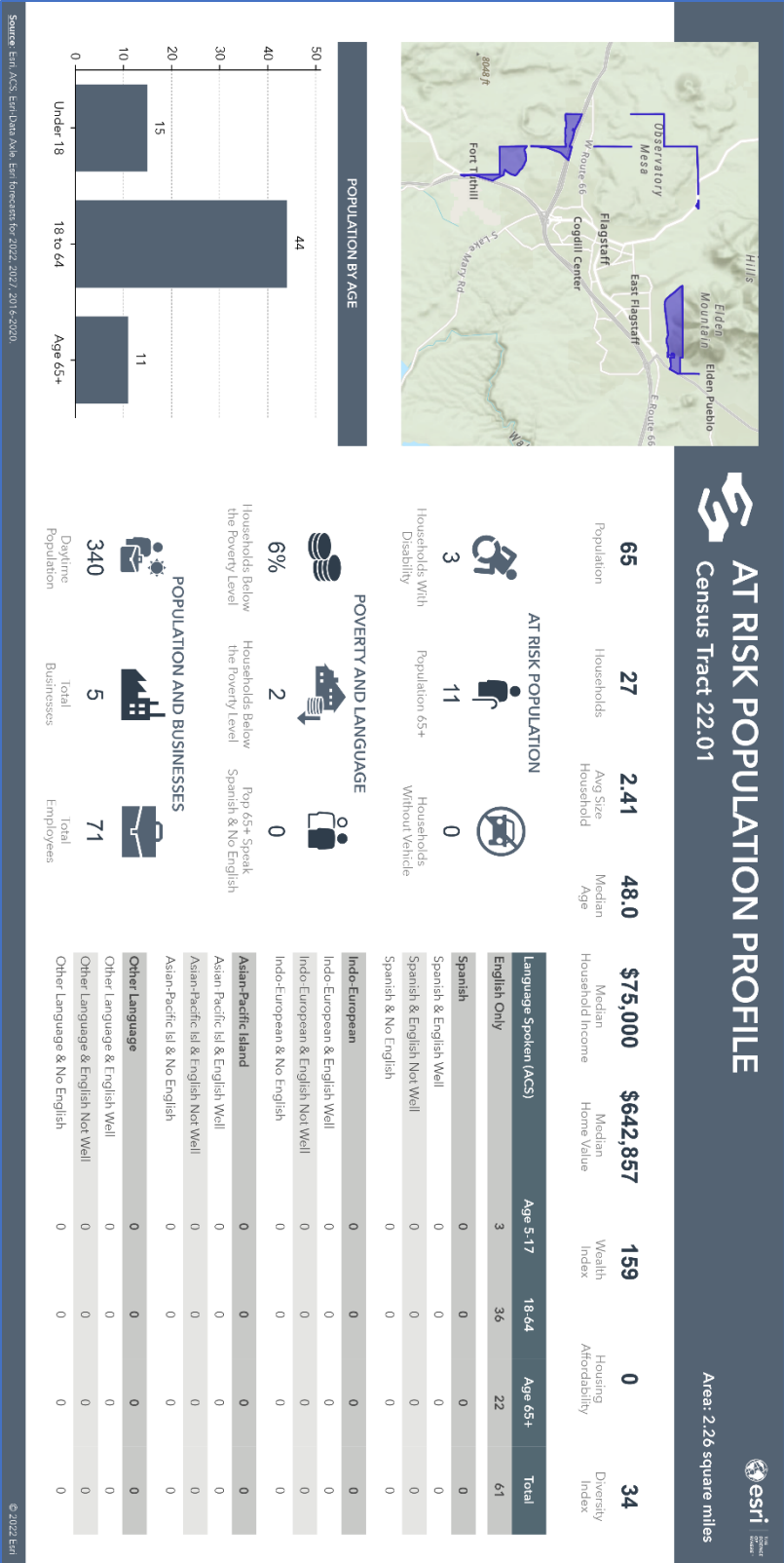
POPULATION AND BUSINESSES

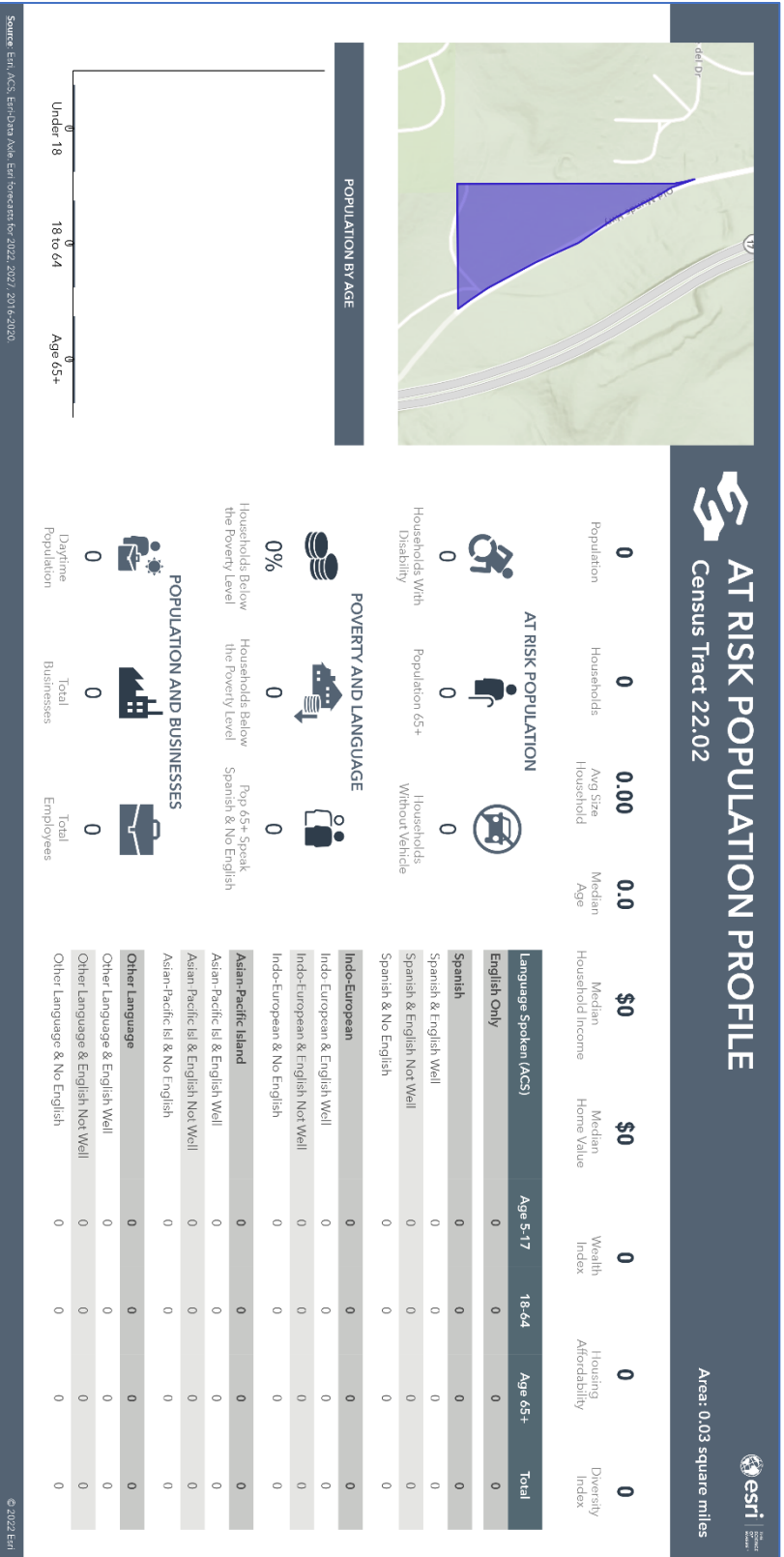
Daytime Population	1	Total Businesses	0	Total Employeess	0
--------------------	---	------------------	---	------------------	---

Language Spoken (ACS)	Age 5-17	18-64	Age 65+	Total
English Only	0	1	1	2
Spanish	0	0	0	0
Spanish & English Well	0	0	0	0
Spanish & English Not Well	0	0	0	0
Spanish & No English	0	0	0	0
Indo-European	0	0	0	0
Indo-European & English Well	0	0	0	0
Indo-European & English Not Well	0	0	0	0
Indo-European & No English	0	0	0	0
Asian-Pacific Island	0	0	0	0
Asian-Pacific Isl & English Well	0	0	0	0
Asian-Pacific Isl & English Not Well	0	0	0	0
Asian Pacific Isl & No English	0	0	0	0
Other Language	0	0	0	0
Other Language & English Well	0	0	0	0
Other Language & English Not Well	0	0	0	0
Other Language & No English	0	0	0	0

Source: Esri, ACS, Esri/Dea Kyle, Esri forecasts for 2022, 2017, 2016, 2020

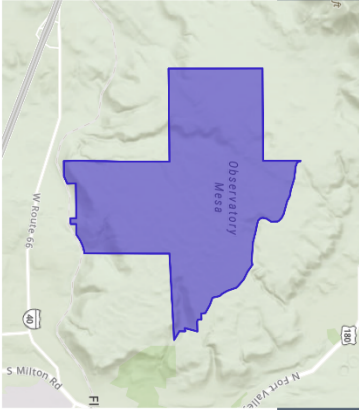
© 2022 Esri





AT RISK POPULATION PROFILE

Area: 3.66 square miles



Population: 0
 Households: 0
 Avg Size Household: 0.00
 Median Age: 0.0

Median Household Income: \$0
 Median Home Value: \$0
 Wealth Index: 0
 Housing Affordability: 0
 Diversity Index: 0

AT RISK POPULATION

Households With Disability: 0
 Population 65+: 0
 Households Without Vehicle: 0

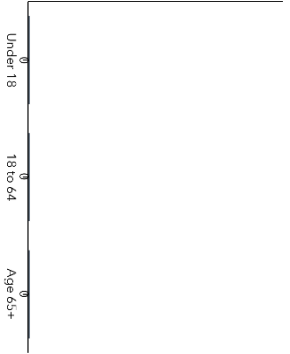
POVERTY AND LANGUAGE

Households Below the Poverty Level: 0%
 Households Below the Poverty Level: 0
 Top 65+ Speak Spanish & No English: 0

POPULATION AND BUSINESSES

Daytime Population: 0
 Total Businesses: 0
 Total Employees: 0

Language Spoken (ACS)	Age 5-17	18-64	Age 65+	Total
English Only	0	0	0	0
Spanish	0	0	0	0
Spanish & English Well	0	0	0	0
Spanish & English Not Well	0	0	0	0
Spanish & No English	0	0	0	0
Indo-European	0	0	0	0
Indo-European & English Well	0	0	0	0
Indo-European & English Not Well	0	0	0	0
Indo-European & No English	0	0	0	0
Asian-Pacific Island	0	0	0	0
Asian-Pacific Isl & English Well	0	0	0	0
Asian-Pacific Isl & English Not Well	0	0	0	0
Asian-Pacific Isl & No English	0	0	0	0
Other Language	0	0	0	0
Other Language & English Well	0	0	0	0
Other Language & English Not Well	0	0	0	0
Other Language & No English	0	0	0	0



Source: Esri, ArcGIS Desktop, Esri, Forecasts for 2012, 2017, 2018, 2020

© 2022 Esri