



The Ranch Mine LLC
 4340 E Indian School Rd.
 Suite 21552
 Phoenix, AZ 85018

480.399.5990
 info@theranchmine.com
 www.theranchmine.com

PINE CANYON-361
 Lot 361 Woodland Hills Drive
 Flagstaff, AZ 86005



phase:
 Construction Documents

date of issue:
 03.08.2023

rev no, date, description:
 4 03.02.2023 Final Design Review
 Comments

sheet contents:
 elevations

sheet no:

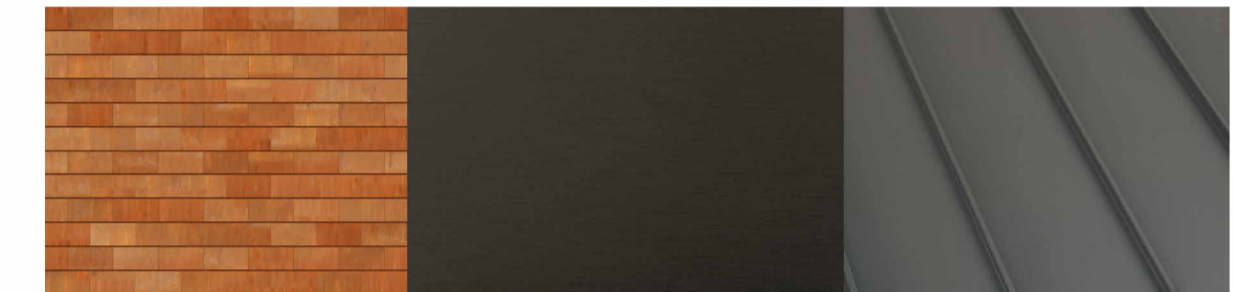
A-200

ELEVATION NOTES

- See A-500 for wall type details.
- Existing grade to remain.

finish legend - exterior

tag	finish	description	manufacturer	Material: ESR or LRV
MT-1	A606-4 Corten steel, 24 ga.	steel rainscreen; 24" tall horizontal panels	Custom	
MT-2	Brake Metal Coping	26 GA. formed coping over self-healing, self-adhered 40 mil. membrane over parapet, run down wall 6" min.	Custom	
MT-3	Standing seam metal roof	Standing Seam Metal Roof SS-550, 24 GA. Color: matte black (106)	MS	ESR 2385
SV-1	Split face limestone veneer	6" Artion split face limestone veneer - beige & cream	Solstice Stone	LRV: 43
SV-2	Limestone veneer	16x24 Mt. Sinal Limestone - brushed - cream	Solstice Stone	LRV: 39
WD-1	Tongue & groove siding	1x8 Western Red Cedar - rough sawn - Delta Brown	Delta	

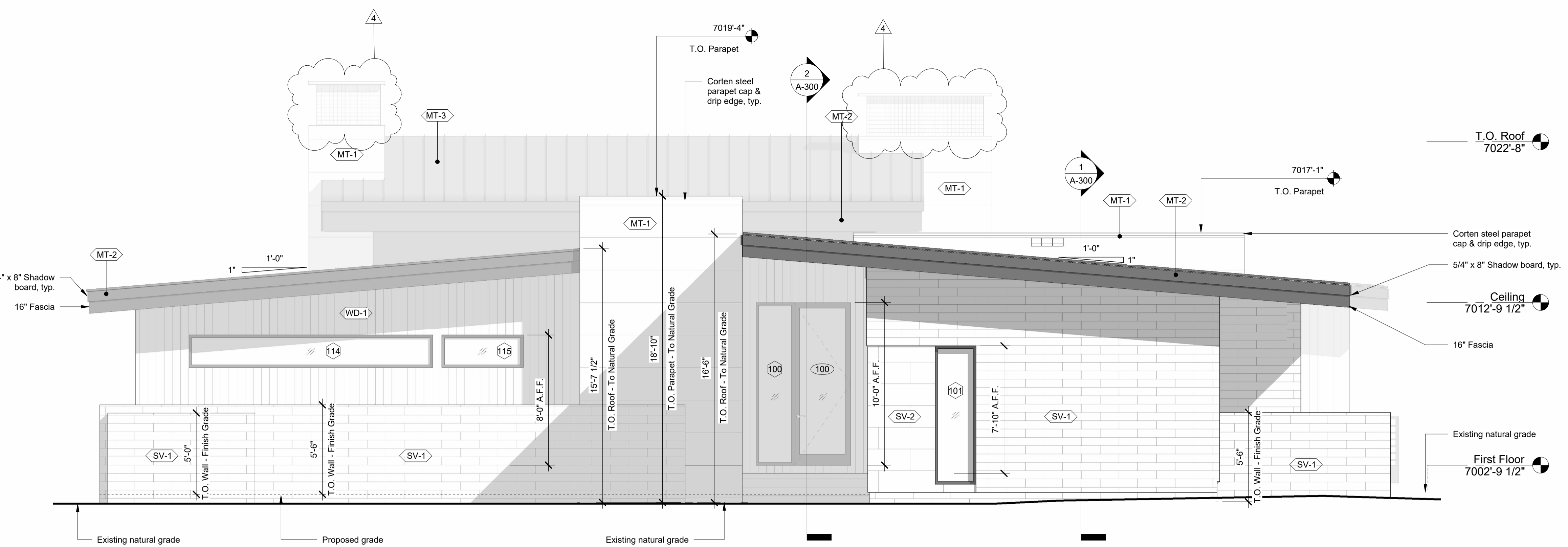


<MT-1> 24 Ga. A606-4 Corten Steel 24" Tall horizontal panels Concealed fasteners
 <MT-2> 26 Ga. aluminum fascia cladding, matte dark bronze finish to match standing seam
 <MT-3> Standing seam metal roof Mechanically seamed Color: Dark bronze

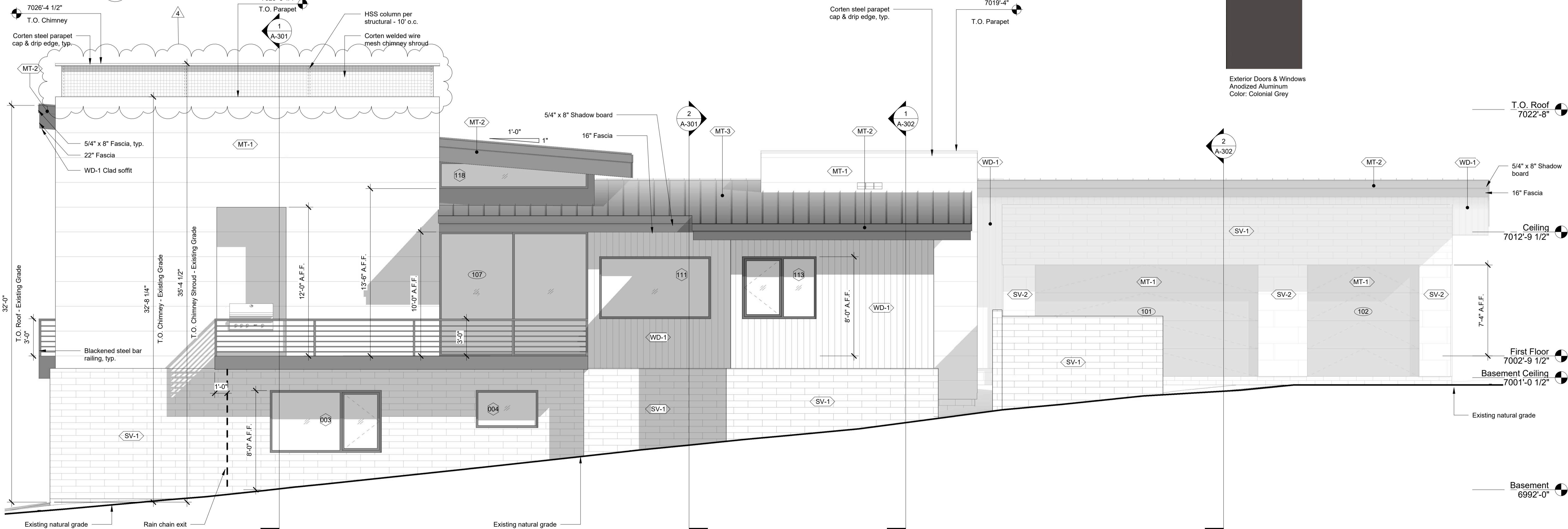


<SV-1> Stone Veneer Solstice stone
 <SV-2> Stone Veneer Solstice stone 6" Artion Splitface - Limestone color: beige & cream - LRV 43
 <WD-1> Wood Siding Delta Millworks Western Red Cedar - Rough Sawn Delta Brown - 1x8

Exterior Doors & Windows
 Anodized Aluminum
 Color: Colonial Grey



1 Southeast
 1/4" = 1'-0"



2 Southwest
 1/4" = 1'-0"



The Ranch Mine LLC
 4340 E Indian School Rd.
 Suite 21552
 Phoenix, AZ 85018

480.399.5990
 info@theranchmine.com
 www.theranchmine.com

PINE CANYON-361
 Lot 361 Woodland Hills Drive
 Flagstaff, AZ 86005



phase:
 Construction Documents

date of issue:
 03.08.2023

rev no, date, description:
 4 03.02.2023 Final Design Review Comments

sheet contents:
 elevations

sheet no:

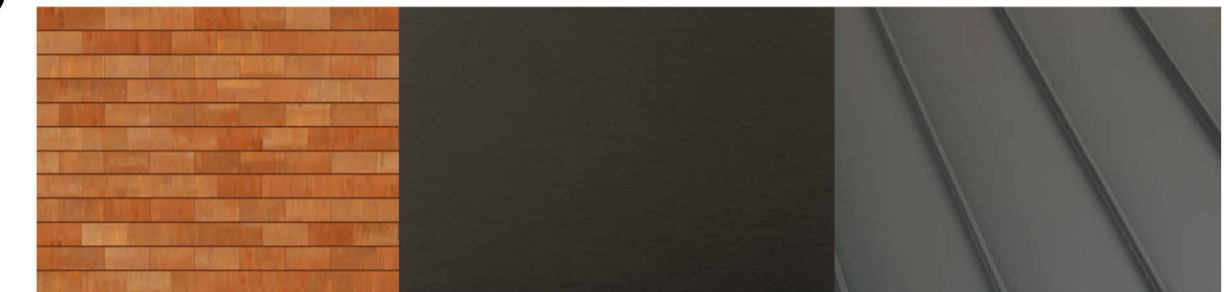
A-201

ELEVATION NOTES

- See A-500 for wall type details.
- Existing grade to remain.

finish legend - exterior

tag	finish	description	manufacturer	Material: ESR or LRV
MT-1	A606-4 Corten steel, 24 ga.	steel rainscreen; 24" tall horizontal panels	Custom	
MT-2	Brake Metal Coping	26 GA. formed coping over self-healing, self-adhered 40 mil. membrane over parapet, run down wall 6" min.	Custom	
MT-3	Standing seam metal roof	Standing Seam Metal Roof SS-550, 24 GA. Color: matte black (106)	MS	ESR 2385
SV-1	Split face limestone veneer	6" Artion split face limestone veneer - beige & cream	Solstice Stone	LRV: 43
SV-2	Limestone veneer	16x24 Mt. Sinai Limestone - brushed - cream	Solstice Stone	LRV: 39
WD-1	Tongue & groove siding	1x8 Western Red Cedar - rough sawn - Delta Brown	Delta	



24 Ga. A606-4 Corten Steel
 24" Tall horizontal panels
 Concealed fasteners

26 Ga. aluminum fascia cladding,
 matte dark bronze finish to match
 standing seam
 Color: Dark bronze

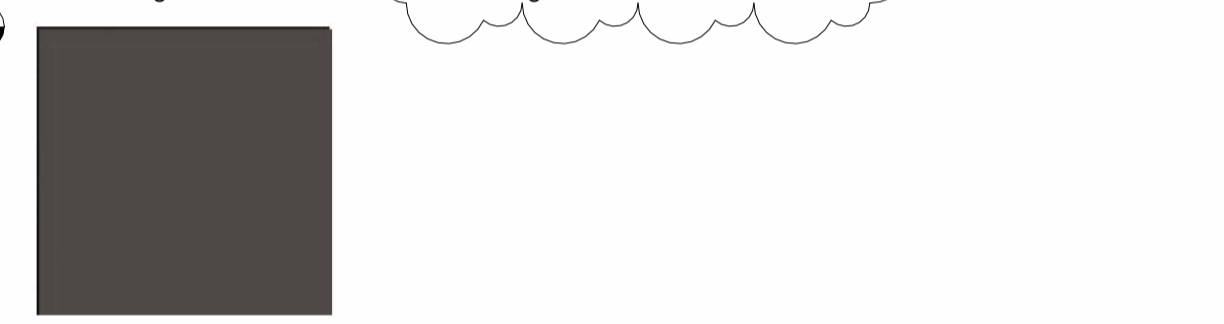
Standing seam metal roof
 Mechanically seamed
 Color: Dark bronze



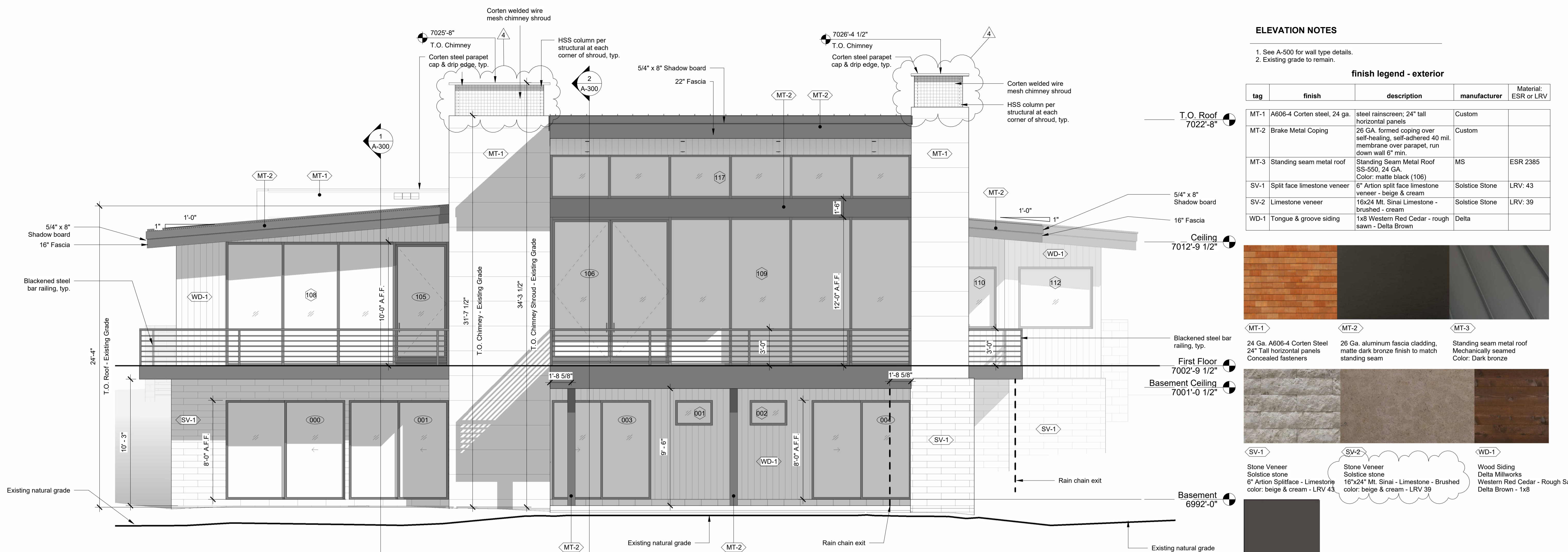
Stone Veneer
 Solstice stone
 6" Artion Splitface - Limestone
 color: beige & cream - LRV 43

Stone Veneer
 Solstice stone
 16"x24" Mt. Sinai - Limestone - Brushed
 color: beige & cream - LRV 39

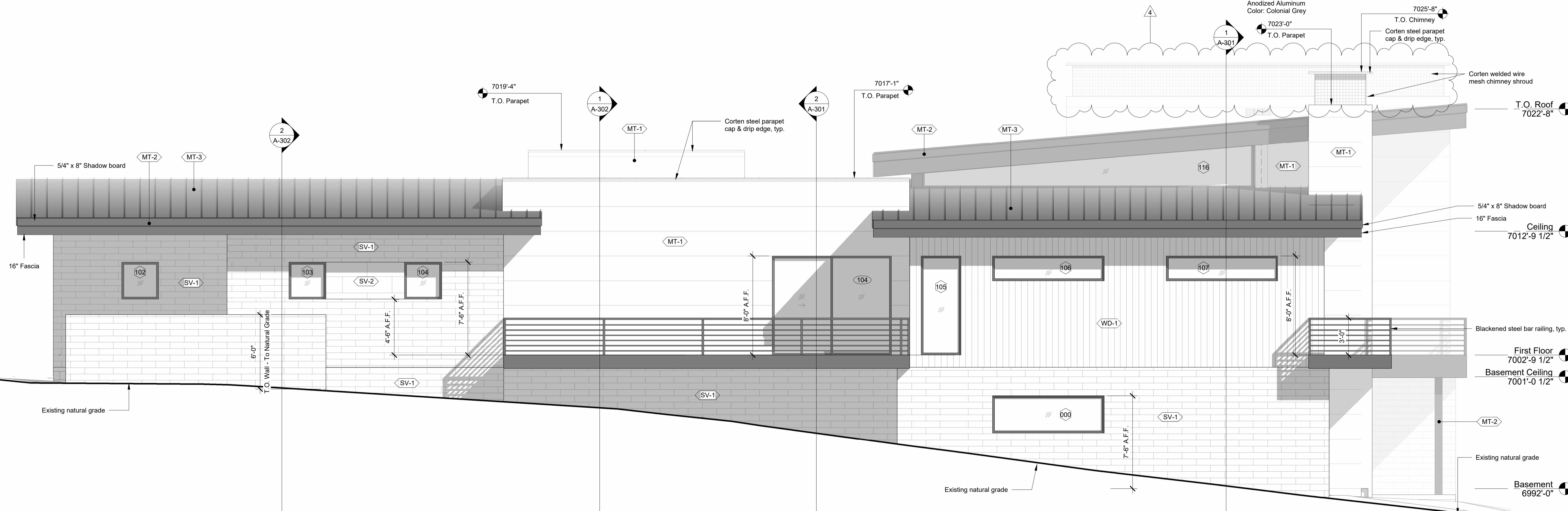
Wood Siding
 Delta Millworks
 Western Red Cedar - Rough Sawn
 Delta Brown - 1x8



Exterior Doors & Windows
 Anodized Aluminum
 Color: Colonial Grey



1 Northwest
 1/4" = 1'-0"



2 Northeast
 1/4" = 1'-0"