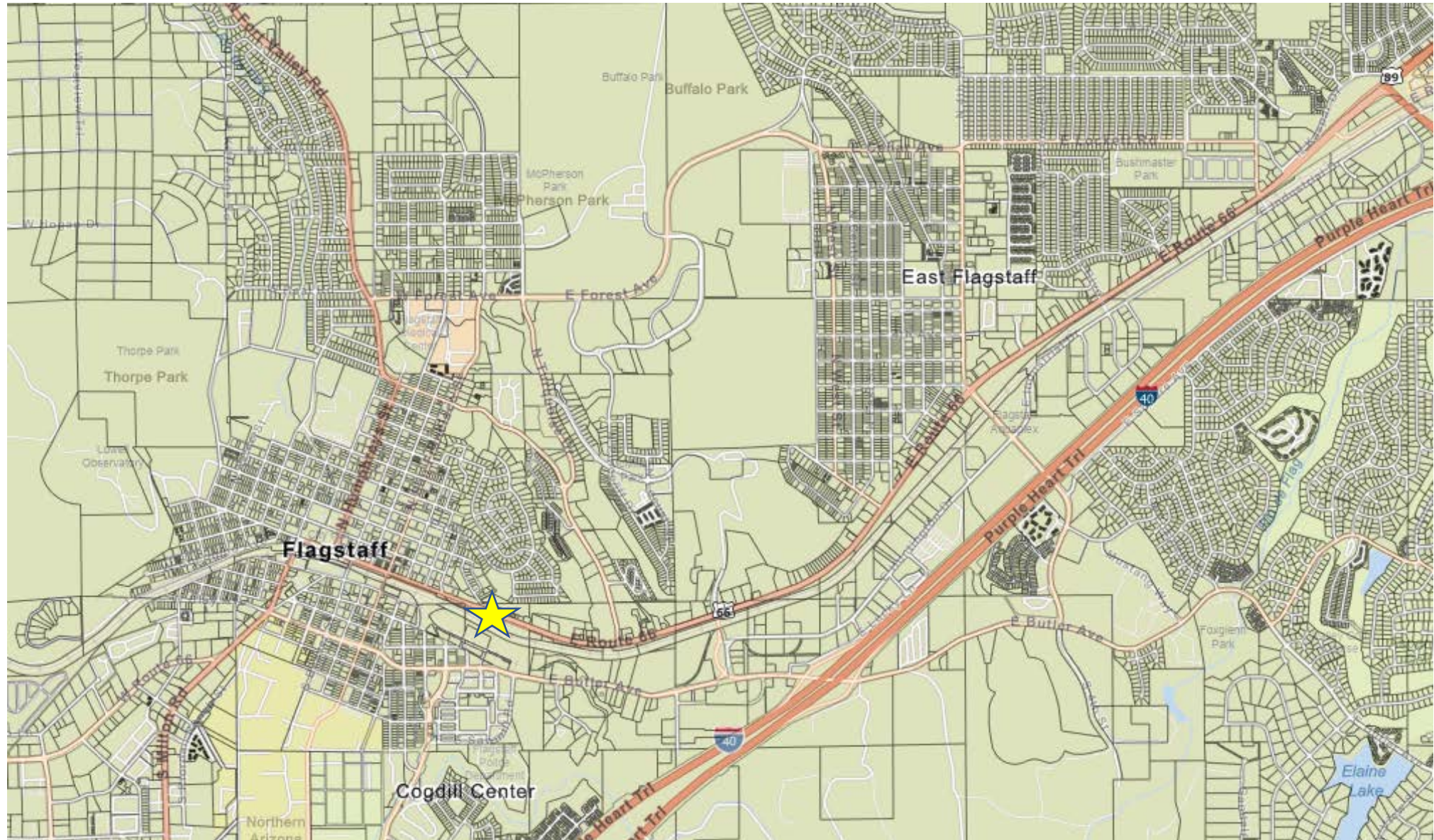


ZH Holdings Property Exchange





Vicinity Map

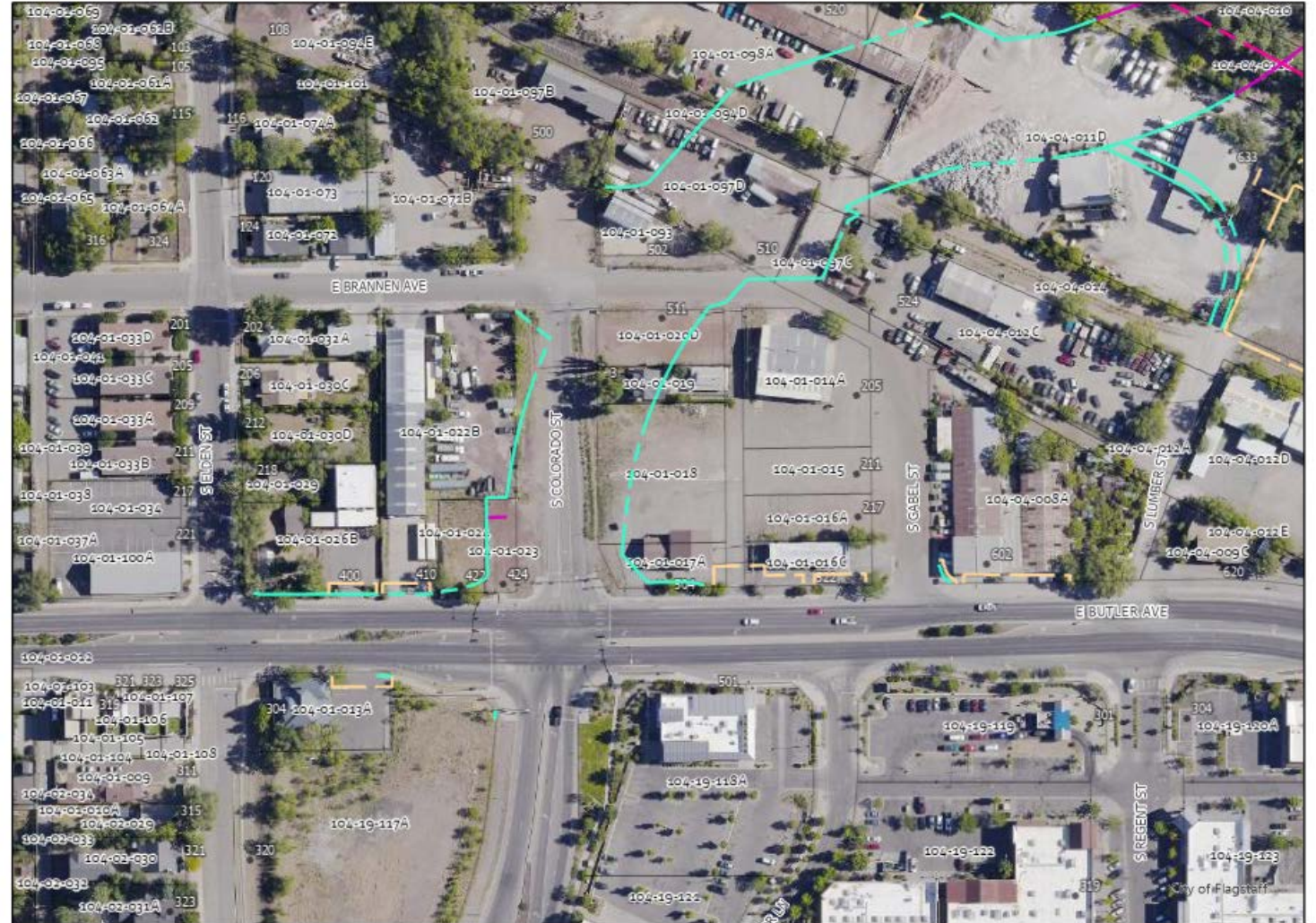




Background

- City purchased entirety APNs 104-01-020D and 104-01-019 for Lone Tree Overpass (LTO)
- Portion outside the green is not needed for the project (approx. 5,751 SQFT)
- LTO project needs approx. 6,816 SQFT on adjacent parcels 104-01-017A and 018.
- Would like to exchange the areas the City owns but are not needed for the project for the areas on the adjacent parcel needed for the project

 Lone Tree Right of Way limits





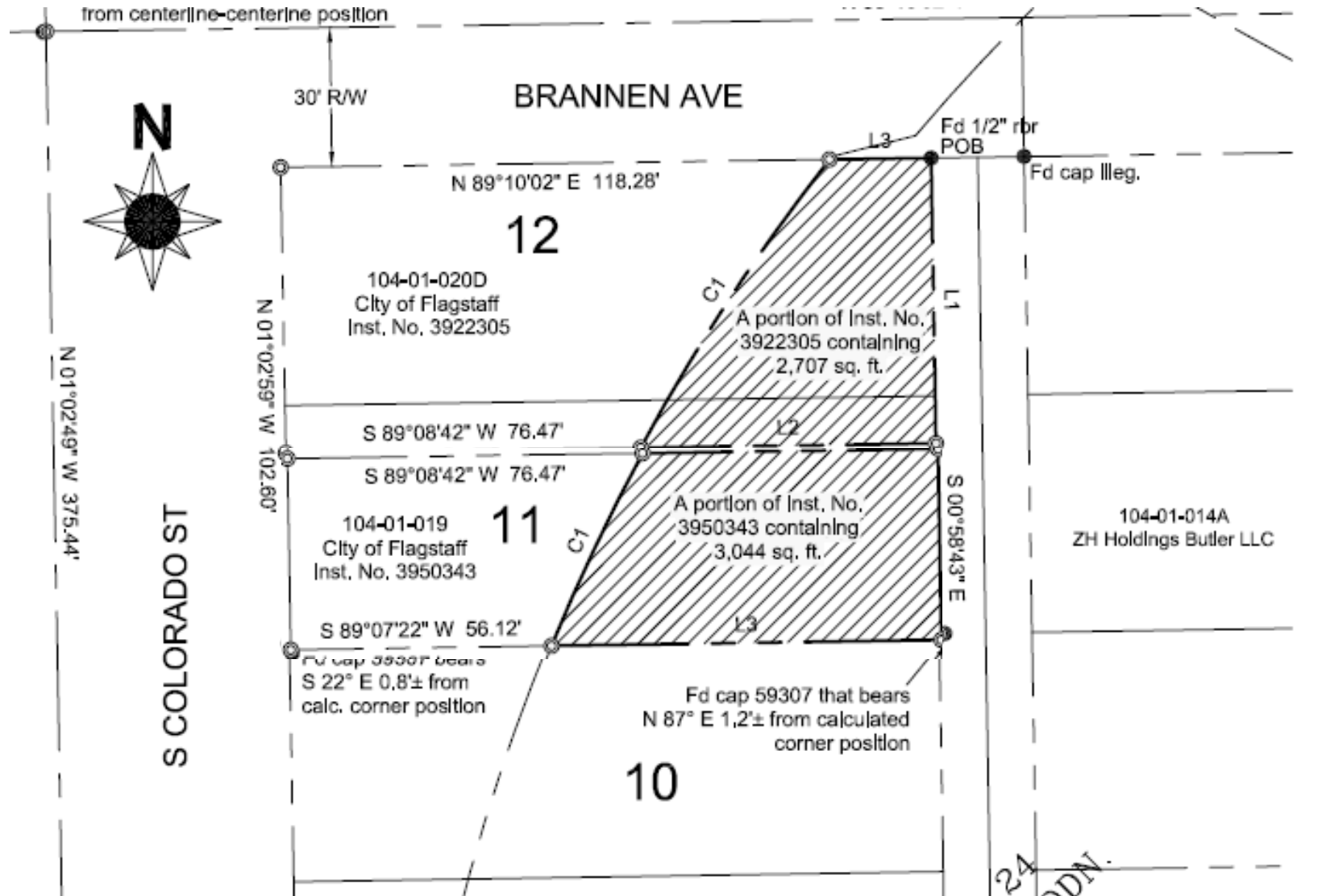
Background

 Lone Tree Right of Way limits



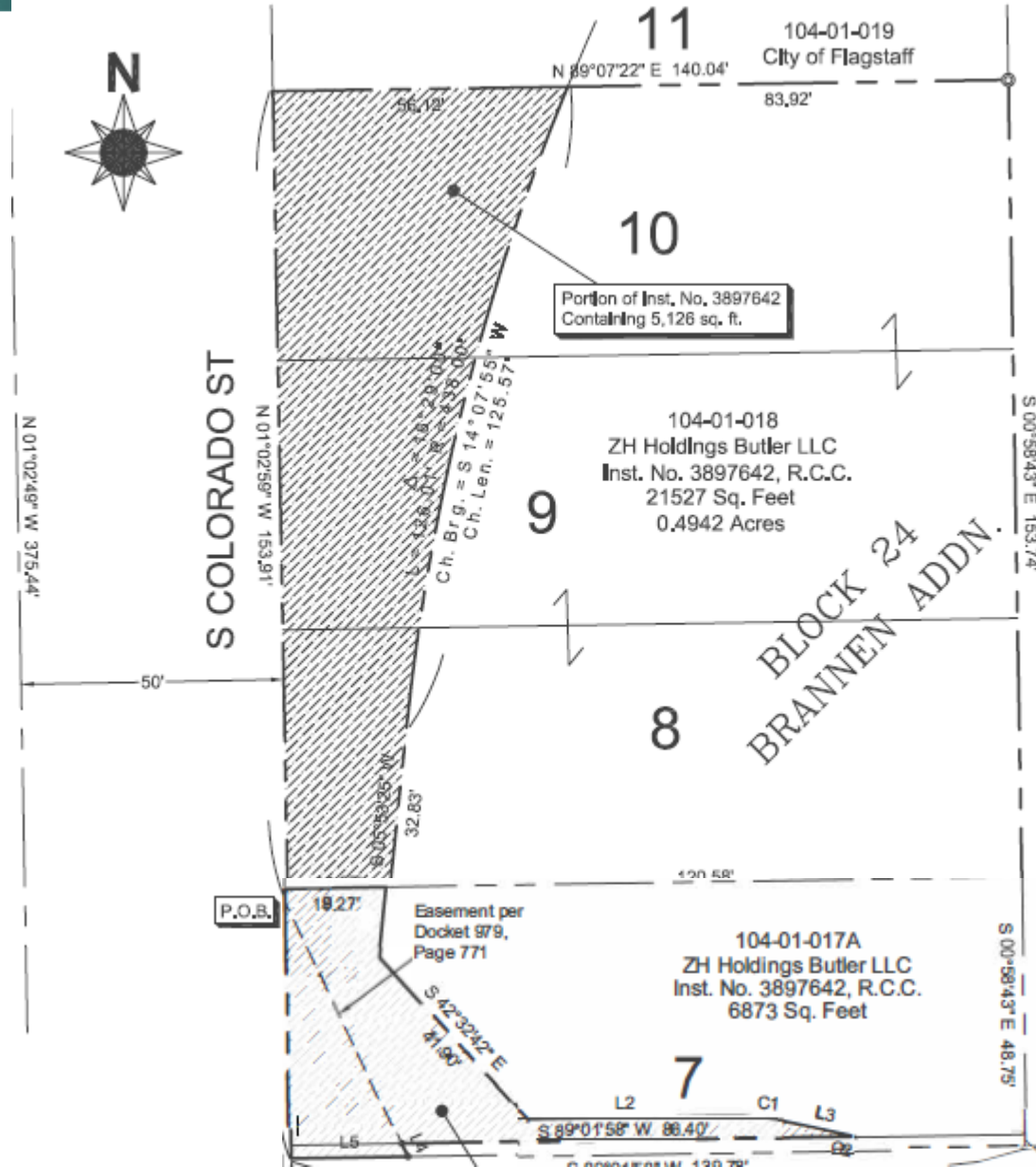


Area of City Parcels to Exchange





Areas City will Receive



City will receive the hashed area on the Southern adjacent parcels



Context



- City staff, including housing and sustainability have been consulted and support the exchange.
- Exchange defrays \$167,011.00 of acquisition costs on adjacent parcel
- Increase development options on private parcel
- There were initial discussions to abandon alley. Not a part of this exchange.



