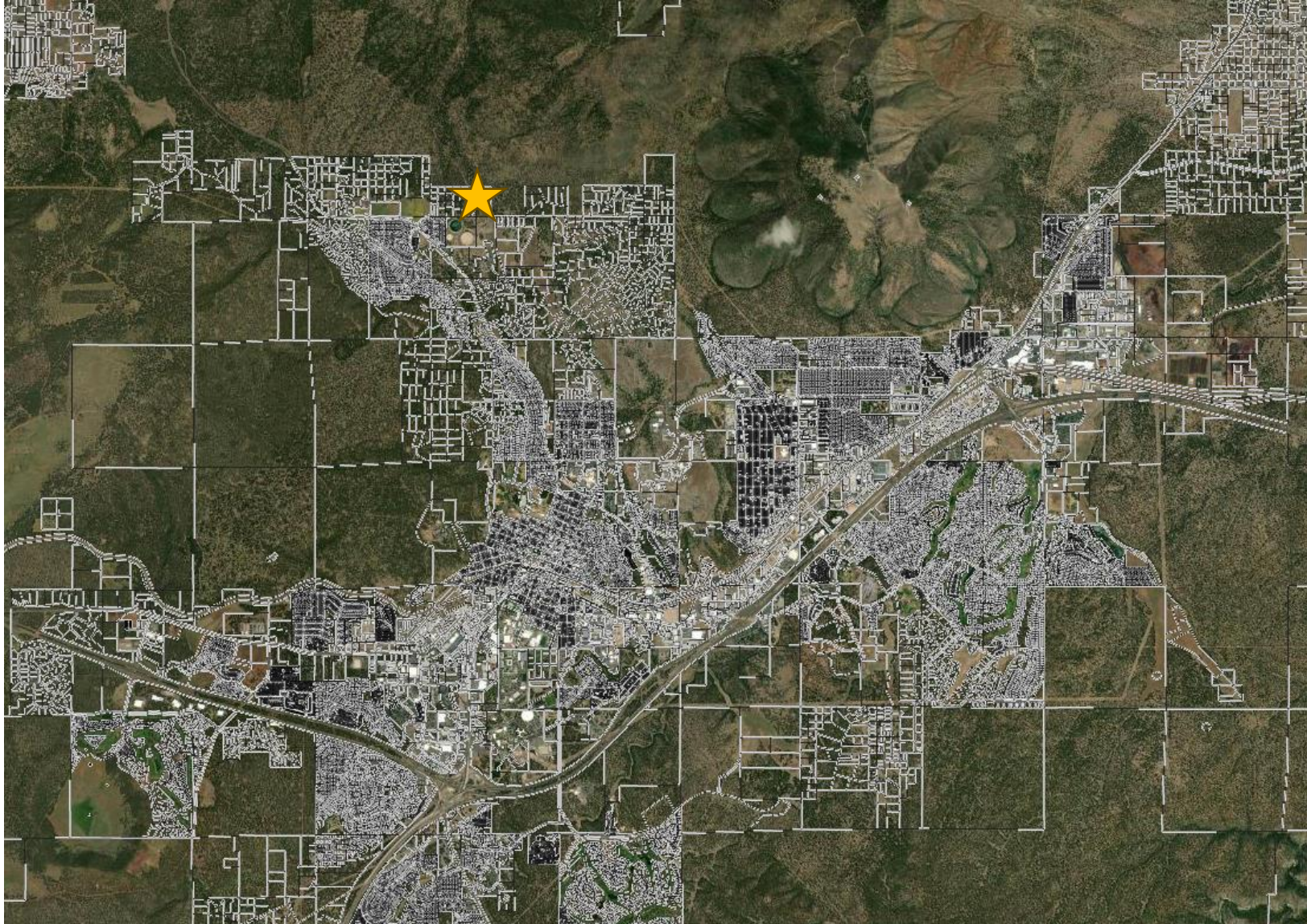


Schultz Pass Property Exchange



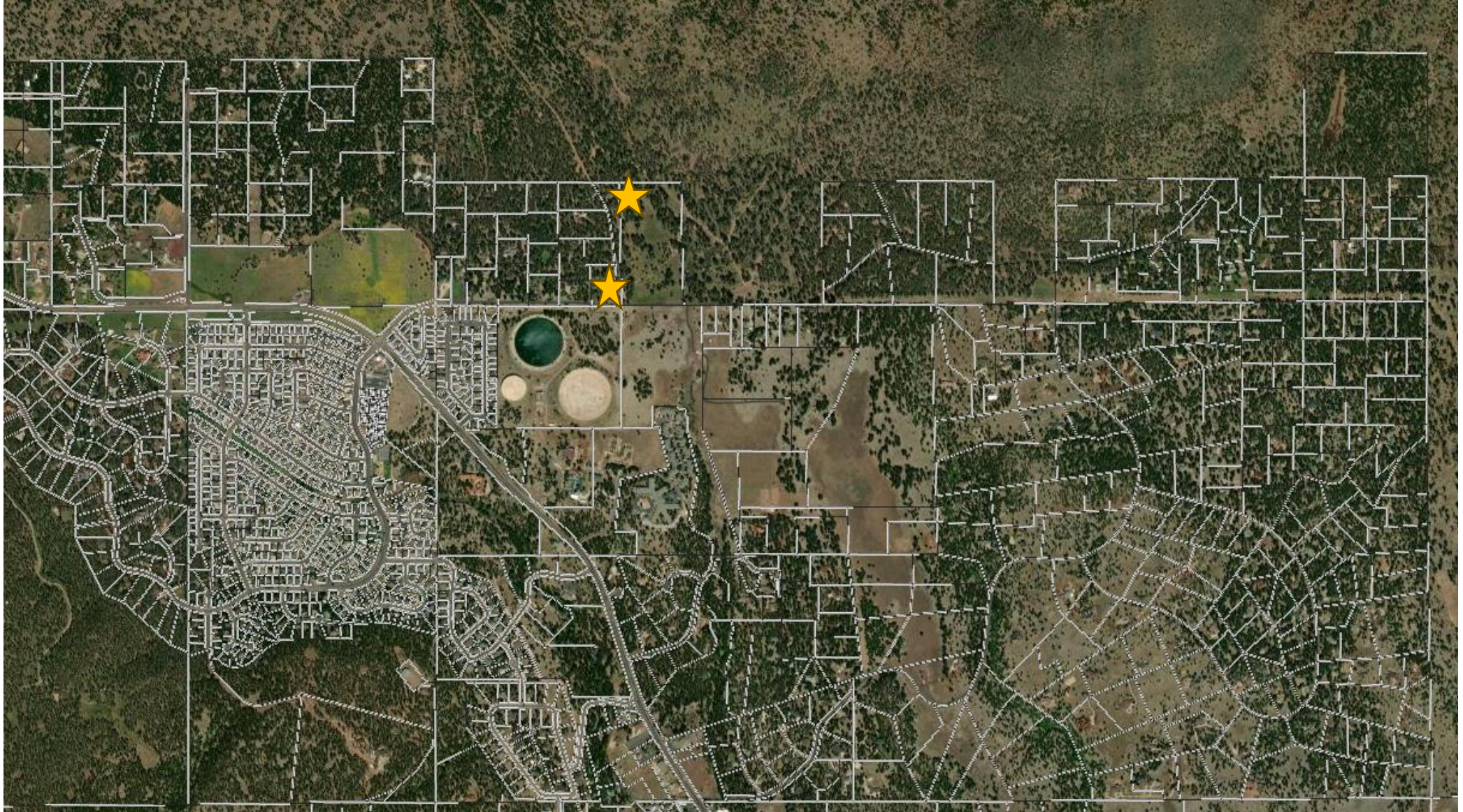


Vicinity Map





Vicinity Map

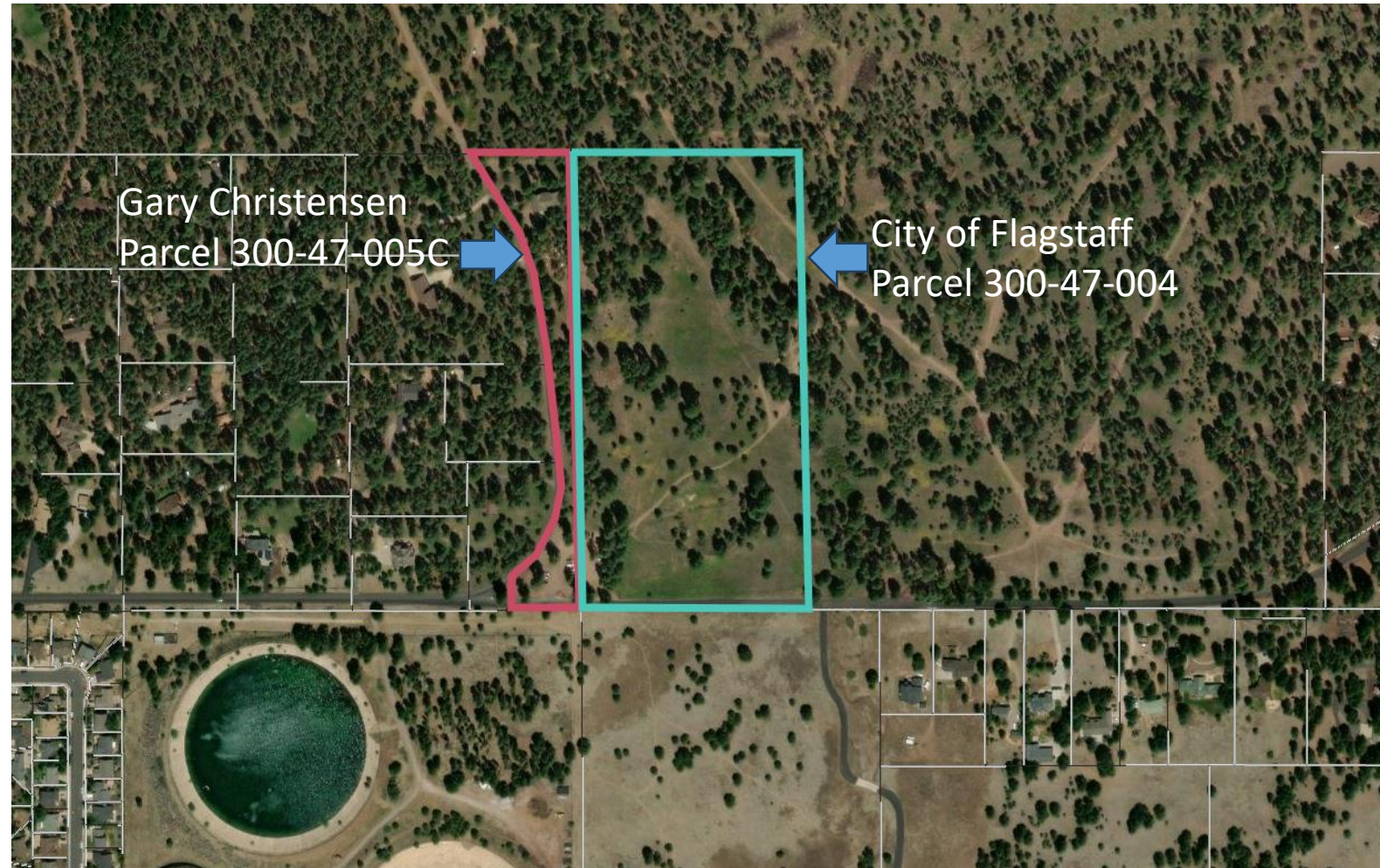




Background



- City of Flagstaff built the Schultz Creek basin and trailhead in parcel 300-47-004 in 2022
- The public has been using the southern portion of Gary Christensen's lot for parking and access to the trailhead
- The City needs the lower portion of Gary's lot to provide public access to the FUTS and formalize the existing trailhead on private property
- In lieu of purchasing the land from Gary Christensen, a trade has been proposed





Exchange Properties

- City staff, including FUTS, Water Services, and the Open Space Commission have been consulted and support the exchange.
- Exchange defrays cost of purchasing the needed land for public access
- Provides safe access to the FUTS trailhead

Gary Christensen will give to the City



City will give to Gary Christensen

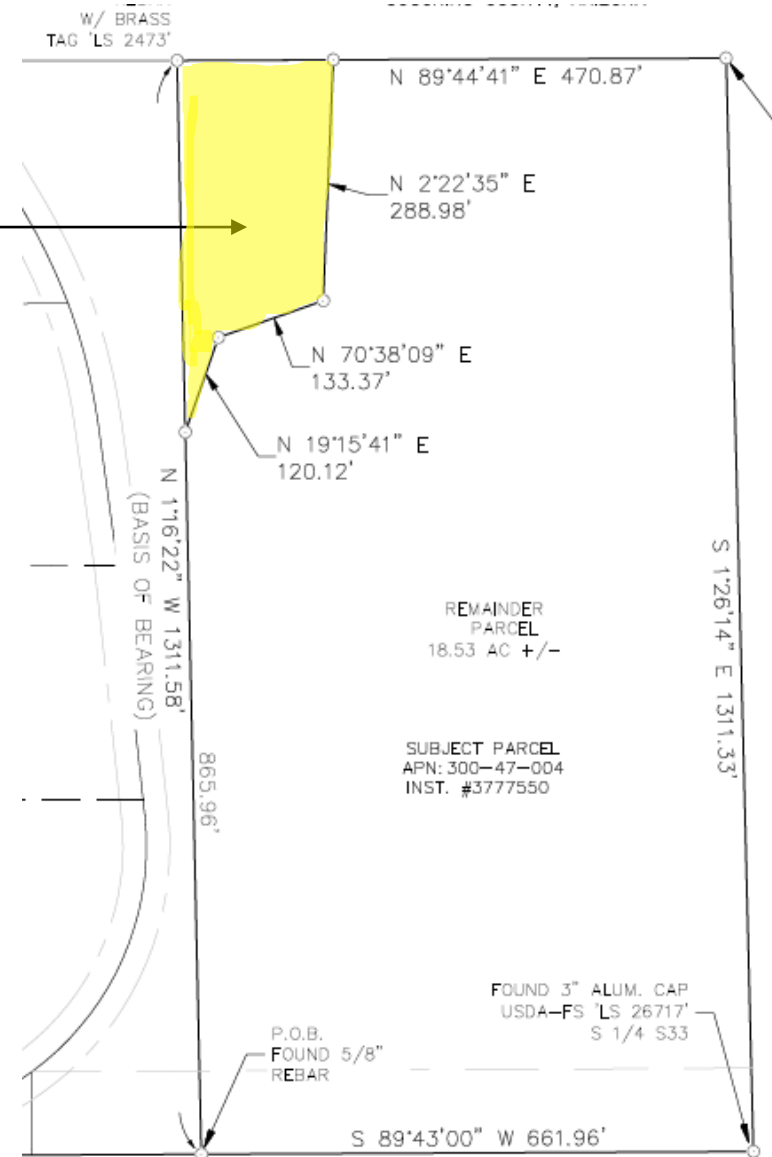


City will Give



City to Give

City parcel will be split and Gary Christensen will receive approximately 58,370 sq ft of land.



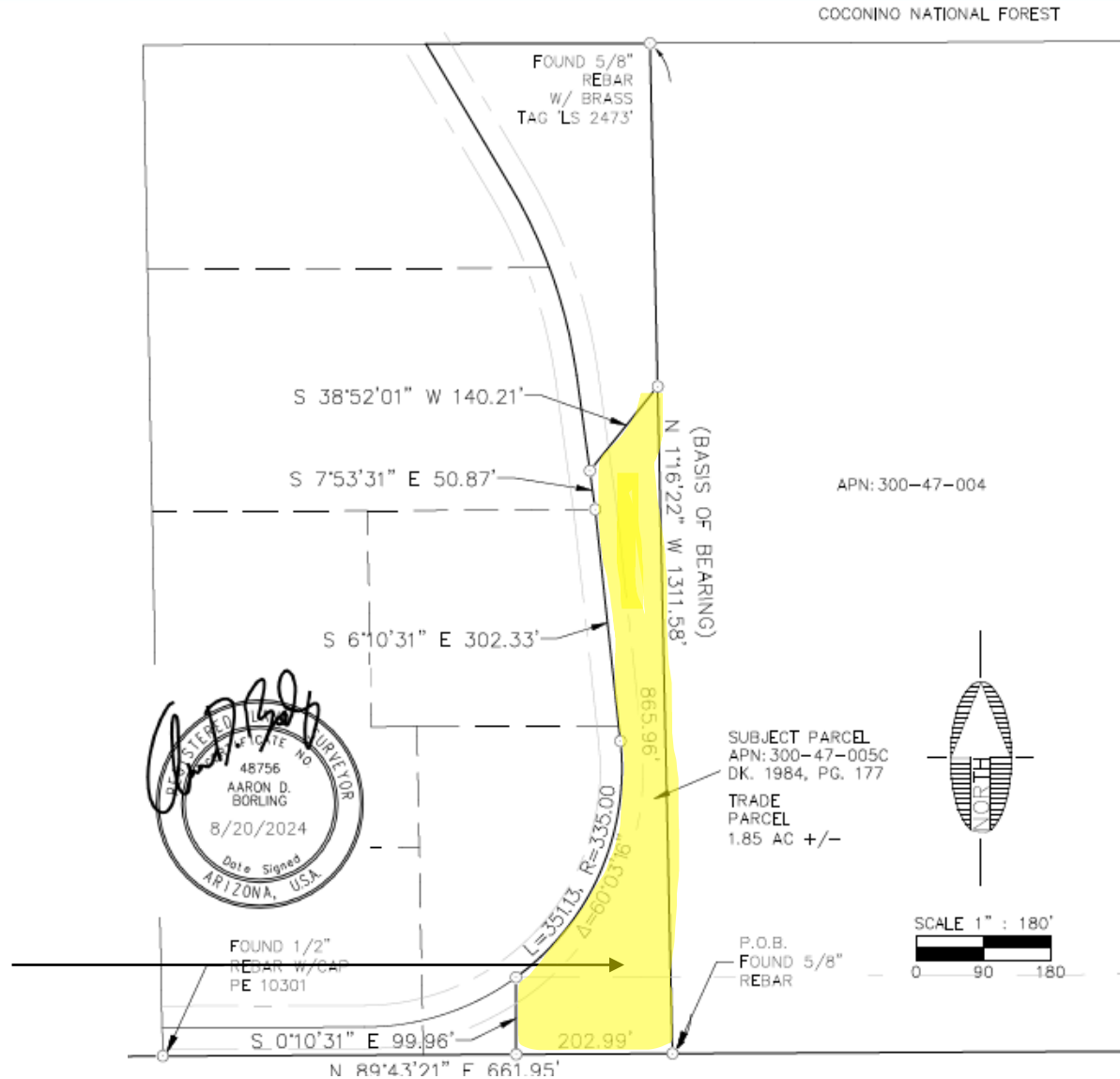


City will Receive



Gary Christensen parcel will be split and the City will receive approximately 80,586 sq ft of land.

City to receive





Context



- City Real Estate division feels the exchange is of equal value
 - Parcel City will receive is 80,586 sq ft encumbered with 40,636 sq ft of road easement
 - Parcel City will give is 58,370 sq ft encumbered with a 6962 sq ft waterline easement



Questions?



Schultz Y Trailhead Christensen land trade DRAFT

- Christensen remaining
- City remaining
- Trade to Christensen
- Trade to City
- Easements
- Waterline

