



A scenic view of a forested hillside with a winding path and a house visible in the background. The text is overlaid on the image.

Who are the PROSE?

Mission: Connecting our community through people, parks, natural areas, and programs

Vision: Creating unique experiences and places to play

Values: Community Enrichment, Conservation, All Inclusive, Authenticity

PROSE Leadership Team



Rebecca Sayers



Amy Hagin



Gino Leoni, Parks



Tyrone Johnson, Recreation



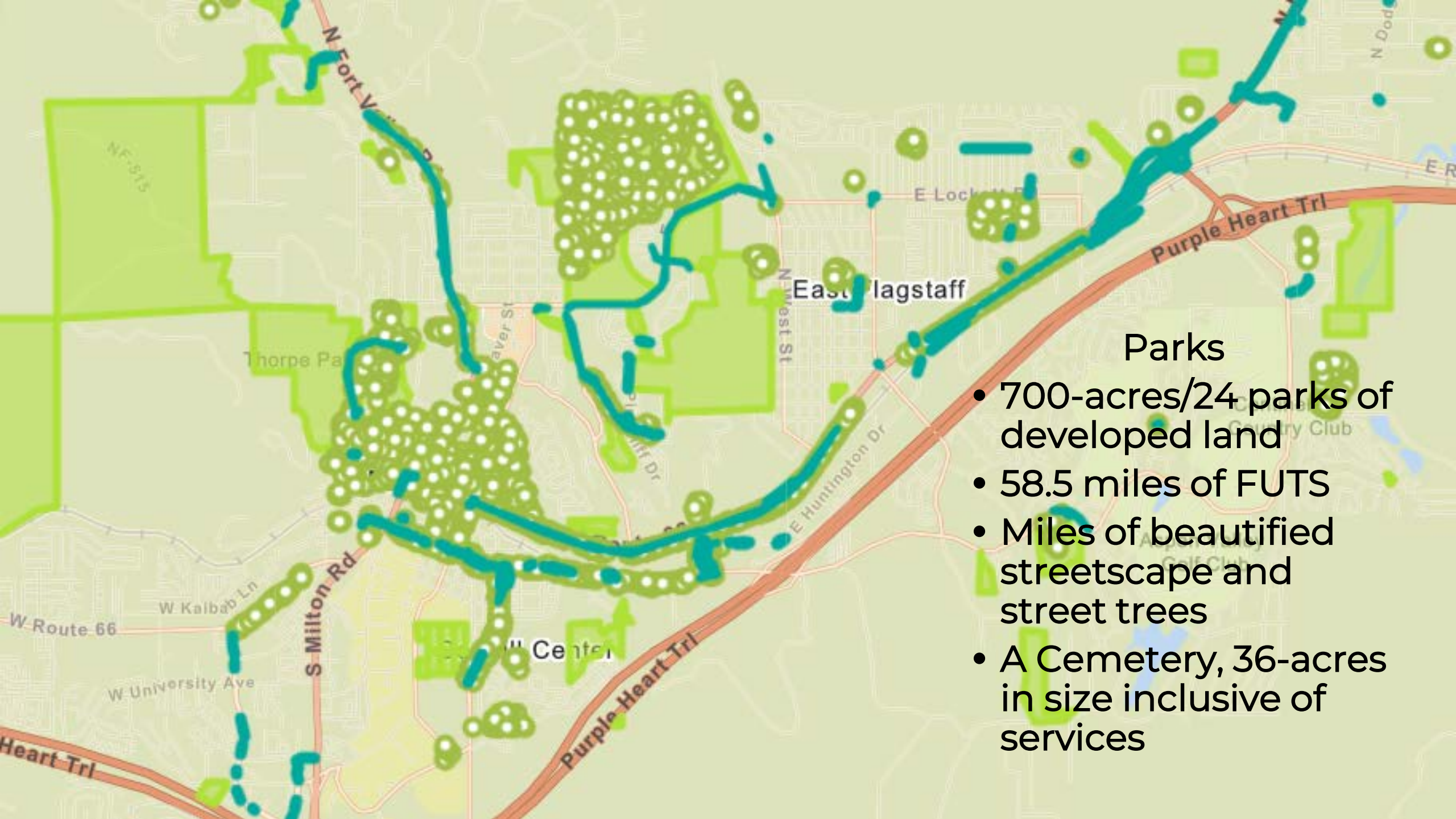
Robert Wallace, Open Space



Haley Reynolds, Events and Marketing

Parks

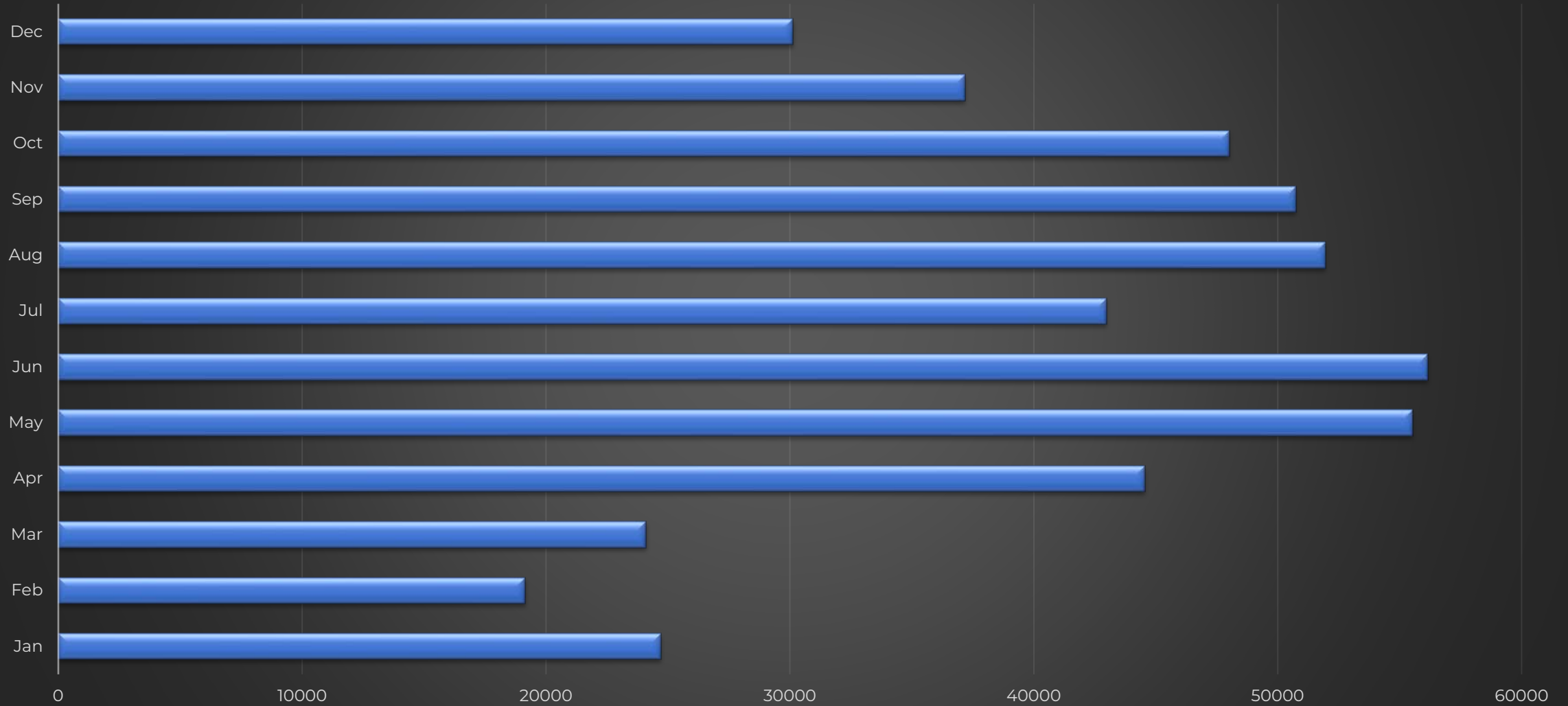


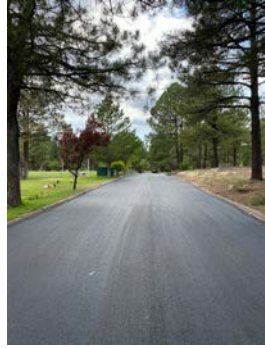


Parks

- 700-acres/24 parks of developed land
- 58.5 miles of FUTS
- Miles of beautified streetscape and street trees
- A Cemetery, 36-acres in size inclusive of services

FUTS Users by the Month





How does Parks operate:

- Daily maintenance
- 7 Days a Week/365 Days a Year
- Refuse and litter control
- Custodial and facility maintenance
- Inspections
- Emergency and Snow Operations
- Can do attitude
- Communication and collaboration
- Heart, soul and fun!

Recreation



Recreation

Manage & Program 4 Centers

Flagstaff Aquaplex
(aquatics & fitness)

Hal Jensen Recreation
Center (youth)

Jay Lively Activity Center
(ice rink)

Joe C. Montoya
Community & Senior
Center (elders and
community)

Provide a safe-haven for
health and wellness





How does Recreation operate:

- Daily maintenance
- Daily programming
- Solving customer needs
- Custodial and facility maintenance
- Marketing targeting
- Cost recover
- Can do attitude
- Communication and collaboration
- Heart, soul and fun!





The data, and the return to indoor recreation

Increasing Aquaplex Members, serving thousands on the ice annually, over 200 youth basketball players, 60 plus congregate meals per weekday

Open Space





Open Space

3,000 acres

Three natural and cultural preserves

Educational programming for youth and adults

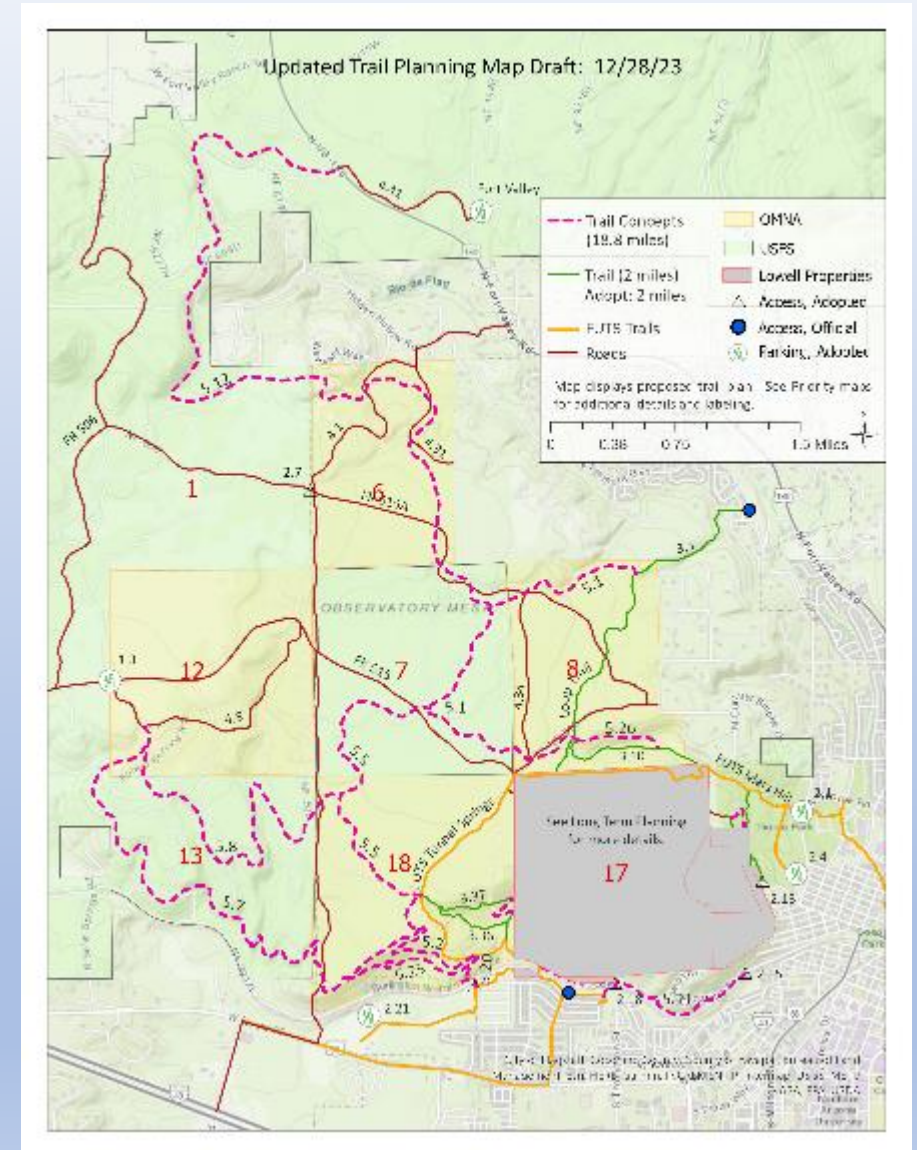
Connection for the community via trails/FUTS



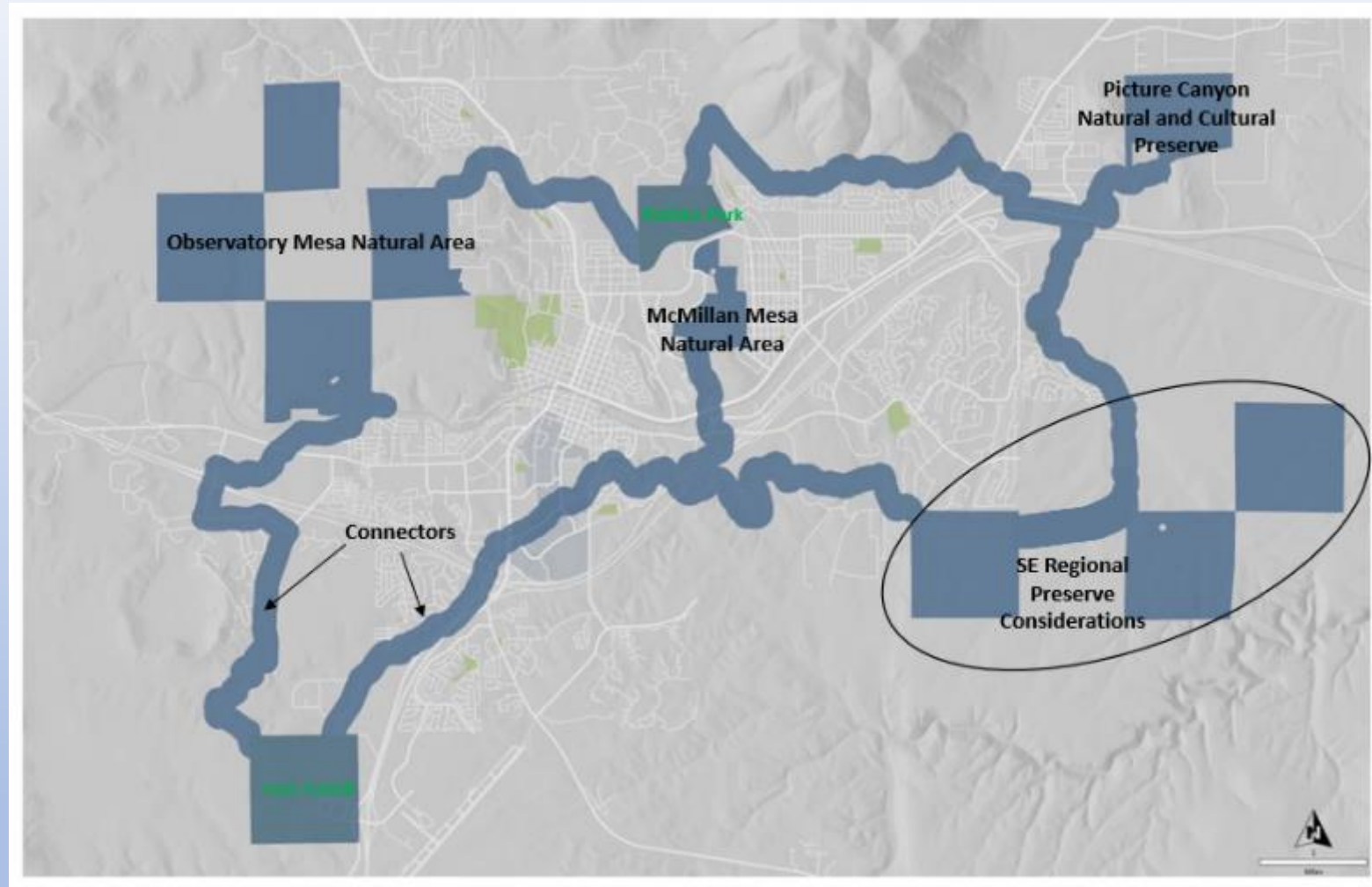
How does Open Space operate?

- Property maintenance
- Restoration
- Cultural site preservation
- Educational programming
- Community programs
- Grant project applications and implementation
- Refuse and litter control
- Volunteer coordination

- Observatory Mesa Natural Area Trail Plan
- Open Space system and 10-minute walking access time
- Preservation Along JWP
- Invasive plant mitigation
- Picture Canyon restoration and signage
- Educational programming



- PROSE Master Plan
- City Code updates
- Interconnected System
- Achieve a sustainable funding source outside of the general fund



Events

...and Marketing
and Athletics



What does Events and Marketing “Mean”?

- Produce City Events and Manage External
 - Permit over 1,500 events annually
- Marketing for the entire Division

Athletics Programming

- Youth and Adult Sports plus tournaments, reaching thousands





Getting into the details...



How is PROSE funded?

General fund: maintenance, operations, programming, small projects

- \$7,600,000 FY2023-2024

BBB Recreation: P&R focus (for now), 5-year capital plan, 10-year planned projects, some operations and maintenance including FUTS

- \$1,970,000 capital projects FY2023-2024
- \$2,470,000 transfer to GF for operations

Grants: mainly Open Space related grants for trail maintenance, invasive weed treatment, native vegetation restoration, education programming

- Over \$500,000 FY2023-2024

Color of Money

 **General Fund**

 **Special Revenue Funds**

 **Debt Service Funds**

 **Capital Project Funds**

 **Enterprise Funds**



How does PROSE receive feedback and set priorities?

- Parks and Recreation Commission
 - Approves BBB Recreation spending
 - Prioritizes projects and needs for placement into the 5 and 10-year plan



Parks and Recreation Commission priority ranking exercise

PRC Prioritization Exercise - Survey Data from Commissioners



Current Parks and Recreation Commission priorities (as ranked in 2022)

PRC Prioritization Exercise - Survey Data from Commissioners
Top 10 Priorities



How does PROSE receive feedback and set priorities?

Open Spaces Commission

- Review plans and recommendations for open space
 - Maintenance and restoration
 - Programming
 - Planning for the future
 - Open Space land acquisition priorities – connections and access



Neighborhood or community-based projects

- Outreach to immediate neighborhood or regional community based on the location and type of space planned

5-year BBB-recreation
capital fund, in year 1 right
now

Upcoming deliveries

Upcoming planning

Operating Capital





Sport courts at
Bushmaster Park

FAIR: Bankshot opportunities





West Side Park

First new park since 2003










Neighborhood classification

Design services and outreach contracted

Thorpe Park

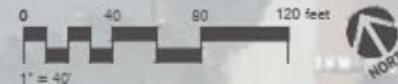


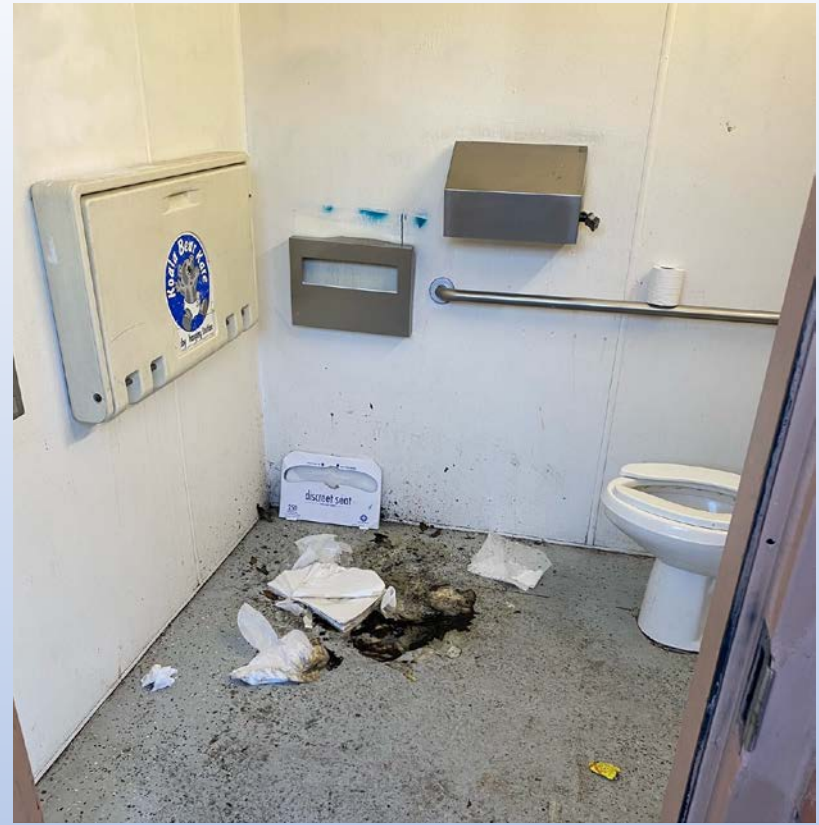
LEGEND:

-  Native Pollinator Gardens
-  Native Revegetation Gardens
-  Orchard
-  15' Path
-  10' Path
-  5' Path
-  Gathering Space
-  Bench/Table
-  Interpretive Signage

Six Pickleball courts will be located at the current Thorpe Bark Park.

Re-examine the skatepark/pumptrack location.





Heritage Square Restrooms

FAIR: Potential pond near I-17 / Cosmic Ray FUTS

- USFS property
- Would require a land procurement or possible agreement with USFS
- Funding for infrastructure to hold water; possible stormwater investigation needs?



What next?

Challenges exist but what are the PROSE doing about it?





Thorpe Park - ICCC

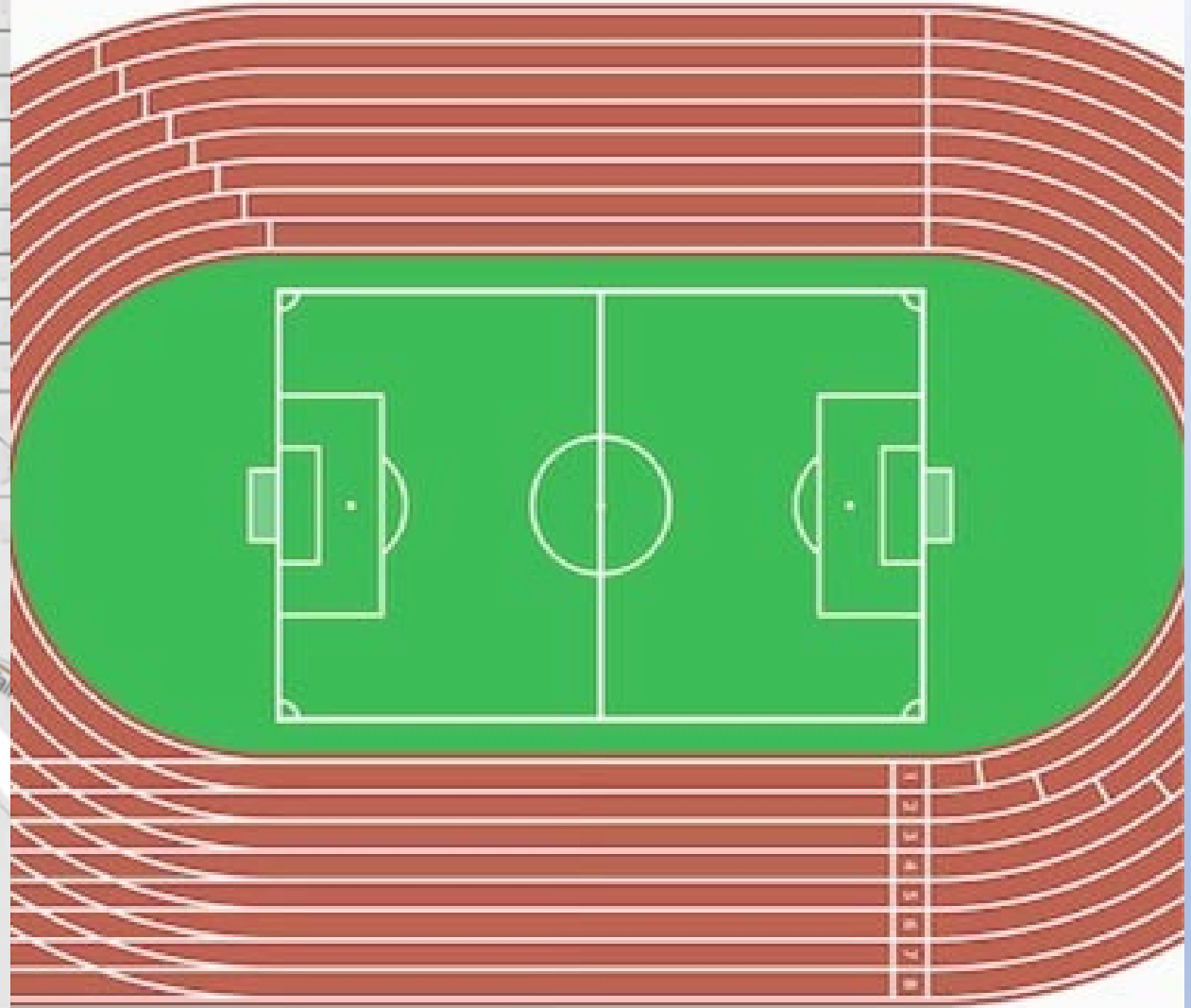
Provide air conditioning inside the gym at Hal Jensen Recreation Center



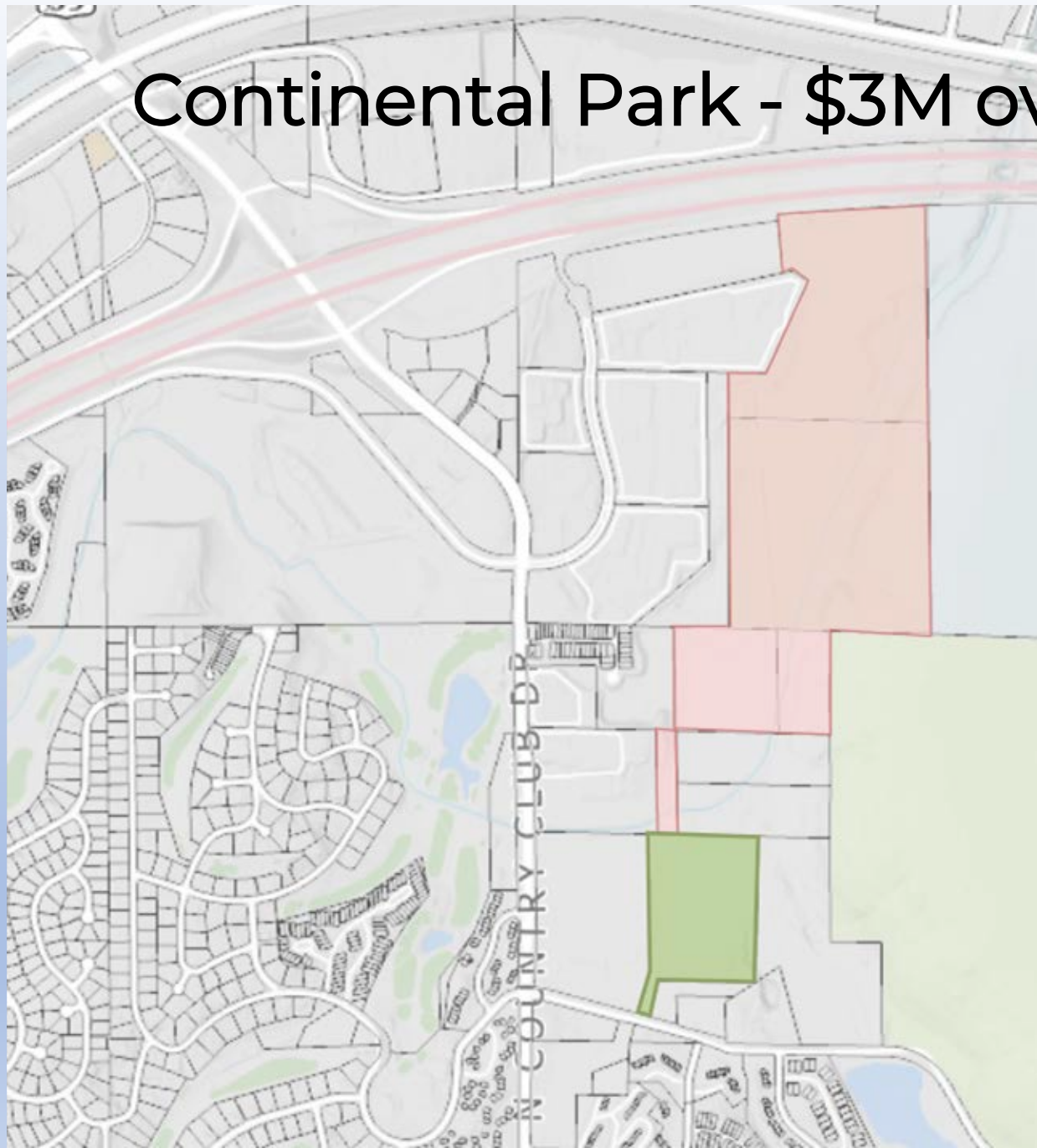


Ponderosa Park Reconstruction

Cheshire Park - \$1M plus a partner



Continental Park - \$3M over two FY, need a partner



Parks & Recreation Operating Capital – Impacts of a Good Change

Thorpe Park Multi-Purpose Field Entrance

Signage/Kiosks

Bushmaster Park Skate Park Fence Renovation

Noise abatement walls in the dining space at JCM

Fitness equipment



