

# Meade Lane Drainage





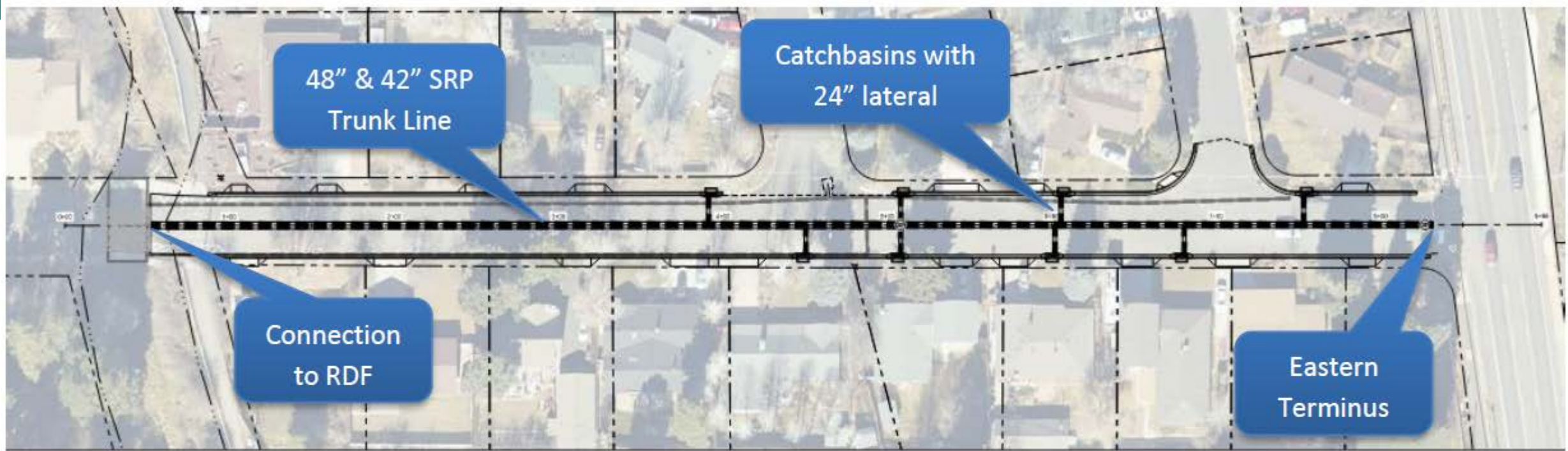
# Meade Lane Drainage Improvement

## Summary

- Identified as an issue in the 2019 Coconino Estates CIP
- Confirmed as a flood issue in 2022, Pipeline Fire modeling
- Drainage consists of two 12” pipes, insufficient for regular flows.
- Proposed solution, a 42 to 48” transitioning pipe with new catch basins.
- Approximate cost: \$863k for drainage improvements, \$1.2M for drainage and utility reconstruction



# Meade Lane Plan and Profile



STORMDRAIN PROFILE VIEW

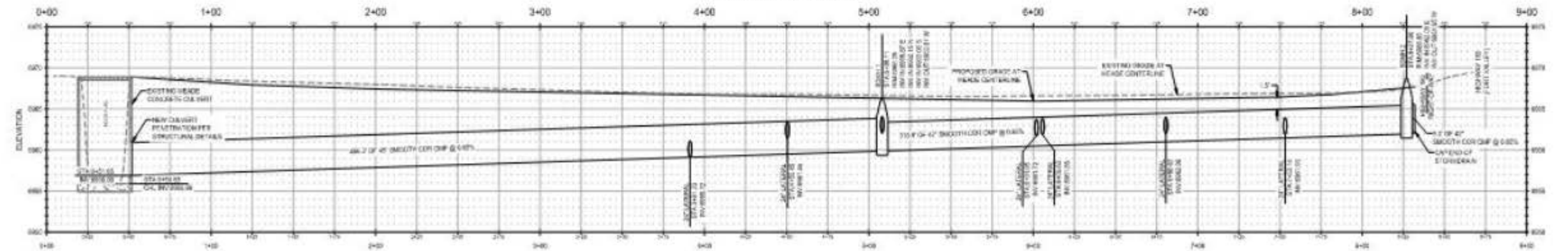
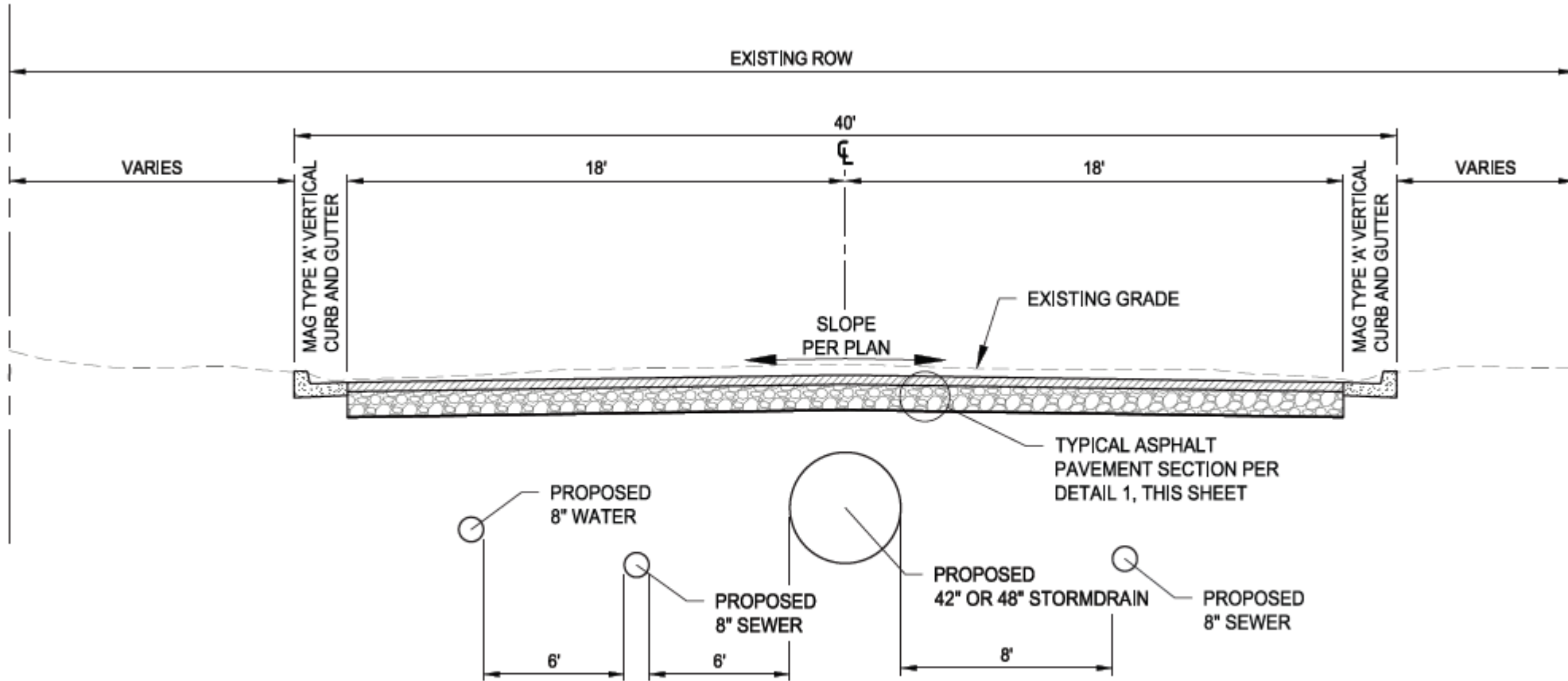


Figure 5 - Proposed Design



# Meade Roadway Section



2 MEADE LN ROADWAY SECTION  
NTS