

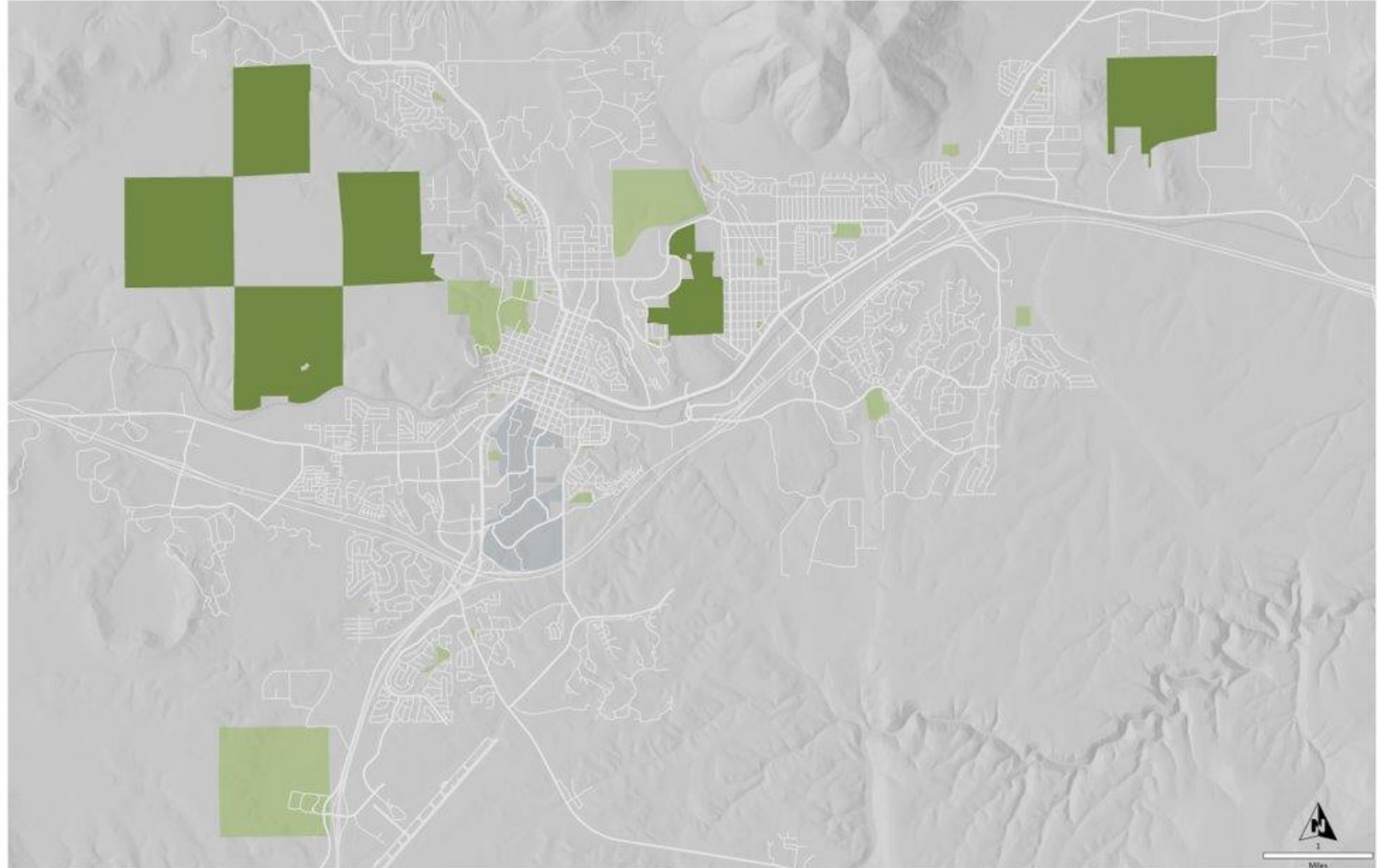
# Open Spaces Commission



# Open Space Project Planning

## Existing Regional Preserves:

- Picture Canyon
- Observatory Mesa
- McMillan Mesa





# Open Space Goals

## Revisiting Open Space Goals

PROSE Mission - Connecting our community through Parks, Recreation, Natural Areas, and Programs.

PROSE Vision - Creating unique experiences and places to play.

### Open Space Specific Goals:

- Protecting and restoring Flagstaff's natural, cultural, and scenic resources to enhance recreational and educational opportunities for residents and visitors.
- To create an integrated system of protected lands around Flagstaff that are connected by FUTS and various corridors, such as washes and hillsides



# Deferred Maintenance

What is meant by "deferred maintenance"?

A backlog to infrastructure repairs or asset maintenance due to budgetary limitations

## Examples

Parking lot chip seals and crack sealing

Large-scale fencing repairs

Large-scale trail repair or replacement

Restoration projects



# New Amenities & Acquisitions

What is meant by “upgrades or new and acquisitions”?

A new open space property, a new amenity feature, or an improvement to an asset

## Examples

New parking

New trail segments/systems

New Fence

Bridge upgrade

Open space property purchase

# Top Deferred Items

## Parking:

Picture Canyon entry road and parking lot



# Top Deferred Items

Trail rehabilitation:

Picture Canyon

McMillan Mesa



# Top Deferred Items

## Property Restoration:

Picture Canyon Rio de Flag Corridor

Observatory Mesa chip piles

McMillan Mesa seeding along FUTS and  
Isabel Street

McMillan Mesa tree buffer along Veteran's  
Home

Observatory Mesa tank restoration



# New Amenities & Acquisitions

## Facilities and Parking:

Schultz Creek trailhead

Picture Canyon permanent toilet




# New Amenities & Acquisitions

## Signage:


Picture Canyon signage replacement and upgrade

McMillan Mesa sign design and implementation



**FLAGSTAFF  
OPEN  
SPACE**

**McMillan Mesa  
Natural Area**



**Welcome to McMillan Mesa Natural Area!**  
The City of Flagstaff acquired this land in November 2016, after approximately 86% of Flagstaff voters voted in favor of its preservation. We welcome you to enjoy the expansive views, diverse plants and animals, and cultural resources found in this native grassland and forest ecosystem. Please help out community protect this beautiful natural area by respecting the guidelines below.

### Rules and Courtesies

**Reduce Your Impact:** ride the bus or park your vehicle at the Buffalo Park lot and enjoy this area using alternative modes of transportation. **Motorized travel is strictly prohibited.**


**Share The Trail:** show courtesy to all users including hiker and bikers. Equestrian use is prohibited on the mesa.

**Respect Wildlife:** McMillan Mesa provides ample opportunity to observe wildlife, but please do so from a safe distance to ensure your safety. **Hunting is prohibited within this natural area.**

**Respect Cultural Resources:** enjoy the cultural resources that have been here for over 700 years. Help us protect these sites by not touching petroglyphs or taking things home with you.

**Pack it Out:** please dispose of all your waste properly by using a trash bin or taking it home with you.


**Keep Pets on Leash:** pet owners must keep their pets on a leash when using Flagstaff natural areas to ensure the safety of their pet and wildlife. Pet owners are also required to clean up after pets to keep a clean environment.



**For more information about Flagstaff Natural Areas:**

[www.flagstaffaz.gov/openspace](http://www.flagstaffaz.gov/openspace)    Scan this QR Code to learn more about McMillan Mesa Natural Area

928.213.2154



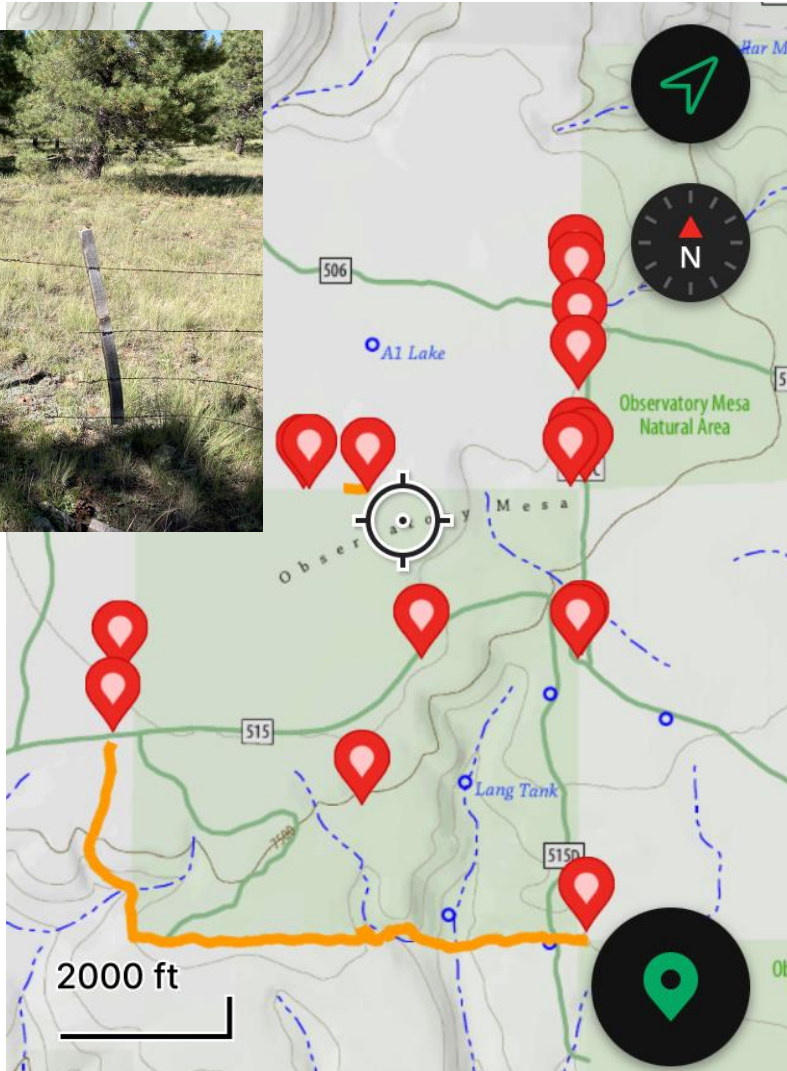
# New Amenities & Acquisitions

## Fencing:

Observatory Mesa  
Picture Canyon



Picture Ca  
West boundary



Picture Canyon Natural Area Fence Survey Results

Completed: 12/2022



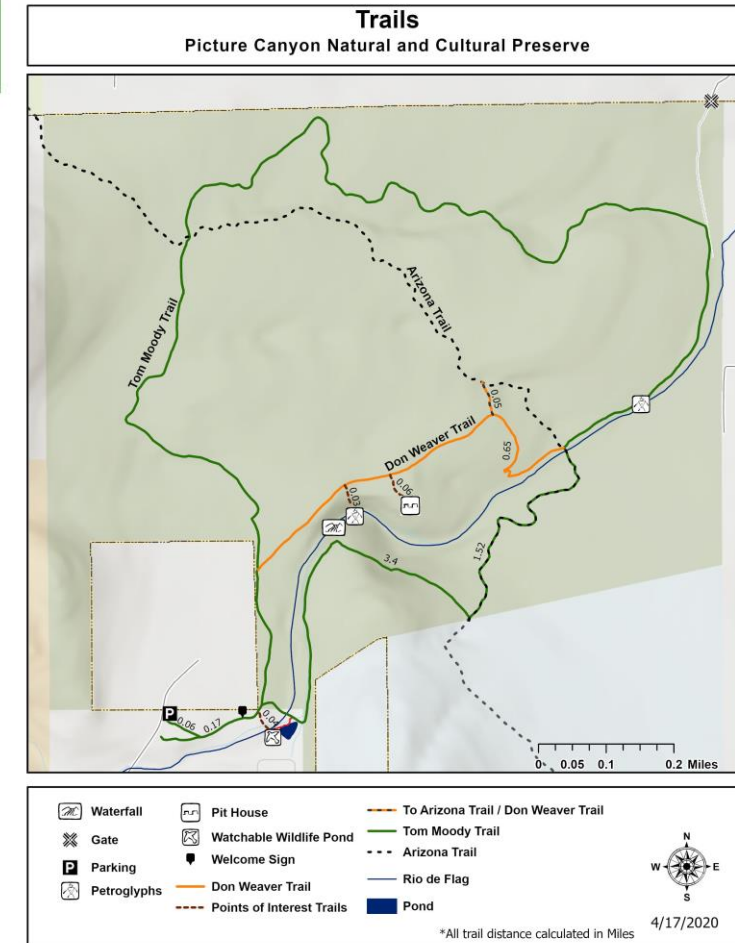
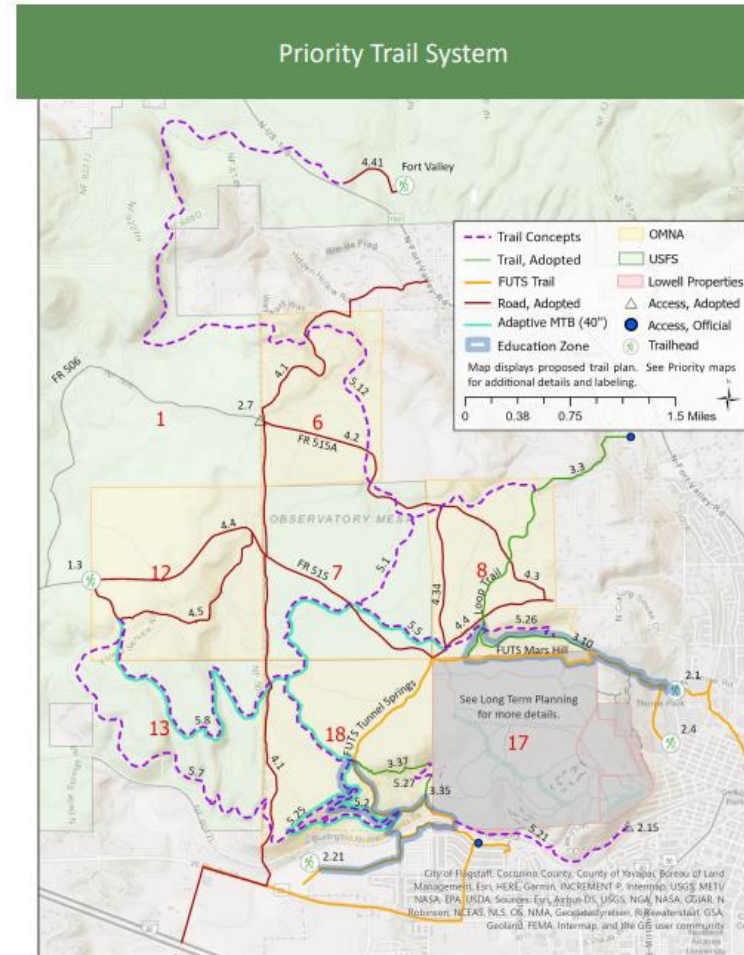
# New Amenities & Acquisitions

## Trails

Observatory Mesa  
Trail Plan

Picture Canyon  
Locus D trail viewing  
area

Picture Canyon  
bridge replacement

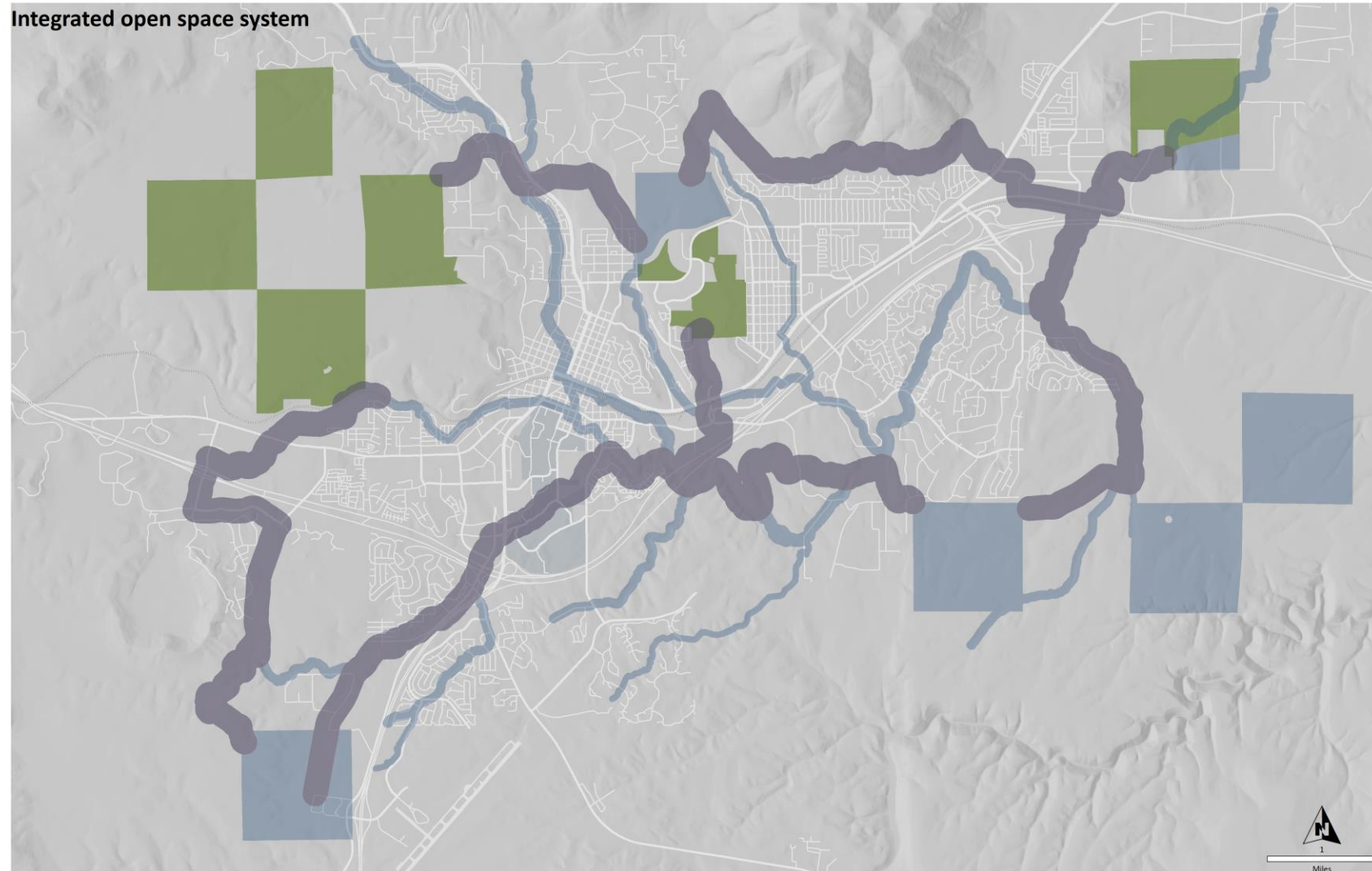


# New Amenities & Acquisitions

1. Regional Preserves: Large open space parcels that are essential to the integrated open space system; for example, Picture Canyon Natural and Cultural Preserve.
2. Connectors: Natural corridors that connect the integrated open space system; for example, FUTS, washes, hillsides, floodplains, neighborwoods, etc.
3. Complimentary Open Space: Smaller open space parcels that provide value to the integrated open space system; for example, those that increase equitable open space access, protect critical wildlife corridors, and/or preserve viewsheds.

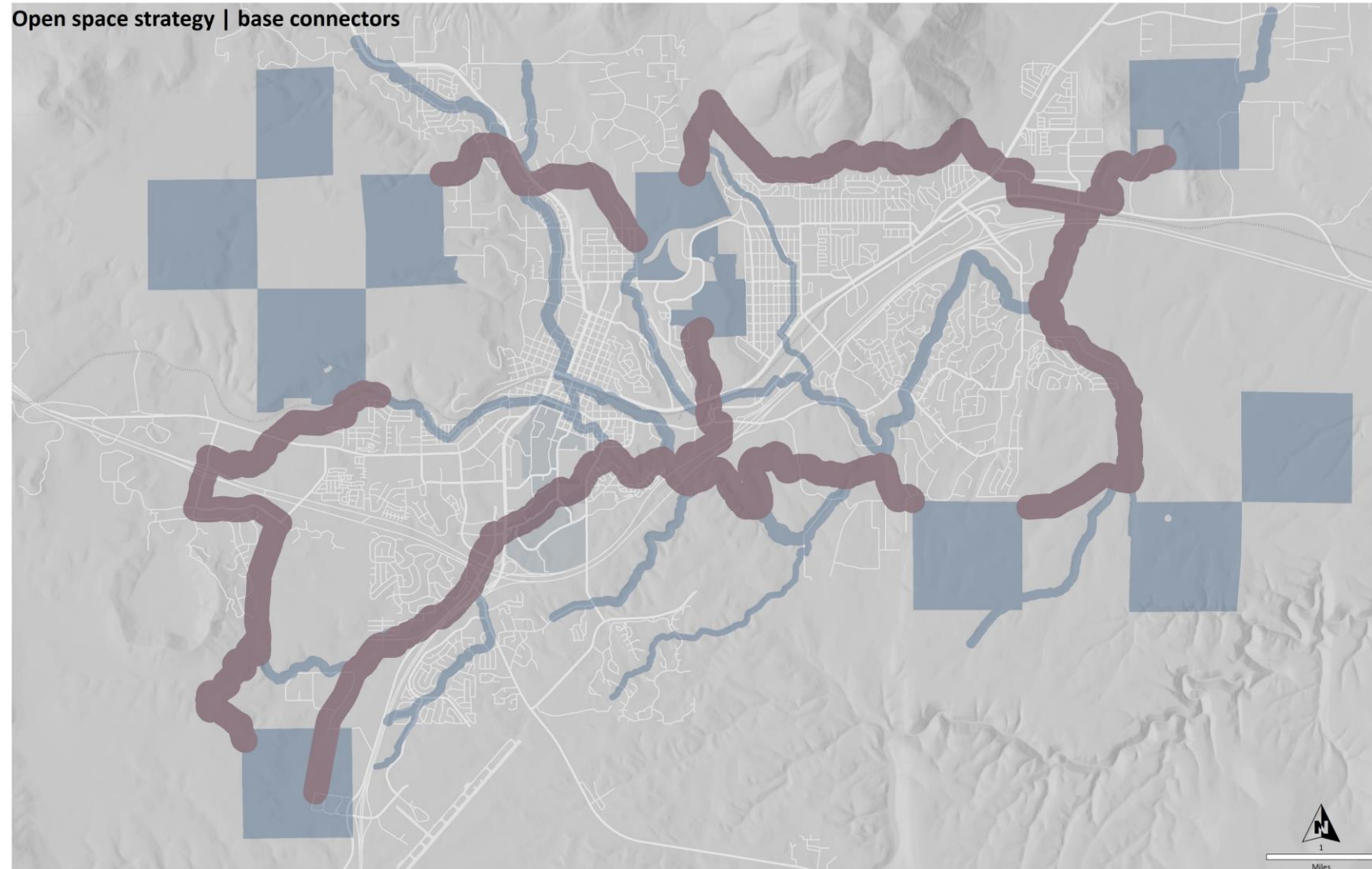
# New Amenities & Acquisitions

## Open Space System Map



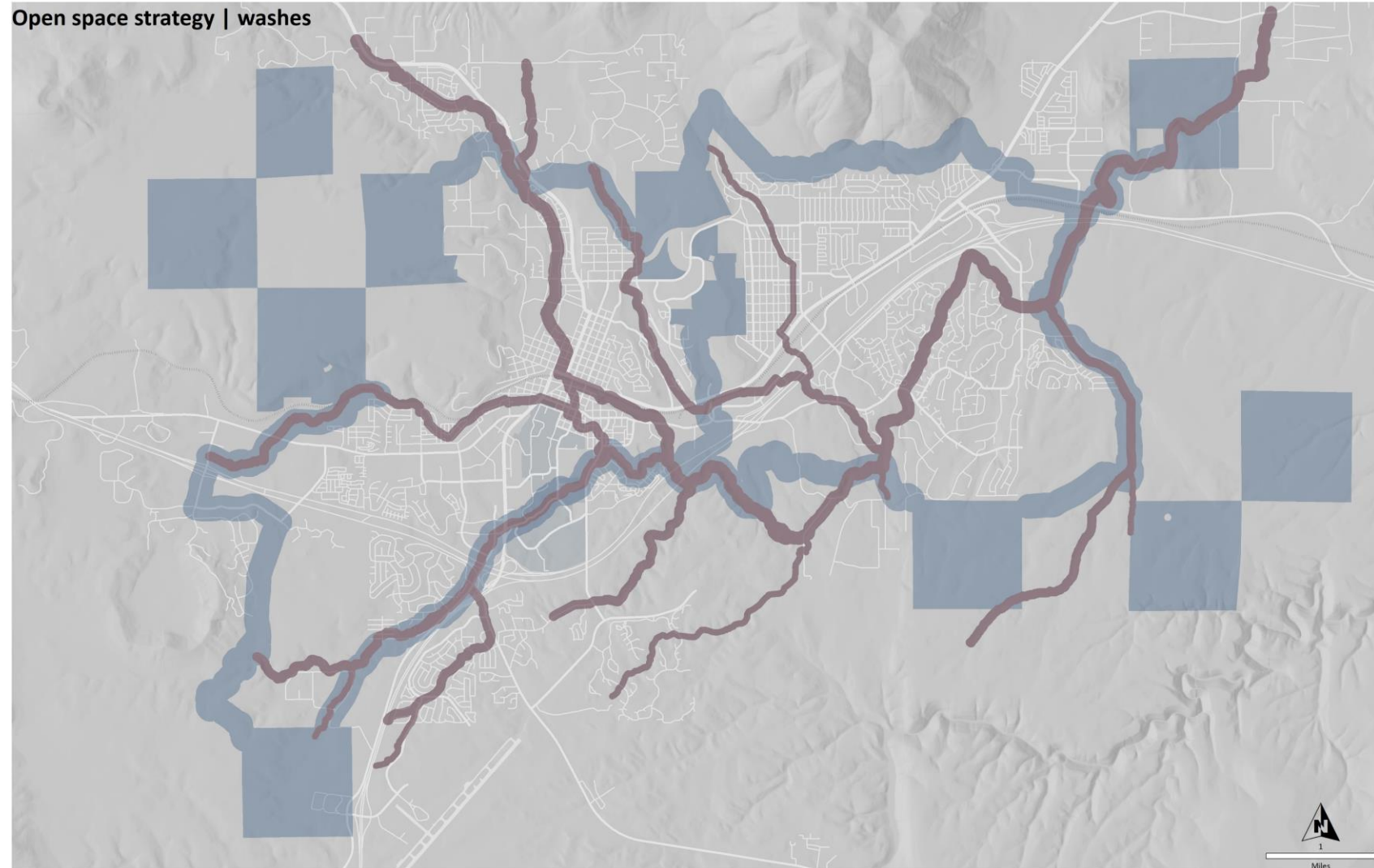
# New Amenities & Acquisitions

## Open Space System Map Base Connectors



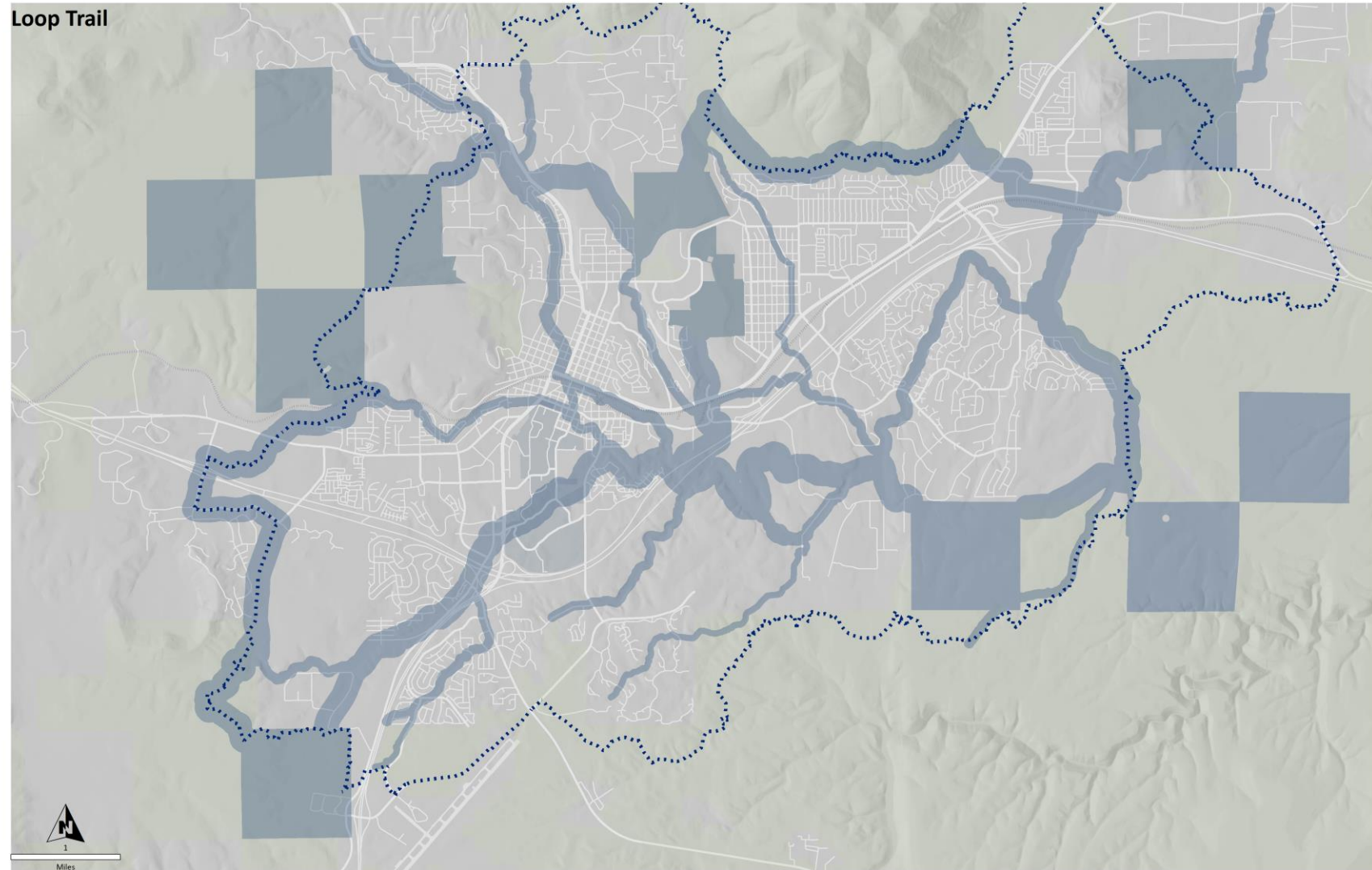
# New Amenities & Acquisitions

## Open Space System Map Washes



# New Amenities & Acquisitions

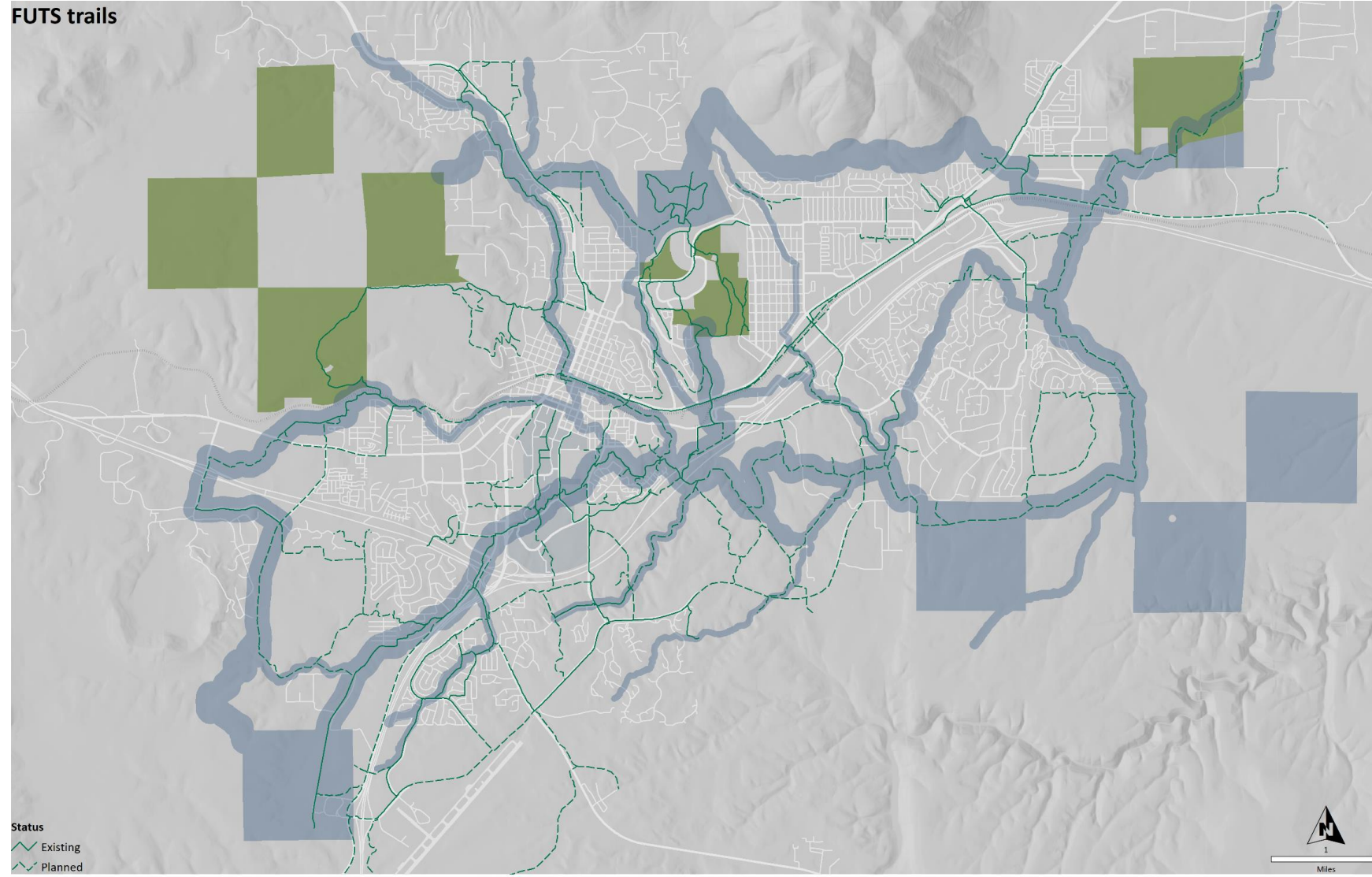
## Open Space System Map Loop Trail



# New Amenities & Acquisitions

## Open Space System Map FUTS

FUTS trails



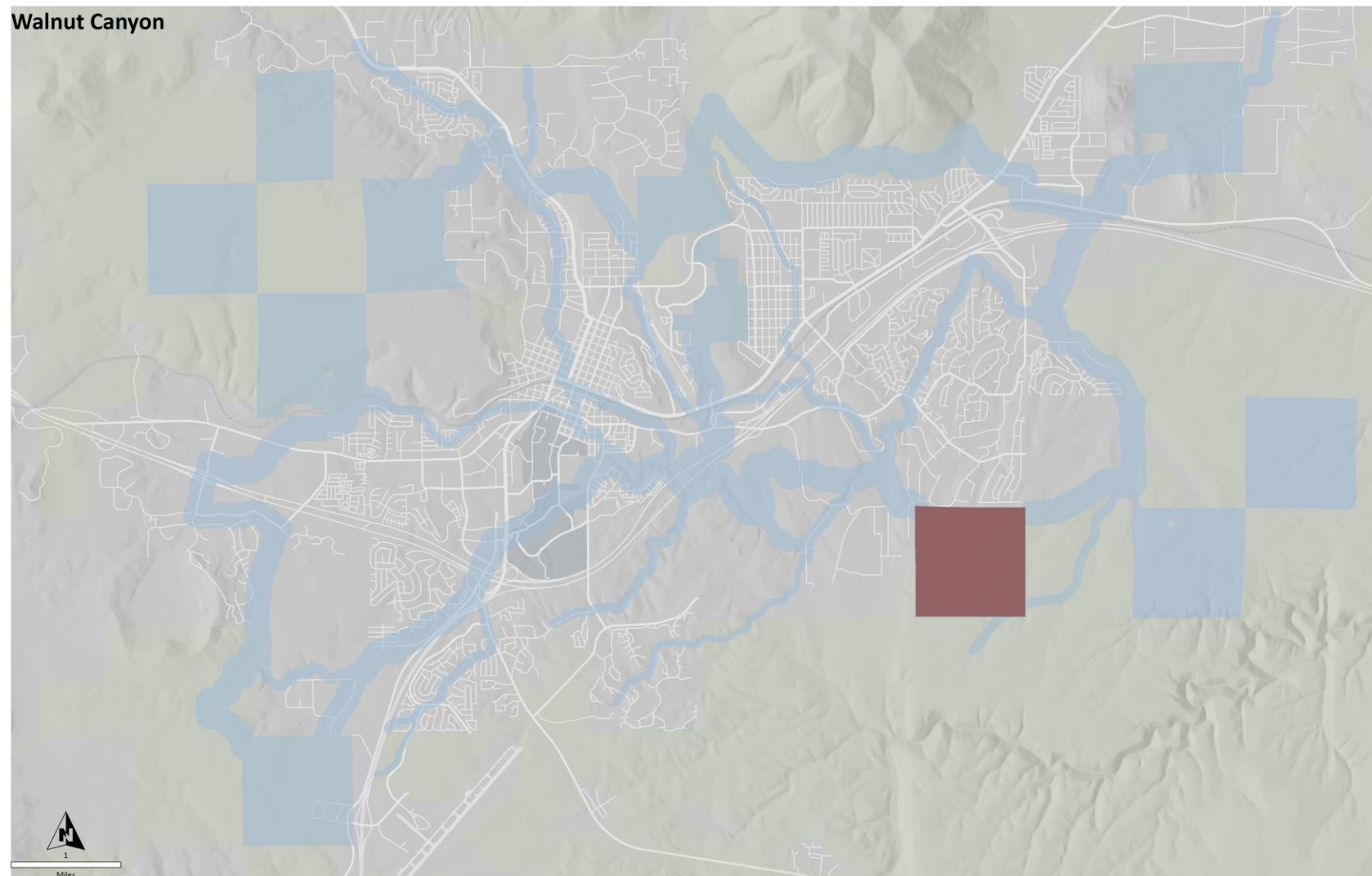
# New Amenities & Acquisitions

## Regional Preserves: Walnut Canyon (Section 30)

638 Acres

Estimated value: \$6.4  
million

Actual Cost:  
\$8 million



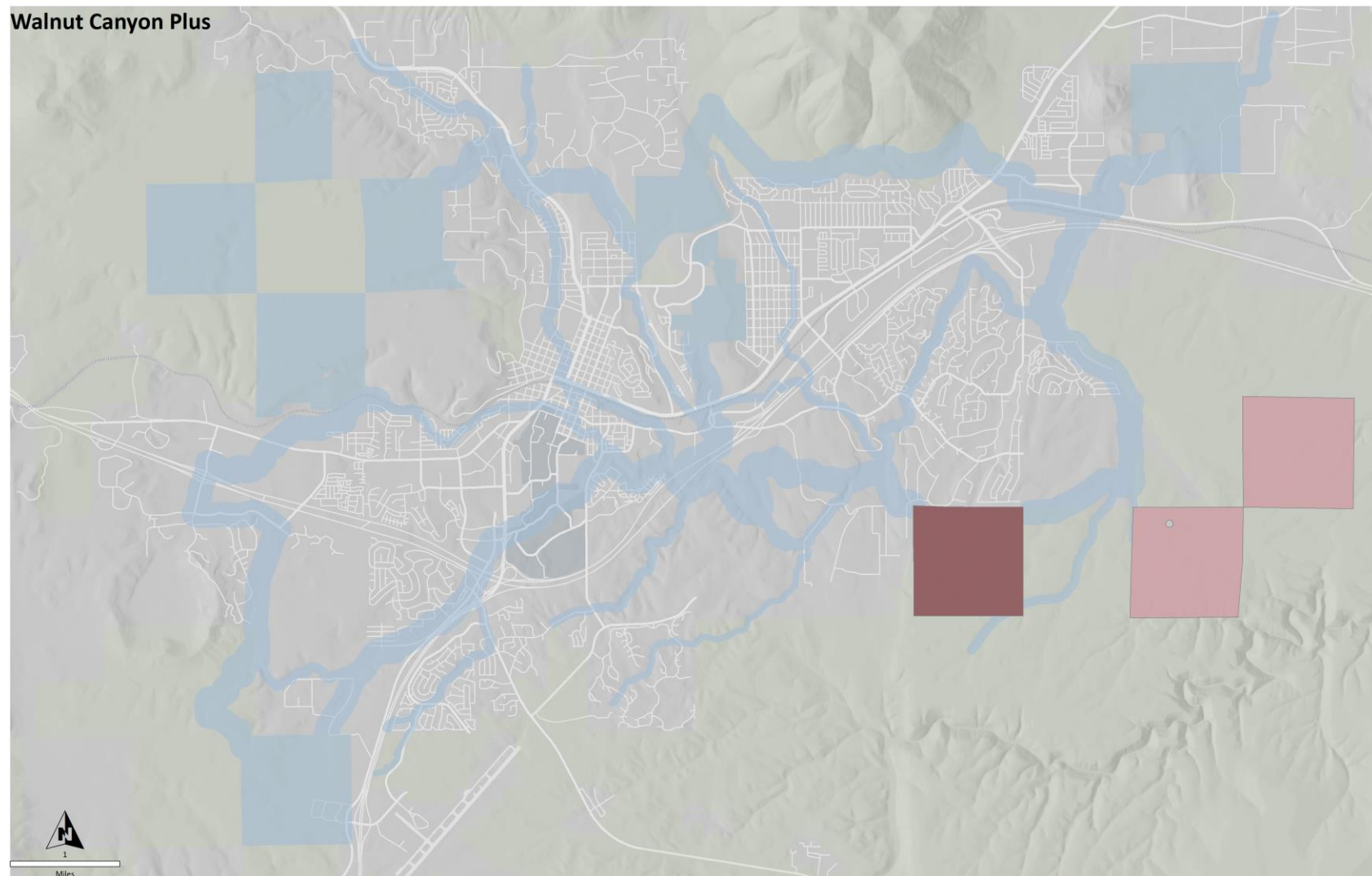
# New Amenities & Acquisitions

Regional Preserves:  
Walnut Canyon Plus  
Sections 22, 28, 30

1,934 Acres

Estimated cost: \$19.2 million/  
\$6.4 per section

Actual Cost:  
\$32 million



# New Amenities & Acquisitions

## Connectors: Example



Open space planning  
**Example**  
Rio de Flag - upper reach

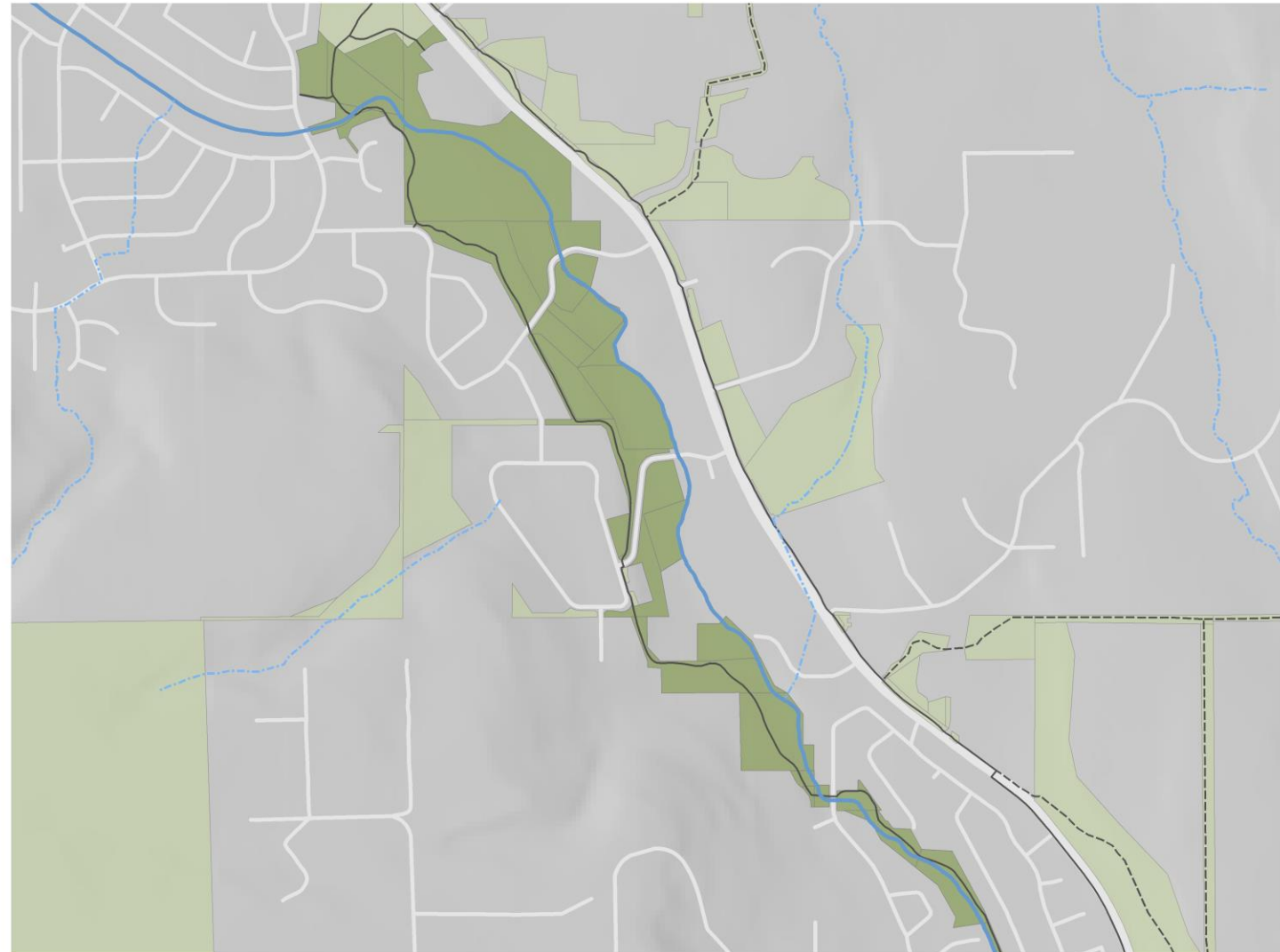


0.25

Miles

# New Amenities & Acquisitions

## Connectors: Example



Open space planning  
**Example**  
Rio de Flag - upper reach

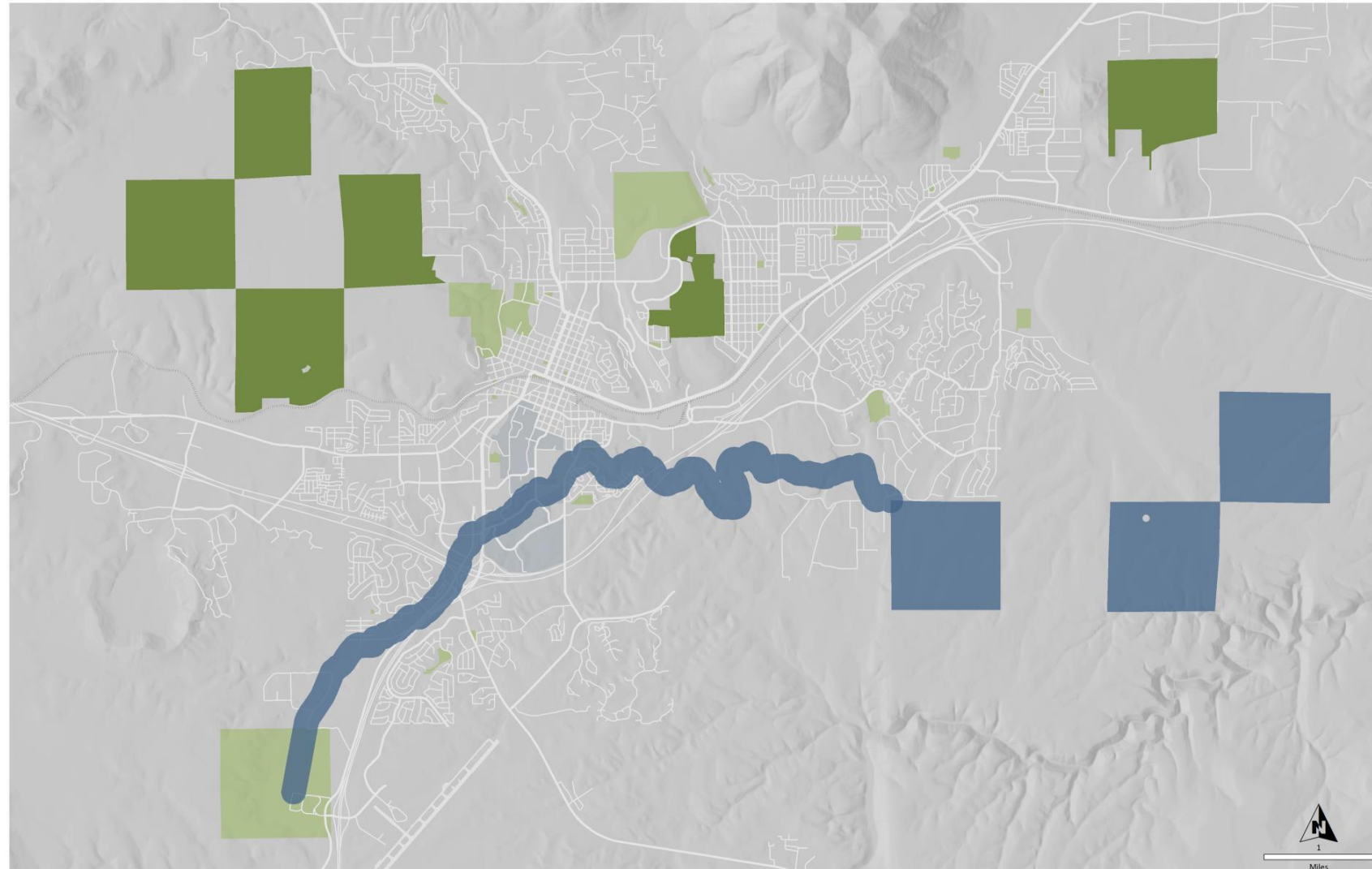


# New Amenities & Acquisitions

Connectors:  
Base

Priority Connector 1a:  
Walnut Canyon to Ft. Tuthill

Estimated cost: \$10,500,000



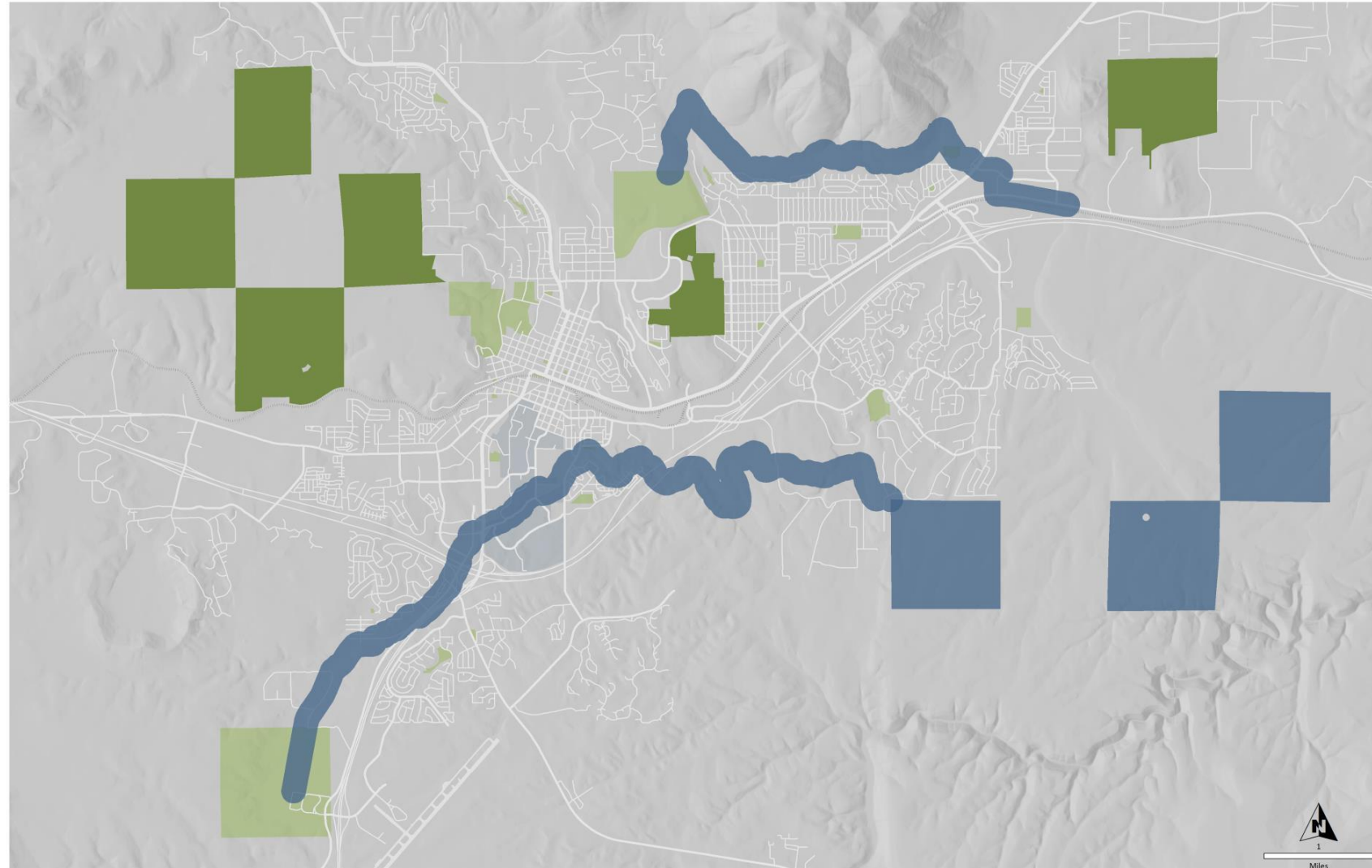
# New Amenities & Acquisitions

## Connectors:

Base

Priority Connector 1b:  
McMillan Mesa to Picture  
Canyon

Estimated Cost: \$0\*  
\*mostly USFS

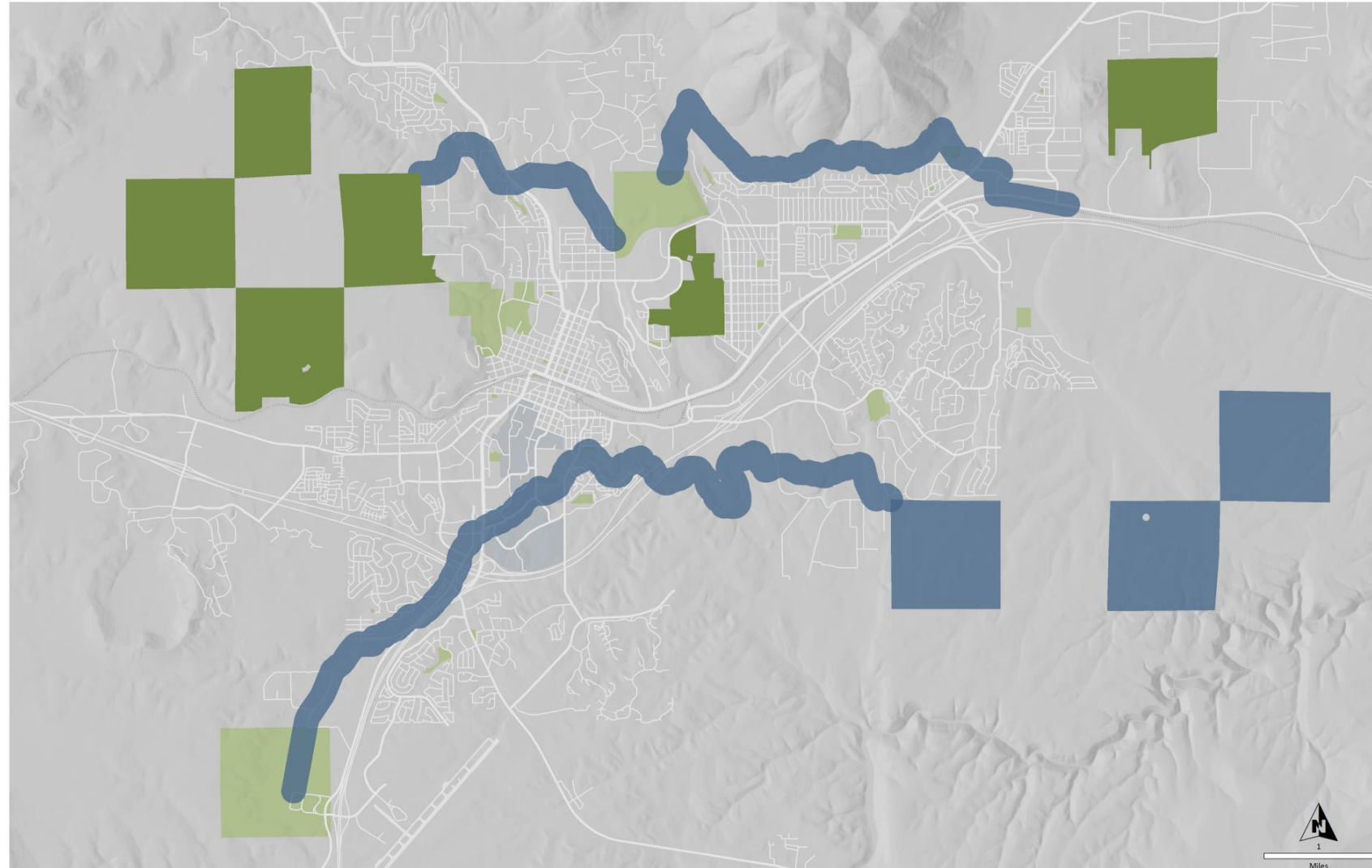


# New Amenities & Acquisitions

Connectors:  
Base

Priority Connector 1c:  
Observatory  
Mesa to McMillan Mesa

Estimated Cost:  
\$4,800,000

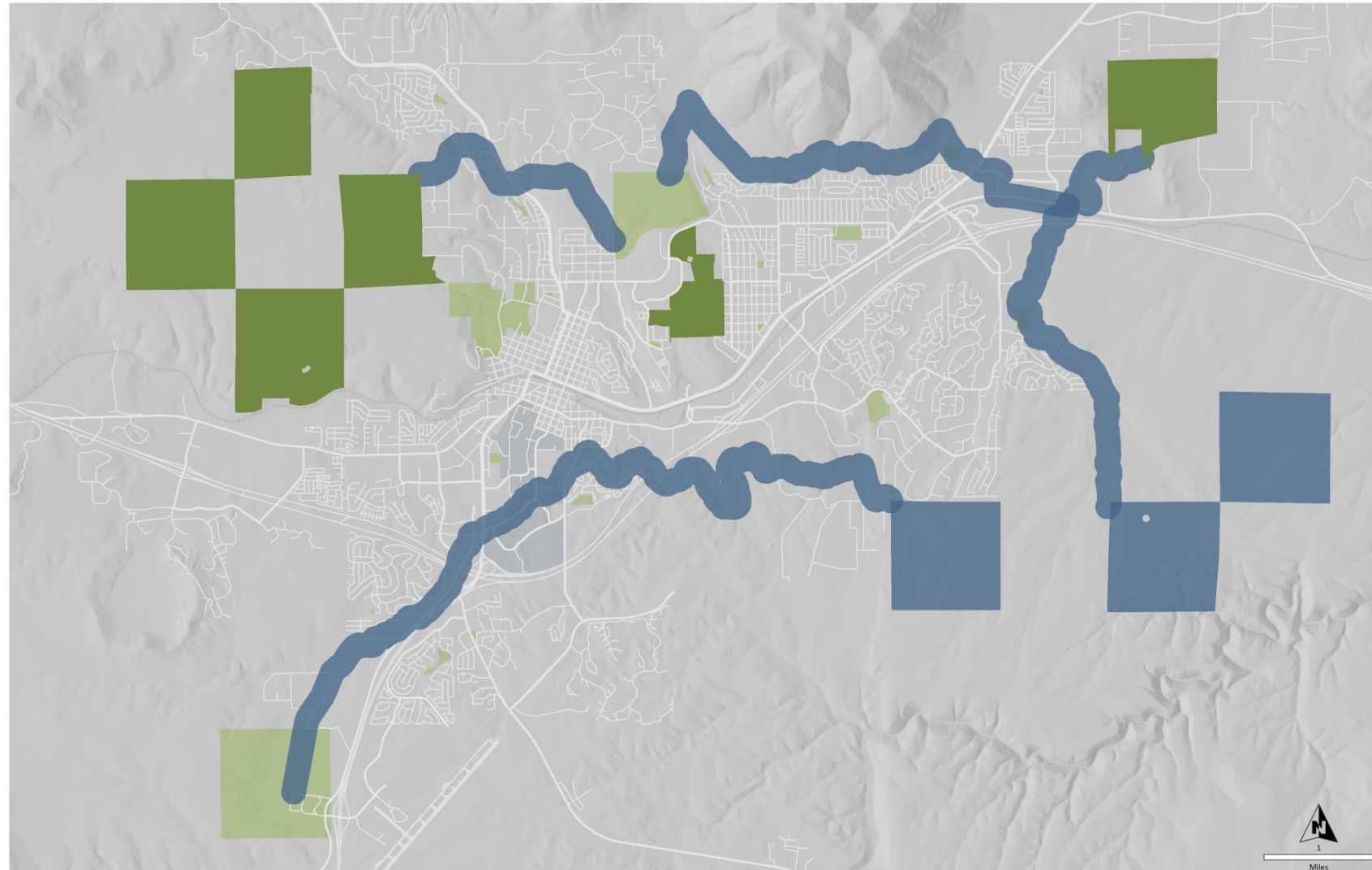


# New Amenities & Acquisitions

Connectors:  
Base

Priority Connector 1d:  
Picture Canyon to Walnut  
Canyon

Estimated Cost:  
\$5,800,000

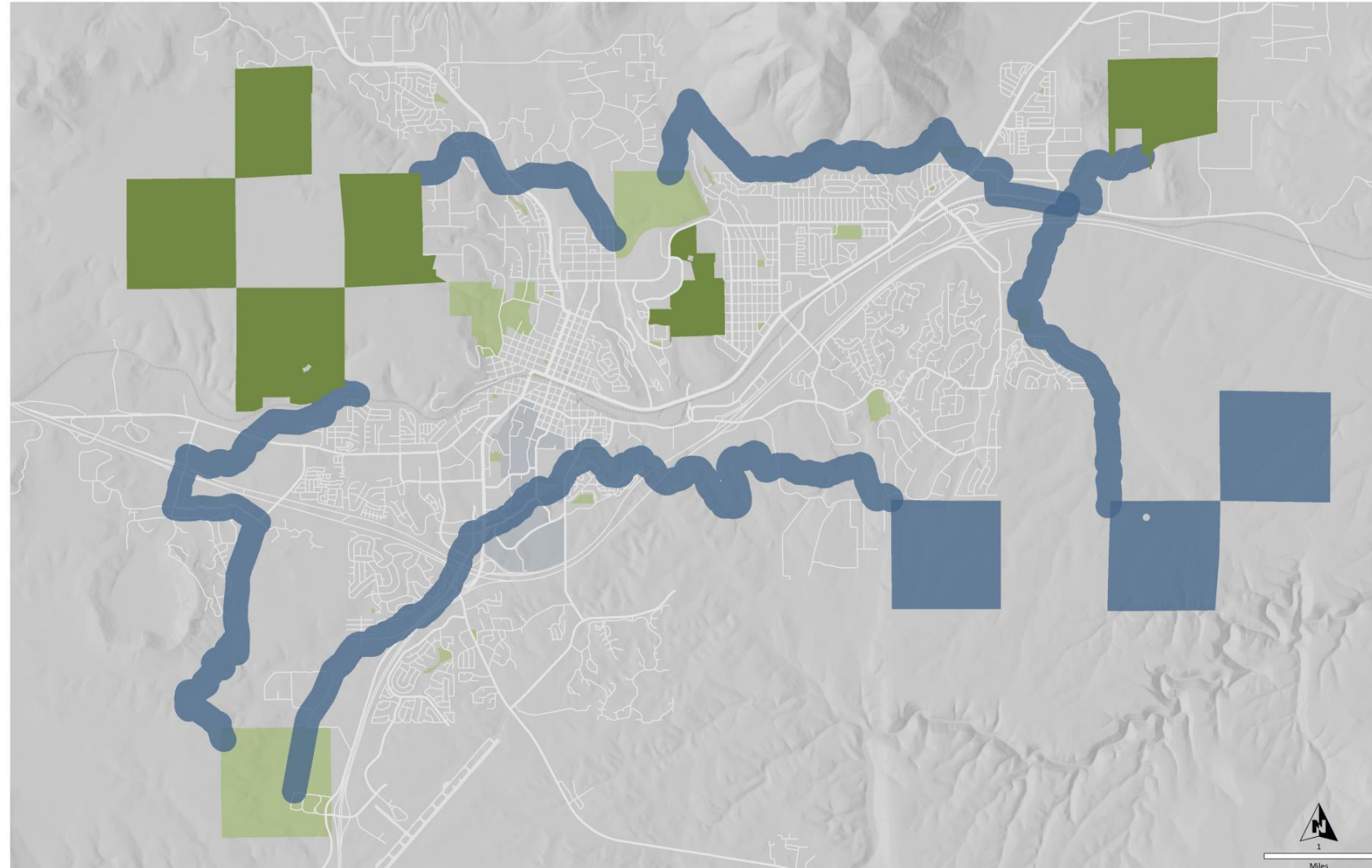


# New Amenities & Acquisitions

Connectors:  
Base

Priority Connector 1e:  
Observatory Mesa to Fort  
Tuthill

Estimated Cost:  
\$8,900,000

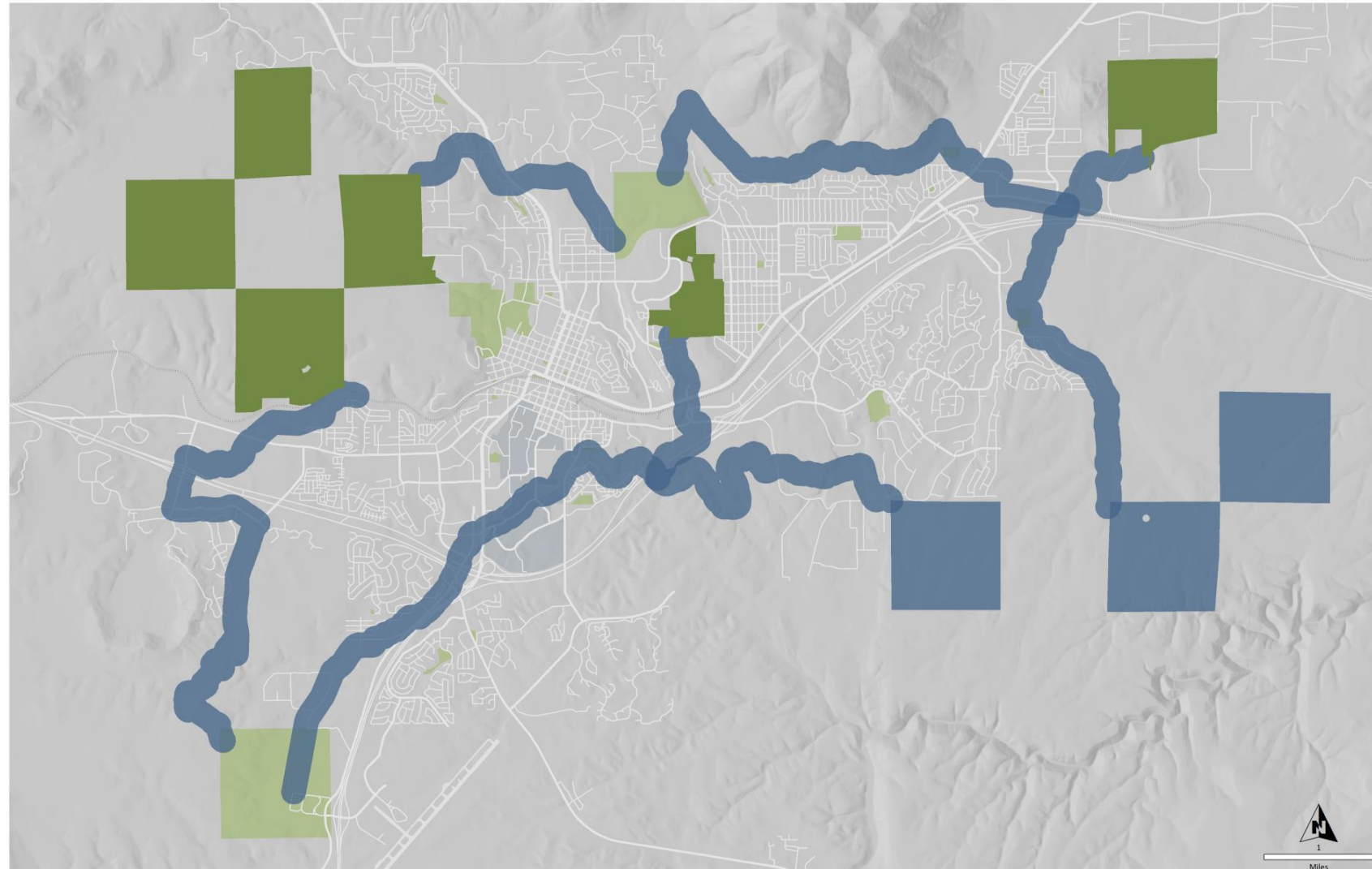


# New Amenities & Acquisitions

Connectors:  
Base

Priority Connector 1f: Inner-city  
McMillian Mesa to Walnut  
Canyon

Estimated Cost:  
\$8,000,000



# New Amenities & Acquisitions

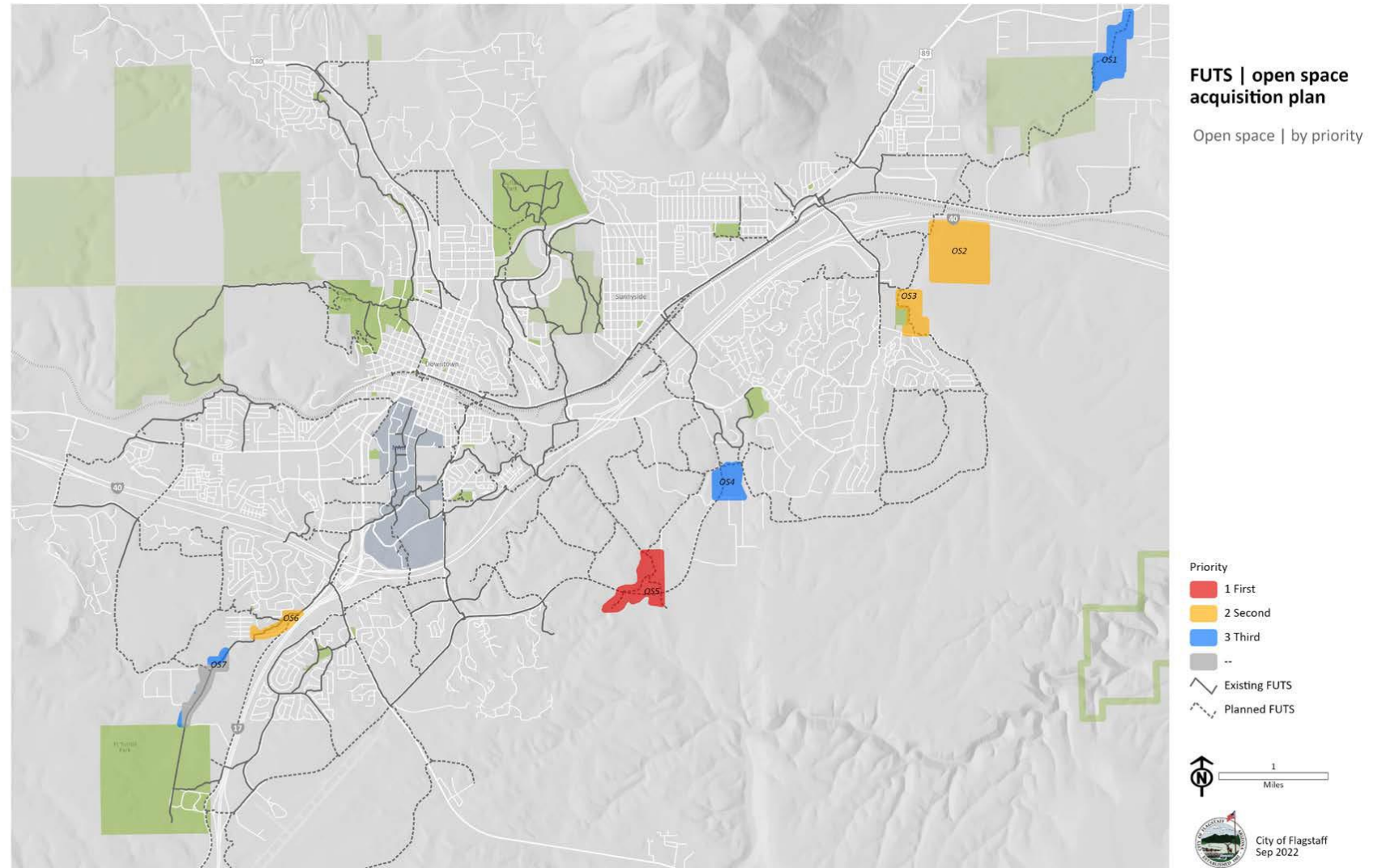
## 2004 Bond Fund Priorities

Open space areas					
Area	Count	Supports	Acres	Est cost	Priority
OS1	7	Open space	60.56	--	3 Third
OS2	1	Open space	166.67	--	2 Second
OS3	4	Open space	35.45	--	2 Second
OS4	1	Open space	39.50	--	3 Third
OS5	2	Open space	71.08	958,182	1 First
OS6	2	Open space	16.00	--	2 Second
OS7	12	Open space	31.65	--	--
			420.93		

# New Amenities & Acquisitions

## 2004 Bond Fund Priorities

- John Wesley Powell (Hoffman Tank) 7.33
- Continental 1 (5.33)
- Continental 2 (4.86)
- Fort Tuthill 1 (4.22)
- Townsend Winona (4.88)
- Fort Tuthill 2 (4)
  
- Picture Canyon FUTS Corridor
- Schultz Creek Trailhead



# New Amenities & Acquisitions

## 2004 Bond Fund Priorities

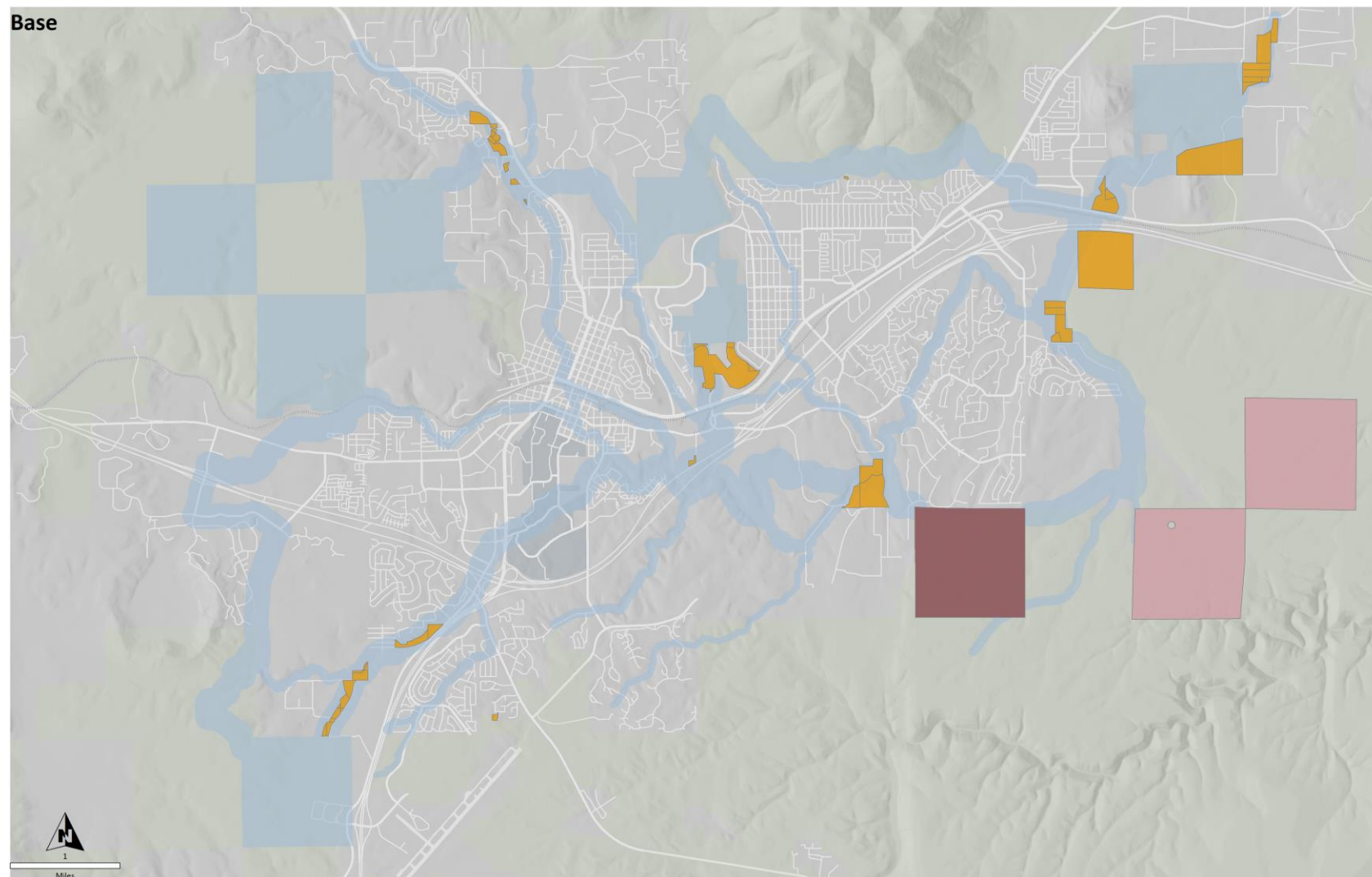
### Connectors:

#### Base

627 Acres

Estimated value:  
\$11.17 million

Actual Cost:  
\$13.9 million



# New Amenities & Acquisitions

## 2004 Bond Fund Priorities

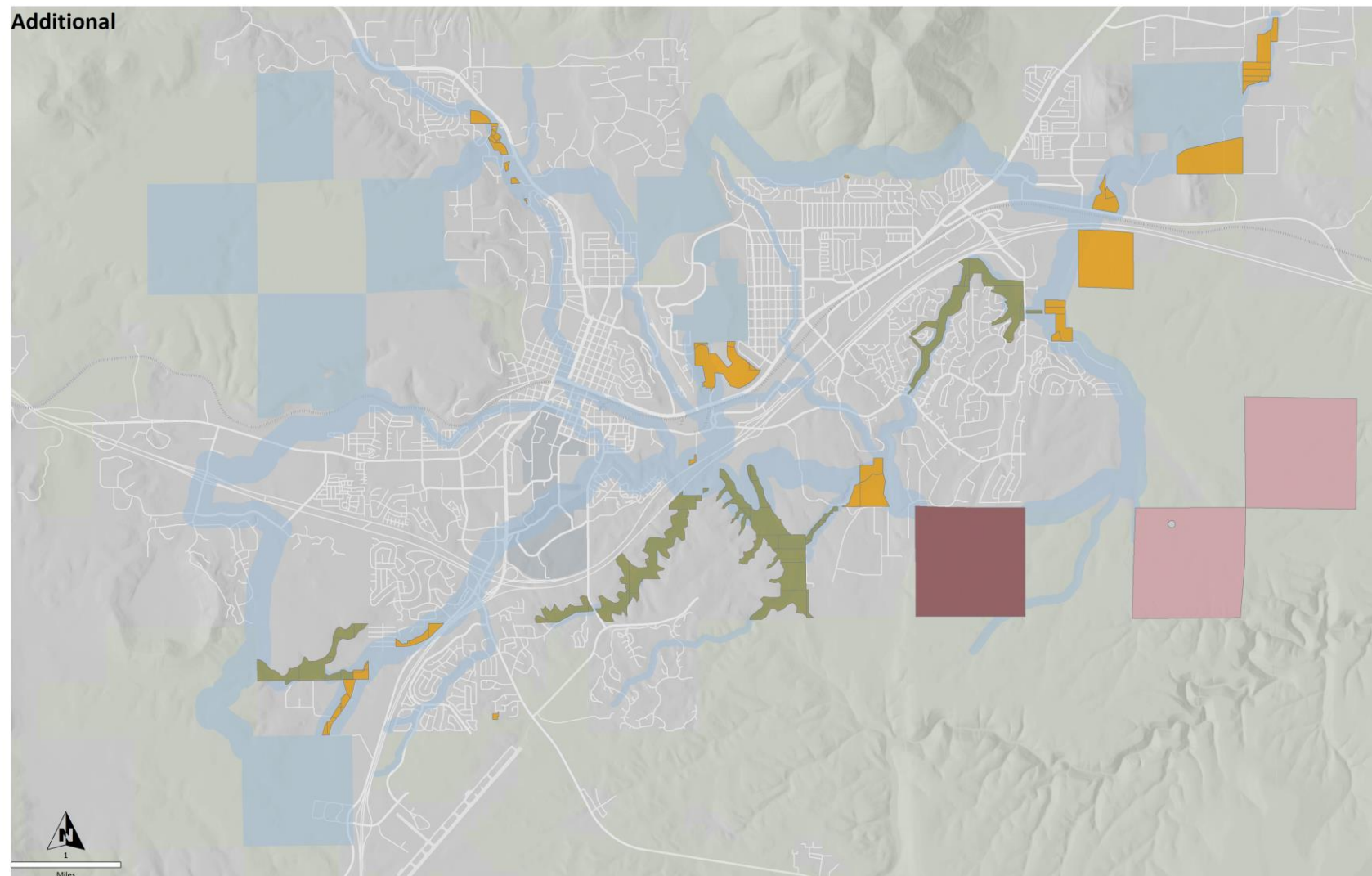
### Connectors:

### Additional Base

689 Acres

Estimated value:  
\$9.6 million

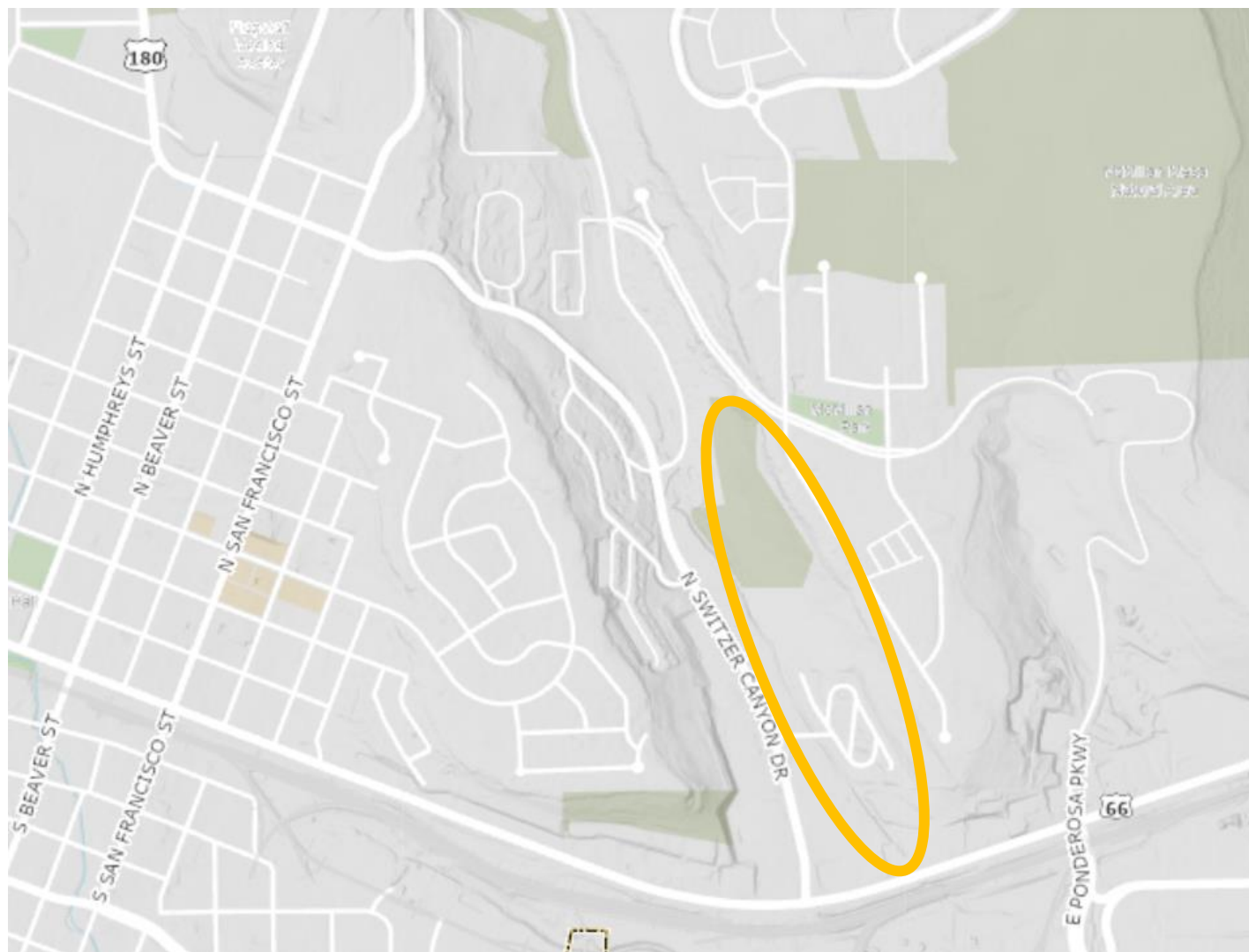
Actual Cost:  
\$12 million



# New Amenities & Acquisitions

Complimentary Open Space  
(property acquisition, rezones,  
easements)

Switzer Complimentary OS example  
Schultz Creek Trailhead



# New Amenities & Acquisitions

Open Space System

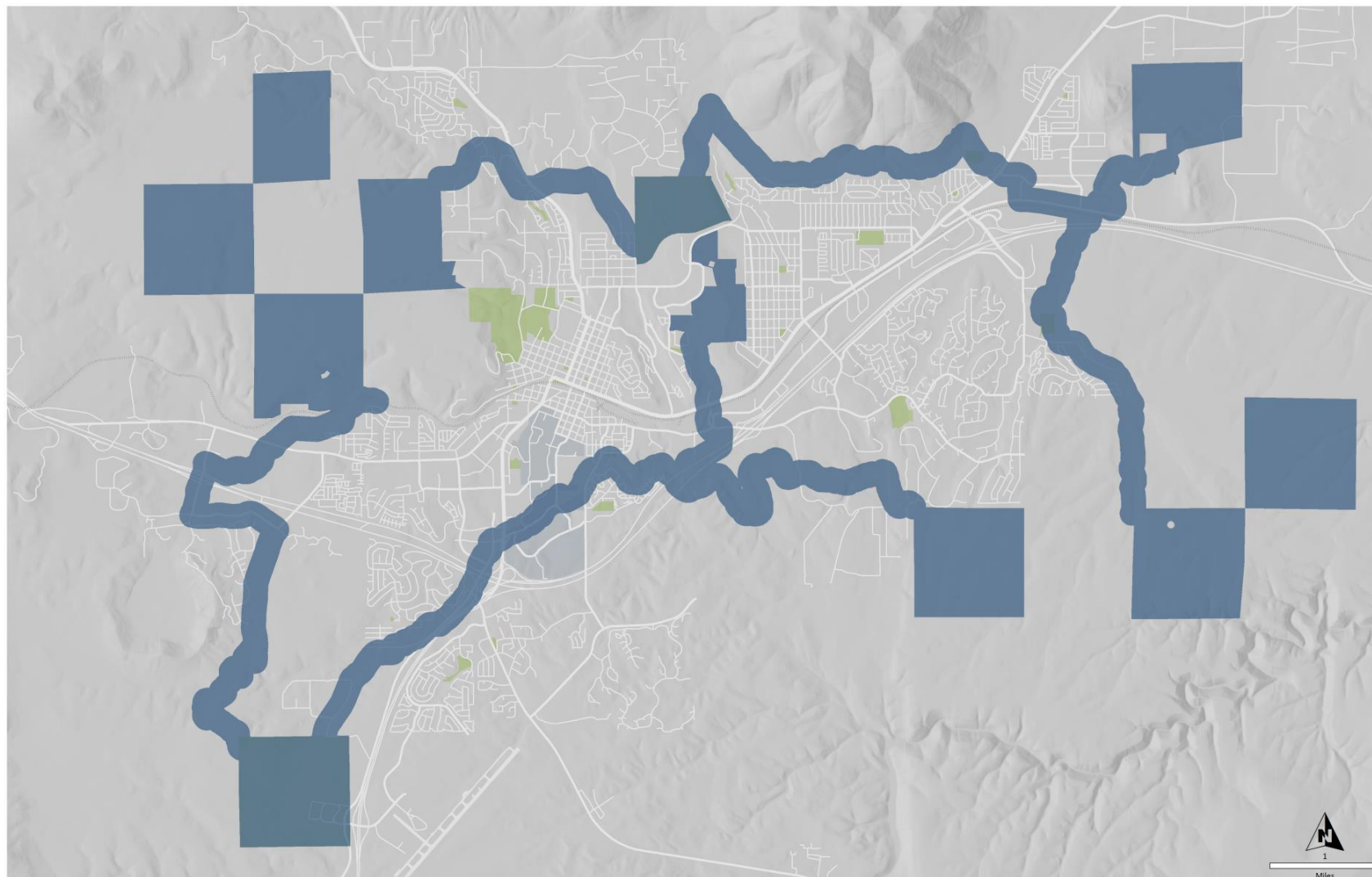
Integrated  
System Acquisition:  
\$57,000,000

Or

Integrated  
System with Reduced  
Acquisition: \$38,000,000

Or

Walnut Canyon Corridor  
ASLD Only: \$19,200,000





# Discussion

What is our approach?

How do we want to rank or prioritize?

Community impact, future cost savings/revenue generation, less impact to ongoing budget - spend now save later?

Each Commissioner creates a priority list

What grants (types) can supplement?

Do we separate deferred maintenance from new?