

# Flagstaff Regional Plan Update for 2045

Sara Dechter, Melissa Shaw, and a  
cast of a hundred other staff





# Process for Updating the Plan

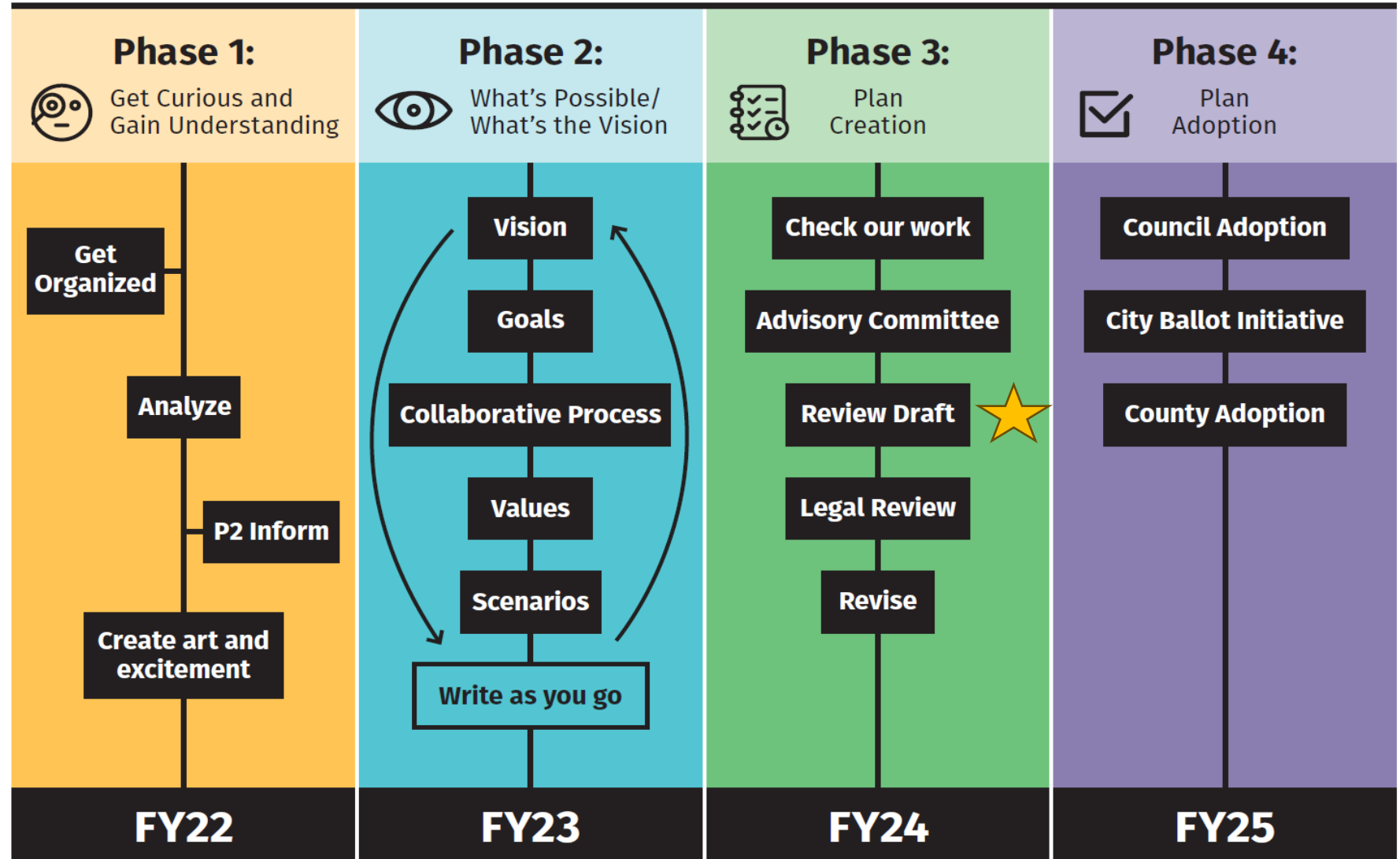


## Levels of Public Participation

Plan Development & County Adoption:  
*Collaborate*

City Adoption:  
*Empower*

## Regional Plan 2045 Update Process



# Regional Plan Committee



- Endorsed the plan on Mon, Sept 30
- Selected by the City and County Manager based on recommendations from elected officials.
- Held 15 meetings over 9 months.
- Meetings were open to the public including formal boards, commissions and Council.
- Reviewed Chapter by Chapter and then the whole document





# 60-day public review

## October

Oct 20

60-day Review Starts

Oct. 21

Opening Webinar

Staff – Collecting case studies

## November

Nov 13, 14, 16 & 18  
Community Workshops

Staff – Testing case studies

## December

Dec 4 Closing Webinar

Staff – Create case study report and suggested edits

Review Period Ends Dec 19  
at 5pm

**Office Hours on Fridays from 11am to 2pm (except 11/29)**

**Board, Commission and Council discussions at their regular meetings**

# Plan comments hosted on Konveio

An easy to use, interactive document comment platform.



## Public Engagement for Coconino County

### 60-Day Public Review Draft Flagstaff Regional Land Use Plan 2045

NOTE: This document is separated into chapters that can be navigated using the buttons at the bottom or the pulldown menu at the top of this page. Note that the hyperlinks internal to the document do not function in this format. If you would like to view the entire document go to this site: <https://www.flagstaff.az.gov/DocumentCenter/View/84813/Flagstaff-Regional-Land-Use-Plan-60-Day-Public-Review-Draft>.

Chapter 1: Introduction | Page 1 of 18 | Type to search | Comment | Drag

Click anywhere in the document to add a comment. Select a bubble to view comments.

The cover page of the Flagstaff Regional Land Use Plan 2045. It features a vibrant, abstract background with swirling colors of pink, yellow, orange, red, and blue. The text "FLAGSTAFF REGIONAL LAND USE PLAN 2045" is prominently displayed in a large, serif font, with "2024 Public Review Draft" written below it in a smaller, sans-serif font. On the right side, there are two circular icons: a speech bubble and a trash can, indicating interactive comment functionality.



# Focus of the Plan – 5 Priorities

- Create more housing attainability in all the Region's neighborhoods and centers to mitigate displacement and reduce housing costs.
- Create mixed-use, denser neighborhoods that support a variety of housing types, and active transportation.
- Reduce community-generated climate pollution and protect air quality.
- Protect the Region's significant natural and cultural resources.
- Expand the Region's preparedness and resilience to hazards and climate change.



# Regional Plan Chapters

1. Introduction
2. How the Plan Works

## ***Policy Section***

3. Goals and Policies (all topics)
4. Growth and Land Use Framework

## ***Implementation Section***

5. Social and Economic Systems
6. Transportation
7. Resource Stewardship and Resilience
8. Parks, Recreation and Open Space
9. Water Resource Management
10. Energy
11. Infrastructure and Public Safety



# Policy Section

- Goals - desired results or future conditions that the community envisions and commits to achieve.
- Policies - courses of action to achieve the stated goals that guide decision making. Policies may be text or maps identified in the Plan.
- Land Use Categories – each parcel on the Future Growth Illustration is given a land use category. Each category has guidelines on what is appropriate in that area.



# Implementation Section

- Implementation Guidelines - are assumptions and corresponding principles that guide how the goals and policies are interpreted and applied.
- Action Items - strategies, projects, procedures, actions, or programs that implement the goals and policies.



# Maps



- Policy section
  - Policy Maps – Maps that define the geographic application of or set a policy such as future trail locations or future land uses.
- Implementation section
  - Information Maps – Maps that provide context and information to help understand goals, policies and the implementation section. These maps do not set policy and can be updated administratively.

R5E

R6E

R7E

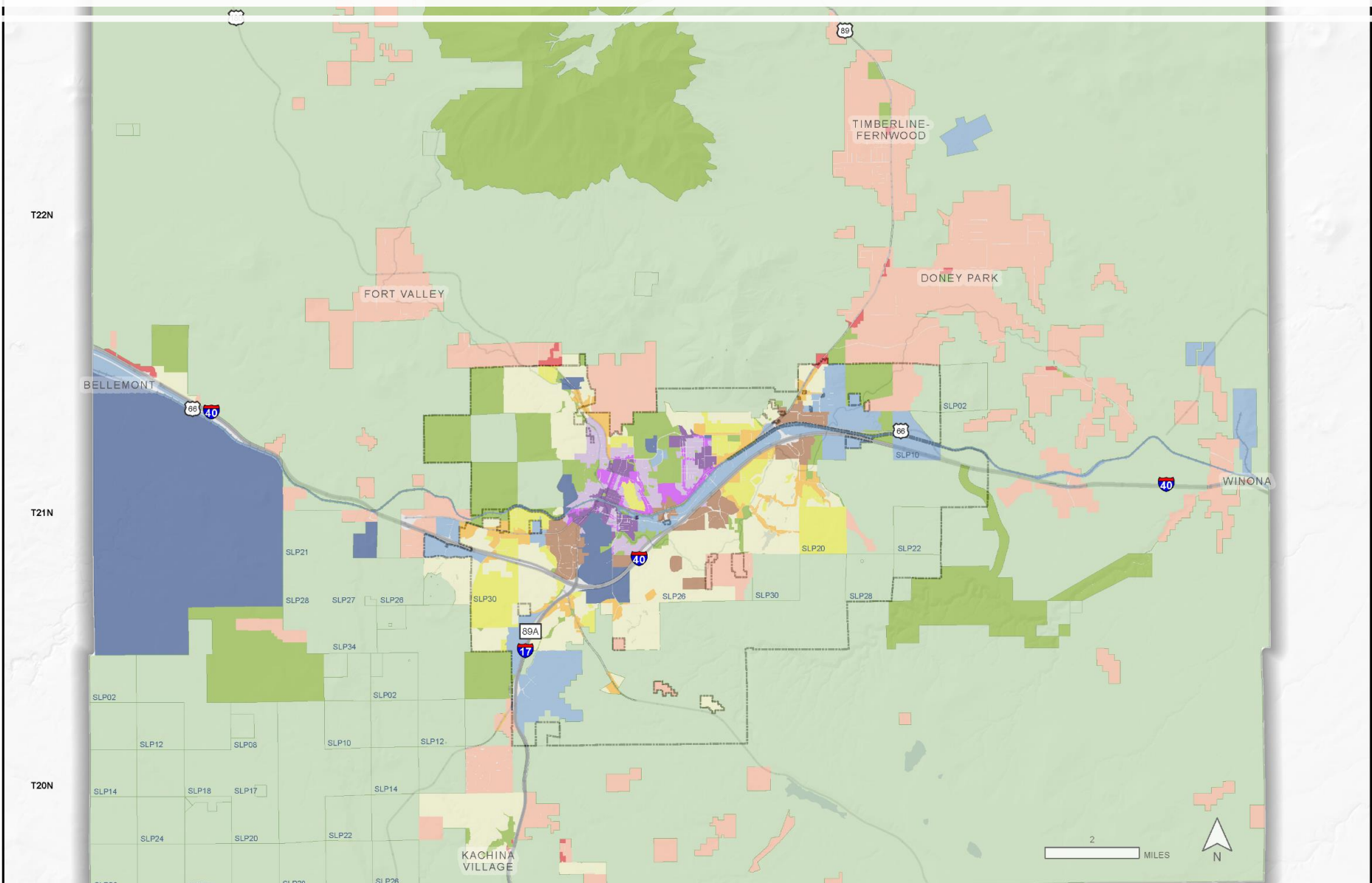
R8E

R9E

# Future Growth Illustration

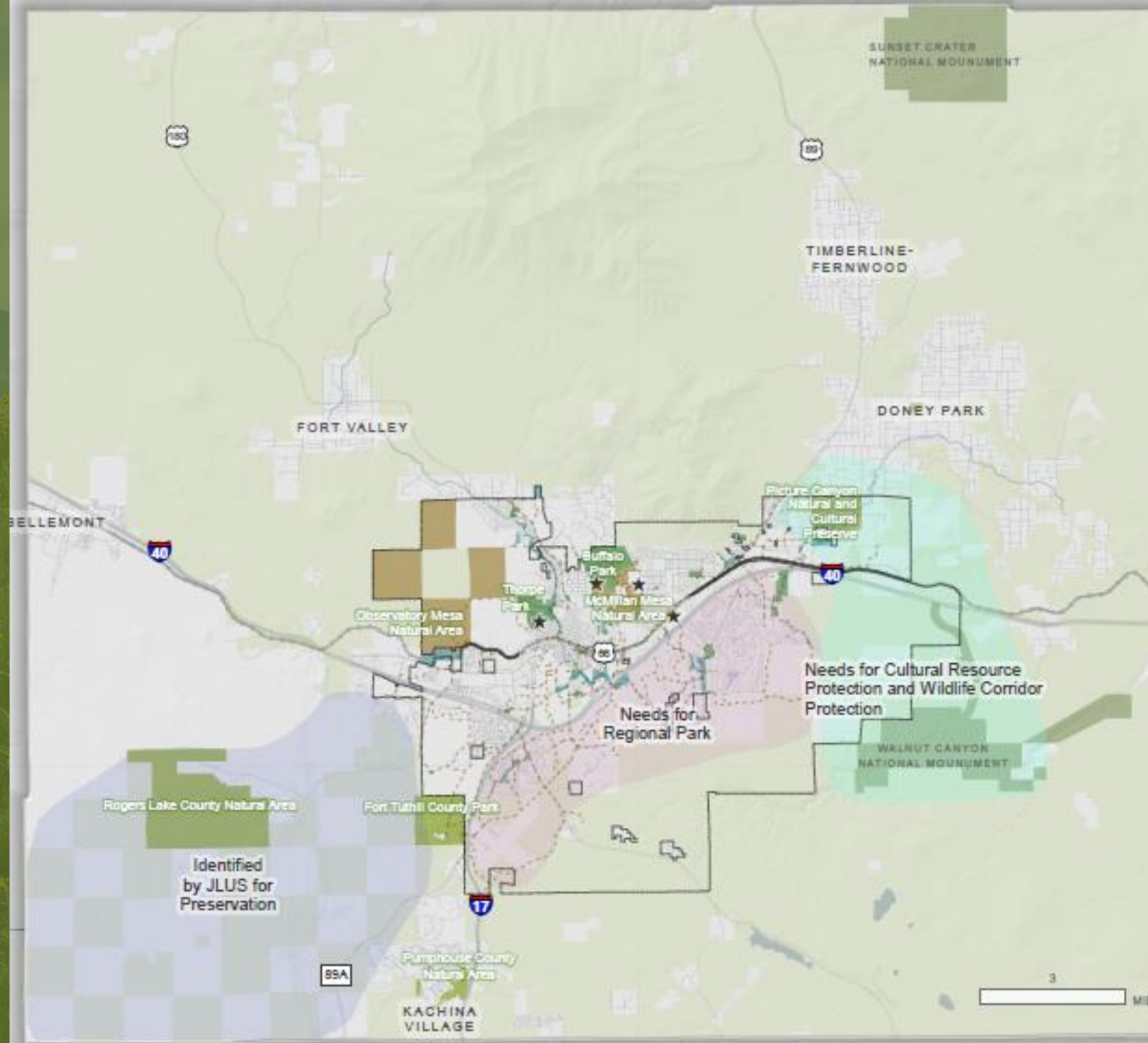
## FUTURE GROWTH ILLUSTRATION

- Urban Center
- Suburban Center
- Rural Center
- Urban Corridor
- Suburban Corridor
- Employment District
- University/Research District
- Parks/Open Space
- Federal Lands and Working Landscapes
- Urban Neighborhood
- Suburban Neighborhood – High Density
- Suburban Neighborhood – Medium Density
- Rural Neighborhood
- CoF Boundary



# Future Regional Parks and Open Space Needs

Neighborhood and urban park needs have criteria. Locations can be identified in the PROSE Master Plan.





# Parks, Recreation and Open Space

- Goal PROS – The regional system of parks, open spaces, and community centers that supports the Region’s public and environmental health provides diverse recreational needs, is accessible to residents and visitors, and is interconnected by trails and greenways between Flagstaff, regional open space, and other County communities.
- Policy PROS.1: Incorporate and highlight the Region’s defining landscapes and vistas through landscape design in trails, parks, and open spaces.
- Policy PROS.2: Focus the purchase and management of regional preserves and connector open spaces on protecting cultural or significant natural resources, while allowing for concentrated development in areas that support housing supply and climate action.
- Policy PROS.3: Provide urban parks and complementary open spaces that support livable and sustainable compact development.



# Parks, Recreation and Open Space

- Policy PROS.4: As greenfield sites are developed, ensure that new parks and open spaces have a balance of amenities, a flow with the natural and historical surroundings, are publicly accessible, and provide complementary amenities to existing public parks in the Region.
- Policy PROS.5: Plan and design regional parks that support larger public events sustainably and support diverse recreational opportunities within the same park.
- Policy PROS.6: Create and maintain opportunities for access to recreation and community centers through adaptive reuse of appropriate buildings, partnerships with non-profit organizations and neighborhoods, and new construction identified in master plans.



# Implementation Guidelines

## Topics

- Orientation of features and viewshed protection
- Coordination for conservation and preservation
- Public access, parking, events and trail hubs
- What kind of parks and open space we want to acquire
- Creating new parks and open spaces
- Use of existing master plans
- Increasing energy efficiency and adaptability of buildings
- Community Centers

## High Priority Action Items

### Item

Leverage available funding to negotiate for the purchase of greenfield lands for parks, open space, and trails in the JW Powell Boulevard extension area.

Consider pursuing a County and/or City bond or finance mechanism to fund park, recreation, and open space initiatives, operations, and maintenance.

Engage with the ASLD to create opportunities for future development and open space preservation, with a particular emphasis on the [JLUS](#) findings.



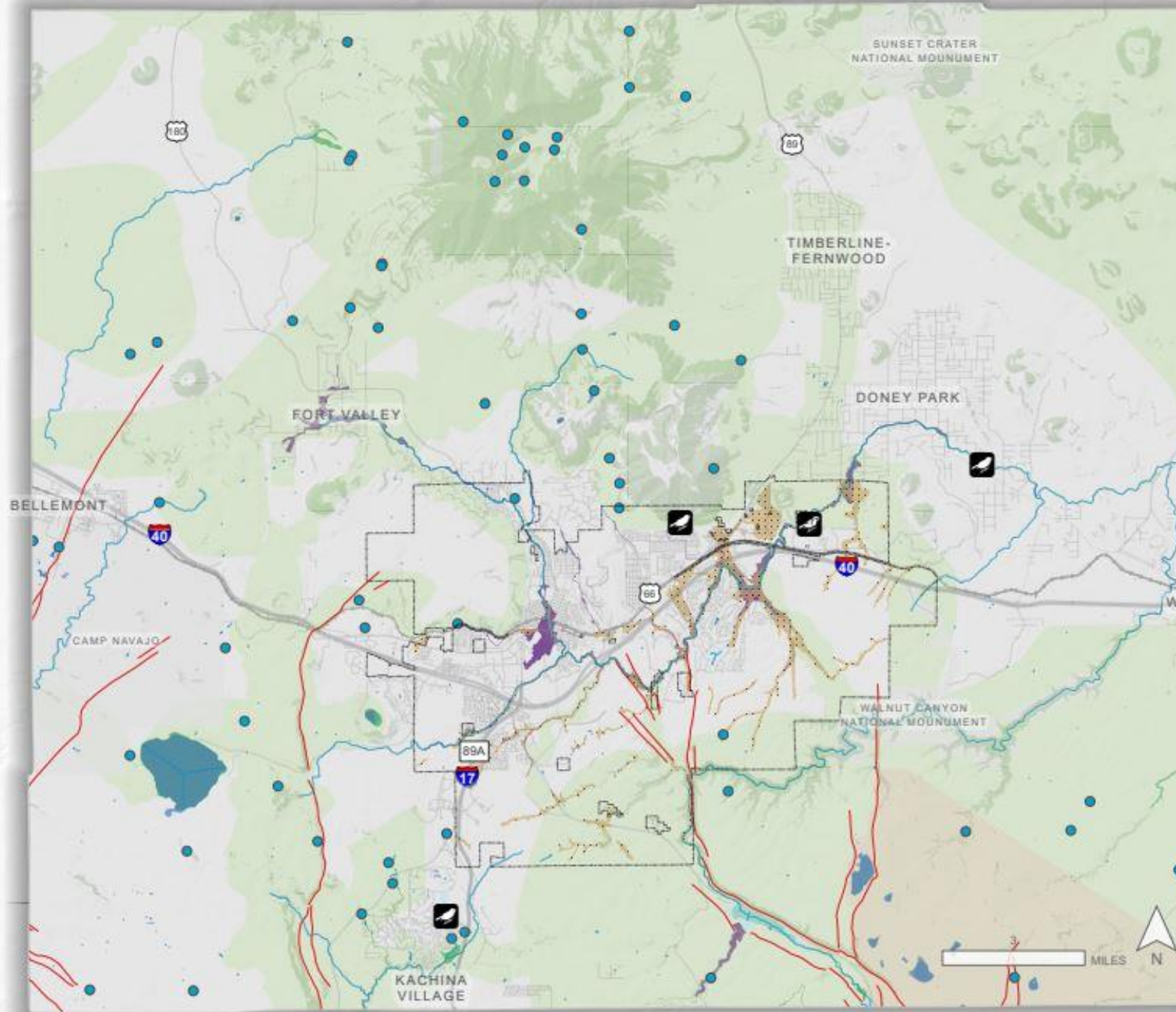
# Integration in Other Chapters

Goal GM: Future development and reinvestment patterns in the Region integrate the community values of the importance of open space preservation, significant natural resources, the scarcity of water, the need to adapt to and avoid climate change, the Region's unique sense of place, and of meeting the needs of current and future residents and businesses.

Policy RS.8: Incorporate the protection, conservation, and restoration of significant natural resources (see Information Maps 7-2 and 7-3) in the development of regulations and property acquisition, particularly for sensitive and uncommon habitats, and landscapes that support the health and resilience of regional wildlife and plant populations, ecosystems, or Carbon Dioxide Removal (CDR).

# Significant Natural Resources Map

Associated with a set of  
guidelines for protecting  
significant natural  
resources





# Resource Guidelines

## Mapped

- Geologic faults
- Audubon Bird Sanctuaries and other bird habitat areas
- Steep slopes and rocky outcroppings
- Riparian areas
- Wildlife corridors

## Unmapped

- Gunnison's prairie dog colonies
- Large stands of Ponderosa Pines
- Rare plants

# Ways to Participate

City of Flagstaff Contact

Sara Dechter, (928) 213-2631  
sdechter@flagstaffaz.gov

Coconino County Contact

Melissa Shaw, (928) 679-8868  
mshaw@coconino.az.gov

- Review the plan and send in comments
- Participate in collaborative review on Konveio
- Attend a Workshop or office hours
- Board or Commissions can form subcommittees and submit comments
- Individual member can also submit comments.





# What Happens after the 60 day review?

1. Analyze and incorporate public comments and staff testing outcomes
2. Bring back complex issues to the Committee
3. Complete a final legal review
4. Send the document to the Board of Supervisors, City Council and Planning and Zoning Commissioners for a retreat in March
5. Conduct City public hearings
6. Ballot initiative
7. Conduct County public hearings



Questions

