

Flagstaff Regional Plan Update for 2045

Sara Dechter, Melissa Shaw, and a
cast of a hundred other staff





Process for Updating the Plan

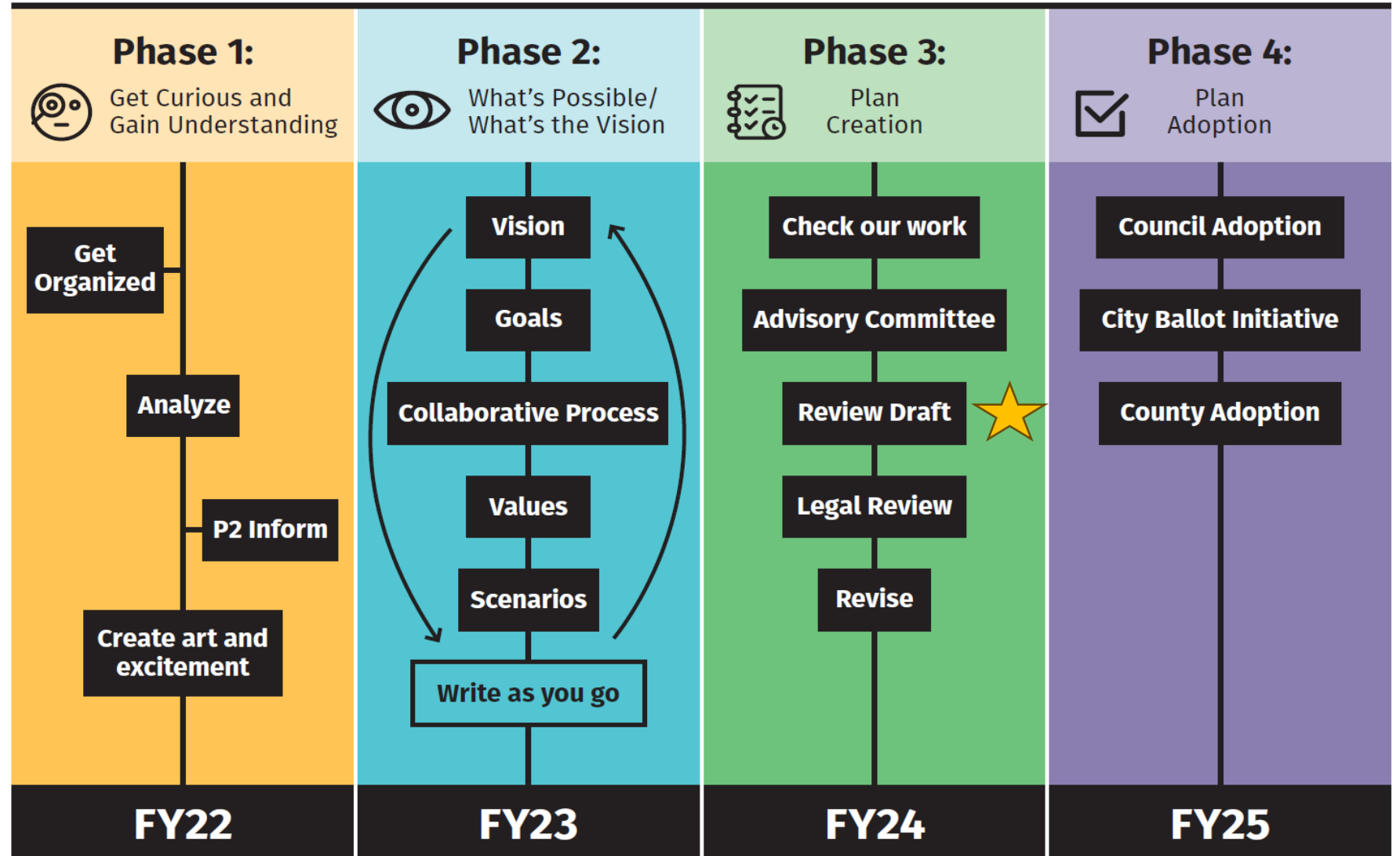


Levels of Public Participation

Plan Development & County Adoption:
Collaborate

City Adoption:
Empower

Regional Plan 2045 Update Process



Regional Plan Committee



- Endorses the plan on Mon, Sept 30
- Selected by the City and County Manager based on recommendations from elected officials.
- Held 15 meetings over 9 months.
- Meetings were open to the public including formal boards, commissions and Council.
- Reviewed Chapter by Chapter and then the whole document





60-day public review

October

Oct 20

60-day Review Starts

Oct. 21

Opening Webinar

Staff – Collecting case studies

November

Nov 13, 14, 16 & 18
Community Workshops

Staff – Testing case studies

December

Dec 4 Closing Webinar

Staff – Create case study report and suggested edits

Review Period Ends Dec 19
at 5pm

Office Hours on Fridays from 11am to 2pm (except 11/29)

Board, Commission and Council discussions at their regular meetings

Plan comments hosted on Konveio

An easy to use,
interactive document
comment platform.



Public Engagement for Coconino County

[← Back to Digital Open House](#)

Doney Park Timberline Fernwood Area Plan Open House Draft April 2022

This link contains the entire 105 page draft of the DPTF area plan. There are 12 chapters, including the introduction, vision statement, and glossary. Please note that this is a draft and therefore additional information and document editing will occur after the open house.

View Edit Pins Comments Report Embed

Page 1 of 105

Type to search

Comment Add Pins Drag

Click anywhere in the document to add a comment. Select a bubble to view comments.

Area Plan Update 2040 Open House Draft

The cover of the "Doney Park Timberline Fernwood Area Plan" document. It features a scenic landscape with mountains, a river, and a small town. The Coconino County logo is at the top, and the title "DONEY PARK TIMBERLINE FERNWOOD AREA PLAN" is centered in a white box. The background shows a person hiking in a forest.



Focus of the Plan – 5 Priorities

- Create more housing attainability in all the Region's neighborhoods and centers to mitigate displacement and reduce housing costs.
- Create mixed-use, denser neighborhoods that support a variety of housing types, and active transportation.
- Reduce community-generated climate pollution and protect air quality.
- Protect the Region's significant natural and cultural resources.
- Expand the Region's preparedness and resilience to hazards and climate change.



Regional Plan Chapters

1. Introduction
2. How the Plan Works

Policy Section

3. Goals and Policies (all topics)
4. Growth and Land Use Framework

Implementation Section

5. Social and Economic Systems
6. Transportation
7. Resource Stewardship and Resilience
8. Parks, Recreation and Open Space
9. Water Resource Management
10. Energy
11. Infrastructure and Public Safety



Policy Section

- Goals - desired results or future conditions that the community envisions and commits to achieve.
- Policies - courses of action to achieve the stated goals that guide decision making. Policies may be text or maps identified in the Plan.
- Land Use Categories – each parcel on the Future Growth Illustration is given a land use category. Each category has guidelines on what is appropriate in that area.



Implementation Section

- Implementation Guidelines - are assumptions, corresponding policies, or principles that guide how the goals and policies are interpreted and applied.
- Action Items - strategies, projects, procedures, actions, or programs that implement the goals and policies.



Maps



- Policy section
 - Policy Maps – Maps that define the geographic application of or set a policy such as future trail locations or future land uses.
- Implementation section
 - Information Maps – Maps that provide context and information to help understand goals, policies and the implementation section. These maps do not set policy and can be updated administratively.

R5E

R6E

R7E

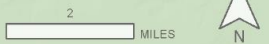
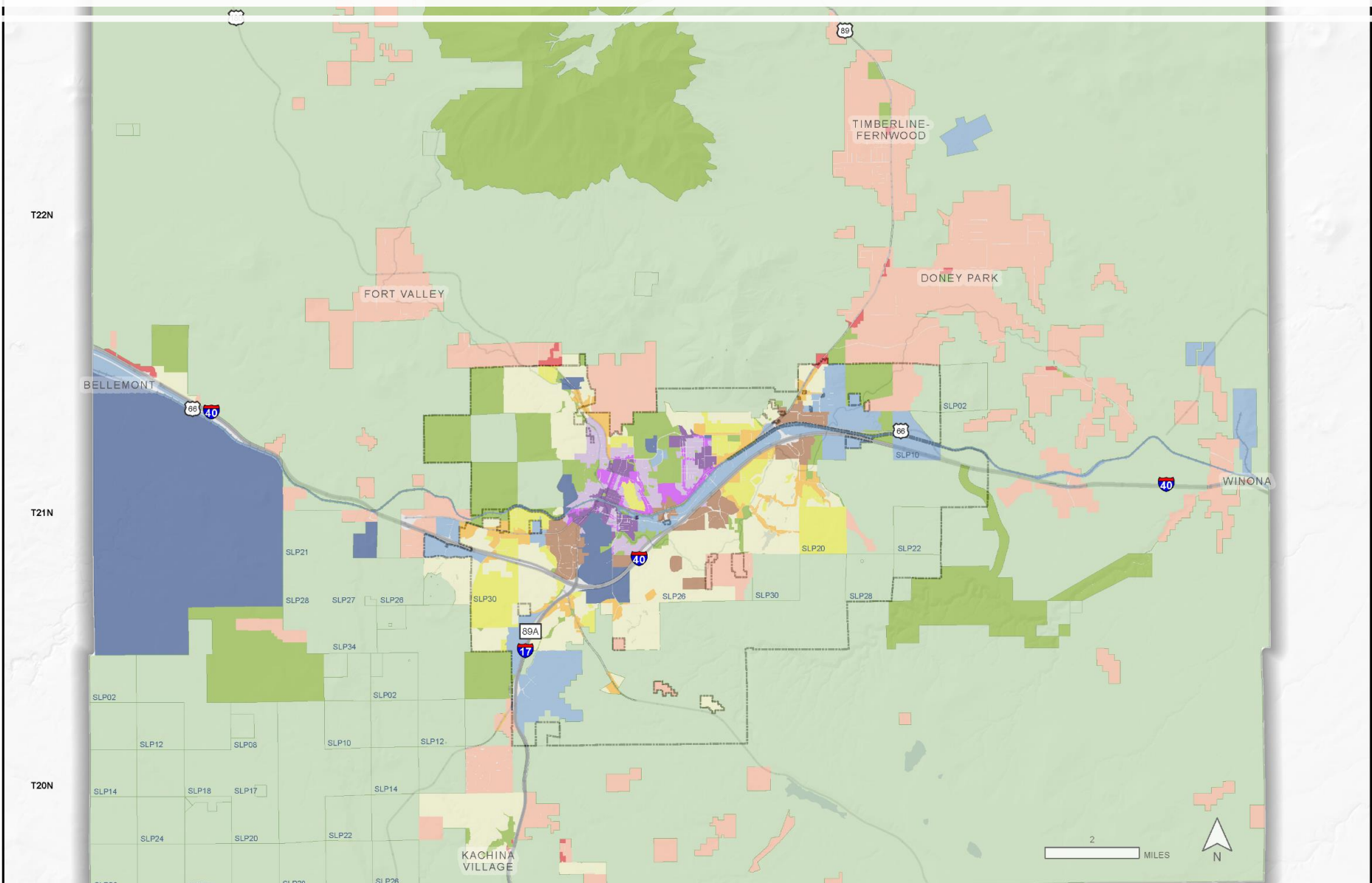
R8E

R9E

Future Growth Illustration

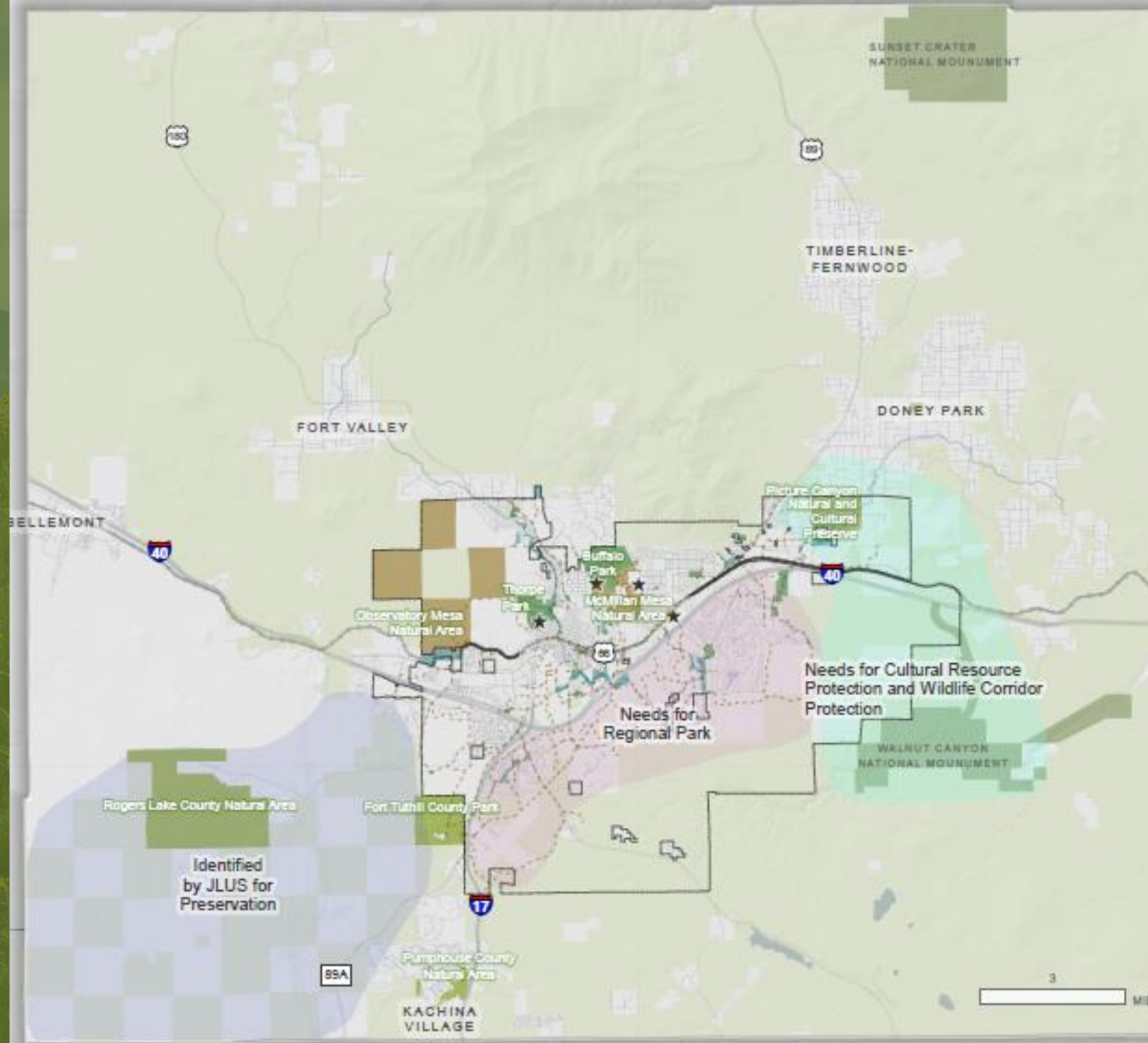
FUTURE GROWTH ILLUSTRATION

- Urban Center
- Suburban Center
- Rural Center
- Urban Corridor
- Suburban Corridor
- Employment District
- University/Research District
- Parks/Open Space
- Federal Lands and Working Landscapes
- Urban Neighborhood
- Suburban Neighborhood – High Density
- Suburban Neighborhood – Medium Density
- Rural Neighborhood
- CoF Boundary



Future Regional Parks and Open Space Needs

Neighborhood and urban park needs have criteria. Locations can be identified in the PROSE Master Plan.





Parks, Recreation and Open Space

- Goal PROS – The regional system of parks, open spaces, and community centers that supports the Region’s public and environmental health provides diverse recreational needs, is accessible to residents and visitors, and is interconnected by trails and greenways between Flagstaff, regional open space, and other County communities.
- Policy PROS.1: Incorporate and highlight the Region’s defining landscapes and vistas through landscape design in trails, parks, and open spaces.
- Policy PROS.2: Focus the purchase and management of regional preserves and connector open spaces on protecting cultural or significant natural resources, while allowing for concentrated development in areas that support housing supply and climate action.
- Policy PROS.3: Provide urban parks and complementary open spaces that support livable and sustainable compact development.



Parks, Recreation and Open Space

- Policy PROS.4: As greenfield sites are developed, ensure that new parks and open spaces have a balance of amenities, a flow with the natural and historical surroundings, are publicly accessible, and provide complementary amenities to existing public parks in the Region.
- Policy PROS.5: Plan and design regional parks that support larger public events sustainably and support diverse recreational opportunities within the same park.
- Policy PROS.6: Create and maintain opportunities for access to recreation and community centers through adaptive reuse of appropriate buildings, partnerships with non-profit organizations and neighborhoods, and new construction identified in master plans.



Implementation Guidelines

Topics

- Orientation of features and viewshed protection
- Coordination for conservation and preservation
- Public access, parking, events and trail hubs
- What kind of parks and open space we want to acquire
- Creating new parks and open spaces
- Use of existing master plans
- Increasing energy efficiency and adaptability of buildings
- Community Centers

High Priority Action Items

Item

Leverage available funding to negotiate for the purchase of greenfield lands for parks, open space, and trails in the JW Powell Boulevard extension area.

Consider pursuing a County and/or City bond or finance mechanism to fund park, recreation, and open space initiatives, operations, and maintenance.

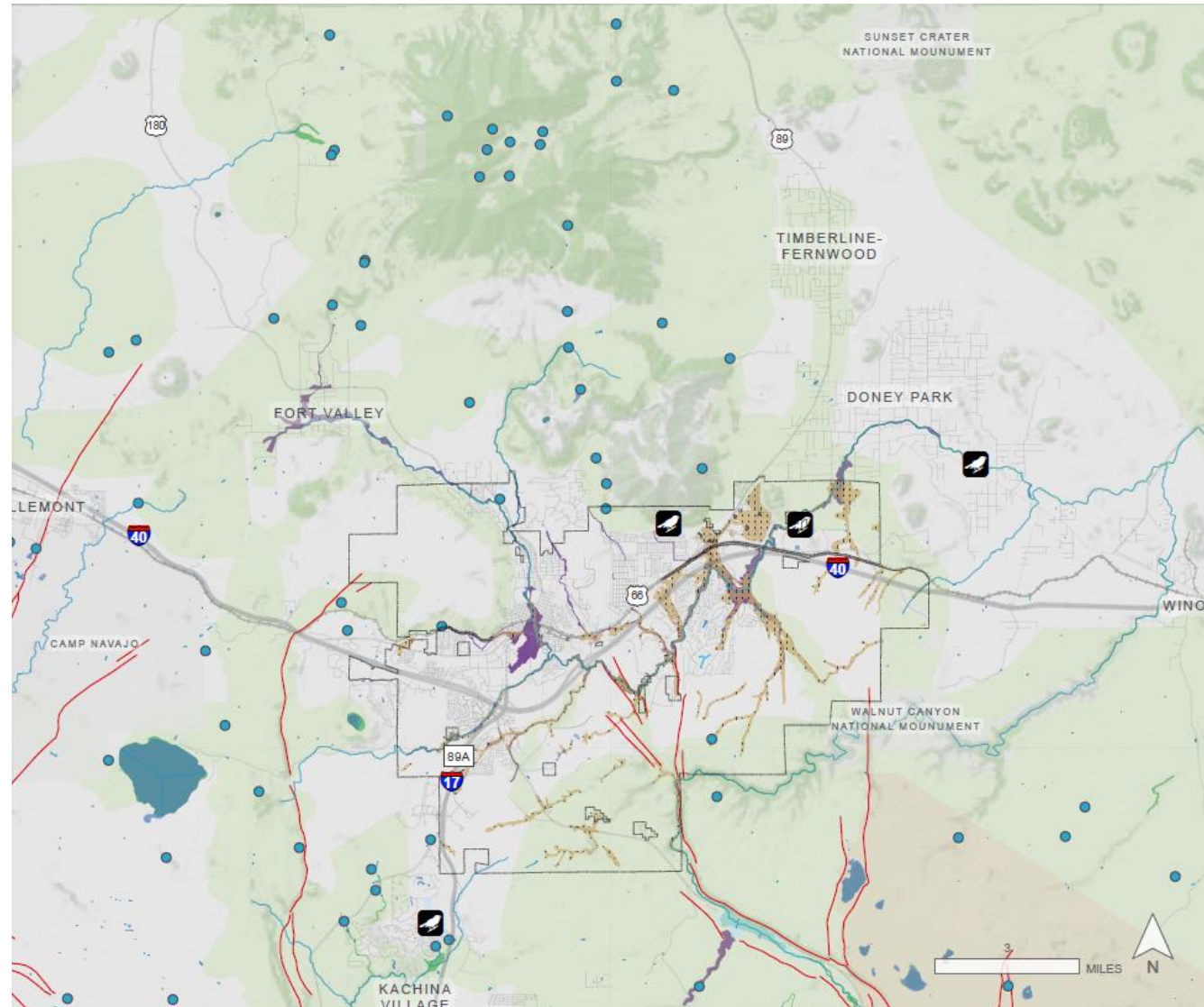
Engage with the ASLD to create opportunities for future development and open space preservation, with a particular emphasis on the [JLUS](#) findings.



Integration in Other Chapters



Policy RS.8: Incorporate the protection, conservation, and restoration of significant natural resources (see Information Maps 7-2 and 7-3) in the development of regulations and property acquisition, particularly for sensitive and uncommon habitats, and landscapes that support the health and resilience of regional wildlife and plant populations, ecosystems, or Carbon Dioxide Removal (CDR).



Ways to Participate

City of Flagstaff Contact

Sara Dechter, (928) 213-2631
sdechter@flagstaffaz.gov

Coconino County Contact

Melissa Shaw, (928) 679-8868
mshaw@coconino.az.gov

- Review the plan and send in comments
- Participate in collaborative review on Konveio
- Attend a Workshop or office hours
- Board or Commissions can form subcommittees and submit comments
- Individual member can also submit comments.





What Happens after the 60 day review?

1. Analyze and incorporate public comments and staff testing outcomes
2. Bring back complex issues to the Committee
3. Complete a final legal review
4. Send the document to the Board of Supervisors, City Council and Planning and Zoning Commissioners for a retreat in March
5. Conduct City public hearings
6. Ballot initiative
7. Conduct County public hearings



Questions

