

REVISION:	DATE:

A TENANT IMPROVEMENT FOR
SINGLE SPEED COFFEE ROASTERS
 FLAGSTAFF, ARIZONA

smith ARCHITECTS inc.
 ARCHITECTURE | PLANNING | COLLABORATION
 1503 S. YALE STREET, SUITE 200
 FLAGSTAFF, ARIZONA 86001
 PH: 928-779-5993
 www.smith-arc.com

THIS DOCUMENT, THE IDEAS AND DESIGNS HEREIN AS AN INSTRUMENT OF SERVICE, IS THE PROPERTY OF SMITH ARCHITECTS, AND IS NOT TO BE USED IN WHOLE OR PART WITHOUT WRITTEN AUTHORIZATION OF SMITH ARCHITECTS.

PRELIMINARY
 NOT FOR CONSTRUCTION OR RECORDING

DRAWN BY:	REVIEW BY:
K.CHILDERS	R.SMITH
PROJECT NO.:	
2023-04	
DATE:	
OCTOBER 24, 2023	
SHEET:	

A2.1
 EXTERIOR ELEVATION & PHOTOS



EXIST. LANDSCAPING AT STREET FRONTAGE, TYP.

1
 A2.1
 PHOTO OF EXISTING BUILDING - SOUTH FACING WITH IMPROVEMENTS (UNDER CONSTRUCTION)

AWNING IMPROVEMENT (UNDER CONSTRUCTION)



NO SIGNAGE AS SHOWN HERE



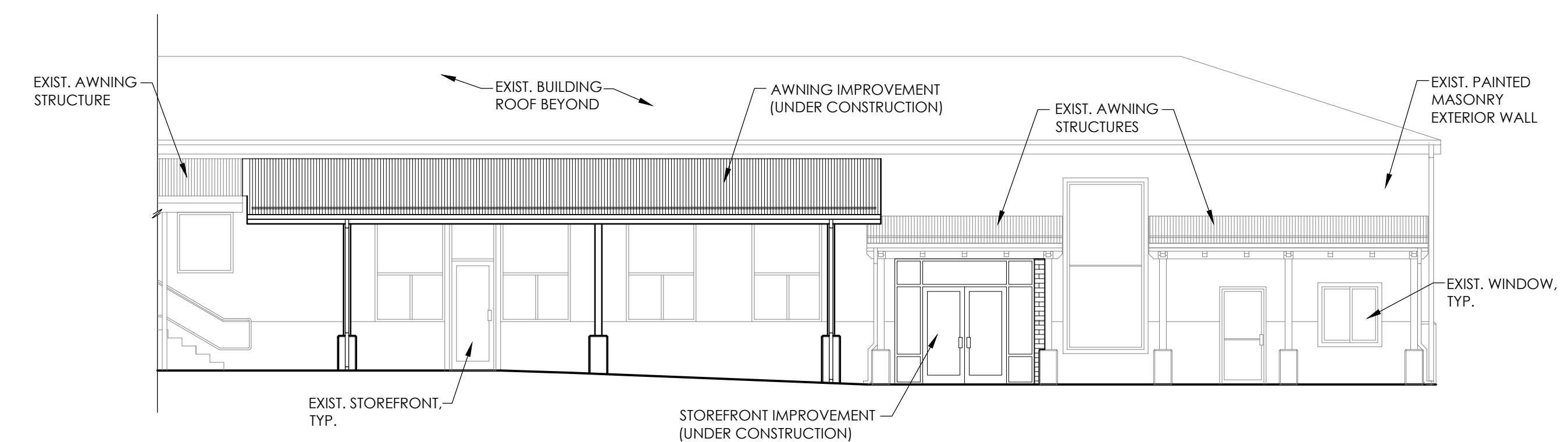
7
 A2.1
 EXAMPLE PHOTOS OF NEW LANDSCAPE BOXES AS PROPOSED ON SITE PLAN - SEE SHEET AS1.1



3
 A2.1
 PHOTO OF EXISTING BUILDING - WEST FACING



2
 A2.1
 PHOTO OF EXISTING BUILDING - EAST FACING



4
 A2.1
 PARTIAL EXTERIOR ELEVATION OF IMPROVEMENTS TO EXIST. BUILDING (UNDER CONSTRUCTION)
 SCALE: 1/8"=1'-0"



6
 A2.1
 PHOTO OF BUILDING IMPROVEMENTS (UNDER CONSTRUCTION)

AWNING IMPROVEMENT (UNDER CONSTRUCTION)

EXIST. LANDSCAPING AT STREET FRONTAGE, TYP.



5
 A2.1
 PHOTO OF BUILDING IMPROVEMENTS (UNDER CONSTRUCTION)

LOCATION OF NEW STOREFRONT (UNDER CONSTRUCTION)

AWNING IMPROVEMENT (UNDER CONSTRUCTION)