



The Ranch Mine LLC  
 4340 E Indian School Rd.  
 Suite 21552  
 Phoenix, AZ 85018

480.399.5990  
 info@theranchmine.com  
 www.theranchmine.com

**Pine Canyon 344**  
 2911 S Solitaires Canyon Dr.  
 Flagstaff, AZ 86005



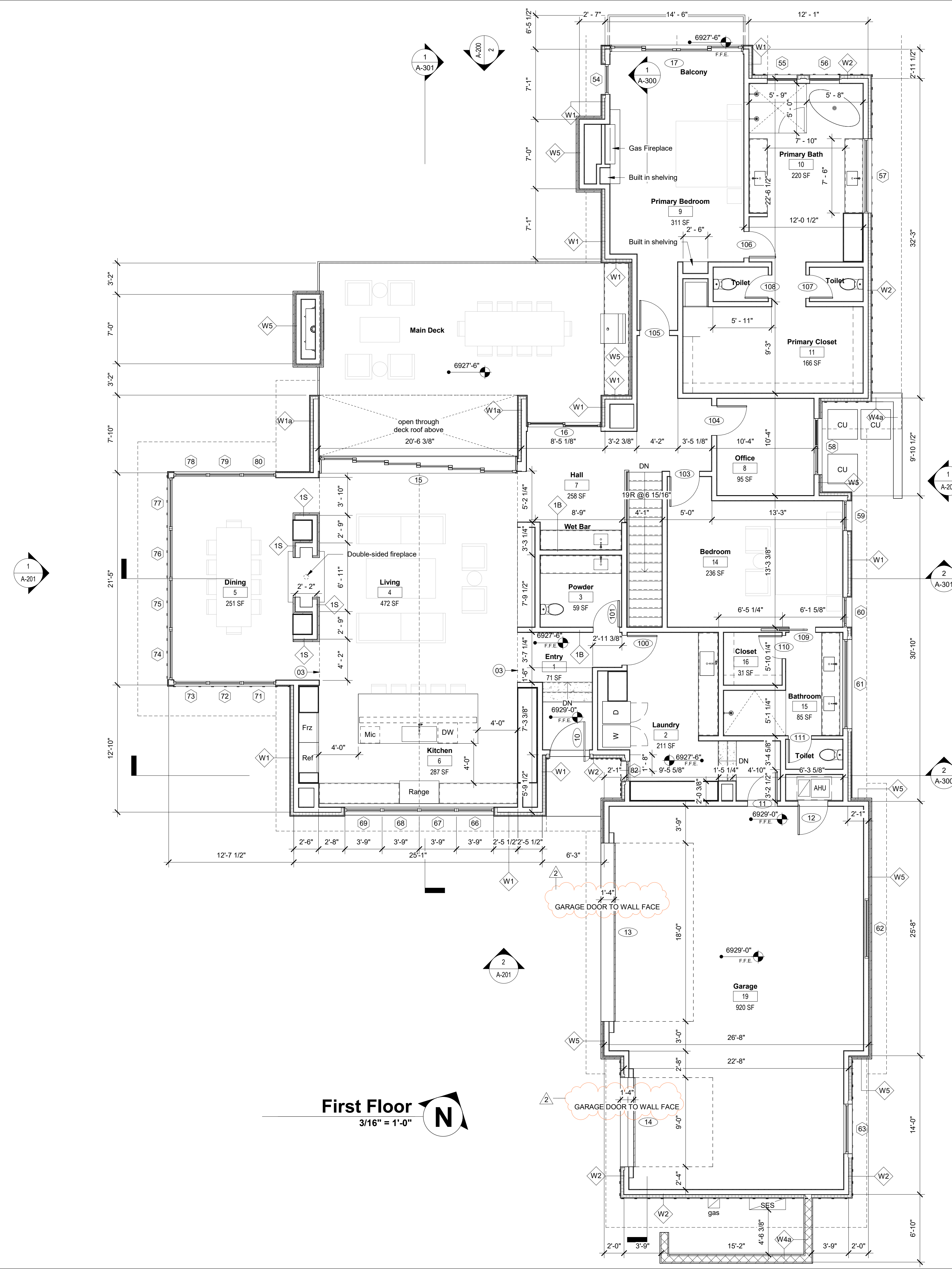
phase:  
 Construction Documents

date of issue:  
 01.10.2024

rev no, date, description:  
 2 01/10/24 Final DRC

sheet contents:  
 floor plan - first

sheet no:  
**A-100**



**Floor Plan Notes**

- See A-500 for wall type details
- Provide blocking for all wall mounted TV, typ.

**Keynotes**

- 01 Column per structural
- 02 Planter
- 03 Soffit above

**Wall Types**

SEE DETAILS ON A-500

- W1 Wood Tongue & Groove
  - W1a Clad on both sides
- W2 Wood Board & Batten
- W3 Wood Board & Batten on CMU
- W4 Stone Veneer CMU
  - W4a Clad on both sides
- W5 Stone Veneer
  - W5a Clad on both sides
- 1x Interior partition
- 2x Interior furring
- 1S Interior Stone Veneer

Natural Light % Per Area				
No.	Name	Area	Ceiling Height	Glazing % of Floor Area
4	Living	472 SF	14'-0"	40.26%
5	Dining	251 SF	11'-0"	119.59%
6	Kitchen	287 SF	14'-0"	52.20%
8	Office	95 SF	11'-0"	26.19%
9	Primary Bedroom	311 SF	11'-0"	41.79%
14	Bedroom	236 SF	11'-0"	12.71%
22	Den	266 SF	9'-0"	33.87%
23	Bedroom	238 SF	9'-0"	35.28%
26	Bedroom	194 SF	9'-0"	51.45%
31	Bedroom	300 SF	9'-0"	14.02%

**First Floor**  
 3/16" = 1'-0"



The Ranch Mine LLC  
 4340 E Indian School Rd.  
 Suite 21552  
 Phoenix, AZ 85018

480.399.5990  
 info@theranchmine.com  
 www.theranchmine.com

**Pine Canyon 344**  
 2911 S Solitaires Canyon Dr.  
 Flagstaff, AZ 86005



EXPIRES DEC 31 2024

**Floor Plan Notes**

- See A-500 for wall type details
- Provide blocking for all wall mounted TV, typ.

**Keynotes**

- 01 Column per structural
- 02 Planter
- 03 Soffit above

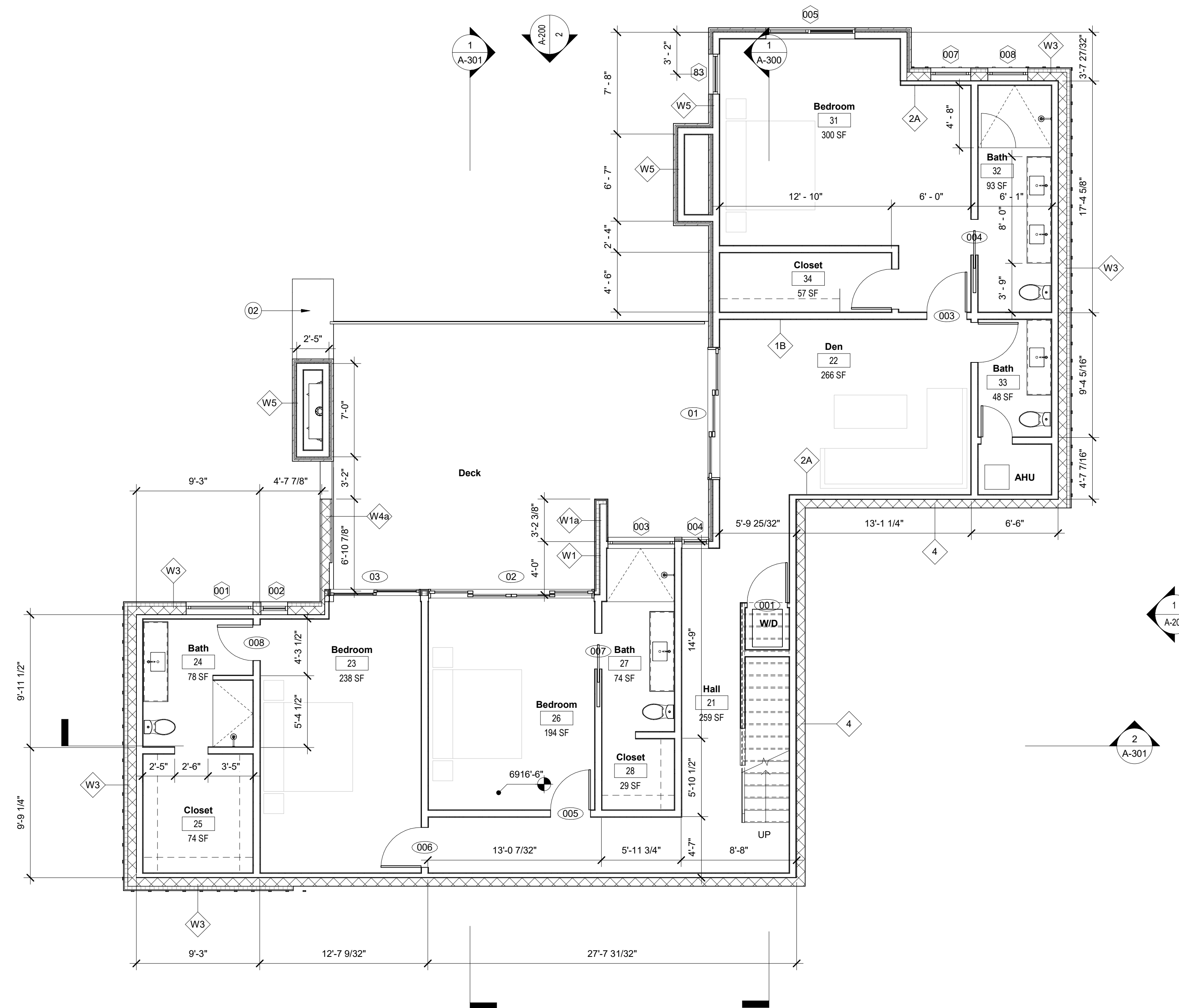
**Wall Types**

SEE DETAILS ON A-500

- W1 Wood Tongue & Groove
  - W1a Clad on both sides
- W2 Wood Board & Batten
- W3 Wood Board & Batten on CMU
- W4 Stone Veneer CMU
  - W4a Clad on both sides
- W5 Stone Veneer
  - W5a Clad on both sides
- 1x Interior partition
- 2x Interior furring
- 1S Interior Stone Veneer

**Natural Light % Per Area**

No.	Name	Area	Ceiling Height	Glazing % of Floor Area
4	Living	472 SF	14'-0"	40.26%
5	Dining	251 SF	11'-0"	119.59%
6	Kitchen	287 SF	14'-0"	52.20%
8	Office	95 SF	11'-0"	26.19%
9	Primary Bedroom	311 SF	11'-0"	41.79%
14	Bedroom	236 SF	11'-0"	12.71%
22	Den	266 SF	9'-0"	33.87%
23	Bedroom	238 SF	9'-0"	35.28%
26	Bedroom	194 SF	9'-0"	51.45%
31	Bedroom	300 SF	9'-0"	14.02%



**Basement Plan**  
 3/16" = 1'-0"

phase:  
 Construction Documents

date of issue:  
 01.10.2024

rev no, date, description:

sheet contents:  
**floor plan - basement**

sheet no:  
**A-101**