

General Notes

All newly planted ground covers, shrubs, and trees will receive drip irrigation from an automatic drip irrigation system with backflow prevention and rain sensor. No hydrozones, turf areas, or other oasis areas are proposed.

GRADING

The grades and contours shown are to the finish grade of the project. The finish grade is to the top of the final landscaping. For all mulch and soil amendments to be installed, the contractor is required to verify that the top of the ground cover matches grades on the plans.

CoF 13-06-007-0004 LANDSCAPING NOTES

Adjacent site improvements, pavement construction, irrigation installation and finish grading shall be completed prior to planting work. Do not plant when conditions are not suitable for digging, mixing, raking and/or grading. Planting needs to occur during the months that irrigation systems are in operation. Therefore, planting may occur between April 1 and September 30.

Tree and Shrub Installation

- Soil excavated from the planting pit shall be typically considered acceptable as backfill material for planting.
- All containers shall be removed prior to plant installation in a manner that does not disturb the potted soil or root ball.
- Set the root ball on six (6) inches of firm planting soil, plumb and in the center of the pit with the root ball crown slightly above the same elevation as adjacent finished landscape grades. Remove any wire, twine, burlap, or other material from the upper one third of the root ball of balled and burlapped stock. Wire baskets and synthetic burlap shall be completely removed after the root ball has been placed in its final location.
- Once plant is set, place backfill material around base and sides of root ball and work each layer to settle backfill and eliminate voids. When backfilling is 2/3 complete, water thoroughly. Place the remainder of the backfill and repeat watering until no more is absorbed. Place the final layer of backfill and water.
- All deciduous trees shall be wrapped from the ground line up to and including the first primary crotch formed by the first major branch. Wrapping shall be done after the plant has been installed.
- Two to three inches of specified mulch shall be placed in the area disturbed by excavation of the planting well.

Groundcover Installation

Prior to planting activities, completely remove existing weeds, including roots. Immediately prior to installation, cultivate groundcover areas to a depth of six (6) inches and grade smoothly and uniformly. Plant groundcover so the root crown is at or slightly above the bed's finish grade. After planting of groundcover and prior to mulching, spread pre-emergent weed control over planting bed soil surface per manufacturer's written directions. Install the specified mulch to a depth of two (2) inches over the entire groundcover bed.

Landscape Completion

- Prune dead or damaged branches, making all cuts at branch collar. Maintain the natural habit, shape and specified size. Remove all tags, labels, and other material.

Zoning Code Landscape Requirements

AREA	QUANTITY	TREES REQUIRED	SHRUBS REQ'D	GROUNDCOVER REQ'D
Street Buffer (Route 66)	534 LF	1 per 15 LF = 36 Trees, 30 Trees Provided, 6 Tree Credits (3) 10'-18" = 6 trees	3 per Tree Provided = 90 Shrubs, 90 Shrubs Provided	2 per Tree Provided = 60 GCs, 60 GCs Provided
Parking Area	84 uncovered spaces	2 per 8 Spaces = 21 Trees, 6 Trees Provided, 15 Tree Credits (3) 10'-18" = 6 trees (3) ≥ 18" = 9 trees	2 per Tree = 12 Shrubs, 12 Shrubs Provided	2 per Tree = 12 GCs, 12 GCs Provided
Building Foundation	700 LF	1 per 25 LF = 28 Trees, 26 Trees Provided, 2 Tree Credits (1) 10'-18" = 2 trees	2 per Tree Provided = 52 Shrubs, 52 Shrubs Provided	2 per Tree Provided = 52 GCs, 52 GC Provided
Plant Totals Provided On-site		62 Trees	156 Shrubs	124 GCs
ROW Area	394 LF	1 per 45 LF = 9 Trees; see callout on plan; Mountain Mahogany used as tree specimen	Match surrounds or per median; up to 25% coverage	Match surrounds or per median; up to 25% coverage

Landscape Materials, Quantities and Remarks

QTY	SYMBOL	DESCRIPTION
11,572 SF		1" tan or brown gravel, minimum 3" layer
9,650 SF		Hydroseed Right-of-Way disturbed areas with City of Flagstaff native seed mix
41,697 SF		Hydroseed all disturbed areas on-site with City of Flagstaff native seed mix (recommended with 3-5 years selective weeding maintenance for optimum establishment) or topdress with gravel (2" depth minimum) or locally-sourced wood chips (3" depth minimum)
198 SF		Locally-sourced wood chip mulch
233 LF		6" rip rap/rock border around selected gravel/mulch beds as shown on plan
		Existing trees and vegetation
~106 not including tree wells		Malapais boulders, 30 inches - 36 inches *** Per level III security requirements all boulders around the building must provide a minimum vehicle barrier height of 30" above finish grade and a maximum clear space between boulders of 4'
		Existing trees counted for Street Frontage credit with DBH identified
		Existing trees counted for Building Foundation credit with DBH identified
		Existing trees counted for Parking Area credit with DBH identified

Plant List

QTY	SYMBOL AND NAME	SPECS	SIZE (HxW), NOTES
TREES			
10	<i>Fraxinus velutina</i> / Arizona Ash	15 gallons	40' x 25', Native
3	<i>Pinus ponderosa</i> / Ponderosa Pine	15 gallons	40' x 20', Native
16	<i>Prunus virginiana</i> / Chokecherry	15 gallons	20' x 15', Native
3	<i>Pseudotsuga menziesii</i> / Rocky Mtn. Douglas Fir	15 gallons	50' x 20', Native
24	<i>Quercus gambelli</i> / Gambel Oak	15 gallons	20' x 15', Native
6	<i>Robinia neomexicana</i> / NM locust	15 gallons	15' x 15', Native
SHRUBS / ACCENTS			
9	<i>Agave parryi</i> / Parry's Agave	5 gallons	2' x 2', Native
7	<i>Amelanchier utahensis</i> / Utah serviceberry	5 gallons	10' x 10', Native
27	<i>Artemisia frigida</i> / Fringed sage	1 gallon	1' x 1.5', Native
7	<i>Artemisia tridentata</i> / Great basin sage	5 gallons	6' x 6', Native
36	<i>Chamaebatiaria millefolium</i> / Fernbush	5 gallons	4' x 4', Native
37	<i>Chrysothamnus nauseosus</i> / Rubber Rabbitbrush	5 gallons	4' x 4', Native
21	<i>Physocarpus spp.</i> / Ninebark	5 gallons	4' x 4', Native
9	<i>Shepherdia argentea</i> / Buffaloberry	5 gallons	8' x 8', Native
3	<i>Yucca spp.</i> / Yucca <i>Yucca filamentosa</i> (Adam's Needle) preferred for planting scheme.	5 gallons	4' x 3', Native
GROUNDCOVERS / GRASSES			
14	<i>Agastache cana</i> / Hummingbird Mint	1 gallon	30" x 24", Native
30	<i>Bouteloua curtipendula</i> / Sideoats grama	1 gallon	30" x 24", Native
35	<i>Erigonium umbellatum</i> / Sulfur Buckwheat	1 gallon	8" x 24", Native
10	<i>Mahonia repens</i> / Creeping Holly	1 gallon	24" x 36", Native
35	<i>Calamagrostis acutiflora</i> / Karl Foerster Grass <i>Sorghastrum nutans</i> (Indian Grass), not listed in the City of Flagstaff plant list, is preferred for planting scheme. Same growing conditions, same mature size, drought tolerant, native to Arizona, good for bank stabilization and erosion control, and is readily available through local nursery distributors.	1 gallon	48" x 24", Naturalized
ROW PLANTS (32 total)			
1	<i>Amelanchier utahensis</i> / Utah serviceberry	5 gallons	10' x 10', Native
9	<i>Cercocarpus spp.</i> / Mountain Mahogany	5 gallons	10' x 8', Native
13	<i>Chrysothamnus nauseosus</i> / Rubber Rabbitbrush	5 gallons	4' x 4', Native
6	<i>Juniperus horizontalis</i> / Carpet Juniper	1 gallon	12" x 72", Naturalized
3	<i>Prunus besseyi</i> / Western sandcherry	3 gallons	3' x 4', Native



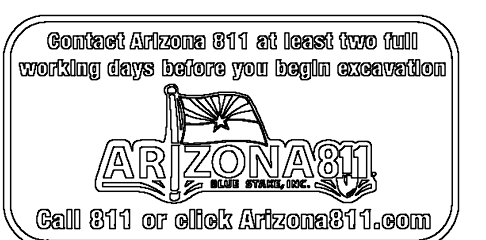
STAMP

CITY
STAMP

Copyright ©. The following drawings are instruments of service to the Landscape Architect. They are not products of design. All ideas, designs, arrangements, and plans indicated or represented by this drawing are owned by and the property of the designer, and were created, evolved, and developed for use on and in connection with the specified project. None of such ideas, designs, arrangements, or plans shall be used by or disclosed to any person, firm, or corporation for any purpose whatsoever without the written permission of the designer.

U.S. Federal Courthouse

1535 and 1609 W Route 66
Flagstaff, AZ 86001



Change | Revisions | By

Drawn by: FD
Checked by: DB
Drawing Date: 2024-09-26
Phase: 90% Construction
COF Project: PZ-23-00042-02

Landscape Plan

LA-01

STAMP

CITY
STAMP

Copyright ©. The following drawings are instruments of service to the Landscape Architect. They are not products of design. All ideas, designs, arrangements, and plans indicated or represented by this drawing are owned by and the property of the designer, and were created, evolved, and developed for use on and in connection with the specified project. None of such ideas, designs, arrangements, or plans shall be used by or disclosed to any person, firm, or corporation for any purpose whatsoever without the written permission of the designer.

U.S. Federal Courthouse

1535 and 1609 W Route 66
 Flagstaff, AZ 86001

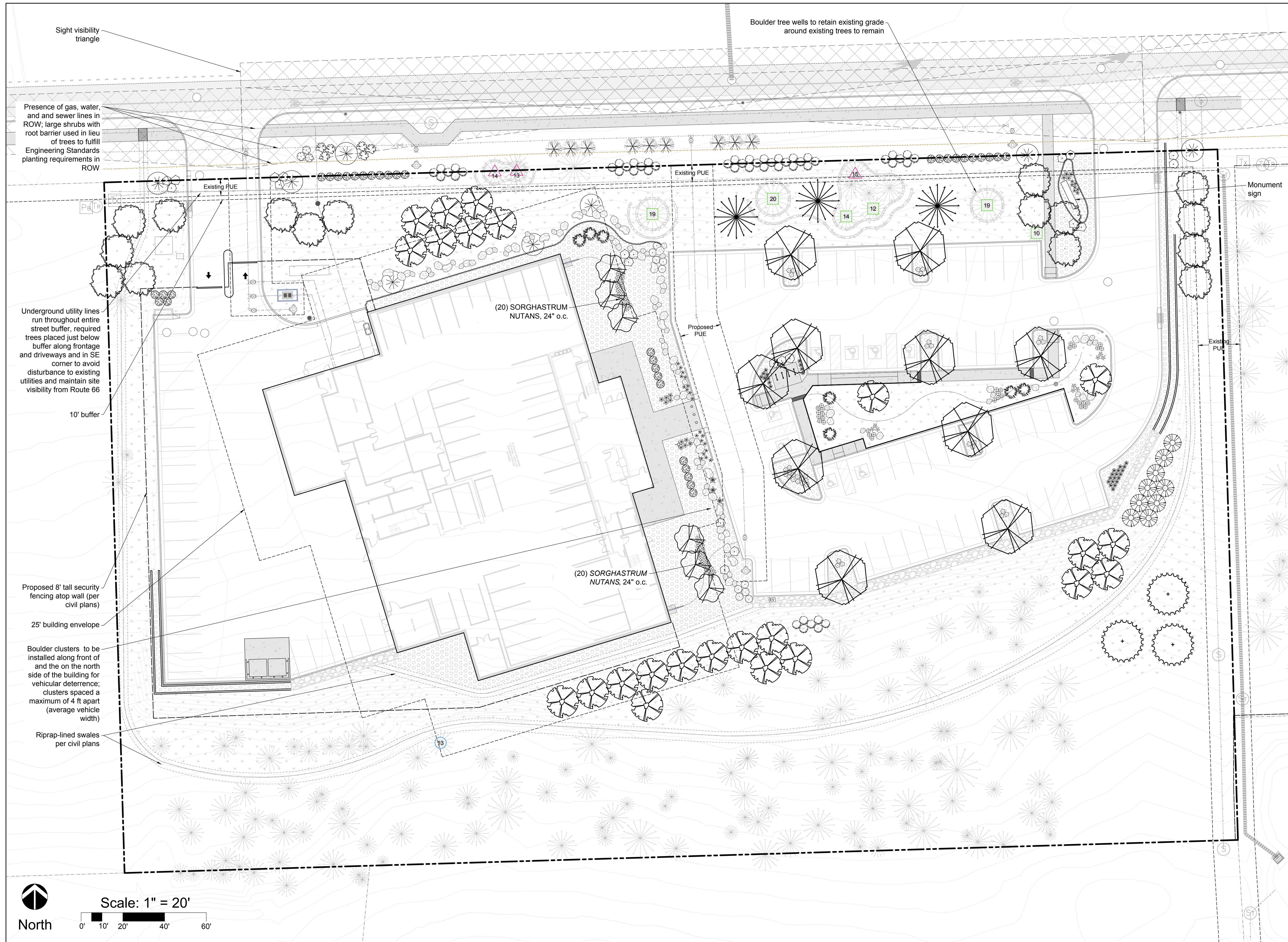


Change Revisions By

Drawn by: FD
 Checked by: DB
 Drawing Date: 2024-09-26
 Phase: 90% Construction
 COF Project: PZ-23-00042-02

Landscape Plan

LA-02



Sight visibility triangle

Presence of gas, water, and sewer lines in ROW; large shrubs with root barrier used in lieu of trees to fulfill Engineering Standards planting requirements in ROW

Underground utility lines run throughout entire street buffer, required trees placed just below buffer along frontage and driveways and in SE corner to avoid disturbance to existing utilities and maintain site visibility from Route 66

10' buffer

Proposed 8' tall security fencing atop wall (per civil plans)

25' building envelope

Boulder clusters to be installed along front of and the on the north side of the building for vehicular deterrence; clusters spaced a maximum of 4 ft apart (average vehicle width)

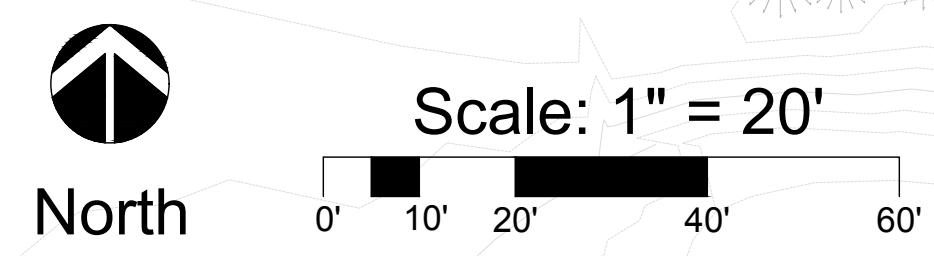
Riprap-lined swales per civil plans

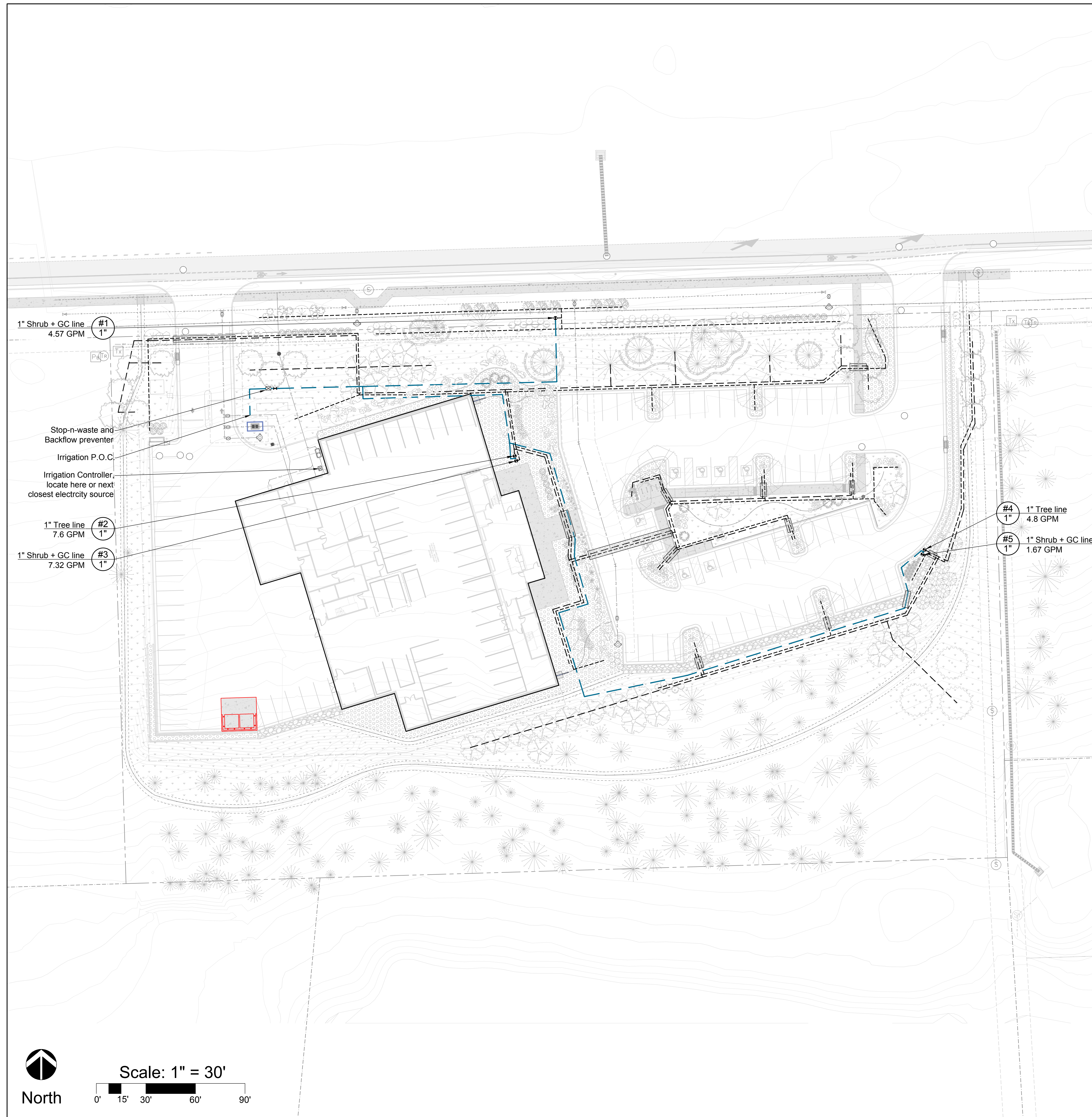
Boulder tree wells to retain existing grade around existing trees to remain

Monument sign

(20) SORGHASTRUM NUTANS, 24" o.c.

(20) SORGHASTRUM NUTANS, 24" o.c.





General Irrigation Notes

- Contractor shall review these plans thoroughly, make a detailed site visit, and shall immediately bring any inconsistency, site layout problems, or any other request for clarification to the architect for resolution prior to the delivery of any bid. Failure to do so shall cause the Contractor to be ineligible for extras relating to such matters.
- Irrigation point of connection (P.O.C.) to be a new water meter located as shown on the irrigation plans. Water meter provided by others.
- Pipe layout is diagrammatic. Install pipe beyond obstacles, avoid existing trees, and trees in landscape areas.
- Test irrigation system for pressure and leaks before back-filling.
- Coordinate irrigation work with planting plans to avoid conflicting location between piping and planting pits.
- Use common trenching whenever possible and avoid trenching under tree driplines.
- Place all valves in approved 12" or jumbo underground valve box i.e. Carson or equal. Drip control valves to be equipped with a pressure regulator and wye strainer as specified on legend.
- PVC is to be used as lateral feeders with Bowsmith drip emitters as shown and directed in emitter chart.
- Use manual end flush valves in a 6" pit box at the end of all supply lines.
- Irrigation controller to be mounted on the side of the building near the backflow and valves or as directed by owner. Irrigation control wire to be #14 direct burial with one spare wire included. Install rain sensor per manufacturer's recommendations.
- All irrigation lines under paving and through walls, footings, etc. shall be sleeved with PVC SCH 40 pipe. Sleeve shall be at minimum two (2x) times the diameter of the pipe to be sleeved. It is the responsibility of the contractor to coordinate the installation of sleeving with other trades.
- At project completion, provide as-built irrigation plan and operating and maintenance manual to project owner.

Irrigation Schedule

SYMBOL	DESCRIPTION
	Hunter ICC2 Irrigation Controller, 8-54 stations (metal) or 8-38 stations (plastic)
	Stop-N Waste for Winter Drain Down
	1" Backflow Preventer Febco 825Y or approved equal with insulated cover
	1" Sch 40 PVC Mainline - Bury 24" Deep
	Sch 40 PVC Sleeves - 2x the pipe size minimum
	1" Control Valve - Hunter ICV assembly with pressure reducer/wye strainer and brass isolation ball valve
	PVC Lateral Lines - refer to pipe sizing chart

Not shown graphically:
 · Flush End Cap Assembly at the of each PVC line
 · Tree/Shrub/Groundcover Emitters (Bowsmith ML 210/220 or Bowsmith SL 210/220)

Emitter Schedule

PLANT TYPE	EMITTERS/PLANT #	MULTI/SINGLE	# OF OUTLETS	GPH/OUTLET
Trees	1	M	6	2
Shrubs	2	S	1	2
Groundcovers	1	S	1	1

Pipe Sizing

PIPE SIZE	MAX GPM
2"	50
1-1/2"	30
1-1/4"	22
1"	12
3/4"	8
1/2"	4



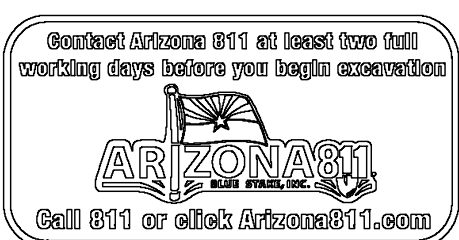
STAMP

CITY
STAMP

Copyright ©. The following drawings are instruments of service to the Landscape Architect. They are not products of design. All ideas, designs, arrangements, and plans indicated or represented by this drawing are owned by and the property of the designer, and were created, evolved, and developed for use on and in connection with the specified project. None of such ideas, designs, arrangements, or plans shall be used by or disclosed to any person, firm, or corporation for any purpose whatsoever without the written permission of the designer.

U.S. Federal Courthouse

1535 and 1609 W Route 66
Flagstaff, AZ 86001

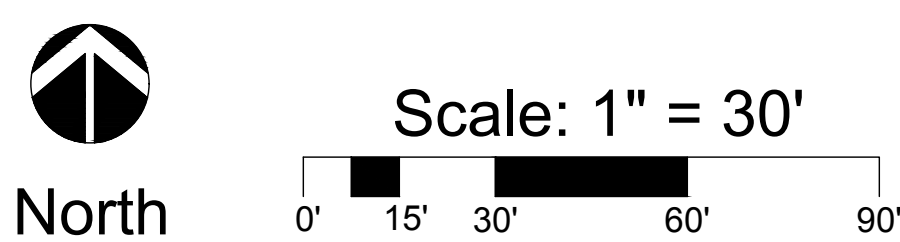


Change | Revisions | By

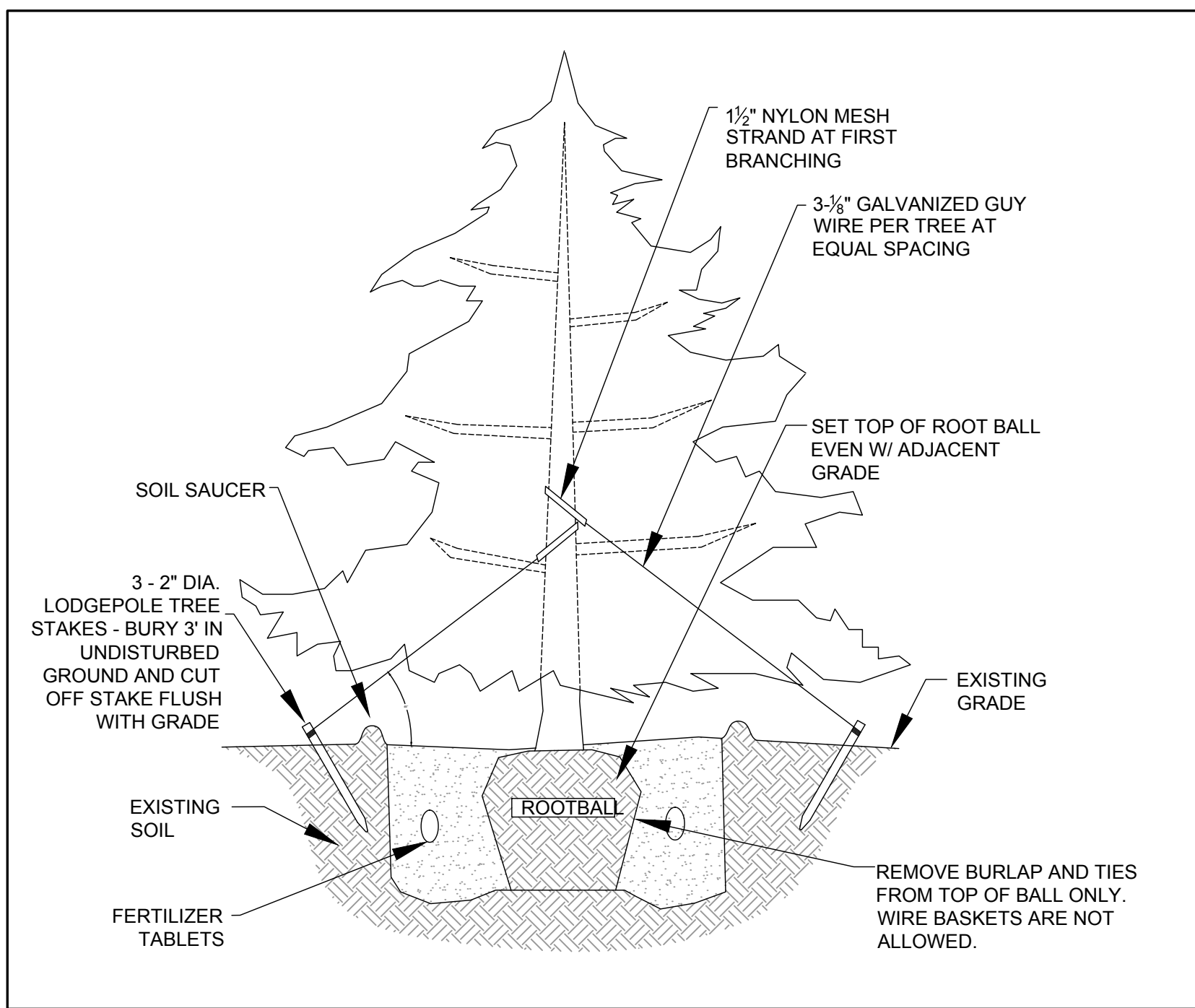
Drawn by: FD
 Checked by: DB
 Drawing Date: 2024-09-26
 Phase: 90% Construction
 COF Project: PZ-23-00042-02

Irrigation Plan

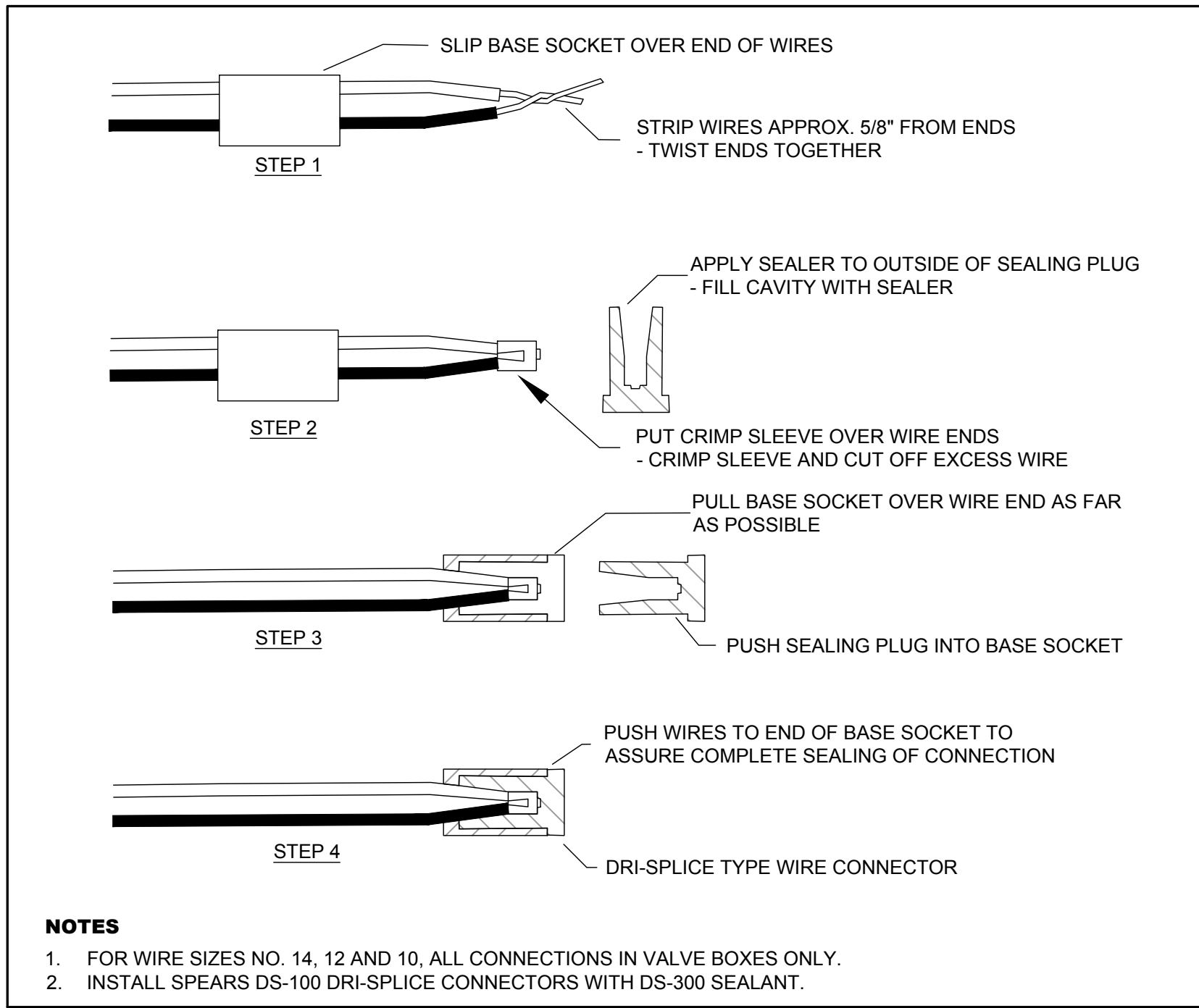
LA-03



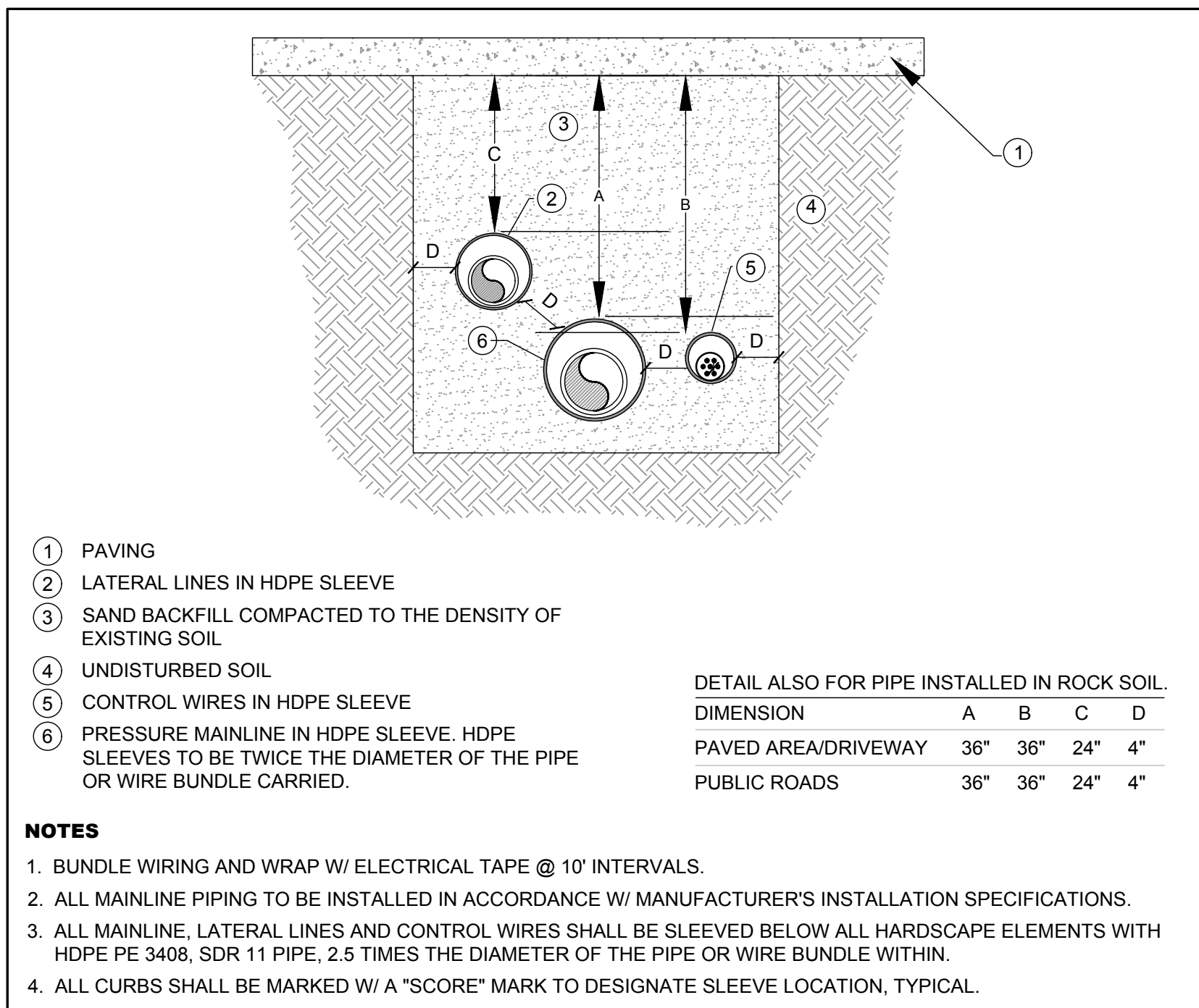
Conifer Tree Planting (N.T.S.)



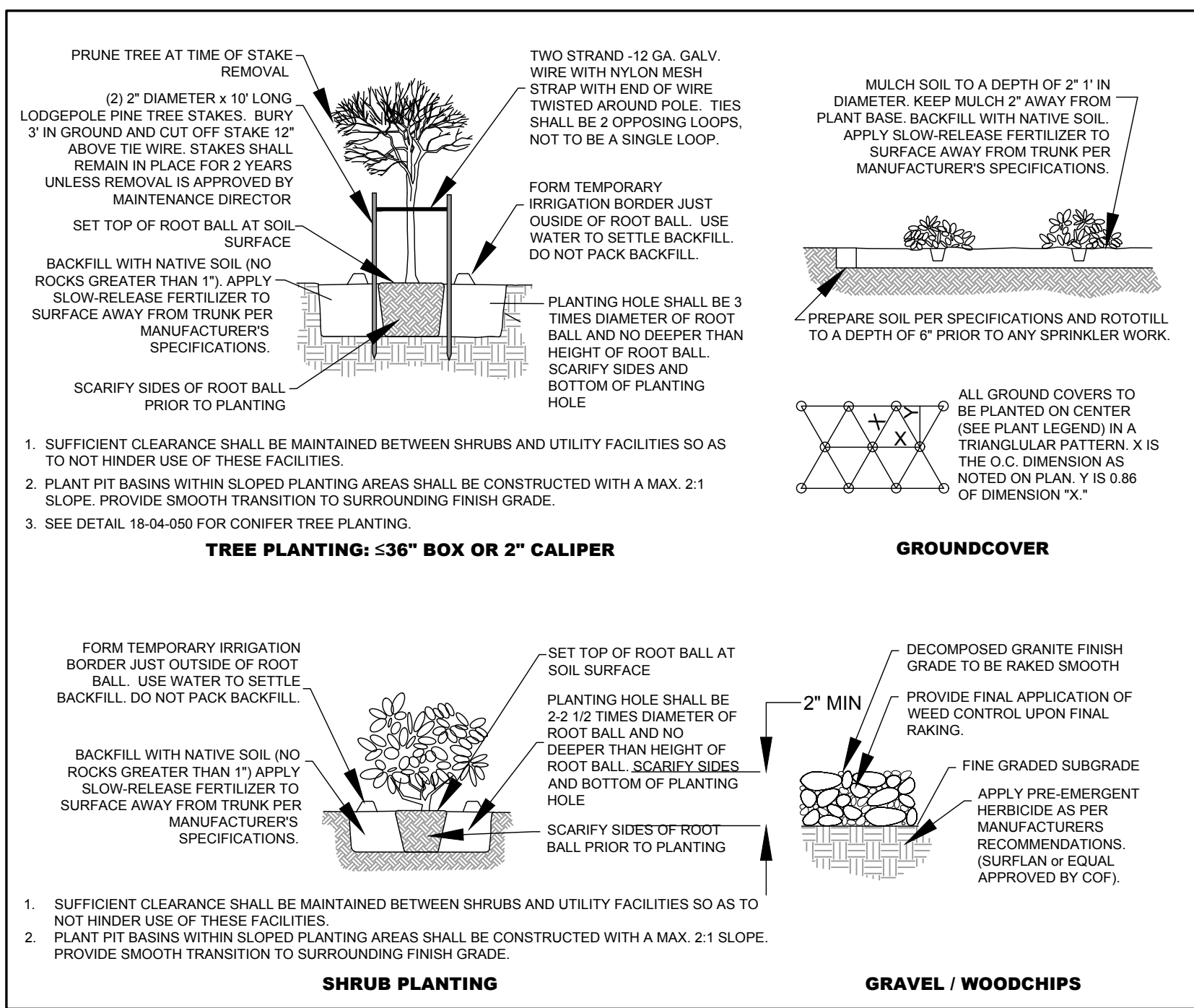
Irrigation Wire Connection (N.T.S.)



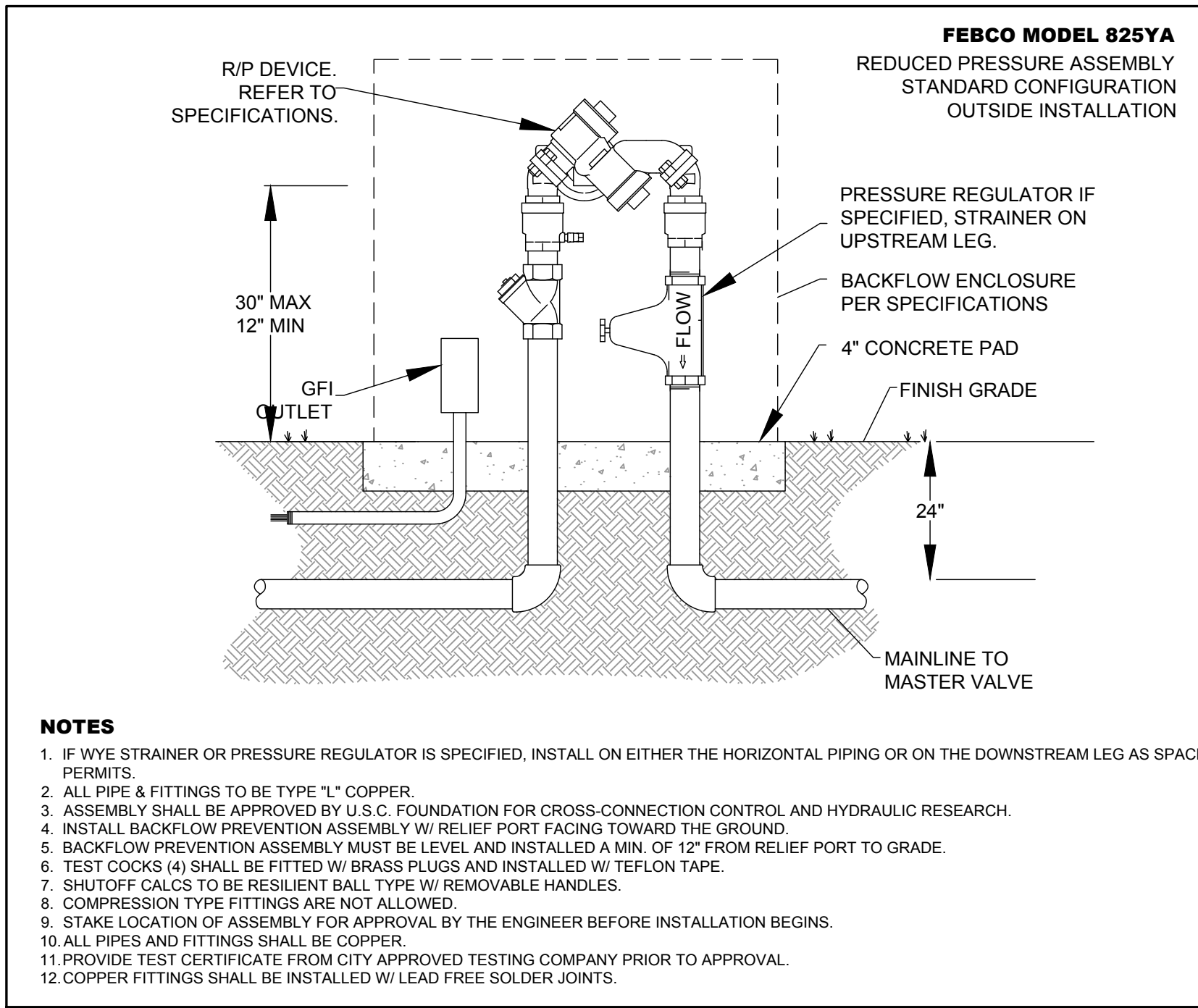
Sleeve Trenching Detail (N.T.S.)



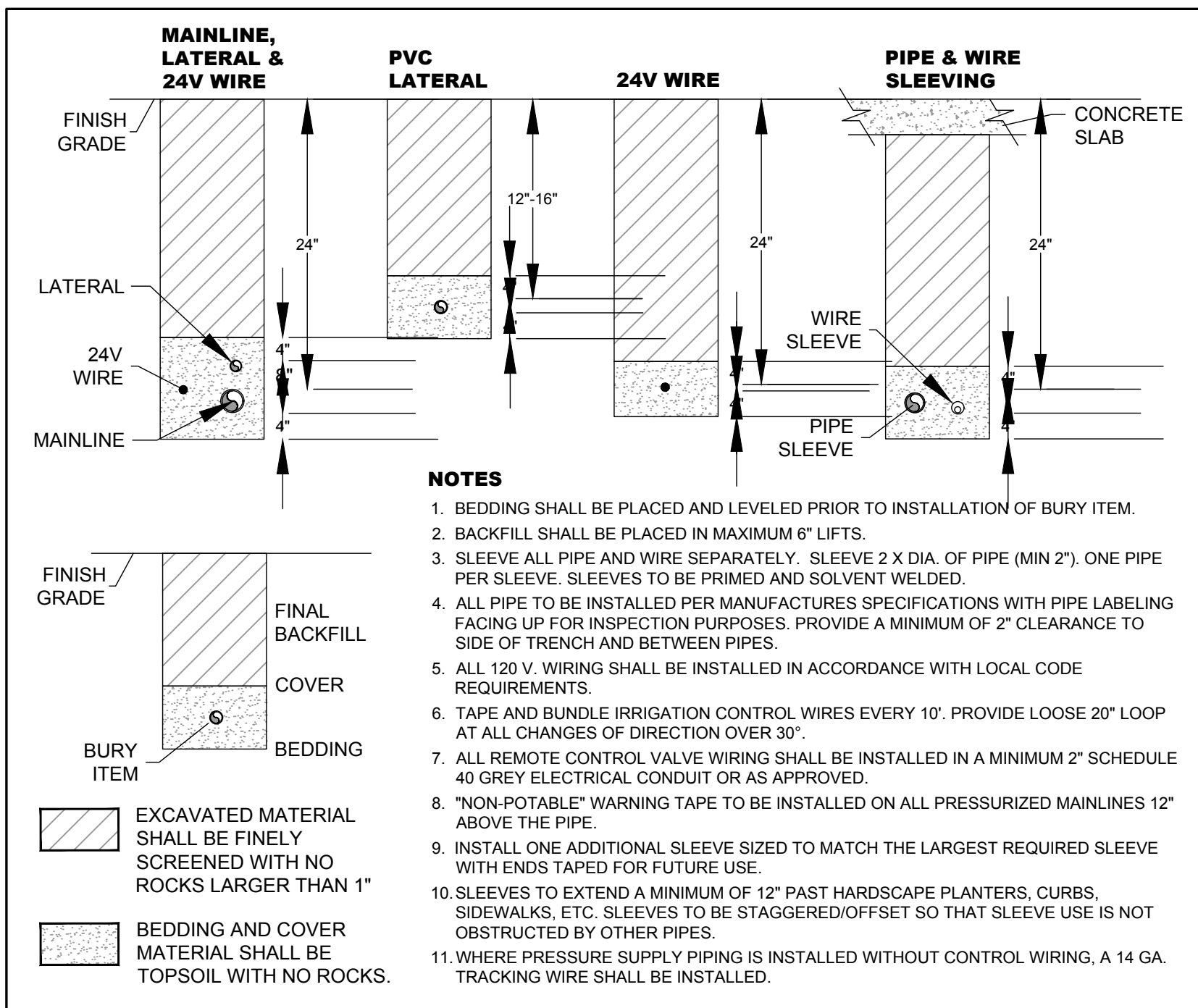
Landscape Details (N.T.S.)



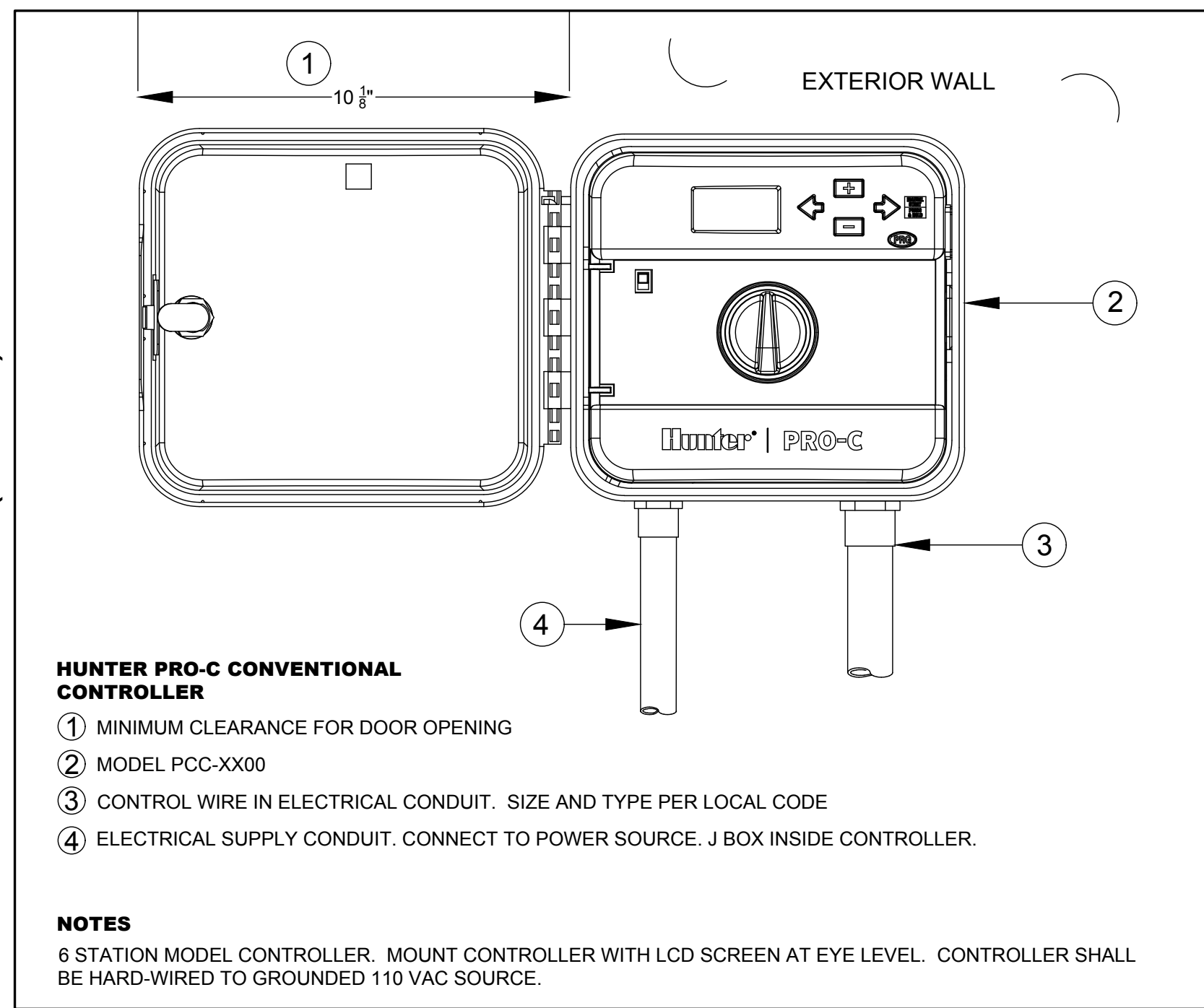
Backflow Assembly (N.T.S.)



Irrigation Trenching (N.T.S.)



Hunter Pro-C Controller (N.T.S.)



Maintenance Notes

- Maintenance Required**
- Maintenance of all landscaping shall be the responsibility of the applicant, lessee, heirs, assigns, agent, homeowners' association, or other liable entity of the property and shall consist of regular watering; pruning, mowing, fertilizing, weed removal, and the removal and replacement of dead plants, irrigation systems and landscape features. This shall include maintenance of approved landscaping in the public right-of-way.
 - Existing non-native invasive trees as determined by the Director, as well as trees that are dead, diseased, injured, in danger of falling upon existing or proposed structures, overhang or abut a building so as to create a potential fire hazard, interfere with the growth of other trees or existing utilities, or are located within sight lines at intersection streets and driveways may be cut down and removed. Such tree(s) is not required to be replaced with new trees.
 - The applicant or liable entity in control of any private premises shall at all times maintain the premises free of litter and weeds in compliance with City Code Title 6, Police Regulations, and this division.
 - Approved landscaping in rights-of-way, including street trees, shall be maintained in compliance with the Engineering Standards, Section 13-18-05, Maintenance.
 - Any plant materials included in an approved landscaping plan that do not survive after installation shall be replaced with plant material(s) of the same or like species of equal size within the next planting season but, in any event, within six months of the plant's demise. Failure to replace said plant materials within the specified time period shall be enforced in compliance with the enforcement provisions of Division 10-20.110, Enforcement.
- Use of Pesticides and Herbicides**
- General. If pesticides and herbicides are used in landscape areas, organic pest control methods are preferred over synthetic pesticide use. Pesticides shall be applied in compliance with the Arizona Department of Environmental Quality (ADEQ) "Groundwater Protection List" and the "Best Management Practices" for pesticide and herbicide application.
 - Riparian Corridor Watercourse, Wetland, or Stormwater Drainage. Pesticides, herbicides, and fertilizers shall not be applied within 50 feet of a riparian corridor watercourse, wetland, or stormwater drainage except as allowed by the Director for the following circumstances and when pesticide or herbicide applications will be done by a City approved applicator:
 - The State or local Health Department recommends or directs their use to address a threat to public health;
 - A county, State, or Federal agency with jurisdiction directs their use for control of a State-listed noxious weed or plant pests covered by the Arizona State Department of Agriculture plant pest program and non-chemical alternatives have been evaluated and deemed ineffective;
 - The Director finds that the use of pesticides and herbicides will have no adverse impact to fish and wildlife. Such a determination may be in the form of best management practices or an integrated pest management plan;
 - The use of a herbicide to control invasive plants would have less overall environmental impact than other control strategies; or
 - There is a serious threat to public safety, health, or the environment.

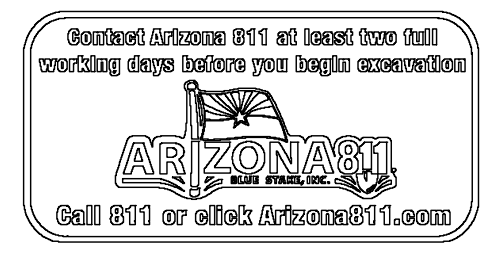
- SECTION 13-18-005-0001 Responsibility**
- The adjacent property owner is responsible for maintenance of the right-of-way area bounded by the property line and the face of the curb (or edge of road pavement) for the full width of the property. A maintenance district, a business improvement district, homeowners' association, or the City of Flagstaff may, by prior agreement, be responsible for such maintenance. The City of Flagstaff performs maintenance of all medians. Contact the Parks Division for more information. (Ord. 2017-22, 07/05/2017)
- SECTION 13-18-005-0002 General Requirements**
- Maintenance shall be performed on an ongoing basis as needed.
 - Required maintenance includes irrigation, weeding, mowing, pruning, replacement of dead or diseased plants, cleaning, raking, snow removal, pest control, and otherwise caring for and repairing all the landscape materials, including sidewalks and street trees. Required maintenance also includes removal of wildfire fuels such as dead plants and limbs, thinning of tree and shrub densities, and weed control.
 - Replacement and repairs shall be in accordance with the approved streetscape plan, or in the absence thereof, in accordance with these standards.
 - Maintenance priority shall be given to installation, placement, and planting safety items including lines of sight, blockage, and winter icing.
 - Maintenance of plant materials, specifically including trimming and pruning, shall conform to applicable horticulture and arboriculture standards.
 - General weeds shall not be permitted to exceed a height of six (6) inches.
 - Noxious weeds shall be entirely removed.
 - Cut or otherwise removed weeds shall be collected and properly disposed of and shall not be left on the ground. (Ord. 2017-22, 07/05/2017)
- SECTION 13-18-005-0003 Irrigation**
- Newly planted trees should be watered daily for the first two (2) weeks and then once a week from April through October and approximately twice a month through the winter.
 - In the third year, if there has been a lack of moisture, extreme heat or drying winds, this amount of watering may still be necessary.
 - The watering schedule for mature trees will be determined based on the species, the soil, and the weather.
 - Irrigation shall be monitored to avoid over- or under-watering. Watering programs and automatic systems shall be adjusted as warranted.
 - Automatic irrigation systems shall receive appropriate design, installation, maintenance, repair, and winterizing so as to comply with water conservation strategies. (Ord. 2017-22, 07/05/2017)
- SECTION 13-18-006-0001 Tree Protection Measures**
- Construction in rights-of-way, including landscaping, shall be subject to the tree preservation and protection measures of Title 10, Flagstaff Zoning Code, which are herein incorporated including procedures and requirements for root protection, temporary fencing, and grade changes.
 - Dirt, rock, construction materials, equipment, and debris should not be stored around existing trees.
 - Trees to be retained should be protected with suitable fencing such as plywood boarding. (Ord. 2017-22, 07/05/2017)

STAMP

CITY
STAMP

Copyright ©. The following drawings are instruments of service to the Landscape Architect. They are not products of design. All ideas, designs, arrangements, and plans indicated or represented by this drawing are owned by and the property of the designer, and were created, evolved, and developed for use on and in connection with the specified project. None of such ideas, designs, arrangements, or plans shall be used by or disclosed to any person, firm, or corporation for any purpose whatsoever without the written permission of the designer.

U.S. Federal Courthouse
1535 and 1609 W Route 66
Flagstaff, AZ 86001



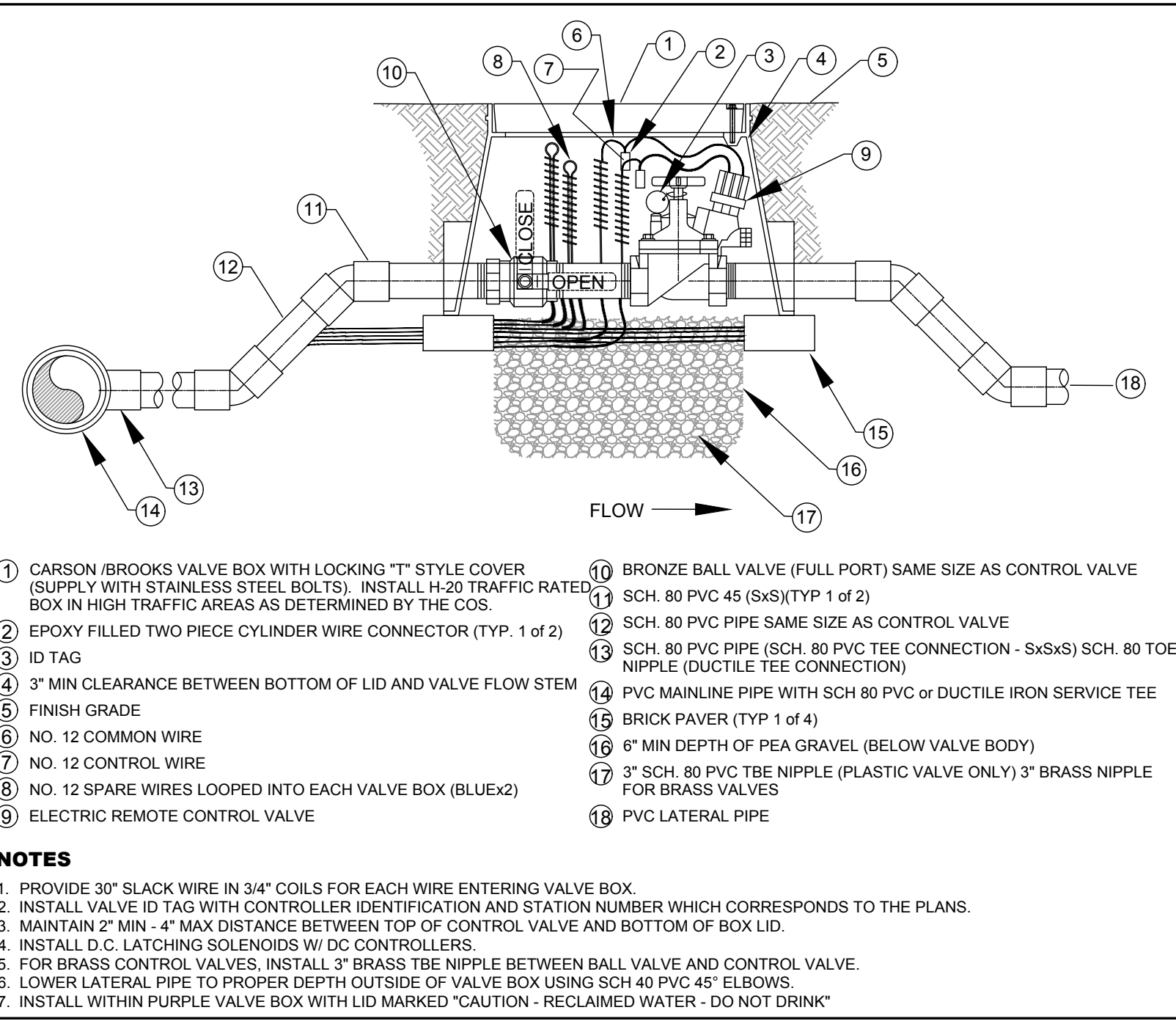
Change Revisions By

Drawn by: FD
Checked by: DB
Drawing Date: 2024-09-26
Phase: 90% Construction
COF Project: PZ-23-00042-02

Landscape Details

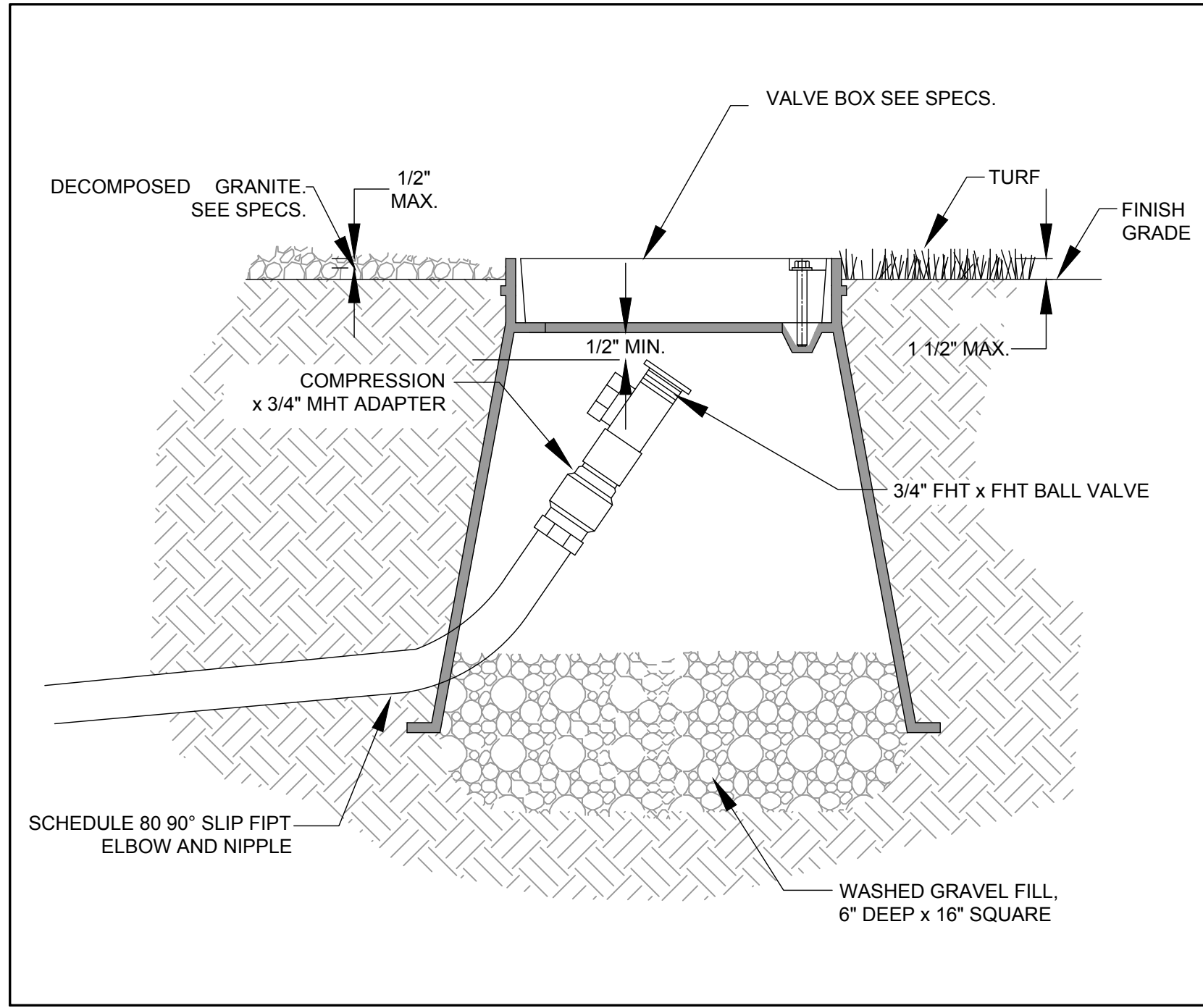
LA-04

Irrigation Remote Control Valve (N.T.S.)



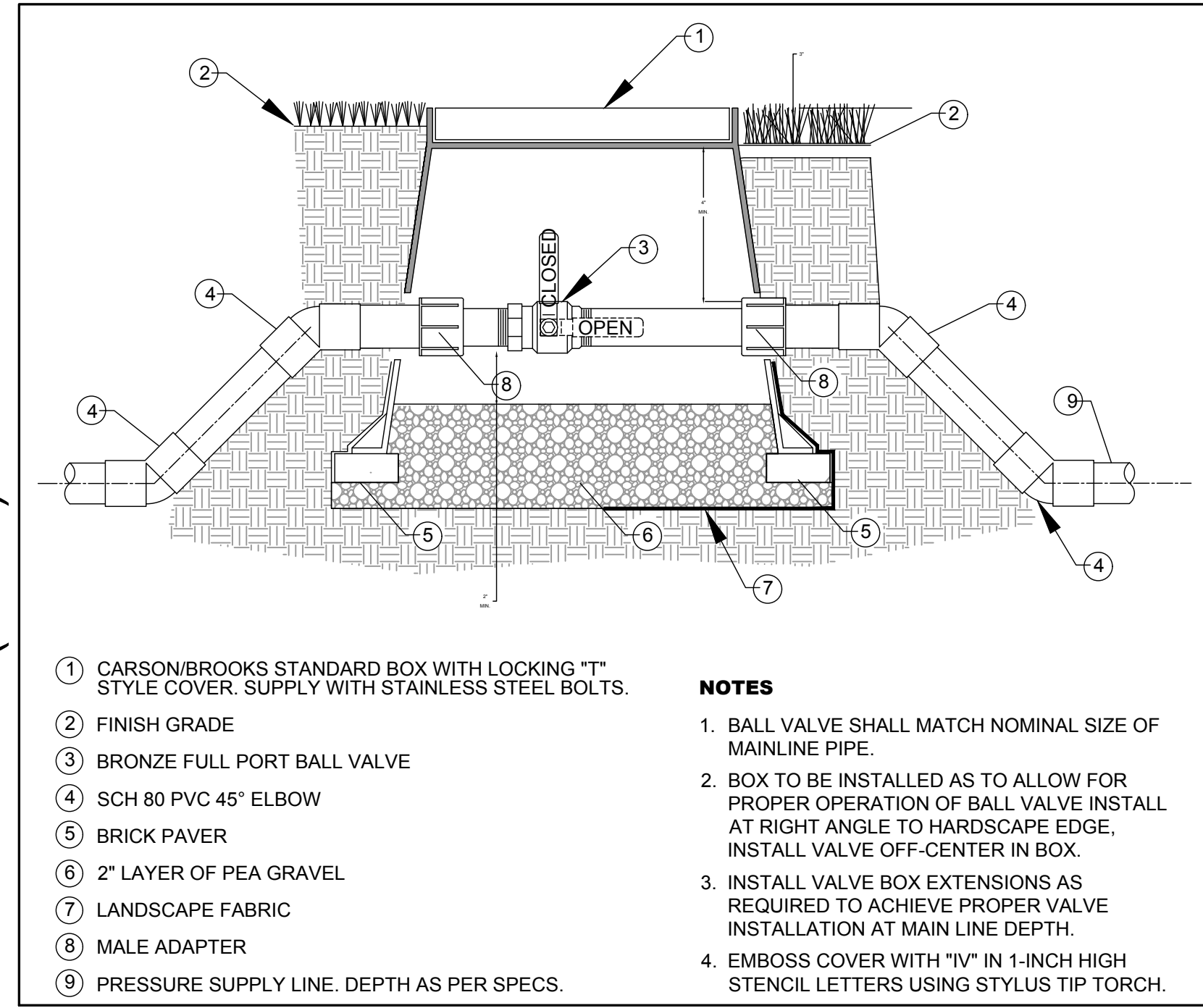
- 1 CARSON/BROOKS VALVE BOX WITH LOCKING "T" STYLE COVER (SUPPLY WITH STAINLESS STEEL BOLTS). INSTALL IN 20 TRAFFIC RATED BOX IN HIGH TRAFFIC AREAS AS DETERMINED BY THE COS.
 - 2 EPOXY FILLED TWO PIECE CYLINDER WIRE CONNECTOR (TYP. 1 of 2)
 - 3 ID TAG
 - 4 3" MIN CLEARANCE BETWEEN BOTTOM OF LID AND VALVE FLOW STEM
 - 5 FINISH GRADE
 - 6 NO. 12 COMMON WIRE
 - 7 NO. 12 CONTROL WIRE
 - 8 NO. 12 SPARE WIRES LOOPED INTO EACH VALVE BOX (BLUE)X2
 - 9 ELECTRIC REMOTE CONTROL VALVE
 - 10 BRONZE BALL VALVE (FULL PORT) SAME SIZE AS CONTROL VALVE
 - 11 SCH. 80 PVC 45 (SxS)(TYP 1 of 2)
 - 12 SCH. 80 PVC PIPE SAME SIZE AS CONTROL VALVE
 - 13 SCH. 80 PVC PIPE (SCH. 80 PVC TEE CONNECTION - SxSxS) SCH. 80 TOE NIPPLE (DUCTILE TEE CONNECTION)
 - 14 PVC MAINLINE PIPE WITH SCH. 80 PVC or DUCTILE IRON SERVICE TEE
 - 15 BRICK PAVER (TYP 1 of 4)
 - 16 6" MIN DEPTH OF PEA GRAVEL (BELOW VALVE BODY)
 - 17 3" SCH. 80 PVC TEE NIPPLE (PLASTIC VALVE ONLY) 3" BRASS NIPPLE FOR BRASS VALVES
 - 18 PVC LATERAL PIPE
- NOTES**
1. PROVIDE 30" SLACK WIRE IN 3/4" COILS FOR EACH WIRE ENTERING VALVE BOX.
 2. INSTALL VALVE ID TAG WITH CONTROLLER IDENTIFICATION AND STATION NUMBER WHICH CORRESPONDS TO THE PLANS.
 3. MAINTAIN 2" MIN. - 4" MAX DISTANCE BETWEEN TOP OF CONTROL VALVE AND BOTTOM OF BOX LID.
 4. INSTALL D.C. LATCHING SOLENOIDS W/ DC CONTROLLERS.
 5. FOR BRASS CONTROL VALVES, INSTALL 3" BRASS TEE NIPPLE BETWEEN BALL VALVE AND CONTROL VALVE.
 6. LOWER LATERAL PIPE TO PROPER DEPTH OUTSIDE OF VALVE BOX USING SCH. 40 PVC 45° ELBOWS.
 7. INSTALL WITHIN PURPLE VALVE BOX WITH LID MARKED "CAUTION - RECLAIMED WATER - DO NOT DRINK"

End Line Flush (N.T.S.)



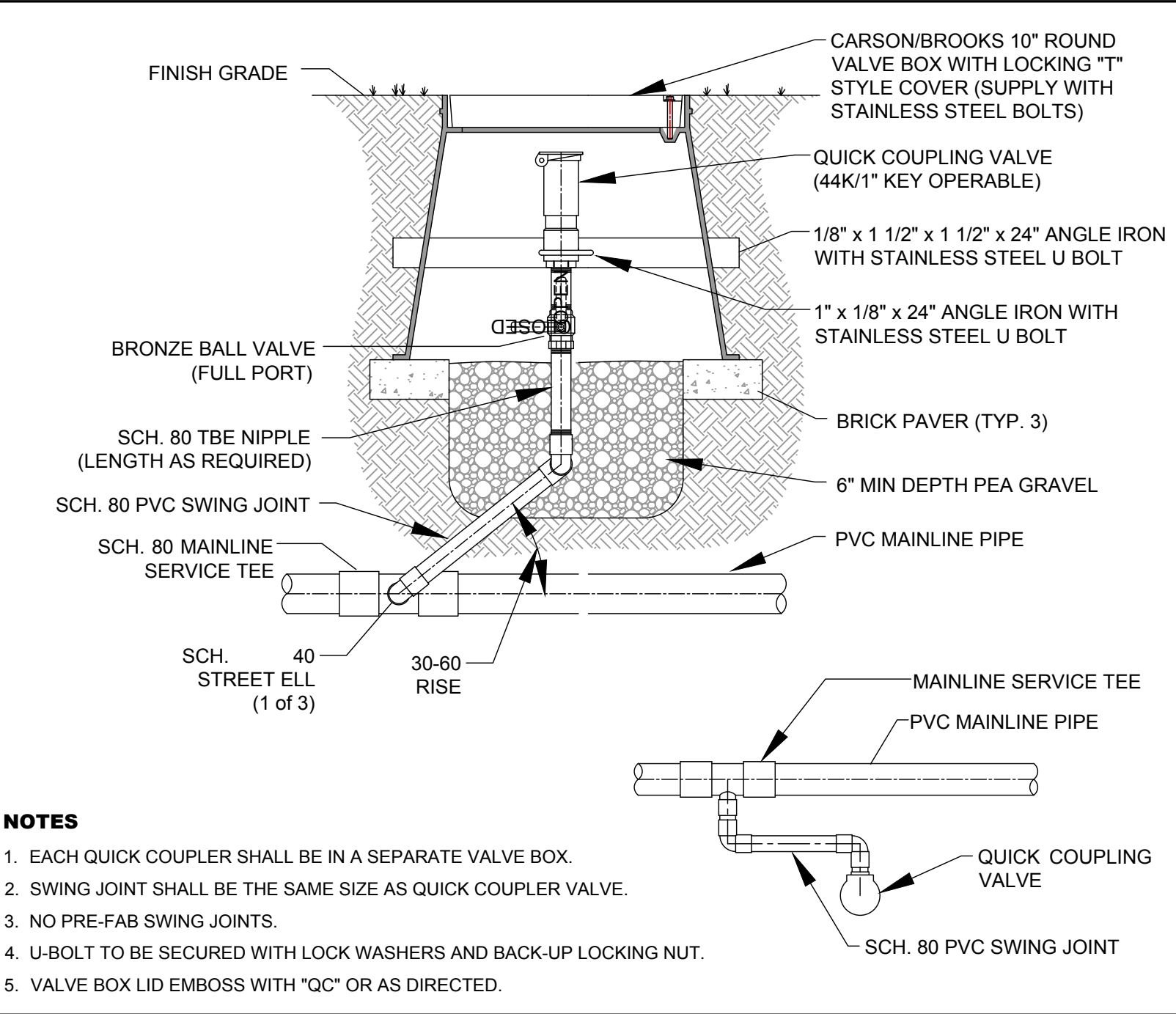
- VALVE BOX SEE SPECS.
- DECOMPOSED GRANITE - SEE SPECS. 1/2" MAX.
- TURF
- FINISH GRADE
- 1/2" MIN.
- 1-1/2" MAX.
- COMPRESSION x 3/4" MHT ADAPTER
- 3/4" FHT x FHT BALL VALVE
- SCHEDULE 80 90° SLIP FIPT ELBOW AND NIPPLE
- WASHED GRAVEL FILL, 6" DEEP x 16" SQUARE

Ball Valve Detail (N.T.S.)



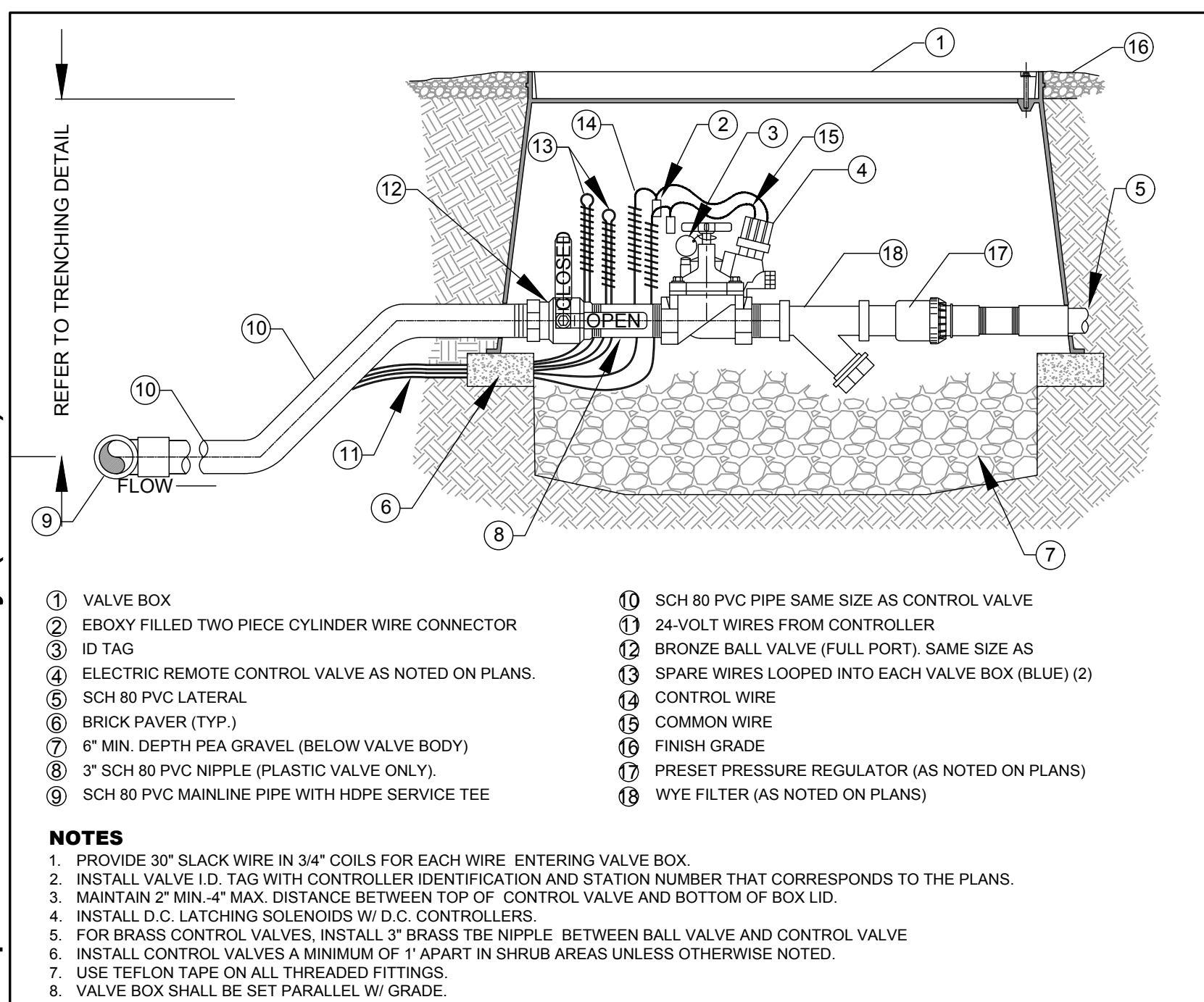
- 1 CARSON/BROOKS STANDARD BOX WITH LOCKING "T" STYLE COVER. SUPPLY WITH STAINLESS STEEL BOLTS.
 - 2 FINISH GRADE
 - 3 BRONZE FULL PORT BALL VALVE
 - 4 SCH 80 PVC 45° ELBOW
 - 5 BRICK PAVER
 - 6 2" LAYER OF PEA GRAVEL
 - 7 LANDSCAPE FABRIC
 - 8 MALE ADAPTER
 - 9 PRESSURE SUPPLY LINE. DEPTH AS PER SPECS.
- NOTES**
1. BALL VALVE SHALL MATCH NOMINAL SIZE OF MAINLINE PIPE.
 2. BOX TO BE INSTALLED AS TO ALLOW FOR PROPER OPERATION OF BALL VALVE. INSTALL AT RIGHT ANGLE TO HARDSCAPE EDGE, INSTALL VALVE OFF-CENTER IN BOX.
 3. INSTALL VALVE BOX EXTENSIONS AS REQUIRED TO ACHIEVE PROPER VALVE INSTALLATION AT MAIN LINE DEPTH.
 4. EMBOSS COVER WITH "IV" IN 1-INCH HIGH STENCIL LETTERS USING STYLUS TIP TORCH.

Quick Coupler Assembly (N.T.S.)



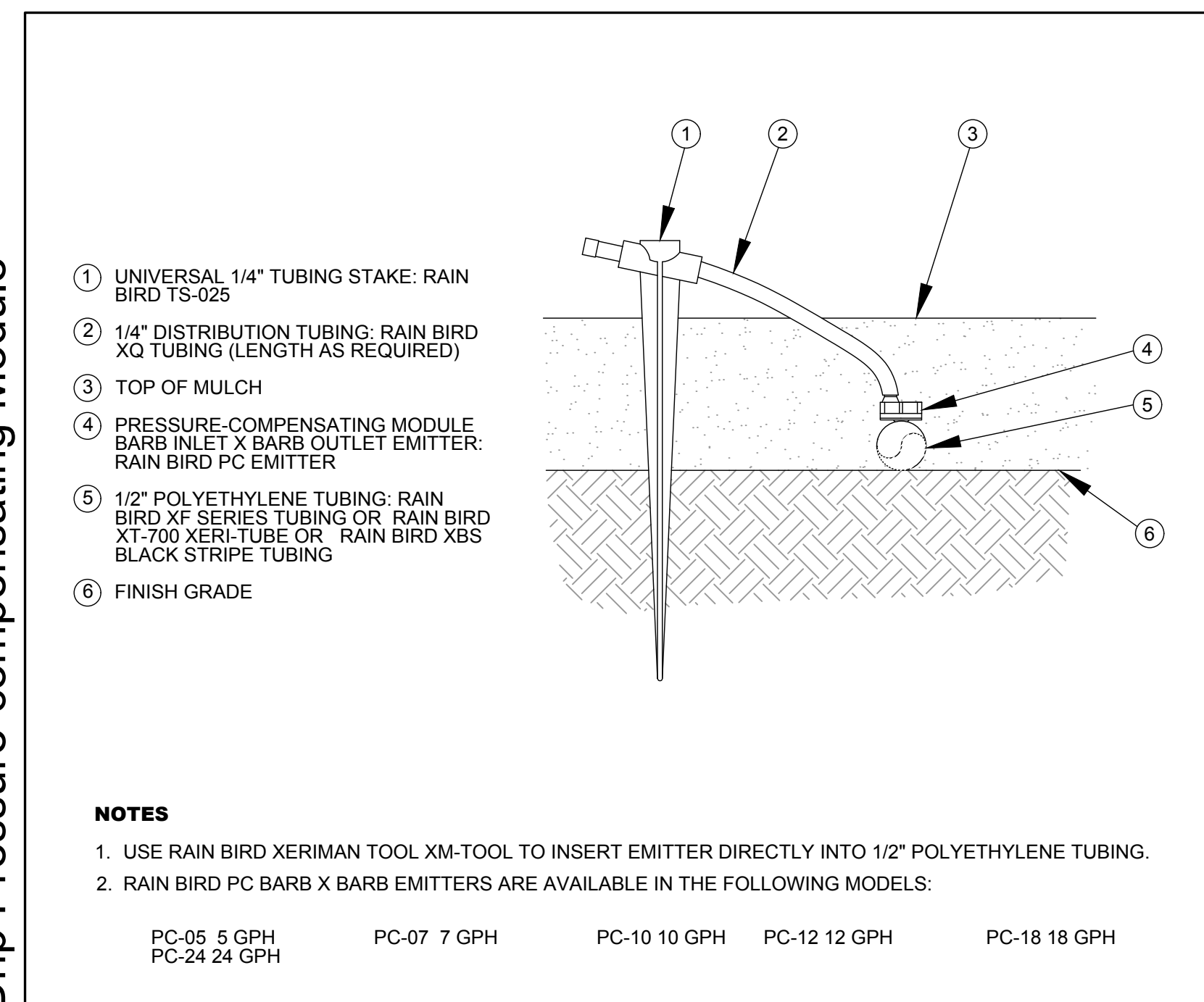
- FINISH GRADE
- CARSON/BROOKS 10" ROUND VALVE BOX WITH LOCKING "T" STYLE COVER (SUPPLY WITH STAINLESS STEEL BOLTS)
- QUICK COUPLING VALVE (44K/1" KEY OPERABLE)
- 1/8" x 1 1/2" x 1 1/2" x 24" ANGLE IRON WITH STAINLESS STEEL U BOLT
- 1" x 1/8" x 24" ANGLE IRON WITH STAINLESS STEEL U BOLT
- BRONZE BALL VALVE (FULL PORT)
- SCH. 80 TEE NIPPLE (LENGTH AS REQUIRED)
- SCH. 80 PVC SWING JOINT
- SCH. 80 MAINLINE SERVICE TEE
- SCH. 40 STREET ELL (1 of 3)
- 30-60 RISE
- BRICK PAVER (TYP. 3)
- 6" MIN DEPTH PEA GRAVEL
- PVC MAINLINE PIPE
- MAINLINE SERVICE TEE
- PVC MAINLINE PIPE
- QUICK COUPLING VALVE
- SCH. 80 PVC SWING JOINT
- NOTES**
1. EACH QUICK COUPLER SHALL BE IN A SEPARATE VALVE BOX.
 2. SWING JOINT SHALL BE THE SAME SIZE AS QUICK COUPLER VALVE.
 3. NO PRE-FAB SWING JOINTS.
 4. U-BOLT TO BE SECURED WITH LOCK WASHERS AND BACK-UP LOCKING NUT.
 5. VALVE BOX LID EMBOSS WITH "QC" OR AS DIRECTED.

Drip Valve Assembly (N.T.S.)



- REFER TO TRENCHING DETAIL
- VALVE BOX
- EPOXY FILLED TWO PIECE CYLINDER WIRE CONNECTOR
- ID TAG
- ELECTRIC REMOTE CONTROL VALVE AS NOTED ON PLANS.
- SCH 80 PVC LATERAL
- BRICK PAVER (TYP. 3)
- 6" MIN. DEPTH PEA GRAVEL (BELOW VALVE BODY)
- 3" SCH 80 PVC NIPPLE (PLASTIC VALVE ONLY)
- SCH 80 PVC MAINLINE PIPE WITH HDPE SERVICE TEE
- SCH 80 PVC PIPE SAME SIZE AS CONTROL VALVE
- 24-VOLT WIRES FROM CONTROLLER
- BRONZE BALL VALVE (FULL PORT). SAME SIZE AS
- SPARE WIRES LOOPED INTO EACH VALVE BOX (BLUE) (2)
- CONTROL WIRE
- COMMON WIRE
- FINISH GRADE
- 3" SCH 80 PVC NIPPLE (PLASTIC VALVE ONLY)
- PRESET PRESSURE REGULATOR (AS NOTED ON PLANS)
- WYE FILTER (AS NOTED ON PLANS)
- NOTES**
1. PROVIDE 30" SLACK WIRE IN 3/4" COILS FOR EACH WIRE ENTERING VALVE BOX.
 2. INSTALL VALVE I.D. TAG WITH CONTROLLER IDENTIFICATION AND STATION NUMBER THAT CORRESPONDS TO THE PLANS.
 3. MAINTAIN 2" MIN.-4" MAX DISTANCE BETWEEN TOP OF CONTROL VALVE AND BOTTOM OF BOX LID.
 4. INSTALL D.C. LATCHING SOLENOIDS W/ D.C. CONTROLLERS.
 5. FOR BRASS CONTROL VALVES, INSTALL 3" BRASS TEE NIPPLE BETWEEN BALL VALVE AND CONTROL VALVE
 6. INSTALL CONTROL VALVES A MINIMUM OF 1' APART IN SHRUB AREAS UNLESS OTHERWISE NOTED.
 7. USE TEFLON TAPE ON ALL THREADED FITTINGS.
 8. VALVE BOX SHALL BE SET PARALLEL W/ GRADE.

Drip Pressure-compensating Module



- 1 UNIVERSAL 1/4" TUBING STAKE: RAIN BIRD TS-025
 - 2 1/4" DISTRIBUTION TUBING: RAIN BIRD XQ TUBING (LENGTH AS REQUIRED)
 - 3 TOP OF MULCH
 - 4 PRESSURE-COMPENSATING MODULE BARB INLET X BARB OUTLET EMITTER: RAIN BIRD PC EMITTER
 - 5 1/2" POLYETHYLENE TUBING: RAIN BIRD XF SERIES TUBING OR RAIN BIRD XT-700 XERI-TUBE OR RAIN BIRD XBS BLACK STRIPE TUBING
 - 6 FINISH GRADE
- NOTES**
1. USE RAIN BIRD XERIMAN TOOL XM-TOOL TO INSERT EMITTER DIRECTLY INTO 1/2" POLYETHYLENE TUBING.
 2. RAIN BIRD PC BARB X BARB EMITTERS ARE AVAILABLE IN THE FOLLOWING MODELS:
- | | | | | |
|--------------|-------------|--------------|--------------|--------------|
| PC-05 5 GPH | PC-07 7 GPH | PC-10 10 GPH | PC-12 12 GPH | PC-18 18 GPH |
| PC-24 24 GPH | | | | |

STAMP

CITY
STAMP

Copyright ©. The following drawings are instruments of service to the Landscape Architect. They are not products of design. All ideas, designs, arrangements, and plans indicated or represented by this drawing are owned by and the property of the designer, and were created, evolved, and developed for use on and in connection with the specified project. None of such ideas, designs, arrangements, or plans shall be used by or disclosed to any person, firm, or corporation for any purpose whatsoever without the written permission of the designer.

U.S. Federal Courthouse

1535 and 1609 W Route 66
 Flagstaff, AZ 86001



Change Revisions By

Drawn by: FD
 Checked by: DB
 Drawing Date: 2024-09-26
 Phase: 90% Construction
 COF Project: PZ-23-00042-02

Landscape Details (cont.)

LA-05