

Inner Basin Waterline Wildlife Drinkers

Intergovernmental Agreement with
Arizona Game & Fish

March 4, 2025





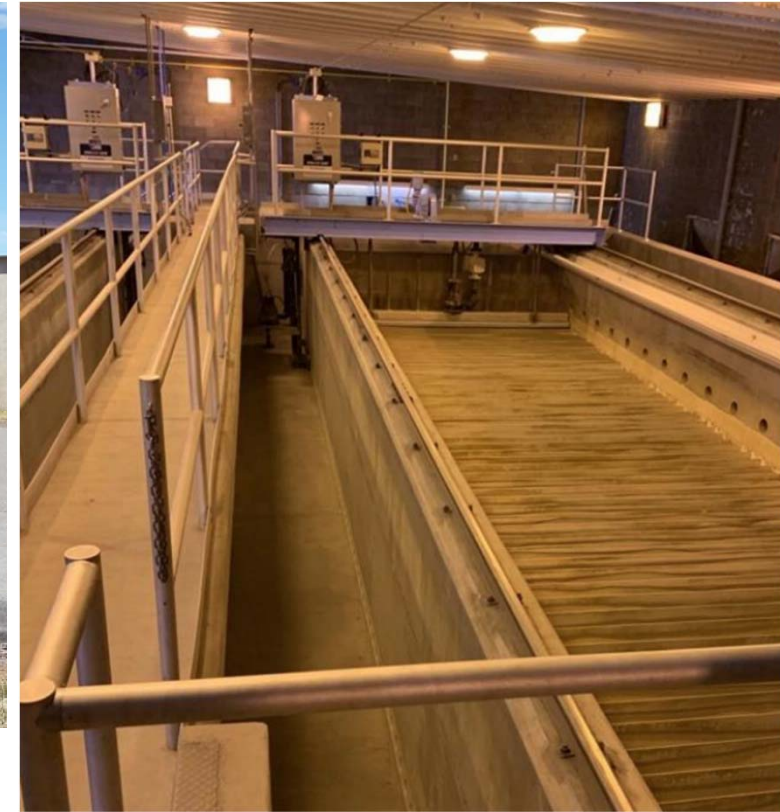
Inner Basin Wildlife Drinkers



The Inner Basin Pipeline carries both spring and well water.



Inner Basin Wildlife Drinkers



When flow rates and quality are sufficient water is treated at the North Reservoir Filtration Plant and pumped into town.



Inner Basin Wildlife Drinkers



When both flow rates and quality are insufficient water is diverted to a vintage exposed reservoir and used for fire fighting etc.



Inner Basin Wildlife Drinkers



Spring water used to fill Francis Short Pond in fall of 2023.



Inner Basin Wildlife Drinkers



Wildlife Drinkers have been in use since 1992 along the IB Pipeline.



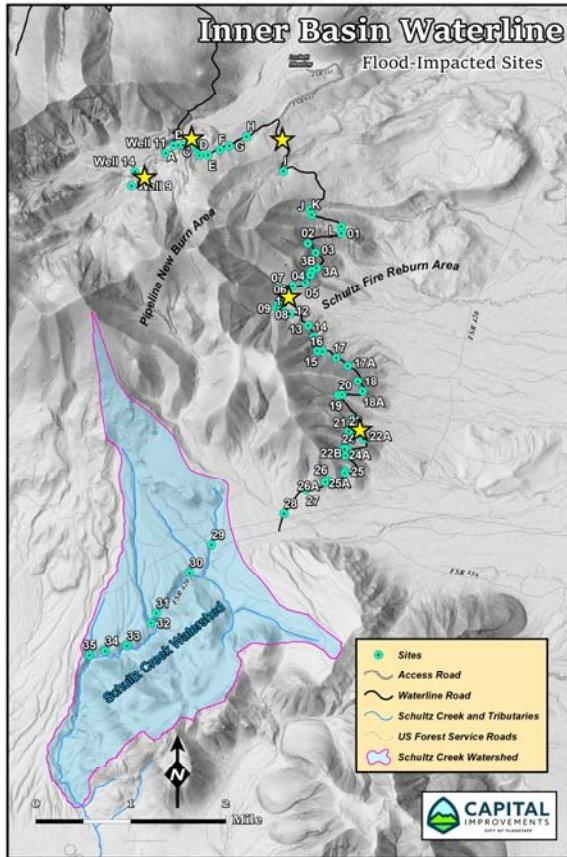
Inner Basin Wildlife Drinkers



Due to the Schultz and Pipeline Fires existing drinkers are dilapidated



Inner Basin Wildlife Drinkers



AZGFD propose to re-establish existing drinkers and add two additional.



Questions?

Thank you!