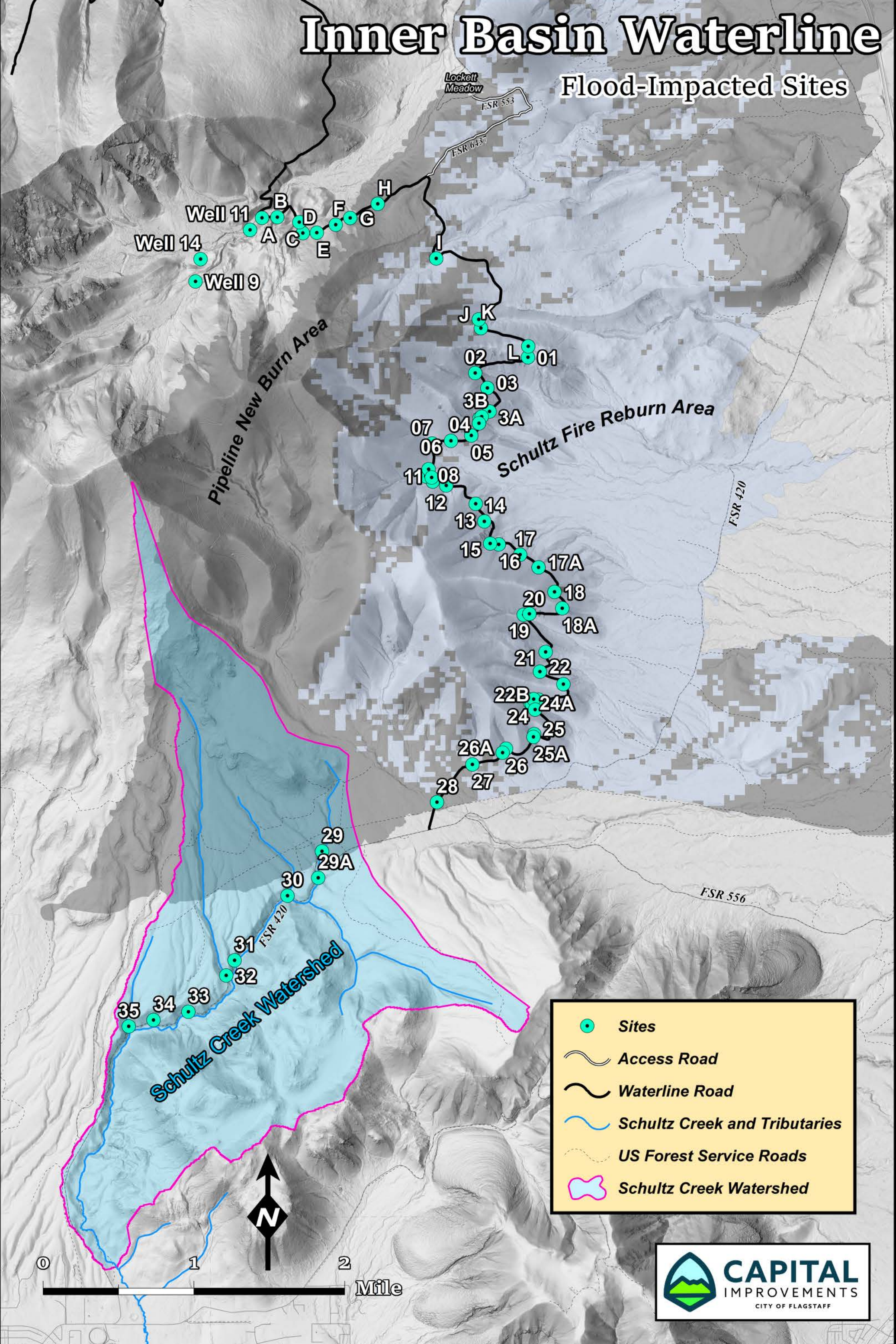


Inner Basin Waterline

Flood-Impacted Sites



Well 11
Well 14
Well 9

Pipeline New Burn Area

Schultz Fire Reburn Area

Schultz Creek Watershed

-  Sites
-  Access Road
-  Waterline Road
-  Schultz Creek and Tributaries
-  US Forest Service Roads
-  Schultz Creek Watershed

