

AMENDMENT NO. 1
CONTRACT FOR PROFESSIONAL SERVICES
Contract No.: 2018-24

LAKE MARY TREATMENT PLANT BASIN DESIGN

This Amendment No. 1 is entered into on this 8th day of January, 2025, to the Contract for Professional Services dated the 15th day of January, 2020, hereinafter referred to as the “Contract”, between the City of Flagstaff, a political subdivision of the state of Arizona (“City”) and Brown and Caldwell, a California corporation (“Firm”).

RECITALS:

WHEREAS, the City continues to desire receiving and the Firm continues to be able to provide professional architect/engineering services for public works projects; and

WHEREAS, the first change order to the Contract added Construction Administration Services to the Firm’s scope of work and increased its compensation by \$196,000; and

WHEREAS, the City now wishes to authorize certain Preconstruction Services and extend the term of the Contract;

NOW, THEREFORE, in consideration for the mutual promises contained herein the City and the Firm (“the Parties”) agree as follows:

Scope of Work: This Amendment No. 1 authorizes Firm to perform the Preconstruction Services described in the attached Exhibit A, dated December 30, 2024 (the “Services”).

Compensation: The Firm’s compensation for the Services is detailed in the attached Exhibit B – Fee Proposal, which increases Firm’s compensation by \$63,073.

Schedule of Services: The Firm agrees to perform the Services in accordance with the attached Exhibit C – CMAR Schedule.

Unless terminated pursuant to the Standard Terms and Conditions (T34), the Parties agree the term of the Contract shall be for a period of three (3) years from execution of this Amendment No. 1 with an option to renew for two (2), one (1)-year periods.

[Signature Page Follows]

BROWN AND CALDWELL

Printed name: _____

Title: _____

CITY OF FLAGSTAFF

Printed name: _____

Titled: _____

Attest:

City Clerk

Approved as to form:

City Attorney's Office

Attachments:

Exhibit A: Scope of Work – Preconstruction Services

Exhibit B: Fee Proposal

Exhibit C: CMAR Schedule

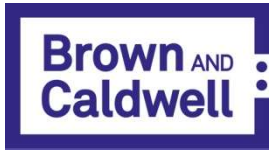


Exhibit A

Scope of Work – Preconstruction Services

City of Flagstaff

Lake Mary Water Treatment Plant

Flocculation and Sedimentation Basin Rehabilitation

December 30, 2024

Project Overview

The City of Flagstaff (City) owns and operates the Lake Mary Water Treatment Plant which includes conventional flocculation and sedimentation facilities that have been in operation for approximately 60 years. The flocculation and sedimentation basin structures and equipment are in deteriorated condition and require replacement and rehabilitation. Brown and Caldwell (BC) prepared and delivered design documents, including drawings and specifications, to the City for the replacement and rehabilitation improvements. The City has selected a Construction Manager at Risk (CMAR) for the project and BC will work with the CMAR during the preconstruction services stage of construction. BC is also under contract with the City to provide engineering services during construction.

Preconstruction services will consist of the following tasks:

1. Preconstruction
2. GMP 1 – Construction Budget Development

The objective of this change order is to provide preconstruction services to assist the CMAR with concrete repair scoping, concrete repair investigations, GMP development, and assist in planning and coordination of maintenance of plant operations.

Phase 100 Preconstruction Services

For this change order, BC will provide preconstruction services associated with the scoping and development of GMP 1.

Task 101 Preconstruction

BC's project manager, a process mechanical engineer, and a project engineer will support the development of GMP 1 and includes the following activities:

1. Attend one on-site kickoff meeting (project manager only).
2. Attend four monthly project meetings that will be held virtually on Microsoft Teams.
3. Attend two price model / GMP presentations and provide review comments (both meetings are held virtually).
4. BC's project manager will attend two site visits with the CMAR. A project engineer will attend one site visit.
5. Provide a review of the subcontractor selection plan.
6. Provide a review of the potholing plan to identify underground utilities.
7. Coordinate with the CMAR and City on alternative equipment specifications, materials, and construction sequencing.
8. Attend two site visits for concrete investigation and review results with a structural engineer.
9. Review electrical report with an electrical engineer.
10. Review 100% construction document development.
11. Provide project management services for 5 months.

Task 102 GMP 1 Construction Budget Development

1. Coordinate with CMAR and City on equipment, materials, construction sequencing, and maintenance of plant operations plans.
2. Provide two reviews of GMP 1 documents.
3. 4 months of project management.

Travel Allowances

Expenses are included for four round-trip site visits from Phoenix, Arizona to the Lake Mary Water Treatment Plant in Flagstaff, Arizona. A travel allowance of \$1,240 is included and accounted for in Phase 101 and Phase 102.

1. 2023 IRS standard mileage rate of 65.5 cents per mile. Assumed four round-trip from Phoenix, Arizona at 170 miles each way. Total amount included for mileage is \$890.
2. Meals and incidentals are included for \$100.
3. One over-night stay is included for \$250 for lodging, meals, and incidentals.

Deliverables:

The following deliverables will be provided upon City request and at the end of the project:

- There are no formal deliverables for this project. Emails will be used for project documentation.
- Engineer will maintain a log to document changes to the Final Construction Documents.

Assumptions

- The entire project will be awarded to one CMAR who will be responsible for all work, including major equipment procurement, installation, and start-up.
- Scope and fee is based on the CMAR preliminary preconstruction schedule. Refer to Exhibit C.
- BC will not develop figures or provide updates to the Final Construction Documents. CMAR will document any changes to the 100% construction documents in the GMP 1 documents.
- CMAR will provide copies of all investigation reports and field work conducted during the development of GMP 1.
- Effort for BC cost estimators to review GMPs, cost models, or update previous construction cost estimates is not included.
- Documentation of meetings, meeting minutes, and action items is the responsibility of the CMAR.

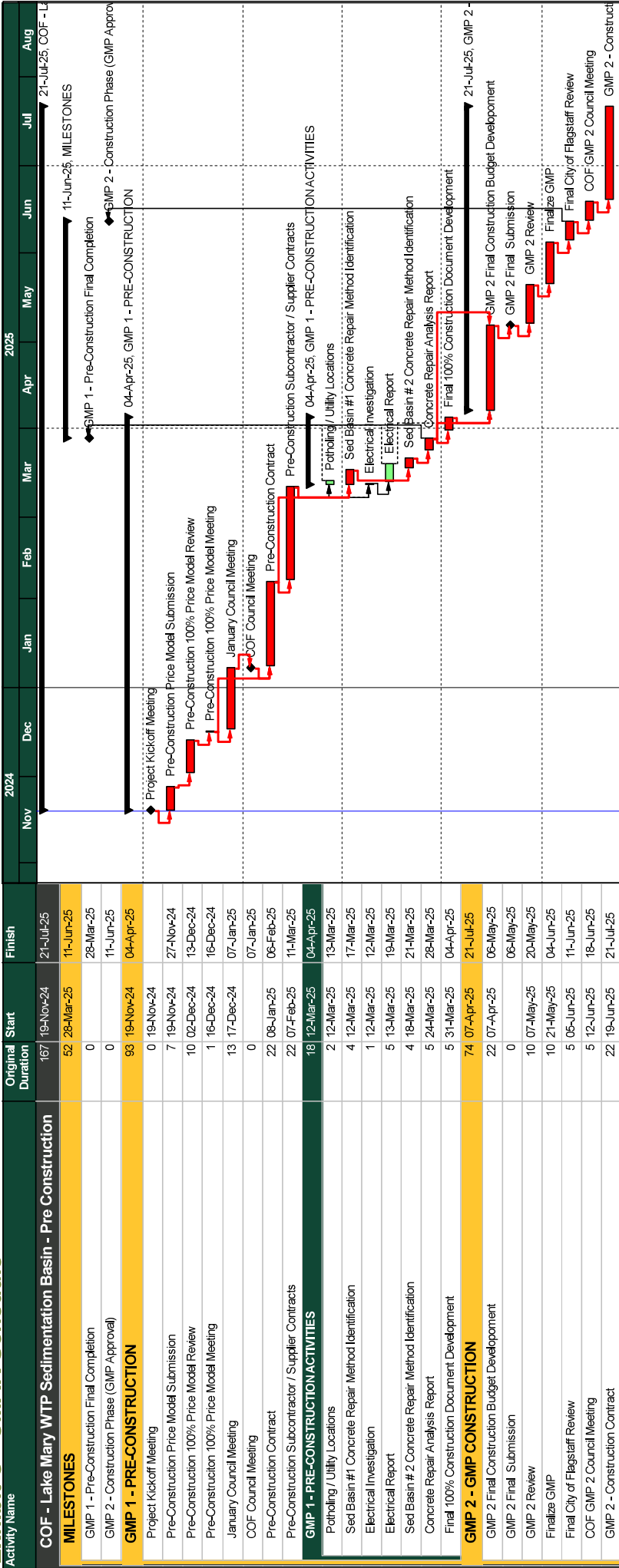
Compensation

Compensation for services stated herein shall be on lump sum basis in the amount shown in Exhibit B. Invoices will be billed monthly on the basis of earned value (percent complete) for the tasks outlined in the Scope of Services.

Exhibit B - Fee Proposal

Phase Description	Task	Task Description	Total Labor Hours	Total Labor Effort	Business & Travel Meals	Lodging	Mileage	Total ODCs	Total Expense Effort	Total Effort
Preconstruction Services			287	61,833	100	250	890	1,240	1,240	63,073
100	****	Default	0	0	0	0	0	0	0	0
	101	Preconstruction Services	161	36,878	100	250	890	1,240	1,240	38,118
		Project Management	33	6,017	0	0	0	0	0	6,017
		Meetings & Site Visits	67	15,609	50	250	445	745	745	16,354
		Concrete Investigation	26	6,940	50	0	445	495	495	7,435
		Procurement Coordination	29	6,430	0	0	0	0	0	6,430
		Review Construction Documents	7	1,882	0	0	0	0	0	1,882
		GMP 1 - Construction Budget								
	102	Development	126	24,955	0	0	0	0	0	24,955
		Project Management	34	6,368	0	0	0	0	0	6,368
		Procurement & MOPO Coordination	72	14,204	0	0	0	0	0	14,204
		Review GMP 1	20	4,383	0	0	0	0	0	4,383
GRAND TOTAL			287	61,833	100	250	890	1,240	1,240	63,073

Exhibit C - CMAR Schedule



Data Date: 19-Nov-24
Print Date: 25-Nov-24
Page 1 of 1

- █ Actual Work
- █ Remaining Work
- █ Critical Remaining Work
- █ Remaining Level of Effort
- █ Actual Level of Effort
- ◆ Milestone

PCL CONSTRUCTION, INC.
CITY OF FLAGSTAFF - LAKE MARY WTP SEDIMENTATION BASIN
IMPROVEMENTS PRE-CONSTRUCTION

