

# City of Flagstaff Civic Space

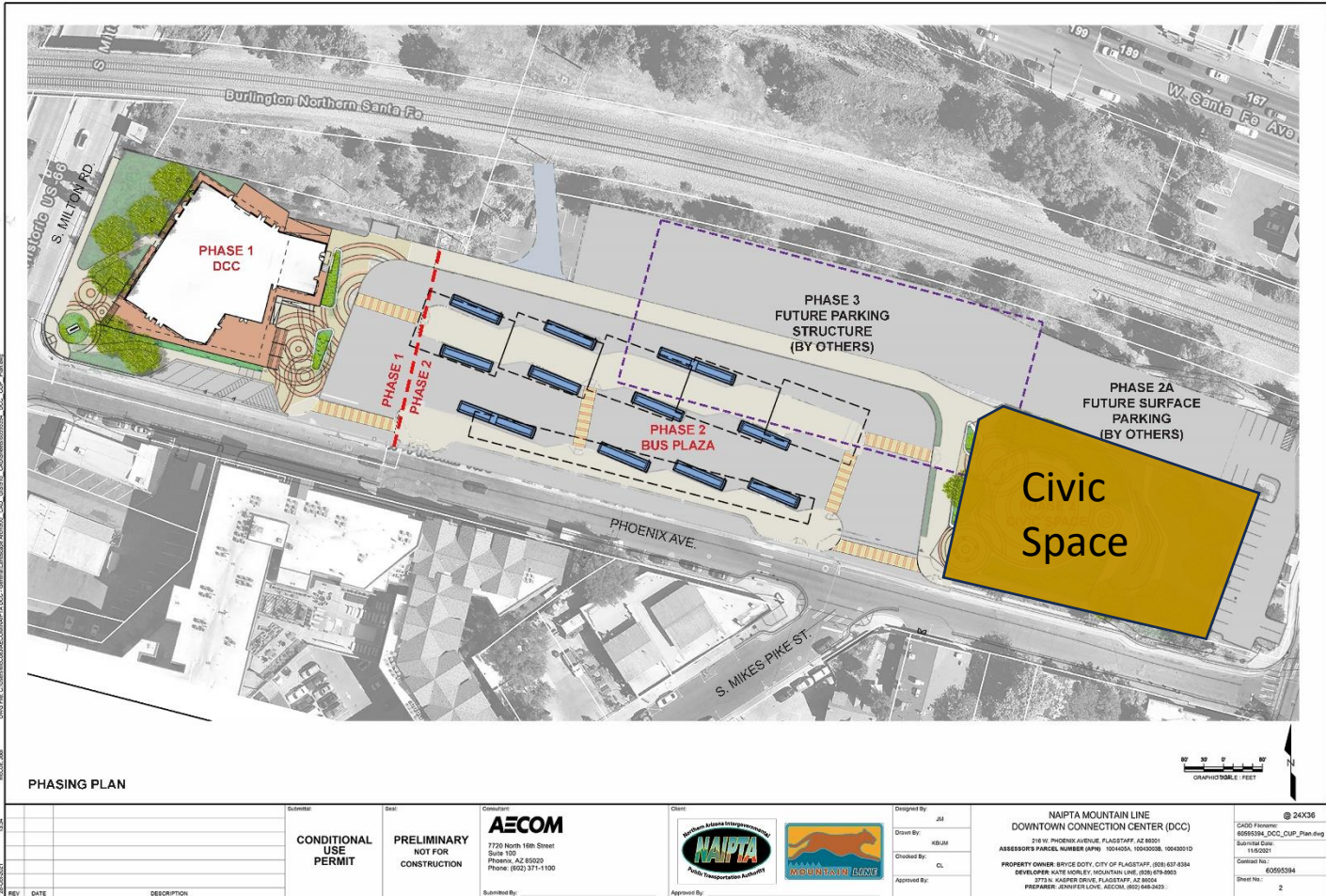


CITY OF FLAGSTAFF CIVIC SPACE | PROGRAM CONCEPTS

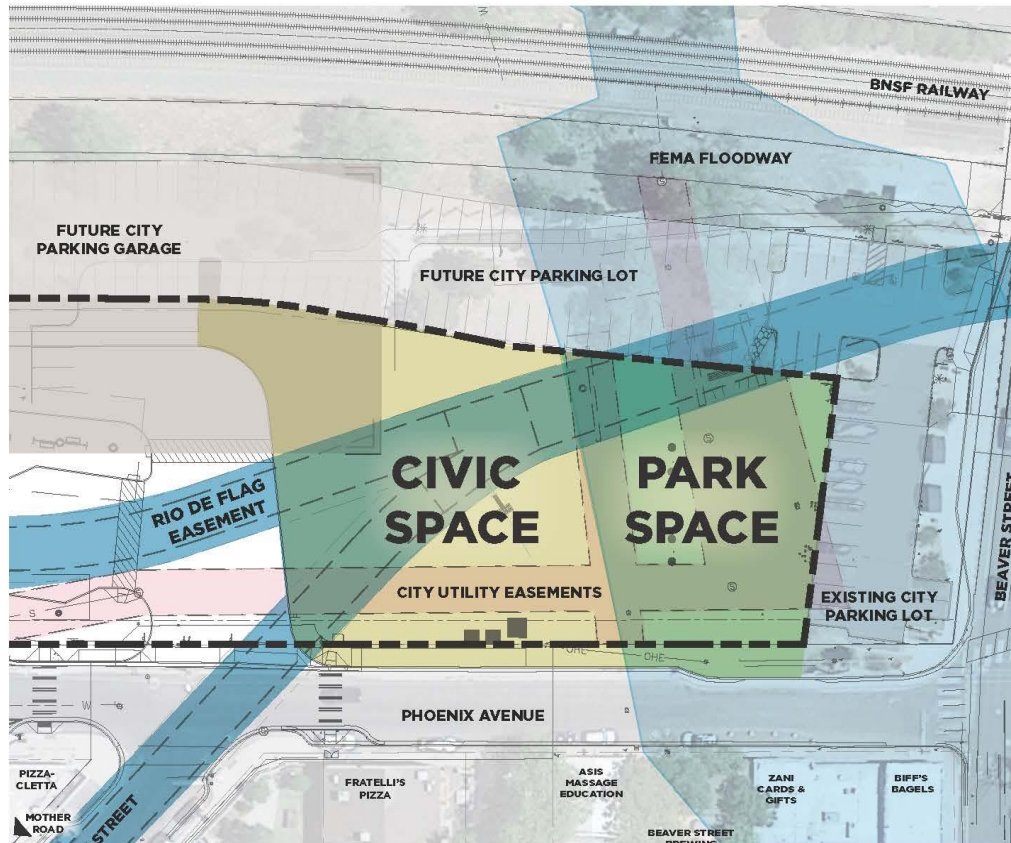
02/21/2025



# Downtown Connection Center Phasing Plan

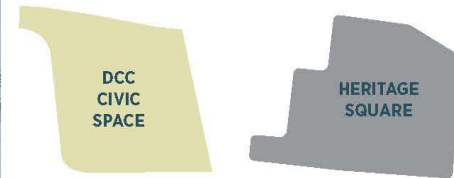


# Site Location

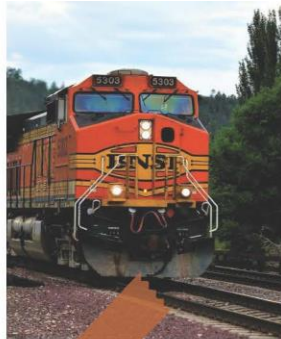
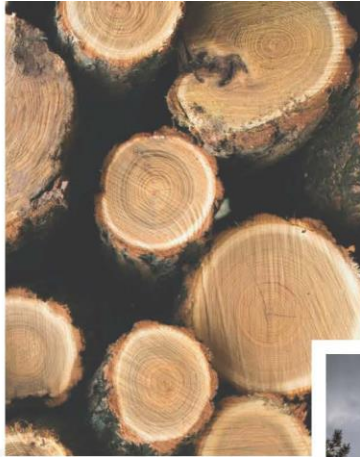


## OPPORTUNITIES & CONSTRAINTS

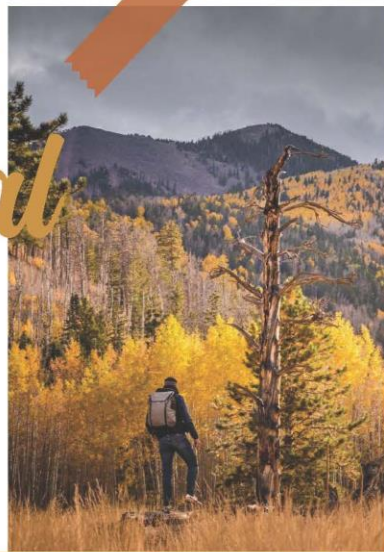
- + UNIQUE PUBLIC SPACE SIMILAR IN SIZE TO HERITAGE SQUARE FOR THE SOUTHSIDE COMMUNITY
- + THERE ARE LIMITATIONS ON THE TYPES AND LOCATIONS OF AMENITIES AND PROGRAM DUE TO EXISTING EASEMENTS, UTILITY CONSTRAINTS AND THE FEMA FLOODWAY



# Public Outreach - Themes



*Natural*  
*Fluid*  
*Kinetic*



CITY OF FLAGSTAFF CIVIC SPACE | PROGRAM CONCEPTS

02/21/2025



# Public Outreach - Themes



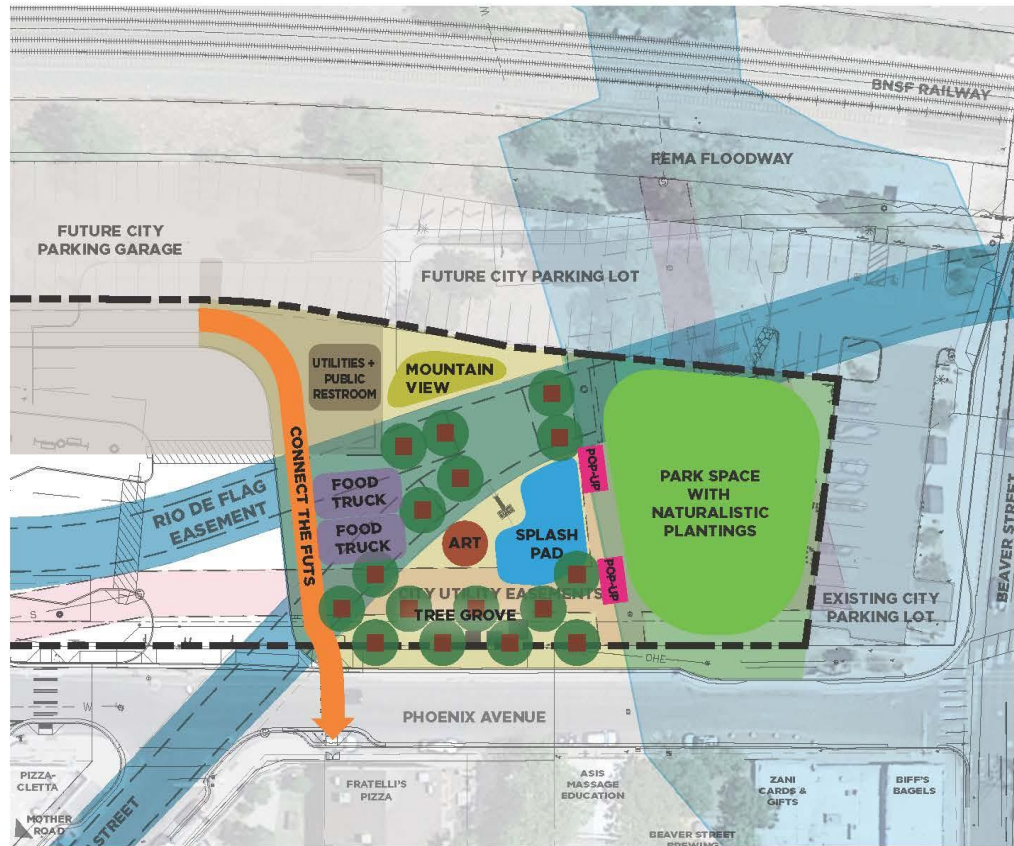
*Modern  
Uplifting  
Celebratory*

CITY OF FLAGSTAFF CIVIC SPACE | PROGRAM CONCEPTS

02/21/2025



# Bubble Diagram



## PRELIMINARY PROGRAM CONCEPTS

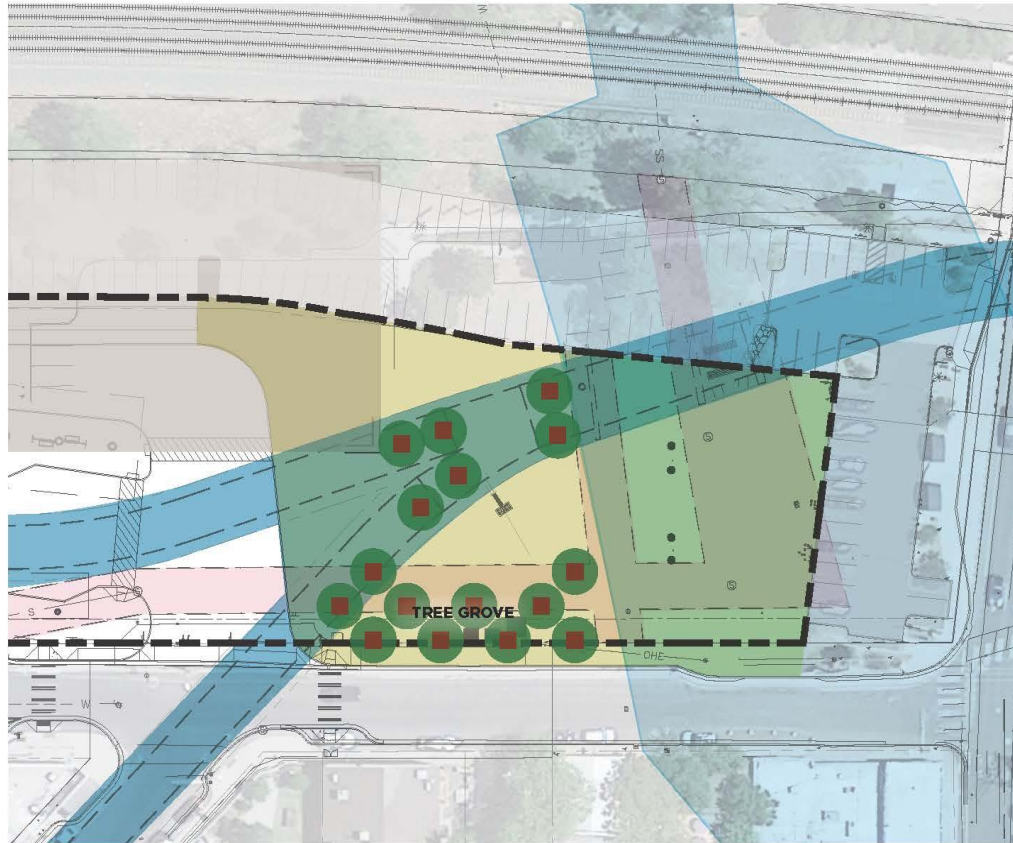
- + PROGRAM IS REFLECTIVE OF CITY OF FLAGSTAFF'S REQUEST FOR AMENITIES FOR THE SPACE. CITY WILL OPERATE AND MAINTAIN THE CIVIC SPACE.
- + PROGRAM ELEMENTS ARE A PRODUCT OF COMMUNITY OUTREACH GOING BACK TO 2020
- + PROGRAM ELEMENTS ARE PLACED TO BEST WORK WITH SITE'S CONSTRAINTS

### LEGEND

	LEASE BOUNDARY		UTILITIES + PUBLIC RESTROOM	BUILDING FOR SPLASH PAD EQUIPMENT AND A PUBLIC RESTROOM
	FUTS TRAIL CONNECTION		MOUNTAIN VIEW	RAISED AREA TO VIEW PEAKS
	TREE IN MOVABLE PLANTER			NATURAL PARK AREA
	SOUTHSIDE GROVE SCULPTURE			INCLUSIVE SPLASH PAD - YEAR ROUND PLAZA
	POP-UP STAGE OR CONCESSION			
	FOOD TRUCK			



# Trees

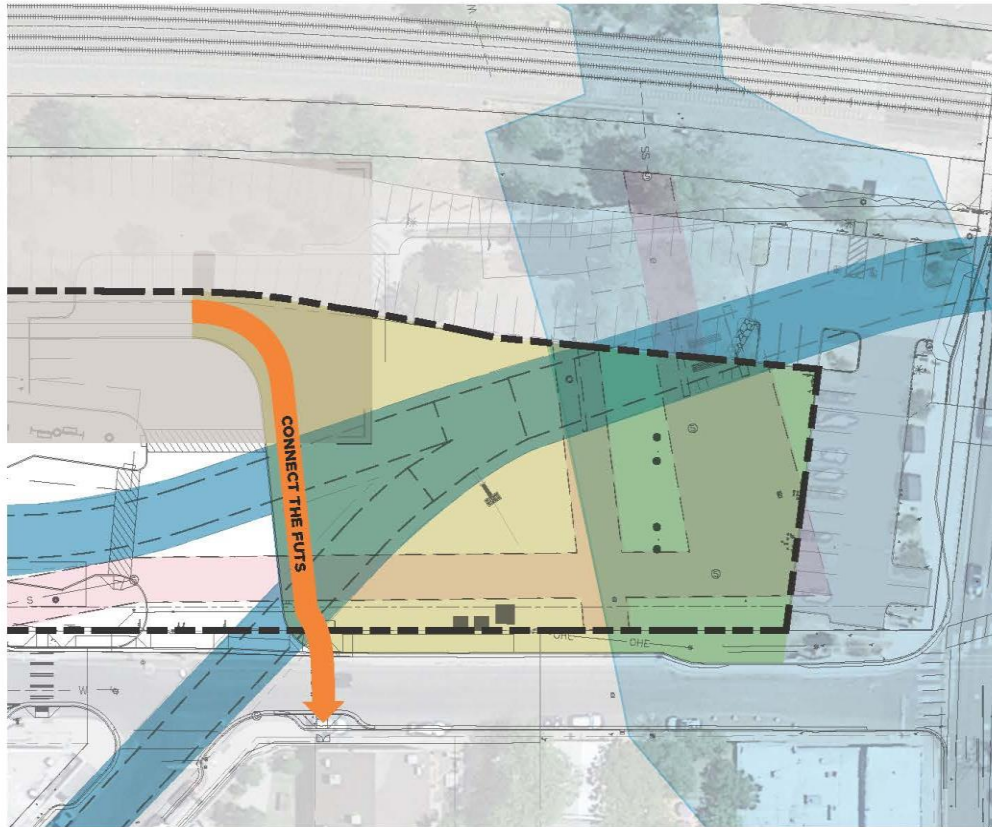


## TREES IN PLANTERS

- + INCORPORATE TREES AND SHADE WITH THE USE OF MOVABLE PLANTERS
- + PLANTERS WOULD INCLUDE A PLACEMAKING ASPECT SUCH AS AN INTERESTING SHAPE OR PATTERN



# FUTS



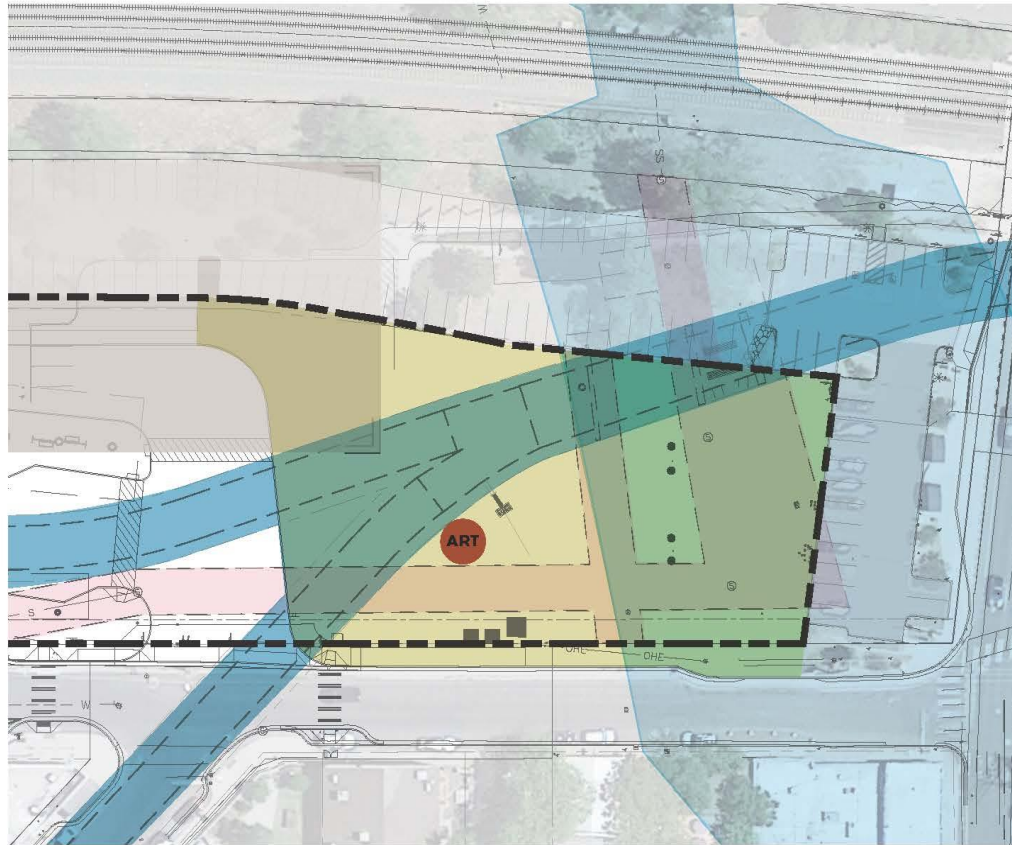
## FUTS CONNECTION

- + INCORPORATE THE FUTS CONNECTION INTO THE CIVIC SPACE USING BEST IN PRACTICE TRAIL CONCEPTS

PROJECT EXAMPLE: MONON BLVD + MIDTOWN PLAZA



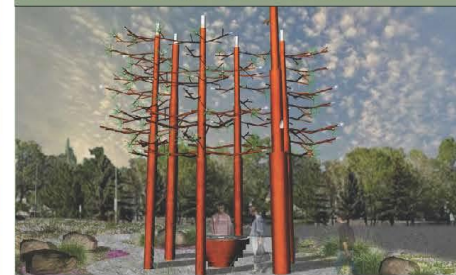
# Public Art



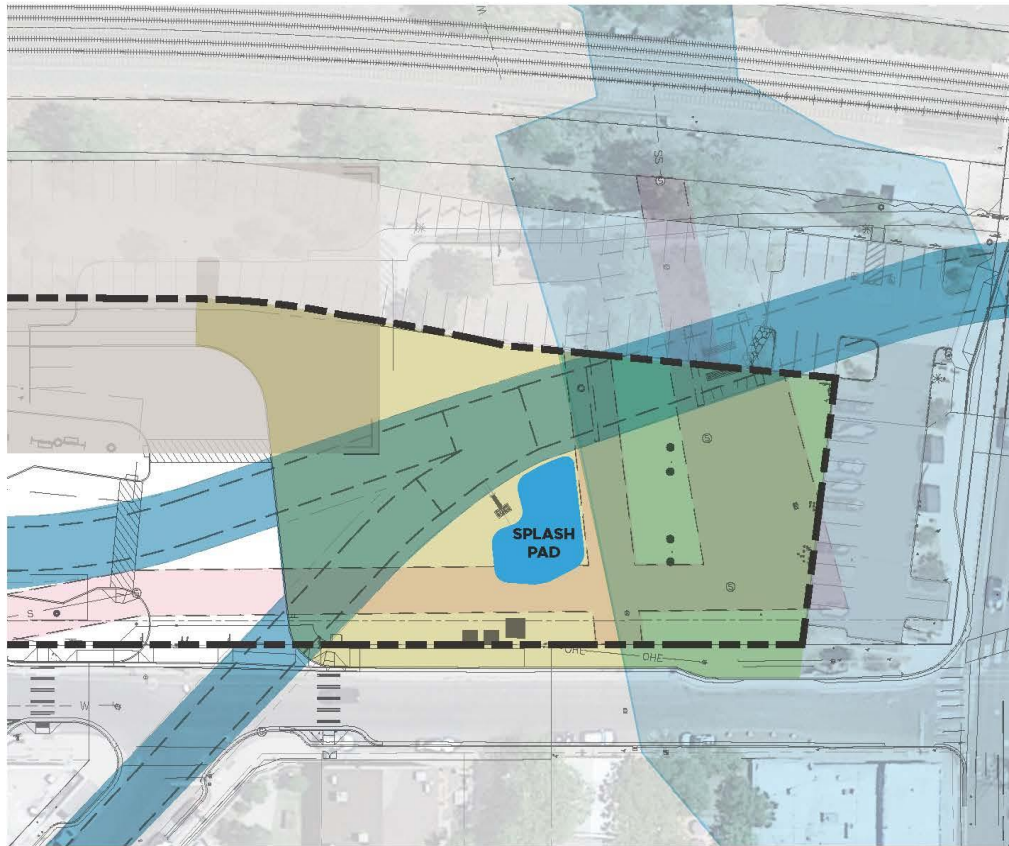
## PUBLIC ART

- + SOUTHSIDE GROVE BY HADDAD DRUGAN WILL RELOCATE FROM THE DOWNTOWN CONNECTION CENTER PHASE 1 TO THE CITY OF FLAGSTAFF CIVIC SPACE

IMAGE: SOUTHSIDE GROVE BY HADDAD DRUGAN



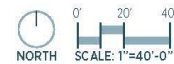
# Splash Pad



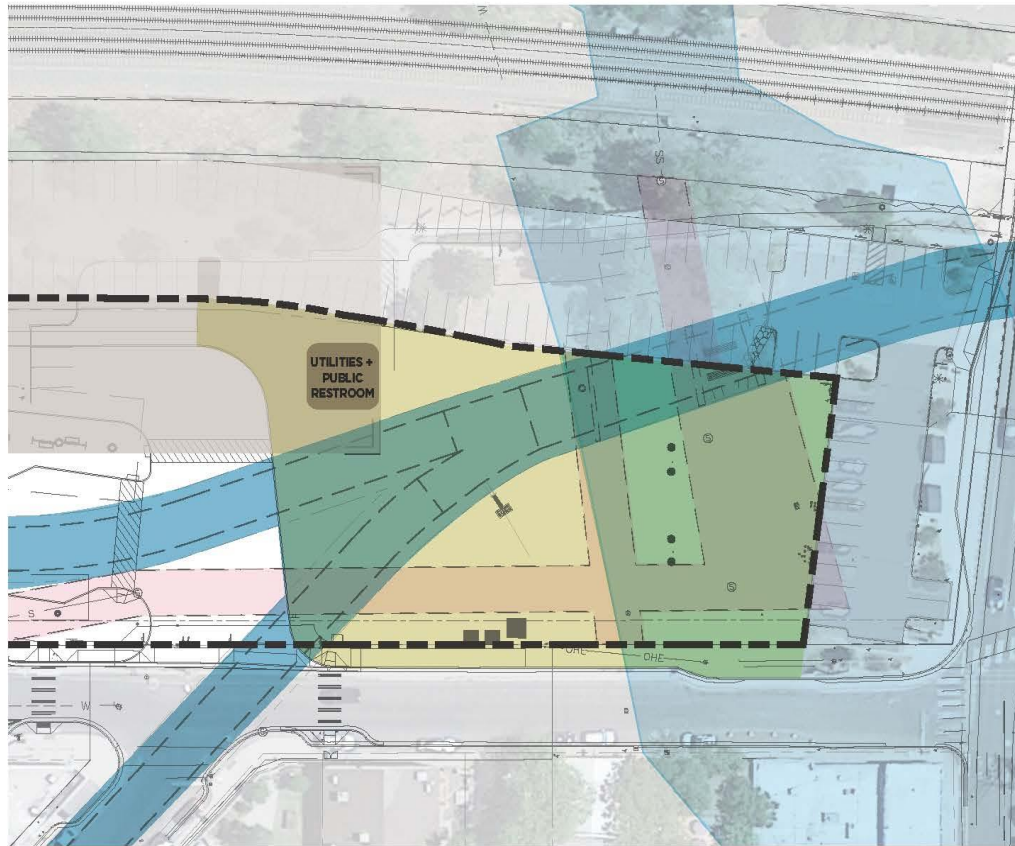
## INCLUSIVE SPLASH PAD

- + PROVIDE AN INCLUSIVE, UNIVERSALLY DESIGNED SPLASH PAD THAT ACTIVATES THE CIVIC SPACE WITH OR WITHOUT WATER
- + USE A RECIRCULATING SYSTEM FOR WATER CONSERVATION

PROJECT EXAMPLE: SPLASH PAD

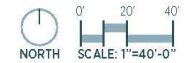


# Public Restroom/Mechanical

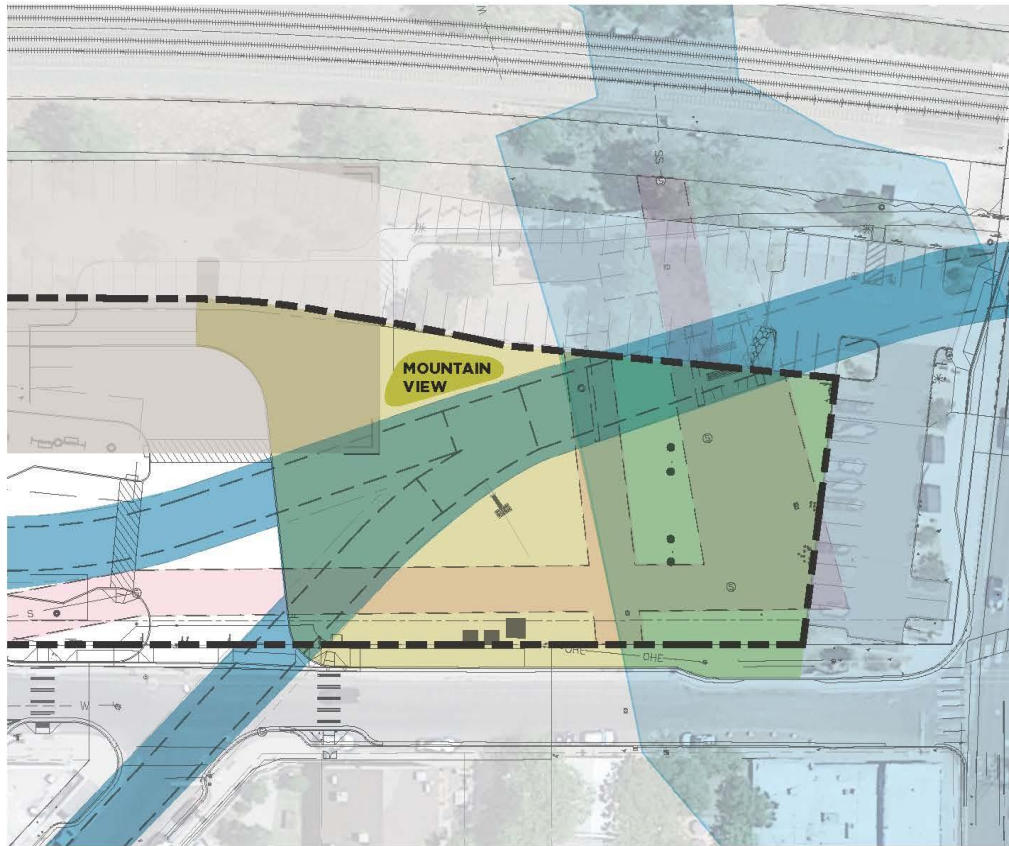


## MECHANICAL BUILDING + PUBLIC RESTROOM

- + MECHANICAL EQUIPMENT WILL BE REQUIRED FOR THE SPLASH PAD
- + THIS EQUIPMENT WOULD COMBINE WELL WITH A GENDER-NEUTRAL SINGLE RESTROOM
- + A PUBLIC RESTROOM WOULD MAKE THE SPACE MORE INCLUSIVE FOR PARK USERS

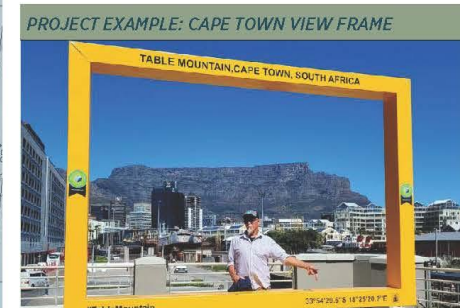


# Photography Viewpoint

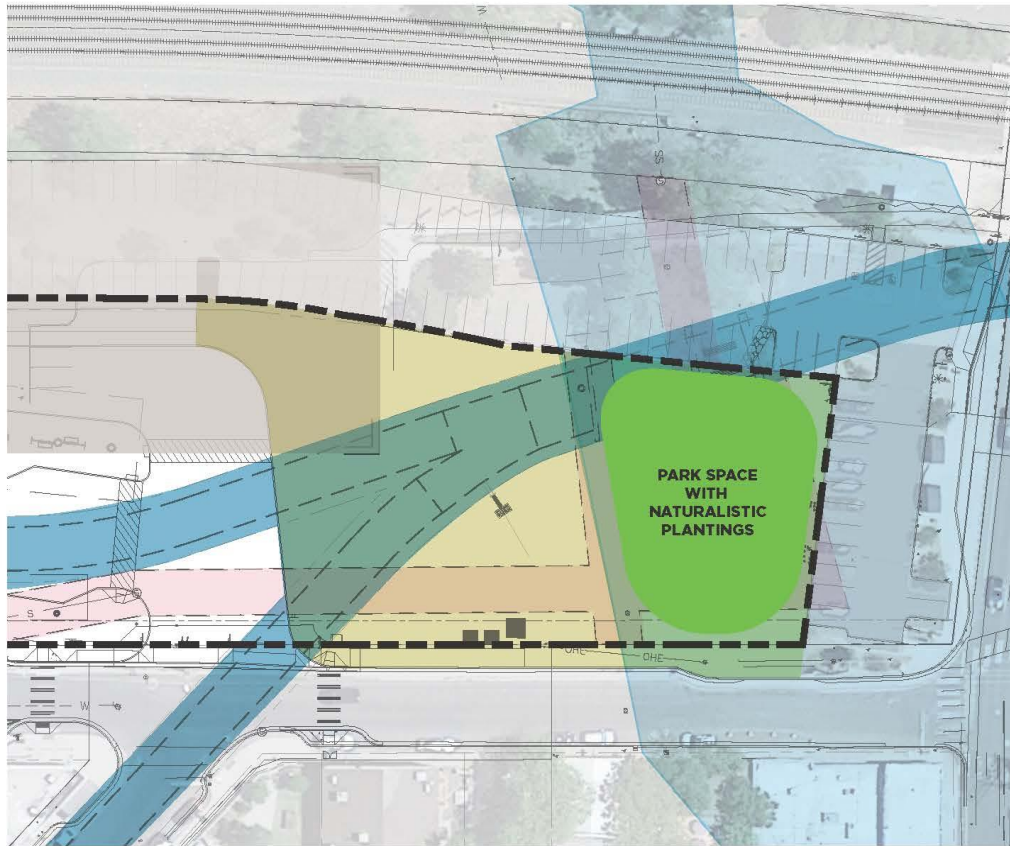


## CELEBRATE MOUNTAIN VIEW

- + HIGHLIGHT THE VIEWS OF THE PEAKS WITH A BUILT FEATURE
- + THIS AREA COULD DOUBLE AS A STAGE FOR GATHERINGS AND LARGER EVENTS



# Naturalized Park - Floodway

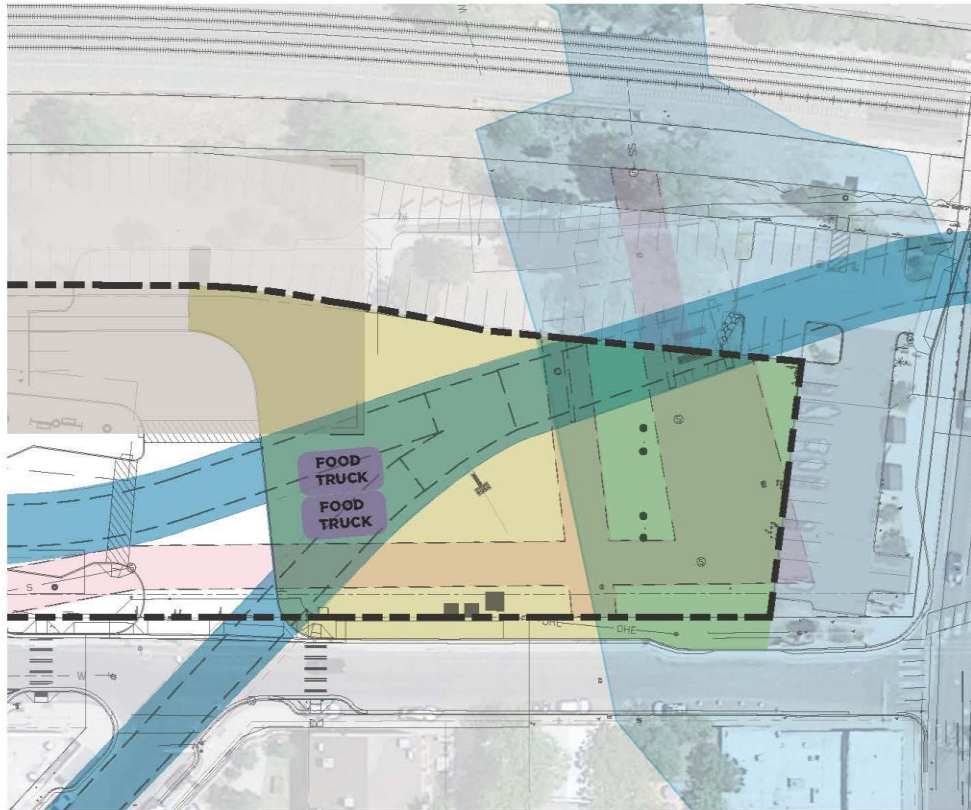


## ENHANCED PARK IN THE FLOODWAY

- + UPDATE AREA WITHIN THE FLOODWAY TO NATURALLY LANDSCAPED AND INCLUDE SERENE PARK FEATURES



# Food Trucks



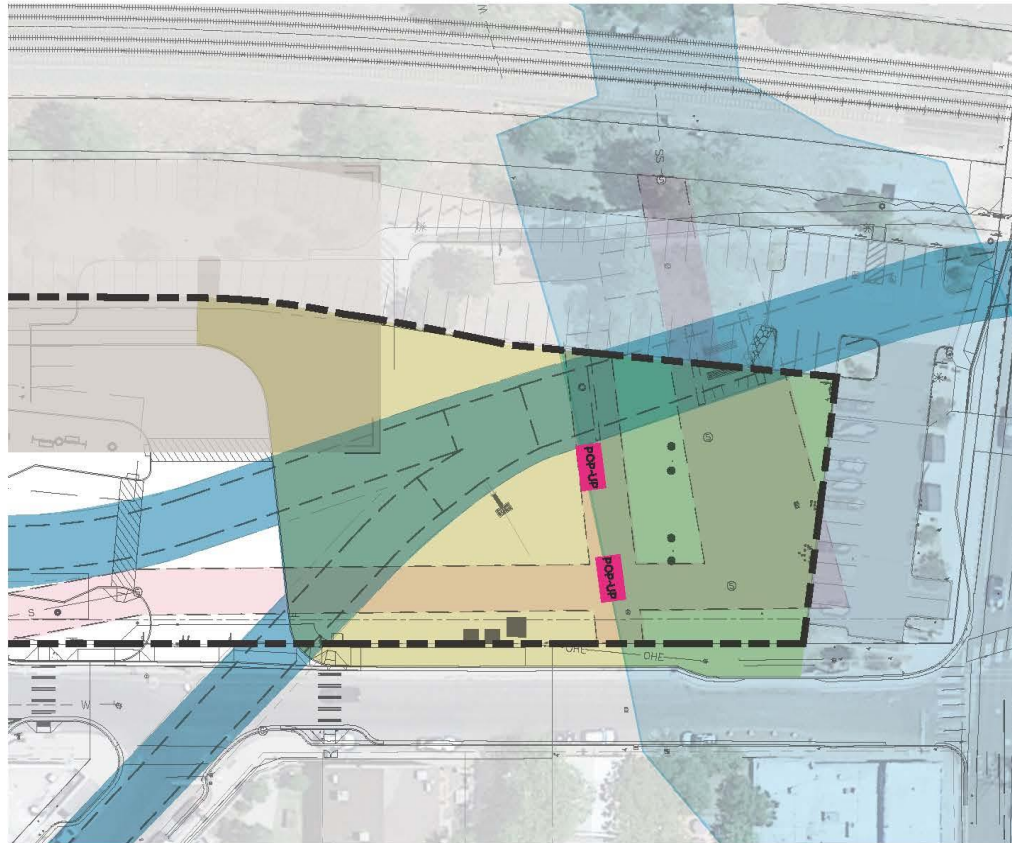
## FOOD TRUCKS / CONCESSIONS

- + FOOD TRUCK PARKING PROVIDES A FLEXIBLE PROGRAM ABOVE RESTRICTIVE EASEMENTS
- + THIS CAME FROM COMMUNITY INPUT AND WAS WELL RECEIVED INITIALLY BY NEIGHBORING BUSINESSES, BUT NEEDS TO BE VETTED FURTHER

PROJECT EXAMPLE: FOOD TRUCKS ON CITY STREET



# Pop-Up Stage



## POP-UP STAGE OR CONCESSION

- + INCLUDE SPACES FOR CONCERTS AND COMMUNITY EVENTS
- + SPACES COULD BE LOCKED WHEN NOT IN USE
- + CAN HAVE MURAL OR ARTISTIC ELEMENT SO THAT THE POP-UP STAGES ARE STILL VIBRANT WHETHER CLOSED OR IN USE



# Bubble Diagram – Q&A

QUESTIONS + COMMENTS

