

Wildcat Interceptor Upsizing

CMAR Construction Services
Agreement Phase 1 – GMP 1

July 1, 2025



Introduction

- Project Background
- Sewer Collection System Capacity
- Project Description
- Cost and Schedule





Project Background



- Meets priorities from Sewer Master Plan
- Replaces aging infrastructure
- Provides additional sewer collection system capacity





Sewer Collection System Capacity



**ENGINEERING REVIEW
CAPACITY ASSURANCE
SEWAGE COLLECTION SYSTEM**

1 PROJECT INFORMATION	
Project Name:	_____
Base Design Flow (AAC R18-9-E301 (D)(1)(a)):	_____ (MGD)
Maximum Sewage Flows (AAC R18-9-E301 (D)(1)(b)):	_____ (MGD)
2 DOWN STREAM SEWAGE COLLECTION SYSTEM CAPACITY	
Available Capacity:	_____ (MGD)
Total flow Approved Upstream From Point of Connection:	_____ (MGD)
<input checked="" type="checkbox"/> A map of the location used to calculate Available Capacity is attached.	

- State Code requires capacity tracking
- Sewer collection system is nearing capacity from continued development and population growth
- Upsizing necessary to prevent SSOs

Project Description

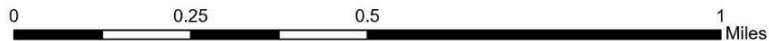
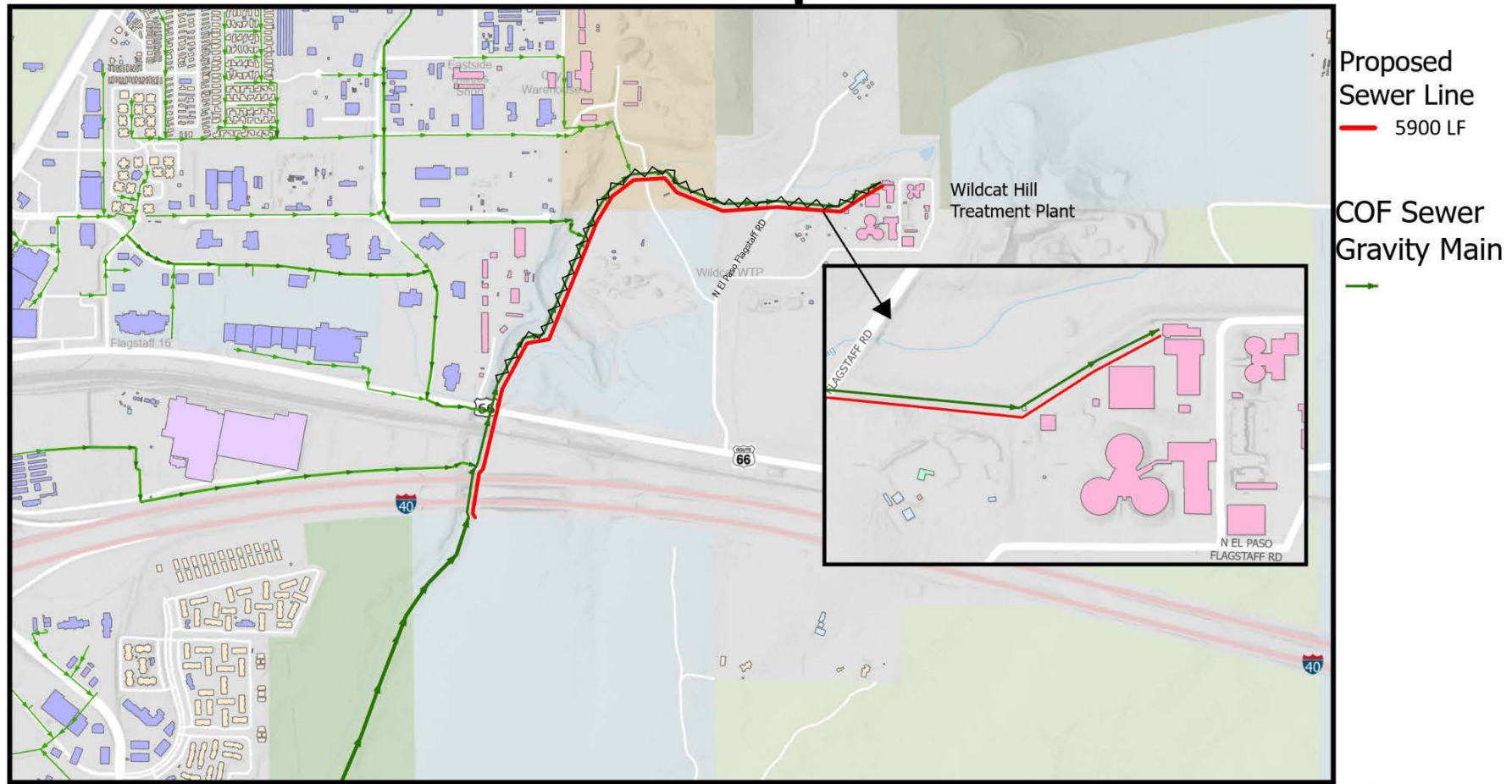
- Installs a new parallel 42" and standalone 48" sewer main
- Crosses BNSF and ADOT right of ways
- Requires sewer bypass pumping





Project Scope

Sewer Interceptor Line





Cost and Schedule

- Cost for Phase 1 - GMP 1 is \$5,374,180.00 for materials and set-up of a materials storage yard.
- Project is expected to go to construction this fall and be completed by end of 2026
- Additional GMPs are anticipated to cover the remaining scope and any additional costs identified in the 100% plans

Questions?

