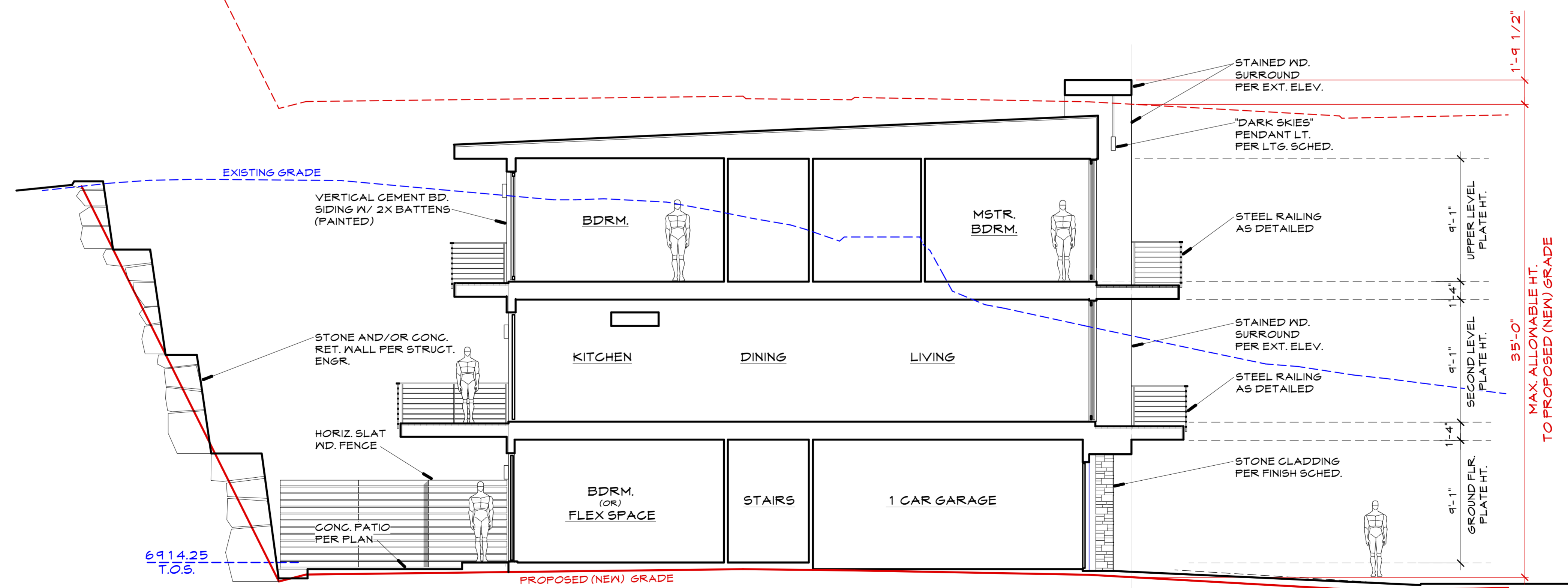


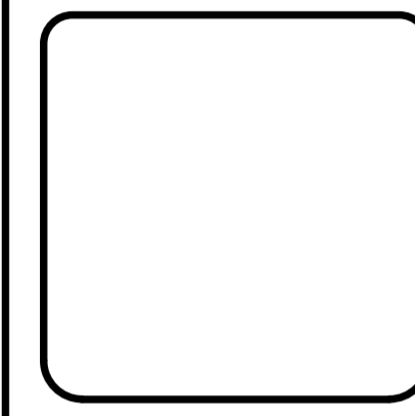
SECTION @ worst case location
"A" unit #1030



SECTION @ best case location
"A" unit #1940



REVISIONS	
REV	DESCRIPTION



ViewPoint Engineering
2121 E 6th STREET, SUITE 203
AUSTIN, TEXAS 78702
FIRM No. F-23395
viewpointengineering.com

SCALE: 3/16" = 1'-0"
DWN BY: M LIND
CHK BY:

PROJECT: PINEHAVEN RESIDENTIAL LAND DEVELOPMENT
2951 S. MASONIC LANE
COCONINO COUNTY, ARIZONA

APPLICANT: RODG DT FLAGSTAFF PROP CO LLC
2121 E. 6TH STREET, SUITE 203, AUSTIN, TEXAS 78702

TITLE: BUILDING SECTIONS
unit "A" (3 story townhome)

PROJECT NO.: 22004
DATE: MAY 30, 2023
SHEET ID: REV

A-1.2 0



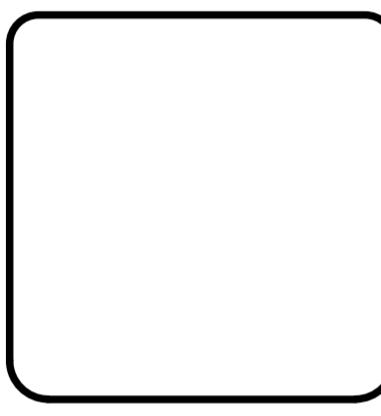
FRONT ELEVATION (typical)
unit "A"



LEFT SIDE ELEV. (@end condition)
unit "A"



REV	DATE	DESCRIPTION



ViewPoint Engineering
2121 E 6th STREET, SUITE 203
AUSTIN, TEXAS 78702
FIRM No. F-23395
viewpointengineering.com

SCALE: 3/16" = 1'-0"
DWN BY: M LIND
CHK BY:

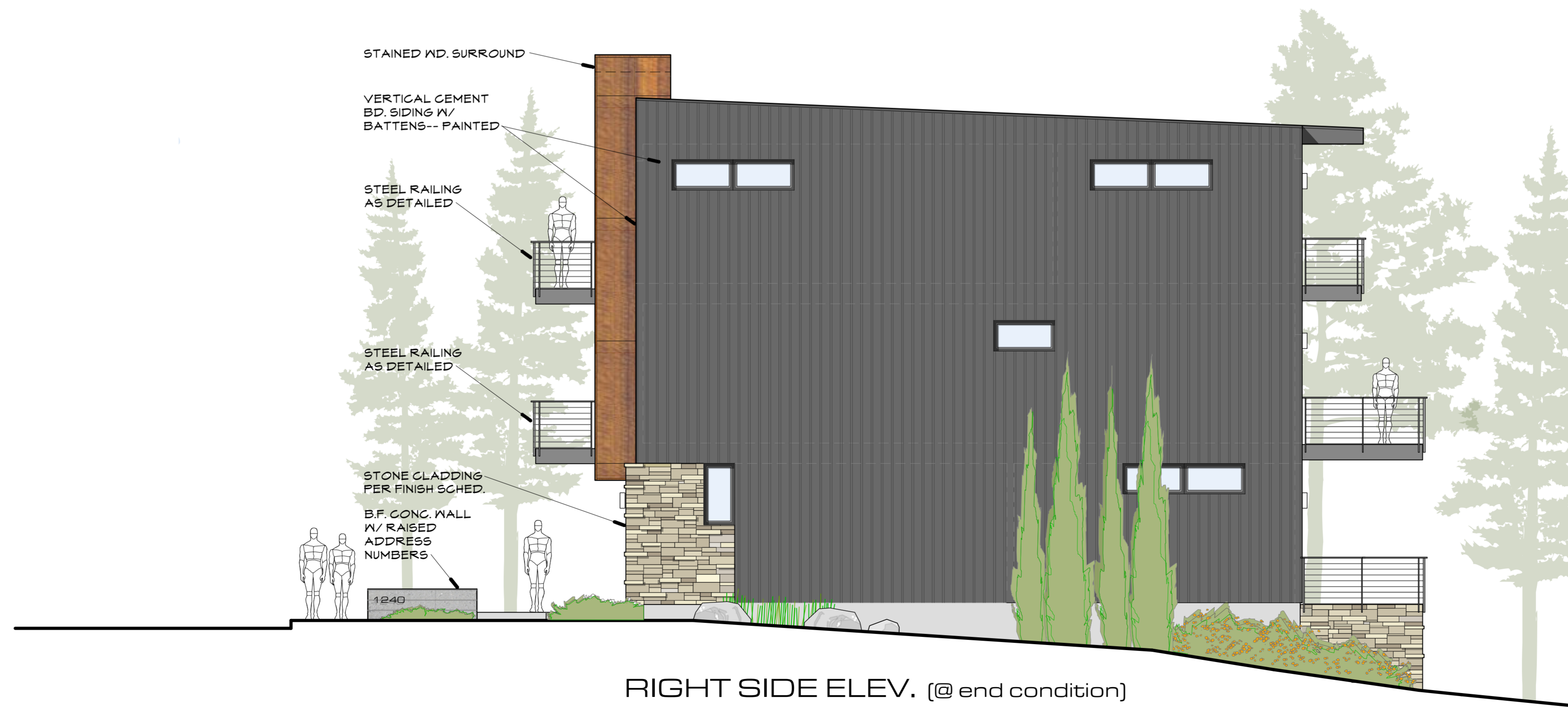
PROJECT: PINEHAVEN RESIDENTIAL LAND DEVELOPMENT
2951 S. MASONIC LANE
COCONINO COUNTY, ARIZONA
APPLICANT: RODG DT FLAGSTAFF PROP CO LLC
2121 E. 6TH STREET, SUITE 203, AUSTIN, TEXAS 78702
TITLE: EXTERIOR ELEVATIONS
unit "A" (3-story townhome)

PROJECT NO. 22004
DATE MAY 30, 2023
SHEET ID REV

A-1.3 0

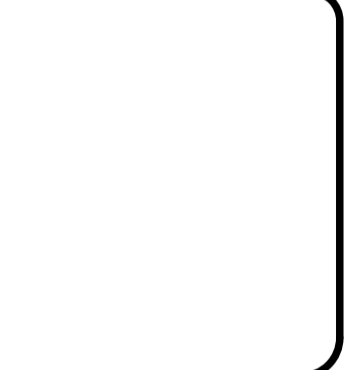


REAR ELEVATION (typical)
unit "A"



RIGHT SIDE ELEV. (@ end condition)
unit "A"

REV	DATE	DESCRIPTION	INT	NOT



ViewPoint Engineering
2121 E 6th STREET, SUITE 203
AUSTIN, TEXAS 78702

FIRM No. F-23395
viewpointengineering.com

SCALE: 3/16" = 1'-0"
DWN BY: M LIND
CHK BY:

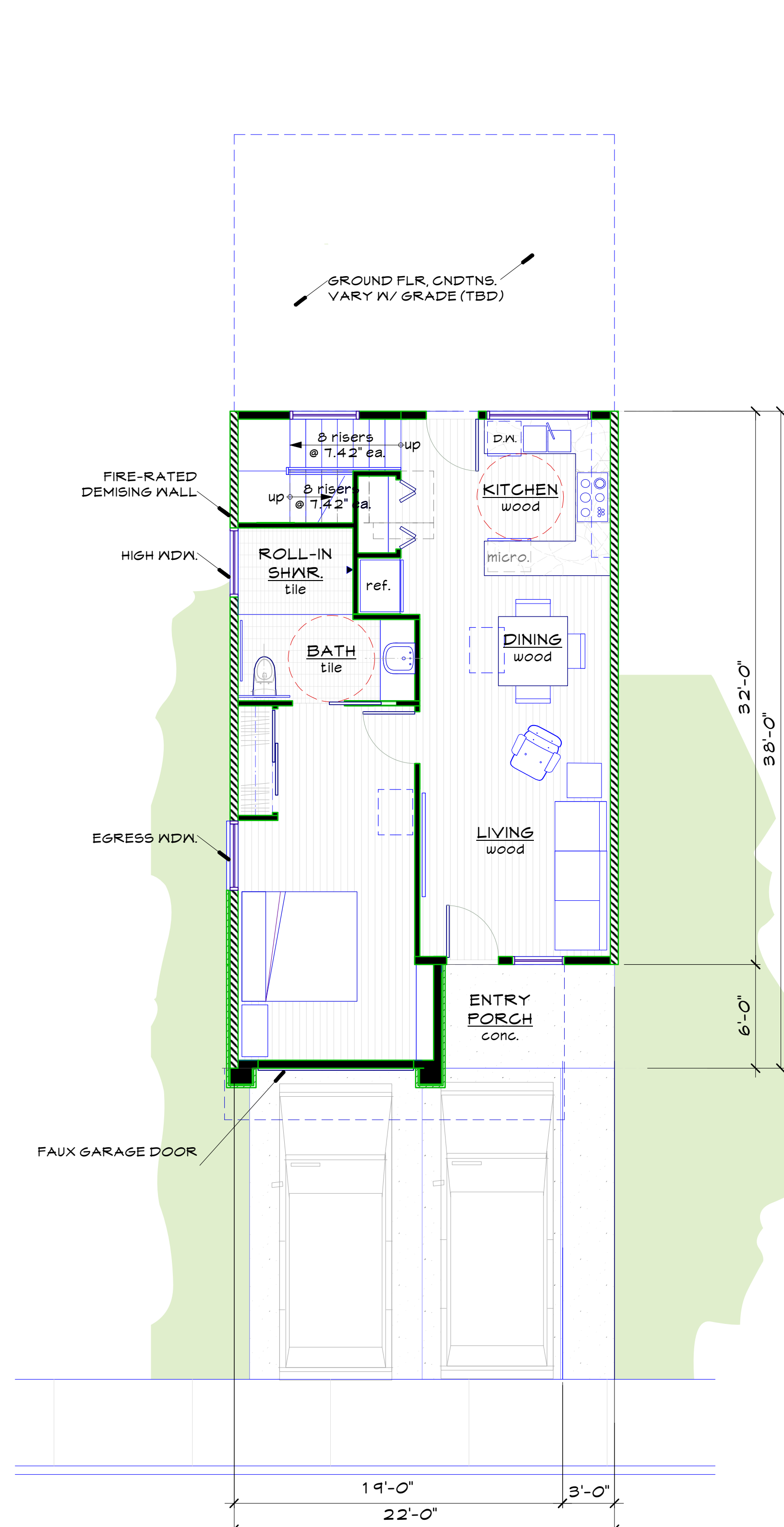
PROJECT: PINEHAVEN RESIDENTIAL LAND DEVELOPMENT
2951 S. MASONIC LANE
COCONINO COUNTY, ARIZONA

APPLICANT: RODG DT FLAGSTAFF PROP CO LLC
2121 E. 6TH STREET, SUITE 203, AUSTIN, TEXAS 78702

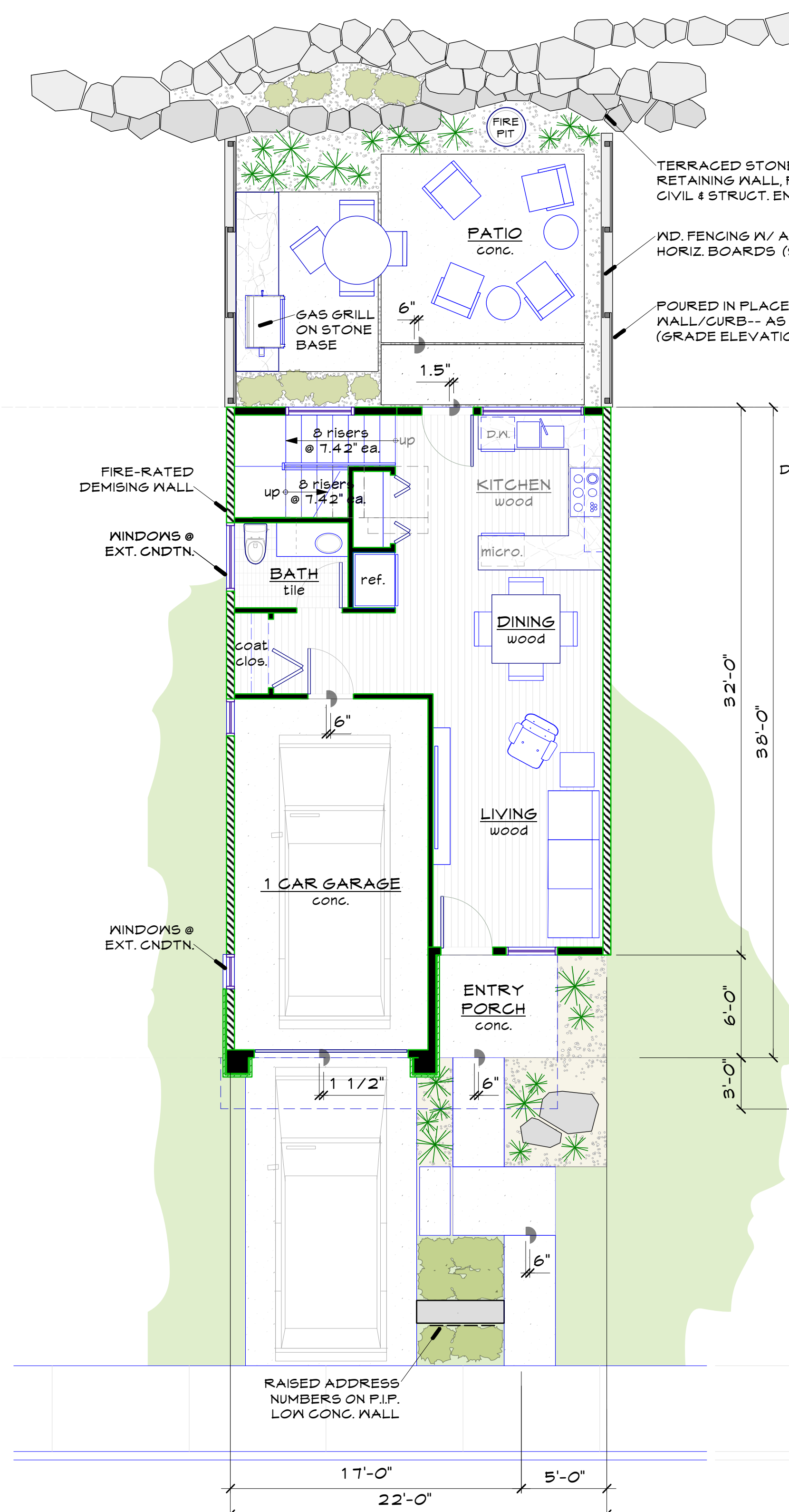
TITLE: EXTERIOR ELEVATIONS
unit "A" (3-story townhome)

PROJECT NO. 22004
DATE MAY 30, 2023

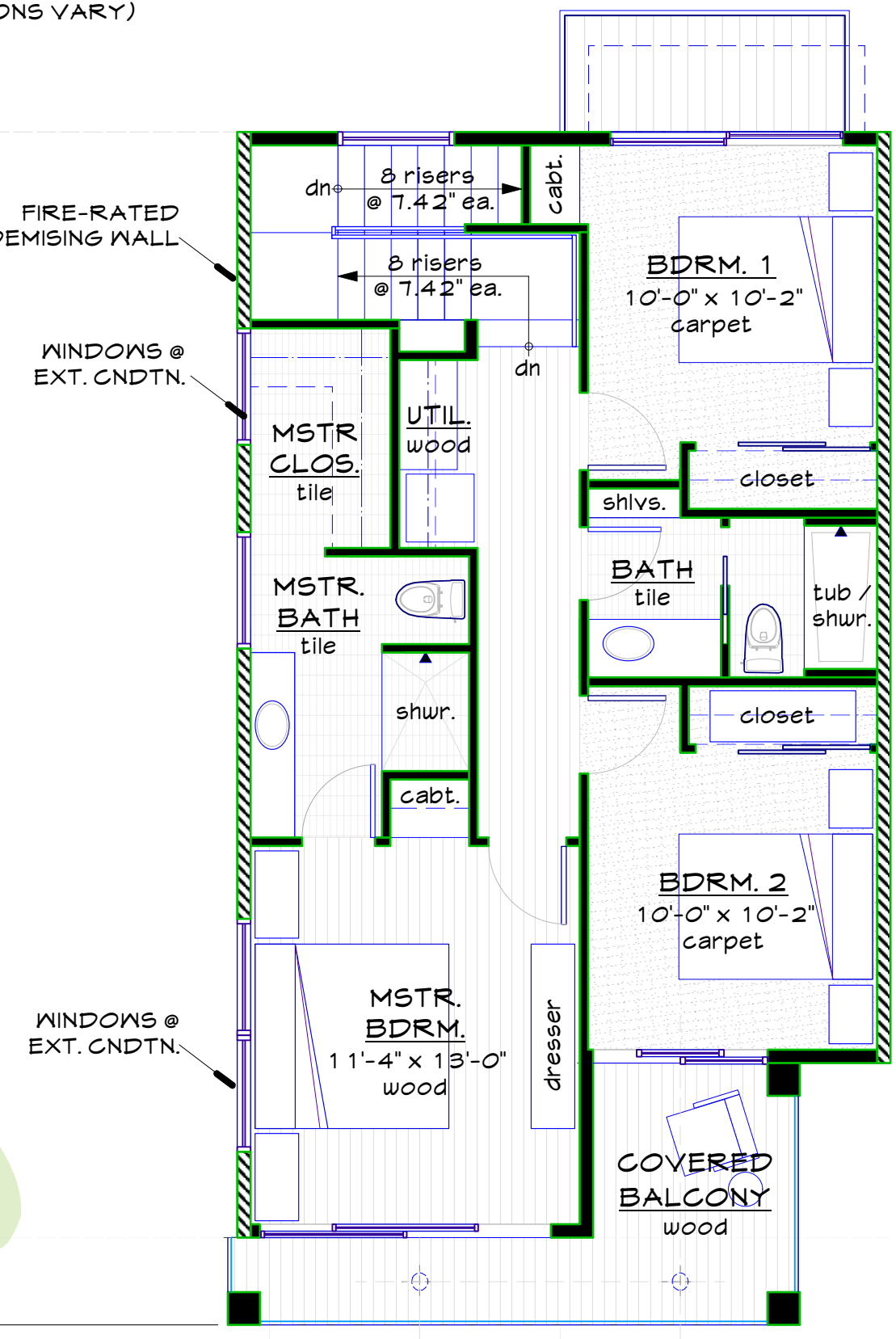
SHEET ID REV
A-1.4 0



ACCESSIBLE UNIT
 note: to provide an egress window in the ground floor bdrm., accessible units must be on an outside location.



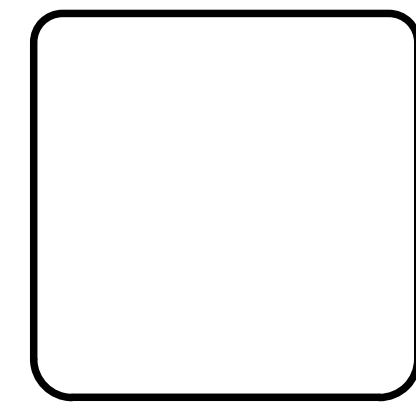
GROUND FLOOR
 unit #2610



SECOND FLOOR
 unit #2610



REV	DATE	DESCRIPTION	INIT	NOT



ViewPoint Engineering
 2121 E 6th STREET, SUITE 203
 AUSTIN, TEXAS 78702
 FIRM No. F-233395
 viewpointengineering.com

SCALE: 3/16" = 1'-0"
 DWN BY: M LIND
 CHK BY:

PROJECT: PINEHAVEN RESIDENTIAL LAND DEVELOPMENT
 2851 S. MASONIC LANE
 COCONINO COUNTY, ARIZONA
 APPLICANT: RODG DT FLAGSTAFF PROP CO. LLC
 2121 E. 6TH STREET, SUITE 203, AUSTIN, TEXAS 78702
 TITLE: FLOOR PLANS
 unit "B" (2 story/townhome)

PROJECT NO. 22004
 DATE: MAY 30, 2023
 SHEET ID: REV

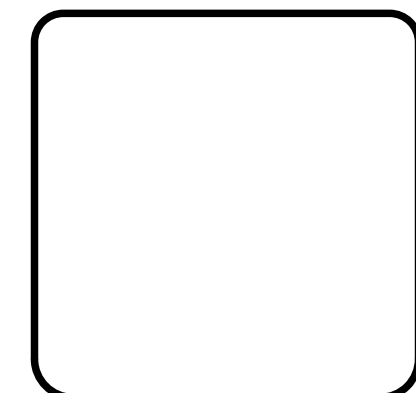
A-3.1 0



REAR ELEVATION (typical)
unit "B"



REVISIONS			
REV	DATE	DESCRIPTION	INT NOT



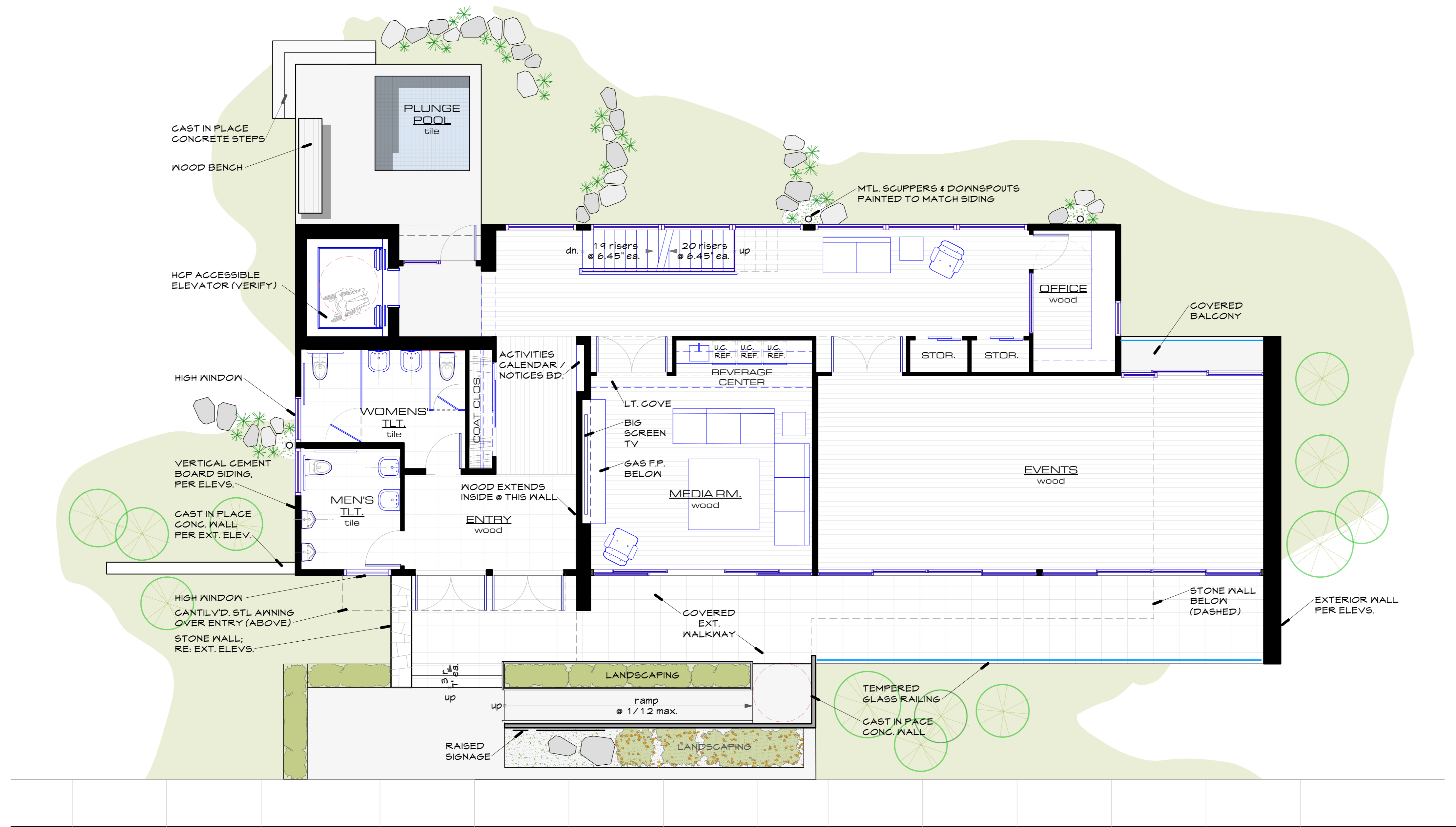
ViewPoint Engineering
2121 E 6th STREET, SUITE 203
AUSTIN, TEXAS 78702
viewpointengineering.com
FIRM No. F-23395

SCALE: 3/16" = 1'-0"
DWN BY: M LIND
CHK BY:

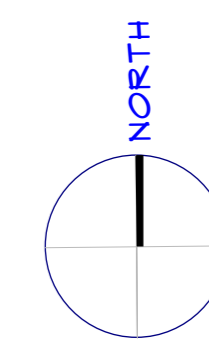
PROJECT	PINEHAVEN RESIDENTIAL LAND DEVELOPMENT 2851 S. MASONIC LANE COCONINO COUNTY, ARIZONA
APPLICANT	RODG DT FLAGSTAFF PROP CO LLC 2121 E. 6TH STREET, SUITE 203, AUSTIN, TEXAS 78702
TITLE	EXTERIOR ELEVATIONS unit "B" (2 story/townhome)

PROJECT NO.	22004
DATE	MAY 30, 2023
SHEET ID	REV

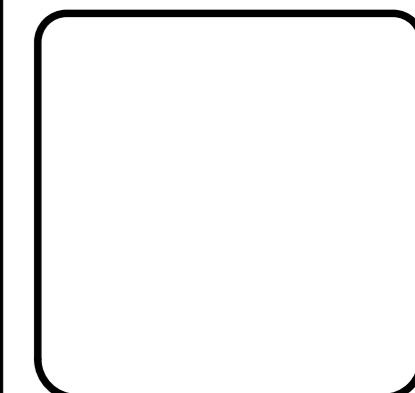
A-3.4 0



GROUND FLOOR PLAN
clubhouse



REV	DATE	DESCRIPTION	INT	MDT



ViewPoint Engineering
2121 E 6th STREET, SUITE 203
AUSTIN, TEXAS 78702

FIRM No. F-23395
viewpointengineering.com

SCALE: 3/16" = 1'-0"
DWN BY: M LIND
CHK BY:

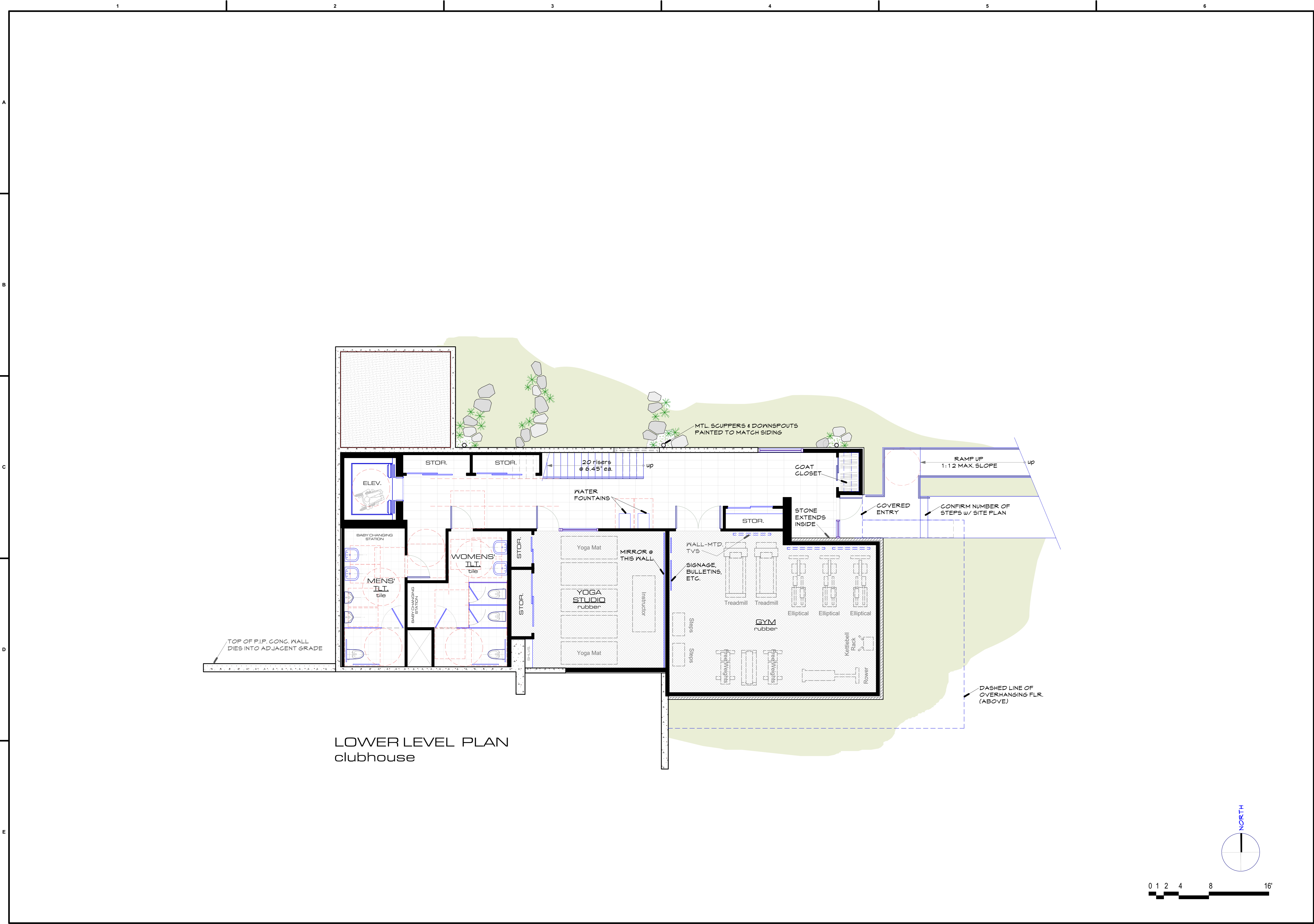
PROJECT: PINEHAVEN RESIDENTIAL LAND DEVELOPMENT
2951 S. MASONIC LANE
COCONINO COUNTY, ARIZONA

APPLICANT: RODG DT FLAGSTAFF PROP CO LLC
2121 E. 6TH STREET, SUITE 203, AUSTIN, TEXAS 78702

TITLE: GROUND FLOOR PLAN
community clubhouse

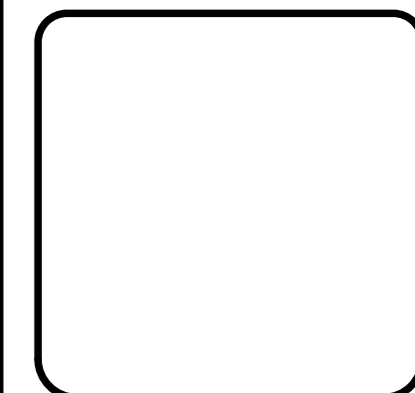
PROJECT NO.: 22004
DATE: MAY 30, 2023
SHEET ID: REV

A-4.1 0



REVISIONS

REV	DATE	DESCRIPTION	INT	MDT



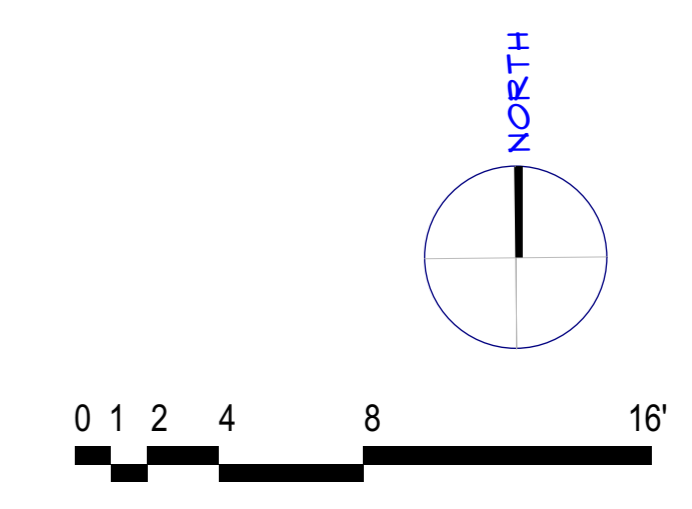
ViewPoint Engineering
 2121 E 6th STREET, SUITE 203
 AUSTIN, TEXAS 78702
 viewpointengineering.com
 FIRM No. F-23395

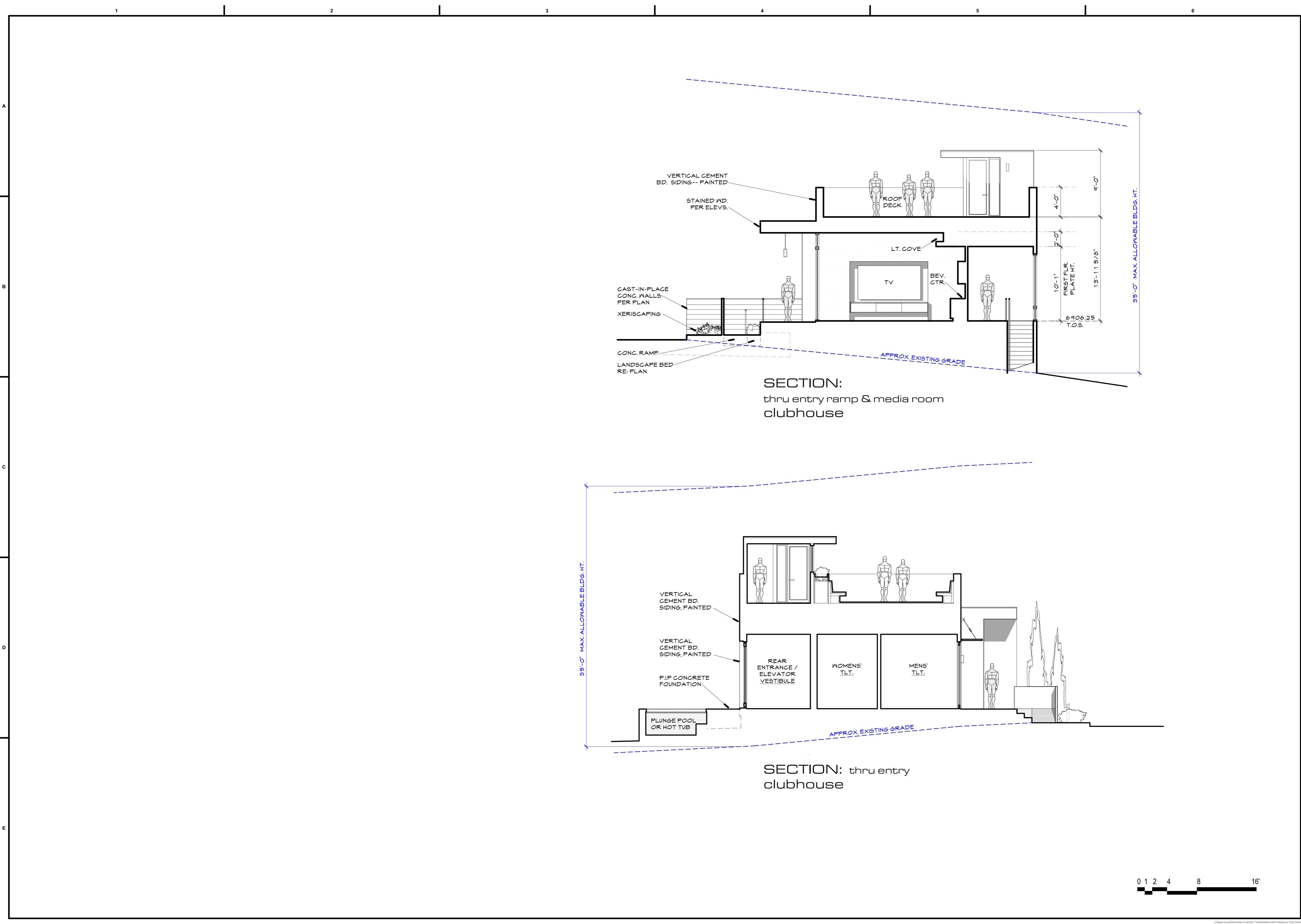
SCALE: 3/16" = 1'-0"
 DWN BY: M LIND
 CHK BY:

PROJECT	PINEHAVEN RESIDENTIAL LAND DEVELOPMENT
APPLICANT	RODG DT FLAGSTAFF PROP CO LLC
TITLE	LOWER FLOOR PLAN
community clubhouse	

PROJECT NO.	22004
DATE	MAY 30, 2023
SHEET ID	REV

A-4.2 0





VERTICAL CEMENT BD. SIDING-- PAINTED

STAINED WD. PER ELEVS.

ROOF DECK

LT. COVE

TV

BEV. CTR.

CAST-IN-PLACE CONG. WALLS PER PLAN

XERISCAPING

CONG. RAMP

LANDSCAPE BED RE: PLAN

APPROX. EXISTING GRADE

9'-0"

4'-0"

2'-0"

10'-1" FIRST FLR. PLATE HT.

13'-11 5/8"

6.906.25 T.O.S.

35'-0" MAX. ALLOWABLE BLDG. HT.

SECTION:
thru entry ramp & media room
clubhouse

VERTICAL CEMENT BD. SIDING, PAINTED

VERTICAL CEMENT BD. SIDING, PAINTED

F.I.P CONCRETE FOUNDATION

REAR ENTRANCE / ELEVATOR VESTIBULE

WOMENS' TLT.

MENS' TLT.

PLUNGE POOL OR HOT TUB

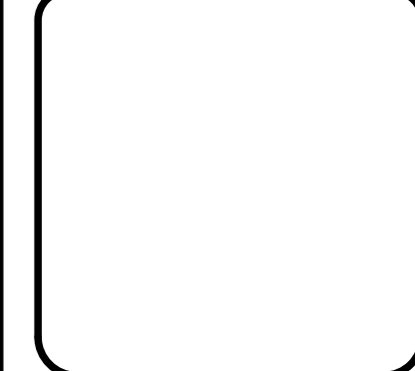
APPROX. EXISTING GRADE

35'-0" MAX. ALLOWABLE BLDG. HT.

SECTION: thru entry
clubhouse



REVISIONS	
REV	DESCRIPTION



ViewPoint Engineering
 2121 E 6th STREET, SUITE 203
 AUSTIN, TEXAS 78702
 FIRM No. F-23395
 viewpointengineering.com

SCALE: 3/16" = 1'-0"
 DWN BY: M LIND
 CHK BY:

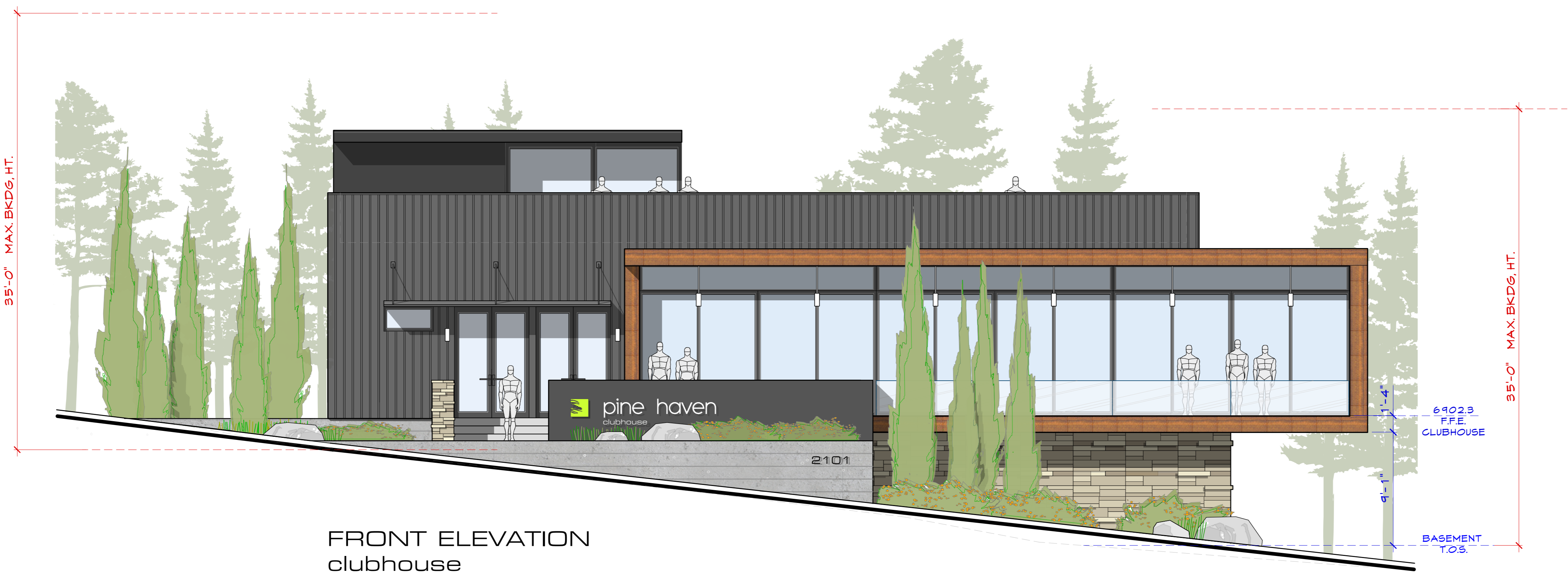
PROJECT	PINEHAVEN RESIDENTIAL LAND DEVELOPMENT
APPLICANT	RODGT FLAGSTAFF PROP CO LLC
TITLE	BUILDING SECTIONS
	community clubhouse

PROJECT NO. 22004
 DATE MAY 30, 2023
 SHEET ID REV

A-4.4 0

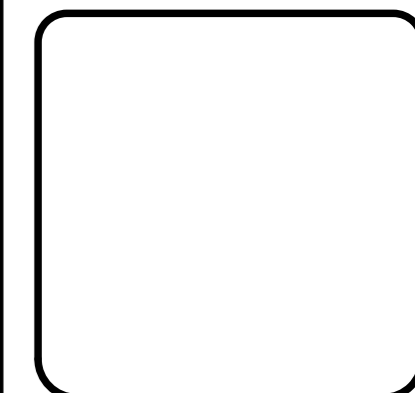


RIGHT ELEVATION
clubhouse



FRONT ELEVATION
clubhouse

REVISIONS	
REV	DESCRIPTION



ViewPoint Engineering
 2121 E 6th STREET, SUITE 203
 AUSTIN, TEXAS 78702
 viewpointengineering.com
 FIRM No. F-23395

SCALE: 3/16" = 1'-0"
 DWN BY: M LIND
 CHK BY:

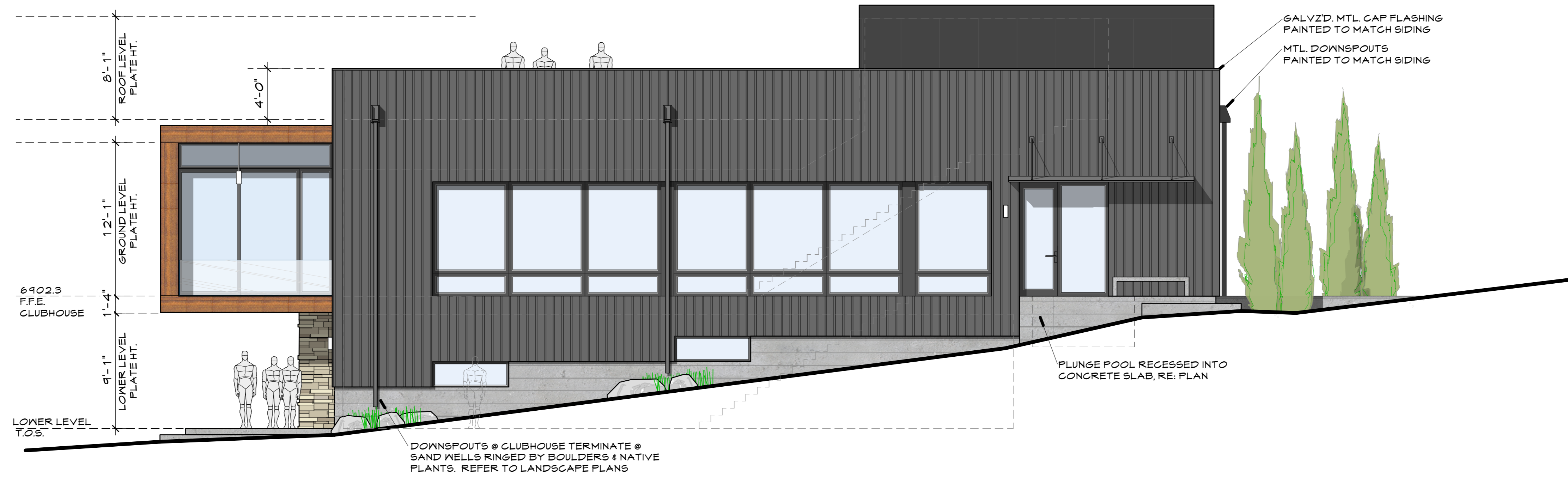
PROJECT	PINEHAVEN RESIDENTIAL LAND DEVELOPMENT
APPLICANT	RODG DT FLAGSTAFF PROP CO LLC
TITLE	EXTERIOR ELEVATIONS

PROJECT NO. 22004
 DATE MAY 30, 2023
 SHEET ID REV

A-4.5 0



LEFT ELEVATION
clubhouse



REAR ELEVATION
clubhouse



REVISIONS	
REV	DESCRIPTION

ViewPoint Engineering
 2121 E 6th STREET, SUITE 203
 AUSTIN, TEXAS 78702
 FIRM No. F-23395
 viewpointengineering.com

SCALE: 3/16" = 1'-0"
 DWN BY: M LIND
 CHK BY:

PROJECT	PINEHAVEN RESIDENTIAL LAND DEVELOPMENT
APPLICANT	RODG DT FLAGSTAFF PROP CO LLC
TITLE	EXTERIOR ELEVATIONS
PROJECT NO.	22004
DATE	MAY 30, 2023
SHEET ID	REV

A-4.6 0

EXTERIOR PAINT COLORS

SIDING, FASCIA, SOFFITS:
painted Kelly Moore "Hazel's Coat"
(KM3928-5)



RGB: 85 79 71 HEX: #554F47
LRV: 8.03%

RAILINGS:
painted Kelly Moore "Portland Whitbed"
(KM3922-2)

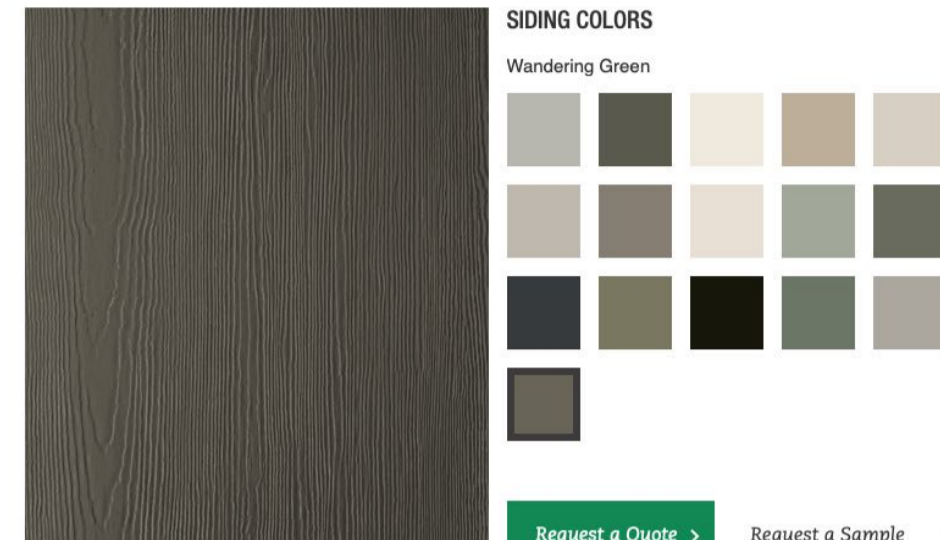


RGB: 213 209 202 HEX: #D5D1CA
LRV: 63.99%

SIDING cement board "hardie" siding: (vertical panels= textured / battens & trim=smooth)

Magnolia Home | James Hardie Collection

Tell the story of your home with beautiful colors, styles and textures you love- all curated by Joanna Gaines. This collection was inspired by earthy and neutral tones and created to help simplify the process of re-siding your home, so you can design with confidence. All products come with ColorPlus® Technology finishes for added beauty with lower maintenance.



Colors shown may vary due to screen resolution. Please see actual product sample for true color.

WOOD PANELLING (thermally modified wood)

Delta MILLWORKS

PRODUCTS FEATURED PORTFOLIO COLLECTIONS ABOUT

FINISH: NOT CHARRED | DELTA PREFINISHED™

AVAILABLE PROFILES: SHIP LAP | TONGUE & GROOVE | SET

APPLICATION: EXTERIOR | INTERIOR

PRODUCT SPECS
Mojave Thermal Douglas Fir VG | Smooth | Weathered Taupe

STANDARD SIZES: 1x6

LENGTHS: 7'-28", odd 6 even lengths

GRADE: C&BTR VG

FLAME SPREAD: Class 1

SPECIES GUIDE: Mojave Thermal Douglas Fir VG Species Guide

STONE



LEGENDS ARCHITECTURAL STONE

OUR PRODUCTS BROCHURES GALLERIES TESTIMONIALS ABOUT US LOCATION CONTACT US MY WISHLIST

HUDSON LEDGESTONE

ADD TO WISHLIST

Our building stones are available in all colors, shapes, and sizes and offer unlimited design possibilities. Common applications for building stone include everything from exterior and interior veneers to fireplaces and garden walls.

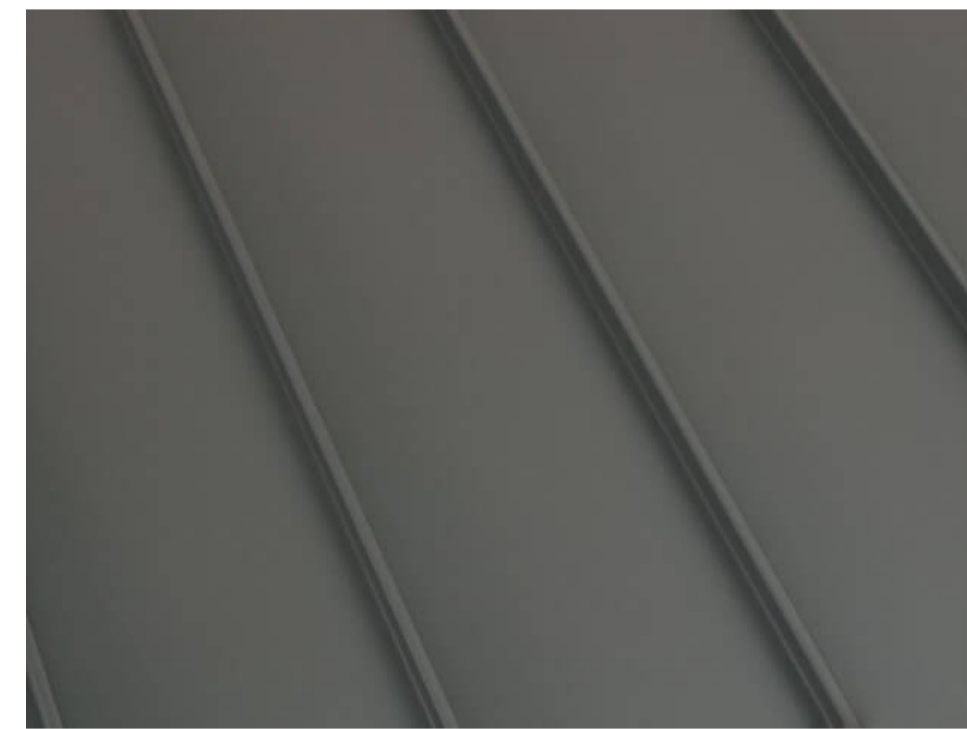
Ledgestone is commonly used for both interior and exterior applications. It is ideal for interior walls, fireplaces and exterior garden walls, part of ledgestone's inherent beauty outdoors is in the manner in which ambient light accentuates its texture and rich earth tone colors. It is available in random lengths and it ranges in heights from 2" to 8".

***NOTE: This selection is ONLY available in a "Thin Veneer"**

Dimension Ledgestone Corner Installation Guide by NSVI

- Height: 1" - 5"
- Length: 4" - 14"
- Depth: 3/4" to 1-1/4"
- Colors: Buff, Gray - Grey, Silver
- Flats: 5 sf Bag, 10 sf Box, 90/150/180 sf Crate
- Corners: 5 sf Bag, 10 sf Box, 90/100 sf Crate

ROOFING (standing seam, mtl, w/ knar finish)



BERRIDGE MANUFACTURING COMPANY

(800) 669-0009
www.Berridge.com

Standard Colors

Shasta White	Parchment	Almond	Sierra Tan	Buckskin
Medium Bronze	Aged Bronze	Copper Brown	Dark Bronze	Terra-Cotta
Deep Red	Colonial Red	Burgundy	Bristol Blue	Royal Blue
Patina Green	Hemlock Green	Teal Green	Forest Green	Evergreen
Harford Green	Cityscape	Zinc Grey	Charcoal Grey	Matte Black

Chart of SRI Values

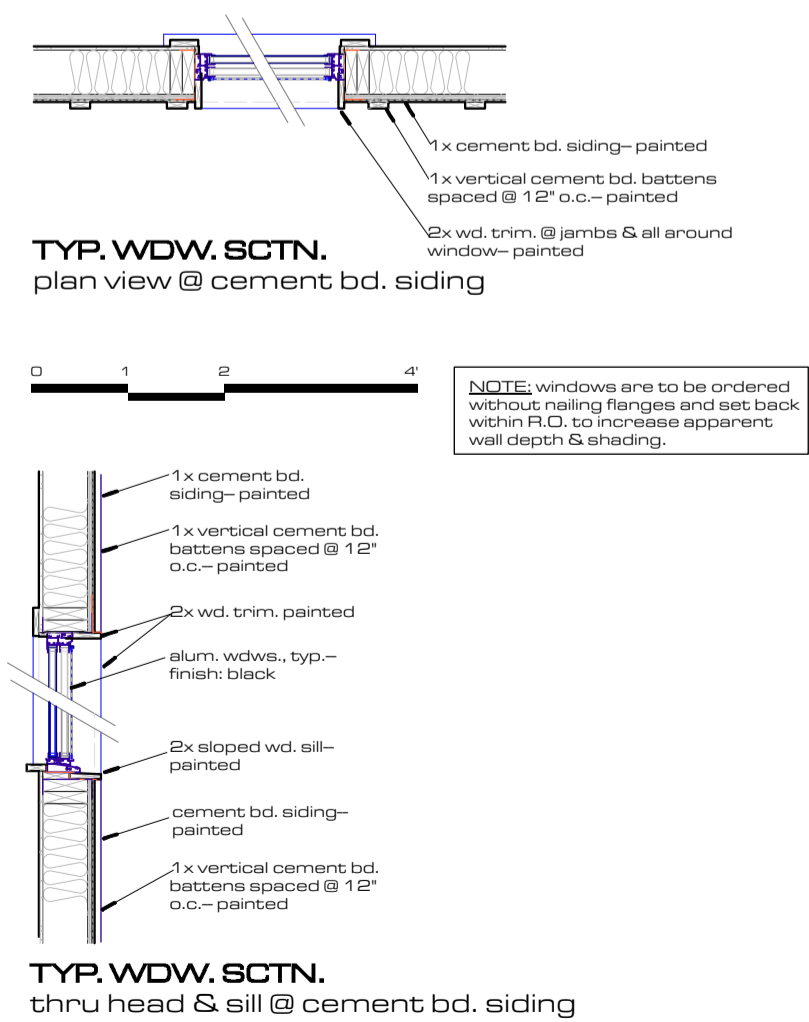
Berridge Colors	Solar Reflectance	Emissivity	SRI
Aged Bronze	.31	.85	31
Almond	.65	.86	77
Bristol Blue	.33	.85	33
Buckskin	.43	.83	46
Burgundy	.32	.84	32
Charcoal Grey	.29	.84	28
Cityscape	.48	.85	54
Colonial Red	.35	.83	35
Copper Brown	.32	.85	32
Dark Bronze	.28	.85	27
Deep Red	.41	.84	44
Evergreen	.30	.83	29

WINDOWS (material: aluminum, color: black)

Classic Line

Western Window Systems' Classic Line of aluminum moving glass walls and windows combines exceptional capability with ease of use and versatility. With a narrow profile, stainless-steel rolling hardware, and standard or thermally broken aluminum for energy performance, no wonder it's been the choice of builders for over two decades.

Architectural Details How They're Made



RETAINING WALLS (board-form concrete, natural finish)



DECKS (Trex composite, color: "Clamshell") Clam Shell

Clam Shell is an easy-to-match shade of medium grey, featuring a low-maintenance, wood-like grain pattern.
[Read More](#)

12 Inch Composite Deck Board Sample \$5.00

Order a Sample

Naturals

Basics



REV	DATE	DESCRIPTION	REVISIONS	
			INT	NOT

ViewPoint Engineering

2121 E 6th STREET, SUITE 203
AUSTIN, TEXAS 78702

FIRM No. F-23395
viewpointengineering.com

SCALE: **N.A.**

DWN BY: **M LIND**

CHK BY:

PROJECT: **PINEHAVEN RESIDENTIAL LAND DEVELOPMENT**

2951 S. MASONIC LANE
COCONINO COUNTY, ARIZONA

APPLICANT: **RODG DT FLAGSTAFF PROP CO LLC**

2121 E. 6TH STREET, SUITE 203, AUSTIN, TEXAS 78702

TITLE: **MATERIAL SELECTIONS & EXT. FINISHES**

pine haven project

PROJECT NO. **22004**

DATE **MAY 30, 2023**

SHEET ID **A-5.0** REV **0**