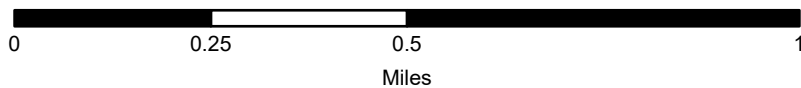


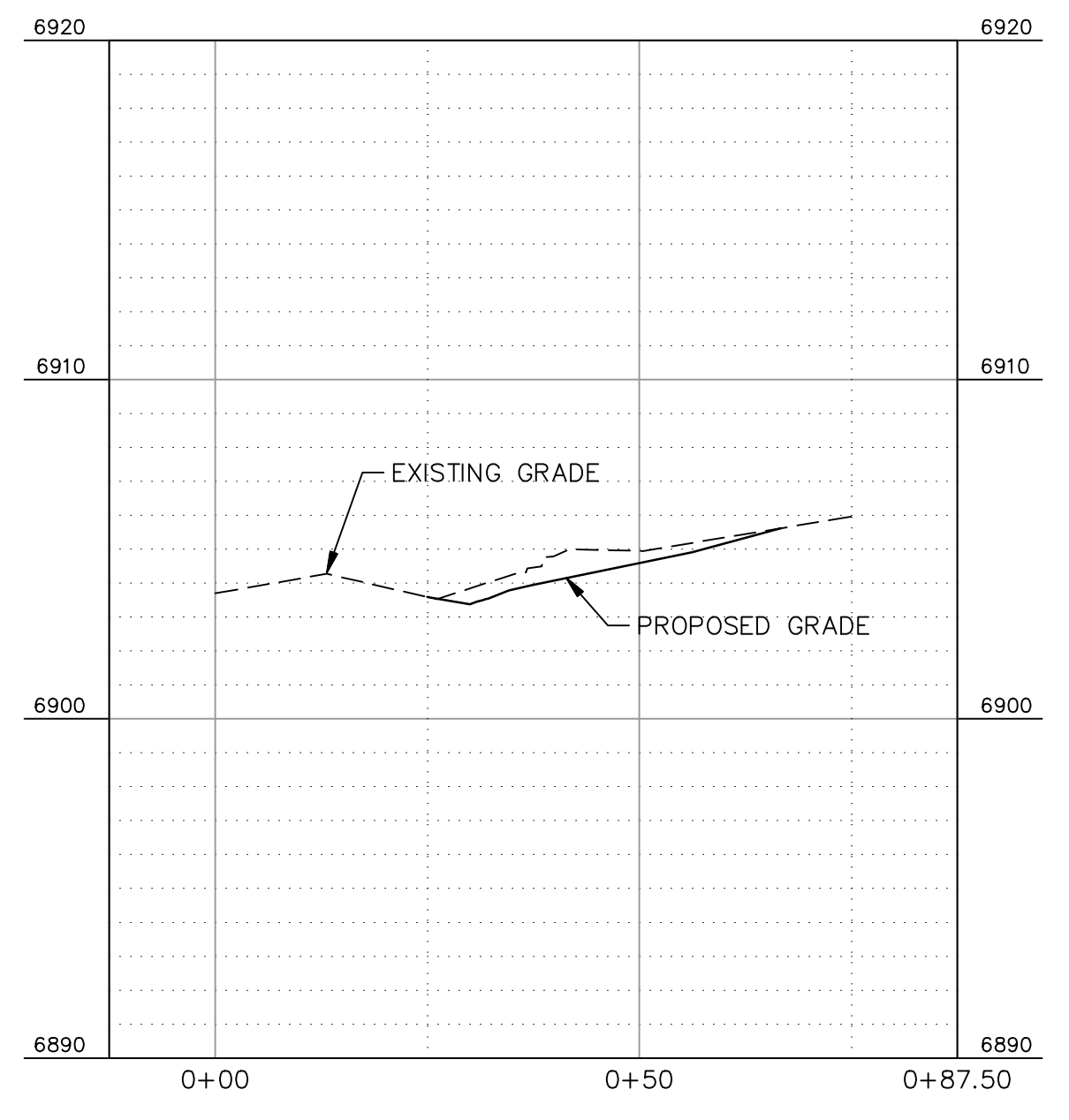
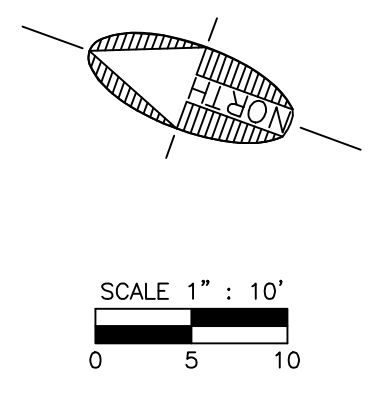
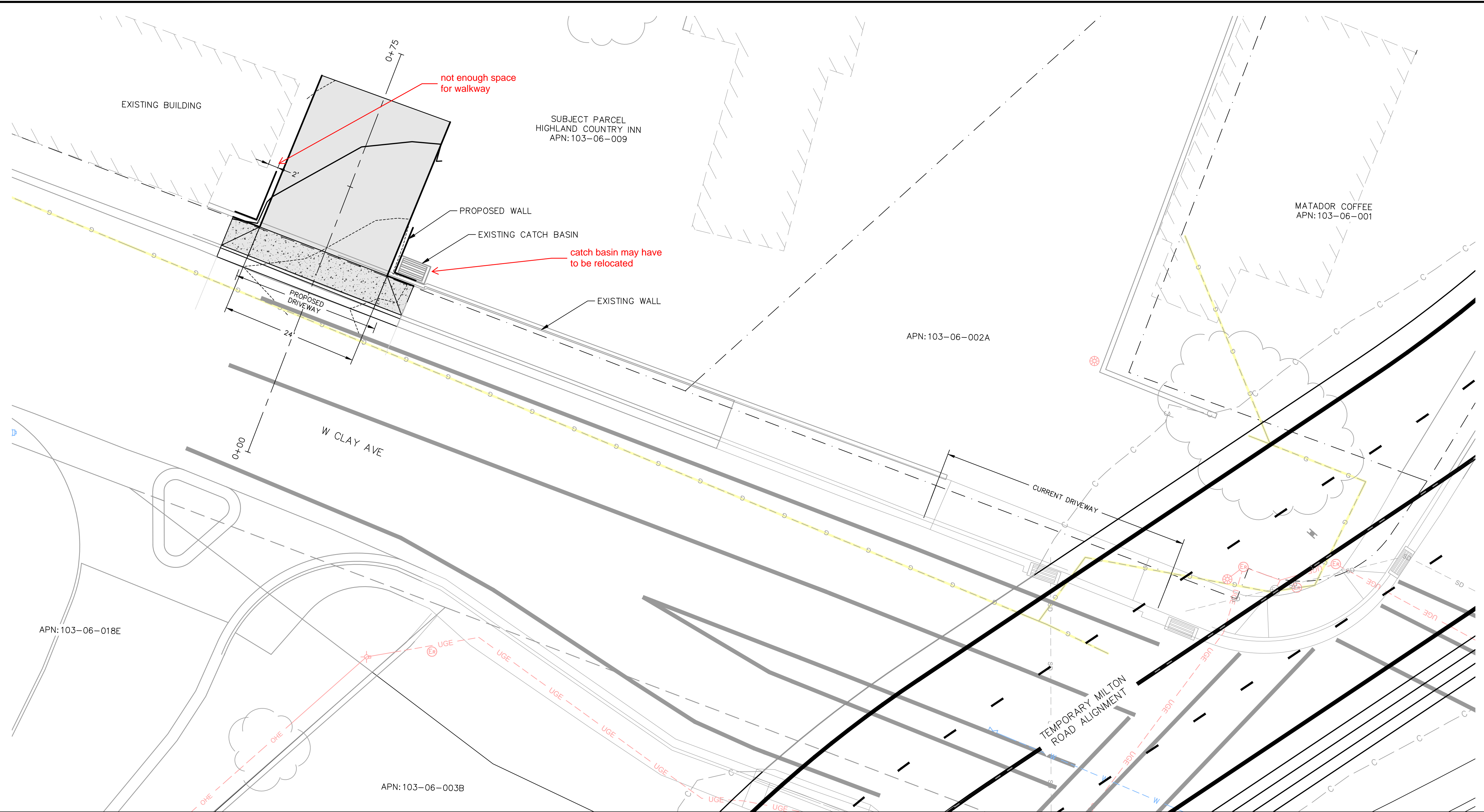
Rio de Flag Project Properties



- Properties acquired by the City of Flagstaff
- Properties in the process of being acquired
- Properties yet to be acquired
- BNSF Properties



City of Flagstaff maps and data are updated on a regular basis from data obtained from various sources. The City of Flagstaff endeavors to provide accurate information, but accuracy is not guaranteed. You are strongly encouraged to obtain any information you need for a business or legal transaction from a surveyor, engineer, title company, or other licensed professional as appropriate. Information is provided subject to the express condition that you knowingly waive any and all claims for damages against the City of Flagstaff relating to use of this information.



DRIVEWAY CROSS SECTION
H: 1" = 20' V: 1" = 5'

PRELIMINARY
NOT FOR CONSTRUCTION,
BIDDING OR RECORDING

JOB NO: 04473		DATE: DEC 24		SCALE: AS SHOWN		DRAWN: HAS		DESIGN: HAS		CHECKED: SCI	
110 W. Dole Avenue Flagstaff, AZ 86001 928.774.8934 928.774.8934 fax www.ardurra.com		RIO DE FLAG		FLAGSTAFF ARIZONA		APN: 103-06-018E		APN: 103-06-003B		APN: 103-06-002A	
 Shephard Wesnitzen Inc. An ARDURRA Company		REVISIONS		DATE		BY		NO.		DESCRIPTION	
Contact Arizona 811 at least two full working days before you begin excavation. Call 811 or click: Arizona811.com		DRAWING NO.		EX01		SHT NO.		1		OF 1	

EXHIBIT - HOTEL ALTERNATE ACCESS
24 FT DRIVEWAY

