



Quiet Zone Updates

January 7, 2025



Quiet Zone Updates

What we will cover
today

- What are Quiet Zones?
- Where is the Quiet Zone?
- Quiet Zone status
- Accident Updates
 - Enforcement Activities
- Federal Railroad Administration
- Safety Improvements
 - Planned Capital Projects
 - Interim Capital Improvements
 - Outreach and Education
- Next Steps



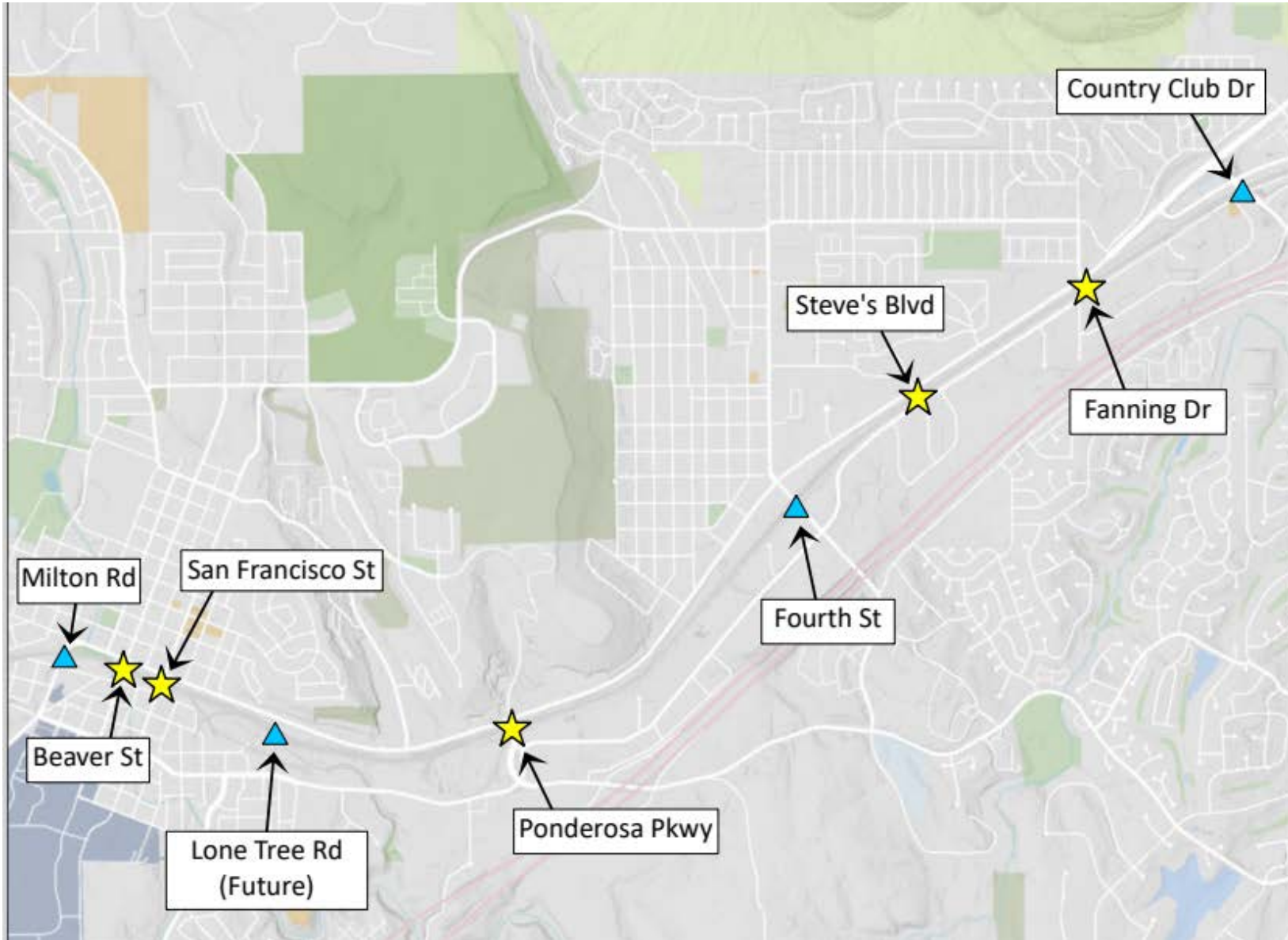


What are Quiet Zones?

- ½ mile or longer section of rail where requirements have been met to satisfy the Federal Railroad Administration's (FRA) rule for Quiet Zone (QZ) establishment
- Flagstaff led the QZ establishment effort in 2010
 - Seeking approval and coordination with BNSF, Arizona Corporation Commission and the FRA
- A section of rail where locomotive horns are not *routinely* sounded when trains approach crossings
 - Horns may be sounded in emergency situations or to comply with other railroad or FRA rules
- City 'affirms' to the FRA that all devices and conditions continue to be met on a regular basis



Where is the Quiet Zone?



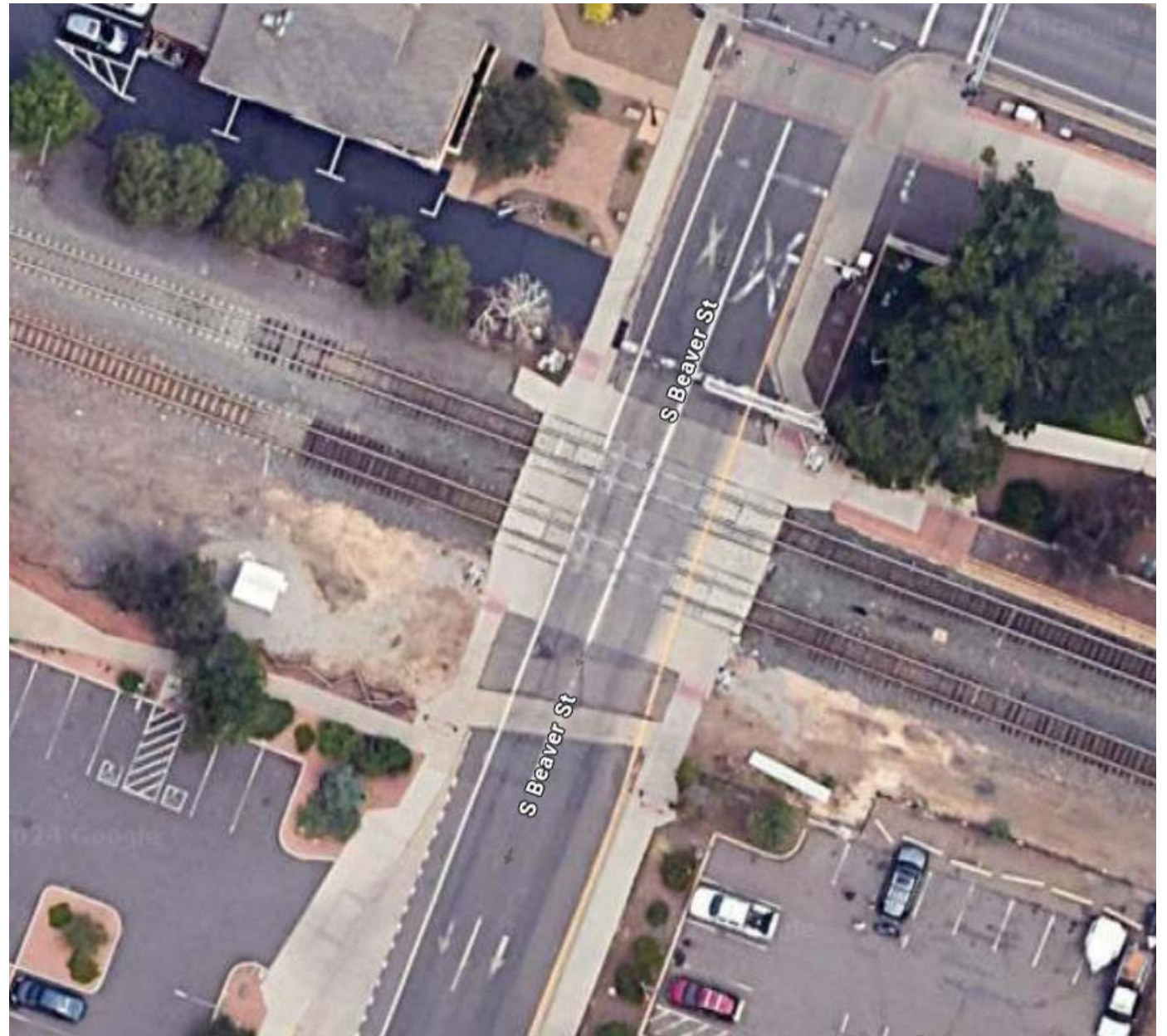
**City of Flagstaff
Railroad Crossings**

- ★ At-Grade Railroad Crossings
 - ▲ Grade-Separated Railroad Crossings
- 0 0.5 1
Miles

Where is the Quiet Zone?

Beaver Street Crossing
Supplemental Safety
Measure

- One Way Street

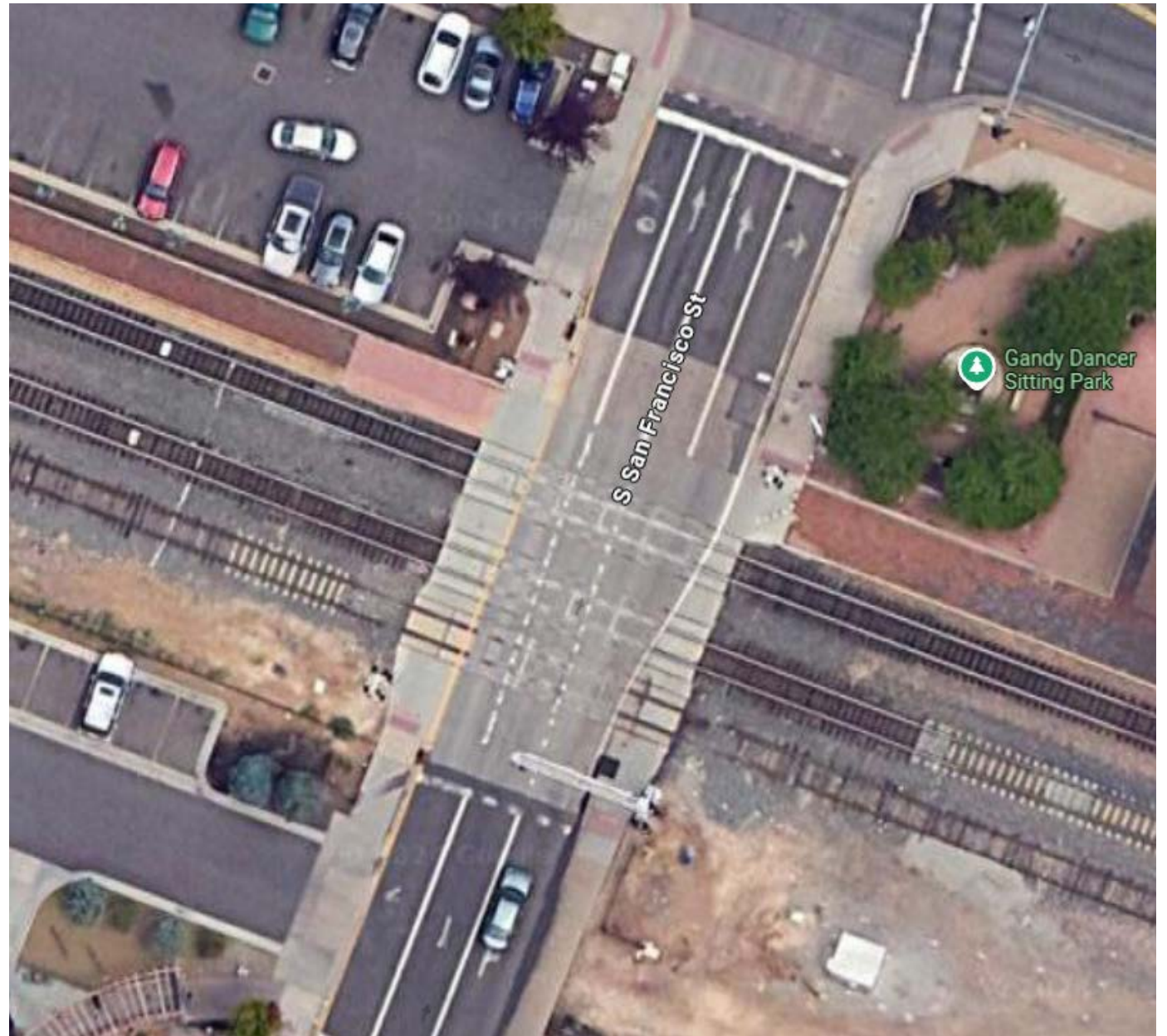


Where is the Quiet Zone?

San Francisco Street
Crossing

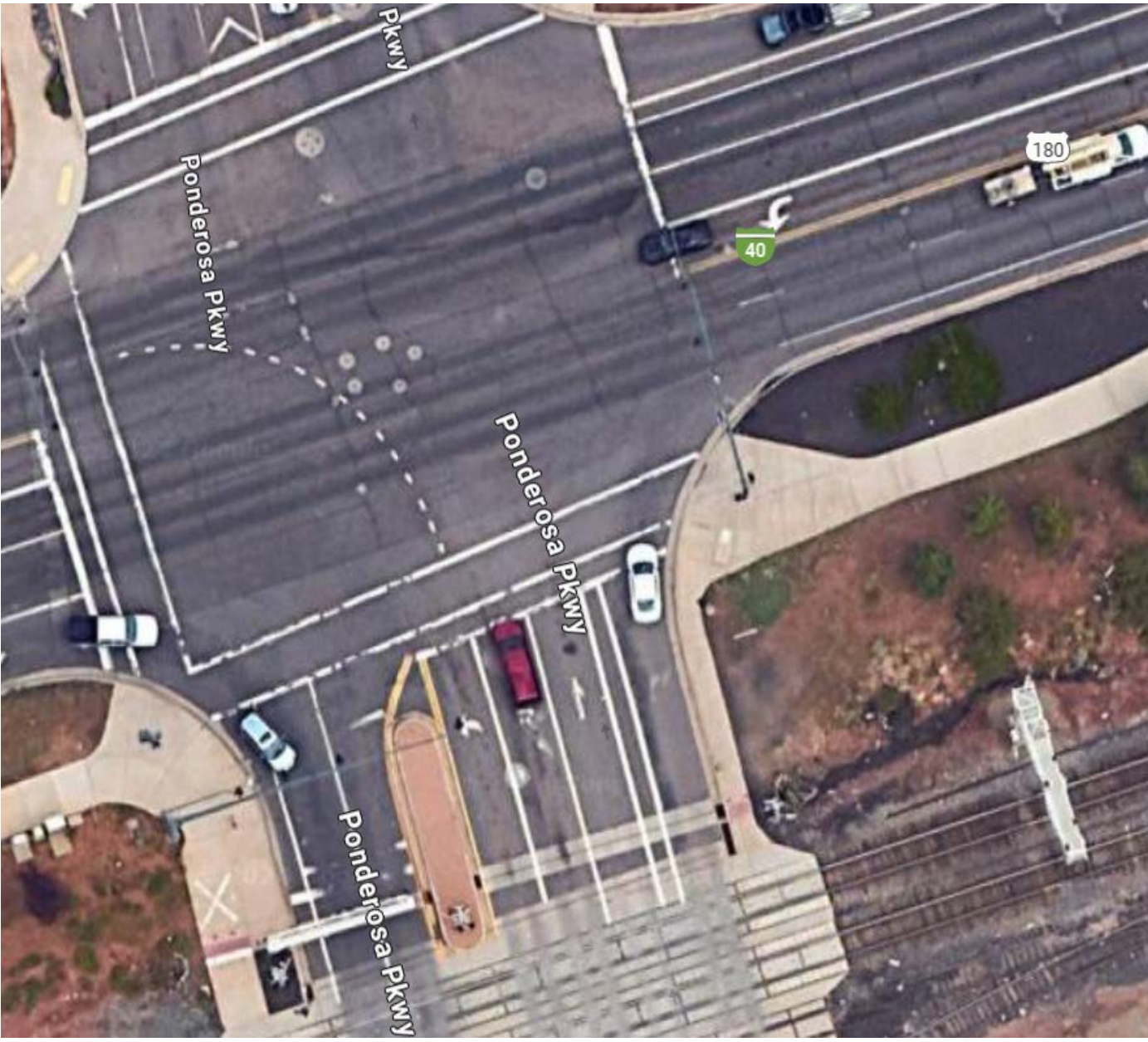
Supplemental Safety
Measure

- One Way Street



Where is the Quiet Zone?

Ponderosa Parkway Crossing



Where is the Quiet Zone?

Ponderosa Parkway
Crossing

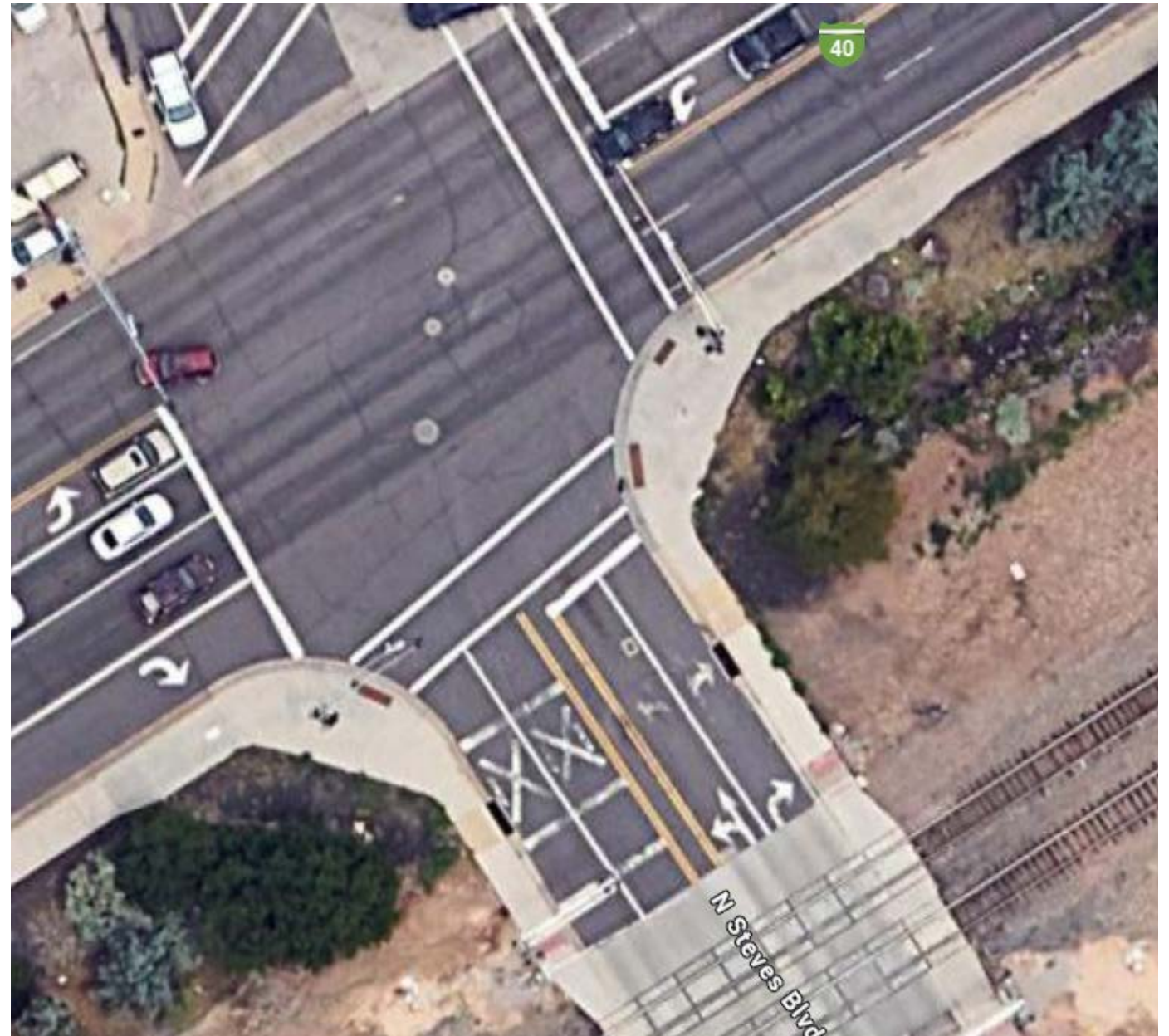


Where is the Quiet Zone?

Steves Boulevard
Crossing

Supplemental Safety
Measure

- Wayside Horns



Where is the Quiet Zone?

Steves Boulevard
Crossing

Supplemental Safety
Measure

- Wayside Horns



Where is the Quiet Zone?

Fanning Drive Crossing
Supplemental Safety
Measure

- Wayside Horns



Where is the Quiet Zone?

Fanning Drive Crossing
Supplemental Safety
Measure

- Wayside Horns



Quiet Zone Status

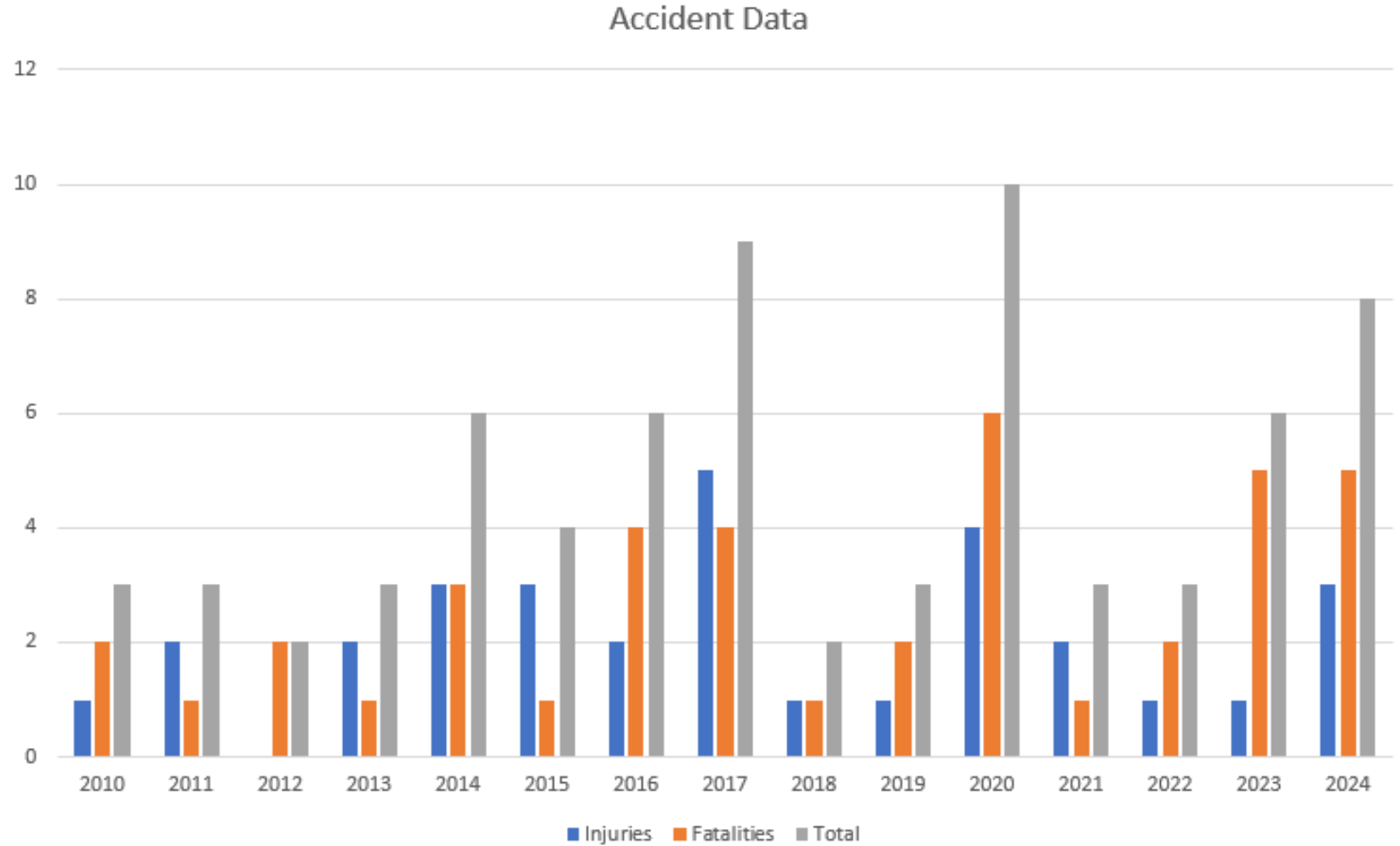
- Fall 2024 Flagstaff experienced several pedestrian v. train accidents
- FRA reached out to City
- City responded with project list
- AZ Corporation Commission urged FRA to suspend QZ
- Field Visit
- Interim safety improvements
- February 28, 2025





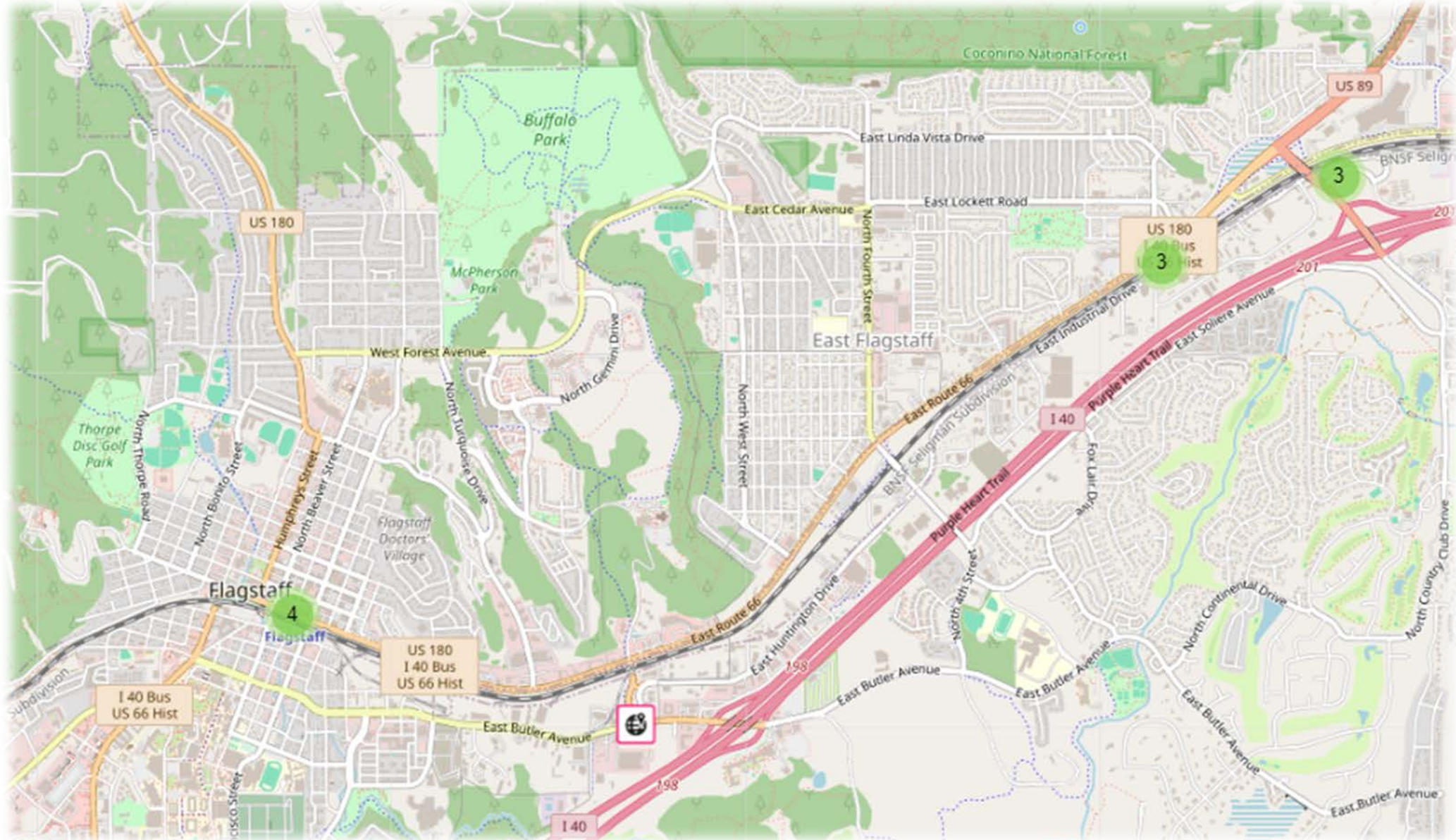
2010-2024 Accident History

Year	Injuries	Fatalities	Total
2010	1	2	3
2011	2	1	3
2012	0	2	2
2013	2	1	3
2014	3	3	6
2015	3	1	4
2016	2	4	6
2017	5	4	9
2018	1	1	2
2019	1	2	3
2020	4	6	10
2021	2	1	3
2022	1	2	3
2023	1	5	6
2024	3	5	8



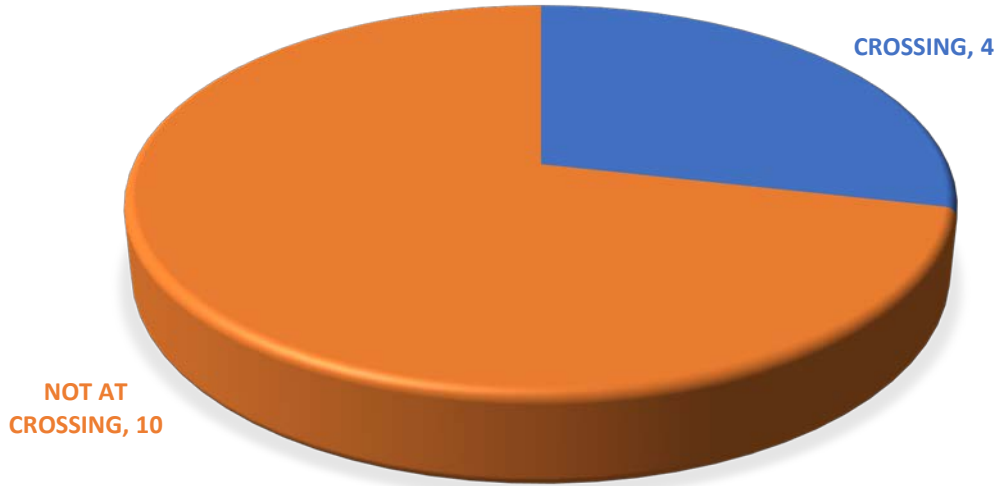


2023-2024 Pedestrian Collision Locations





2023-2024 Pedestrian Incident Location Type



ADDRESS	LOCATION
1 E ROUTE 66	NOT AT CROSSING
E INDUSTRIAL DR/N FANNING DR	NOT AT CROSSING
E PONDEROSA PKWY/E BUTLER AVE	CROSSING
E ROUTE 66/FLAGSTAFF MALL ACCESS RD	NOT AT CROSSING
N BEAVER ST/W ROUTE 66	CROSSING
N BEAVER ST/W ROUTE 66	NOT AT CROSSING
N BEAVER ST/W ROUTE 66	CROSSING
N COUNTRY CLUB DR/E NESTLE PURINA AVE	NOT AT CROSSING
N FANNING DR/E INDUSTRIAL DR	NOT AT CROSSING
N FANNING DR/E INDUSTRIAL DR	NOT AT CROSSING
N FANNING DR/E INDUSTRIAL DR	NOT AT CROSSING
N FANNING DR/E ROUTE 66	CROSSING
S RAILROAD SPRINGS/W ADIRONDACK AVE	NOT AT CROSSING
S SAN FRANCISCO ST/E ROUTE 66	NOT AT CROSSING



Enforcement Activities

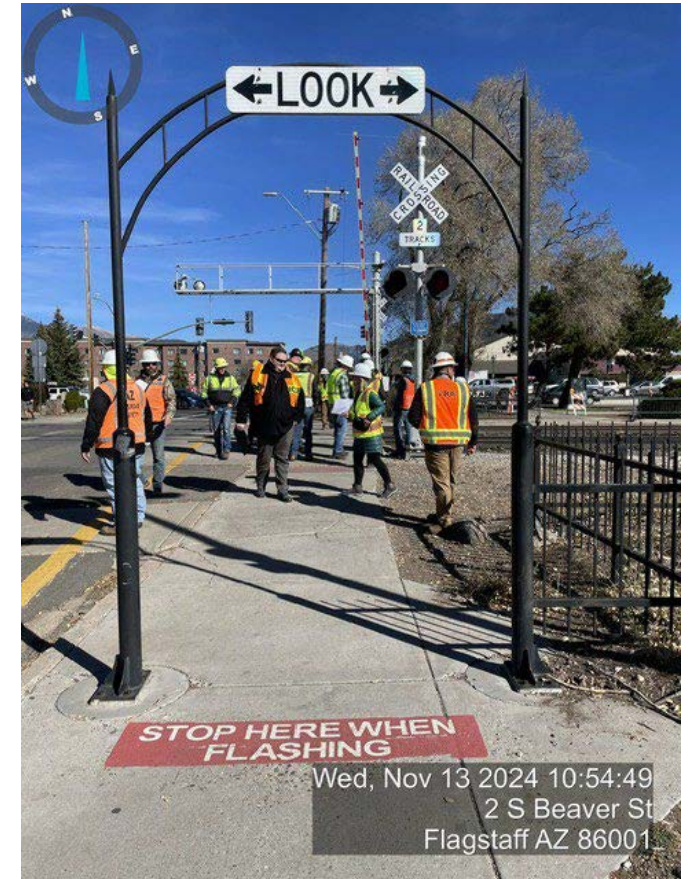
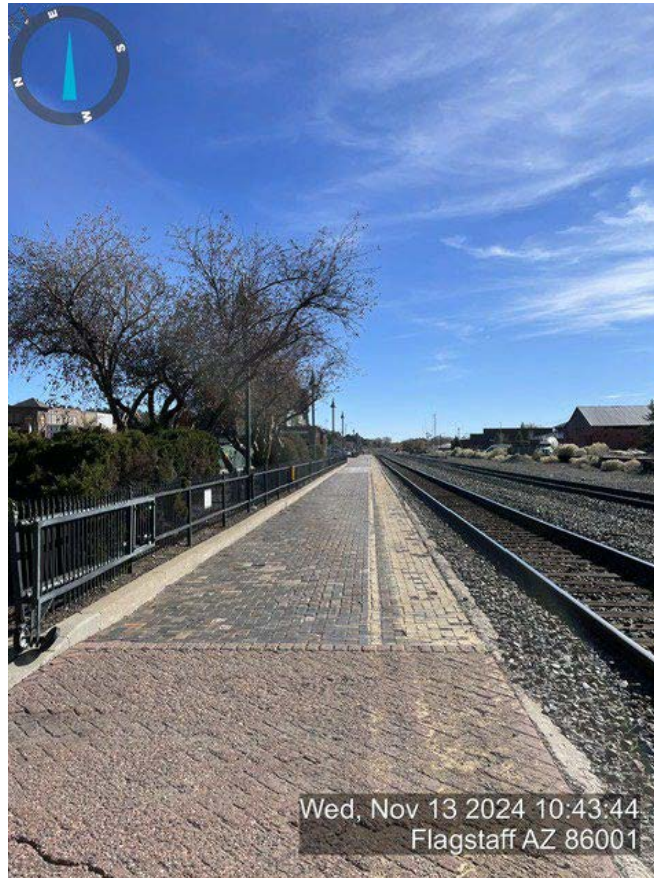




Federal Railroad Administration

- **Sara Logan** - FRA Railroad Safety Inspector-Grade Crossing, Trespass and Outreach Division

- FRA Mission
- Flagstaff Quiet Zone
 - Designation 222.39(a)(3)
 - Affirmations
- Increase in incidents
- Site Visit
- Operation Lifesaver



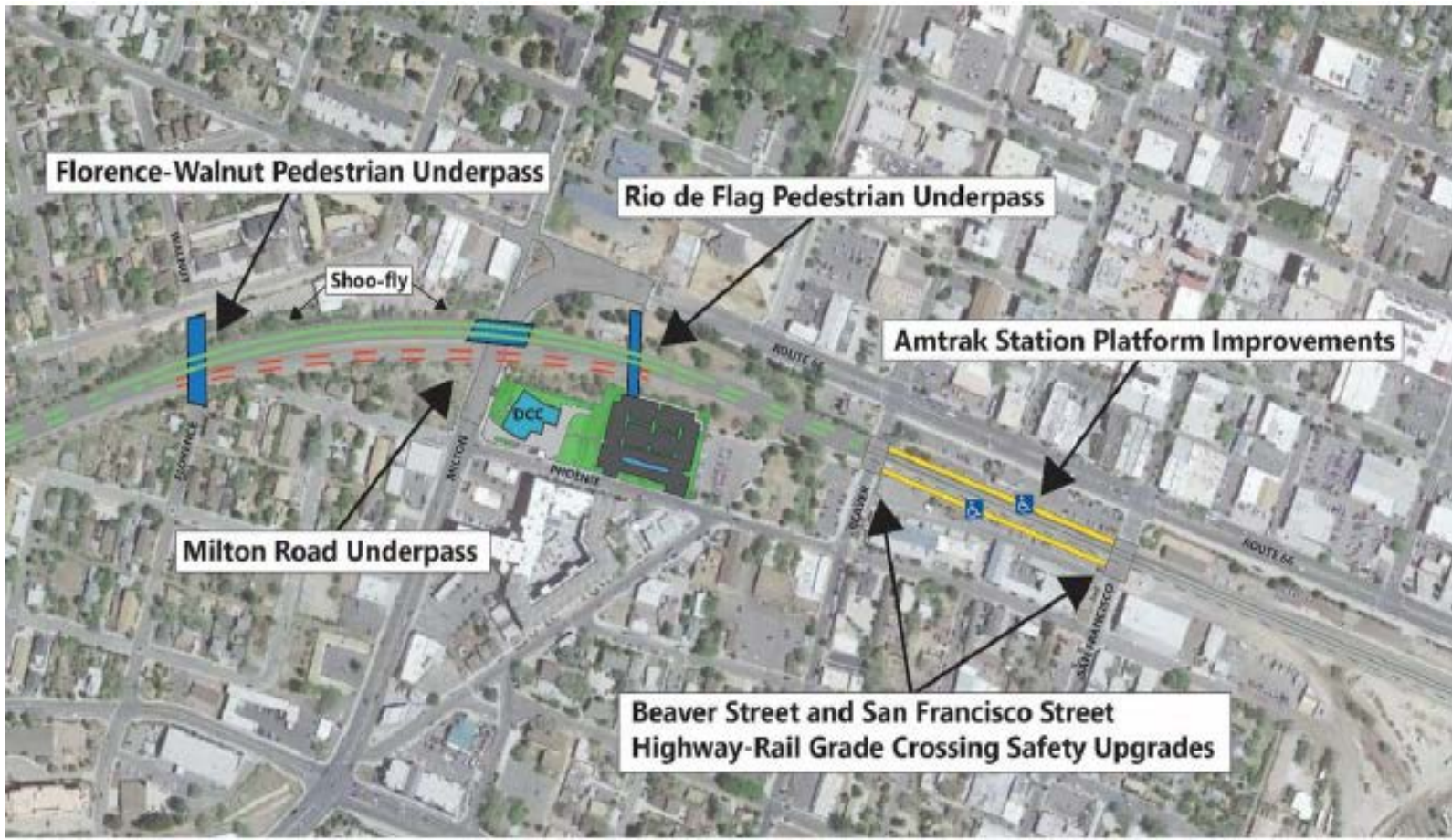


Downtown Mile Safety and Connectivity Project



Scope of work

- Two pedestrian tunnels
- Enhanced bike and pedestrian improvements with reconstruction of Milton Bridge
- Beaver and San Francisco Street at-grade crossing safety improvements
- Quad pedestrian and vehicle gates
- Fencing and Signage
- Community Rail Safety Plan
- Construction start 2026





ADOT Section 130 Projects



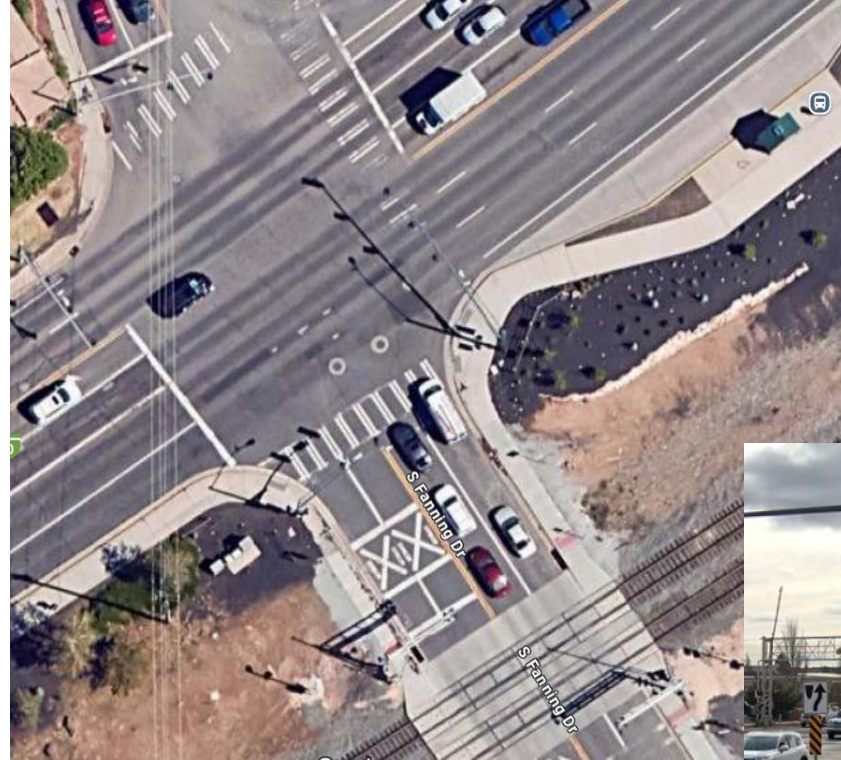
Scope of Work

Improvements at Fanning and Ponderosa Parkway crossings

- Fencing
- Signage
- Lighting

- Ponderosa Parkway includes north bound pre-signal

- Construction start 2026





Lone Tree Overpass



Scope of Work

- Grade separated crossing of the future Rio de Flag Channel and BNSF Railway Corridor
- Fencing
- Signage
- Lighting
- Construction start 2026





Interim Safety Improvements



City of Flagstaff has worked with FRA and BNSF to identify immediate safety measures that can be implemented.

New/Repaired fencing at railroad crossings

Signage – Second train and suicide hotline

Budget – Quiet Zone Modifications

- FY 25 \$308,800
- FY 26 \$300,000

**SUICIDE CRISIS
HOTLINE**

**1-844-534-HOPE(4673)
CALL 24/7**





Public Outreach & Education

Key Messages

- Operation Lifesaver Program Materials
 - See Tracks? Think Train
 - Find the Blue and White to Save a Life
 - Various safety-focused educational messages



Public Outreach & Engagement

- Community partner engagement
 - Behavioral health resource providers
 - Emergency shelter resource providers
 - Food pantries
- Collaboration with Indigenous nations and Tribal authorities
- Social media educational campaigns
- Radio ads
- Geofencing to serve educational ads to people physically near tracks
- Physical signage near tracks





Next Steps



- Complete interim improvements
- Weekly communication with FRA
- Media releases promoting safety around tracks
- Targeted enforcement activities
- Incident communication with FRA and local stakeholders
- Meet February 28 deadline
- Downtown Mile and Section 130 permanent safety project development and construction