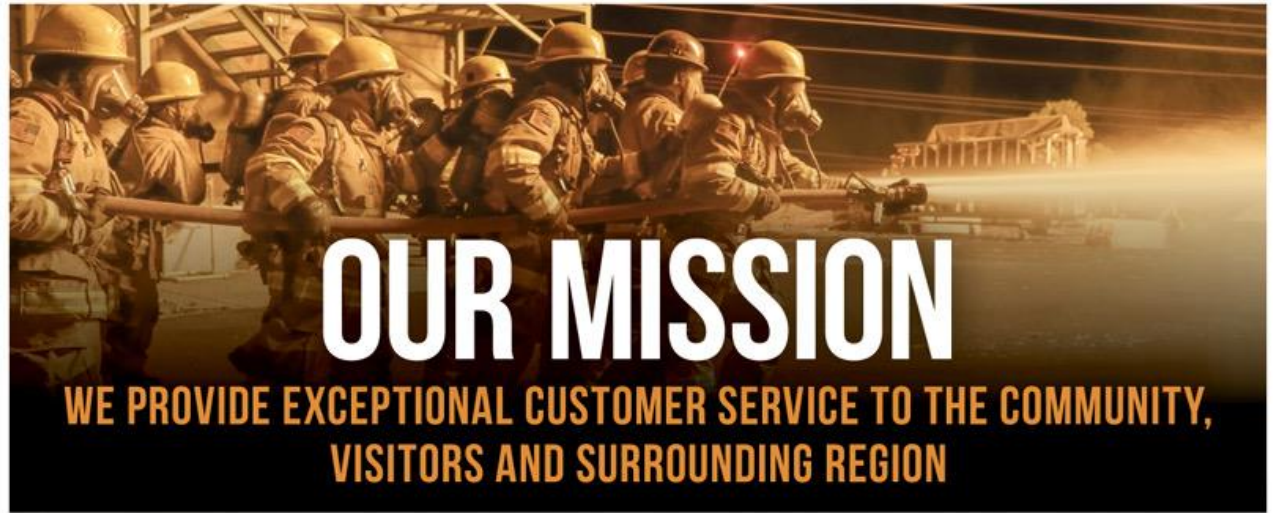


Flagstaff Fire Department

City Council Update



Mission and Values



OUR MISSION

WE PROVIDE EXCEPTIONAL CUSTOMER SERVICE TO THE COMMUNITY, VISITORS AND SURROUNDING REGION

VALUES

INTEGRITY

- ALWAYS DO THE RIGHT THING
- MAKE YOUR ACTIONS PASS THE HEADLINE TEST

HONESTY

- LIVE YOUR INTERVIEW
- BE TRUTHFUL TO YOURSELF, CO-WORKERS, AND THE COMMUNITY

RESPECT

- BE KIND
- HONOR THE PROFESSION AND THOSE WHO CAME BEFORE YOU

TRUST

- BE RELIABLE
- KNOW YOUR SKILLS
- HAVE EACH-OTHERS BACKS

Social Media and Outreach



A graphic for public outreach featuring the Flagstaff Fire Department logo at the top. Below the logo are three small images: a fire truck, firefighters in full gear, and firefighters working with equipment. At the bottom, it says "SCAN & EXPLORE" next to a QR code. Social media handles are listed: @FLAGSTAFFFIRE, @FLAGSTAFFFIREDEPARTMENT, and @GREATERFLAGSTAFFREGIONFIRE7918.

Public Outreach
373

A graphic for a recruitment information guide featuring the Flagstaff Fire Department logo at the top. Below the logo is a large image of firefighters in full gear carrying a hose. At the bottom, it says "RECRUITMENT INFORMATION GUIDE" next to a small circular logo.



Facebook followers 14,900
Instagram followers 3,485

Organization Chart

109 Total Personnel*

2 Administrative Staff

2 Prevention Staff

9 Wildland Staff

6 Command Staff

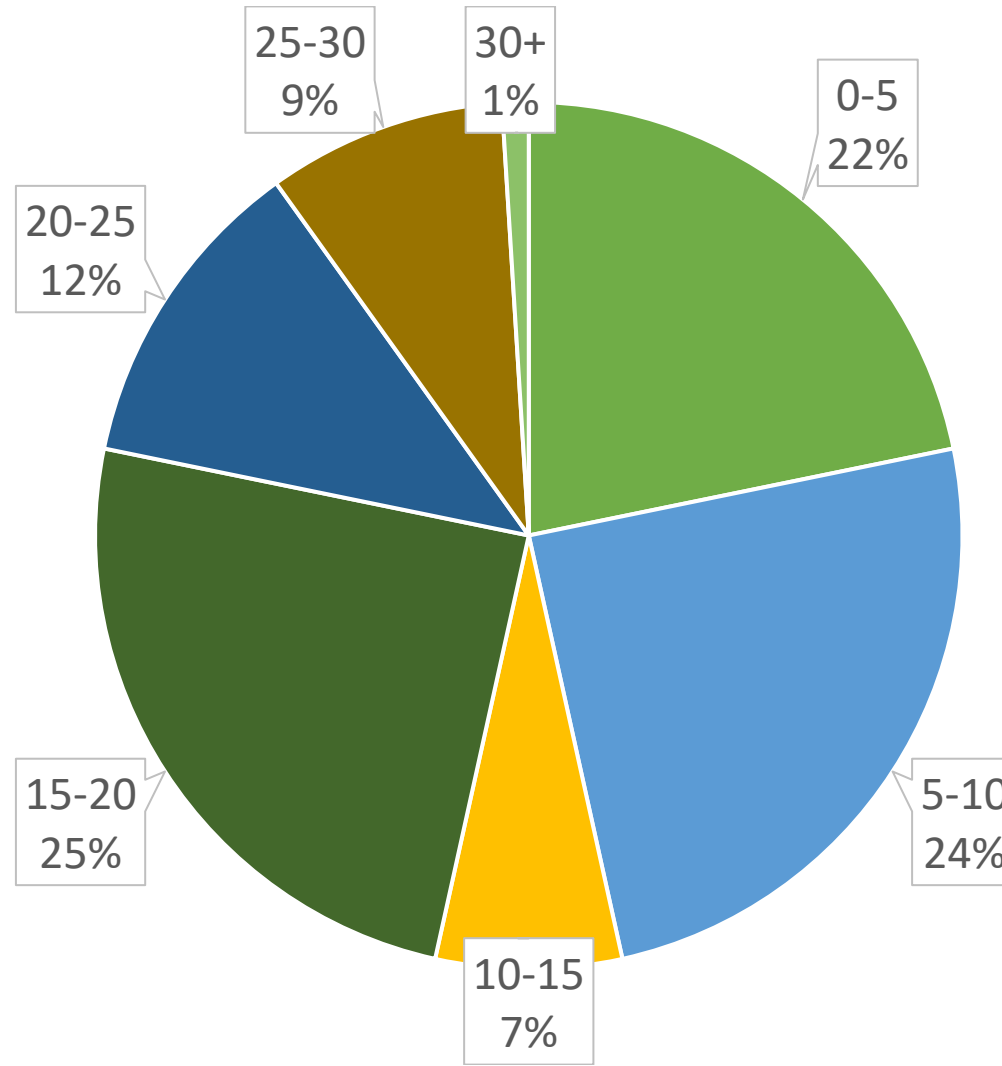
3 Shift Commanders

87 Firefighters

*Does not include Summit IGA



Years of Service



+/- 15% of the Department are scheduled to retire in the next 5 years

47% of the Department has 10 years or less of service

House of Jacks & Grey Shirts

Interview Workshops:
Interviews, Physical Agility, &
Resume Building

CCC/GFR Recruitment Events

Ride Alongs

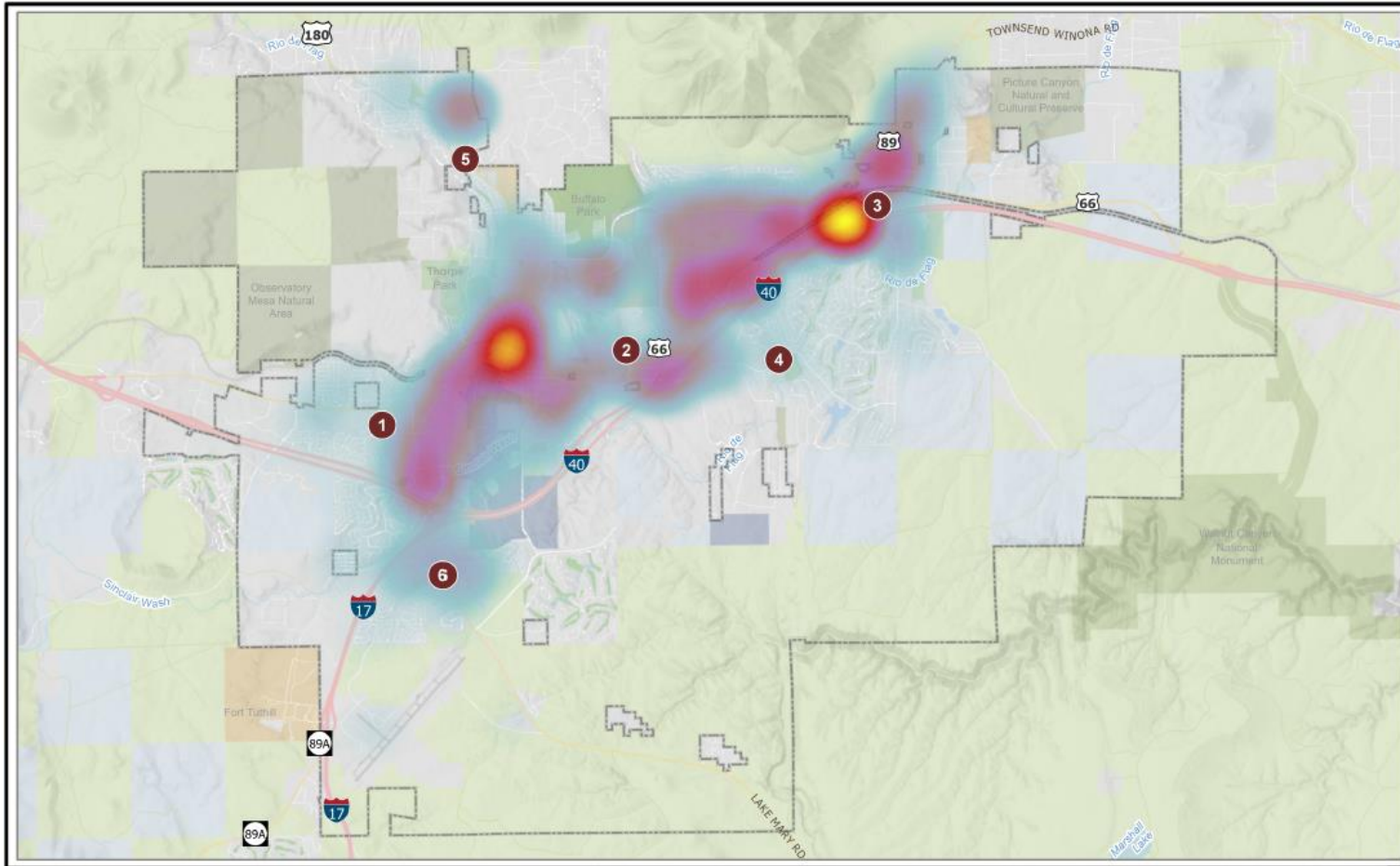
Volunteer Opportunities

Gain familiarity with the staff
and daily duties

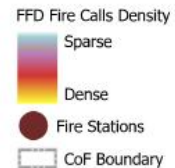




Call Volume



2024 FFD Fire Calls Heat Map



4/1/2025 12:35 PM

City of Flagstaff maps and data are updated on a regular basis from data obtained from various sources. The City of Flagstaff endeavors to provide accurate information, but accuracy is not guaranteed. You are strongly encouraged to obtain any information you need for a business or legal transaction from a surveyor, engineer, title company, or other licensed professional as appropriate. Information is provided subject to the express condition that you knowingly waive any and all claims for damages against the City of Flagstaff relating to use of this information.

2024 Call Volume

- Incidents 2024 = 18,071
 - 13.5% increase from 2023
- Runs 2024 = 19,730



New Equipment

New Quint

New Pumper

2 New Wildland Engines

Staff Vehicles

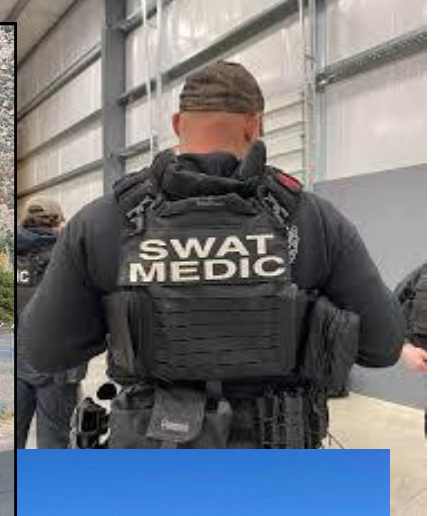
Specialized Equipment





Special Operations

TEAM FLAGSTAFF
WE MAKE THE CITY BETTER



Daily Operational Impacts

- Incidents / Reports
- Apparatus/Station Maintenance
- Training/P.T.
- Program Work
- Public Contacts





TEAM FLAGSTAFF
WE MAKE THE CITY BETTER

Training



32,000+ Training Hours in 2024



CARE



care

Community Alliance, Response & Engagement

5,000+

We've responded to **over 5,000 dispatches** since inception on March 28, 2022

86.5%

86.5% of cases have been diverted from the emergency department

98.9%

Approximately **98.9%** of cases have not necessitated a CARE Unit request for law enforcement involvement

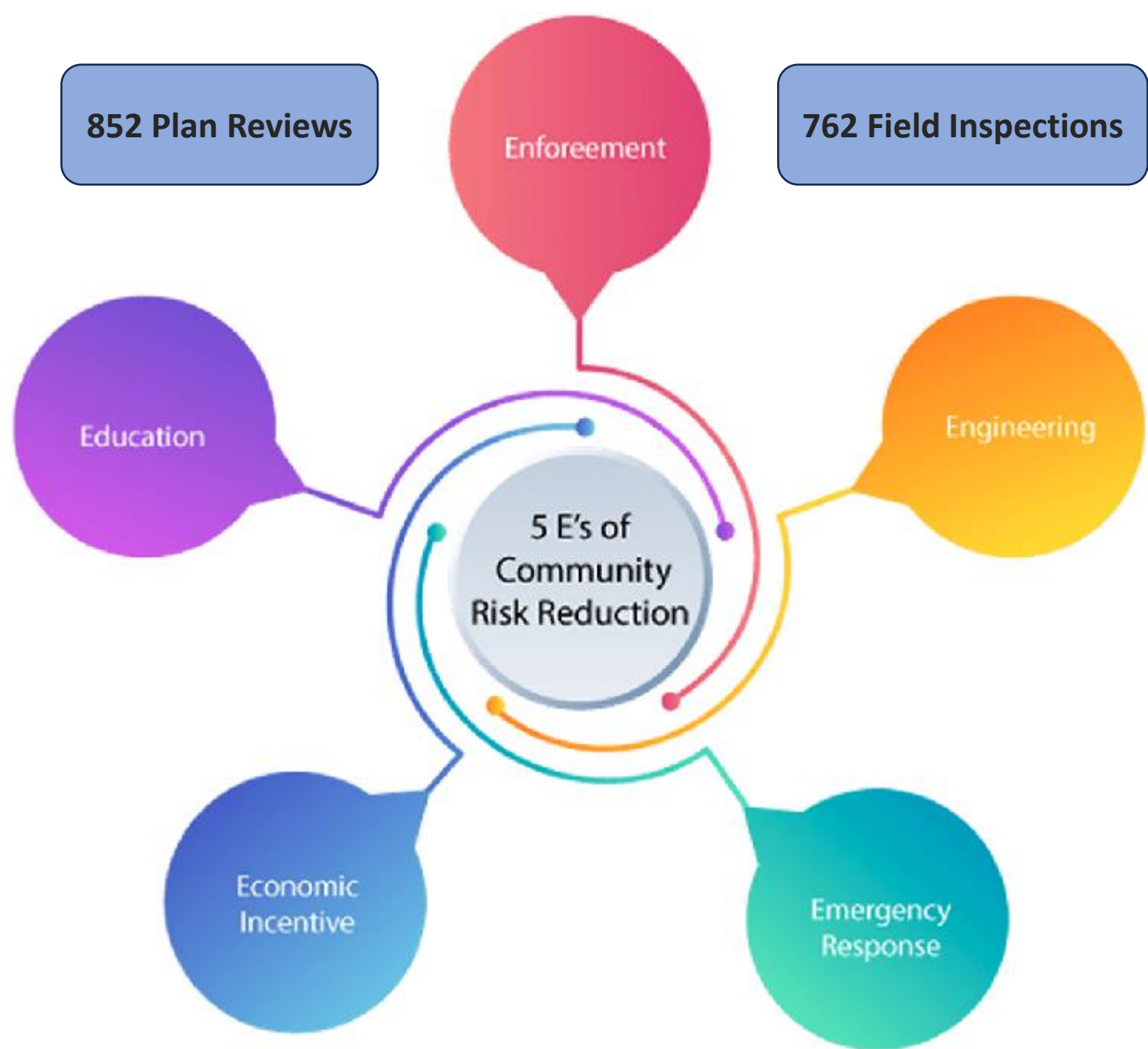
15 minutes

Response time for CARE Unit has averaged **15 minutes**



Community Risk Assessment & Plan

“Conducting a CRA is the first step toward management of risk based on local needs and circumstances.”

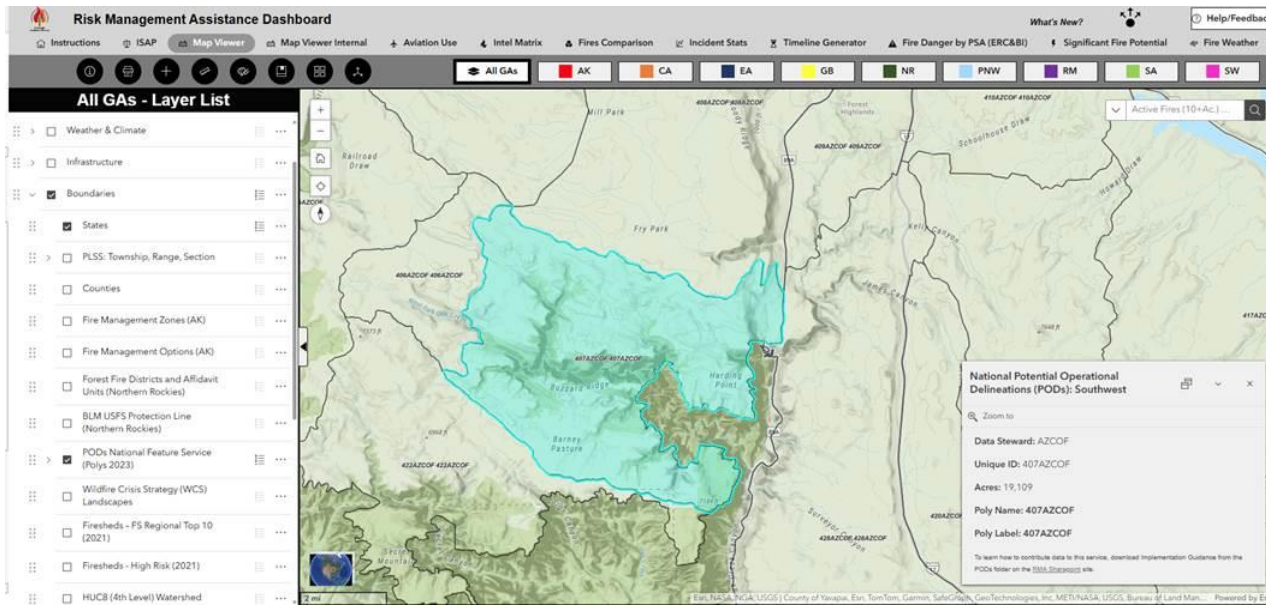




Wildfire Management



Current/Future Strategic Planning



Madronus Wildfire Defense

123 Woodside Rd, Sebastopol, CA 95472

Overview

Priority risk factors

1. Complex roof-to-wall locations
2. Single pane windows
3. Attic vents with large screens

ASSESSMENT DATE: Saturday, June 3, 2022

ADDRESS: 123 Woodside Rd, Sebastopol, CA 95472

PARCEL SIZE: 0.57ac

PARCEL DETAILS: Unincorporated Sonoma County
[County parcel report](#)

ASSESSED BY: Klaus Dalmier

WILDFIRE RISK SCORE: 71

28

Thank you!

