

Water Services

We are Water

May 13th, 2025





Water Service



Division Makeup

- Water Services is made up of six section plus admin staff
 - Field Operations
 - Plant Operations
 - Stormwater
 - Resource management
 - Engineering
 - Regulatory Compliance
 - Approximately 80 members in all





Field Operations-Patrick O'Connor

Water Distribution-16FTEs

- System integrity
 - Pipes, hydrants, PRVs, meters

Stormwater Collection-5

- Maintain channels and culverts



Wastewater Collections-9

- Maintain sanitary conditions
- Preventative maintenance
- Repair, clear blockages





Plant Operations- Vacant

Water Production-10

- All potable water
- Peak demand varies seasonally
 - 6-11MGD

SCADA-8

- Communications
- GIS mapping
- Work with all sections
- CMMS

Water Reclamation-13

- Treat wastewater
- Produce A+ reclaimed water
- Consistent flow throughout year





Stormwater-Ed Schenk



Project Management-5

- Plan, design & deliver
- NFIP rating
- Review development plans



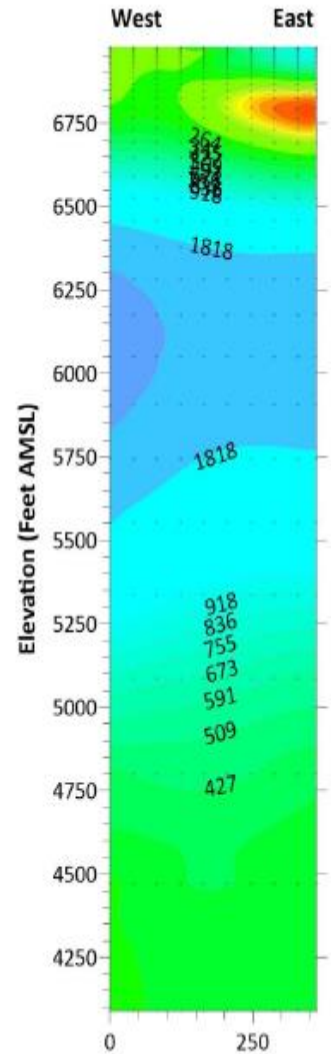


Resource Management-Erin Young



Water Resources-1.5

- 100 year designation
- Locate new well sites
- Future water supply



Conservation-3.5

- Community outreach



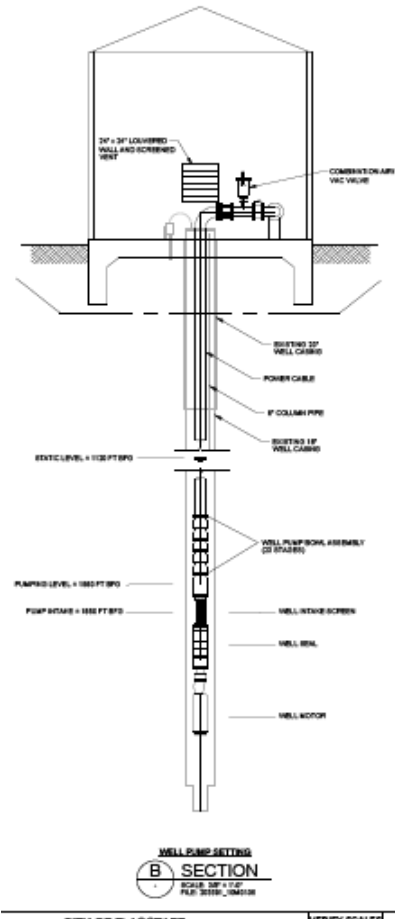


Engineering-Mac McNamara



Design, Construct & Review-4

- CIP planning
- Development review



PROJECT #	PROJECT DESCRIPTION	PAGE NUMBER
WATER (370)		
1	Beulah/University Waterline Relocation	11
2	Coconino Estates - Bundle #4	12
3	ESS Equipment Building WS	14
4	First Ave TREX Waterline Replacement	15
5	Fort Tuthill Well	17
6	Future Water Rights - Red Gap Waterline	18
7	Inner Basin Waterline	20
8	JW Powell Waterline Oversizing	21
9	Lake Mary Dam Repairs	22
10	Lake Mary Land Acquisition	23
11	Lake Mary Sedimentation Basins (Flocculations)	24
12	LM Raw Water Pipeline Rehab	25
13	McAllister-Well Design/Construction	26
14	New Well and Pumphouse	27
15	Rio Flood Control Project - Waterline	28
16	Switzer Canyon Transmission Line Phase 4	30
17	Switzer Canyon Transmission Line Phase 5	31
18	UV at Lake Mary Water Treatment Plant	32
19	Water Vault/PRV Replacement Program	33
20	Zone B Storage	34
WASTEWATER (375)		
1	Beulah/University Sewer Ext	11
2	Coconino Estates - Bundle #4	12
4	First Ave TREX Waterline Replacement	15
21	BNSF Sewer Relocations	35
22	Country Club Interceptor to WCH	37
23	Rio de Flag Sewer Relocations	39
24	Rio Solids Treatment	41
25	Wildcat New <u>Elect</u> /Fiber Upgrade	42
28	Wildcat Roof Replacement	43
RECLAIMED WATER (380)		
27	8" Bottleneck - Replacement	45
28	Advanced Treatment Concept Design	46
29	NAU Reclaim Water Meters & Vaults	47
30	BNSF Reclaimed Relocations	48
31	Buffalo Park Tank	50
32	Rio Reclaimed Pump Valve Actuators	51
STORMWATER (385)		
33	Rio De Flag FCP	52
34	Spruce Wash Resiliency - 4th at Butler - Design	54
35	Highway 180 Culvert	55
36	Santa Fe Side Lateral	56
37	Meade Lane Drainage Project	58
38	Fanning Wash Improvements	59



Regulatory Compliance-Jolene Montoya



Laboratory-5

- Certified labs at plants
- Maintain compliance with State Regs.



Pre-Treatment-3

- Inspect discharge from industrial users
- Inspect grease interceptors
- Maintain code compliance
- FOG



Questions?

