

Infinite Wonders: The Astronomy Discovery Center at Lowell Observatory

Amanda Bosh

Tuesday, 27 May 2025



Infinite Wonders: The Astronomy Discovery Center at Lowell Observatory





LOWELL

GIOVALE OPEN DECK OBSERVATORY





"In the deepest sense, the search for extraterrestrial intelligence is a search for ourselves."
-Carl Sagan



color is your shadow?



Thank you

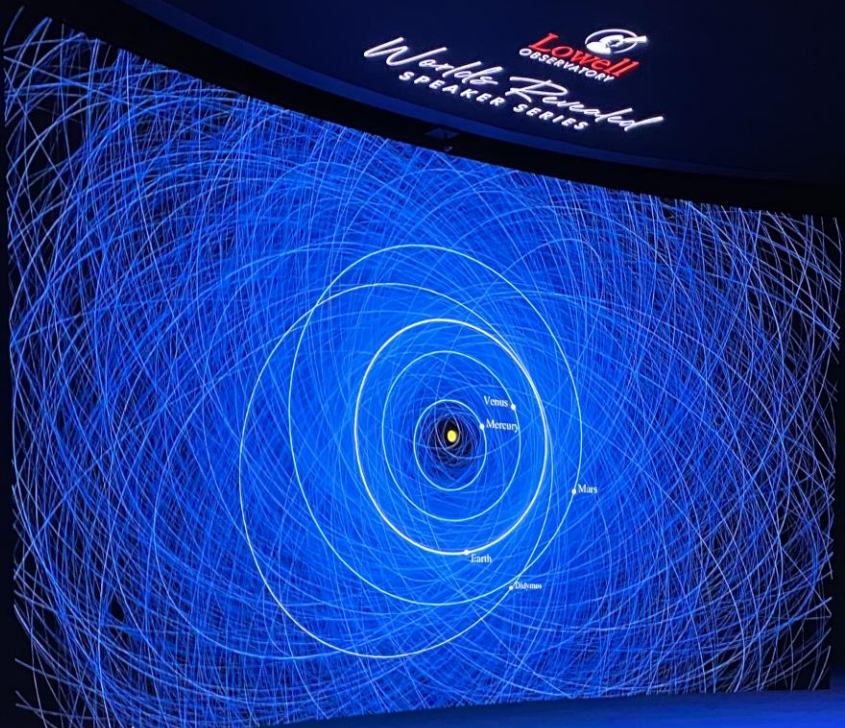


Lowell
OBSERVATORY



cts (NEOs)

Lowell
Observatory
Worlds Revealed
SPEAKER SERIES



Credit: NASA/JPL-Caltech





MERCURY
The smallest planet in our solar system, Mercury is a rocky, airless globe with a heavily cratered surface. It is the only planet in our solar system that is smaller than Earth's moon. Mercury is the closest planet to the Sun, and its orbit is the most eccentric of any planet in the solar system. It is also the only planet that does not have any moons.



Small circular inset image of a planet, likely Earth, showing a view from space.







Newsweek

READERS' CHOICE

Welcome to the Newsweek Readers' Choice Awards, where your voice recognizes the products, places, and companies that inspire loyalty. Each nominee has been selected by our editorial team, drawing on insights from industry experts and Newsweek contributors. Cast your vote once per category, every day, during our 28-day voting period. Your votes decide who earns the Readers' Choice seal of approval. Winners will be revealed within 10 days after voting ends.

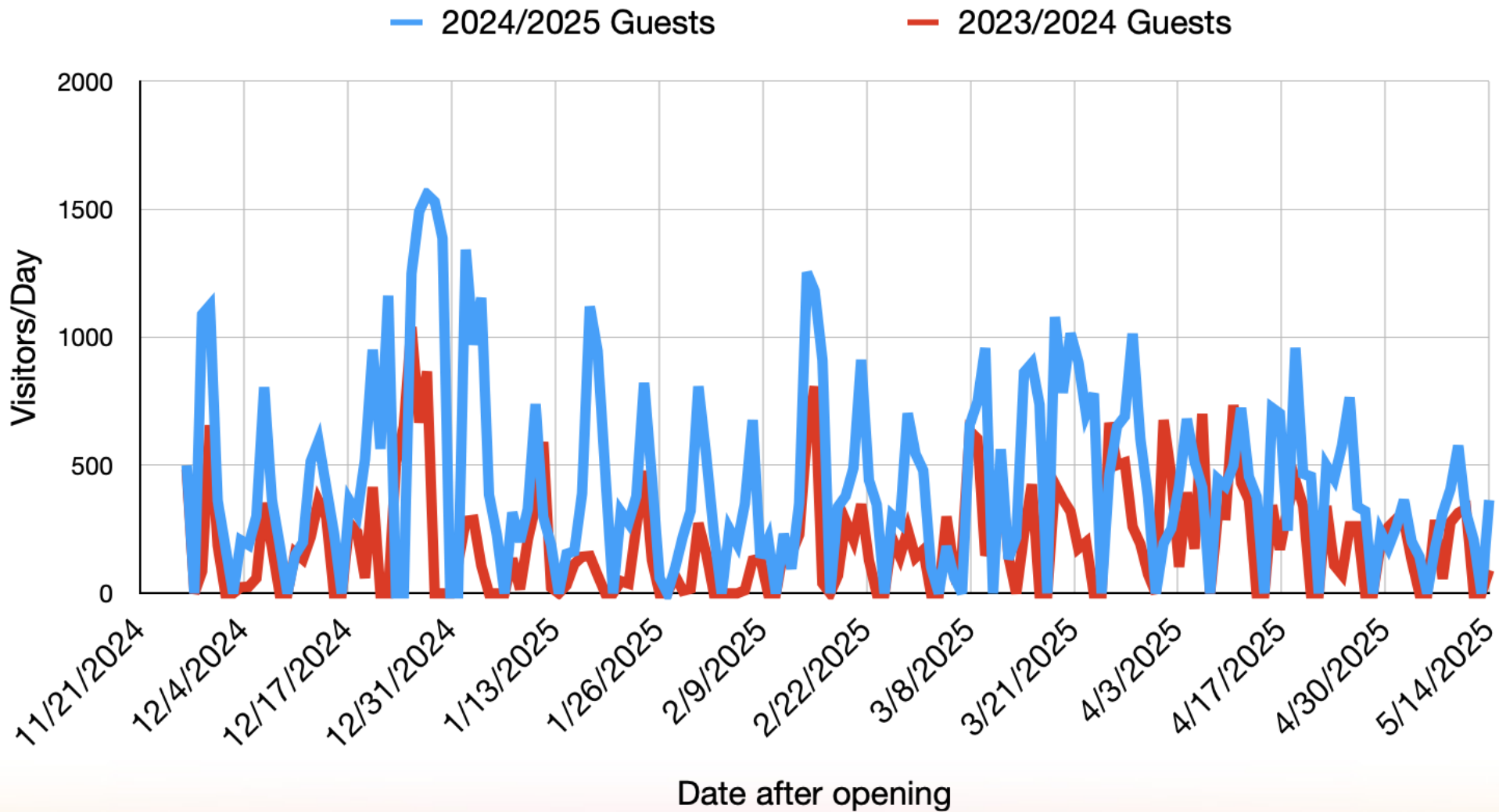
Have additional questions? [See the official Readers' Choice rules.](#)

Flagstaff Commission on Inclusive and Adaptive
Living

Agency of the Year

for the
Marley Foundation Astronomy Discovery Center







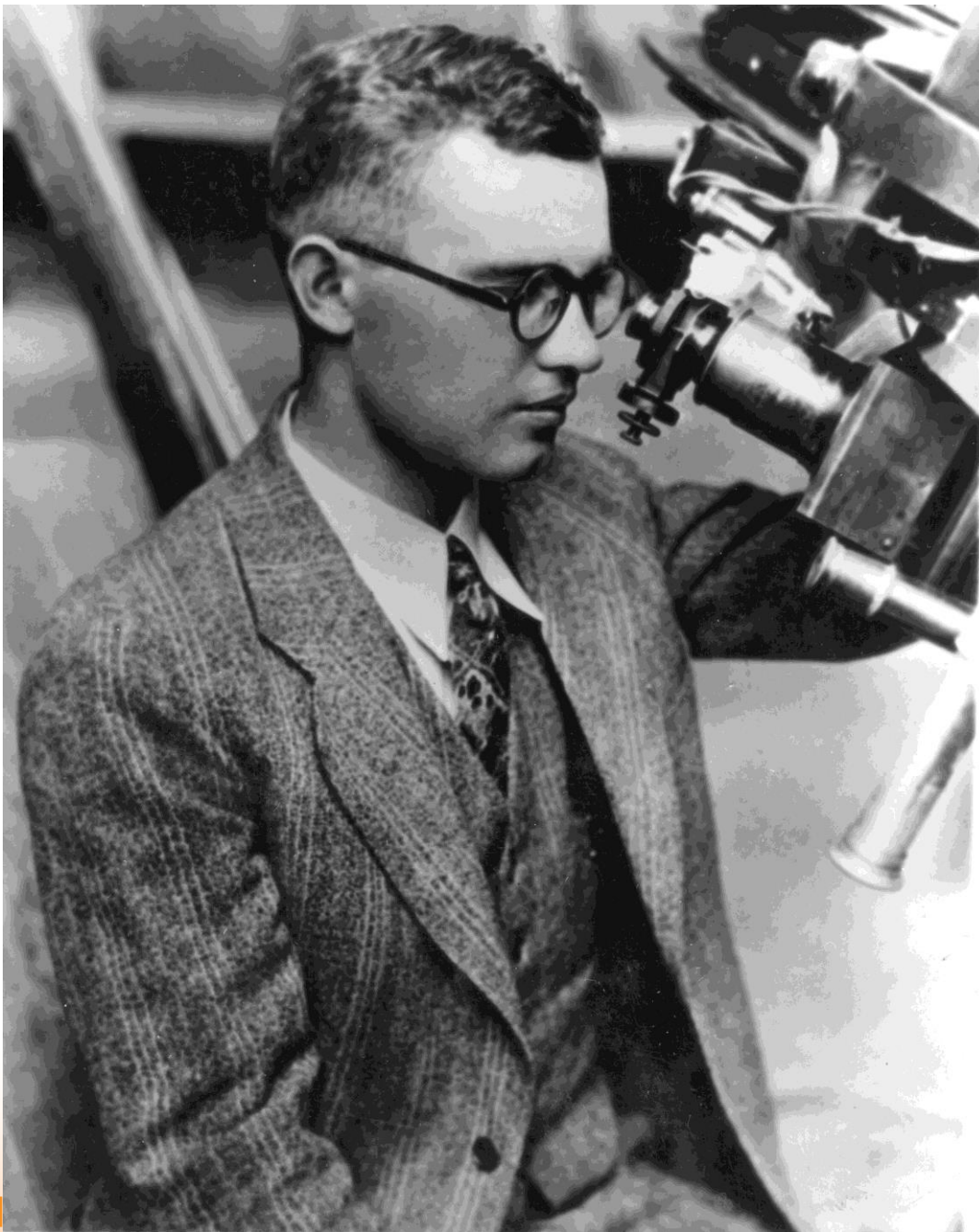
Lowell
OBSERVATORY

Worlds Revealed

The mission of Lowell Observatory is to pursue the study of astronomy, especially the study of our solar system and its evolution; to conduct pure research in astronomical phenomena; and to maintain quality public education and outreach programs to bring the results of astronomical research to the general public.

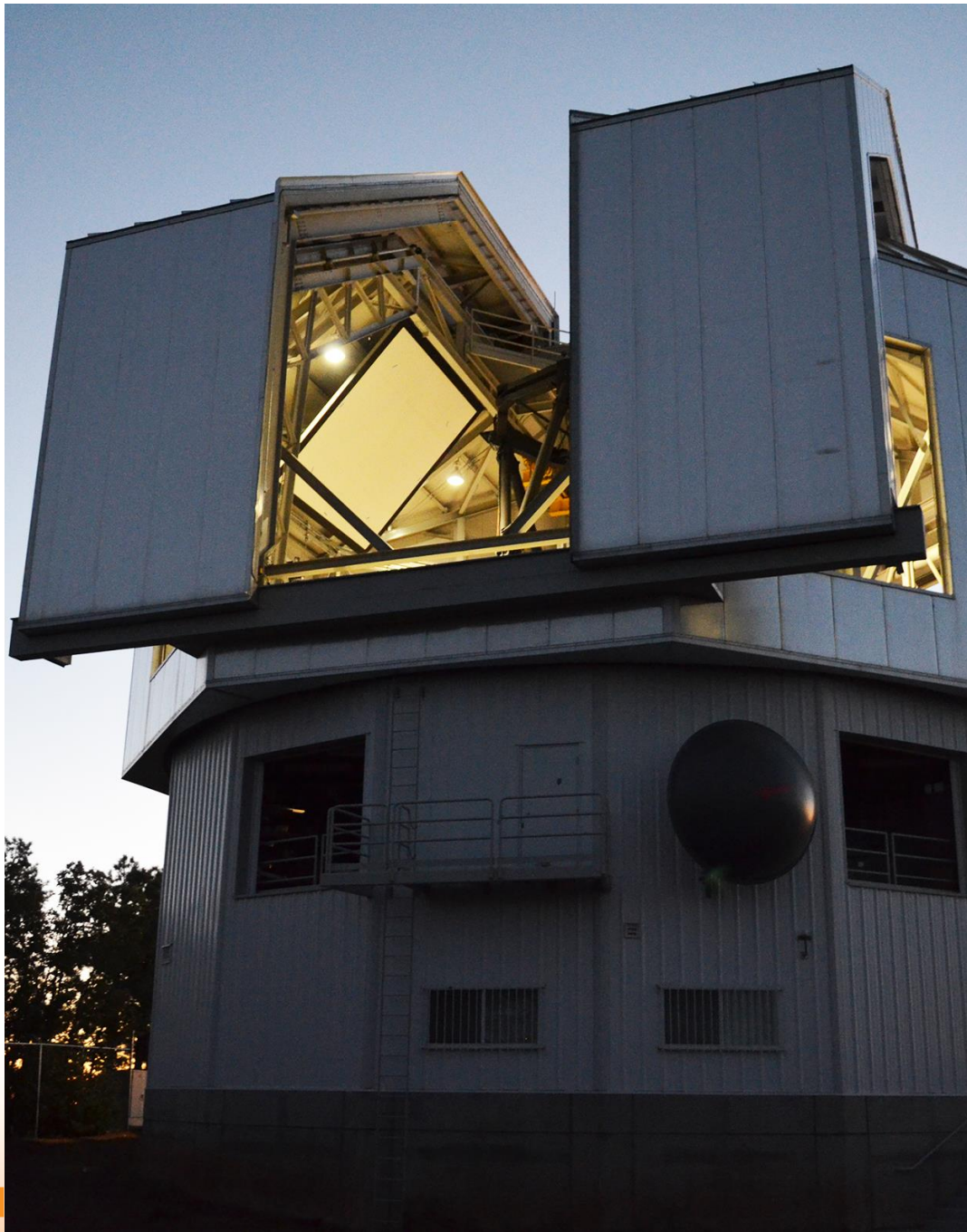


Lowell Observatory founded 1894



Pluto discovered 1930





Lowell Discovery Telescope first light 2012